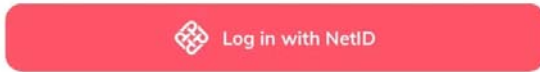


E-Purse App User Manual

- 1 Residents may login to the e-Purse App via netid for adding value to the washing machine, dryers, air-conditioner in student rooms, and settling the payment/deposits for Hall-related activity.



OR

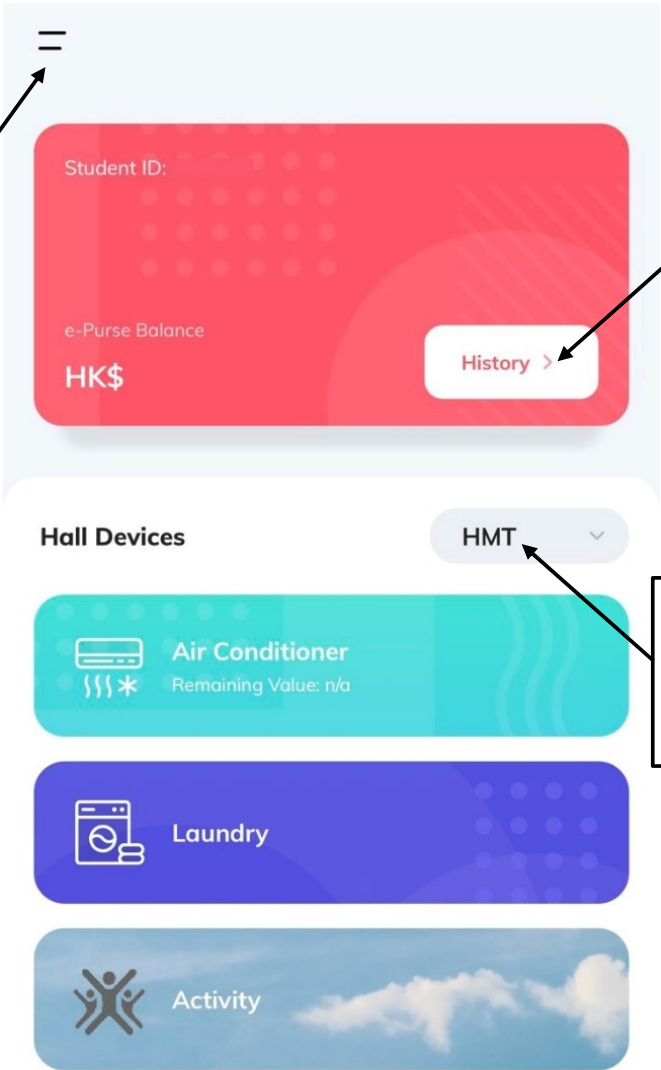
[Log in with other account](#)

"ePurse for Student Halls" is a mobile app for PolyU residents to operate the electrical appliance such as air-conditioners in student rooms and laundry machines with their ePurse. The use of this App is restricted to the aforementioned people and purposes. By logging in, I agree to the [terms and conditions](#) of this App here.

*Residents who check-in for the first time may login the e-Purse App **one day after check-in.**

2 Your e-Purse balance cannot exceed more than HK\$500.

You may select the language here. Please refer to the next screenshot.



You may check your payment history here.

Your Hall Building will be shown by default.

Refer to:

Point 3 for Air-conditioner section.

Point 4 for Laundry section.

Point 5 for Activity section.

How to select language:

Settings
Change Language English

Click here for language selection.

Settings

Change Language English

About Us >

Terms & Condition >

Privacy Policy >

Log Out

Version 1.8

Select Language

English

简体中文

繁體中文

Confirm

Cancel

Press confirm after you have selected the language.

3

Air-conditioner

Note: Value added to the air-conditioner of student rooms is non-refundable. Please avoid adding excessive amount of money to it.

The screenshot shows a mobile application interface for managing air conditioner balances. At the top, there is a teal header with the title 'Air Conditioner'. Below the header, two fields are displayed: 'My Room No.' and 'Remaining Value', both showing 'n/a'. A large, light blue button labeled 'Add Value' is positioned below these fields. At the bottom of the screen, there is a white bar with the text 'HMT Add value to another room' and a red plus sign icon. Four callout boxes with arrows point to specific elements: one points to the 'My Room No.' field, another to the 'Remaining Value' field, a third to the 'Add Value' button, and a fourth to the 'Add value to another room' button.

Your room number will be shown here.

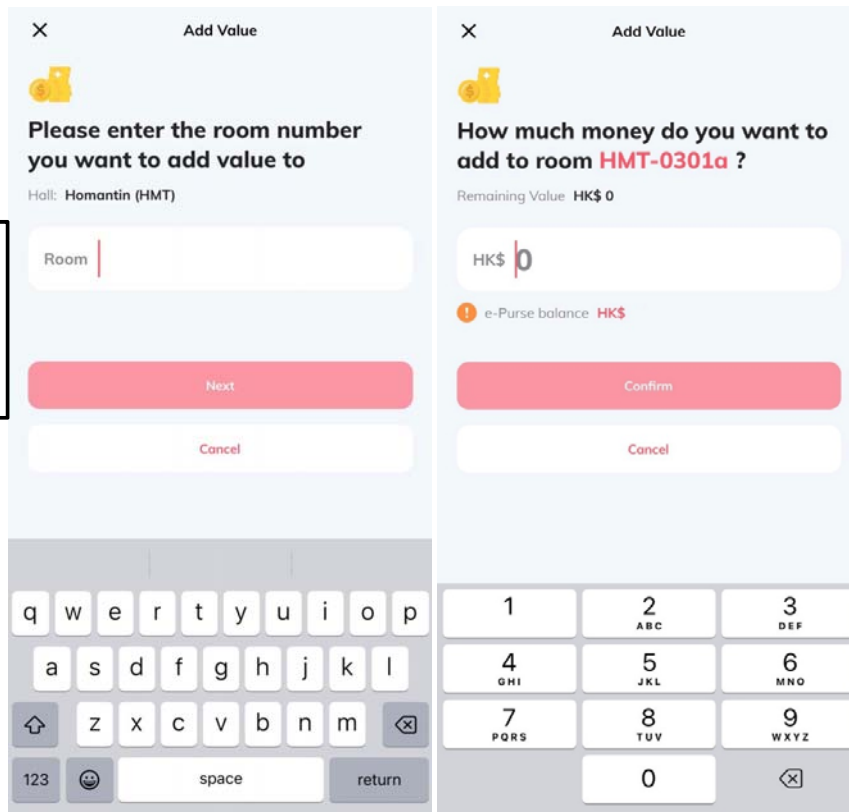
The air-conditioner balance of your room will be shown here.

You may add value to the air-condition of your own room directly by clicking here.

You may also add value to the air-conditioner of your friend's room at here.

Top up Air-conditioner value of your friend's room

Enter your friend's room number then press "Next".

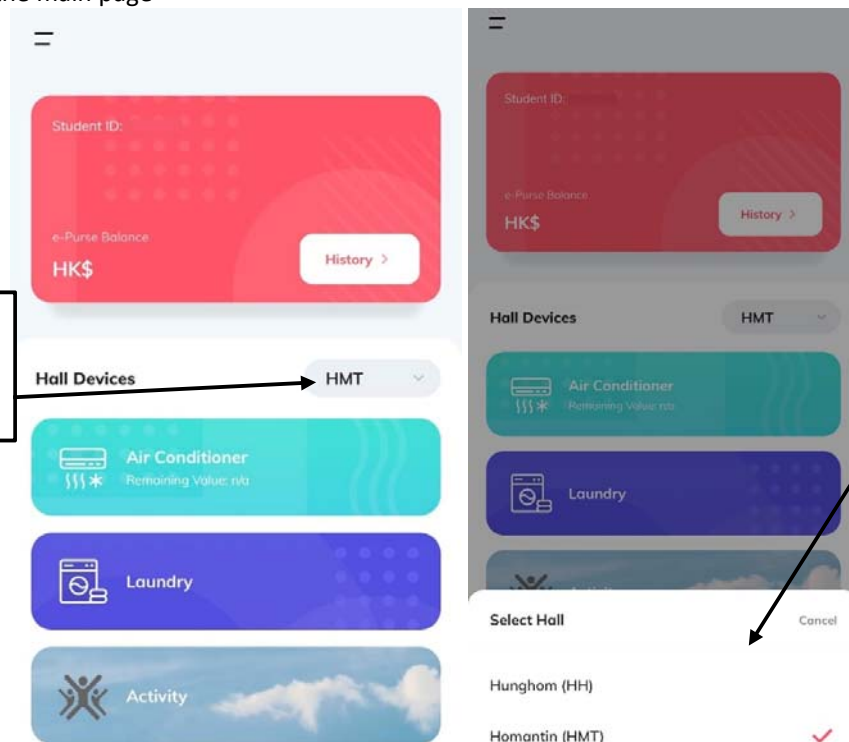


Input the top-up value then press "Confirm".

If you wish to top up the air-conditioner value for your friend in different hall building:

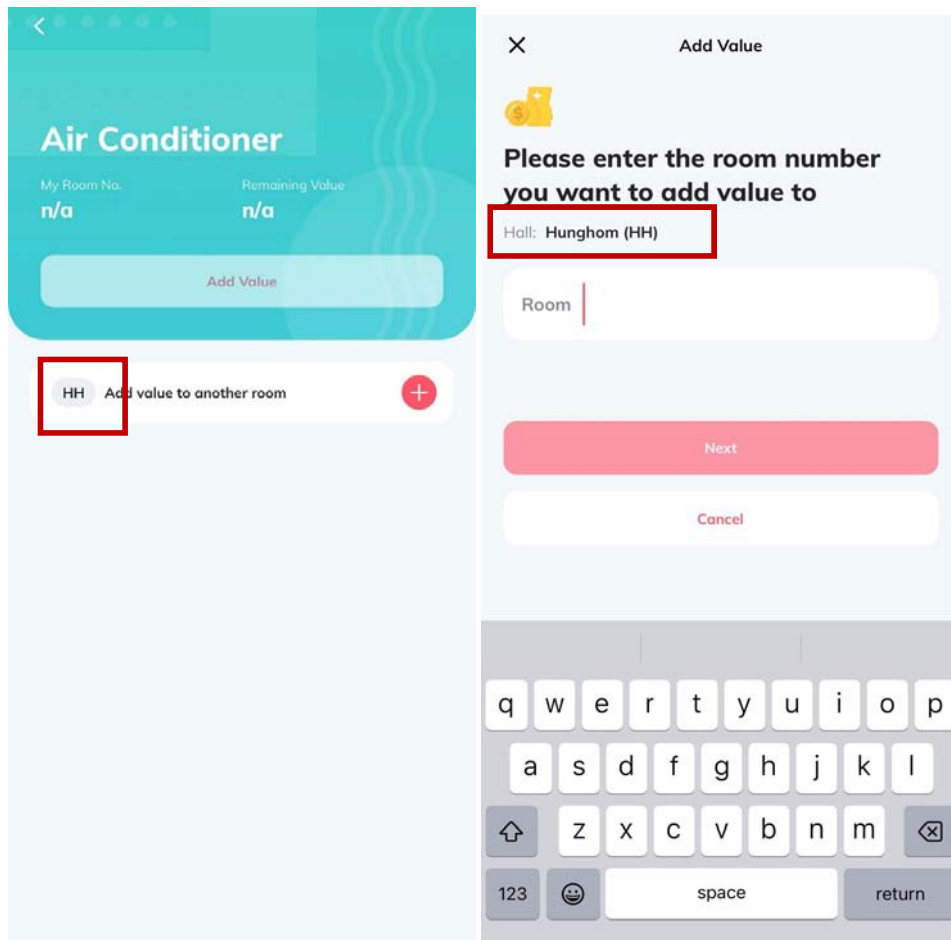
Please return to the main page

Click here for hall building selection.



Select the hall building.

After hall building selection, please **double check the hall building is correct** before entering the room number.



4

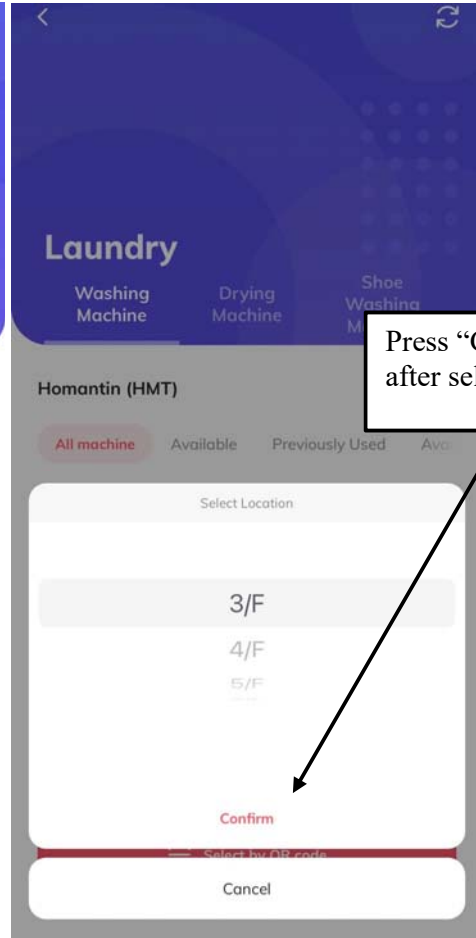
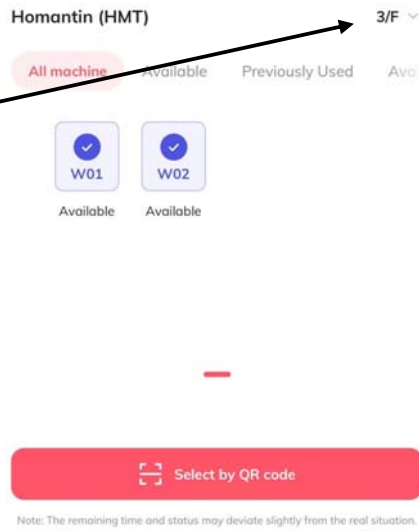
Laundry

- Washing Machine

Press here to access the washing machine section



Select Floor here.

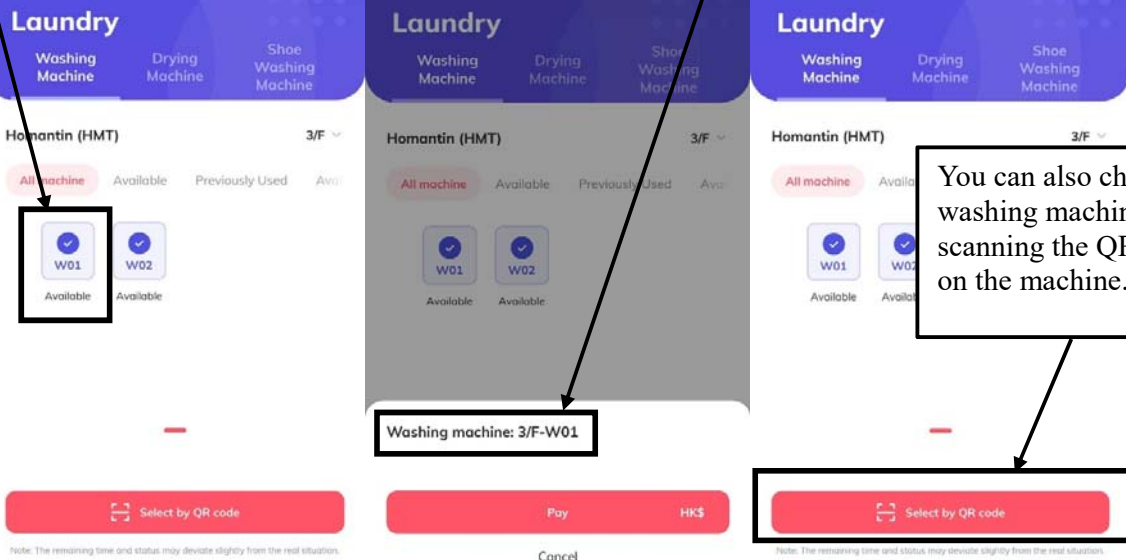


Press "Confirm" after selection.

Select the machine by clicking the icon.

Check the machine number before making the payment.

You can also choose the washing machine by scanning the QR code on the machine.

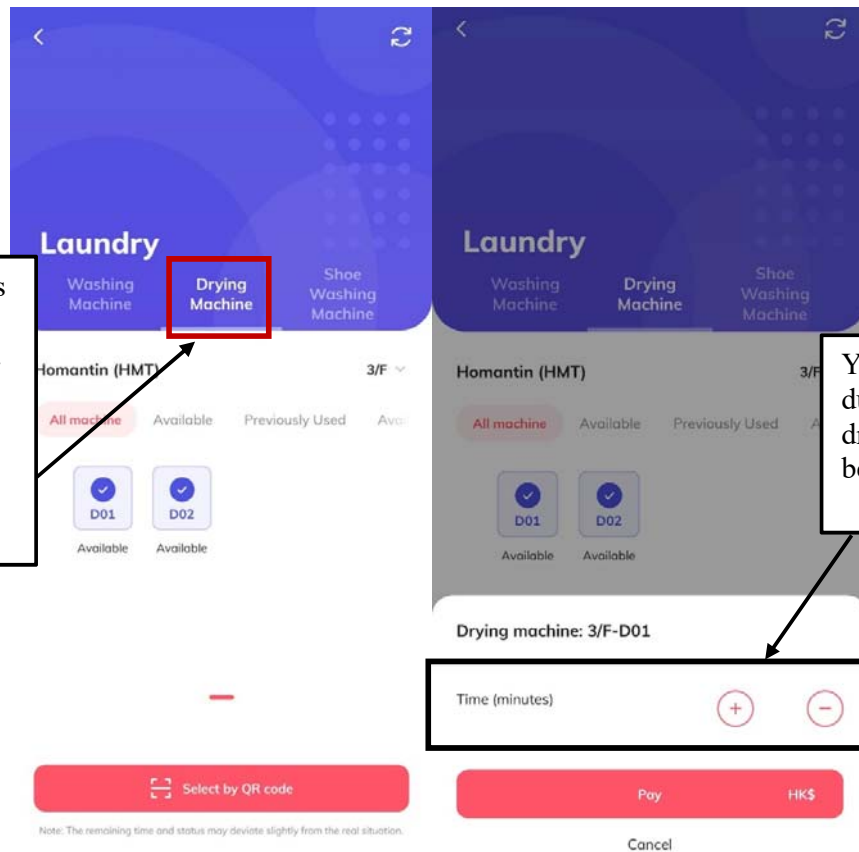


- Dryer

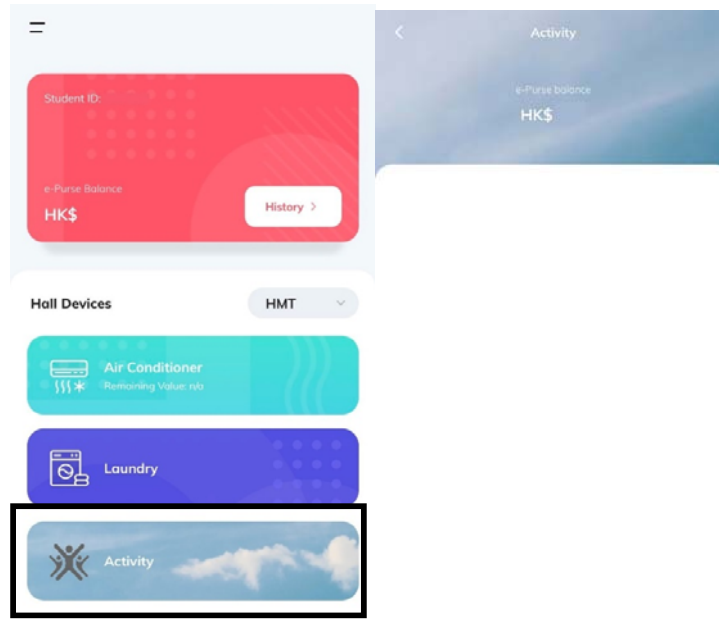
Same operation as selecting a washing machine.

Press here to access the drying machine section first.

You may select duration of drying time before paying.



5 Activity



If you have registered to join any hall-related activity which requires to settle participation fee/deposit, you will see the relevant activity option shown in the activity page for payment settlement.