

Opening Minds

PolyU nurtures future-ready global leaders through a holistic education, combining **Service-Learning, Leadership Training** and **Work-Integrated Education**. We not only deliver professional programmes with innovative pedagogies to enhance the student learning experience, but also inspire our students to become socially responsible serving leaders with international perspectives when tackling world challenges.

Faculties and Schools

- Faculty of Applied Science and Textiles
- Faculty of Business
- Faculty of Construction and Environment
- Faculty of Engineering
- Faculty of Health and Social Sciences
- Faculty of Humanities
- School of Design
- School of Hotel and Tourism Management



Students

25,800+



Taught programmes

150+



Faculty members

1,200+



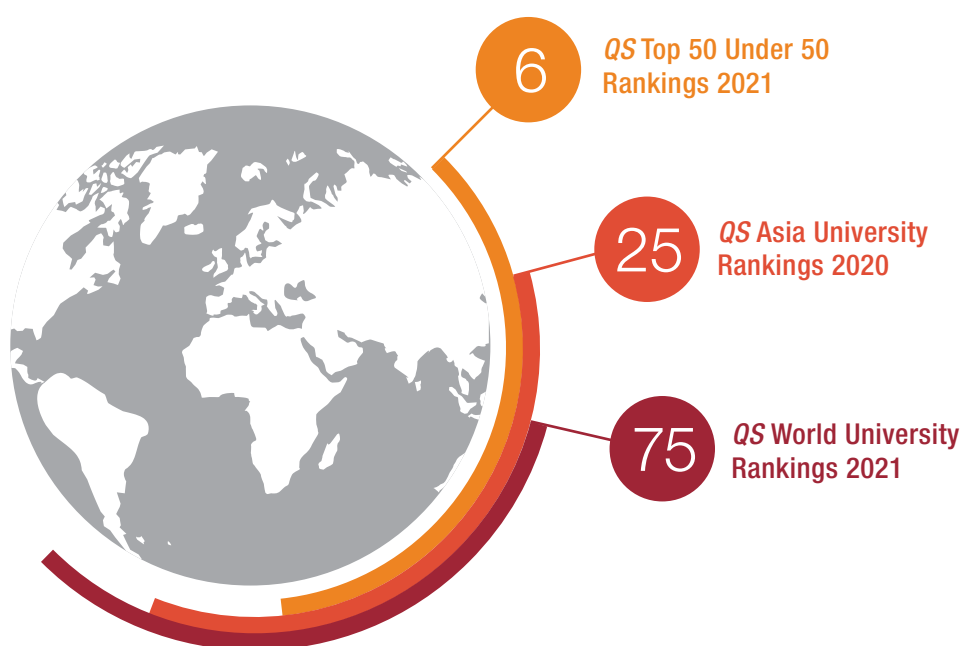
Graduates

432,000+

Shaping the Future

PolyU is a world-class university with leading research in a number of disciplines, making bold advances that break new ground. Our researchers are known for innovations that benefit industry and society. Through our interdisciplinary efforts in **biotechnology**, **sustainable development**, **new materials**, **artificial intelligence**, **robotics** and **food technology**, we are solving pressing global problems and contributing to a better world.

World rankings



QS World University Rankings by Subject 2020

- 7 Hospitality and Leisure Management
- 15 Art and Design
- 19 Civil and Structural Engineering
- 22 Architecture/ Built Environment
- 31 Nursing
- 45 Linguistics