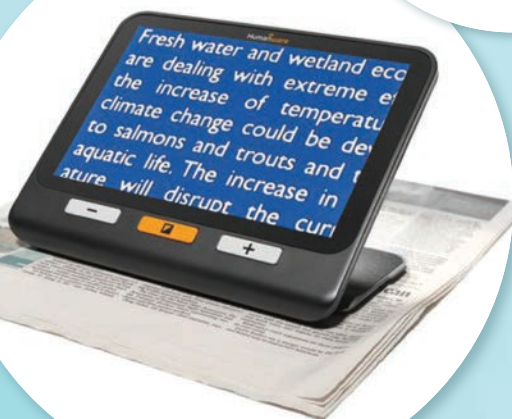


Use of new adaptive technology for the visually impaired

Apart from computer adaptive devices, some aids have artificial intelligence which can recognize facial features, read text and describe background and/or image.



What to bring?

- 1 Current and old eyeglasses
- 2 Current magnifiers, telescopes and other low vision aids
- 3 Vision and health report(s)
- 4 Current medication and eye drops
- 5 Samples of reading material such as books or bills

MAKE AN APPOINTMENT



Enquiry : <https://polyu.hk/FkIBM>

Tel : (852) 2766 5225

Address: A034, The Optometry Clinic,
The Hong Kong Polytechnic University

Website : <https://www.polyu.edu.hk/so/>

Scan QR Code
for Chinese Version



Vision Rehabilitation Service

Vision Rehabilitation Service

The Optometry Clinic of The Hong Kong Polytechnic University aims to help the partially sighted to:



Understand visual limitation through comprehensive low vision evaluation



Have prescription of appropriate low vision devices



Maximize remaining vision



Enhance remaining vision to cope with daily tasks such as reading, watching TV, and studying



Improve functional performances and quality of life



What are common eye diseases in visually impaired?

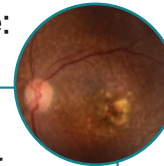
Degeneration comes with age. Visual impairment becomes more common due to ageing eye diseases and degeneration. More people will have visual impairment. Visual impairment refers to people who cannot improve their vision by surgery, medication or optical correction.

The common causes of visual impairment among adult and children include:

ADULT



- Age-related macular degeneration
- Myopic degeneration
- Stroke
- Glaucoma
- Diabetic retinopathy
- Retinitis pigmentosa



CHILDREN



- Juvenile macular dystrophy
- Aniridia
- Congenital cataract

What are Low Vision Aids?



Eyeglasses and near aids



Magnifiers



Filters



Telescopes and distance aids

These devices can help people with visual impairment to maximize their functional vision and improve their quality of life.