



THE HONG KONG
POLYTECHNIC UNIVERSITY
香港理工大學



眼科視光學院
SCHOOL OF OPTOMETRY

In-focus

A quarterly newsletter of the School of Optometry

Vol.7 | Issue 1 | Spring 2009

PolyU-Optometry A Caring Profession



OPTOMETRY – A CARING PROFESSION

COMMUNITY OUTREACH

PolyU is well known for its accessibility to and partnership with the local community. Our School is one of the most active academic units in engaging the local community. Our Optometry curriculum requires each student to participate in at least three vision screenings. One of the aims of such requirement is to cultivate the student's professional responsibility in the community.

The School has three satellite clinics: The Optometry Service at Our Lady of Maryknoll Hospital (OLMH), The Integrative Community Health Centre (ICHC) at Lai King, and The Sik Sik Yuen – PolyU Optometry Centre (SSYP) at Wong Tai Sin. The OLMH clinic is our first satellite clinic and it introduced our first diabetic retinopathy screening service. The ICHC clinic not only runs a diabetic retinopathy screening service to the community, but also runs another community service project called the Vision Hong Kong. This project, through cooperation and collaboration with the optical industry, aims to provide vision care to the poor and the needy at no charge. The SSYP clinic provides students with the opportunity to serve children, low-income groups and the elderly.

Apart from local outreach, the School also supports community service in the Chinese Mainland. Over the past decade, our students and staff have conducted numerous missions in the mountainous regions of Guangxi and Guangdong in collaboration with the China Care Fund and the Rotary Club of Kowloon North. They have screened the vision and examined the eyes of several thousand children and improved the lives of hundreds of children through dispensing hundreds of pairs of spectacles.

I am confident to say that by the time they graduate, our students will have developed a culture to help others. Apart from the clinical experience gained, community service gives our students an opportunity to reflect on their own lives and a sense of volunteerism. The university recognizes the efforts of our students through the annual PolyU Community Service Learning Awards.

Optometrists are lucky to be members of the Health Professions with secure jobs and good prospects, even in these gloomy economic times. Using our professional knowledge to help the less fortunate makes us a better and more noble profession.

Dr. Andrew Lam

Associate Professor and Associate Head
School of Optometry



WHAT'S HAPPENING OUT THERE?

Visit by Dr. June Crown CBE, Special Advisor to World Health Organization (WHO)

Dr. June Crown CBE, a special advisor on public health to the WHO, recently visited the School and held a forum with academic staff, clinicians as well as representatives from the professional associations. Dr. Crown is best



known for the Crown Reports (1989, 1999) in the UK which promoted

prescribing of medicines by health professionals other than medical doctors and dentists. The reports were adopted by the UK government and as a result, nurses, pharmacists and optometrists, who have appropriate training and experience, have been granted prescribing rights.



Visit by Prof. Timothy Tong, New PolyU President

With effect from 1 January 2009, The Hong Kong Polytechnic University enters a new era under the leadership of Prof. Timothy Tong. Prof. Tong was Dean of School of Engineering and Applied Science at The George Washington University in the United States. On 6 February 2009, he had meetings with the Faculty of Health and Social Sciences and its departments and schools. He toured the Optometry Clinic and was briefed about the activities of the School.



WHAT'S HAPPENING OUT THERE?

Opening of a New Community Optometry Centre

The School and religious charity Sik Sik Yuen, with the support of Wong Tai Sin District Healthy & Safe City, jointly established the "Sik Sik Yuen-PolyU Optometry Centre" to provide comprehensive eye care services particularly for the elderly and the needy in the Wong Tai Sin District. The grand opening of the centre was officiated by Dr. the Hon. York Chow, Secretary for Food and Health of the Hong Kong SAR Government, Mr. Lee Yiu-fai, Chairman of Sik Sik Yuen and Prof. Timothy Tong, President of PolyU, on 14 February 2009. This centre aims to increase public awareness of the importance of regular eye checks in order to eliminate preventable vision loss.



WHAT'S HAPPENING OUT THERE?

Annual School Retreat

The School held its annual retreat on 6 and 7 January 2009. This year, the various teams of the School conducted their own SWOT analyses and also explored ways to enhance smooth interaction between teams to improve efficiency. As a result, several new practices have been put in place in the School and new training programmes proposed.

**The 6th Joint Eye Research Day**

The 6th Joint Eye Research Day, jointly organized by the Zhongshan Ophthalmic Center (ZOC), Sun Yat-sen University and our School, was held at ZOC on 10 January 2009. This occasion provided a good platform for the scholars and researchers from both institutions to share and discuss their latest research findings. The event started with opening remarks by Prof. Yu Min-bin (ZOC) and Prof. Maurice Yap, followed by ten talks. The talks covered Alzheimer's disease, myopia development, scleral remodeling, glaucoma, low vision and orthokeratology.

**Donations to the School**

Prof. Victor Woo has donated HK\$126,000 to the School to support research.

Rotary Club of Kowloon North has donated HK\$15,445 to the School to support community projects.

WHAT'S HAPPENING OUT THERE?

Vision Screening Projects of the School Community Service to Guangxi 2008



Vision aid to Tengxian

In December 2008, Dr. Patrick Ting led 12 Year 3 Optometry students together with 12 secondary school students from the Sacred Heart Canossian College, Hong Kong, to Tengxian where they conducted vision screening in kindergartens, primary schools and secondary schools. In total, the team screened around 1500 pupils and prescribed 153 spectacles which were kindly donated by the China Care Fund. Two primary school children were found to have corneal scarring due to trauma and one primary school child was referred for medical attention as a glaucoma suspect.



Vision aid to Mashan

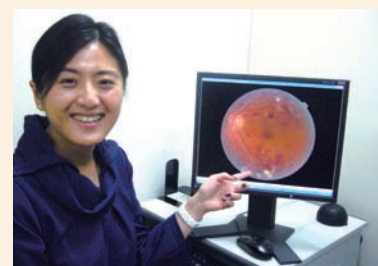
In October 2008, Dr. Pauline Cho, with 6 Optometry students and 16 volunteers (including optometrists and 4 Rotarians) went to Guangxi province once again to provide vision screening to local students of ethnic minority groups at the Li Dang Middle School. The team also screened children in Mashan Special School for the Handicapped. A total of 738 students were screened. Nine students referred for medical treatment/advice, mostly for conjunctivitis and cataract.

Thanks to the support of Rotary Club of Kowloon North and Alcon Hong Kong, a second trip was made to Guangxi to dispense 88 pairs of spectacles and one low vision aid in January 2009.



Importance of Primary Eye Care for People with Diabetes

A press conference was held on 22 January 2009 at The Integrative Community Health Centre (ICHC) in Lai King to raise the awareness of the importance of regular eye assessment for people with diabetes. ICHC is one of the School of Optometry's satellite clinics. It has taken the lead in providing a diabetes retinopathy (DR) screening service to the community, following the signing of an agreement between the School of Optometry and the Kwai Tsing Safe Community and Healthy City Association in May 2006. Data collected from November 2005 to December 2008 were presented during the press conference. Out of 14,385 diabetic patients seen at the ICHC, approximately 47% are males and 53% are females. 30% of the patients have signs of DR. Approximately 977 (6.8%) patients were referred for further medical attention. Since many elderly people have diabetes, the government was urged to allow elderly citizens to use their government-issued health-care vouchers for eye care services.



OUR PEOPLE



External Appointments

Prof. Carly Lam and Prof. To Chi-ho have been appointed as Visiting Professor of the Zhongshan Ophthalmic Center, Sun Yat-sen University.

Honorary and Adjunct Appointments of the School

Honorary Professor:



Prof. Hermann
Barry Collin
(re-appointment)
(University of New South Wales)



Prof. Ge Jian
(re-appointment)
(Sun Yat-sen University)

New Adjunct Associate Professor:



Dr. Desmond Cheng
Dip(Opt), OD, MSc, FAAO
(new appointment)
(Private Optometrist)

Dr. Desmond Cheng is a graduate of our School and is practicing in Canada. His research interest is in myopia.



Mr. Simon Yeung
LLB
(new appointment)
(Private Solicitor)

Mr. Simon Yeung is a practicing solicitor in Hong Kong. He has supported PolyU-Optometry and the Optometry profession for over 15 years.

OUR PEOPLE



Excellence in Teaching Awards

Prof. Peter Swann and Dr. Andrew Lam were awarded the Excellence in Teaching Awards for the academic year 2008-2009.



Long Service Award

Dr. Pauline Cho received the 20 year Service Award from the PolyU.

PolyU Vice-President's Cup Inter-faculty Staff Badminton Competition 2008

Prof. To Chi-ho and Prof. Liu Quan won the Men's Double in the competition this year. Congratulations!



Standard Chartered Hong Kong Marathon 2009

Miss Cecilia Tong, Optometry Resident, joined the PolyU running squad and took part in the 10 km run of the Standard Chartered Hong Kong Marathon 2009. She was awarded the 2nd runner-up (female) in the staff group among over 600 PolyU participants.



ACADEMIC VISITORS TO THE SCHOOL OF OPTOMETRY



Emeritus Professor Günter Niemeyer

Ophthalmology and Neurophysiology, University of Zurich, Switzerland

Date: 12 January 2009

Prof. Robert F. Hess

Professor and Director of Research, Department of Ophthalmology,
Director of McGill Vision Research Unit, Faculty of Medicine, McGill
University, Canada

Date: 17-22 January 2009



Prof. William K. Stell

Professor, Department of Cell Biology and Anatomy, Department
of Surgery, Division of Ophthalmology, Hotchkiss Brain Institute,
Lions Centre for Retinal Degeneration Research, Faculty of Medicine,
University of Calgary, Canada

Date: 10 February 2009



Prof. Ricky Man

Chairman, Optometrists Board

Date: 12 February 2009



Dr. June Crown, CBE

Special Advisor, World Health Organization (WHO)

Date: 23-25 February 2009

OUR RESEARCH

Orthokeratology Research in PolyU

With the generous support and funding from Menicon Co. Ltd (Japan), we have commenced a randomized myopia control (MC) clinical trial in children using Menicon Z Nightlens lenses and Menicon Z Nightlens toric lenses on myopes and myopic astigmats respectively. We will also investigate the role of peripheral refraction in ortho-k using Menicon Z lenses.



For high myopic children, we are investigating the potential of partial reduction with ortho-k in slowing myopic progression using DreamLite lenses sponsored by Procornea Nederland B.V.

With the Myopia Niche Area funding, we will continue the investigation on safety and ocular changes in ortho-k. We will evaluate changes to the cornea, not only at tissue level but also at cellular level using the Confocal microscope. Collaborating with Dr Maureen Boost of HTI, we will evaluate the microbial contamination and adhesion in high Dk ortho-k lenses.

Our findings will expand our knowledge about ortho-k and help clinicians to practice ortho-k safely, efficiently, and professionally.

Conference Presentations

Presenter	Conference	Title of Presentation
Dr. Do Chi-wai	The 7th Congress of the Asian Oceanic Glaucoma Society (Guangzhou, China), 6 – 7 Dec 2008	Signaling pathway in regulation of aqueous inflow
Dr. Pauline Cho	9th International Congress of Ophthalmology and Optometry China (Jinan, China), 27 – 29 Mar 2009	Seven years longitudinal study on myopic children wearing orthokeratology lenses
Dr. Kee Chea-su	9th International Congress of Ophthalmology and Optometry China (Jinan, China), 27 – 29 Mar 2009	Regional variation of scleral proteoglycan synthesis in chicks developing myopia and astigmatism
Dr. Andrew Lam	9th International Congress of Ophthalmology and Optometry China (Jinan, China), 27 – 29 Mar 2009	Application of rebound tonometry after LASIK
Dr. Camus Choy	9th International Congress of Ophthalmology and Optometry China (Jinan, China), 27-29 Mar 2009	Cytotoxicity of contact lens care solutions

New Papers

Chen D, Lam AKC. Reliability and repeatability of the Pentacam on corneal curvatures. *Clin Exp Optom* 2009;92(2):110-118.

Cheng SC, Yap MK, Goldschmidt E, Swann PG, Ng LH, Lam CS. Use of the Optomap with lid retraction and its sensitivity and specificity. *Clin Exp Optom* 2008; 91: 373-378.

Cho P, Cheng SY, Chan WY, Yip WK. Soft contact lens cleaning: rub or no-rub? *Ophthalmic Physiol Opt* 2009; 29: 49-57.

Chu PH, Chan HH, Ng YF, Brown B, Siu AW, Beale BA, Gilger BC, Wong F. Porcine global flash multifocal electroretinogram: possible mechanisms for the glaucomatous changes in contrast response function. *Vision Res* 2008; 48: 1726-1734.

Law KM, Woo GC. Thyroid disease induced diplopia. *Clin Exp Optom* 2009; 92: 30-33.

Lam TC, Chun RK, Li KK, To CH. Application of proteomic technology in eye research: a mini review. *Clin Exp Optom* 2008; 91: 23-33.

Li SY, Yau SY, Chen BY, Tay DK, Lee VW, Pu ML, **Chan HH, So KF.** Enhanced survival of melanopsin-expressing retinal ganglion cells after injury is associated with the PI3 K/Akt pathway. *Cell Mol Neurobiol* 2008; 28: 1095-1107.

Sweeney D, Holden B, Evans K, Ng V, **Cho P.** Best practice contact lens care: A review of the Asia Pacific Contact Lens Care Summit. *Clin Exp Optom* 2009; 92: 78-89.

Upcoming Conferences / Seminars / Workshops

	Date & Venue	Details
Conferences	23-24 April 2009 Hong Kong Disneyland Hotel	The 6th Asia Cornea & Contact Lens Conference Website: http://www.acclc.org
	5-7 November 2009 Hong Kong Convention and Exhibition Centre and CEO Club Glorious Sun Hall, PolyU	The 17th Asia Pacific Optometric Congress cum The 7th Hong Kong Optometric Conference Website: http://www.asiapacificoptometry.org
Seminars	23 March 2009 HJ203, PolyU	Management of pellucid marginal corneal degeneration with intralimbal rigid gas permeable lens by Mr. Benny Tam
	25 May 2009 PolyU	Sports vision by Dr. David Kirschen and Dr. Daniel M. Laby
	30 May 2009 Jockey Club Auditorium, PolyU	Nobel Laureate Lecture - Development of the visual system: nature vs nurture by Prof. Torsten Wiesel

STUDENTS CORNER

OPTDS Cup

Every year, the Optometry Departmental Society (OPTDS) holds different sporting events for their members. The OPTDS Cup is an annual sports challenge for our members and staff to play sports together, including soccer, basketball and badminton. The most popular and exciting match is usually the soccer match. This year, the Year 1 Student Team won the championship, the Year 2 Student Team is the first-runner up and the Staff Team is the second runner-up. Well done, Year 1!



The Editor, In-focus, School of Optometry

The Hong Kong Polytechnic University, Hunghom, Kowloon, Hong Kong

E-mail: socarly@inet.polyu.edu.hk