

# In-focus

A quarterly newsletter of the PolyU Optometry Clinic  
Department of Optometry and Radiography  
The Hong Kong Polytechnic University



Vol. 1, Issue 1 June 2003

## Message from the Head of Department

This is the first newsletter of the PolyU Optometry Clinic. The need to produce this newsletter is testimony to the growth of optometry, the clinic and its activities. There are many more people to keep in touch with now than a decade ago. Through this newsletter, we hope to share with our graduates, students, colleagues and friends the latest happenings in PolyU Optometry.

The optometry profession in Hong Kong has changed immeasurably since the early 1980s and at every stage of change, PolyU Optometry has been at the forefront. In the course of the past 25 years, our programme has evolved from a day release higher certificate level training programme to one of the best optometry degree programmes in the world. Per capita, our research output is amongst the top in the world amongst optometry schools.

To date, close to 500 optometrists have graduated from PolyU. We are very proud of these graduates because they form the backbone of optometry profession in Hong Kong. Many graduates have set up their own practices to become independent practitioners. These are the role models for the optometry students of today.

To graduates, I hope you will find this newsletter a good way to keep in touch with what is happening in your "old school". To optometry friends and colleagues, I thank you for your support to our clinic and our profession.



A handwritten signature in black ink, appearing to read 'Maurice Yap'.

**Prof. Maurice Yap**  
Professor and Head  
Department of Optometry and Radiography  
The Hong Kong Polytechnic University

## What you really need to know.....

### SARS - do not spread it around!

#### For Optometrists

The outbreak of SARS in Hong Kong has increased awareness about personal and public hygiene. The PolyU Optometry Clinic produced some web pages in Chinese and English about infection control in optometric practice to give guidance to the profession. Contents include environmental and personal hygiene, disinfecting instruments, and guidelines on spectacle and contact lens dispensing. For details, please visit:

<http://www.polyu.edu.hk/or/clinic.htm>

#### For non-optometrists

As you may already have experienced, during the eye examination your optometrist needs to come quite close to you to examine the health of your eyes. What the SARS epidemic has taught us is that your optometrist must wear a mask in the consulting room, wash his hands and disinfect used instruments regularly. He may also ask you to wear a mask in the consulting room. These actions show that your optometrist cares about public health.

"SARS is harmful and dangerous to one's health. In other aspects, SARS may have some positive influences to one's thought. For instance, SARS has prompted people to be more aware of personal hygiene. We get useful information on protection through the PolyU's web pages. Hands are washed more frequently and thoroughly. As an optometry student, I think these thoughts are beneficial to both patients and practitioners. Patients are more alert to their health, including ocular health, particularly when dealing with contact lenses. SARS has raised the public awareness of personal hygiene, which is important to the profession"

*Miss Rachel Chun, Final Year Optometry Student, PolyU*

"The disastrous situation of SARS illustrates the importance of one fundamental principle in the health care system, i.e. "Prevention is better than cure". Prevention of disease should be emphasized to avoid, delay or reduce the risk of infection for both the practitioners and patients, from minor flu to the life threatening illness like SARS."

*Dr. Larry Ng, Clinical Optometrist, Optometry Clinic, PolyU*

## What's happening out there?

### The Hong Kong Scene

"The Hong Kong Retinal Degenerative Diseases Patient Registry" (香港視網膜退化病變患者登記冊) service has resumed in April 2003 after a short break due to budgetary constraints. The Registry is now jointly funded by Retina Hong Kong (formerly known as The Hong Kong Retinitis Pigmentosa Society), Faculty of Health and Social Sciences, and Department of Optometry and Radiography of PolyU. This is a collaborative effort of patients, optometrists, ophthalmologists, clinical geneticists and laboratory scientists, drawing expertise from the Clinical Genetic Service of Department of Health, private practitioners, School of Nursing, and the PolyU Optometry Clinic. The Registry service provides comprehensive eye care and genetic counseling services to patients with hereditary retinal diseases.

The Registry is a continuation of a research project originally funded by the Health Care and Promotion Fund of the Hong Kong Government in 1997. In the last five years, the project has generated an invaluable database which helps establish the first registry for the retinal degenerative diseases patients in Hong Kong. The current registry will continue to build this database which will facilitate further scientific, medical and sociological research that can improve the quality of life for the patients.

"Our partnership with Retina Hong Kong results in a vision programme that provides quality eye care services to the RP patients at the University Optometry Clinic. At the same time, important clinical data are collected for the Registry. In addition, some clinical research projects may evolve from the programme," said Prof. George Woo, Dean of the Faculty of Health and Social Sciences and a world renowned expert on vision rehabilitation.

Jockey Club Visual Rehabilitation  
Centre operated by Retina Hong Kong





## Our People

### New Vice President of APCO



Prof. George Woo, Dean of the Faculty of Health and Social Sciences and Chair Professor of Optometry, has been elected Vice President of the Asia-Pacific Council of Optometry (APCO). Prof. Woo has had a long standing interest in the development of optometry education and the optometry profession in Asia. He is one of the most well known and respected figures in international optometry.

### New Honorary Professor

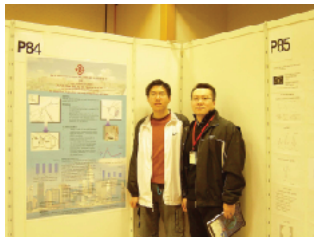


Pro. Ge (left) and Dr. the Honourable E.K. Yeoh, the Secretary for Health, Welfare and Food at the 9th International Myopia Conference.

Prof. Ge Jian, Director of Zhongshan Ophthalmic Centre (ZOC), Sun Yat-sen University (Guangzhou), has been appointed Honorary Professor in our department. Prof. Ge has collaborated with us on a number of projects, including the highly successful 9th International Conference on Myopia held in November 2002. All our Year 3 optometry students undertake a 2-week clinical rotation at the ZOC.

### Conference Presenters

Dr. Henry Chan and two of his research students (Anderson Tam and Forrest Ng) presented papers at the 4th International Society for Clinical Electrophysiology of Vision Conference in Nagoya, Japan. Anderson Tam received a travel grant from the conference organizer. Dr. Chan's research is supported by a grant from the Research Grants Council of Hong Kong.



Dr. Henry Chan (right) and his research student

#### *Dr. Henry Chan, Dr. Manson Leung, Dr. So Kwok-fai*

The neuro-protective effect of electro-acupuncture on induced-glaucoma rats measured by multifocal electroretinogram (mfERG)

#### *Dr. To Chi-ho, Dr. Henry Chan, Dr. Shabidullah Mohammad, Mr. Forrest Ng*

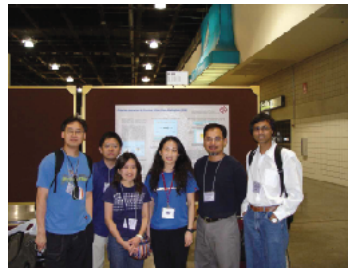
In-Vitro mfERG measurement of perfused pig eye

#### *Prof. Brian Brown, Dr. Henry Chan, Mr. Patrick Chu*

New approach in detecting the inner retinal activity by mfERG

#### *Prof. Maurice Yap, Prof. Brian Brown, Dr. Henry Chan, Mr. Anderson Tam*

The effects of different degrees of cataract on mfERG  
The effects of forward light scattering on mfERG



Dr. To Chi-ho (left), Dr. Andrew Siu (2nd from right) and their research students

Dr. To Chi-ho, Dr. Andrew Siu and their research students presented papers at the 75th annual meeting of The Association for Research in Vision and Ophthalmology (ARVO 2003) in Florida, USA.

#### *Dr. To Chi-ho*

Chloride secretion by porcine ciliary body epithelium

#### *Dr. Andrew Siu*

Absolute light detection and temporal modulation sensitivities: effects of pupil diameter

#### *Dr. Shabidullah Mohammad*

Multifocal electroretinography in isolated arterially perfused bovine eye

#### *Miss Carolina Chan*

Measurement of aqueous humor formation rate using a modified Ussing-Type chamber by capillary method

#### *Miss Bibianna Yu*

Nearwork-induced transient myopia in emmetropes and myopes

### Academic Visitor

Prof. Larry Thibos of Indiana University, whose achievement in optometry and visual science is widely recognized, visited PolyU from 23 to 29 March. During his visit, Prof. Thibos delivered a lecture on "Variability in the Aberration Maps of the Human Eye & Where is the Far-Point in an Aberrated Eye?". Prof. Thibos also acted as external examiner to one of our research students.



(From left) Mrs. Thibos, Prof. Yap, Head of OR, Prof. Thibos & Dr. Han Wei

## News from.....

### The Clinic

The new Children's Vision Service is in operation after 2 years of planning. It is important to screen young children for amblyogenic factors, including high refractive error, anisometropia, strabismus and media opacities. To see our "state-of-the-art" Children's Vision Clinic, please visit:

<http://www.polyu.edu.hk/or/cvs.htm>



## The Research Lab

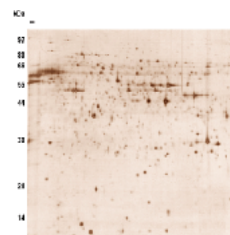
To read a whole issue of Clinical and Experimental Optometry dedicated to our research, please go to:

<http://www.optometrists.asn.au/ceo/vol85/6/ceo856contents.html>

### So, what's new?

**Mr. Tang Churk-yan** "I have designed a new instrument for measuring crystalline lens transmission. This instrument will allow us to determine how much of the visual performance deterioration in the elderly is due to reduction in retinal illuminance."

**Dr. To Chi-bo** "Through our proteomic studies, we have identified some proteins which are present in greater quantity in the myopic chick eye than the non-myopic chick eye. This raises all sorts of interesting possibilities."



2D protein profile of chick retina

## Seminars / Workshops / Conferences

### Invited Lectures by Staff Members of PolyU's School of Nursing

We invited microbiologists Ms. Polly Leung and Mrs. Maureen Boost to give lectures on "Effect of Storage Temperature on the Efficacy of Soft Contact Lens Solutions" and "Microbial Flora of Tears of Ortho-k Patients, and Microbial Contamination of Contact lenses and Contact Lens Accessories" on 27 March. Ms. Leung and Mrs. Boost are frequent research collaborators with optometry staff, particularly on microbiological issues related to contact lens wear.

### Seminars

Our research personnel conduct regular seminars to let us know their latest finding. These seminars are very well attended by staff and research students.

#### 4 March Miss Bibianna Yu

Nearwork-Induced Transient Myopia in Emmetropes and Myopes

#### 18 March Miss Anson Chau

The Size of the Eye and Orbit in Myopia

#### 6 May Miss Tang Wing-chun

Identifying Susceptibility Genes of Myopia by Family-based Association Study

#### 20 May Mr. Anderson Tam

The Effect of Forward Light Scattering on Multifocal Electroretinograms (mfERG)



### Continuing Professional Development Programmes

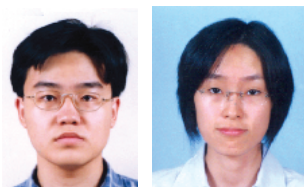
Continuing education is an important way to enhance optometry professionalism. We have the following programmes lined up:

- ◆ A Comprehensive Course in Orthokeratology
- ◆ Uses of Ocular Pharmaceuticals in Optometric Practice
- ◆ Soft (Spherical) Contact lens

Please check <http://www.polyu.edu.hk/or> for the latest details.

## Students Corner

### 2002/03 First Class Honour Graduates



Top of the class in 2003 are Mr. Cheng Chi Kwan and Miss Chun Ka Man. Their hard work have paid off!

### Awards to Students

#### Choy Pik Yin

Sir Edward Youde Memorial Fellowship

#### Chun Ka Man

HKSPD CO IV Prize

S.K.Yee Medical Foundation Scholarship

#### Ho Kwai Ying

Sonca Gold Medal Award

#### Ip Koon Ching

Sir Edward Youde Memorial Scholarship

#### Law Cheung Sing

Ciba Vision Contact Lens Prize

#### Tam Bing Tim

B&L Contact Lens Prize

### Congratulations and well done!

The Editor, *In-focus*  
Department of Optometry and Radiography  
The Hong Kong Polytechnic University  
Hung Hom, Kowloon, Hong Kong  
E-mail: [ormyap@polyu.edu.hk](mailto:ormyap@polyu.edu.hk)

The submission deadline for the October 2003 Issue is  
9 September 2003