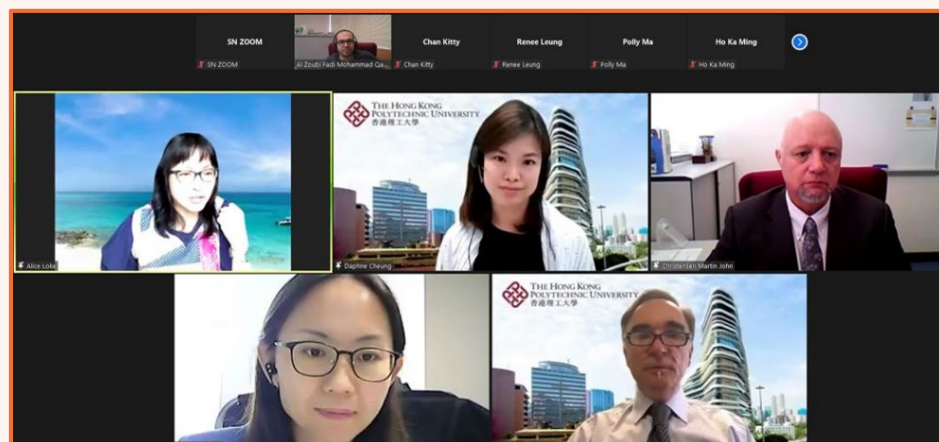


SN NEWSLETTER

"To excel in Nursing for the well-being of mankind"

COVER STORY

New centres for enhancing interdisciplinary qualitative research and evidence-based practice



The School held the opening ceremonies of the Interdisciplinary Centre for Qualitative Research (ICQR) and the Centre for Advancing Patient Health Outcomes: A JBI affiliated Group in June and July respectively.



The ICQR is Asia's FIRST Interdisciplinary Centre for Qualitative Research to provide a new platform to facilitate inter-departmental, and inter-institutional knowledge sharing, ideas exchange, joint grant applications and research collaboration. This new Centre is a significant step forward taken by the School to take the lead in advancing qualitative research development and expertise in Asia and beyond. The ICQR is partnering with some world-renowned universities including the Karolinska Institutet and Malmo University's in Sweden; the University College Dublin in Ireland; Manchester Metropolitan University and the University of Derby in the UK, and West Attica University in Greece. Our list of local and global partners will continue to expand.

Led by the Director of the ICQR, **Dr Martin Christensen** (Associate Professor & Associate Head), a series of activities will be organised by the Centre, for example training sessions on qualitative systematic reviews and meta-syntheses. The Centre is developing a qualitative research training database to provide digital convenience for researchers and academia to list their qualitative research projects for collaborative research opportunities and for students to initially identify their potential supervisors.



The opening of the Centre for Advancing Patient Health Outcomes and our joining of the family of the JBI Collaboration (JBIC) was a big event in July. As a new member of the JBIC, the School is having new opportunities to work along with over 75 collaborating entities across 40 countries for achieving the mission and mission of the JBI.

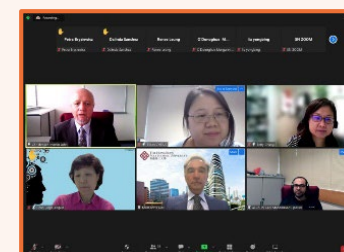
Led by Dr Martin Christensen, the Centre for Advancing Patient Health Outcomes is the ONLY centre in Hong Kong that is affiliated to the JBI. We play a unique strategic role in partnering with other JBI affiliated groups in the region, and particularly in Greater China, to promote evidence informed approaches to impact health policies and enhance nurses' capacity to implement evidence into practice. Being the FORTH JBI affiliated group in the Greater Bay Area in Mainland China, the Centre has a larger objective of developing closer collaborative partnerships with

the other three JBI affiliated groups in the Greater Bay Area to join efforts to build capacity for evidence-based practice and research projects that enhance quality of the service and advance patient health outcomes.

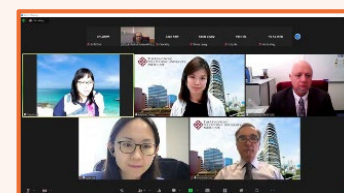
With the opening of the two new centres, the School is confident that we will enhance our capacity in qualitative research and scholarship and expand our networks with partners in the region and around the globe to enhance evidence-based nursing practice and advance patient health outcomes.



Prof. David Shum, Chair Professor of Neuropsychology & Dean of Faculty of Health and Social Sciences, gave a welcoming address to kick off the opening ceremony of the ICQR.



Over 50 participants from different countries joined the opening ceremony of the ICQR.



Prof. Alice Yeun Loke (top row, 1st from left), Honorary Professor and the speaker for the webinar held following the opening ceremony of Centre for Advancing Patient Health Outcomes. Mrs Bianca Pilla, the Director of Global Relations at JBI; and Ms Yanni Wu (lower row, 1st from left), Asia Regional Coordinator for JBI gave opening remarks for the event.

School received Faculty Award in Services

In recognition of the School's outstanding community services during the fifth-wave of the COVID-19 outbreak, the Faculty Award in Services (Team) has been given to the School. The team members receiving the award include **Prof. Alex Molasiotis**, Head of the School (Team Leader); **Prof. E Angela Chan**, Associate Head (Undergraduate Education) & Professor; **Mr Edmond Tong**, Senior Clinical Associate; **Mr Timothy Lai**, Clinical Associate; and **Ms Frankie Cheung**, Clinical Instructor. Congratulations!

School ranked top in Hong Kong and Asia

The School is ranked 21st (vs 48th in 2021 and 51st to 75th in 2020) in the ShanghaiRanking's Global Ranking of Academic Subjects (GRAS) 2022. We lead the rankings of the BEST universities offering nursing subjects in Hong Kong and in Mainland China (including Taipei), also hold the second place among universities offering nursing subjects in Asia.

Remarkable score increases were achieved by the School in the areas of research influence (72.2 in 2020 vs 76.5 in 2022), and research quality (50 in 2020 vs 65.9 in 2022), which have contributed to our leap in the rankings.

The 2022 GRAS contains rankings of universities in 54 subjects across Natural Sciences, Engineering, Life Sciences, Medical Sciences, and Social Sciences. More than 1,800 out of 5,000 universities across 96 countries and regions are listed in the rankings.

Research Away Day-Refining research directions and reshaping strategies

The Research Away Day was held on 28 and 30 June. **Prof. Alex Molasiotis**, Head of the School and **Prof. Angela Leung**, Professor & Associate Head (Research), kicked off the event by giving an overview of our research development and asking our researchers what direction we are heading to spark discussion and reflection.

Prof. Frances Wong, Chair Professor of Advanced Nursing Practice [& Associate Dean (FHSS)], shared the experience of the Research Assessment Exercise (RAE) and gave suggestions on how to prepare for the next RAE. Prof. Angela Leung gave suggestions on how to grasp research grant opportunities.

On the second research away day, **Dr Justina Liu**, Associate Professor, talked about the strategies for supporting research grant application and **Dr Grace Ho**, Associate Professor, led the participants to review the School's research themes and identify the resources and future opportunities for the themes. **Dr Betty Chung**, Teaching Fellow, and **Dr Kin Cheung**, Associate Professor, spoke about the challenges in supervising and enrolling PhD students to end the two-day discussion.



4.8 mil grant awarded to explore nurses' perceived fear of COVID-19 & identify ventilation strategies in hospitals

Dr John Yuen, Co-Principal Investigator (Associate Professor), is collaborating with Ir Prof. Horace Mui (Principal Coordinator) and Ir Dr Ling-Tim Wong of the Department of Building Environment and Energy Engineering to study the level of comfortability and quality of various indoor environmental aspects in hospital wards and the perceived fear of COVID-19 by nursing professionals, in relation to the setting of their working wards, indoor environmental quality, and job routine.

Their project titled 'Effective Ventilation Strategies for Mitigating Infection Risks in Hospitals' received the funding of over HK\$ 4.8 million from the Collaborative Research Fund COVID-19 and Novel Infectious Disease Research Exercise, the Research Grants Council.

Projects that have received the General Research Fund from the Research Grants Council recently		
Project Title	Principal Investigator	Total Grant (HK\$)
Effects of an Individualized Dietary Behavioural Change (IDBC) Programme and exercise training in combination or separately on managing sarcopenic obesity in community-dwelling older adults: A randomized controlled trial	Dr Justina Liu Associate Professor	1,240,907
Tai Chi for the prophylaxis of episodic migraine: the efficacy examination and mechanism exploration	Dr Grace Xie Assistant Professor	1,180,148
Listening to the patient’s cancer journey: A randomised controlled trial of digital storytelling (DST) in reducing depressive symptoms, enhancing self-esteem, and promoting quality of life among Hong Kong Chinese childhood cancer survivors	Dr Ka-yan Ho Assistant Professor	1,145,020
Is nurse parental support using a proactive mobile health application more effective than usual community care in enhancing parental self-efficacy in symptom management for the children with medical complexity in communities? A randomized control trial	Dr Winsome Lam Assistant Professor	983,370
Psychological distress and quality of life in palliative care patients with cancer cachexia and their primary family caregivers: Does dyadic symptom appraisal matter?	Dr Eileen Cheng Assistant Professor	965,734

Projects receiving external funding support			
Project Title	Principal Investigator	Funding Source	Total Grant (HK\$)
Evaluating the safety and efficacy of Transcranial Pulse Stimulation (TPS) on young adolescents with Autism Spectrum Disorder (ASD) – a double-blinded, randomized, sham-controlled trial	Dr Teris Cheung Assistant Professor	Start-up Fund for New Recruits	400,000
randomized, double-blinded, sham-controlled clinical trial to evaluate the effect of Electrical Vestibular Stimulation (VeNS) on Insomnia- The Modius Sleep Study	Dr Teris Cheung	Neurovalens (Donation)	359,775
A randomized, double-blinded, sham-controlled clinical trial to evaluate the effect of Electrical Vestibular Stimulation (VeNS) on Anxiety- The Modius Stress Study	Dr Teris Cheung	Neurovalens (Donation)	359,775
Evaluating the efficacy and safety of Transcranial Pulse Stimulation on young adolescents with attention-deficit-hyperactivity disorder- a pilot randomized, double-blinded, sham-controlled trial	Dr Teris Cheung	Associated Medical Supplies Co. Ltd.	200,000
An AI-based AR training and monitoring system for hand hygiene	Dr Lin Yang Associate Professor	Departmental General Research Fund	150,000
Feasibility of telephone-based Acceptance and Commitment Therapy in Hong Kong Chinese young adults with alcohol use disorder: A pilot study	Dr Ka-yan Ho	Departmental General Research Fund	150,000
Coolminds, a Mind HK and KELY Support Group Initiative: A service evaluation	Dr Grace Ho Associate Professor	Mind Mental Health Hong Kong Limited	75,000
The secrets of healthy near-centenarians and centenarians in Hong Kong: how well are they ageing – one year follow up	Dr Justina Liu	Sik Sik Yuen (Donation)	57,291
Projects receiving internal funding support			
Project Title	Principal Investigator	Funding Source	Total Grant (HK\$)
A pilot neuroimaging-based experimental study to explore the effect of Tai Chi on the alleviation of white matter lesions among migraine with aura women	Dr Grace Xie	PolyU Research Center for Chinese Medicine Innovation	200,000



Shaping nursing students’ attitudes towards older people through online enquiry-based learning programme

Gerontological nursing education plays a key role in fostering the development of positive attitudes towards older adults¹, and effective strategies targeting attitudinal changes should involve experiential learning².

During the COVID-19 pandemic, clinical placements were suspended. Students had minimal exposure to and experience in working with older people³. Responding to this situation, **Dr Patrick Kor** (Assistant Professor; Project Leader) and **Dr Justina Liu**[^] (Associate Professor) developed an online self-regulated enquiry-based learning (EBL) programme to enhance the professional knowledge and skills of our students for identifying the health needs and implementing care plans for older people, and to promote positive attitudes towards older people.

Over 150 year-4 undergraduate nursing students participated in the online EBL programme. Five video-based scenarios simulating real life situations of older persons were given to the students for them to identify and explain the health problems, and propose solutions with evidence support. Interactive online workshops, a mind-map development exercise, group discussions and gamified assessments were conducted to support the students through their enquiry and learning journey.

Data were collected to evaluate nursing students’ online learning experiences and the impact of the EBL programme. Attitudes towards older people were measured at baseline and one week after the course (post-test) using the 34-item Attitudes Towards Older People Scale. Information on self-regulated learning experiences, learning satisfaction and confidence in learning, collected at post-test, was analysed. Focus group interviews were conducted online to explore the quantitative findings.

Gerontological nursing courses should prepare students to be competent and caring practitioners who understand the needs of older people and are ready to provide holistic care. The results of this study showed a significant positive improvement in the students' attitude towards older people. High levels of metacognitive skills, persistence in online education, satisfaction and self-confidence in learning were found among the students during the course. ‘Our innovative online EBL provides nursing faculties with an effective way to develop students' knowledge of gerontology and promote positive learning during the COVID-19 pandemic.’ Dr Patrick Kor concluded.

Click [here](#) to access the complete paper.

1. Hovey, S., Dyck, M., Reese, C., & Kim, M. (2017). Nursing students' attitudes towards persons who are aged: an integrative review. *Nurse Education Today*, 49, 145–152.
2. Burbank, P.M., Dowling-Castronovo, A., Crowther, M.R., & Capezuti, E.A. (2006). Improving knowledge and attitudes towards older adults through innovative educational strategies. *Journal of Professional Nursing*, 22 (2), 91–97.3.
3. Martin-Delgado, L., Goni-Fuste, B., Alfonso-Arias, C., de Juan, M.A., Wennberg, L., Rodríguez, E., & Martin-Ferreres, M.L. (2021). Nursing students on the frontline: impact and personal and professional gains of joining the health care workforce during the COVID-19 pandemic in Spain. *Journal of Professional Nursing*, 37(3), 588–597.

[^] Research team member: Prof. Rick Kwan, Professor, School of Nursing, Tung Wah College.

High acceptance of Blended Gaming COVID-19 Training System paves way for efficacy pilot test

The Centre launched the first phase of the pilot tests in September 2021 to understand the level of acceptance by the users towards their innovative interactive system, the Blended Gaming COVID-19 Training System (BGCTS) that aims to enhance the infection control knowledge among healthcare workers at local residential care homes.

Led by **Prof. Angela Leung** (Principal Investigator, Professor & Associate Head [Research]), the research team* interviewed six personnel recruited from the local residential care homes to find out the users’ experience in using the BGCTS and identify possible improvements to the system. Users’ suggestions on improving the user-friendly features and presentation format of the system were taken into consideration by the team. In general, the users described the BGCTS ‘informative and motivational’ for learning infection control practices. They considered the animations attractive, the games interesting and educational, and the overall experience fun and engaging.

The results were positive and the team is going to launch the second phase of the pilot test in November this year to test the effectiveness of the BGCTS in enhancing infection control practices among all staff in residential care homes.

The team is now recruiting 188 health care personnel from 20 residential care homes. The participants will be given two-week blended training (eight 15-minute e-learning [total 120 minutes]). After playing the games, they will attend two face-to-face group learning sessions, conducted by an infection control officer, to enhance their infection control knowledge.

The system is one of the COVID-19 commissioned research projects of the Food and Health Bureau and it secured over HK\$1.2 million from the Health and Medical Research Fund (HMRF) in 2020 for its development. The BGCTS, set with reference to usual practices in local residential care homes, is composed of eight themes, including proper use of personal protective equipment (PPE) for different healthcare activities, hand hygiene techniques, managing suspected or confirmed COVID-19 cases, techniques to communicate with suspected or confirmed COVID-19 patients at the healthcare facility, and stress coping for healthcare workers, and so forth.

Players engage in different scenarios to make decisions on implementing appropriate COVID 19 preventive measures and learn skills to handle suspected or confirmed cases to prevent an outbreak in a residential care home, as well as, to care for their physical and mental wellness during the pandemic. The infection control measures in the system are based on the WHO infection prevention and control guidelines in healthcare facilities and the infection control guidelines of Centre for Health Protection.

The research team expects positive results obtained from the efficacy pilot test, and the BGCTS can be proven effective in reinforcing infection control practice among healthcare workers in residential care homes for reducing the possibility of COVID-19 outbreaks.



Players of the games need to select the appropriate infection control measures in a residential care setting.

*Team members
Prof. Alex Molasiotis, Head of the School; Dr Daphne Cheung, Dr Doris YP Leung, and Dr Justina Liu, Associate Professors; and Mr Terence Lau, PhD student.

Research publications

- Abu-Odah, H., Molassiotis, A., & Yat Wa Liu, J. (2022). Analysis of the unmet needs of Palestinian advanced cancer patients and their relationship to emotional distress: results from a cross-sectional study. *BMC Palliative Care*, 21(1), [72]. <https://doi.org/10.1186/s12904-022-00959-8>
- Abu-Odah, H., Molassiotis, A., & Yat Wa Liu, J. (2022). Assessment of the educational and health care system-related issues from physicians' and nurses' perspectives before developing a palliative care program within the Palestinian health care system: a cross-sectional study. *Journal of Hospice & Palliative Nursing*, 24(3) E59-E75 doi: [10.1097/NJH.0000000000000840](https://doi.org/10.1097/NJH.0000000000000840)
- Abu-Odah, H., Said, N. B., Nair, S. C., Allsop, M. J., Currow, D. C., Salah, M. S., Hamad, B. A., Elessi, K., Alkhatib, A., EIMokhallalati, Y., Bayuo, J., & AlKhaldi, M. (ePub Ahead of Print). Identifying barriers and facilitators of translating research evidence into clinical practice: a systematic review of reviews. *Health and Social Care in the Community*. <https://doi.org/10.1111/hsc.13898>
- Abu-Odah, H., Su, J., & Musa, S. S. (2022). Unwillingness or reluctance of Palestinians to get the COVID-19 vaccine: the reasons behind it and how to persuade them. *International Journal of Infectious Diseases*, 119, 53-55. <https://doi.org/10.1016/j.ijid.2022.03.039>
- Bahwini, T., Zhong, Y., Gu, C., & Choi, K. S. (2022). System identification of biological cells by atomic force microscopy. *International Journal on Interactive Design and Manufacturing*, 16(2), 691-702. <https://doi.org/10.1007/s12008-022-00861-w>
- Bai, W., Cai, H., Wu, S., Zhang, L., Feng, K. X., Li, Y. C., Liu, H. Z., Du, X., Zeng, Z. T., Lu, C. M., Mi, W. F., Zhang, L., Ding, Y. H., Yang, J. J., Jackson, T., Cheung, T., An, F. R., & Xiang, Y. T. (2022). Internet addiction and its association with quality of life in patients with major depressive disorder: a network perspective. *Translational Psychiatry*, 12(1), [138]. <https://doi.org/10.1038/s41398-022-01893-2>
- Bai, W., Sha, S., Cheung, T., Su, Z., Ng, C. H., & Xiang, Y. T. (2022). Retractions of academic publications in psychiatry. *Asian Journal of Psychiatry*, 71, [103085]. <https://doi.org/10.1016/j.ajp.2022.103085>
- Bayuo, J., Abu-Odah, H., & Koduah, A. O. (ePub Ahead of Print). Components, models of integration, and outcomes associated with palliative/end-of-life care interventions in the burn unit: a scoping review. *Journal of Palliative Care*. <https://doi.org/10.1177/08258597221102735>
- Bello, U.M., Kannan, P., Chutiyami, M., Salihu, D., Cheong, A.M.Y., Miller, T., Pun, J.W., Muhammad, A.S., Mahmud, F.A., Jalo, H.A., Ali, M.U., Kolo, M.A., Sulaiman, S.K., Lawan, A., Bello, I.M., Gambo, A.A., & Winsor, S.J. (2022). Prevalence of anxiety and depression among the general population in Africa during the COVID-19 pandemic: A Systematic review and meta-analysis. *Frontiers in Public Health* <https://doi.org/10.3389/fpubh.2022.814981>
- Cai, H., Bai, W., Liu, H., Chen, X., Qi, H., Liu, R., Cheung, T., Su, Z., Lin, J., Tang, Y. L., Jackson, T., Zhang, Q., & Xiang, Y. T. (2022). Network analysis of depressive and anxiety symptoms in adolescents during the later stage of the COVID-19 pandemic. *Translational Psychiatry*, 12(1), [98]. <https://doi.org/10.1038/s41398-022-01838-9>
- Cai, H., Bai, W., Sha, S., Zhang, L., Chow, I. H. I., Lei, S. M., Lok, G. K. I., Cheung, T., Su, Z., Hall, B. J., Smith, R. D., & Xiang, Y. T. (2022). Identification of central symptoms in Internet addictions and depression among adolescents in Macau: a network analysis. *Journal of Affective Disorders*, 302, 415-423. <https://doi.org/10.1016/j.jad.2022.01.068>
- Cai, H., Bai, W., Zheng, Y., Zhang, L., Cheung, T., Su, Z., Jackson, T., & Xiang, Y. T. (2022). International collaboration for addressing mental health crisis among child and adolescent refugees during the Russia-Ukraine war. *Asian Journal of Psychiatry*, 72, [103109]. <https://doi.org/10.1016/j.ajp.2022.103109>
- Chan, K., Wong, K. Y., Tam, S. L., Kwok, C. P., Fung, Y. P., & Wong, P. N. (2022). Effectiveness of a brief hope intervention for chronic kidney disease patients on the decisional conflict and quality of life: a pilot randomized controlled trial. *BMC Neurology*, 23(1). <https://doi.org/https://pubmed.ncbi.nlm.nih.gov/35701732/>
- Chen, S. C., Yu, J., Wang, H. S., Wang, D. D., Sun, Y., Cheng, H. L., Suen, L. K. P., & Yeung, W. F. (2022). Parent-administered pediatric tuina for attention deficit/hyperactivity disorder symptoms in preschool children: a pilot randomized controlled trial embedded with a process evaluation. *Phytomedicine*, 102, [154191]. <https://doi.org/10.1016/j.phymed.2022.154191>
- Cheng, W. Y., Ho, Y. S., & Chang, R. C. C. (2022). Linking circadian rhythms to microbiome-gut-brain axis in aging-associated neurodegenerative diseases. *Ageing Research Reviews*, 78, [101620]. <https://doi.org/10.1016/j.arr.2022.101620>
- Cheung, A. T., Li, W. H. C., Ho, L. L. K., Chan, G. C. F., Lam, H. S., & Chung, J. O. K. (ePub Ahead of Print). Efficacy of mobile instant messaging-delivered brief motivational interviewing for parents to promote physical activity in pediatric cancer survivors: a randomized clinical trial. *JAMA Network Open*, E2214600. <https://doi.org/10.1001/jamanetworkopen.2022.14600>
- Cheung, A. T., LI, W. H. C., HO, L. L. K., Xia, W., LUO, Y. H., Chan, G. C. F., & Chung, O. K. (2022). Associations of physical activity and handgrip strength with different domains of quality of life in pediatric cancer survivors. *Cancers*, 14(10):2554. <https://doi.org/10.3390/cancers14102554>
- Chung, J. Y. S., Li, W. H. C., Cheung, A. T., Ho, L. L. K., & Chung, J. O. K. (2022). Efficacy of a blended learning programme in enhancing the communication skill competence and self-efficacy of nursing students in conducting clinical handovers: a randomised controlled trial. *BMC Medical Education*, 22(1), [275]. <https://doi.org/10.1186/s12909-022-03361-3>
- Chutiyami, M., Bello U.M., Salihu, D., Ndwiga, D., Kolo M.A., Maharaj, R., Naidoo, K., Devar, L., Pratitha, P., & Kannan, P. (2022). COVID-19 pandemic-related mortality, infection, symptoms, complications, comorbidities, and other aspects of physical health among healthcare workers globally: An Umbrella Review. *International Journal of Nursing Studies*. <https://doi.org/10.1016/j.ijnurstu.2022.104211>
- Chutiyami, M., Cheong, A.M.Y., Salihu, D., Bello, U.M., Ndwiga, D., Maharaja, R., Naidoo, K., Kolo, M.A., Jacob, P., Chhina, N., Ku, T.K., Devar, L., Pratitha, P., & Kannan, P. (2022). COVID-19 pandemic and overall mental health of healthcare professionals globally: A meta-review of systematic reviews. *Frontiers in Psychiatry*. <https://doi.org/10.3389/fpsy.2021.804525>
- Deng, Z., Liang, L., Zhang, W., Lou, Q., Choi, K. S., Zhang, T., Zhou, J., & Wang, S. (ePub Ahead of Print). Enhanced multi-view fuzzy clustering using double visible-hidden view cooperation and network LASSO constraint. *IEEE Transactions on Fuzzy Systems*. <https://doi.org/10.1109/TFUZZ.2022.3164796>
- Ho, K. H. M., Yang, C., Leung, A. K. Y., Bressington, D., Chien, W. T., Cheng, Q., & Cheung, D. S. K. (2022). Peer support and mental health of migrant domestic workers: a scoping review. *International Journal of Environmental Research and Public Health*, 19(13), [7617]. <https://doi.org/10.3390/ijerph19137617>

Research publications (con't)

- Ho, K. Y., Cheung, P. M., Cheng, T. W., Suen, W. Y., Ho, H. Y., & Cheung, D. S. K. (2022). Virtual reality intervention for managing apathy in people with cognitive impairment: systematic review. *JMIR Aging*, 5(2), [e35224]. <https://doi.org/10.2196/35224>
- Ho, L. L. K., Li, W. H. C., Cheung, A. T., Luo, Y., Xia, W., & Chung, J. O. K. (2022). Impact of poverty on parent-child relationships, parental stress, and parenting practices. *Frontiers in Public Health*, 10, [849408]. <https://doi.org/10.3389/fpubh.2022.849408>
- Kor, P. P. K., Yu, C. T. K., Liu, J. Y. W., Cheung, D. S. K., Kwan, R. Y. C., Leung, A. Y. M., Liu, D. P. M., & Hon, J. M. K. (ePub Ahead of Print). Pilot evaluation of a home-based multi-sensory cognitive stimulation intervention for older people with dementia and caregiver dyads during the COVID-19 pandemic. *International Journal of Older People Nursing*, <https://doi.org/10.1111/opn.12471>
- Kwan, R. Y. C., Liu, J. Y. W., Yin, Y. H., Lee, P. H., Ng, S. Y., Cheung, D. S. K., Kor, P. P. K., Lam, S. C., Lo, S. K. L., Yang, L., Chan, S. K., & Chiang, V. C. L. (2022). Sarcopenia and its association with objectively measured life-space mobility and moderate-to-vigorous physical activity in the oldest-old amid the COVID-19 pandemic when a physical distancing policy is in force. *BMC Geriatrics*, 22(1), [250]. <https://doi.org/10.1186/s12877-022-02861-7>
- Li, Y., Chien, W. T., Cheung, D. S. K., Wang, S., Qin, J., & Bressington, D. (2022). Culturally sensitive psychosocial care program for chinese people with spinal cord injury during inpatient rehabilitation. *Anadolu Psikiyatri Dergisi*, 23(3), 140-141. <https://doi.org/10.5152/alphapsychiatry.2022.21715>
- Liang, S., Hang, W., Yin, M., Shen, H., Wang, Q., Qin, J., Choi, K. S., & Zhang, Y. (2022). Deep EEG feature learning via stacking common spatial pattern and support matrix machine. *Biomedical Signal Processing and Control*, 74, [103531]. <https://doi.org/10.1016/j.bspc.2022.103531>
- Liu, R., Qi, H., Chen, X., Cheung, T., Jackson, T., Wang, G., & Xiang, Y. T. (2022). Responses to the comment: anxiety and depression among Chinese adolescents during the COVID-19: an overestimation of the problem. *Translational Psychiatry*, 12(1), [64]. <https://doi.org/10.1038/s41398-022-01826-z>
- Liu, T. W., Ng, S. M. S., Tsoh, J., Chen, P., Xu, H., Wong, W. L., & Tse, M. Y. M. (2022). Translation and initial validation of the Chinese (Cantonese) brief 2-way social support scale for use in people with chronic stroke. *BioMed Research International*, [3511631]. <https://doi.org/10.1155/2022/3511631>
- Lo, K. L. S., Liu, Y. W. J., Cheung, D. S. K., Yin, Y., Ng, S. Y., Kor, P. K., Yang, L., Chan, S. K., Kwan, Y. C., Lee, H. P., & Chiang, C. L. V. (2022). "How are you doing?" on the healthy aging of the community-dwelling oldest-old in the shadow of the COVID-19 pandemic. *Research on Aging*. <https://doi.org/10.1177/01640275221100949>
- Lou, Q., Deng, Z., Choi, K. S., Shen, H., Wang, J., & Wang, S. (2022). Robust multi-label relief feature selection based on fuzzy margin co-optimization. *IEEE Transactions on Emerging Topics in Computational Intelligence*, 6(2), 387-398. <https://doi.org/10.1109/TETCI.2020.3044679>
- Luo, Y., Li, H. C. W., Xia, W., Cheung, A. T., Ho, L. L. K., & Chung, J. O. K. (2022). The lived experience of resilience in parents of children with cancer: a phenomenological study. *Frontiers in Pediatrics*, 10, [871435]. <https://doi.org/10.3389/fped.2022.871435>
- Musa, S. S., Yusuf, A., Zhao, S., Abdullahi, Z. U., Abu-Odah, H., Saad, F. T., Adamu, L., & He, D. (2022). Transmission dynamics of COVID-19 pandemic with combined effects of relapse, reinfection and environmental contribution: a modeling analysis. *Results in Physics*, 38, [105653]. <https://doi.org/10.1016/j.rinp.2022.105653>
- Pang, P. C. P., Cheung, D. S. K., & Chiang, V. C. L. (2022). Visual art intervention for people with stroke on holistic well-being: a critical review. *Journal of Holistic Nursing*, 40(2), 123-145. <https://doi.org/10.1177/08980101211032062>
- Salihu, D., Wong, E.M.L., Kwan, R.Y.C., Bello U.M., Chutiyami, M., Leung, A.Y.M., Miller, T., Ibrahim, A.A., Jalo, H.A., & Leung, D.Y.P. (2022). Translation, cross-cultural adaptation, and psychometric properties of the Hausa version of the Insomnia Severity Index among internally displaced persons in Africa. *Sleep Medicine*. <https://doi.org/10.1016/j.sleep.2022.03.011>
- Salihu, D., Wong, E. M. L., Kwan, R.Y.C, Ho, G.W. K., Chutiyami, M, Surajo, K.S., [Bello, U.M.](#), Ibrahim, A.A., Ali, M.U., Wang, S., Bashir, K., Jalo, H.A., Muhammad, M.M., Sulaiman, A.A., Ajio, D.K., Ali., G.M., & Leung, D.Y.P. (2022). Anxiety, depression and stress among internally displaced persons and host community in an armed conflict region: a comparative study. *Psychiatry Research*, 315, <https://doi.org/10.1016/j.psychres.2022.114700>
- So, B. P. H., Lai, D. K. H., Cheung, D. S. K., Lam, W. K., Cheung, J. C. W., & Wong, D. W. C. (2022). Virtual reality-based immersive rehabilitation for cognitive-and behavioral-impairment-related eating disorders: a VREHAB framework scoping review. *International Journal of Environmental Research and Public Health*, 19(10), [5821]. <https://doi.org/10.3390/ijerph19105821>
- Wang, G., Choi, K. S., Teoh, J. Y. C., & Lu, J. (2022). Deep cross-output knowledge transfer using stacked-structure least-squares support vector machines. *IEEE Transactions on Cybernetics*, 52(5), 3207-3220. <https://doi.org/10.1109/TCYB.2020.3008963>
- Wang, G., Zhou, T., Choi, K. S., & Lu, J. (2022). A deep-ensemble-level-based interpretable Takagi-Sugeno-Kang fuzzy classifier for imbalanced data. *IEEE Transactions on Cybernetics*, 52(5), 3805-3818. <https://doi.org/10.1109/TCYB.2020.3016972>
- Xie, H., Song, J., Zhong, Y., Gu, C., & Choi, K. S. (2022). Constrained finite element method for runtime modeling of soft tissue deformation. *Applied Mathematical Modelling*, 109, 599-612. <https://doi.org/10.1016/j.apm.2022.05.020>
- Yang, Y., Zhang, W. Y., Zhang, Y., Li, S., Cheung, T., Zhang, D., Jackson, T., He, F., & Xiang, Y. T. (2022). Structure of hypomanic symptoms in adolescents with bipolar disorders: a network approach. *Frontiers in Psychiatry*, 13, [844699]. <https://doi.org/10.3389/fpsy.2022.844699>
- You, R., Ho, Y. S., & Chang, R. C. C. (2022). The pathogenic effects of particulate matter on neurodegeneration: a review. *Journal of Biomedical Science*, 29(1), [15]. <https://doi.org/10.1186/s12929-022-00799-x>
- Zhang, L., Cai, H., Bai, W., Zou, S. Y., Feng, K. X., Li, Y. C., Liu, H. Z., Du, X., Zeng, Z. T., Lu, C. M., Zhang, L., Mi, W. F., Ding, Y. H., Yang, J. J., Jackson, T., Cheung, T., Su, Z., An, F. R., & Xiang, Y. T. (2022). Prevalence of suicidality in clinically stable patients with major depressive disorder during the COVID-19 pandemic. *Journal of Affective Disorders*, 307, 142-148. <https://doi.org/10.1016/j.jad.2022.03.042>
- Zhao, Y. J., Jin, Y., Zhang, Q., Su, Z., Cheung, T., Zheng, W., Ng, C. H., & Xiang, Y. T. (ePub Ahead of Print). Considerations before the decision-making including fluvoxamine as a treatment option in guidelines on the management of COVID-19. *Psychological Medicine*. <https://doi.org/10.1017/S0033291722000022>
- Zhou, N., Choi, K. S., Chen, B., Du, Y., Liu, J., & Xu, Y. (ePub Ahead of Print). Correntropy-based low-rank matrix factorization with constraint graph learning for image clustering. *IEEE Transactions on Neural Networks and Learning Systems*. <https://doi.org/10.1109/TNNLS.2022.3166931>

Staff

- *Prof. Angela Leung* has been elected as a member of the Global Executive Board of International Union of Health Promotion and Education (IUHPE) for 2022-2025. IUHPE takes the lead in health promotion world-wide and it has been closely collaborating with international organisations (such as World Health Organization and United Nations) and governments of many countries. Click [here](#) to learn more about IUHPE.
- *Prof. Alex Molasiotis*, Head of the School, is ranked 121st in the Top Medicine Scientist in Mainland China by Research.com, an academic research portal. He is the only nursing professor in Hong Kong listed in this ranking. Click [here](#) for the details.
- *Dr Grace Xie*, Assistant Professor, has been invited to be Review Editor, for the *Frontiers in Cardiovascular Medicine*.
- Congratulations to *Dr Yan Li* on her promotion from Research Assistant Professor to Assistant Professor – Presidential Young Scholar. The promotion was made under the University's recently established Presidential Young Scholars Scheme (PYSS). Appointee under the PYSS are conferred the title of "Presidential Young Scholar" for the initial 3 years of their appointment. They will be provided with a start-up grant of not less than HK\$3 million in total for the initial 3 years of appointment to support their career development.
- *Dr Doris Y.P. Leung*, Associate Professor, has been invited as a Lead Consultant for the Chinese Medical Research Training II - Introduction to Biostatistics Training for the Hospital Authority (commencing April to August 2022).
- *Prof. E Angela Chan*, Associate Head (Undergraduate Education) & Professor; *Ms Fionca Tse*, Clinical Associate; *Dr Cynthia Wu*, Senior Teaching Fellow; *Dr Margaret O'Donoghue*, Associate Professor; *Dr Betty Chung*, Teaching Fellow; *Ms Anne Yeung*, Assistant Technical Officer; *Ms Barbara Lee*, Executive Officer; *Ms Kiki Chung* and *Ms Joe Ngan*, Clerical Officers II awarded the long service awards 2021.

Staff movement

- Welcome to *Ms Wing-yan Kylie Tsang*, Executive Assistant; *Ms Wing-ka Florence Fong*, Administrative Assistant, *Ms Wai-in Jeong*, Assistant Officer; and *Ms Edith Wong*, Executive Officer, who joined the School from May to July.
- Congratulations to *Dr Stefanos Tyrovolas*, on his promotion from Research Assistant Professor to Assistant Professor; *Dr Jingjing Su*, *Dr Shanshan Wang* and *Dr Ivy Zhao*, on their promotions from Postdoctoral Fellows to Research Assistant Professors.
- Farewell to *Mr Priere Law*, Assistant Information Technology Officer; *Dr Shirley Ching*, Associate Professor; *Mr Edison Lau*, Assistant Officer; *Dr Phyllis Pang*, Clinical Associate (retired); and *Mr Eddie Wong*, Technical officer (retired). We thank them for their contribution during the time with us.



Happy retirement! Prof. E Angela Chan [Associate Head (Undergraduate Education) & Professor] expressed gratitude to Dr Phyllis Pang (left) for her contribution.

Students

Student awarded Innovation and Technology Scholarship

Ms Chung-hang Chau, our year-four student from the BSc (Hons) in Nursing programme, has been awarded the Innovation and Technology Scholarship 2022. She is the THIRD SN students who has been selected to receive this competitive local scholarships, presented to 25 outstanding undergraduates from local universities each year.

The Scholarship was established by the Innovation and Technology Commission of the HKSAR Government, HSBC and The Hong Kong Federation of Youth Groups for nurturing young talents in Hong Kong.

Awardees will receive a sum of HK\$150,000 to support them to embark on learning journeys in a variety of sectors. Ms Chau underwent an internship for research related activities in a clinic at Queen Mary Hospital, under the mentorship of Dr Ka-shing Michael Cheung, Clinical Assistant Professor from the Department of Medicine of the University of Hong Kong. Dr Cheung's areas of research interest include gastrointestinal and hepatobiliary oncology, and big data analysis. Ms Chau is planning to join a study exchange programme in the USA and she wish to attend some courses on data science and biological engineering.



Students received awards in video contest

On 8 June, nursing students, *Mr Killian Tang* and *Ms Eunice Mak* were presented with two awards at the PolyU Learning to Learn (L2L) video contest. Eunice Mak's video was selected the Most Useful Video (Silver), and Killian Tang's work won the Most Creative Video (Bronze). The L2L video contest provides a platform for PolyU students and teachers to share their learning experience and help others to become better learners.



Killian Tang (left) and Eunice Mak (right) received their awards from Prof. E Angela Chan.

To view Killian Tang's video: Study Less with Good Habits

<https://www.youtube.com/watch?v=FkeJrQRuApA>

To view Eunice Mak's video: Create a Drag and Drop Calendar and To-do List

https://www.youtube.com/watch?v=aqMv9P_Fcag

- Our PhD student, *Hammoda Abu-Odah* has been selected to receive the Faculty Distinguished Thesis Award for his project titled 'An Exploration of the Factors and Needs Associated with the Development of a Palliative Care Program into the Palestinian Healthcare System from Different Key Stakeholders' Perceptions'.

Alumni



The Alumni Association of Nursing Studies and the PolyU Public Relations and Alumni Activities Sub-committee jointly organised a webinar titled “Post-COVID and Business Opportunities after the Pandemic” on 10 June. Around 200 participants join the webinar. Dr David Kin-ching Ng, Honorary Director of the Hong Kong Registered Chinese Medicine Practitioners Association (1st from left) was the invited speaker for this event.

Current Issues



3 May

Twenty-two colleagues participated in the flag-raising ceremony.

Visitors

5 May

Dr Hon David Lam Tzit-yuen, LegCo member (Medical and Health Services)



4-6 May

Prof. Alex Molasiotis, Head of the School, visited the University College Dublin (UCD) in Ireland to explore the possibilities of student/staff exchange, research collaboration, and developing the network for our new Interdisciplinary Centre for Qualitative Research. UCD is one of the world leading universities and is in the top 50 list for nursing.



In the photo [from left to right]: Dr Deidre O’Donnell, Assistant Professor; Prof. Alex Molasiotis, Head of PolyU’s School of Nursing; Prof. Fiona Timmins, Dean of Nursing and Head of the School; Prof. Martin McNamara, Associate Dean; and Mr Jack Morris, International Programme Manager.

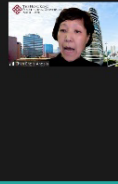


24 Jun

Ms Amanda Pang and Mr Kenneth Wong from Evercare

My journey in healthcare communication research/practice

- ♦ Exploring the issue of **time constraint** in nurse-patient’s interactions within the context of a busy environment (2012-13);
- ♦ **Shift handovers** as important healthcare **communication between nurses** or between doctors (2013-2014; 2016-2017);
- ♦ Nurses’ **perceptions of their speaking up narratives** (2014-15);
- ♦ Patterns of **nurse-patient communication in a nurse-led clinic of cancer patients**

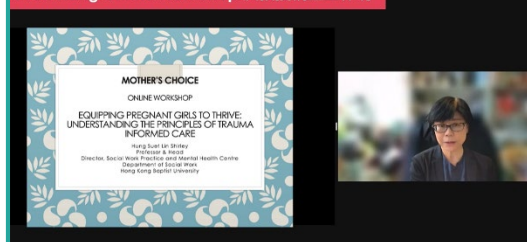


10 May

Prof. E Angela Chan, Associate Head (Undergraduate Education) & Professor, was an invited speaker for the joint online seminar organised by the Department of English and the Communication and International Research Centre for the Advancement of Health Communication. She talked about cancer patients’ perspective of their nurse-patient communication in a busy hospital ward.

Current Issues

Prof. Hung Online Workshop 洪教授網上工作坊



19 May & 6 Jul

Co-organised by the School and Mother's Choice, the Changing Life Stories Online Workshops were held. The workshops aimed to support teenage pregnant girls and promote understanding of the association between childhood trauma and teenage pregnancy. The workshop in May introduce to the participants the principles of trauma-informed care and trauma-informed care skills. In July, the workshop was about sexual health and teenagers.

21 May & 6 Jun

Dr Mak Yim Wah, Associate Professor, was an invited speaker for the 'Together we Think and Walk' online seminar on Parental Support organised by the Jockey Club Early Intervention and Community Support Project for Parents and Christian Family Service Centre. Dr Mak released her research findings on the effectiveness of applying Acceptance and Commitment Therapy on parent support groups.



In June, Dr Lin Yang, Associate Professor, gave a keynote speech at the Shanghai-HK Interdisciplinary Workshop on Social Media Data Analytics. She talked about Hong Kong's experience and lessons in fighting COVID-19.

28 May & 4 Jun

The school organised the Greater Bay Area Symposium: Promoting health in aging and cancer population with nursing innovations. Prof. Alex Molasiotis, Head of the School and Prof. Frances Wong, Chair Professor of Advanced Nursing Practice & Associate Dean (FHSS) gave opening and closing addresses at the symposium, and Prof. Angela Leung, Associate Head in Research and Dr Patrick Kor, Assistant Professor, shared their research findings and views in the plenary session, themed technology and health ageing. The symposium was supported by the Mainland-Hong Kong University Alliances Fund 2021-2022 from the University Grants Committee.



Photo: An open discussion for collaborative research opportunity on day 2 of the symposium.

16 Jul

On the Polyu InnoTech Open Day, the School showcased our patient simulation systems and the new Virtual Hospital system. About 70 participants got simulated experience in our lab.



20-22 Jul

Our Departmental Academic Advisor (DAA), Prof. Patricia Davidson, Vice-Chancellor and President University of Wollongong, Australia (upper photo: lower row, 1st from left) met with Head, Associate Heads, academic staff members and students of the School online to discuss our overall development in the areas of research, teaching and learning, student learning outcomes, and quality assurance, etc.



Lower photo: Our DAA met the student representatives online to collect their views on student learning experience.

25 Jul

The orientation programme for the Master of Science in Nursing was held. An overview of the programme and the subject information were given to around 100 new students.



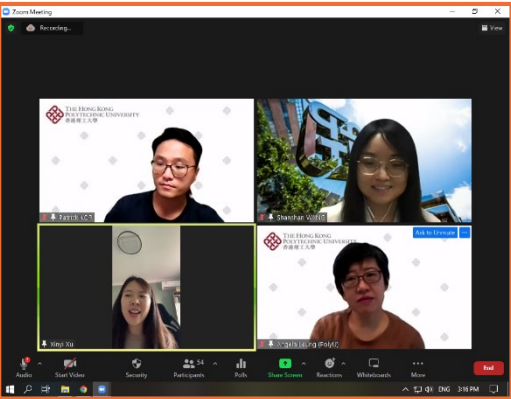
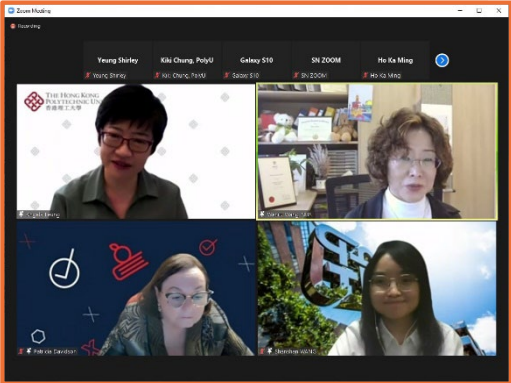
[In the photo] Upper row: Dr Betty Chung (Teaching Fellow), the Deputy Programme Leader; Lower row: Dr Vivian Ngai (Associate Professor), the Programme Leader.

Seminars

20 May

Topic : Moving from pandemic to endemic: proceed with caution
Speaker: Prof. Patricia Davidson, Vice-Chancellor and President
University of Wollongong, Australia
(In the photo: Lower row, 1st from left)

Topic : Development and pilot testing of a Salutogenic theory-
based health resource program to promote healthy
ageing among senior-only households in Singapore
Speaker: Dr Wenru Wang, Associate Professor, Alice Lee Centre for
Nursing Studies, Yong Loo Lin School of Medicine,
National University of Singapore
(In the photo: Upper row, 1st from right)



15 Jul

Topic : Unraveling age-related sensorimotor changes and their
connections with physical and cognitive functioning
Speaker: Dr Yurun Cai, Assistant Professor, School of Nursing,
University of Pittsburg, USA
(In the photo: Lower row, 1st from left)

Topic : Supporting the family caregivers of older people
Speaker: Dr Patrick Kor, Assistant Professor, School of Nursing,
PolyU