

SN NEWSLETTER

"To excel in Nursing for the well-being of mankind"

COVER STORY

Virtual Hospital won Wharton-QS Reimagine Education Regional Award



The School's Virtual Hospital* won the Wharton-QS Reimagine Education Regional Award 2022-Asia Gold. Congratulations! The Wharton-QS Reimagine Education Awards is regarded as the 'Oscars' of Education that brings together educational innovators from all around the world to compete for global honours. Our Virtual Hospital was among the top 18% (out of 1,200 applications from 70 nations) shortlisted for an award. This year's awardees includes the bronze, silver and gold winners in seven regions. Below is the result in our region.

* Team members of the Virtual Hospital: Dr Kitty Chan, Senior Teaching Fellow (Project Leader); Dr Justina Liu, Associate Professor; Dr Kin Cheung, Associate Professor; Mr Timothy Lai, Senior Clinical Associate; and Dr Patrick Kor, Assistant Professor.

Wharton-QS Reimagine Education Regional Awards 2022 (Click on the titles of the projects to view the videos submitted by the applicants for the awards)					
Gold	Asia	Virtual Hospital: An Immersive Virtual Reality System For Nursing Education	Immersive Experiential Learning Award	The Hong Kong Polytechnic University	Hong Kong
Silver		Reimagining Music Learning with e-Orch	Breakthrough Technology Innovation in Education	The Education University of Hong Kong	Hong Kong
Bronze		Safesim Design: Improving Design for Safety (DfS) Competency in Singapore	E-Learning Award	National University of Singapore	Singapore



Eleven SN scholars ranked among world’s top cited scientists



Eleven scholars of the School were named in the database of top-cited scientists (single recent year impact[#]) compiled by Stanford University. They include: **Prof. Alex Molasiotis** and **Prof. Claudia K. Y. Lai**, Honorary Professors; **Prof. Frances Wong**, Chair Professor of Advanced Nursing Practice & Associate Dean (FHSS); **Prof. Alice Yuen Loke**, Professor of Practice; **Prof. Thomas Choi**, Professor; **Dr Doris Y.P. Leung**, **Dr Harry Qin**, **Dr Justina Liu**, and **Dr Lin Yang**, Associate Professors; **Dr Teris Cheung** and **Dr Stefanos Tyrovolas**, Assistant Professors.

Five scholars: Prof. Frances Wong, Prof. Thomas Choi, Dr Stefanos Tyrovolas, Prof. Alex Molasiotis and Prof. Claudia K.Y. Lai were named in the database of top-cited scientists (career long impact^{##})

The ‘Updated science-wide author databases of standardized citation indicators (version 5)’ [Click [here](#) for details] classified scientists into 22 scientific fields and 174 sub-fields. The selection is based on the top 100,000 scientists by c-score (with and without self-citations) or a percentile rank of 2% or above in the sub-field.

[#]Single recent year data pertain to citations received during calendar year 2021. ^{##}career-long citation impact are updated to the end of 2021.

List of our research projects receiving external funding support

Project Title	Principal Investigator	Funding Source	Total Grant (HK\$)
Increasing mental health literacy and peer support among caregivers: an electronic painting and peer supportive (EPPS) platform	Prof. Angela Leung (Professor & Associate Head [Research])	Mental Health Initiatives Funding Scheme Health Bureau	1,976,900
Peer support virtual reality-based intervention for AD/HD carers - stress relieving and empathy improving programme	Dr Harry Qin Associate Professor	Mental Health Initiatives Funding Scheme Health Bureau	1,975,044



CGN received Social Capital Builder Logo Award

The Centre received the Social Capital Builder Logo Award 2022 (社會資本動力標誌獎), in recognition of their contribution to the development of social capital in Hong Kong from 2020 to 2022. The award is organised by the Community Investment and Inclusion Fund.

The assessment criteria are based on 6 core social capital dimensions, namely, social networks, social participation, information and communication, trust and solidarity, mutual-help and reciprocity, and social cohesion and inclusion.



Dr Justina Liu, Director of the CGN, attended the Social Capital Builder Awards Presentation Ceremony on 14 December.

CGN jointly organised Cross-Border Seminar on Care for Older Adults

The Centre jointly organised the 10th Cross-Border Seminar on Care for Older Adults, themed Ageing in Greater Bay Area: Practice – Challenge – Prospect, on 16 December.



Dr Daphne Cheung (1st from right) was a member of the Organising committee of the seminar.

Centre Activities

• **Prof. Angela Leung**, Director of the Centre, [Professor & Associate Head (Research)] and **Dr Ivy Zhao**, Research Assistant Professor, participated in the Fourth Regional Forum of WHO Collaborating Centres in the Western Pacific organised by the World Health Organization Regional Office for the Western Pacific. The forum was held in Cambodia from 28 to 29 November.

Prof. Angela Leung served as a rapporteur in the forum to facilitate members reviewing the advancement of WHO’s visions in the Western Pacific and exploring mechanisms for more effective ways of implementing the visions.



Prof. Angela Leung (1st from left) and Dr Ivy Zhao (1st from right) at the forum.



Prof. Angela Leung facilitated members identifying opportunities to maximise the contribution of WHO CCs in responding to health challenges.

• Prof. Angela Leung, gave an invited lecture on health literacy research and evaluation for the Global Health Literacy Leadership Institute organised by Tufts University, USA, on 1 December.

Certificate course in infectious diseases and infection control

The Center has kick-started the Certificate in Infectious Diseases and Infection Control for Health Care Professionals in January, 2023. This year 63 students are admitted for the part-time course, which is delivered in a face-to-face or an online mode.



RESEARCH THEMES & CENTRES UPDATE

Research Publications

- Abu-Odah, H., Molassiotis, A., & Liu, J. Y. W. (2022). Gathering policymakers' perspectives as an essential step in planning and implementing palliative care services at a national level: an example from a resource-limited country. *BMC Palliative Care*, 21(1), [43]. <https://doi.org/10.1186/s12904-022-00936-1>
- Alzahrani, H., Alshehri, M. A., Alotaibi, M., Alhowimel, A., Alodaibi, F., Alamam, D., Zheng, Y., & Tyrovolas, S. (2022). Burden of musculoskeletal disorders in the gulf cooperation council countries, 1990–2019: Findings from the global burden of disease study 2019. *Frontiers in Medicine*, 9, [855414]. <https://doi.org/10.3389/fmed.2022.855414>
- Bayuo, J., Wong, F. K. Y., Lin, R., Su, J. J., & Abu-Odah, H.. A meta-ethnography of developing and living with post-burn scars. *Journal of Nursing Scholarship*. Advance online publication. <https://doi.org/10.1111/jnu.12811>
- Chen, X-Y., Chan, K. L., Lo, C. K. M., Ho, F. K., Leung, W. C., & Ip, P. (2023). The association between victimization and inflammation: A meta-analysis. *Journal of Affective Disorders*, 323, 108-122. <https://doi.org/10.1016/j.jad.2022.11.063>
- Cheng, H. L., Kwong, E., Chan, K., Lai, C., Xi, X. X., & Lee, P. Preferences for end-of-life care and decision-making among Chinese community-dwelling older adults: A comparative cross-sectional study in Hong Kong and Wuhan in China. *Nursing and Health Sciences*. Advance online publication. <https://doi.org/10.1111/nhs.12990>
- Cheng, H., Yu, X., Li, Y., Jia, Z., Wang, J., Xie, Y. J., Hernandez, J., Wang, H. H. X., Wu, H. Association between METS-IR and Prediabetes or type 2 Diabetes Mellitus among elderly subjects in China: A large-scale population-based study. *International Journal of Environmental Research and Public Health*. 2023; 20(2):1053. <https://www.mdpi.com/1660-4601/20/2/1053>
- Deng, B., Li, Y., Chen, J. Y., Guo, J., Tan, J., Yang, Y., & Liu, N. (2022). Prediction models of vaginal birth after cesarean delivery: A systematic review. *International Journal of Nursing Studies*, 135, [104359]. <https://doi.org/10.1016/j.ijnurstu.2022.104359>
- Eid, M. K., Abu-Odah, H., Wehedi, D. T., Su, J. J., & Abed, Y. (2022). Policymakers' and patients' perspectives on breast cancer management in the Gaza Strip-Palestine: A qualitative study. *European Journal of Oncology Nursing*, 61, [102223]. <https://doi.org/10.1016/j.ejon.2022.102223>
- Ho, L., Xu, Y., Zhang, N. L., Ho, F. F., Wu, I. X. Y., Chen, S., Liu, X., Wong, C. H. L., Ching, J. Y. L., Cheong, P. K., Yeung, W. F., Wu, J. C. Y., & Chung, V. C. H. (2022). Quantification of prevalence, clinical characteristics, co-existence, and geographic variations of traditional Chinese medicine diagnostic patterns via latent tree analysis-based differentiation rules among functional dyspepsia patients. *Chinese Medicine (United Kingdom)*, 17(1), [101]. <https://doi.org/10.1186/s13020-022-00656-x>
- Ho, L., Zhang, N. L., Xu, Y., Ho, F. F., Wu, I. XY., Chen, S., Liu, X., Yeung, W. F., Wu, J. CY., & Chung, V. CH. (2022). Latent tree analysis for the identification and differentiation of evidence-based Traditional Chinese Medicine diagnostic patterns: A primer for clinicians. *Phytomedicine*, 106, [154392]. <https://doi.org/10.1016/j.phymed.2022.154392>
- Huang, E. Y. Z., Cheung, J., Liu, J. Y. W., Kwan, R. Y. C., & Lam, S. C. (2022). Groningen Frailty Indicator–Chinese (GFI-C) for pre-frailty and frailty assessment among older people living in communities: psychometric properties and diagnostic accuracy. *BMC Geriatrics*, 22(1), [788]. <https://doi.org/10.1186/s12877-022-03437-1>
- Kor, P. P. K., Li, M. L., Kwok, D. K. S., Leung, A. Y. M., Lai, D. L. L., & Liu, J. Y. W. (2022). Evaluating the effectiveness of a 6-week hybrid mindfulness-based intervention in reducing the stress among caregivers of patients with dementia during COVID-19 pandemic: protocol of a randomized controlled trial. *BMC psychology*, 10(1), [178]. <https://doi.org/10.1186/s40359-022-00876-8>
- Lau, S. S. S., Shum, E. N. Y., Man, J. O. T., Cheung, E. T. H., Amoah, P. A., Leung, A. Y. M., Dadaczynski, K., & Okan, O. (2022). COVID-19-related health literacy of school leaders in Hong Kong: A Cross-Sectional Study. *International Journal of Environmental Research and Public Health*, 19(19), [12790]. <https://doi.org/10.3390/ijerph191912790>
- Lee, A. Y. L., Wong, K. C., Hung, T. M. T., Yan, J., & Yang, S. (2022). Nurse-led telehealth intervention for rehabilitation (telerehabilitation) among community-dwelling patients with chronic diseases: systematic review and meta-analysis. *Journal of Medical Internet Research*. <https://doi.org/10.2196/40364>
- Liu, Q., Ho, K. Y., Lam, K. K. W., Lam, W. Y. Y., Cheng, H., Ching, S. S. Y., & Wong, F. K. Y. (2022). A descriptive and phenomenological exploration of the spiritual needs of Chinese children hospitalized with cancer. *International Journal of Environmental Research and Public Health*, 19(20), [13217]. <https://doi.org/10.3390/ijerph192013217>
- Liu, Q., Ho, K. Y., Lam, K. K. W., Lam, W., Cheng, E. H. L., Ching, S. S. Y., Belay, G. M., & Wong, F. K. Y. (2022). Adaptation and psychometric evaluation of the Chinese version of the functional assessment of chronic illness therapy spiritual well-being scale among Chinese childhood cancer patients in China. *Frontiers in Psychology*, 13, [1065854]. <https://doi.org/10.3389/fpsyg.2022.1065854>
- Liu, Y., Liu, Y. F., Liu, K. X., Xie, Y. J., Li, W. G., Kong, Y., Zhu, H. H., Zhu, J., Mi, B., Yang, J., Huang, Z., Du, J., He, H., & Shen, Q. (2022). Anxiety, depression and post-traumatic stress disorder and related factors among Chinese population during the COVID-19 pandemic: A cross-sectional study. *Medicine*, 101(51), e32336. <https://doi.org/10.1097/MD.00000000000032336>
- Ma, B., Yang, J., Wong, K. Y., Wong, K. C., Ma, T., Meng, J., Zhao, Y., Wang, Y., & Lu, Q. (2022). Artificial Intelligence in Elderly Healthcare: A Scoping Review. *Ageing Research Reviews*. <https://doi.org/10.1016/j.arr.2022.101808>
- Molassiotis, A., Xie, Y. J., Leung, A. Y. M., Ho, W. K. G., Li, Y., Leung, H. M. P., Wang, H. L., Chen, C. X. R., Tong, D. W. K., Siu, J. Y., & Tak-Fai Lau, J. (2022). A Community-based participatory research approach to developing and testing social and behavioural interventions to reduce the spread of SARS-CoV-2: A protocol for the 'COPAR for COVID' programme of research with five interconnected studies in the Hong Kong context. *International Journal of Environmental Research and Public Health*, 19(20), [13392]. <https://doi.org/10.3390/ijerph192013392>
- Ng, S. M. S., Ho, Y. W., Chan, N. H., Liu, T. W., & So, C. L. (2022). Psychometric properties of the Chinese version of the Oxford Participation and Activities Questionnaire in people with stroke. *International Journal of Environmental Research and Public Health*, 19(23), [15450]. <https://doi.org/10.3390/ijerph192315450>
- Ruan, J., Chen, S., Liang, J., Mak, Y. W., Yee Ho, F. Y., Chung, K. F., Kwun Tong, A. K., Zhang, X. L., & Yeung, W. F. (2022). Acceptance and commitment therapy for insomnia and sleep quality: A systematic review and meta-analysis. *Journal of Contextual Behavioral Science*, 26, 139-155. <https://doi.org/10.1016/j.jcbs.2022.09.002>
- Salihu, D., Wong, E. M. L., Kwan, R. Y. C., Bello, U. M., Chutiyami, M., Leung, A. Y. M., Miller, T., Ibrahim, A. A., Jalo, H. A., & Leung, D. Y. P. (2022). Translation, cross-cultural adaptation, and psychometric properties of the Hausa version of the Insomnia Severity Index among internally displaced persons in Africa. *Sleep Medicine*, 96, 57-63. <https://doi.org/10.1016/j.sleep.2022.03.011>
- Su, J. J., Paguio, J., Baratedi, W. M., Abu-Odah, H., & Batalik, L. (2023). Experience of coronary heart disease patients with a nurse-led eHealth cardiac rehabilitation: Qualitative process evaluation of a randomized controlled trial. *Heart and Lung*, 57, 214-221. <https://doi.org/10.1016/j.hrtlng.2022.10.005>

Research Publications

- Sun, Y., Yu, S., Wang, A., Chan, H. C. K., Ou, A. X., Zhang, D., Xie, Y. J., Fong, S. S. M., & Gao, Y. (2022). Effectiveness of an adapted physical activity intervention on health-related physical fitness in adolescents with intellectual disability: a randomized controlled trial. *Scientific Reports*, 12(1), 1-9. <https://doi.org/10.1038/s41598-022-26024-1>
- Tse, M. M. Y., Ng, S. S. M., Lou, V., Lo, R., Cheung, D. S. K., Lee, P., & Tang, A. S. K. (2022). A dyadic pain management program for community-dwelling older adults with chronic pain: study protocol for a cluster randomized controlled trial. *International Journal of Environmental Research and Public Health*, 19(19), [12186]. <https://doi.org/10.3390/ijerph191912186>
- Wang, S., Molassiotis, A., Guo, C., Leung, I. S. H., & Leung, A. Y. M. Association between social integration and risk of dementia: A systematic review and meta-analysis of longitudinal studies. *Journal of the American Geriatrics Society*. Advance online publication. <https://doi.org/10.1111/jgs.18094>
- Wang, S., Tian, L., Ma, T., Wong, Y. T., Yan, L. J., Gao, Y., Zhang, D., Hui, S. S. C., & Xie, Y. J. (2022). Effectiveness of Tai Chi on blood pressure, stress, fatigue, and sleep quality among Chinese women with episodic migraine: a randomised controlled trial. *Evidence-based Complementary and Alternative Medicine*, 2022, [2089139]. <https://doi.org/10.1155/2022/2089139>
- Wong, E. M. L., Tam, H. L., Leung, A. Y. M., Cheung, A. S. P., Cheung, K. C., & Leung, D. Y. P. (2022). Impacts of educational interventions with support of mobile app versus booklet for patients with hypertension and metabolic syndrome: a secondary data analysis. *International Journal of Environmental Research and Public Health*, 19(19), [12591]. <https://doi.org/10.3390/ijerph191912591>
- Wong, K. C., Wong, K. Y., Bayuo, J., Chow, K. K. S., Wong, S. M., & Lee, A. Y. L. (2022). A randomized controlled trial of an mHealth application with nursing interaction to promote quality of life among community-dwelling older adults. *Frontiers in Psychiatry*, 13, [978416]. <https://doi.org/10.3389/fpsy.2022.978416>
- Woods, M., & Montayre, J. R. G. (2022). Legal dimensions of nursing and midwifery. In *Fundamentals of Nursing & Midwifery: A Person-Centred Approach to Care* (4th ed.). Lippincott Williams and Wilkins.
- Xie, Y. J., Tian, L., Hui, S. S. C., Qin, J., Gao, Y., Zhang, D., Ma, T., Suen, L. K. P., Wang, H. H., Liu, Z., Hao, C., Yang, L., & Loke Yuen, J. T. A. (2022). Efficacy and feasibility of a 12-week Tai Chi training for the prophylaxis of episodic migraine in Hong Kong Chinese women: A randomized controlled trial. *Frontiers in Public Health*, 10, [1000594]. <https://doi.org/10.3389/fpubh.2022.1000594>
- Zhang, D., Xu, Z., Yang, Z., Zhou, W., Cheung, P. M., Lee, E. K-P., Zhong, B., Xu, D., Li, X., Xie, Y. J., Gao, Y., Xiao, S., & Wong, S. Y. S. (2022). Association of meaning in life with preventive healthcare use among Chinese adults: are there age and gender differences? *BMC Public Health*, 22(2308), [2308]. <https://doi.org/10.1186/s12889-022-14699-0>
- Zhao, I. Y., Montayre, J., Leung, A. Y. M., Foster, J., Kong, A., Neville, S., Ludolph, R., Mikton, C., Officer, A., & Molassiotis, A. (2022). Interventions addressing functional abilities of older people in rural and remote areas: a scoping review of available evidence based on WHO functional ability domains. *BMC Geriatrics*, 22 (1), [827]. <https://doi.org/10.1186/s12877-022-03460-2>

Achievements

- A project led by *Dr Daphne Cheung*, (Associate Professor), titled 'A Stand-alone Therapeutic Music-with-Movement Programme for Elderly with Cognitive Impairment' received the Hong Kong ICT Awards 2022: Smart People (Smart Ageing) Silver Award. This is the School's third team awarded the Hong Kong ICT Award. Members of the research team include: Dr Lily Ho, Clinical Associate; Dr Harry Qin, Associate Professor; Mr Robin Kwok, Project Associate. External members: Prof. Ken Ho, Assistant Professor, The Chinese University of Hong Kong; Advisors: Prof. Claudia K.Y. Lai, Honorary Professor; Ir Dr Alan Lam [industrial advisor].

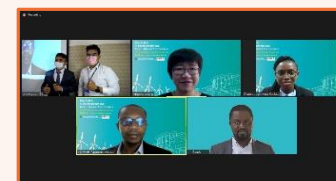
The judges commented that: The programme is user-friendly and a good way to assess the participant's responses in the games. It engage people with dementia in music and games to help them improve their emotions, behaviours and cognitive decline.



Dr Daphne Cheung presented the award winning project at the SocTech Symposium held on 2 December.

- The PolyU President's Awards for Outstanding Achievement 2022 (Services) was given to *Prof. Alex Molassiotis* (team leader), Honorary Professor; *Prof. E Angela Chan*, Professor & Interim Head; *Mr Edmond Tong* & *Mr Timothy Lai*, Senior Clinical Associates; and *Ms Frankie Cheung*, Clinical Associate, in recognition of the School's effort in fighting against the COVID-19 pandemic and establishing HK's first-ever school of nursing's operated pop-up community vaccination centre. The team received the Faculty Award in Services (Team) earlier.
- *Ms Adwoa Owusua Koduah*, our PhD student (Chief supervisor: Prof. Angela Leung, Co-supervisor: Dr Teris Cheung) won the 3-Minute Pitching award (first place) at the 8th Asia Health Literacy Association (AHLA) International Conference, held in Taipei on 27-29 October. The 3-Minute Pitching is a competition for young researchers. The title of her presentation was 'Help-Seeking Behavior: Dementia Literacy Alone May Not Be Enough'.

Led by Prof. Angela Leung (an invited speaker of the session), Ms Koduah and Dr Salihu Dauda, a Postdoctoral Fellow (has left the School since October 2022) had a valuable opportunity to present their research findings at the Special Interest session titled 'Health literacy during and beyond pandemics' of the AHLA International Conference.



Ms Adwoa Owusua Koduah (upper row, 1st from right) and Prof. Angela Leung (upper row, 2nd from right) and Dr Salihu Dauda (lower row, 1st from right) at the AHLA International Conference.

Appointments

- *Dr Grace Xie*, Assistant Professor, has been appointed as Special Topic Editor for the *Frontiers in Psychiatry Healthcare* (topic: Long-term Well-being and Mental Health in a Public Health Emergency), and *Healthcare* (topic: Health Education and Promotion in the Community).
- *Dr Jed Montayre*, Associate Professor, has been appointed Co-Chair, International Council of Nurses-Global Nursing Leadership Institute Network; and Guest Editor for *Caring for Older People, Collegian*, Special Issue December 2022.
- *Dr Daphne Cheung*, Associate Professor, has been appointed External Examiner for Hong Kong Adventist College, Special Topic Editors for *Frontiers in Psychiatry* (topic: Use of Technology in Dementia Care), *International Journal of Environmental Research and Public Health* (topic: Innovative Interventions for People with Dementia); and Fellow of the Hong Kong Academy of Nursing.
- *Dr Arkers Wong*, Assistant Professor, has been appointed Vice Chair / Vice President for the Pi Iota At-Large Chapter, Sigma.

Alumni News

- The Alumni Association of Nursing Studies held the annual general meeting and enjoyed a buffet dinner on 12 December.



- Congratulations to our alumni, *Mr Kai-tai Wong*, who was promoted to Senior Superintendent of Correctional Services Department (CSD) in November 2021. Mr Wong is a graduate of our BSc (Hons) in Nursing programme in 2003. He joined the CSD as an officer in 2005 and worked in various hospitals in correctional institutions. He is currently Head of the Health Care Section, who oversees the provision of health care in correctional institutions.



Current Issues



28 & 29 Oct

Dr Anthony Tong, a clinical psychologist, conducted a seminar titled 'Understanding Acceptance and Commitment Therapy on Stress Reduction' for more than 50 nursing students..

End of Oct to Nov

Dr Lin Yang, Associate Professor, was an invited speaker for the Annual Meeting of the Infectious Disease Management Committee of the Guangdong Province Hospital Association [廣東省醫院協會傳染病管理專業委員會年會] (topic: Hong Kong's experience in fighting COVID-19 pandemic). She also gave a seminar in the Workshop for Nursing Responses and Organisational Management of Public Health Emergencies in the Greater Bay Area (topic: SARS-CoV-2 variants and research development in prevention/treatment).

Dr Arkers Wong, Assistant Professor, was invited speakers for Sichuan University, Mainland China (topic: Utilising technologies to improve patient journey), and Hong Kong Association of Family Medicine and Primary Health Care Nurses (topic: Applying information and communication technology in nursing and healthcare practice in Hong Kong).

Sep to Nov

A group of PolyU students on the Service-Learning subject Collaborative Care in School Health and Safety used Temi-robot to promote balanced lifestyles and school safety in a school health event of Tai Po Sam Yuk Secondary School organised for the school children, parents, and teachers.



Photo 1

Seven nursing students received the School's Community Care Scholarship to develop the Temi-robot assisted fall prevention programme for the ageing population. Twelve senior citizens from Health-in-Action participated in this new initiative. The findings of the project were presented at the 9th International Conference on Health Sciences, held in Yogyakarta, Indonesia, from 25 to 26 October.



Photo 2

Photo 2: Temi-robot acted as a communication aid and mobile kiosk for stimulating learning interest and promoting health information. Photo 3: A group of nursing students tested the effectiveness of Temi-robot (in the circle) assisted fall prevention programme.



Photo 3

Current Issues

2-5 Nov

The School's two innovations: the Blended Gaming COVID-19 Training System (BGCTS) and the social robots (developed by NEC Hong Kong [NECHK] in collaboration with the School) were showcased in the Gerontech and Innovation Expo cum Summit, the largest gerontechnology public education event in Hong Kong.



Photo 1



Photo 2

Photo 1: Prof. Angela Leung and Ms Elsa Wong, NECHK's Managing Director, introduced the social robots to the public. Photo 2: BGCTS aims to enhance the infection control knowledge among healthcare workers at local residential care homes.

13 Nov

Dr Patrick Kor, Assistant Professor, was interviewed in the RTHK radio one programme "Care for Disabled" (非常人物生活雜誌) in which he talked about his research findings on multi-sensory cognitive stimulation activities for older people with dementia. Click [here](#) to listen to the episode on 13/11/2022-五感寶盒



非常人物生活雜誌



Photo 1

17 Nov

The 28th Congregation (Faculty of Health and Social Sciences) was held. 486 nursing students completed their studies at all levels. Dr Hammoda Abu-odah, Dr Robbie Wang and Dr Parial Laurence Lloyd Bundalian were awarded the Faculty Distinguished Thesis Award. Congratulations!

Photo 2: Dr Robbie Wang (2nd from right) and Dr Hammoda Abu-odah (3rd from left).



Photo 2

25 Nov

Guests of the Faculty of Health and Social Sciences and the School enjoyed the PolyU 85th Anniversary Celebration Dinner with our staff members.



26 Nov

The inauguration ceremony of the Guangdong-Hong Kong-Macao University Nursing Alliance was held (Photo 1). The alliance was jointly established by Sun Yat-Sen University, Kiang Wu Nursing College of Macao, and PolyU, with aims to strengthen academic/research exchanges and sharing of educational resources among the three universities.

Earlier on 12 November, the alliance hosted an pre-inauguration event, the Young Scholars Forum.

Photo 2: Prof. E Angela Chan, Professor & Interim Head, officiated the Young Scholars Forum as a Guest of Honour. Photo 3: Prof. Frances Wong, Chair Professor of Advanced Nursing Practice & Associate Dean (FHSS) was one of the keynote speakers for the Young Scholars Forum.



Photo 1



Photo 2



Photo 3

28 Nov

The School organised the Introduction to Clinical Simulation Seminar for our clinical staff and clinical partners. Prof. Hing-yu So, President of the Hong Kong College of Anaesthesiologists and Educationist and Educationist of the Innovative Learning Centre for Medicine, was invited to share his experience in debriefing. Prof. Adam Montagu from the Adelaide Health Simulation gave an eye-opening talk on how a world class centre was developed for learning and teaching of health care professionals.





Current Issues

Nov



Led by Dr Arkers Wong, Assistant Professor, and Dr Lily Ho, Clinical Associate, 220 students on the BSc (Hons) in Nursing programme participated in the interprofessional education and collaborative practice event, themed COVID-19 pandemic infection control and management, held in the University of Hong Kong. Our students had a valuable opportunity to work together with the students from other disciplines, including Chinese medicine, engineering, law, Bachelor of Medicine-Bachelor of Surgery, pharmacy, speech & hearing sciences, and social work to design care plans for patients with COVID-19.

9 Dec

Dr Justina Liu, Associate Professor, gave a keynote speech on the School's Virtual Hospital for the Social Innovation Regional Forum, organised by the PolyU Jockey Club Design Institute for Social Innovation (JCDISI).



The forum was watched by 341 persons via the JCDISI website and WeChat live streams and attracted close to 100,000 views on the Mainland Chinese streaming platform ifeng.com.

26 Dec



Dr Justina Liu and Mr Timothy Lai, Senior Clinical Associate, were interviewed in the TVB's programme Vital Lifeline (最強生命線). They talked about the School's Virtual Hospital. Click [here](#) to watch the episode (starting from 09:35)



7 Jan 2023



Photo 1



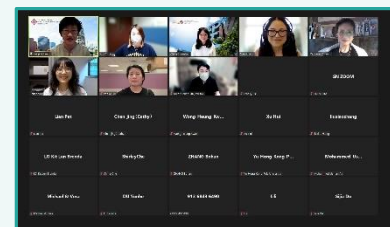
Photo 2

PolyU Info Day for Taught Postgraduate Programmes was held.

Photo 1: Dr Martin Christensen, Associate Head (Postgraduate Education) & Associate Professor [photo: mid]; Dr Vivian Ngai, the programme leader (Associate Professor) [photo:1st from right], and Dr Betty Chung, Deputy Programme Leader (Teaching Fellow) [photo:1st from left], introduced the the MSc in Nursing programme to the prospective students. Photo 2: Dr Patrick Kor, Programme Leader (Assistant Professor), and Dr Tommy Hung, Deputy Programme Leader (Clinical Associate) introduced the Master of Nursing programme to the participants of the information seminar.

Seminars

18 Nov



Topic: Grandparenting and later life mental and cognitive outcomes: A cross-country comparison study

Speaker: Dr Nan Zhang, Senior Lecturer (Associate Professor) in Medical Sociology and Social Gerontology, Department of Social Statistics, Manchester Institute of Collaborative Research on Ageing (MICRA), Global Network for Ageing Research on China (GNARC), University of Manchester, UK

Topic: What can be learnt from Hong Kong near-centenarians and centenarians? Comparison of "successful agers" between 2011 and 2021/22

Speaker: Dr Karen Cheung, Fellow, The Sau Po Centre on Ageing, The University of Hong Kong; Director, Mindlink Research Centre



HAPPY CHINESE NEW YEAR

