



SN NEWSLETTER

July 2025
Issue No: 65

To excel in Nursing for
the well-being of mankind



THE HONG KONG
POLYTECHNIC UNIVERSITY
香港理工大學

護理學院
SCHOOL of
NURSING

Head calls for Nursing to be recognised as a STEM Discipline at ICN Congress

At the 2025 International Council of Nurses (ICN) Congress, Prof. Janelle Yorke* (Head of the School), one of the distinguished speakers, called for Nursing to be recognised as a STEM (Science, Technology, Engineering, and Mathematics) discipline. Her appeal coincided with the unveiling of the [ICN new global definition of nursing](#) that strongly emphasises the scientific foundation of the profession.

The congress, held in June, gathered 7,000 nurses from around the world in Helsinki. Prof. Yorke, the first nursing researcher in Hong Kong who has been awarded the Global STEM Professorship, urged the profession to assert themselves as scientists performing evidence-informed practice in technologically advanced healthcare environments. In a compelling address to thousands of nursing professionals, Prof. Yorke shared her experience in leading the development and implementation of electronic Patient Reported Outcome Measures (e-PROMs) into routine oncology clinical care to highlight the crucial role nurses play in healthcare advancements and demonstrate STEM is in nurses every day practice.

This year, a 34-strong SN delegation participated in the congress. Our academic staff members and students actively contributed by presenting their research, moderating concurrent sessions, and promoting our programmes at the exhibition booth. Among our 15 student participants, primarily postgraduates, were two outstanding undergraduate students, who were sponsored to attend the congress and had the opportunity to present their project 'The Integration of Artificial Intelligence in Nursing Education: Student Engagement and Clinical Reasoning Cycle' on an international platform—an inspiring milestone in their academic journey.

'This transformative experience reaffirmed the significance of our project and our vision for advancing techno-integrated nursing education. We are motivated to continue to apply innovative technology to extend the boundaries of healthcare service.'

Ms Eunice Mak & Ms Alena Mok
General nursing undergraduates

1 Prof. Janelle Yorke addressing ICN congress.

2 Prof. Yorke led a 34-strong delegation to attend the ICN congress.

3 Our exhibition booth attracted diverse audience.

4 Prof. Angela Leung, Associate Head (Research) & Professor, moderated a concurrent session themed Potential of AI In Nursing.

5 Ms Eunice Mak (1st from left) & Ms Alena Mok (1st from right), debuted their work at the congress. Photographed alongside our students is the CEO of ICN, Mr Howard Catton.

*Full title: Angel S.P. Chan Lau Professor in Health and Longevity, Chair Professor of Nursing, Head, School of Nursing.



TEACHING & LEARNING

This summer, our nursing students on exchange explored the world to experience new cultures/lifestyles and gain new healthcare perspectives.



A group of students exchanged to **La Source University** enjoying the natural beauty of Switzerland.

'Through engaging with the local communities and embracing cultural sensitivity, we have learnt the importance of respecting the autonomy and dignity of older people, and the value of compassionate and holistic care.'

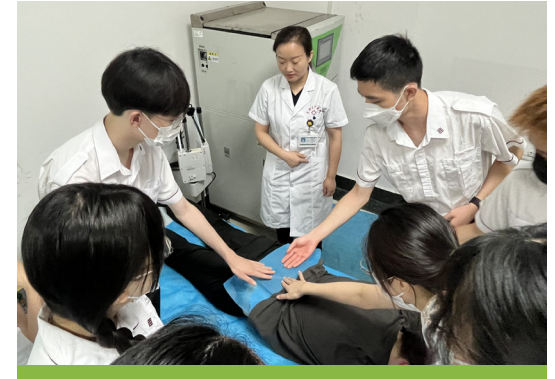


The students on placement at **West China Hospital, Sichuan University** got a unique opportunity to learn in an operating theatre.

'I'm very glad to have had an opportunity to visit and learn at West China Hospital. The placement has increased my understanding of the differences between the healthcare systems in Mainland China and Hong Kong.'

Ms Lung Sin Yiu

Year-2 student
BSc in Nursing programme



At a Traditional Chinese Medicine unit of **Fourth Affiliated Hospital, Xinjiang Medical University**, Mainland China, our students are experiencing the application of heat therapy to specific acupuncture points on the body to help the flow of qi and blood.



The students on placement at the **Department of Geriatrics of Zhongnan Hospital of Wuhan University** learnt how to use digital tools for performing nursing assessments and managing chronic conditions for older patients with complex medical needs.

TEACHING AND LEARNING

TEACHING & LEARNING

In July, the School welcomed 80 incoming exchange students from 20 partner institutions, including six newly partnered universities from Mainland China and overseas. The exchange activities have deepened the students' understanding of the Hong Kong healthcare system and our innovative teaching approaches.



The exchange students participated in ice-breaking activities to interact and form new friendship.



The students experienced the School's Virtual Hospital.

'Virtual Hospital integrates advanced technology and collaborative learning. It is an effective system for improving knowledge and problem-solving abilities in nursing education. The realistic and engaging simulated clinical scenarios generated by Virtual Hospital were totally impressive.'

Muhammad Rayhan

Universitas Muhammadiyah Surakarta
Indonesia



The students visited Hong Kong Sanatorium & Hospital School of Nursing to learn more about the nursing training provided by a private hospital.

'The school has excellent facilities and resources. The visit allowed us to reflect on nursing training across different environments and recognise the key elements that contribute to delivering high-quality care.'

Wang Weilong

Xinjiang Medical University
Mainland China



Dr Sukki Ho, Associate Professor of Practice, gave a lecture on Clinical Reasoning in AI Nursing to the students.

TEACHING & LEARNING

Service-learning in Thailand

In collaboration with universities in Thailand (including Mahidol University and Thammasat), a series of service-learning projects were carried out in Thailand, from June to July, under the supervision of our academic colleagues.

Prof. Patrick Kor, Associate Professor, led 20 students taking the subject *Healthy Lifestyle Challenges for Developing Communities* to conduct health assessments and cognitive intervention activities in the nursing homes and communities. Dr Kin Cheung, Associate Professor of Practice, and Dr Elaine Cheung, Assistant Professor of Practice, supervised PolyU students delivering workforce health promotion for the health care workers at two nursing homes alongside 20 local students. The meaningful service-learning journeys deepened our students' understanding of global aging, community health practices and health of nursing home workers in Thailand.



Enhancing students' readiness for placements

From March to May, a series of workshops/seminars were organised to help prepare year-2 general nursing students undergoing clinical placements. Through self-reported psychological evaluation, exchanging of best student support strategies, and identification of student stressors, effective strategies have been developed by the clinical colleagues to address the students' stress and enhance their resilience.

- 1 & 2 Led by Prof. Kor, the students conducting health assessments and cognitive interventions in the nursing homes and communities.
- 3 The students conducted health assessments for the health care workers.
- 4 Staff member of the Student Affairs Office (Right) shared the best student support strategies to our clinical colleagues.
- 5 Students had an opportunity to practise in a simulated clinical environment to improve their skills and build confidence prior to placements.

Head appointed FHSS-CTU Director

Prof. Janelle Yorke has been appointed Director of the new Clinical Trials Unit (CTU) of the Faculty of Health and Social Sciences (FHSS). Members of the unit included Prof. Grace Xie, Prof. Jerry Yeung, Associate Professors; and Prof. Li Yan, Assistant Professor (Presidential Young Scholar). The [unit](#) was established to provide training and consultation for the faculty members in support of their research on non-pharmacological interventions and multidisciplinary care models.

Motivating healthcare innovation through research mentorship

The School actively engaged in the PolyU Junior Research Mentoring Programme and the Faculty Summer Research Studentship, held from March to August, to foster early research exposure among high-achieving secondary school students and cultivate a passion for creating healthcare innovation through research among aspiring nurses.

[Photo 1] The secondary school students contributed to a project on AI-based augmented reality system for hand hygiene training, which is led by Prof. Yang Lin, Associate Professor. **[Photo 2]** Ms Tsui Nok-yi (mid) was among the four nursing undergraduates awarded the Faculty Summer Research Studentship. She participated in a mobile health project led by Prof. Arkers Wong, Associate Professor, and gained hands-on experience during a nurse consultation session at a District Health Centre.

'INSPPRING' prospective students to pursue a PhD

[Photo 3] Eighteen pre-PhD candidates from countries/places including Mainland China, Ghana, and the State of Palestine, joined the International Nursing Scholarship for Pre-PhD in Research Excellence (INSPPIRE) programme from 14 to 18 July.

Our faculty introduced the strength of the School's PhD programme to the participants and the participants got opportunities to present their preliminary research ideas and receive feedback from our scholars. Since the inception of INSPPIRE in 2013, 18 participants has chosen PolyU and completed their PhD programmes.



Fifteen projects secured over 17 mil from GRF/ ECS/ HMRF

We are proud to announce that EIGHT research projects from our School were awarded the Health and Medical Research Fund (HMRF) [including one project was awarded the HMRF-Research Fellowship Scheme] from the Health Bureau and SIX research projects have been awarded the General Research Fund (GRF) and Early Career Scheme (ECS) from the Research Grants Council (RGC).

In addition, a project led by Dr Wong Ka-po, our newly appointed Research Assistant Professor, has been successfully transferred from the Department of Applied Social Sciences (APSS) to our School. With this addition, the total GRF/ECS/HMRF funding secured by our School has reached an impressive over \$ 17 million! CONGRATS to all the Principal Investigators (PIs) and research teams for their remarkable achievements!

List of funded projects

Projects awarded HMRF	PI	Total Grant (HK\$)
Effectiveness of a tele-group cognitive behavioural family intervention (tgCBFI) for people with schizophrenia and their families: A mixed-method study	Dr Dennis Ma Assistant Professor of Practice	1,500,000
An implementation science approach to evaluating self-administered acupressure for knee osteoarthritis in older-aged adults in the community	Prof. Jerry Yeung Associate Professor	1,499,989
Migraine features and silent brain infarction in predicting stroke risk progression: A cohort study with neuroimaging analysis in Hong Kong Chinese women	Prof. Grace Xie Associate Professor	1,499,907
Nurse parental support using a proactive mobile app in symptom management for children with medical complexity requiring mechanical ventilation: an effectiveness-implementation hybrid 2 study	Prof. Winsome Lam Assistant Professor	1,496,336
Dyadic management intervention in older people with co-occurring cognitive impairment and diabetes as a supplementary approach to chronic diseases self-management program: a hybrid effectiveness-implementation study	Prof. Jed Montayre Associate Head (Strategy) & Associate Professor	1,345,318
HMRF-Research Fellowship Scheme Increasing physical activity with a social robot-assisted exercise intervention in older adults with hearing loss: a feasibility and pilot randomized controlled trial	Prof. Ivy Zhao Assistant Professor	935,973
A personalized interactive patient empowerment artificial intelligence platform (PIPE-AI) Enhanced by DiabetesGPT in prediabetes and diabetes patients in primary healthcare settings	Prof. YANG Lin Associate Professor	500,000

Projects awarded HMRF	PI	Total Grant (HK\$)
Effects of creative arts therapy on body image, self-esteem, anxiety and depression in men with prostate cancer after active treatment: a feasibility randomised controlled trial	Dr Hammada ABU-ODAH Research Assistant Professor	498,400

Projects receiving GRF/ ECS		
Telephone-coached sleep bibliotherapy for informal caregivers of people with dementia: A randomized controlled trial	Prof. Shanshan Wang Assistant Professor	1,369,716
Investigation of the effectiveness of virtual reality (VR) hypnosis in improving poor sleep among Chinese childhood cancer survivors: A mixed methods randomized controlled trial	Prof. Eva Ho Ka-yan* Associate Professor	1,360,284
A theory-based sleep hygiene education for insomnia disorder - a non-inferiority randomized controlled trial with mixed-method process evaluation and cost-effectiveness analysis	Prof. Jerry Yeung	1,244,512
Enhancing social skills in children with attention deficit hyperactivity disorder through immersive gamified virtual reality-based training: a mixed methods study	Dr Wong Ka Po Research Assistant Professor	1,203,390
Effects of a salutogenic strength-based social robot-assisted intervention on the depressive symptoms and sense of coherence of family caregivers of persons with dementia	Prof. Ivy Zhao	1,074,540
Making better decisions for long-term healthcare – conceptualizing financial health literacy (FHL) from laypeople's perspectives and formulating an instrument for FHL	Prof. Angela Leung Associate Head (Research) & Professor	1,066,000
Interactive virtual environments for transcanal endoscopic ear surgery training, planning and rehearsal via advanced vision-language models	Prof. Harry Qin Professor	640,916

Other externally funded research projects			
A course development and feasibility study of Chinese medicine sleep health preservation for insomnia (建構及先導試驗以中醫睡眠養生課程緩解失眠)	Chinese Medicine Development Fund - Industry Support Programme (B2)	Prof. Jerry Yeung	1,388,140
A scoping review on ways to improve health span and longevity	AIA International Limited (Collaborative)	Prof. Angela Leung	300,000

Internally funded research project			
Investigating dissociation in the general population of Hong Kong: Prevalence, trajectories, and predictors	Start-up Fund for RAPs under the Strategic Hiring Scheme	Dr Andy Fung Research Assistant Professor	299,914

* Full title: Kuok Group Young Scholar in Child and Adolescent Health Associate Professor.

WHO Collaborating Centre for Community Health Services

Healthy Ageing Conference returned with new ICOPE video premiere

The Healthy Ageing Conference made its much-anticipated return on 29–30 May, building on the success of its inaugural event two years ago.

In collaboration with the Research Institute for Smart Ageing, the School's WHO Collaborating Centre for Community Health Services (WHO CC for Community Health Services) hosted the conference that brought together over 200 experts around the world to exchange knowledge under the theme Progressing the Healthy Ageing Agenda.

Guests of Honour, Ms Xinjie Qi, Second Class Counsel (Deputy Director-General Level) of the Department of Ageing and Health, National Health Commission, Mainland China; Dr Libby Lee, the Acting Secretary for Health, the Government of HKSAR; Dr Hiromasa Okayasu, Director of the Division of Healthy Environments and Populations at the WHO Western Pacific Regional Office, and Prof. Jin-Guang Teng, President of PolyU, officiated the event with welcoming speeches.

A highlight of the opening ceremony was the premiere of [a new training video on the Integrated Care for Older People \(ICOPE\)](#), aligning with the recent release of the [2nd edition of the WHO ICOPE Handbook](#).

The video, produced by the School's WHO CC for Community Health Services, promoted adoption of the new ICOPE and showcased practical applications of ICOPE's care model, emphasising early identification of declines in intrinsic capacity and integrated interventions to support healthy ageing.

'The inclusion of early identification of social support needs and carers' needs, urinary incontinence management, and vaccination advocacy in the 2nd edition of ICOPE enhances the assessment for loss of intrinsic capacity among older adults and identify needs for support and intervention,' said Prof. Angela Leung, Director of the WHO CC for Community Health Services.



The conference featured 20 speakers. Keynote speakers included: Prof. Adrian Hayter, Member of WHO Clinical Consortium on Healthy Ageing; GP Runnymede Medical Practice, Medical Director for Clinical Policy, Royal College of General Practitioners, UK; Dr Tony HA, Assistant Commissioner for Primary Healthcare, Primary Healthcare Commission; and Prof. Bei WU, Dean's Professor in Global Health, Vice Dean for Research, Rory Meyers College of Nursing, New York University, USA.

1 From left: Dr Hiromasa Okayasu (6th), Ms Xinjie Qi (7th), Dr Libby Lee (8th), Prof. Jin-Guang Teng (9th).

2 New ICOPE video premiered at the opening ceremony.

PhD RESEARCH SHOWCASE

Squima International Centre for Infection Control

Showcasing Innovations to advance infection control

Led by Prof. Yang Lin, Director of the Centre, and Dr Ko Ka-Yan, Deputy Director, members of the Centre proudly showcased their cutting-edge innovations at the Hospital Authority Convention **[photo 1]** in May and the exhibition booth from 30 May to 1 June at the 9th International Infection Control Conference **[photo 2]**. Highlights included the AI-based Augmented Reality Hand Hygiene Training and Auditing System. The innovations demonstrated the Centre's commitment to advancing infection control through technology and engagement.



Phd Research Showcase

Developing new CHIME-WST model for recovery of socially withdrawn youth

The hikikomori lifestyle is a phenomenon of extreme social withdrawal among youth. Despite its growing prevalence, there remains a lack of standardised treatment pathways or comprehensive understanding of the recovery process.

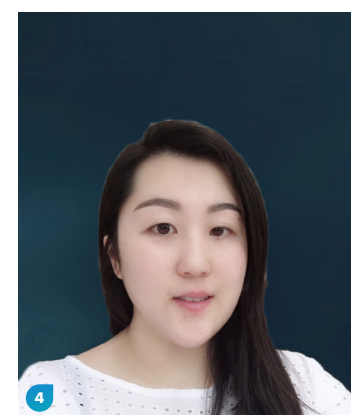
In her PhD research, Ms Jolene Yung, our PhD student[#], (Chief Supervisor: Prof. Eva Ho, *Kuok Group Young Scholar in Child and Adolescent Health* Associate Professor) has addressed this critical gap by exploring the recovery journey of hikikomori individuals through a qualitative study grounded in the CHIME framework^{##} (Connectedness, Hope & Optimism, Identity, Meaning in life, and Empowerment).

Jolene recruited hikikomori participants from five local NGOs and interviewed these youth, their social workers and family members. A hybrid reflexive thematic analysis was conducted, which resulted in her proposal of a newly modified model-CHIME-WST-which incorporates three additional dimensions: Work of Self (W), Spatiality (S) and Time (T).

As many hikikomori are entrapped in the lifestyle for long periods of time and are homebound, spatiality and time are component identified specific to hikikomori reengagement.

Jolene study identified critical facilitators for recovery, including rebuilding a positive sense of self, fostering motivation, regaining personal responsibility and adjusting space and time factors. It also uncovered barriers such as lack of social support, past trauma, negative thinking, procrastination, environmental intolerance, inappropriate support offered at inappropriate time.

Jolene's modified CHIME-WST model is tailored to the unique challenges faced by socially withdrawn youth and has addressed their psychosocial recovery needs. It offers a comprehensive understanding of the recovery process and an evidence-based framework for practitioners and researchers to guide interventions and support strategies to aid the recovery of hikikomori. Her innovative CHIME-WST model is poised to influence future policy, clinical practice, and community-based interventions.



³ Social withdrawal behaviours are increasingly prevalent among youth.

Photo by Dave Goudreau on Unsplash.

⁴ Ms Jolene Yung.

[#]Co-Supervisor: Prof. Victor Wong, Hong Kong Baptist University.

^{##}Click [here](#) to view Jolene's systematic review on the applicability of the CHIME framework to hikikomori recovery. The work was published in *BMC Psychology* (2021).

OUR PEOPLE



Prof. Shanshan Wang, Assistant Professor, received the Emerging Nurse Researcher/Scholar Award at the 36th International Nursing Research Congress of the Sigma Theta Tau International Honor Society of Nursing (Sigma), held in Seattle, the USA, in July. The award recognises early career nurse researchers and scholars whose research or scholarship has influenced the nursing profession and the people it serves. She is a fourth SN scholar to have been awarded this honour.

In the photo: Prof. Wang (4th from right) proudly represented the strength of Asian nursing as she received this prestigious honour at Sigma's International Congress.

Dr Winnie Ng, Lecturer, received the Poster Presentation Award at the 2025 International Conference – Reimagining Transfer: Global Insights on Credit Mobility in the New Higher Education Paradigm co-organised by Higher Education institutes.



Prof. Angela Leung, was awarded the Medical & Health Trailblazer (醫療與健康開拓者) of the Smart Ageing Award 2025, presented by Golden Age Foundation, in recognition of her contribution in implementing innovative solutions to enhance elderly health management and commitment in promoting smart health technologies to improve seniors' quality of life. Earlier in May, she was awarded the Grand Award (Research and Publication Category) in Greater Bay Area Urban Design Awards 2024, which was presented by the Hong Kong Institute of Urban Design.

From left: (1st) Mr Timothy Ma, Advisor of WHO CC for Community Health Services; (2nd) Dr Laura Lo, PolyU Associate Vice President; (3rd) Dr Carmen Ng, Social and Elderly Wellness Director of Hong Kong Housing Society; (4th) Prof. Angela Leung; (5th) Dr Roy C P Chung, Governing Committee of the PolyU Foundation at the Smart Ageing Award presentation ceremony.



Ms Janice Li Jia-ying, our PhD student (Supervisors: Prof. Li Yan, Prof. Janelle Yorke, and Prof. E Angela Chan, Adjunct Professor), received the Best Presentation Award for her work titled 'Chatbot-delivered interventions for improving mental health among young people: A systematic review and meta-analysis' at the 3rd PolyU Research Student Conference.



Prof. Janelle Yorke, has been appointed Adjunct Distinguished Professor of Nursing at the Peking University Institute for Global Health and Development for a term of three years.



Prof. Mak Yim-wah, Associate Professor, was appointed Lead Consultant by the Hong Kong Hospital Authority who is responsible for overseeing the Acceptance and Commitment Therapy Post-registration Certificate Course in Psychiatric Rehabilitation Nursing.



Dr Andy Fung, Research Assistant Professor, was appointed Guest Editor (from February to August) for *Frontiers in Psychiatry* (Journal Impact factor 3.2 in 2024); and Editor for *PLOS ONE* (Journal Impact factor 2.6 in 2024).

ACHIEVEMENTS

EVENT HIGHLIGHTS



2 May

The School's held an appreciation ceremony to express thankfulness to our clinical partners for their coordinating work in the provision of venues for fulfilling the demands of students' clinical practicum; and developing our students' competence. Forty-eight clinical partners, presenting hospitals, community organisations and governmental departments attended the event.



3 & 12 May

Prof. Janelle York, together with our colleagues joined our partners at Princess Margaret Hospital to celebrate the International Day of the Midwife.



A mini concert was organised on PolyU's campus to honor the contributions of nurses to global health on the International Nurses Day.

16 May

Prof. Janelle Yorke and Dr Kin Cheung, Co-Chairperson of the conference organising committee, kicked off the Higher Education Paradigm Transfer Pathways Conference 2025 at the opening ceremony. The School co-organised the event.



24 May

Around 100 prospective students attended the School's consultation and student sharing sessions on the PolyU JUPAS Consultation Day to obtain more information on our undergraduate programmes.



28 May

Prof. Stephen Neville, Discipline Lead, Nursing, School of Health, University of the Sunshine Coast, Australia, delivered a seminar on Editor's Tips on Writing Impactful Papers.



May-June

Faculty members were interviewed on local media. [Listen to RTHK's radio programmes [1](#) & [2](#)] Prof. Justina Liu, Associate Head (Education) & Professor, spoke about how the School is leveraging advance technologies to enhance cognitive/motor training for older adults.

Prof. Jed Montayre, Associate Head (Strategy) & Associate Professor, gained international recognition as he was one of the 10 finalists bidding for the prestigious 2025 Aster Guardians Global Nursing Award. In the [\[SCMP interview\]](#), he spoke about healthy ageing and strategies to prevent social frailty in older adults.



Dr Tommy Hung, Assistant Professor of Practice, and our year-5 general nursing undergraduate student, Ms Eunice Mak, were featured in a [\[Viu TV\]](#) programme speaking on the challenges of nursing profession.

Dr Cheung Kin, was interviewed on [\[HOY TV\]](#) speaking on the Caritas project, which promotes occupational health awareness through health assessments and social engagement activities for cleaning workers.



Over 80 PolyU's nursing students, together with students from post-secondary and tertiary education institutes, completed the anti-drug adventure-based training led by Prof. Katherine Lam, Assistant Professor. Some trained students delivered anti-drug activities in secondary schools.

EVENT HIGHLIGHTS

EVENT HIGHLIGHTS



May-Jul

Our faculty members continued to shape the future of nursing through influential speaking engagements.

At the Hospital Authority Convention, Prof. Janelle Yorke, a distinguished speaker, was invited to provide two presentations. She spoke about her experience in ePROM Implementation in Oncology Care and the multiple dimensions of the dyspnea sensation.



Prof. Li Yan delivered a keynote on technology-empowered mental health care to an audience of over 300 mental health nurses at the Guangdong Annual Mental Health Nursing Forum.



Dr. Dennis Ma, Assistant Professor of Practice, was a symposium speaker for the Community Psychiatric Forum at the 2025 HKCPsych International Mental Health Congress. He spoke about community mental health and psychiatric services and the needs of adults with mental health conditions in Hong Kong.



Prof. Frances Wong (Chair Professor of Advanced Nursing Practice & Director of Joint Research Centre for Primary Healthcare) an invited speaker, shared her experience on Promoting Healthy Lifestyle Using Multi-Faceted Approaches and the Associated Outcomes at the Jockey Club We WATCH Healthy Lifestyle Project - International Conference on Healthy Lifestyle.



Jun-Jul

Secondary school students from Band 1 schools attended the NursingWork Workshop, which was organised in collaboration with the FDMT Consulting. The workshop aimed to attract admission of high-calibre students to the School and their joining of the Global Nursing Leader Distinction Programme.



Secondary school students joined the PolyU Summer Institute and experienced the School's innovative lab teaching session.



12 Jul

Our alumni and their families visited the Fire and Ambulance Services Academy to learn more about emergency response and pre-hospital care.



31 Jul

The School held the Research Away Day to identify strategies to advance our research and innovation initiatives. Prof. Karen Luker, Emeritus Professor of Nursing, University of Manchester, was invited to provide feedback to our colleagues following the day's discussions.



Networking

The School's delegation [including Prof. Janelle York, Prof. Yang Lin, Prof. Eva Ho, Prof. Grace Xie, Prof. Li Yan, Mao Ting (a joint PhD student)] visited the Schools of Nursing of Peking University, Capital Medical University, and Peking Union Medical College. Memorandums of Understanding (MoUs) were signed with these three schools for furthering our collaboration in educational, research, and exchange activities.



[Lower photo] An MoU was signed between the School and the School of Nursing, Peking University.



Visitors

Ms Caroline Key (1st from left), Senior Lecturer in Nursing & Ms Heather Baglee (1st from right), Course Director for the BSc Occupational Therapy and MSc Occupational Therapy programmes, School of Health, Leeds Beckett University, UK.

An MoU to establish partnership was signed between the School and Leeds Beckett's School of Health.