

Capacity Building Scheme for Secondary School Teachers

Promoting Meaningful Social Engagement for Young People through Service-Learning

A project funded by Keswick Foundation and Chow Tai Fook Charity Foundation

June 30, 2022



Mission

To Learn and To Apply, for the Benefit of Mankind

Vision

- To pursue impactful research that **benefits the world**.
- To nurture critical thinkers, effective communicators, innovative problem solvers and **socially responsible global citizens**.



Service-Learning at PolyU

- Integrate **community service with academic study**
(Experiential learning pedagogy)
- **Apply academic knowledge** to address **genuine community needs**
- Utilise **reflection** to facilitate students' **academic, civic, social, moral and personal development**



PolyU has been requiring all undergraduate students to complete an academic service-learning subject since 2012.



Service-Learning at PolyU

*“One of world’s most impressive and impactful SL initiatives in higher education”
- Andrew Furco, World renowned Service-Learning expert*

- 01 **1st university** in Hong Kong making SL a **graduation requirement**
- 02 **The largest scale in HK and Asia** —
Over 4500 undergraduate students taking SL per year
- 03 **Strong networks** in Hong Kong and overseas —
over 80 NGOs, over 50 schools and other partners
- 04 Led a joint-university team with **15M grant from UGC**, for **capacity building** in SL in HK higher education institutions

- 05 **Local and international recognitions** for excellence in SL and leadership education:

- 2 **UGC Teaching Awards**
- 4 **QS Reimagine Education Awards**
(1 Gold, 2 Silver and 1 Bronze)
- 1 **Times Higher Education Awards Asia**



Prof. Daniel Shek

Associate Vice President
(Undergraduate Programme)
Li & Fung Professor in Service
Leadership Education
Chair Professor of Department of
Applied Social Sciences



Dr. Grace Ngai

Head of Service-
Learning and
Leadership Office
Associate Professor
of Department of
Computing

Service-Learning under COVID-19

Online and face-to-face services :

1853 students



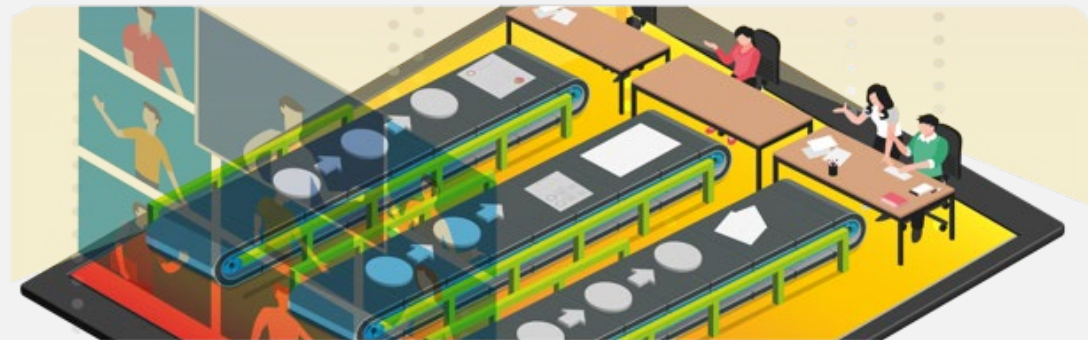
Desktop research and face-to-face services :

446 students



Online service:

4442 students



In 2020/21 ...



4,508

Undergraduate Students Enrolled
in Service-Learning



69

Service-Learning
Subject-offerings



180,320

Service hours

Accumulated

28,961 (Since 2012)
students

Accumulated

1,158,440 (Since 2012)
service hours (132 person-years)

SL

Hong Kong:
3,687 students

Chinese Mainland &
Taiwan:
536 students

Overseas:
285 students



Number of
Service-Learning
Subjects:



Faculty
of Health
and Social
Sciences



Faculty of
Engineering



Faculty of
Humanities



Faculty of
Applied
Science and
Textiles



Faculty of
Construction
and
Environment



School of
Hotel and
Tourism
Management

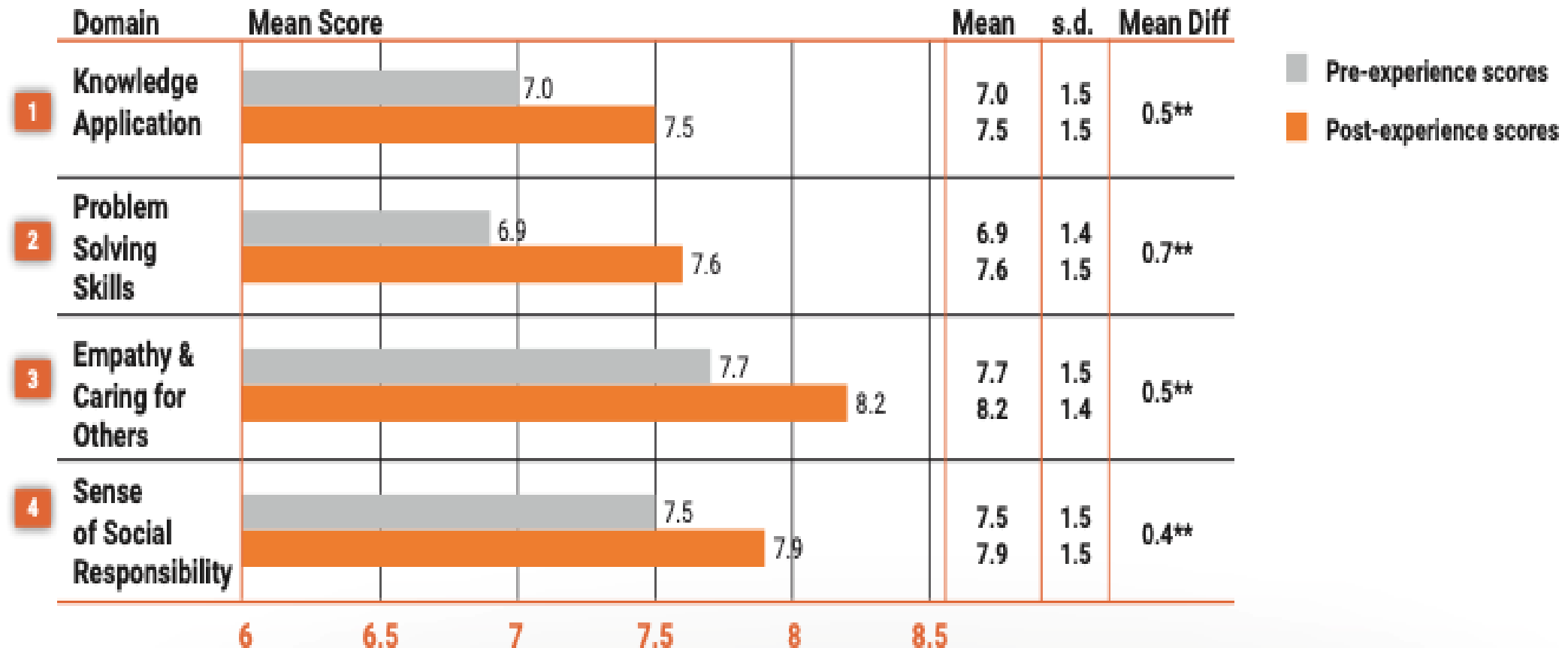


Faculty of
Business



School of
Design

Students Learning Outcomes



Key: 10-pt Likert scale: 1=Strongly Disagree 10=Strongly Agree

N=1820 and **sig at .01 level

Challenges of the Hong Kong education system



- **Missing link** between knowledge taught in schools and real-life
- Overly **exam-oriented**
- Widespread **youth disillusionment**
- Erosion of **societal cohesion**



- Care about society
- Potential and creativity

How can service-learning help?

- Inspire **learning interests** from working in real-life setting
- Work with the underprivileged to promote **better understanding of our society**
- Apply **academic knowledge** to address **genuine community needs**
- Analyse **social issues objectively** to reduce supposition
- Develop **empathy and other generic skills**, e.g. collaboration, communication, problem-solving, creativity, etc.



Service-Learning is very popular **from kindergartens to universities** in the West

Capacity Building Scheme for Secondary School Teachers



周大福慈善基金
Chow Tai Fook Charity Foundation



凱瑟克基金
Keswick Foundation Limited

This three-year project is supported by a generous donation from **Chow Tai Fook Charity Foundation** and **Keswick Foundation**.

Aim

Teachers are the key to quality education.

Through equipping teachers with essential attitudes, knowledge and skills, we ultimately promote meaningful social engagement for young people and enhance their academic learning.

Objectives

- Develop teachers' confidence, attitude, knowledge and practical skills on SL
- Build a community of practice (CoP) in SL education in secondary education
- Build a comprehensive SL e-library
- Promote responsible and empathetic citizenship development in secondary education through “train-the-trainer” approach

Project Period

January 2022 - June 2025

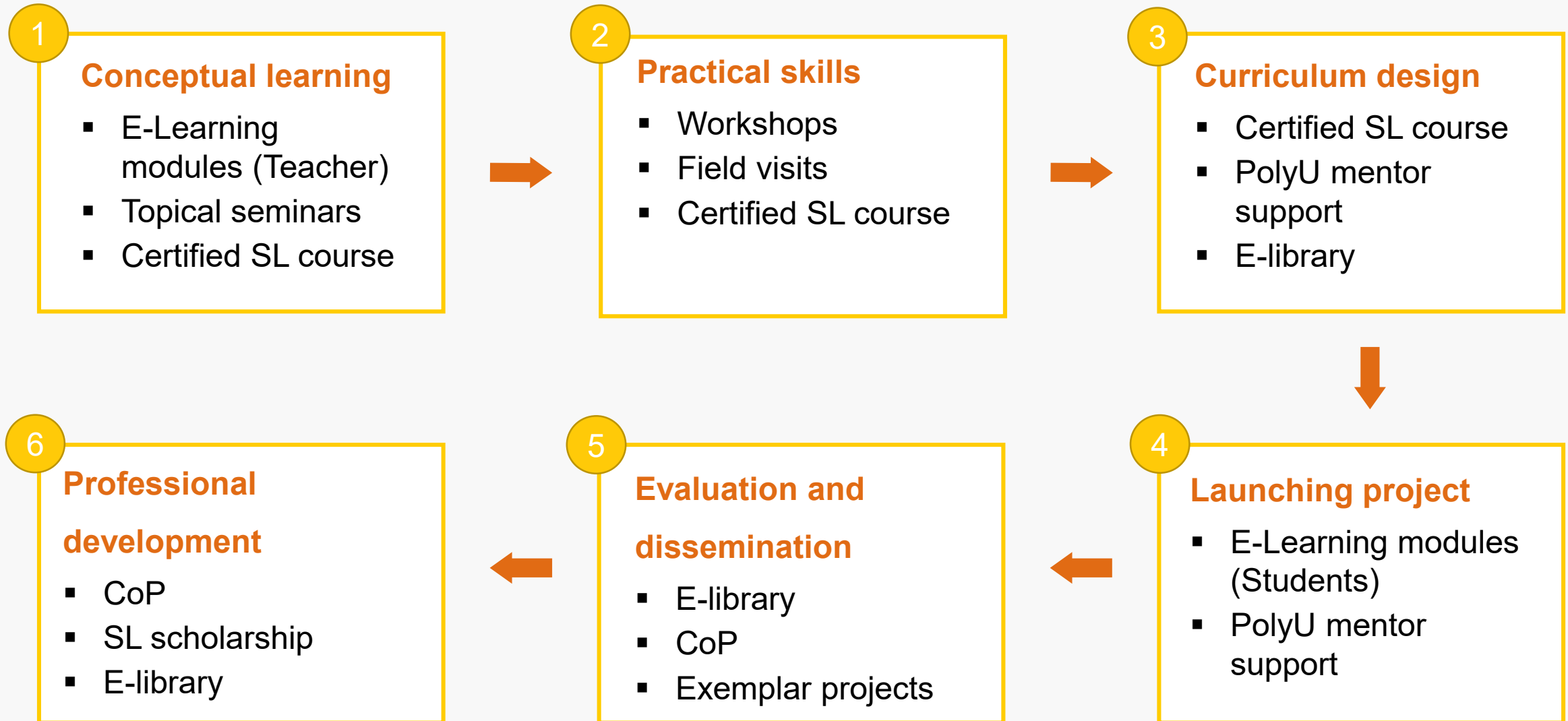
Service Region

Hong Kong

Target Groups

- **Secondary schools**
 - Secondary schools which are keen on developing / furthering SL for their students
- **Teachers**
 - Priority to panel heads and teachers from major subjects, e.g. Chinese, English, Mathematics, Science, Integrated Humanities, Citizenship and Social Development
 - School social workers, teaching assistants, and allied professionals tasked with duties related to teaching and/or coordinating service-related programmes

Comprehensive Training and Support



Project components

1 Professional development

- Self-paced modules
- Certification course

2 Community of Practice (CoP)

3 E-library

4 SL scholarships

Project components

1 Professional development

- Self-paced modules
- Certification course

2 Community of Practice (CoP)

3 E-library

4 SL scholarships

Professional development

Flexible self-directed learning

Online e-learning module

*Interactive online
conceptual learning*

- 15 hours
- Bilingual versions
available

Topical seminars and workshops

*Evidence-based theories
and hands-on experience
sharing*

- SL practical skills
- Youth development
- Community engagement,
etc

SL project field visits

*Acquire practical skills through
observations and practices*

Local field visit

- Half day or Full day
- Free of charge

Offshore field visit

- 5-6 days
- Subsidies available

Can be counted towards EDB-required Continuing Professional Development hours

SL educator certification course

Core training

15 hours
e-learning
module



Introduce SL:

- Theories and fundamentals
- Implementation skills
- Facilitating reflection
- Assessing students in SL

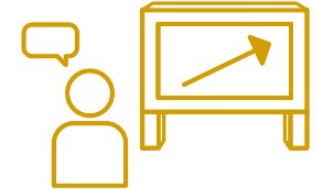
20 hours
core courses



- Project field visit
- Case studies, group discussion, presentation, etc.
- Experience sharing with SL educators



20 hours
elective
courses



- Face-to-face or online thematic talks, seminars, sharing sessions, workshops, and local or non-local field visits.



Counts for 55 Continuing Professional Development hours

Develop SL projects

- PolyU Mentor support

SL educator certification course

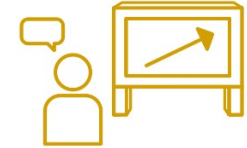
20 hours Core training



- Theories
- Project design
- Risk management and data privacy
- Reflection
- Assessment and evaluation
- Experience sharing
- Field visit



20 hours Elective training



- Thematic workshops on different types of service recipients, e.g. elderly, youth, homeless, ethnic minorities, etc.
- Specific project design workshop, e.g. STEM education, health education and promotion, story-telling and interview, advocacy and community-based research, etc.
- Data privacy
- Local or offshore field visit

Counts for Continuing Professional Development hours

Project components

1 Professional development

- Self-paced modules
- Certification course

2 Community of Practice (CoP)

3 E-library

4 SL scholarships

Community of Practice (CoP-SLSS)

Regular meeting for collective learning

- Promote continuous professional development
- Exchange knowledge and experience
- Facilitate cross-school and cross-sector collaborations



Awards for Outstanding SL Programmes

- Once a year in 2023 - 2025
- Gold: **HKD\$10,000**
- Silver: **HKD\$8,000**
- Bronze: **HKD\$5,000**



Project components

1 Professional development

- Self-paced modules
- Certification course

2 Community of Practice (CoP)

3 E-library

4 SL scholarships

E-library

Support continuous development of impactful SL

E-learning modules for students

- 3 hours
- Basic principles, concepts and practice skills
- Bilingual versions available



Educational kits and assessment tools

- Lesson plans
- Exemplar projects
- Assessment and evaluation tools
- Online and other resources, etc.



Continual research sharing

- Regular research updates
- Assist teachers to improve continuously

Project components

1 Professional development

- Self-paced modules
- Certification course

2 Community of Practice (CoP)

3 E-library

4 SL scholarships

SL scholarships

Encourage continuous professional development

Subsidizing teachers to :

- Attend international SL conferences
- Enroll in SL professional development course or citizenship education

\$5,000-10,000

Each teacher is eligible once during the scheme



Sustainable development

SLLO, PolyU will continue to support teachers' professional development

- The e-learning modules and e-library will be kept open for access
- Advisor to the CoP-SLSS
- Open profession development programmes for CoP members
- Collaborate with secondary schools in local and offshore SL projects
- Secondary school specific sessions at PolyU International Conference

Timeline



	Q1 (Jan - Mar)	Q2 (Apr - Jun)	Q3 (Jul - Sep)	Q4 (Oct - Dec)
2022		Recruit secondary schools		Launch e-learning module for teachers >>>
				Phase 1 SL cert course: Theory
				Seminars, workshops, field visits
				Set up CoP >>>
				Launch e-library >>>
2023	Launch e-learning module for students >>>			
	Phase 1 SL cert course: Practice			
			Phase 2 SL cert course: Theory >>>	
	Seminars, workshops, field visits >>>			
	CoP regular meetings >>>	Awards for Outstanding programmes 2023		
2024	Enriching e-library >>>			
	Phase 2 SL cert course: Practice >>>			
	Seminars, workshops, field visits >>>			
	CoP regular meetings >>>	Awards for Outstanding programmes 2024		
	Enriching e-library >>>			
2025	Awards for Outstanding programmes 2024	Conclude experience		

Mode of participation

Key Schools

- Commit to integrating SL into their school curriculum in 5 years.
- Nominate at least 5 teachers for the “SL educator certification course” and support these teachers to implement SL programmes in school.
- Key schools will be invited to send their students to participate in PolyU’s SL projects, covering STEM, language, adolescent development and service leadership, etc.

Associated Schools

- Encourage their teachers to attend the SL professional development programmes.
- Nominate at least 1 teacher for the “SL educator certification course” and support the teacher to develop an SL programme in school.

Examples of academic SL projects in secondary schools

Language

- Apply language skills to write **life stories** for disadvantaged groups in their community. Present products through social media to promote community development and integration.

Mathematics

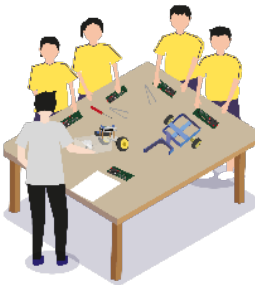
- Develop interesting math games for children with special needs to arouse their interest in learning math or linking math with their daily lives. Organise a **Math game day** for primary school students and their parents.

Citizenship and Social Development

- Develop a **community tour for children**. Investigate the district's population, features, history, hot issues, etc. Integrate findings into a community tour to enhance recipients' understanding of the district.

Information and Communication Technology

- Apply IT literacy to **teach the elderly some practical IT skills**, e.g., online shopping, information searching, social media, internet security, fact-checking, etc.



Registration

- Fill in the letter of interest and email the signed copy to sllo.hk@polyu.edu.hk, or filling in the online form: <https://forms.office.com/r/YQzJPbspBz> no later than **August 31, 2022**

- Results will be announced in October, 2022

Enquiry: alison.ip@polyu.edu.hk / (852) 3400 2993



Thank you