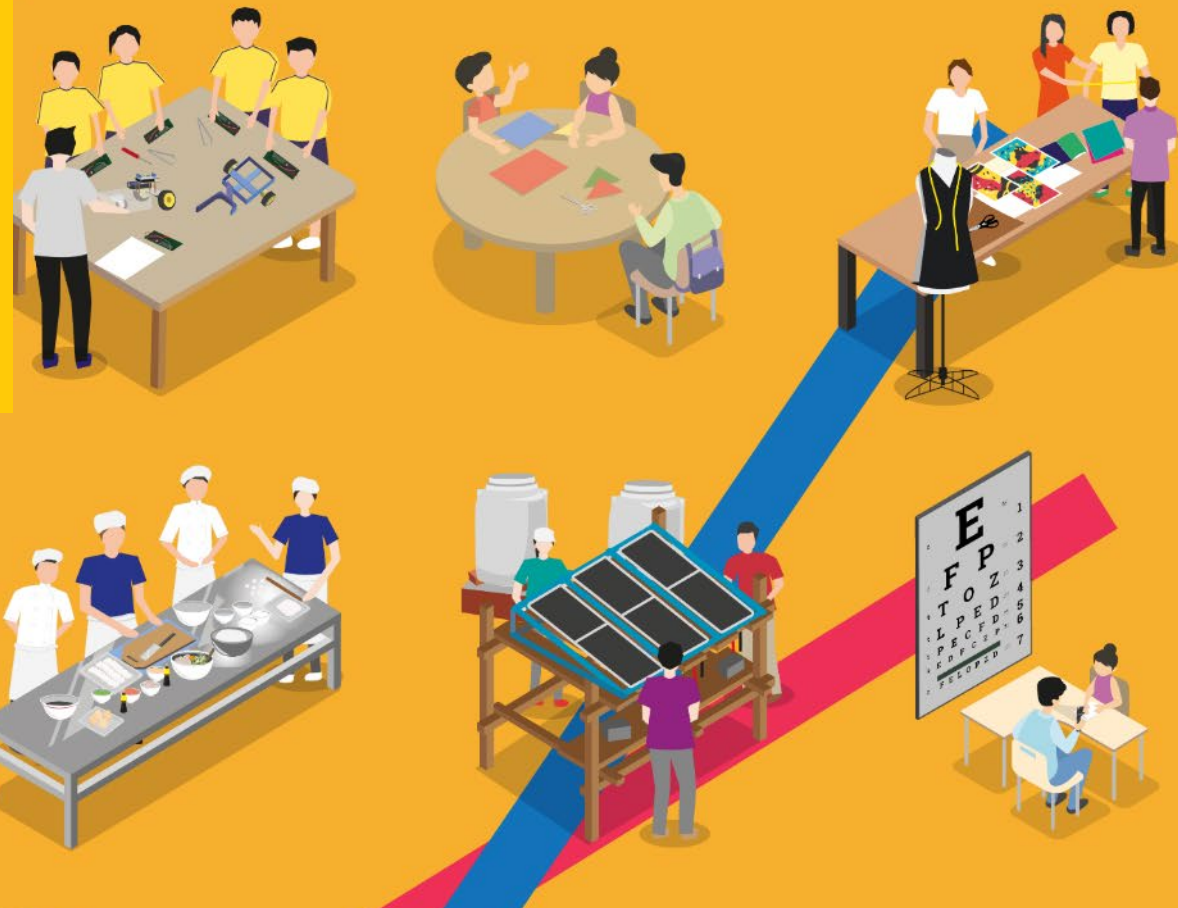


Capacity Building Scheme for Secondary School Teachers

Community of Practice
Session 1: Orientation

September 22, 2022



THE HONG KONG
POLYTECHNIC UNIVERSITY
香港理工大學



SERVICE-LEARNING
AND LEADERSHIP OFFICE
服務學習及領導才能發展處



SERVICE-LEARNING
Capacity Building Scheme for
Secondary School Teachers
中學教師服務學習培訓計劃

Funded by



周大福慈善基金
Chow Tai Fook Charity Foundation



凱瑟克基金
Keswick Foundation Limited

Agenda



01

Welcome



02

**Certificate
course and
scholarships**



03

**Students'
participation**



04

**Baseline
research**



Our members thus far (meet each other!)



53 schools, including

12 Key schools

31 Associated schools

We were originally planning for ~15 schools! 3

What do you expect to get from this capacity building scheme?

Share your view!

1. Scan the QR code
Or
Go to pollev.com
Enter [sllopolyu661](https://pollev.com/sllopolyu661)
2. Put your response in the textbox and submit



Flexible arrangement

- Certificate course will be offered in **2022/23, 2023/24, or 2024/25**
- Teachers can join in **any year** within the project period
- E-learning modules, workshops and trainings, field visit **welcome all staffs** to join from participating schools
- **Priority** will be given to staffs joining the **certificate course**

SL educator certification course

Core training

15 hours
e-learning
module



Introduce SL:

- Theories and fundamentals
- Implementation skills
- Facilitating reflection
- Assessing students in SL

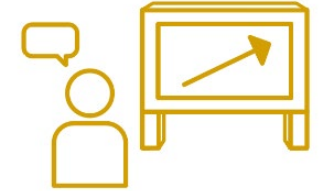
20 hours
core courses



- Project field visit
- Case studies, group discussion, presentation, etc.
- Experience sharing with SL educators



20 hours
elective
courses



- Face-to-face or online thematic talks, seminars, sharing sessions, workshops, and local or non-local field visits.



Counts for 55 Continuing Professional Development hours

Develop SL projects

- PolyU Mentor support

e-learning module for teachers

English version: **October 2022**
Chinese version: **December 2022**

 KEEP Course (similar to )

Welcome all teachers to
join the e-learning module

Service-Learning at Secondary School: Pedagogy and Practice



Education and Teaching
Teacher Development

Manage course



Course Details

Reviews

Instructor(s): Ka Yan IP, Dr. Grace NGAI

Institution: The Hong Kong Polytechnic University

Provider: KEEP Open edX

Unit 1.0

[Bookmark this page](#)

Unit 1

What is Service-Learning?

Introduction

Welcome to the first unit of the "Service-Learning Pedagogy and Practice" online course for secondary school teachers.

You may wonder what service-learning means. Let's start with voluntary services you are familiar with. Some of you may have encouraged or led your students to do voluntary work or community services in the past, such as:

*tutoring children from underprivileged families.

Core training

**2 Face-to-face training sessions
at PolyU**

2022/23

Fall semester



**9:30 am
– 5:30 pm**



**1 Local field visit
(online / face-to-face)**

First field visit: Nov / Dec (TBC)

**Spring semester
TBC**

Elective training

Mostly online training sessions

CoP sessions (Starting from the next session)
Sharing from schools and community partners
Workshops and seminars

International service-learning conference **16-20 November 2022**

Data privacy workshop by PCDP at **4:00pm, 7 December 2022**

Please let us know which topics you would like to have!

Which area(s) you would like us to cover more?

Share your view!

1. Scan the QR code
Or
Go to pollev.com
Enter [sllopolyu661](https://pollev.com/sllopolyu661)
2. Put your response in the
textbox and submit



Overseas field visit

10 Days Rwanda Field Visit

Tentative dates: within mid-July to first week of August, 2023

Quota: max 20 teachers and students

Cost: ~HKD25,000

(Scholarship can support HKD5,000-10,000 per teaching staff)

(we will talk more about students' participation later in this session)

Registration for this year's certificate course

Registration link:

<https://forms.office.com/r/nAswrDPzry>

By Oct 31, 2022

All all teachers and staff involved in service-learning are welcomed!



Scholarship for professional development

Eligibility

- Teachers and staff from participating schools

Priority will be given to:

- Teachers or staff members from key schools
- First-time applicants

Use of Funding

- Attend international conference to disseminate School's SL programme(s)
- Enroll well-recognised service-learning or citizenship education professional development short course
- Join service-learning field trip
- Run pilot small scale secondary school service-learning project

Grant limit

- Max. \$10,000 for each successful applicant

Link: <https://www.polyu.edu.hk/sllo/cbss/en/community-of-practice/scholarship-for-professional-development/>

Application deadline: November 18, 2022

Students participating in PolyU service-learning

Rwanda project

Same as teachers' field visit

- Green energy solution
- Teacher-to-students ratio: 1:2
- Total teachers and students: 20

Mainland China project (TBC)

- Youth and adolescent development
- July 2023
- Pending on status of quarantine requirement

Vision screening project

- Summer 2023
- Quota 20 students

Vision screening and need assessment for app development project

- Summer 2023
- Quota: 20 students

We will announce more opportunities in due course

Call for application starts in December 2022

Survey on Teachers' Perception and Readiness towards Service-Learning

To understand more about service-learning in secondary school

Target: All teachers from your school

Time needed: ~ 30 mins

Reward: \$50 supermarket coupon

Deadline: Oct 31, 2022

Link: <https://bit.ly/3Av8yq4>



Survey administration

1. Each school will receive a deck of vouchers



The voucher features logos for The Hong Kong Polytechnic University, SLLO (Service-Learning and Leadership Office), the Capacity Building Scheme for Secondary School Teachers, the Chow Tai Fook Charity Foundation, and Keswick Foundation Limited. The main text reads: 'The Hong Kong Polytechnic University Capacity Building Scheme for Secondary School Teachers: Promoting Meaningful Social Engagement for Young People through Service-Learning'. It includes a QR code, a survey link (https://bit.ly/3Av8yq4), a deadline of 31-10-2022, and a reward of a \$50 supermarket voucher. A unique participant code 'POLYU001' is circled in red. A 'THANK YOU' message is in a speech bubble. Contact information for SLLO is provided at the bottom.

THE HONG KONG POLYTECHNIC UNIVERSITY 香港理工大學

SLLO SERVICE-LEARNING AND LEADERSHIP OFFICE 服務學習及領導才能發展處

SERVICE-LEARNING Capacity Building Scheme for Secondary School Teachers 中學教師服務學習培訓計劃

周大福 周大福慈善基金 Chow Tai Fook Charity Foundation

KF 凱基克基金 Keswick Foundation Limited

The Hong Kong Polytechnic University

Capacity Building Scheme for Secondary School Teachers:
Promoting Meaningful Social Engagement for Young People through Service-Learning

Survey on Teachers' Perception and Readiness towards Service-Learning

<https://bit.ly/3Av8yq4>

Deadline
31-10-2022

Complete survey to get a **\$50** supermarket voucher

THANK YOU

SLLO.info@polyu.edu.hk @ServiceLearningPolyU
2766 4376 <https://www.polyu.edu.hk/sllo/cbss/>

2. Each voucher will have a unique "participant code"

Survey administration

3. Each teacher can take one voucher and with a specific code



| School Name: | POLYU | Completed survey (Y/N) | Coupon collection date | Signature |
|------------------|----------------|------------------------|------------------------|-----------|
| Participant code | Teacher's name | | | |
| POLYU001 | | | | |
| POLYU002 | | | | |
| POLYU003 | | | | |
| POLYU004 | | | | |
| POLYU005 | | | | |
| POLYU006 | | | | |
| POLYU007 | | | | |
| POLYU008 | | | | |
| POLYU009 | | | | |
| POLYU010 | | | | |

4. PolyU can only identify who has completed the survey by the participant code.

We will not know the teachers' name.

Survey administration

5. Before the end of December, PolyU will let the school know whom have completed the survey and send out the list of participant codes who have completed the survey, together with the supermarket voucher for distribution.



| Participant code | Teacher's name | Completed survey (Y/N) | Coupon collection date | Signature |
|------------------|----------------|------------------------|------------------------|-----------|
| POLYU001 | AAA | Y | | |
| POLYU002 | BBB | | | |
| POLYU003 | CCC | Y | | |
| POLYU004 | DDD | | | |
| POLYU005 | EEE | | | |
| POLYU006 | FFF | Y | | |
| POLYU007 | | | | |
| POLYU008 | | | | |
| POLYU009 | | | | |
| POLYU010 | | | | |

Completed:
POLYU001
POLYU003
POLYU006

Thank you

Q & A