

Partnership with Employers

The Careers and Placement Section, Student Affairs Office (CPS, SAO) is happy to assist employers in connecting with our students and identifying right candidates to match the job requirements during the internship and/or graduate recruitment processes.

CPS, SAO would also collaborate with employers at an early stage in determining job / internship requirements. Employers are welcome to publicise available job/internship opportunities in Hong Kong, Mainland China, or overseas through PolyU Job Board.

About PolyU

PolyU has established a fine repute as the pioneer and leader in application-oriented education and research in Hong Kong. More than 480,000 graduates have been nurtured since 1937 and many of them have become movers and shakers in their industries or professions, making significant contributions to the advancement of society. With a total of six Faculties and three Schools, PolyU has close to 30,000 undergraduate and postgraduate (TPG, MPhil and PhD) students. The Faculties and Schools are as follows:

- Faculty of Business
- Faculty of Construction and Environment
- Faculty of Engineering
- Faculty of Health and Social Sciences
- Faculty of Humanities
- Faculty of Science
- School of Design
- School of Fashion and Textiles
- School of Hotel and Tourism Management

PolyU is Hong Kong's competent provider of comprehensive programmes in fashion and textiles; logistics and maritime; environmental engineering, sustainable development, land surveying and geo-informatics; air transport, aviation and transportation systems; mental health nursing, occupational therapy, optometry, physiotherapy and radiography; and design. Programme structures are flexible and can be taken as Double-Degree options and Major / Minor combinations.



Contact CPS, SAO

- 📍 Reception counter at
QT308, Chow Yei Ching Building
The Hong Kong Polytechnic University
Hung Hum, Kowloon, Hong Kong
- ☎ Tel: (852) 3400 3850 Fax: (852) 2448 9600
- ✉ career.cps@polyu.edu.hk
- 🌐 <https://www.polyu.edu.hk/sao/cps/employers>

Faculty of Science

of The Hong Kong Polytechnic University



Faculty of Science

The Faculty of Science (FS) of The Hong Kong Polytechnic University (PolyU) has three Departments that offer a comprehensive range of academic programmes, covering postgraduate and undergraduate degrees as well as higher diplomas by full-time and part-time modes of study, with a view to offering quality programmes which are application-oriented within a holistic education context, thereby preparing students to serve the industries. The three Departments are the Department of Applied Biology and Chemical Technology, Department of Applied Mathematics, and Department of Applied Physics.

FS has fostered a dynamic research culture. The achievements in research encompass breakthroughs that gained international recognitions, with credit to its dedicated research teams. Its research efforts are underpinned by state-of-the-art facilities including one State Key Laboratory, four University Research Facilities, and seven Research Institutes / Centres.

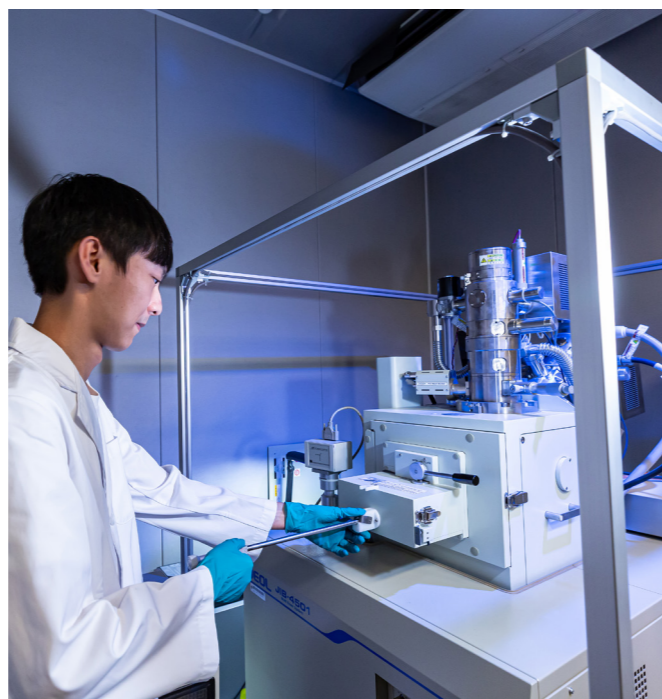
Department of Applied Biology and Chemical Technology

The Department of Applied Biology and Chemical Technology (ABCT) is multidisciplinary in that it embraces chemistry, biology, biochemistry and food science.

Through a range of undergraduate and higher diploma programmes, ABCT is committed to equipping students with professional competency and maintaining a strong partnership with the business, industry and professional sectors.

In the past decade, ABCT's expertise in pharmaceutical chemistry and drug development has been recognised by the University Grants Committee through the "Area of Excellence" scheme in the field of molecular technology for drug discovery and synthesis. Its research facilities in the Shenzhen Hi-Tech Industrial Park have also been recognised by the Ministry of Science and Technology as a "State Key Lab Incubation Base in Chinese Medicine".

- PhD, MPhil, and MSc
- BSc (Hons) Scheme in Biotechnology, Food Safety and Chemical Technology
- BSc (Hons) in Analytical Sciences for Testing and Certification



Department of Applied Mathematics

The mission of the Department of Applied Mathematics (AMA) is to facilitate learning through excellent teaching and research with leading expertise in optimisation, optimal control, computational mathematics, applied statistics and actuarial science, financial mathematics, and engineering mathematics. It is AMA's aim to equip students with sound mathematical, analytical, and communication skills for different employment opportunities. In 2018, PolyU is listed the world's top 100 in the subjects of Mathematics as well as Statistics and Operational Research by the QS World University Rankings, and the 52nd Best Global Universities for Mathematics by the U.S. News & World Report.

- PhD, MPhil, and MSc
- BSc (Hons) Scheme in Data Science



Department of Applied Physics

Established in 1987, the Department of Applied Physics (AP) has experienced rapid growth to be a world-class centre for research and education in applied physics. The Department's graduates have been serving the society in key positions and have made a significant contribution to the development of Hong Kong in its evolution from an industrial-based to a knowledge-based economy. AP has over 34 laboratories with advanced equipment and facilities for supporting our teaching and research. The Department strives for excellence in teaching, research, and professional services.

- PhD and MPhil
- BSc (Hons) in Physics with a Secondary Major in AI & Data Analytics / Innovation and Entrepreneurship

Awards and Achievements

- FS's inventions and innovative projects have won top prizes at the International Exhibition of Inventions of Geneva, TechConnect Global Innovation Awards, Seoul International Invention Fair in Korea, and Design for Asia Awards in Hong Kong.
- Establishment of a mass spectral database for rapid authentication of edible oils using MALDI-MS; discovery of a newly emerged superbug - hyper-resistant and hypervirulent *Klebsiella pneumoniae*; FashionAI dataset for systematic categorisation of fashion images; etc.

Top Employers

- American International Assurance Co. (Bermuda) Ltd
- Bank of China (Hong Kong) Ltd
- Cathay Pacific Airways Ltd
- Deloitte Touche Tohmatsu Ltd
- Ernst & Young
- Eu Yan Sang (Hong Kong) Ltd
- Hospital Authority
- Intertek Testing Services Hong Kong Ltd
- Johnson & Johnson (Hong Kong) Ltd
- SGS Hong Kong Ltd
- The Hongkong & Shanghai Banking Corp. Ltd (HSBC)
- UL VS Hong Kong Ltd