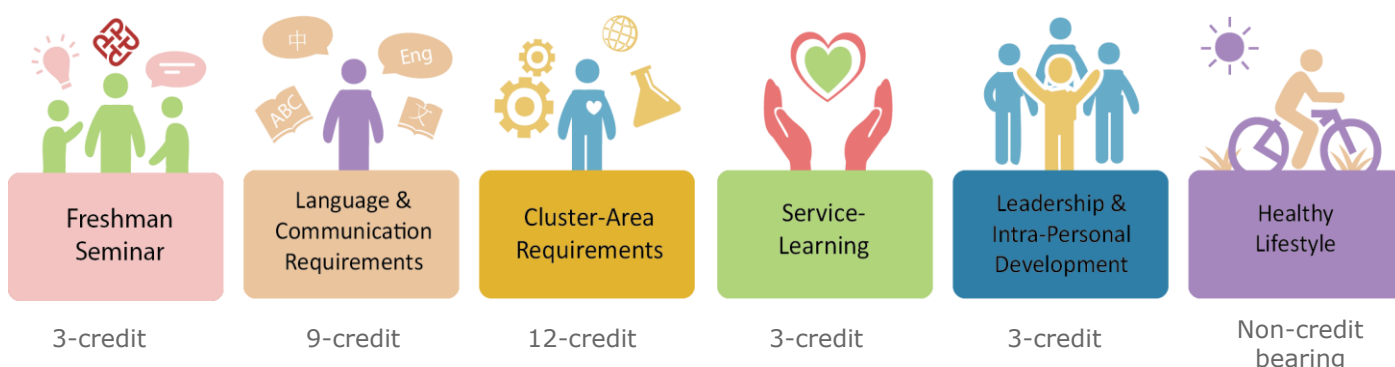


## General University Requirements (GUR) (for students admitted in 2021/22 or before)

General University Requirements (GUR) aims to widen your horizons and promote holistic development in your undergraduate years. It also contributes significantly to your development of PolyU's desired graduate attributes. There are six components in GUR:



### ➤ Freshman Seminar

Freshman Seminar aims to introduce you to your chosen discipline and to engage you in the desirable forms of learning at university that emphasize self-regulation, autonomous learning and deep understanding. Depending on your programme of study, you will be pre-assigned one of the Freshman Seminar subjects.

**What you need to do (4-Year Degree students):** Complete this 3-credit subject in your first year as pre-assigned by your Faculty/ Department.

### ➤ Language & Communication Requirements (LCR)

LCR aims to help you become an effective communicator by developing your language competence for academic and professional needs. All students are required to take 9 credits of LCR subjects, including English (6 credits) and Chinese (3 credits).

**What you need to do (4-Year Degree students):** Complete two 3-credit English language subjects and one 3-credit Chinese language subject as pre-assigned according your language competence.

### ➤ Leadership & Intra-Personal Development

Leadership and Intra-Personal Development aims to introduce you to the concepts and theories of leadership and to prepare you to become ethical leaders.

**What you need to do (4-Year Degree students):** Complete a 3-credit LIPD subject.

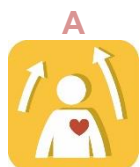
### ➤ Healthy Lifestyle

The Healthy Lifestyle (HLS) programme is a set of courses and activities covering different dimensions of health that aims to help you build up a healthy lifestyle. Through this programme, you will acquire knowledge on healthy living that contributes to one's well-being and be able to make responsible health decisions. The current HLS programme consists of four components that need to be completed in sequence.

**What you need to do (4-Year Degree students):** Enrol in the Healthy Lifestyle programme as instructed by Student Affairs Office (SAO).

## ➤ Cluster-Area Requirements (CAR)

CAR aims to expand your intellectual capacity beyond disciplinary domains and to enable you to tackle professional and global issues from a multidisciplinary perspective. CAR includes broader range of academic subjects that use different paradigms, theoretical perspectives and methods of enquiry across the following four cluster areas:



Human Nature, Relations and Development



Community, Organisation and Globalisation



History, Cultures and World Views



Science, Technology and Environment

In addition to the four clusters, there are three attributes embedded in some CAR subjects.

1. **China Studies Requirement (CSR)** to help you understand aspects of Chinese culture, history and contemporary developments.
2. **English Writing and Reading Requirements (EW/ER)** to further enhance your proficiency in English.
3. **Chinese Writing and Reading Requirements (CW/CR)** to further enhance your proficiency in Chinese.



**What you need to do (4-Year Degree students):** Complete at least one 3-credit subject in each of the four areas, among which you have to fulfill the Reading and Writing Requirements in Chinese and English (ER/W and CR/W), and China Studies Requirement (CSR).

## ➤ Service-Learning

Service-Learning aims to help you develop into a competent professional with a heart to serve others. This subject contains a significant service component, which allows you to apply your skills and knowledge to deal with complex issues in social services, develop a stronger empathy for people in need and develop a stronger sense of civic responsibility.



**What you need to do (4-Year Degree students):** Take one 3-credit Service-Learning subject. Some Service-Learning subjects are embedded in the major study curriculum and to be taken as Discipline-Specific Requirements (DSR) subjects. However, the majority of PolyU students will need to choose Service-Learning subjects on their own. Please check your Programme Requirement Document for details.

---

**Important Note:** If you are admitted as a Senior Year Intakes student or through the Articulation Degree Programmes, your actual required GUR components may be less than the students from 4-Year Degree students. Please refer to the GUR Guidance Notes/OUS website as shown below for more details.

You should consult your Academic Advisor to discuss your study plan for major and GUR subjects. Contact information of your Academic Advisor could be found in eStudent.

For general enquiries on GUR, you may contact [ous.eng@polyu.edu.hk](mailto:ous.eng@polyu.edu.hk) or 34008203.

---

For more details, please visit:



Guidance Notes - General University Requirements  
[https://www.polyu.edu.hk/ous/docdrive/Guidance\\_Notes\\_for\\_GUR\\_\(For\\_students\\_admitted\\_in\\_2021-22\\_or\\_before\)\\_2022.pdf](https://www.polyu.edu.hk/ous/docdrive/Guidance_Notes_for_GUR_(For_students_admitted_in_2021-22_or_before)_2022.pdf)



Office of Undergraduate Studies (OUS)  
<https://www.polyu.edu.hk/ous/>