

LSGI - SCRI Joint Distinguished Lecture

Urban Informatics & Smart Cities

Date: 29 March 2021 (Mon)

Time: 4:00pm - 5:00pm

Venue: Online@Zoom

Language: English



Prof. John Wen-zhong SHI

*Chair Professor in GISci and Remote Sensing, LSGI
Director of Smart Cities Research Institute*

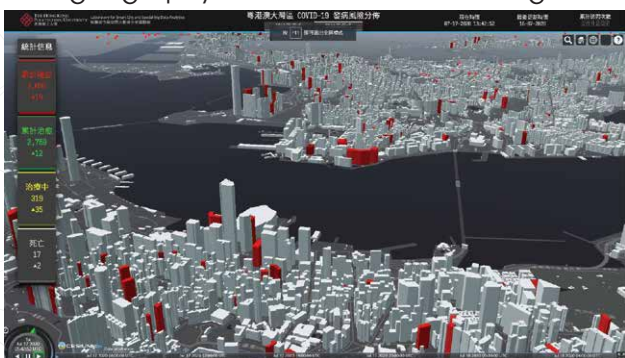
Biography

Prof. Shi obtained his doctoral degree from University of Osnabrück in Vechta, Germany in 1994. He is Academician of International Eurasian Academy of Sciences, Otto Poon Charitable Foundation Professor in Urban Informatics, Chair Professor in GISci and remote sensing, The Hong Kong Polytechnic University (PolyU). He serves as Director of PolyU-Shenzhen Technology and Innovation Research Institute (Futian), Smart Cities Research Institute, PolyU. He also serves as Editor-in-Chief, International Journal of Urban Informatics.

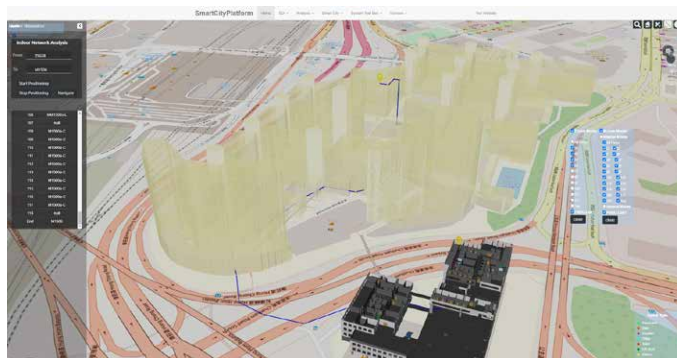
Prof. Shi's current research interests include urban informatics for Smart Cities, GISci and remote sensing, intelligent analytics and quality control for spatial big data, artificial-intelligence-based object extraction and change detection from satellite imagery, and mobile mapping and 3-D modelling based on LiDAR and remote sensing imagery. He has published more than 250 research articles that are indexed by Science Citation Index (SCI) and 15 books.

Urban Informatics & Smart Cities

In his talk, Prof. Shi will highlight the territory's great potential for becoming an international leading innovation centre in urban informatics, which is the technology foundation for Smart Cities, with a comprehensive overview of its existing research strengths related to urban informatics, including GIScience, remote sensing and satellite positioning, artificial intelligence, urban planning, urban policy and geography, as well as urban and regional studies.



Buildings with confirmed COVID-19 cases in the Guangdong-Hong Kong-Macao Greater Bay Area



Indoor and outdoor integrated point-to-point 3D navigation (Hong Kong Polytechnic University campus)

All are WELCOME!

To register, please go to <https://forms.gle/yLaSBV9kT14EY3FMA>

For enquiries, please contact Ms. Anna Choi at anna.choi@polyu.edu.hk or 3400 8158.

