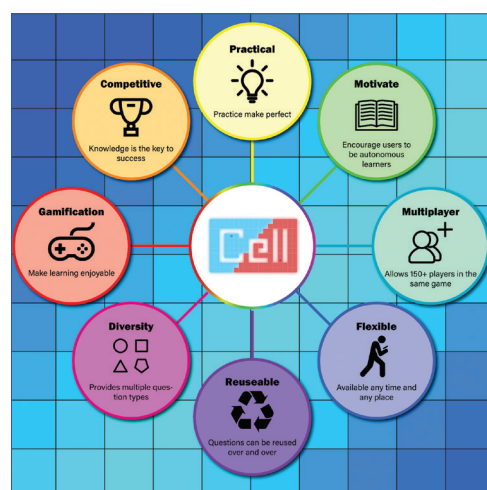


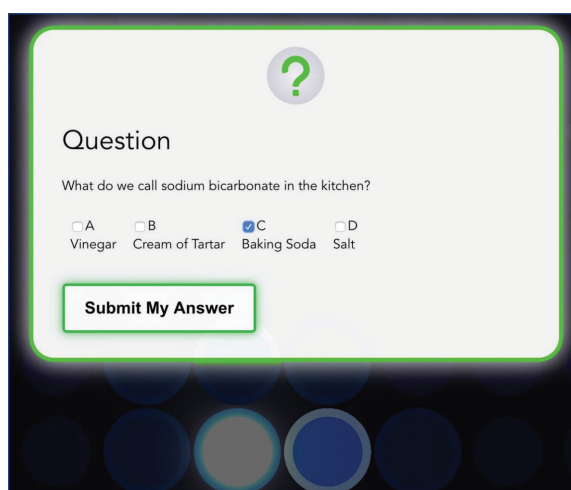
The Cell Game 在線多人棋類競技遊戲

寓學習於娛樂的STEM教育輔助工具

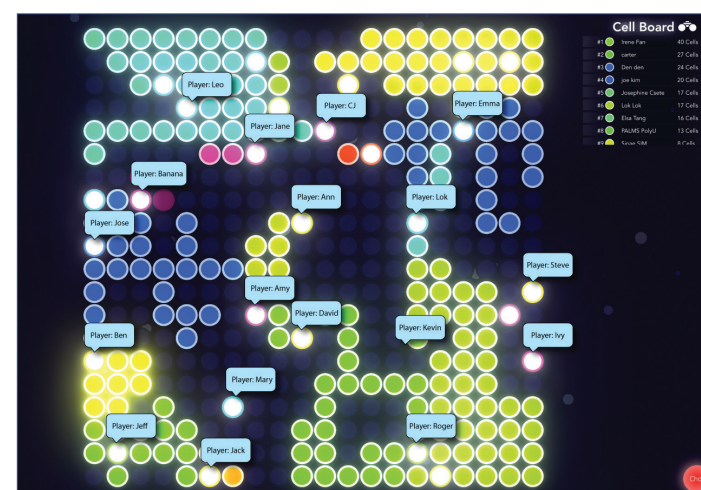
The Cell Game是一個網上多人在線圍棋競技遊戲，當中結合了遊戲與教學，讓學生通過娛樂來學習、複習及鞏固知識。學生可以個人身份或組隊參與遊戲，下棋前均須先回答問題。遊戲設有聊天室，供學生與隊友進行團隊協作和討論，藉以解決問題。此遊戲能鼓勵學生自學，為解答問題而作準備和溫習。遊戲包含基於機器學習的手寫數字和符號識別功能，以及便於表達數學概念的等效簡化功能。這些功能對於科學、科技、工程和數學(STEM)科目的教學尤其有用，無論作為學生的自學工具或傳統面授課程的輔助工具，均非常合適。該程式供全球免費使用。



"The Cell Game" 的特色



教師建立遊戲題目，向學生發出挑戰



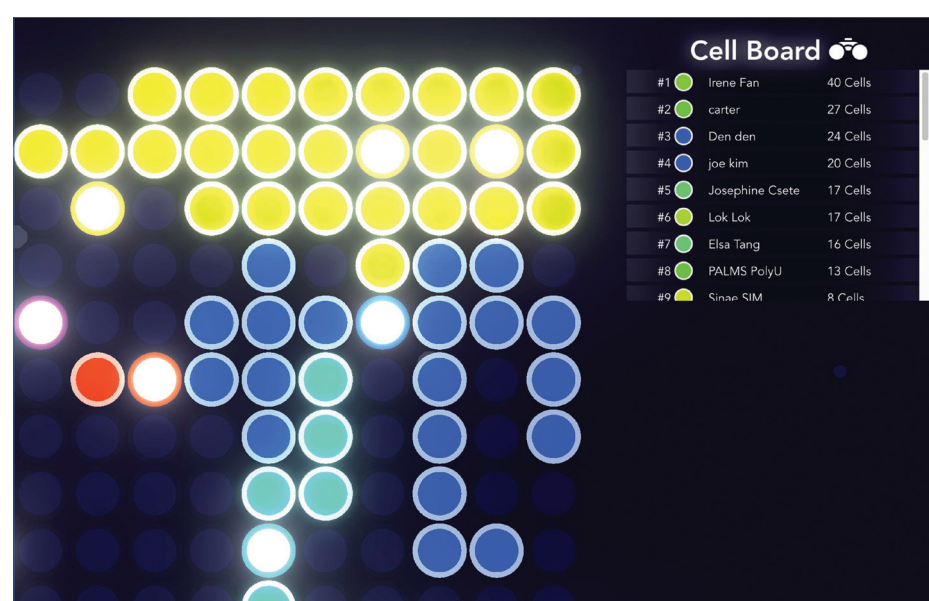
學生通過學習和複習知識來擴大領土，贏取比賽

特色與優點

- 提供6個問題類別，包括選擇題、文字作題等
- 教師可輸入新題目並建立問題庫
- 每局可支持多達二百人同時參與
- 適合教授需以符號或數學公式作答的科目，如科學、工程和數學等
- 設有聊天室，供學生進行團隊討論，協力解決問題

應用

- 遊戲式課後作業



遊戲顯示所有玩家的實時排名

首席研究員

應用數學系陳世道博士

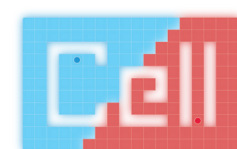
聯絡方式

企業發展院

(852) 3400 2929

✉ ife.admin@polyu.edu.hk

☎ 微信賬號 Polyuife



<https://the-cell-game.com/>

透過手機獲取更多資訊

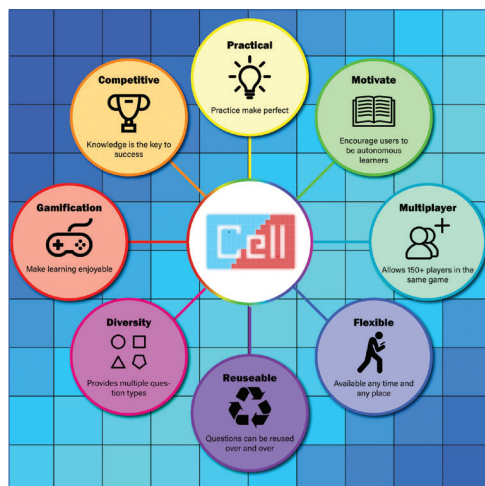


4_AMA_03_0920

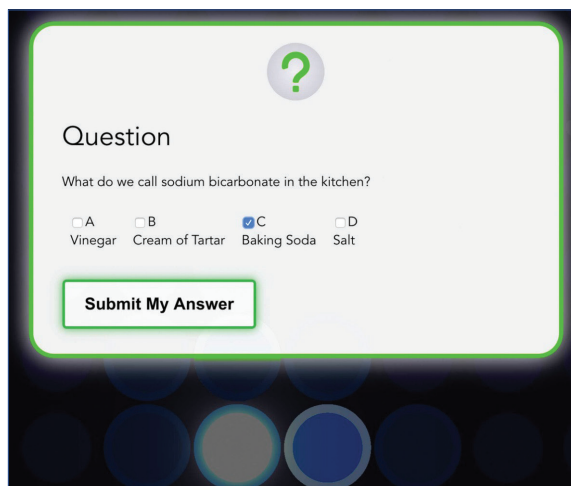
The Cell Game: an Online Multiplayer Competitive Board Game

A STEM educational tool that enhances learning with entertainment

The Cell Game is a web-based online multiplayer competitive educational game based on the strategic board game "Go". Combining gaming and education, it aims to encourage students to learn new knowledge as well as review and reinforce existing knowledge. Students can join the game as a single player or in teams, and they need to answer questions to make moves on the game board. The game includes chatroom facilities for students to collaborate and hold discussions to solve problems with their team members. The elements of gamification and competition in learning can motivate students to study, do preparation and solve problems on their own! With its machine learning-based function for recognizing handwritten numbers and symbols and its powerful of equivalent simplification of mathematical expressions, it is an ideal tool for STEM education and for supplementing traditional face-to-face classes. The programme is free for use worldwide.



Features of "The Cell Game"



Teachers set up their questions to challenge the students



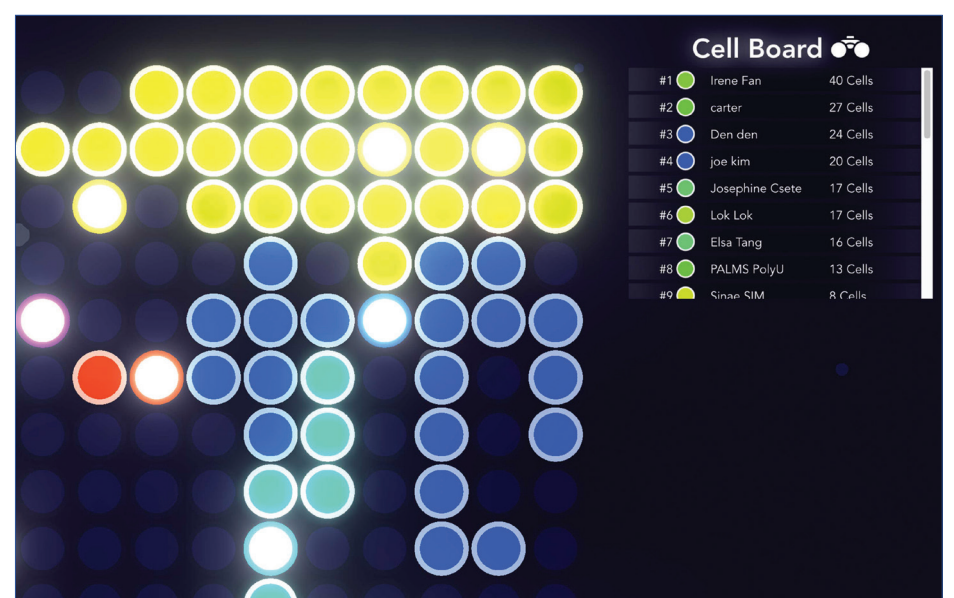
Through learning and doing revisions, students compete to win the game by expanding their zones

Special Features and Advantages

- Offers 6 types of questions, including multiple choice, free text question, etc.
- Teachers can create their own questions and forming question banks
- Supports up to 200 players in each round
- Great for teaching subjects which require symbols or math equations, e.g. Science, Engineering and Mathematics
- Includes chatroom facilities for students to engage in team discussions and practise collaborative problems solving

Application

- Game-based homework assignments



The currents rankings of all players are displayed in real time

Principal Investigator

Dr Fridolin Sze-thou TING

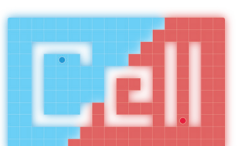
Department of Applied Mathematics

Contact Details

Institute for Entrepreneurship

(852) 3400 2929 ife.admin@polyu.edu.hk

WeChat ID: Polyuife



<https://the-cell-game.com/>

Access More info via mobile



4_AMA_03_0920