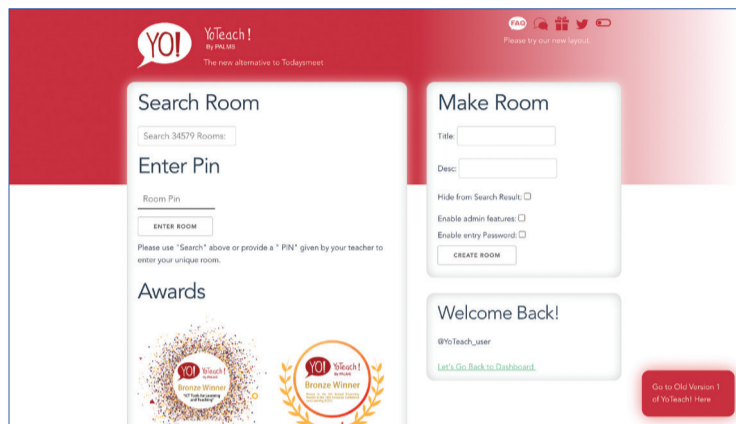


YoTeach! 匿名問答教育平台

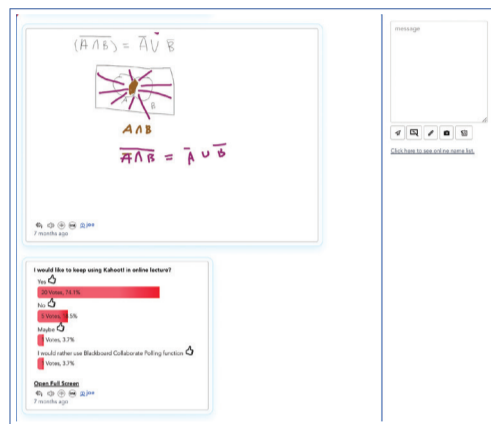
支持多種主動教學法的STEM教育輔助工具

大部分學生甚少在上課時主動發問和回答問題。為鼓勵學生積極投入學習，理大開發了YoTeach!匿名問答教育平台，讓學生進行匿名討論。

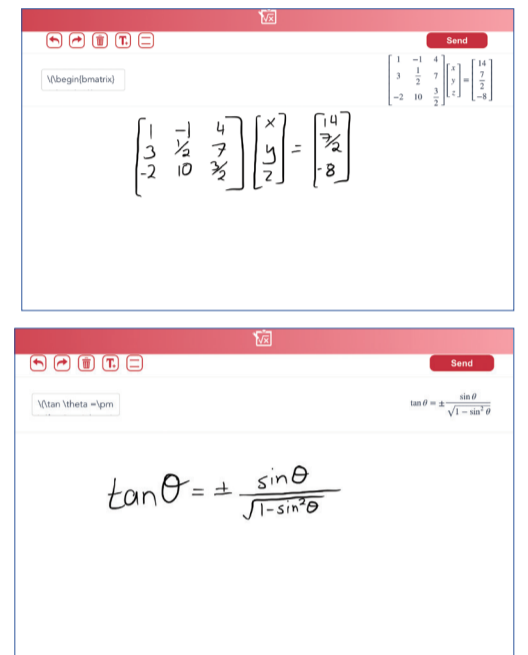
教師在YoTeach!開設網上討論室後，學生便可於其中進行匿名提問或討論。該平台支援文字傳送、互動繪圖及圖像上傳，同時具有投票、圖片註釋及基於機器學習的手寫數字及符號辨識功能，方便以計算、方程式和圖表表達科學概念，因此適用於科學、科技、工程和數學(STEM)科目的遙距教學，亦是傳統面授課程的理想輔助工具。該程式供全球免費使用。



YoTeach! 平台設定及登入頁



YoTeach! 網上討論室



用戶可利用YoTeach! 基於機器學習的手寫數字、符號和繪圖識別功能寫出方程式

特色與優點

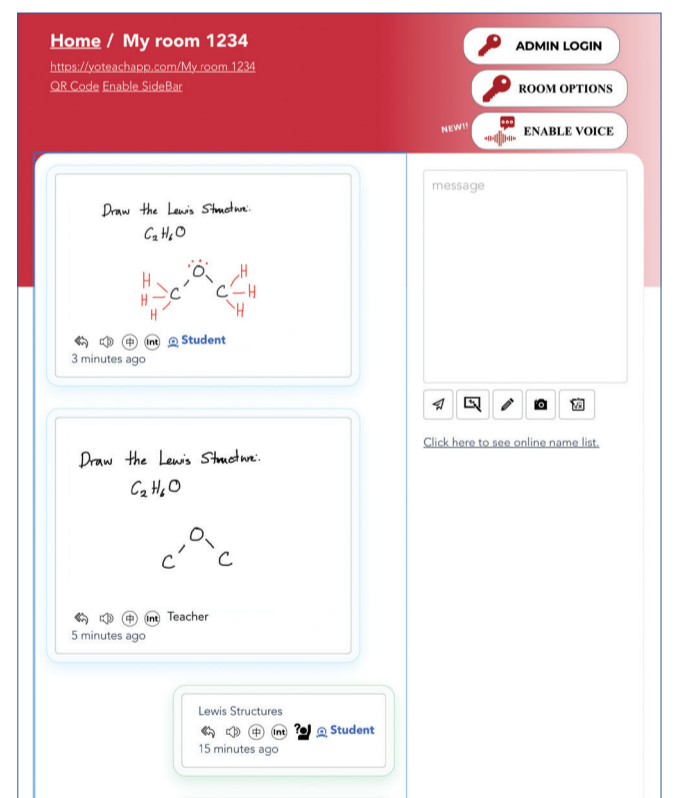
- 匿名提問、評論及討論
- 文字傳送、繪圖、相片上傳和實時互動繪圖功能
- 投票、民意調查及圖片註釋功能
- 基於機器學習的手寫數字、符號和繪圖識別功能

應用

- 傳統面授或網上課堂
- 會議、工作坊或研討會中的演講

獎項

- 賓夕法尼亞大學沃頓商學院 - 全球教學創新大獎 - 用於教學的資訊及通訊科技類別 - 銅獎 (2019年12月)
- 歐洲電子學習會議 - 第5屆卓越電子教學獎 - 銅獎



用戶可利用YoTeach! 文字傳送、互動繪圖及圖像上傳等功能進行匿名提問或討論

首席研究員

應用數學系陳世道博士

聯絡方式

企業發展院

(852) 3400 2929

✉ ife.admin@polyu.edu.hk

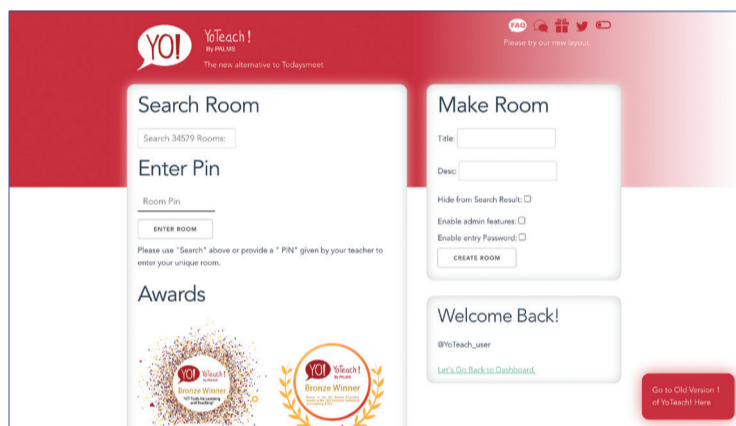
☎ 微信賬號 Polyuife



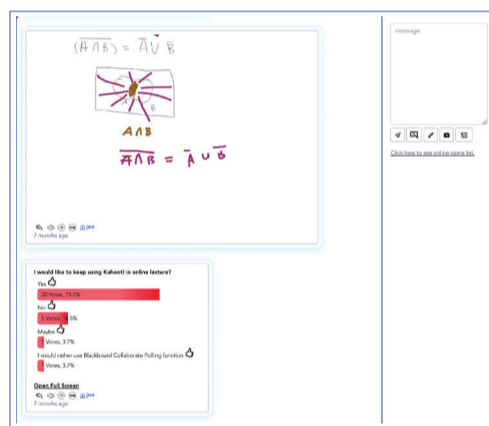
YoTeach!: Educational and Anonymous Backchannel Chatroom Platform

A STEM educational enhancing tool that supports multiple active teaching pedagogies

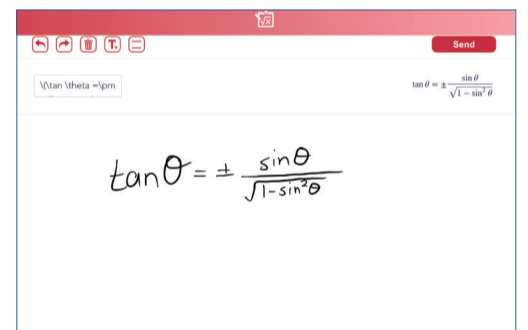
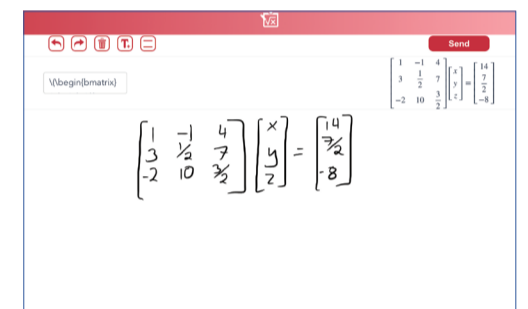
Many students seldom ask and answer questions proactively in class. To encourage students to engage in learning, PolyU developed "YoTeach!", an educational backchannel chatroom platform that allows anonymous discussions. It is an ideal tool for teachers to improve student engagement in traditional or online classes. Once a teacher sets up an online discussion room on YoTeach!, students can ask questions or initiate peer discussions there. The platform supports text sending, interactive drawing and image uploading. Other functions include voting, image annotation, as well as machine learning-based recognition of hand-written numbers and symbols. These functions help to convey scientific concepts with calculations, equations and diagrams, making it an ideal tool for teaching STEM subjects via distance learning and for supplementing traditional face-to-face classes. The programme is free for use worldwide.



The setting and entrance page of YoTeach! platform



An online discussion room on YoTeach!



Users can use the machine learning-based hand-written number, symbol and drawing recognition function in YoTeach! to write formulas

Special Features and Advantages

- Anonymous questions, comments and discussions
- Text sending, drawing and picture uploading as well as real-time interactive drawboard
- Voting, polling and image annotation
- Machine learning-based recognition of hand-written numbers, symbols and drawing

Applications

- Traditional face-to-face or online classes
- Presentation in conferences, workshops or seminars

Awards

- Wharton-Quacquarelli Symonds (QS) Reimagine Education Awards: Bronze Winner in the "ICT Tools for Learning, Teaching and Support" Award Category (Dec 2019)
- The 5th e-Learning Excellence Awards at the European Conference on eLearning (ECEL): Bronze Award Winner (Nov 2019)

Principal Investigator

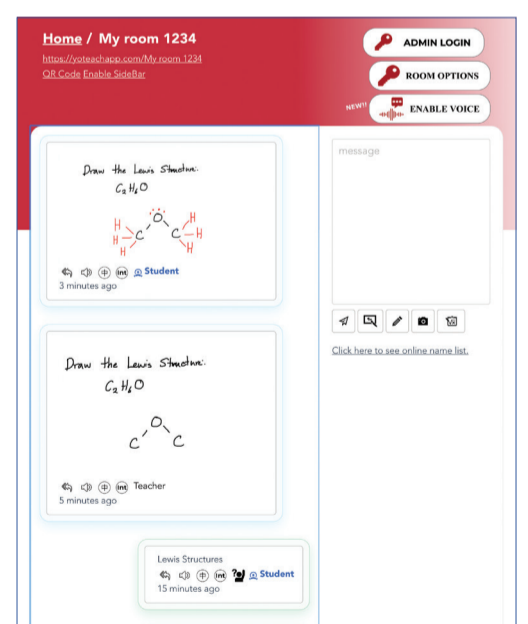
Dr Fridolin Sze-thou TING
Department of Applied Mathematics

Contact Details

Institute for Entrepreneurship

(852) 3400 2929 ife.admin@polyu.edu.hk

WeChat ID: Polyuife



Users can use the text sending, interactive drawing and image uploading functions in YoTeach! to ask questions or initiate peer discussions

