

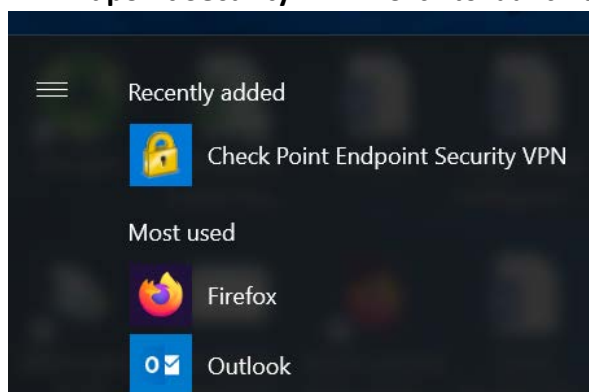


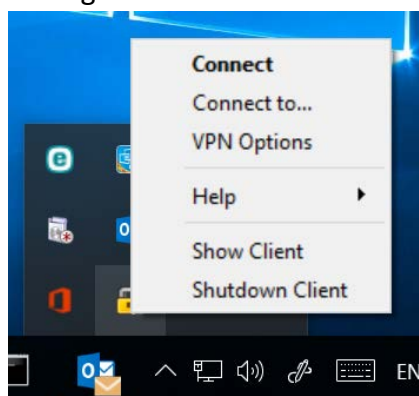
Guide on adding a new site in the Check Point VPN client software to use China Telecom express secure VPN service

Microsoft Windows OS:

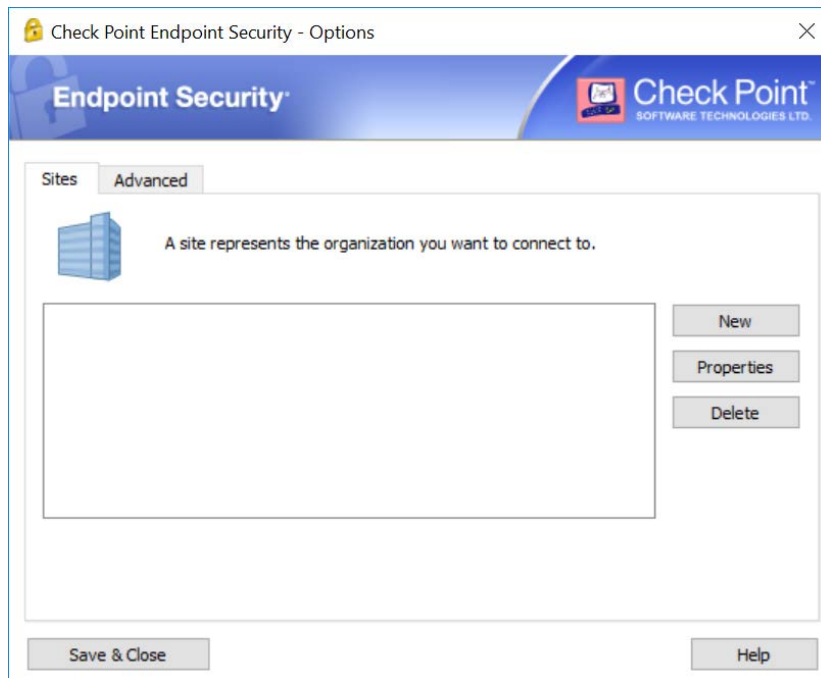
- Make sure the VPN client software is up and running. If it is running, you should find the  icon in the status bar.
- If not, click on the  Windows icon, search for application with name “**Check Point Endpoint Security VPN**”. Click to launch the application.



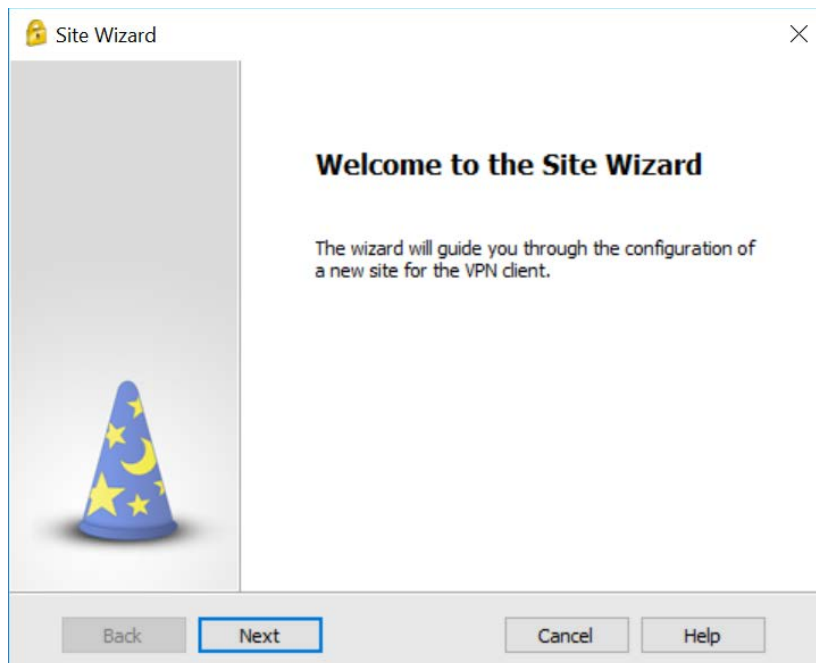
- Right click on the  icon and select **VPN Options**



- On the **Sites** tab, click **New** to launch the Site Wizard.



- Click **Next** to continue



- Enter “**ctexpress.polyu.edu.hk**” as the server address and click **Next**

Site Wizard

Welcome to the Site Wizard
A site is your gateway to network resources.

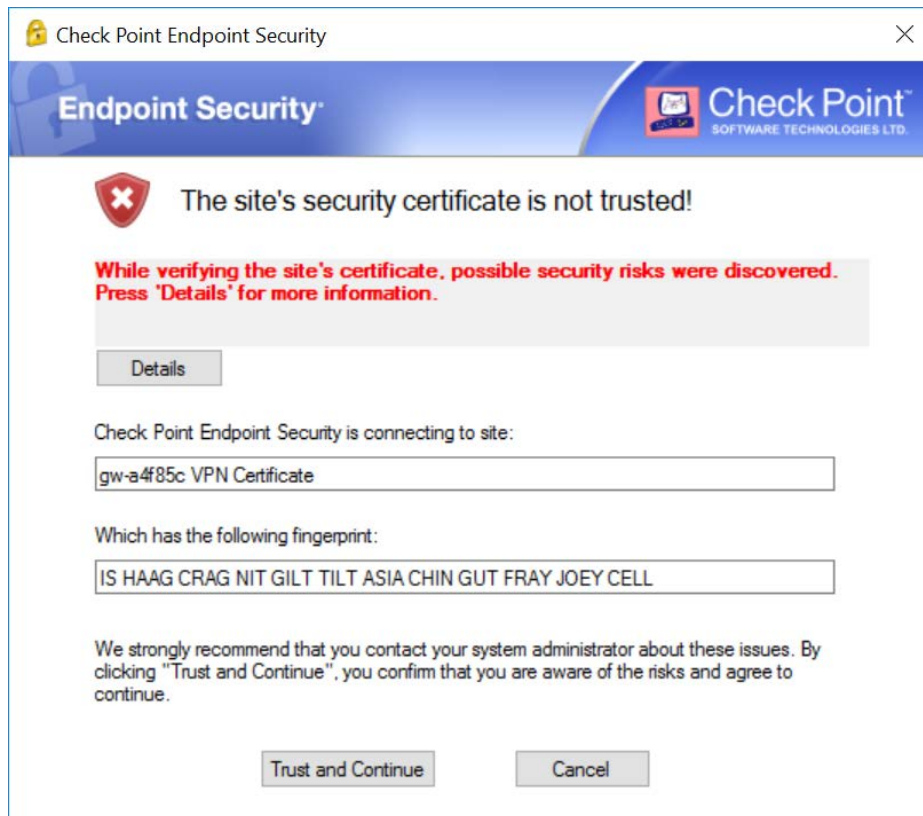
To continue, fill in the required information and click next.

Server address or Name:

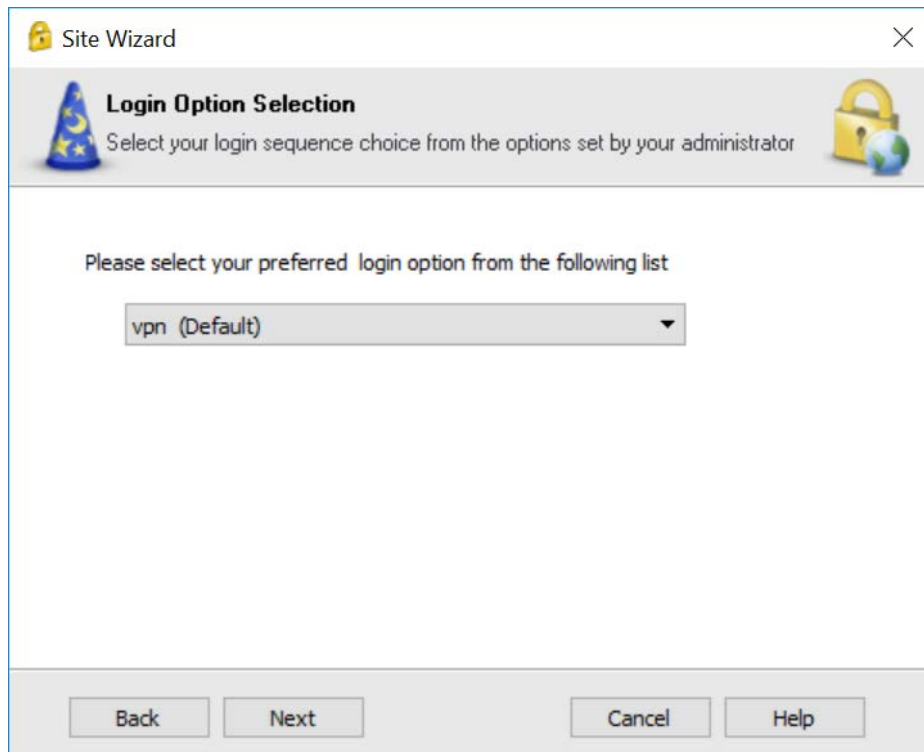
Display name:

Back Next Cancel Help

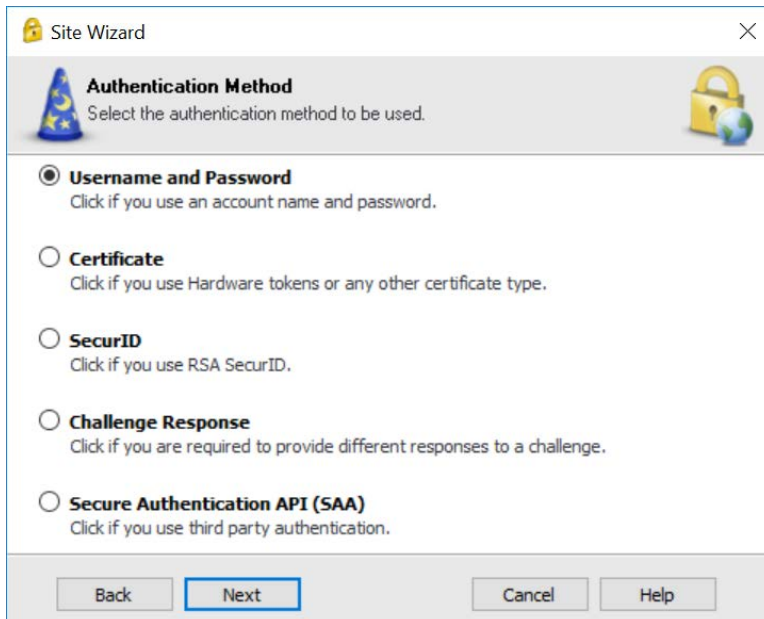
- Click **“Trust and Continue”** to trust the site’s certificate



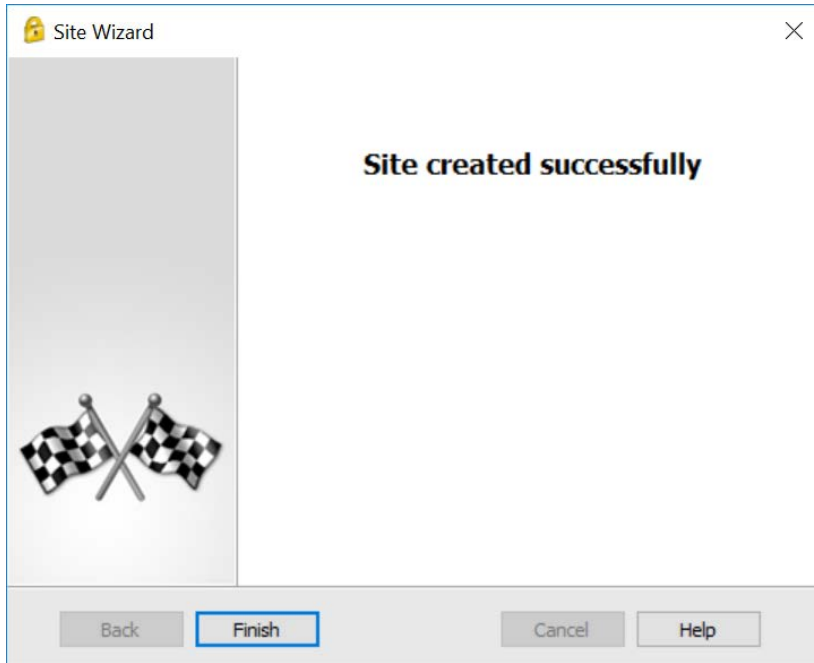
- Leave login option as default and click **Next**



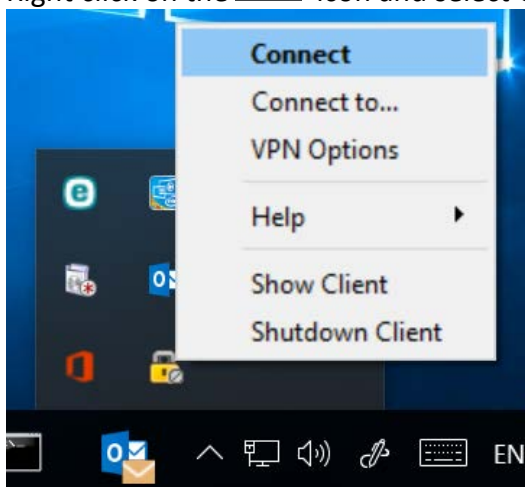
- Select **“Username and Password”** as the authentication method



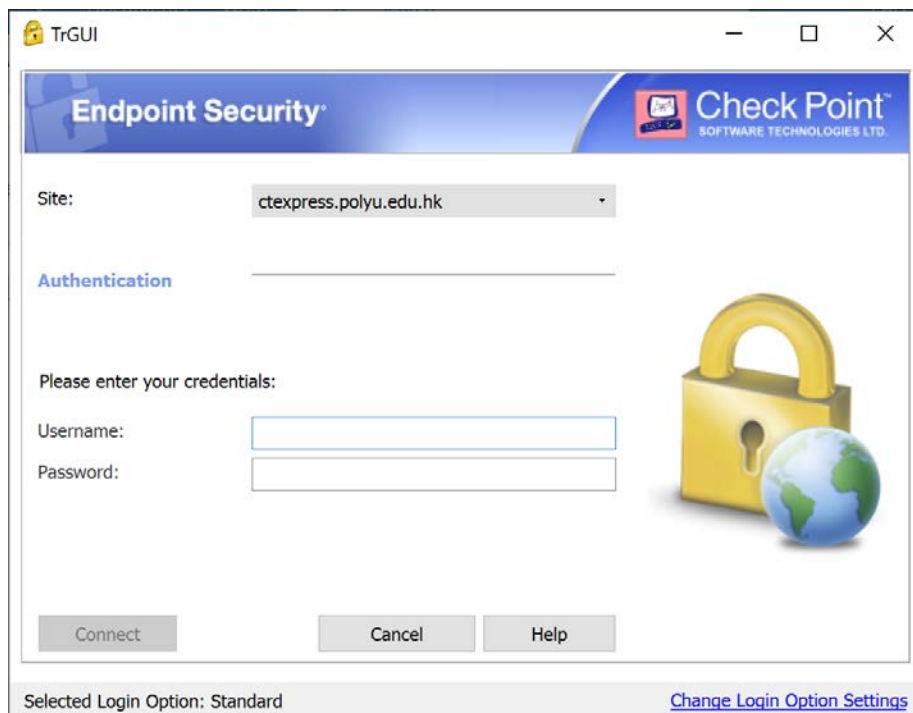
- The site configuration is now completed. Click **Finish** to end the Site Wizard.



- Right click on the  icon and select **Connect**



- You can now choose to connect to the new site.



Apple Mac OS:

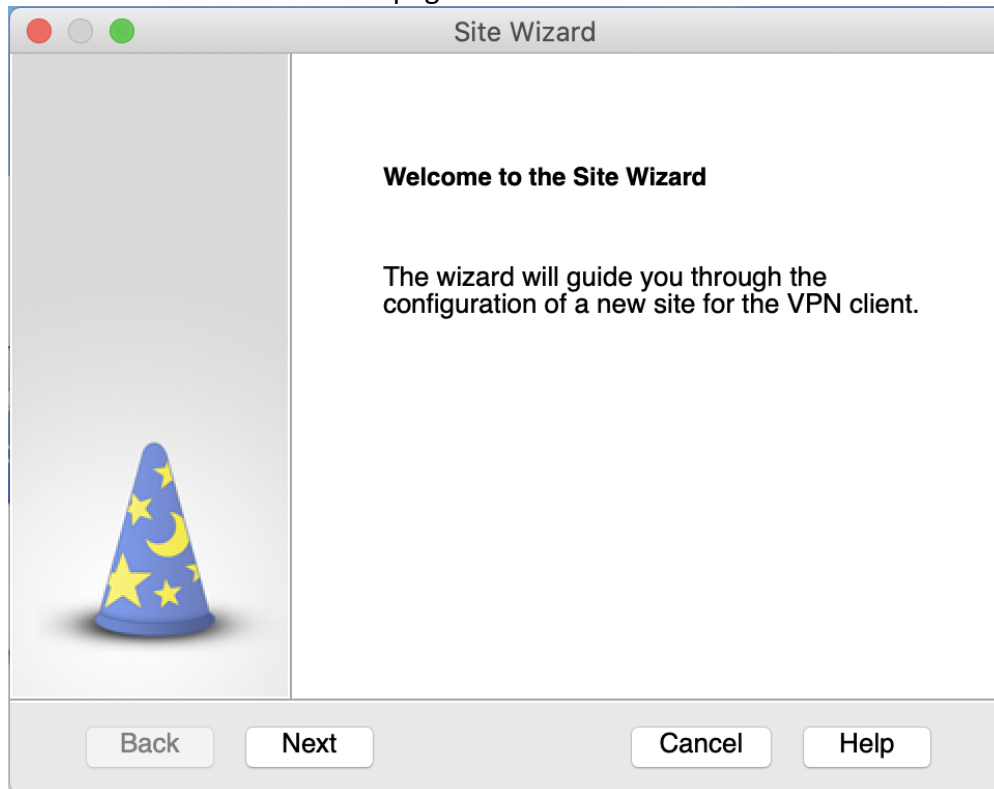
- Run the Check Point Endpoint Security (Check Point VPN Client) and click **“Connect to...”**



- Click Site and click [New Site]



- You will be led to a Welcome page. Click **Next**.



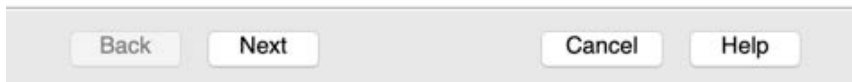
- Enter “ctexpress.polyu.edu.hk” as the server address, then click **Next**.



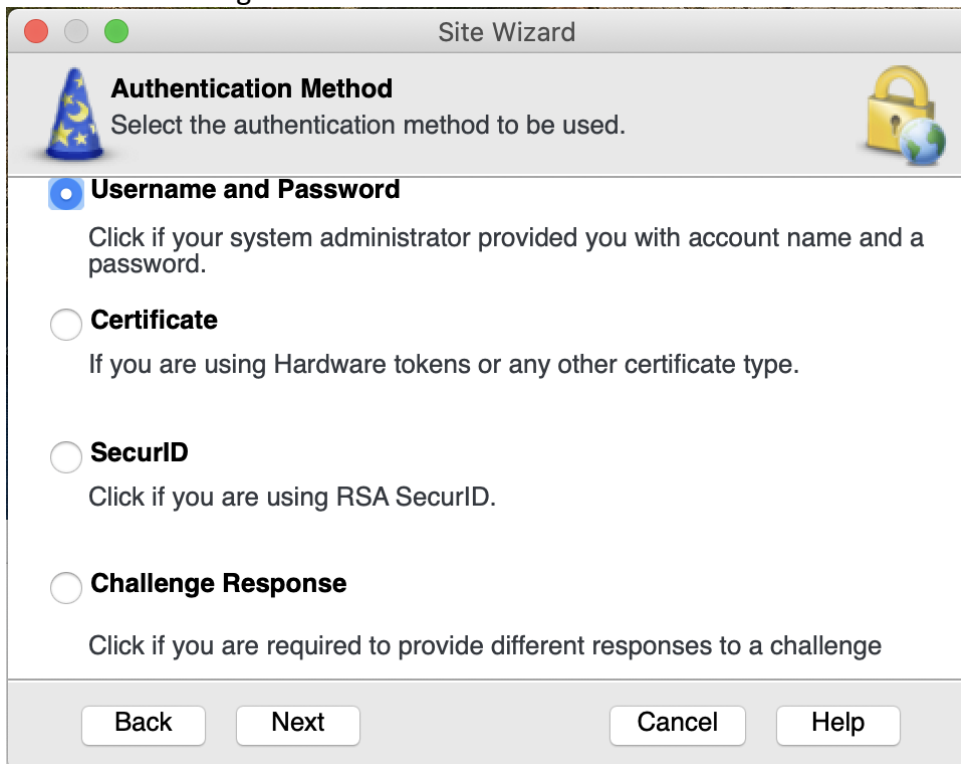
To continue, fill in the required information and click next.

Server address or Name:

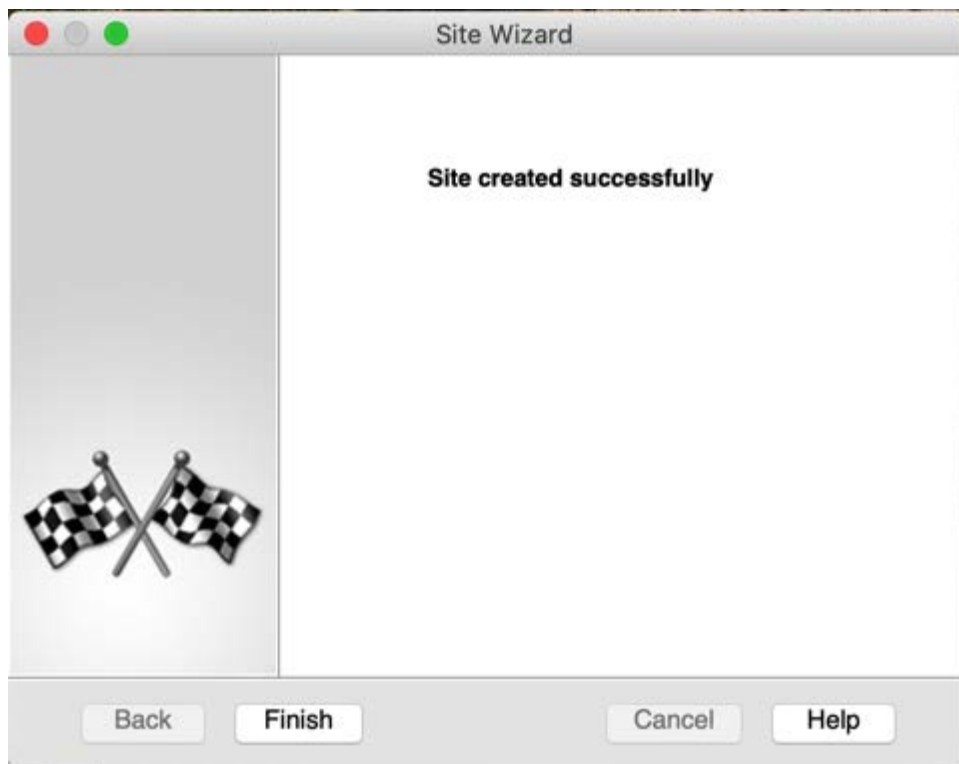
Display name:



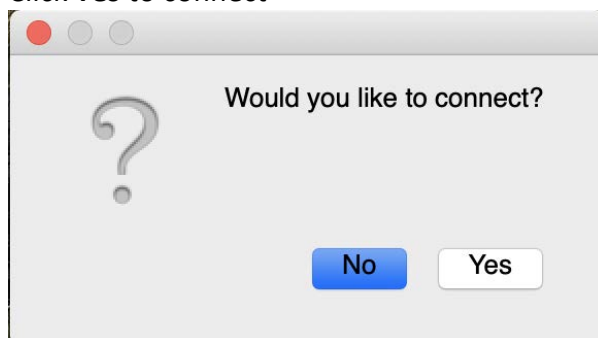
- Use default setting “Username and Password” and click **Next**



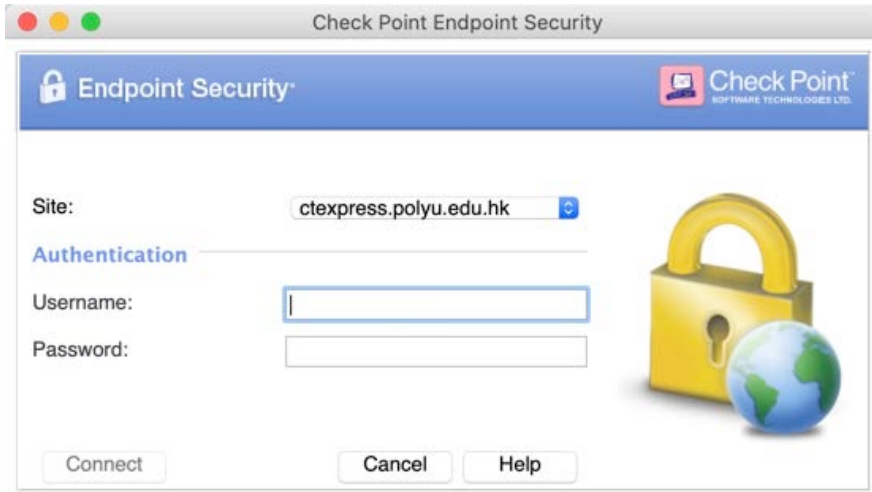
- You have created a new site successfully.



- Click **Yes** to connect



- You can use the new site to connect now. Please enter your Username and Password to login and click "Connect".



~~~~~End of Document~~~~~