



THE HONG KONG  
POLYTECHNIC UNIVERSITY  
香港理工大學

2019/20年度

香港理工大學主要統計數字

# POLYU IN FIGURES 2019/20

## CONTACT INFORMATION 聯絡資料

The Hong Kong Polytechnic University 香港理工大學  
Hung Hom 紅磡 | Kowloon 九龍 | Hong Kong 香港

☎ [852] 2766 5111    🌐 [www.polyu.edu.hk](http://www.polyu.edu.hk)

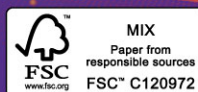
## CAMPUS MAP 校園地圖



PolyU Main Campus  
理大主要校園

PolyU Hung Hom Bay Campus and Facilities  
理大紅磡灣校園及設施一覽

PolyU West Kowloon Campus and Facilities  
理大西九龍校園及設施一覽





# CONTENTS 內容

02 Introduction 簡介

03-04 Milestones 里程碑

OPENING MINDS • SHAPING THE FUTURE 啟迪思維 • 成就未來

## EDUCATION 教育

05-06 Faculties, Schools and Departments 學院及學系

07 Students 學生

08 Staff 職員

09-10 PolyU Service-Learning 理大服務學習

11-12 Graduates 畢業生

## RESEARCH 科研

13-14 Research and Innovation 科研及創新

15-16 Rapid Automated Multiplex Diagnostic System for Testing Infectious Respiratory Disease  
全球最全面診斷系統 快速檢測呼吸道傳染病

## KNOWLEDGE TRANSFER AND WIDER ENGAGEMENT 知識轉移及廣泛參與

17-18 Enabling Drivers to Make Informed Route Choices through Smart 'Real-time Traffic Information' Solutions  
智能實時交通資訊解決方案使駕駛者能做出明智的路線選擇

19 Entrepreneurship Development 創業發展

## INTERNATIONALISATION AND ENGAGEMENT WITH THE NATION 國際化及參與國家發展

20 Rankings 排名

21-22 Global Connections 環球網絡

## FINANCIAL HEALTH AND INSTITUTIONAL SUSTAINABILITY 財務健康與機構可持續性

23-24 Campus Facilities 校園設施

25-26 College of Professional and Continuing Education  
專業及持續教育學院

# INTRODUCTION 簡介

## Our Motto 校訓

To learn and to apply,  
for the benefit of mankind.  
開物成務 勵學利民

## Our Vision 願景

Be a leading university that advances and transfers knowledge, and provides the best holistic education for the benefit of Hong Kong, the nation and the world.

矢志成為一所在開拓及轉移知識、提供優質全人教育方面均領先的大學，為香港、國家及世界作出貢獻。



## Our Mission 使命

- To pursue impactful research that benefits the world.  
致力富有影響、造福世界的研究。
- To nurture critical thinkers, effective communicators, innovative problem solvers and socially responsible global citizens.  
培育敏於思辨、善於溝通、富於創見、精於解難，且勇於承擔社會責任的世界公民。
- To foster a University community in which all members can excel in their aspirations with a strong sense of belonging and pride.  
營造讓員生志存高遠、心有歸屬、樂於以大學為榮的環境。





### 1937

Founding of the Government Trade School in Wanchai, the first government funded, post-secondary technical school in Hong Kong.

香港官立高級工業學院正式成立，校舍位於灣仔，是全港第一所政府資助的專上程度工業學院。



### 1947

The School was renamed the Hong Kong Technical College after World War II.

第二次世界大戰後學院改名為香港工業專門學院（工專）。



### 1957

The Hong Kong Technical College moved to its new premises in Hung Hom.

工專遷往紅磡的新校舍。



### 1972

The Hong Kong Polytechnic (the Polytechnic) was formally established, taking over the campus of the Hong Kong Technical College.

香港理工學院（理工）正式成立，並沿用工專的校舍。



### 1994

Legislation was enacted to change the name of the Institution to "The Hong Kong Polytechnic University". Self-accreditation status was granted by the Government.

有關理工正名大學之修訂法案正式生效，理工正名為「香港理工大學」（理大），並獲政府頒授自我評審資格。



### 1999

Establishment of the School of Professional Education and Executive Development (SPEED) to foster lifelong education.

成立專業進修學院，致力促進終身學習。



### 2000

Inauguration of the Institute for Enterprise (IfE) to provide professional services for business and industry on a self-financed basis.

企業發展院成立，為工商界提供自負盈虧式的專業服務。



### 2001

Set up of Hong Kong Community College (HKCC) to offer an expanded range of Associate Degree programmes.

成立香港專上學院，提供多個範疇的副學士學位課程。



### 2011

Hotel ICON, a teaching and research hotel wholly-owned by PolyU, was officially opened.

理大全資擁有的教研酒店唯港薈正式開幕。



### 2014

Official opening of Jockey Club Innovation Tower.

賽馬會創新樓正式開幕。



### 2017

Redevelopment of Block X completed.

X座重建項目竣工。



## FACULTIES, SCHOOLS AND DEPARTMENTS

學院及學系

### FACULTY OF APPLIED SCIENCE & TEXTILES

應用科學及紡織學院



Department of Applied Biology and Chemical Technology

應用生物及化學科技學系

Department of Applied Mathematics

應用數學系

Department of Applied Physics

應用物理學系

Institute of Textiles and Clothing

紡織及服裝學系

### FACULTY OF BUSINESS

工商管理學院



School of Accounting and Finance

會計及金融學院

Department of Logistics and Maritime Studies

物流及航運學系

Department of Management and Marketing

管理及市場學系

### FACULTY OF ENGINEERING

工程學院



Department of Biomedical Engineering

生物醫學工程學系

Department of Computing

電子計算學系

Department of Electrical Engineering

電機工程學系

Department of Electronic and Information Engineering

電子及資訊工程學系

Department of Industrial and Systems Engineering

工業及系統工程學系

Department of Mechanical Engineering

機械工程學系

Interdisciplinary Division of Aeronautical and Aviation Engineering

航空工程跨領域學部

## EDUCATION 教育

- Nurturing future-ready global citizens  
培養敢於應對未來的世界公民
- Shaping socially responsible leaders of tomorrow  
塑造懷抱社會責任的未來領袖

### FACULTY OF CONSTRUCTION & ENVIRONMENT

建設及環境學院



Department of Building and Real Estate

建築及房地產學系

Department of Building Services Engineering

屋宇設備工程學系

Department of Civil and Environmental Engineering

土木及環境工程學系

Department of Land Surveying and Geo-Informatics

土地測量及地理資訊學系

### FACULTY OF HEALTH & SOCIAL SCIENCES

醫療及社會科學院



Department of Applied Social Sciences

應用社會科學系

Department of Health Technology and Informatics

醫療科技及資訊學系

Department of Rehabilitation Sciences

康復治療科學系

School of Nursing

護理學院

School of Optometry

眼科視光學院

### FACULTY OF HUMANITIES

人文學院



Department of Chinese and Bilingual Studies

中文及雙語學系

Department of Chinese Culture

中國文化學系

Department of English 英文系

Chinese Language Centre

中國語文教學中心

Confucius Institute of Hong Kong

香港孔子學院

English Language Centre

英語教學中心

### SCHOOL OF DESIGN

設計學院



### SCHOOL OF HOTEL & TOURISM MANAGEMENT

酒店及旅遊業管理學院





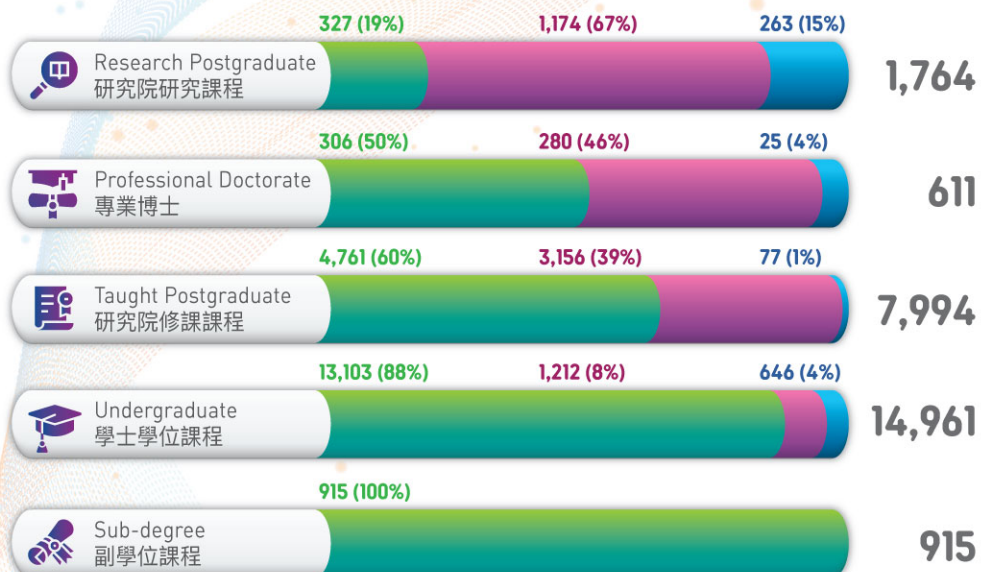
## STUDENTS

學生

Total Student  
Enrolment  
總學生人數

26,245

Student Enrolment by Level of Study and Place of Origin  
以課程類別及學生出生地區分類之學生人數



19,412 (74%) Hong Kong  
香港

5,822 (22%) Mainland China, Macau & Taiwan  
中國內地、澳門及台灣

1,011 (4%) Other Overseas Countries & Regions  
其他海外國家及地區

Student Enrolment by Mode of Programme  
以修讀模式分類之學生人數

Full-time  
全日制 20,932

Part-time  
兼讀制 5,313

## EDUCATION 教育

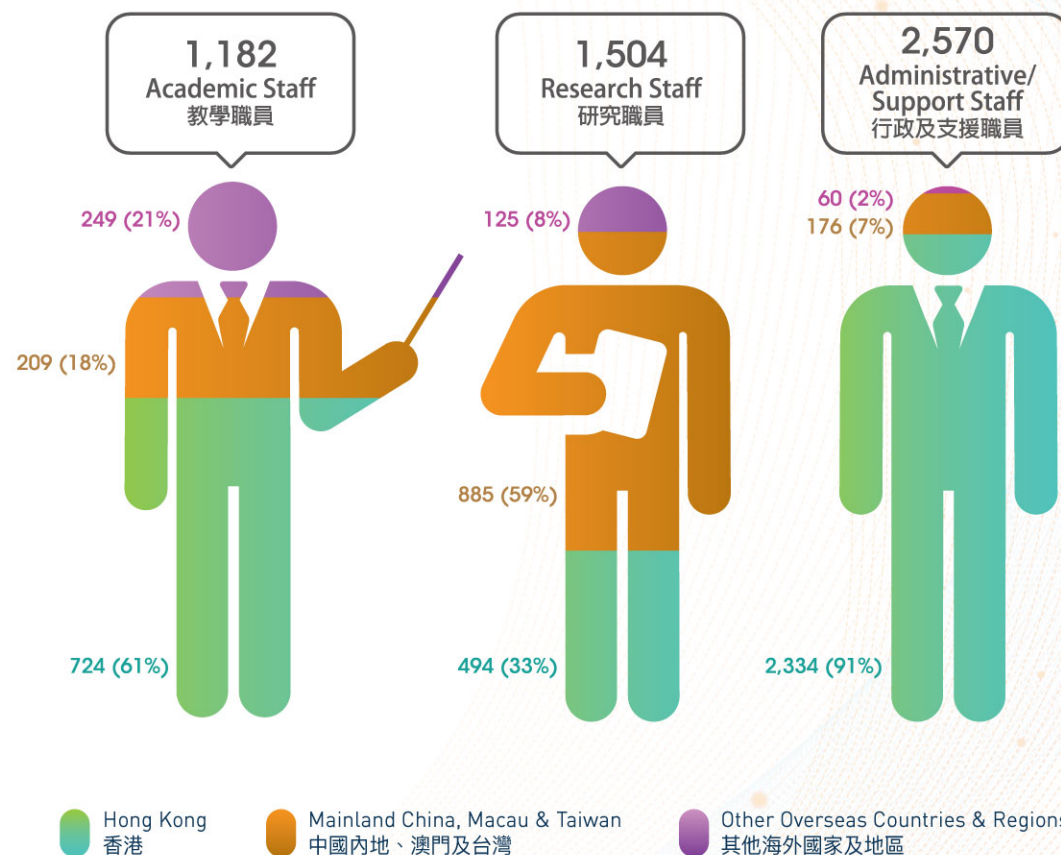
## STAFF

職員

- Nurturing future-ready global citizens  
培養敢於應對未來的世界公民
- Shaping socially responsible leaders of tomorrow  
塑造懷抱社會責任的未來領袖

Full-time Staff  
全職制職員

5,256



Hong Kong  
香港

Mainland China, Macau & Taiwan  
中國內地、澳門及台灣

Other Overseas Countries & Regions  
其他海外國家及地區

Part-time Staff  
兼職制職員

1,116



## POLYU SERVICE-LEARNING

### 理大服務學習

PolyU has been dedicated to cultivating responsible global citizens. Since the 2012/13 academic year, PolyU has incorporated service-learning into its new undergraduate curriculum as a mandatory subject.

Within eight years, service-learning (SL) has developed rapidly in PolyU, yielding remarkable and encouraging achievements. By the end of the 2019/20 academic year, over 24,400 students have attended SL courses, serving over 976,000 hours.

理大一直致力培育學生成為負責任的世界公民，自2012/13學年起，理大將服務學習納入新本科課程，成為必修科目。短短八年間，理大服務學習發展迅速，成績顯著，成果令人鼓舞。截至2019/20學年，已累積超過24,400名四年制本科生修讀服務學習課程，服務時數超過976,000小時。



3,833

NO. OF UNDERGRADUATE  
STUDENTS ENROLLED  
IN SL

修讀服務學習的  
本科生人數



153,320

NO. OF  
SERVICE HOURS  
服務時數

NO. OF SL  
SUBJECT-OFFERINGS  
開辦的服務學習  
科目數目

63



No. of Students  
Serving in  
參與服務學習的  
學生人數

3,274

SERVICE  
LOCATION  
服務地點

Hong Kong  
香港

350

Chinese Mainland and Taiwan  
(face to face or online)  
中國內地及台灣 (親身或網上)

209

Overseas (via online)  
海外(網上)



## EDUCATION 教育

## INTERNATIONAL SERVICE-LEARNING

### 海外的服務學習

- Nurturing future-ready global citizens  
培養敢於應對未來的世界公民
- Shaping socially responsible leaders of tomorrow  
塑造懷抱社會責任的未來領袖



VIETNAM  
越南

RWANDA  
盧旺達

CAMBODIA  
柬埔寨



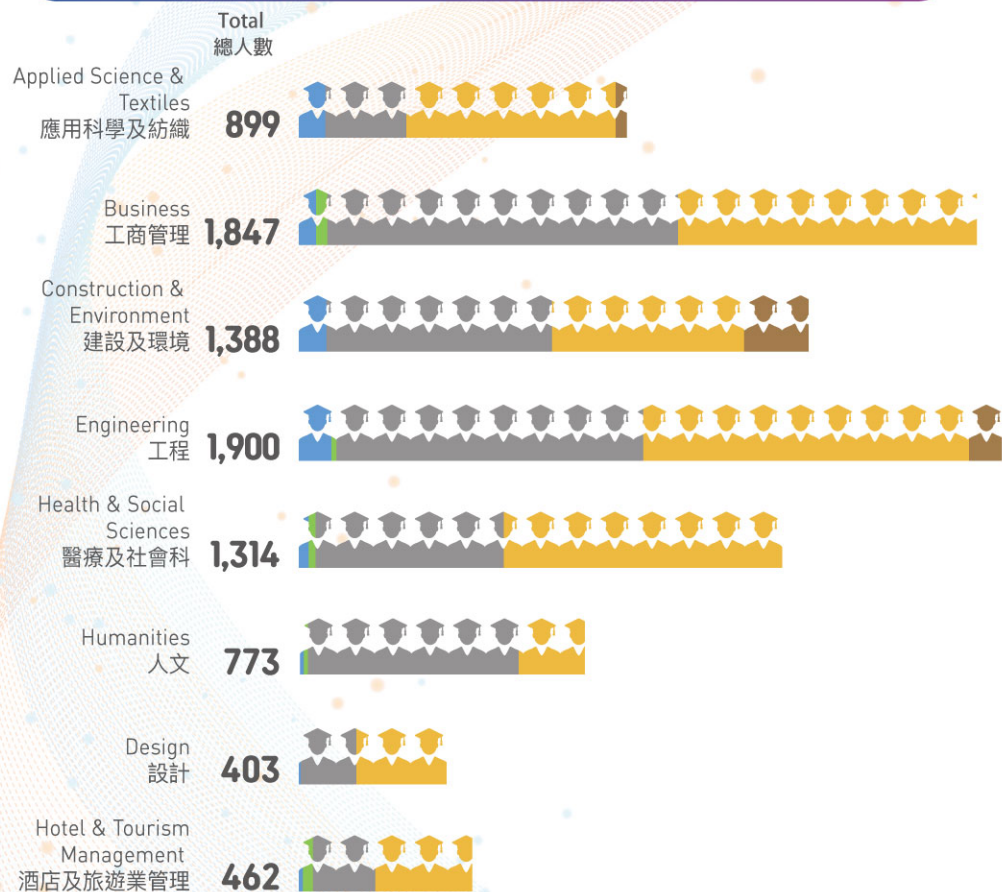


## GRADUATES

畢業生

**8,986**

Graduate Number by Faculty and Level of Study  
以學院及課程類別分類之畢業生人數



Research Postgraduate  
研究院研究課程  
**334**

Professional Doctorate  
專業博士  
**102**

Taught Postgraduate  
研究院修課課程  
**4,024**

Undergraduate  
學士學位課程  
**4,226**

Sub-degree  
副學位課程  
**300**

## EDUCATION 教育

- Nurturing future-ready global citizens  
培養敢於應對未來的世界公民
- Shaping socially responsible leaders of tomorrow  
塑造懷抱社會責任的未來領袖

As of % of full-time graduates responded to Graduate Employment Survey in 2019  
以佔回覆2019年度全日制課程畢業生就業概況調查人數比率計

### HIGHER DEGREE 高等學位



### FIRST DEGREE 學士學位



### SUB-DEGREE 非學位



# Including graduates emigrated/returned to country of origin and not seeking employment in Hong Kong.  
包括已移民/返回原居地及非在尋找工作之畢業生。



First Degree Graduates' Average Monthly Salary  
學士學位畢業生每月平均薪酬

**HKD 港元\$20,579**

### Alumni 校友

Cumulated Number  
of Alumni  
累積校友人數

**367,169**

Number of Alumni Associations,  
including Overseas Associations  
校友會數目，包括海外校友會

**48**



## RESEARCH AND INNOVATION

科研及創新

### PolyU's Strategic Research Domains



### Research Funding 科研撥款

HKD Million  
百萬港元 **\$962.5**

University Grants  
Committee Block  
Grants  
大學教育資助委員會  
整筆撥款

**\$299.9**

Research Grants  
Council General  
Research Funds  
研究資助局優配  
研究金

**\$95.4**

Other External  
Competitive  
Research Grants  
其他對外角逐撥款

**\$373.2**

Other Funds  
其他撥款

**\$194**

## RESEARCH 科研

### Research Facilities 研究設施

- Addressing societal needs  
應對社會所需
- Making positive impact on the world  
造福世界



**3** 所

### CHINESE ACADEMY OF SCIENCES - POLYU JOINT LABORATORIES 中國科學院與香港理工大學聯合實驗室

- Joint Laboratory for Aerosol and Environment  
氣溶膠與環境聯合實驗室
- CAS AMSS-PolyU Joint Laboratory of Applied  
Mathematics  
應用數學聯合實驗室
- CAS GIG-PolyU Joint Laboratory of the  
Guangdong-Hong Kong-Macao Greater Bay  
Area for the Environment  
粵港澳大灣區環境污染過程與控制聯合實驗室

**2** 所



### HONG KONG BRANCHES OF CHINESE NATIONAL ENGINEERING RESEARCH CENTRES 國家工程技術研究中心香港分中心

- Hong Kong Branch of National Engineering  
Research Centre for Steel Construction  
國家鋼結構工程技術研究中心香港分中心
- Hong Kong Branch of National Rail Transit  
Electrification and Automation Engineering  
Technology Research Centre  
國家軌道交通電氣化與自動化工程技術研究  
中心香港分中心



**2** 所

### STATE KEY LABORATORIES 國家重點實驗室

- State Key Laboratory of Chemical  
Biology and Drug Discovery  
(The Hong Kong Polytechnic University)  
化學生物學及藥物研發國家重點實驗室  
(香港理工大學)
- State Key Laboratory of Ultra-precision  
Machining Technology  
(The Hong Kong Polytechnic University)  
超精密加工技術國家重點實驗室  
(香港理工大學)

**3** 所



### RESEARCH INSTITUTES 研究所

- Research Institute for Smart Energy  
智慧能源研究院
- Research Institute for Sustainable  
Urban Development  
可持續城市發展研究院
- Smart Cities Research Institute  
智慧城市研究院



**6** 所

### UNIVERSITY RESEARCH FACILITIES 中心實驗室

**26** 所



### RESEARCH CENTRES 研究中心



## RAPID AUTOMATED MULTIPLEX DIAGNOSTIC SYSTEM FOR TESTING INFECTIOUS RESPIRATORY DISEASE

全球最全面診斷系統 快速檢測呼吸道傳染病

Infectious diseases represent an important portion of global public health concerns, in particular with regard to the global outbreak of novel coronavirus (SARS-CoV-2). The challenge of frontline diagnosis in hospitals, clinics and ports is that infectious diseases could exhibit similar symptoms or can be asymptomatic.

Professor Terence Lau, Interim Associate Vice President (Innovation and Technology Development) and Adjunct Professor at the Department of Applied Biology and Chemical Technology developed the world's most comprehensive automated multiplex diagnostic system which includes a fully automated machine and a multiplex full-screening panel for point-of-care genetic testing (POCT) of up to 40 infectious respiratory pathogens including the COVID-19 virus within an hour.

The System adopts patent-pending microfluidic and biochemical technologies that achieve ultra-sensitive detection and simultaneous differentiation of various pathogens with extremely high specificity. It is user-friendly which could relieve the challenge of frontline diagnostics in hospitals, clinics and ports with early and accurate detection of pathogens for effective and efficient disease control and management, and prevent spreading of contagious pathogens.

傳染病是全球公共衛生的關注重點，尤其目前新型冠状病毒（SARS-CoV-2）疫情在全球不斷擴散。由於患有呼吸道傳染病的病人，即使其感染的病原體不同，所呈現的病徵都十分相似，甚至沒有症狀，為在醫院、診所及口岸等進行前線診斷帶來挑戰。

暫任協理副校長（創新及技術發展）和應用生物及化學科技學系客座教授劉樂庭教授研究團隊研發的全自動快速多重診斷系統（下稱「該系統」），由全自動快速檢測儀和多重微流檢測元件組成，可用於即時基因檢測（Point-of-care genetic testing, POCT），區分出引起呼吸道疾病的病原體。該系統能夠在同一個測試中，於一小時內檢測出達40種病原體，包括2019新型冠状病毒。

系統採用的微流控和生化技術正在申請專利，可實現超靈敏的檢測，並能以極高的特异性同時區分各種病原體。該系統容易使用，及早和準確地檢測病原體能有效和快速地控制和管理疾病，確保有效的傳染病控制，減輕前線診斷的挑戰。

## RESEARCH 科研

- Addressing societal needs  
應對社會所需
- Making positive impact on the world  
造福世界

The project is led by PolyU Professor Terence Lau Lok-ting and supported by HKU Professor Yuen Kwok-yung. It was initially funded by the industry and now supported by the Government for public sector trial. More large-scale pilot production and mass production and optimizations are underway, and in collaboration with industry partner Avalon Biomedical Management Ltd, the commercialization is expected to be completed in the upcoming one to two years.

此項目的研究團隊由理大劉樂庭教授率領，並獲港大袁國勇教授支持。此研究項目初期獲得業界支持，現亦獲得政府資助予公營機構試用。其他大規模生產及項目優化計劃正與生物科技企業鎧耀生物醫藥科技(管理)有限公司合作進行，相信於未來一至兩年可推出作商業用途。



Prof. Terence Lau demonstrated the use of the automated diagnostic system



In one single test within an hour, the System can identify 30 to 40 pathogens including SARS-CoV-2 (virus causing COVID-19)



## ENABLING DRIVERS TO MAKE INFORMED ROUTE CHOICES THROUGH SMART 'REAL-TIME TRAFFIC INFORMATION' SOLUTIONS

智能實時交通資訊解決方案使駕駛者能做出明智的路線選擇

Traffic congestion is an ongoing problem in many densely populated cities in Asia such as Hong Kong. The development of Intelligent Transportation Systems (ITS) is one of the sustainable solutions to alleviate traffic congestion problem for improvement of road network performance. Ir Professor William H.K. Lam, Department of Civil and Environmental Engineering and his research team have developed innovative solution algorithms with use of limited traffic detector data from different sensor technologies for real-time estimation of the current travel times and traffic speeds on major urban roads in Hong Kong for helping drivers on their route choices. The current traffic information is now displayed and refreshed once every two minutes. With partnership of the Autotoll Limited, the solution algorithms have already been implemented in various ITS applications in Hong Kong.

Taking forward the "smart mobility" initiative outlined in the Hong Kong SAR Government's "Hong Kong Smart City Blueprint", the team is further working on a sophisticated solution method to help integrate different data from multiple sources, including real-time data from different traffic detectors and short-term traffic prediction results, with use of both advanced machine-learning algorithms and complex traffic simulation models, in order to further enhance the real-time traffic prediction on major roads in Hong Kong. It is expected that the predicted journey time information can be refreshed every minute. The new solution can provide reliable predicted traffic information to assist the public to better plan their journeys with route options or transport modes.

在亞洲許多人口稠密的城市，例如香港，交通擁堵是一個持續存在的問題。智能交通系統的開發是緩解交通擁堵問題，以改善路網性能的可持續解決方案之一。土木及環境工程學系林興強教授工程師率領團隊研發了創新的算法，使用來自不同傳感器技術的有限交通檢測器數據，實時估算香港主要道路的當前行車時間和交通速度，以幫助駕駛人士選擇路線。現時，實時交通資訊每兩分鐘更新一次。通過與快易通公司的合作，算法已在香港的智能交通系統中運行。

跟進香港特別行政區政府「香港智慧城市藍圖」中概述的「智能出行」建議，研究團隊現正研發一個精密的方案，以整合來自不同來源的數據，包括不同交通檢測器的實時數據和短期交通預測結果，並運用先進的機器學習算法和綜合交通模擬模型，進一步預測本港主要道路的實時交通情況。預期系統可每分鐘更新資訊一次。新方案可以提供可靠的交通預測資訊，以幫助大眾更有效地選擇行程路線或交通模式。

- Transforming research excellence into impactful applications  
轉化卓越科研為具影響力的應用方案
- Nurturing entrepreneurs to do well and do good  
培育「創富創善」企業家

## Impact to the Research Field and Society 對研究領域和社會的影響

The ITS solution algorithms developed by the team tackle challenging problems, such as different types of traffic sensor data and sample sizes, limited number of traffic sensors/detectors due to high installation cost and limited traffic data due to privacy issues, that cannot be met with commercial solutions. These solution algorithms have been adopted in Hong Kong for years, including the Journey Time Indication System and the Speed Map Panel of Transport Department of the Hong Kong SAR Government, helping drivers to make smart decision for their journeys. The real-time traffic information has also been broadcast, since 2017 on a local TV channel, providing a very valuable public resource.

團隊研發的智能交通系統方案可解決商業方案無法解決的挑戰性問題，例如不同類型的交通傳感器數據和樣本數目，由於安裝成本高而導致數量有限的交通傳感器/檢測器，以及由於隱私問題而導致可用的交通數據數量有限。這些方案已應用於本港多年，包括香港政府運輸署的「行車時間顯示系統」及「行車速度屏」，協助駕駛人士選定合適的路線。自2017年，實時交通資訊已在電視頻道上播出，為大眾提供了一個非常寶貴的公共資源。



The results estimated by the ITS algorithms are displayed on major roads in Hong Kong.

在香港主要道路上顯示的智能交通系統的估算結果。



- Transforming research excellence into impactful applications  
轉化卓越科研為具影響力的應用方案
- Nurturing entrepreneurs to do well and do good  
培育「創富創善」企業家

## ENTREPRENEURSHIP DEVELOPMENT

創業發展

Statistics & Achievements 統計數據與成就

Entrepreneurship Funding & Training 創業基金及教育

Number 數目



**START-UPS SUPPORTED**  
初創企業支援

**330**



**ENTREPRENEURS NURTURED**  
已培育之企業家人數

**1,010**



**TRAINING HOURS OFFERED**  
提供之培訓時數

**102,920**



**AWARDS**  
獎項

**220**



**FOLLOW-ON FUNDING / INVESTMENT**  
延續基金 / 投資

**HK\$430M**



**ACTIVELY OPERATING COMPANY**  
活躍營運之企業\*

**56%**

\*Counting those still operating 3 years after funding support.  
於取得基金後持續營運了3年或以上。

Patents 專利



**PATENT AND TRADEMARK APPLICATIONS**  
專利和商標申請

**135**



**PATENTS AND TRADEMARKS GRANTED**  
獲批專利和商標

**85**

- Embracing internationalisation for education and research  
推動教育與科研的國際化
- Championing Belt and Road and Greater Bay Area development initiatives  
推動「一帶一路」與「大灣區」發展的項目

## RANKINGS

排名

QS World University  
Rankings, 2021  
2021年度 QS  
世界大學排名

**75<sup>TH</sup>**

QS Asia University  
Rankings, 2021  
2021年度 QS  
亞洲大學排名

**25<sup>TH</sup>**

QS Top 50 Under 50  
Rankings, 2021  
2021年度 QS  
年輕大學排名

**6<sup>TH</sup>**

Hospitality & Leisure  
Management  
酒店與休閒  
管理學

**7<sup>TH</sup>**

Art & Design  
藝術與設計學

**15<sup>TH</sup>**

**45<sup>TH</sup>**

Linguistics  
語言學

**QS WORLD UNIVERSITY  
RANKINGS BY SUBJECT  
2020**  
2020年度QS世界大學  
學科排名

**19<sup>TH</sup>**

Civil &  
Structural  
Engineering  
土木與結構工程學

**31<sup>ST</sup>**

Nursing  
護理學

Architecture /  
Built  
Environment  
建築 / 環境建設

**22<sup>ND</sup>**

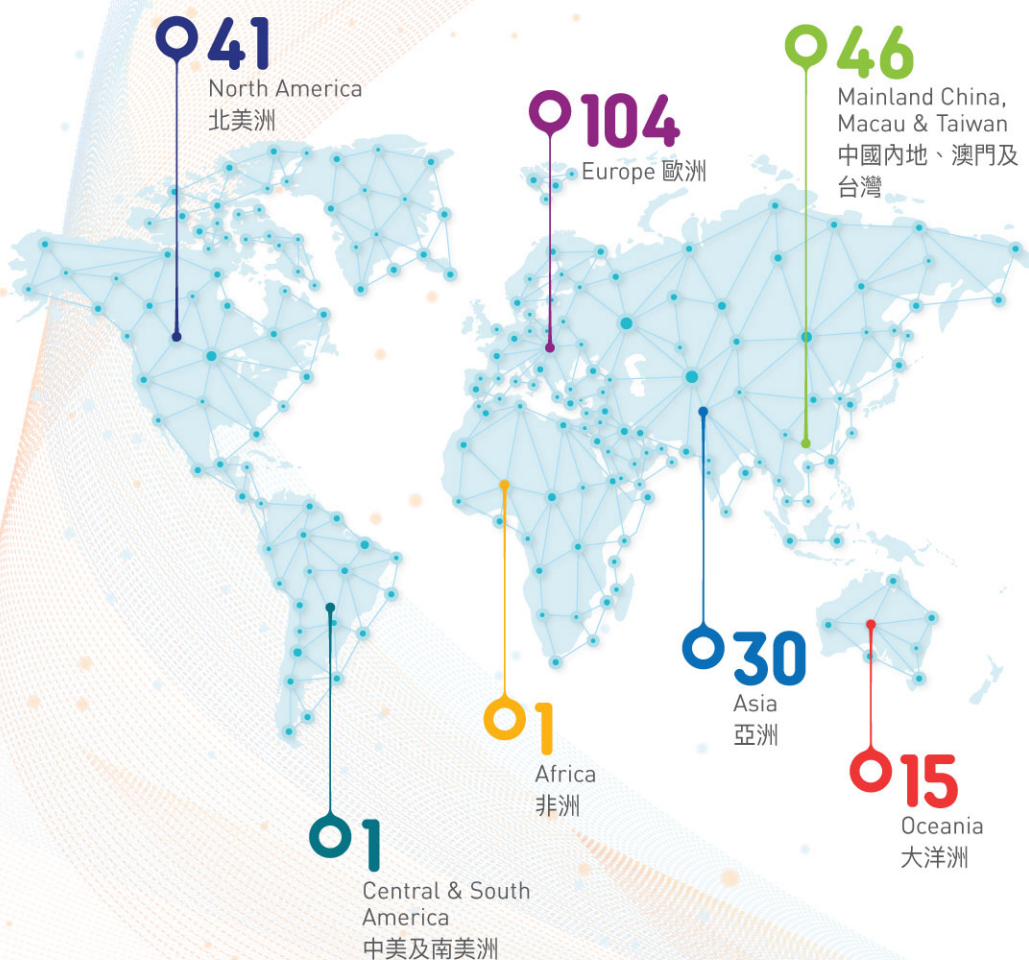


## GLOBAL CONNECTIONS

環球網絡

 **238**

Exchange Partners 學生交流計劃夥伴

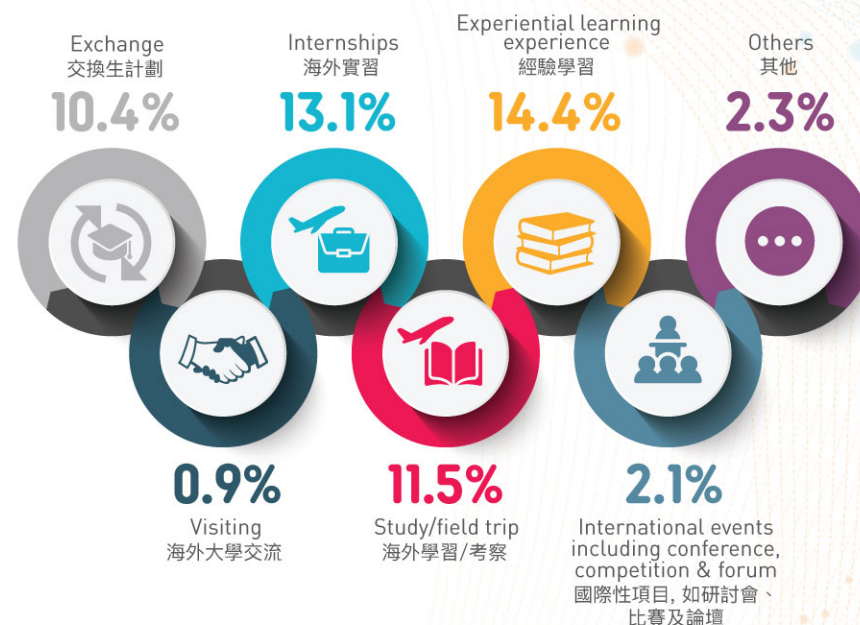


## INTERNATIONALISATION AND ENGAGEMENT WITH THE NATION 國際化及參與國家發展

- Embracing internationalisation for education and research  
推動教育與科研的國際化
- Championing Belt and Road and Greater Bay Area development initiatives  
推動「一帶一路」與「大灣區」發展的項目

Undergraduate Students with International Learning Experience  
有國際學習經驗的本科生

 **33.6%**



Number of Incoming Exchange Students  
海外學生來港交流人數

 **373**





## CAMPUS FACILITIES

校園設施

Library Collections and Facilities 圖書館館藏及設施

Total Library Holdings

全館收藏資料總數

5,769,886



Volumes in Library  
圖書總冊數

1,231,900



e-Books  
電子書籍

3,608,261



e-Journals (titles)  
電子期刊(種類)

172,538



e-Databases  
電子數據庫

456



Computer Files  
電腦檔案

9,305



Audio-visual Materials  
視聽資料

560,279



Microforms  
縮微複製資料

187,147



Study Spaces  
座位數目

3,964



## FINANCIAL HEALTH AND INSTITUTIONAL SUSTAINABILITY 財務健康與機構可持續性

- Boasting a robust governance structure  
維繫一個穩健完善的管治架構
- Enhancing infrastructure to foster development  
提升人才與基建質素以促進大學發展

IT Facilities 資訊科技設施



Buildings with Optical Fibre Connection  
光纖連接的建築物

100%

Internet Bandwidth 互聯網頻寬



International Maximum (shared)  
國際最高 (共享)

12,700 Mbps

International Guarantee (allocated)  
國際保證 (獨享)

2,531 Mbps

Local Maximum (shared)  
本地最高 (共享)

20 Gbps

Wi-Fi 無線網絡



Wi-Fi Coverage in Campus  
校園無線網絡覆蓋

100%

Wi-Fi Access Points in Campus  
校園無線接入點

2,400

Wi-Fi Access Points in Student Halls of Residence  
學生宿舍無線接入點

3,770

Wi-Fi Access Points outside Campus for PolyU users  
(via agreement with external service provider)  
為理大用戶提供的校外無線接入點  
(通過與服務供應商的協議)

> 20,000

Student Halls of Residence 學生宿舍

Student Hostel Places  
(Hung Hom)  
學生宿位  
(紅磡)

3,004



Student Hostel Places  
(Homantin)  
學生宿位  
(何文田)

1,650



# COLLEGE OF PROFESSIONAL AND CONTINUING EDUCATION

專業及持續教育學院



PolyU has established the College of Professional and Continuing Education (CPCE) to oversee the operation of two self-financed education units, namely Hong Kong Community College (HKCC) and School of Professional Education and Executive Development (SPEED).

理大設立了專業及持續教育學院，轄下教學單位包括香港專上學院及專業進修學院。

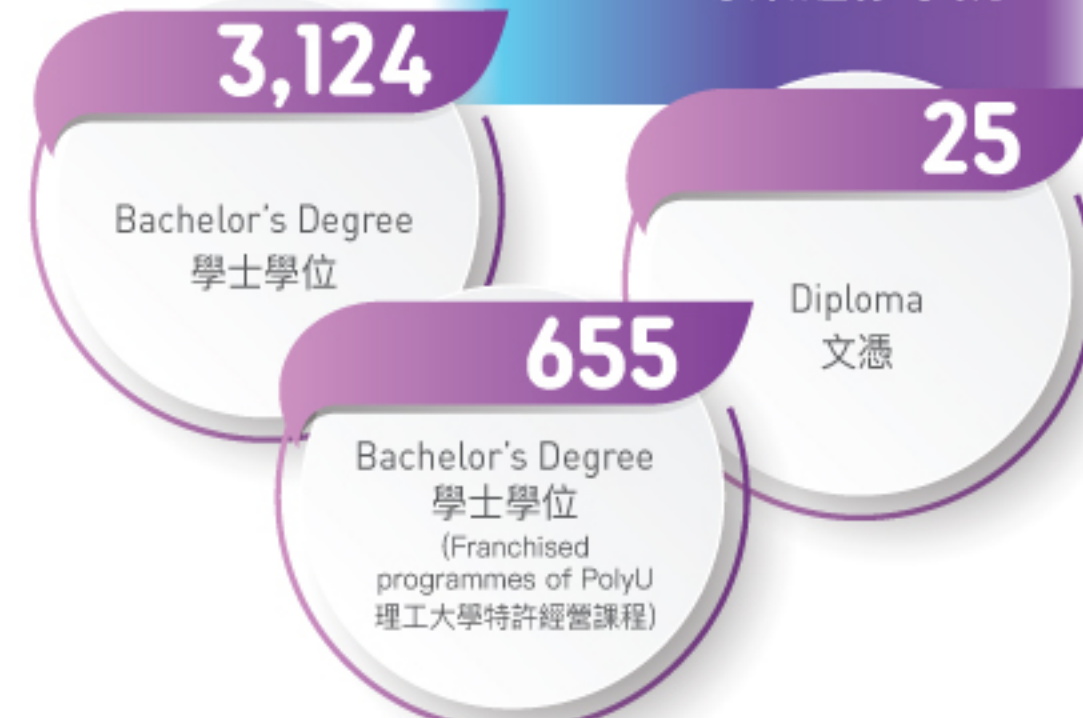
Total CPCE Student Enrolment 總學生人數

13,032

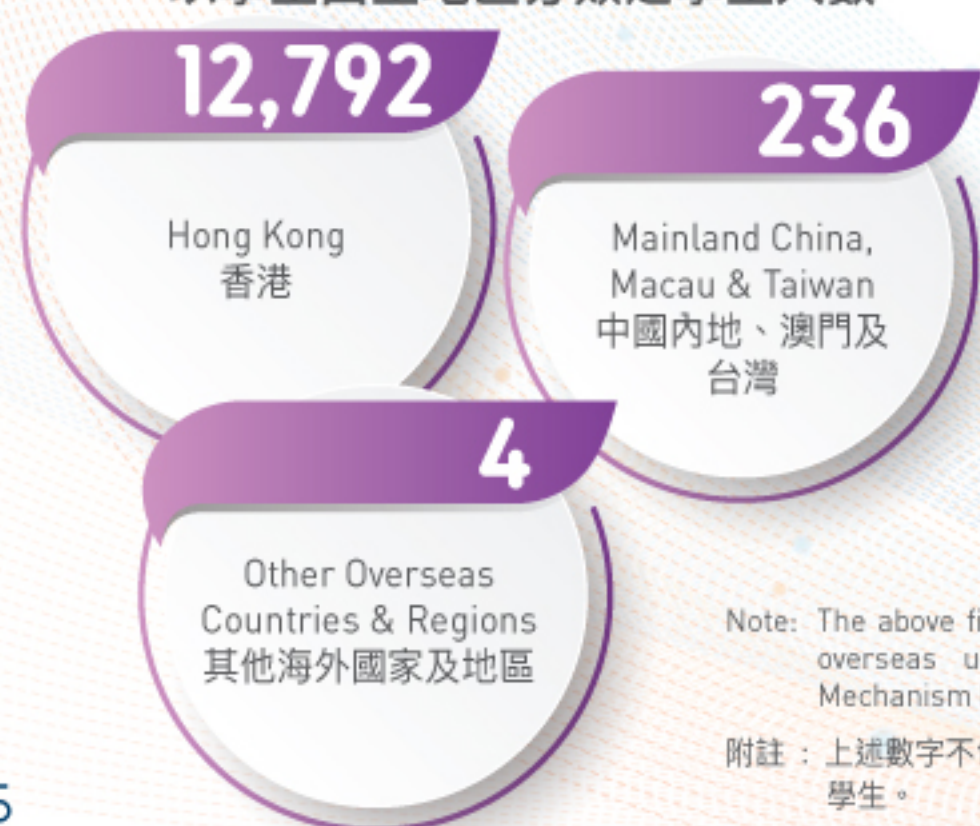
CPCE Student Enrolment by Programme Type  
以課程類別分類之學生人數

HKCC 香港專上學院

SPEED 專業進修學院



CPCE Student Enrolment by Place of Origin  
以學生出生地區分類之學生人數



CPCE Student Enrolment by Mode of Programme  
以修讀模式分類之學生人數



Note: The above figures do not include students enrolled on programmes leading to awards of overseas universities, credit bearing courses offered under Credit Accumulation Mechanism (CAM), and other non-credit bearing courses offered via SPEED.

附註：上述數字不包括就讀於專業進修學院與海外合辦之課程、學分累積制及非學分累積制課程的學生。

CPCE Full-time Staff 全職制職員

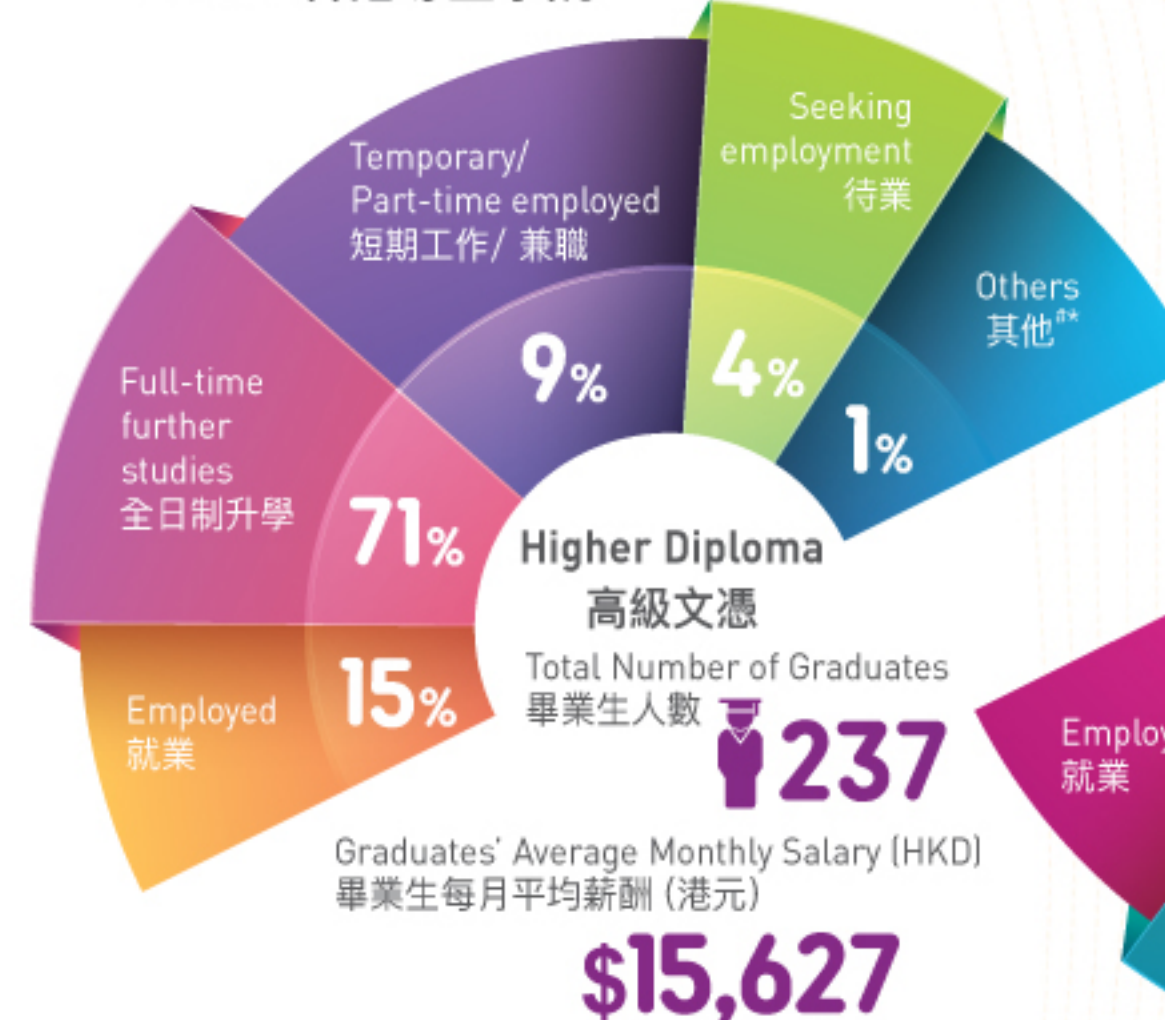
584

Teaching Staff 教學職員 303

Administrative/Support Staff 行政及支援職員 281

Graduates Articulation Overview 畢業生升學總覽

HKCC 香港專上學院



Total Number of Graduates 畢業生人數

3,097

Graduates' Average Monthly Salary (HKD) 畢業生每月平均薪酬 (港元)

\$12,469

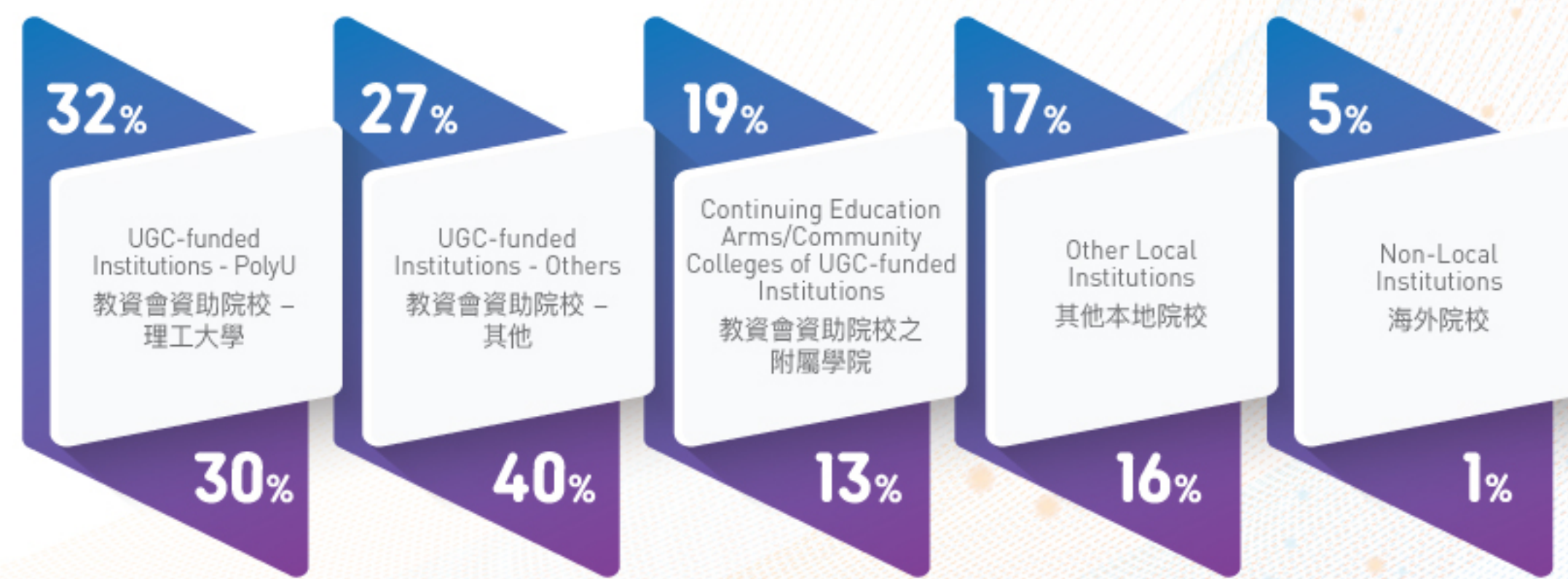
Associate Degree 副學士



# Including those pursuing further studies for programmes other than undergraduate level. 包括升讀學士學位以外課程。

\* Including 2 graduates pursued part-time degree studies. 包括兩位畢業生升讀兼讀學士學位課程。

Higher Diploma 高級文憑



Associate Degree 副學士