

2018/19 年度
香港理工大學主要統計數字

POLYU IN FIGURES 2018/19

CONTACT INFORMATION

聯絡資料

The Hong Kong Polytechnic University 香港理工大學
Hung Hom 紅磡
Kowloon 九龍
Hong Kong 香港

(852) 2766 5111

www.polyu.edu.hk

CAMPUS MAP

校園地圖



PolyU Main Campus
理大主要校園

PolyU Hung Hom Bay Campus and Facilities
理大紅磡灣校園及設施一覽

PolyU West Kowloon Campus and Facilities
理大西九龍校園及設施一覽



CONTENTS 內容

02 Introduction 簡介

03-04 Milestones 里程碑

Opening Minds • Shaping the Future 啟迪思維 • 成就未來

>> EDUCATION 教育

05-08 Faculties, Schools and Departments 學院及學系

09-10 PolyU Service-Learning 理大服務學習

11-12 Graduates 畢業生

>> RESEARCH 科研

13-14 Research and Innovation 科研及創新

15-16 SureFire: Smart Urban Resilience and Firefighting 智慧城市災害防控和火災應急研究

>> KNOWLEDGE TRANSFER AND WIDER ENGAGEMENT 知識轉移及廣泛參與

17-18 Spectacle Lens Retards Myopia Progression in Children 特製鏡片延緩兒童近視加深

19 Entrepreneurship Development 創業發展

>> INTERNATIONALISATION AND ENGAGEMENT WITH THE NATION

國際化及參與國家發展

20 Rankings 排名

21-22 Global Connections 環球網絡

>> FINANCIAL HEALTH AND INSTITUTIONAL SUSTAINABILITY

財務健康與機構可持續性

23-24 Campus Facilities 校園設施

25-26 College of Professional and Continuing Education

專業及持續教育學院

INTRODUCTION 簡介

Our Motto 校訓

To learn and to apply,
for the benefit of mankind.

開物成務 勵學利民

Our Vision 願景

Be a leading university that advances and transfers knowledge, and provides the best holistic education for the benefit of Hong Kong, the nation and the world.

矢志成為一所在開拓及轉移知識、提供優質全人教育方面均領先的大學，為香港、國家及世界作出貢獻。

Our Mission 使命

- To pursue impactful research that benefits the world.
致力富有影響、造福世界的研究。
- To nurture critical thinkers, effective communicators, innovative problem solvers and socially responsible global citizens.
培育敏於思辨、善於溝通、富於創見、精於解難，且勇於承擔社會責任的世界公民。
- To foster a University community in which all members can excel in their aspirations with a strong sense of belonging and pride.
營造讓員生志存高遠、心有歸屬、樂於以大學為榮的環境。



1937

Founding of the Government Trade School in Wanchai, the first government funded, post-secondary technical school in Hong Kong.
香港官立高級工業學院正式成立，校舍位於灣仔，是全港第一所政府資助的專上程度工業學院。

The School was renamed the Hong Kong Technical College after World War II.
第二次世界大戰後學院改名為香港工業專門學院（工專）。

1947



1957

The Hong Kong Technical College moved to its new premises in Hung Hom.
工專遷往紅磡的新校舍。

The Hong Kong Polytechnic (the Polytechnic) was formally established, taking over the campus of the Hong Kong Technical College.
香港理工學院（理工）正式成立，並接管工專的校舍。

1972



1994

Legislation was enacted to change the name of the Institution to "The Hong Kong Polytechnic University". Self-accreditation status was granted by the Government.
有關理工正名大學之修訂法案正式生效，理工正名為「香港理工大學」（理大），並獲政府頒授自我評審資格。



2000

Inauguration of the Institute for Enterprise (IfE) to provide professional services for business and industry on a self-financed basis.
企業發展院成立，為工商界提供自負盈虧式的專業服務。

Establishment of the School of Professional Education and Executive Development (SPEED) to foster lifelong education.
成立專業進修學院，致力促進終身學習。

1999

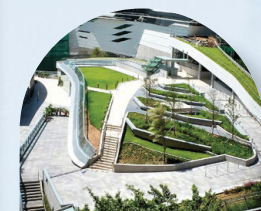


2011

Hotel ICON, a teaching and research hotel wholly-owned by PolyU, was officially opened.
理大全資擁有的教研酒店唯港薈正式開幕。

Set up of Hong Kong Community College (HKCC) to offer an expanded range of Associate Degree programmes.
成立香港專上學院，提供多個範疇的副學士學位課程。

2001

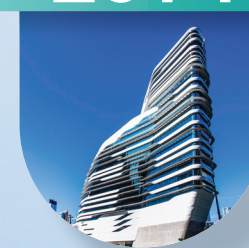


2017

Redevelopment of Block X completed.
X座重建項目竣工。

Official opening of Jockey Club Innovation Tower.
賽馬會創新樓正式開幕。

2014

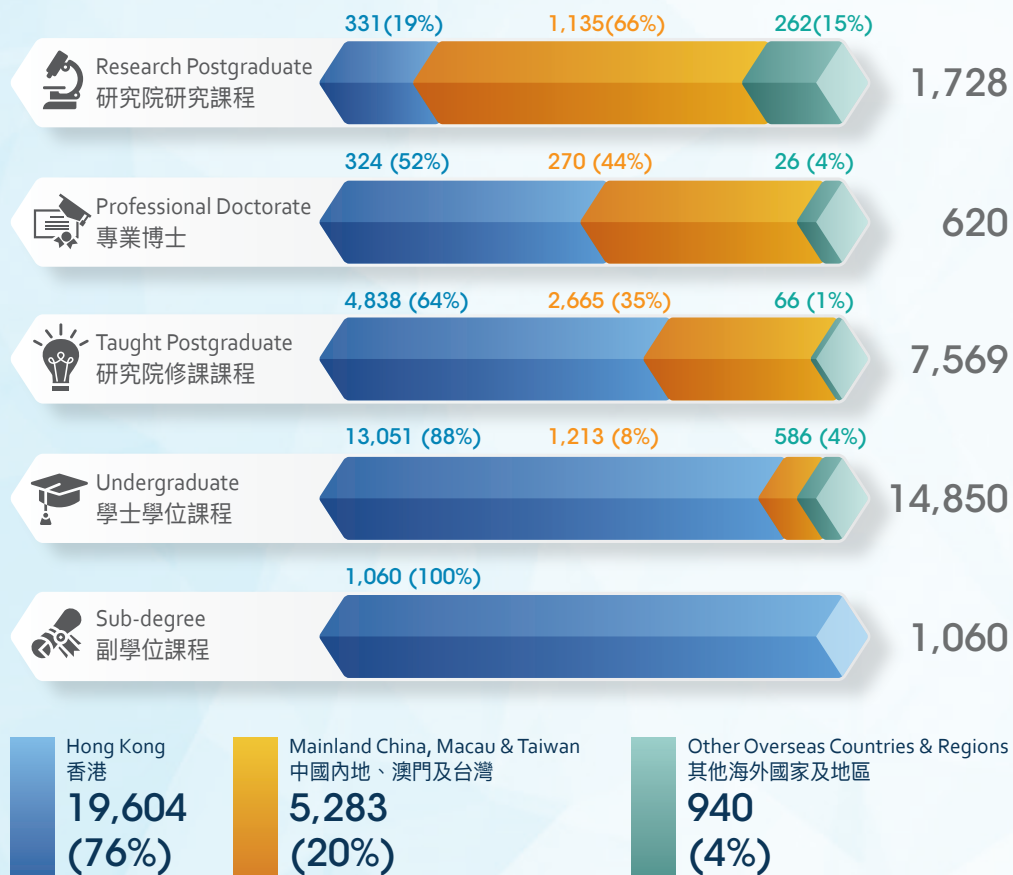


STUDENTS 學生

Total Student
Enrolment
總學生人數

25,827

Student Enrolment by Level of Study and Place of Origin 以課程類別及學生出生地區分類之學生人數



Student Enrolment by Mode of Programme 以修讀模式分類之學生人數

Full-time
全日制 20,462

Part-time
兼讀制 5,365

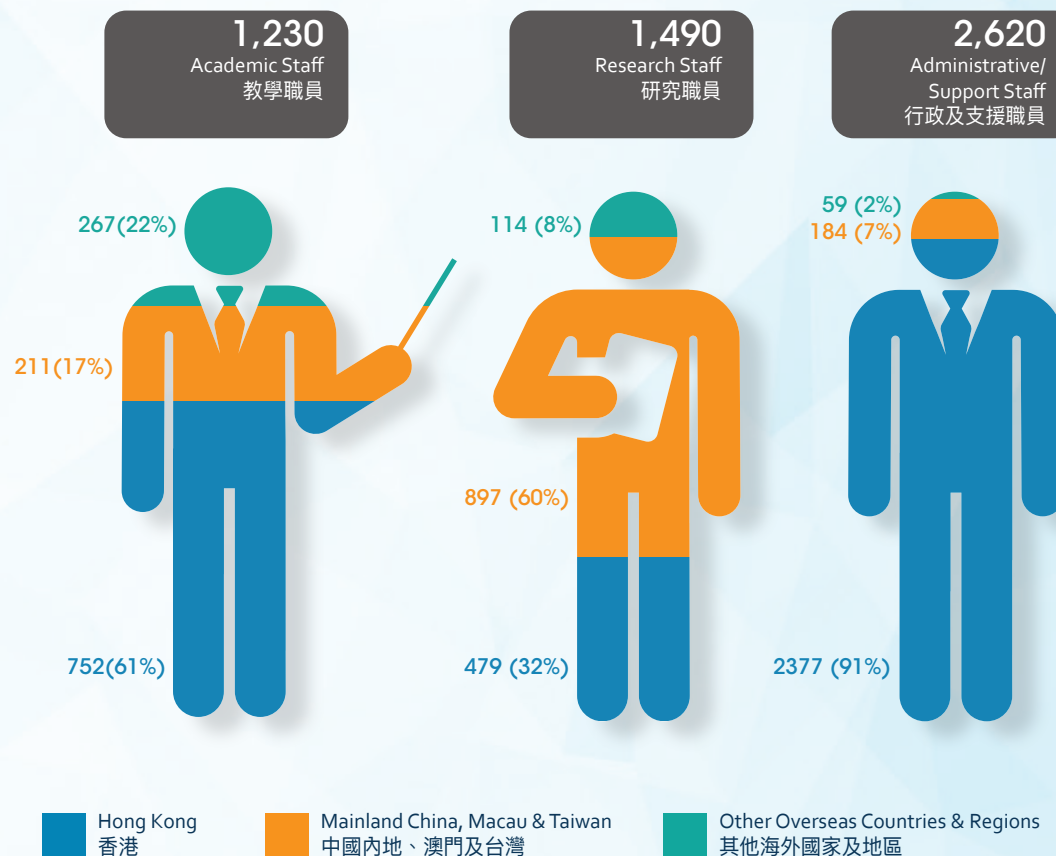
Education 教育

- Nurturing future-ready global citizens
培養敢於應對未來的世界公民
- Shaping socially responsible leaders of tomorrow
塑造懷抱社會責任的未來領袖

STAFF 職員

Full-time Staff
全職制職員

5,340



Part-time Staff
兼職制職員

929

POLYU SERVICE-LEARNING 理大服務學習

PolyU has been dedicated to cultivating responsible global citizens. Since the 2012/13 academic year, PolyU has incorporated service-learning into its new curriculum as a mandatory subject.

Within seven years, service-learning (SL) has developed rapidly in PolyU, yielding remarkable and encouraging achievements. By the end of the 2018/19 academic year, over 20,000 students have attended SL courses, serving over 822,000 hours.

理大一直致力培育學生成為負責任的世界公民，自2012/13學年起，理大將服務學習納入新本科課程，成為必修科目。短短七年間，理大服務學習發展迅速，成績顯著，成果令人鼓舞。截至2018/19學年，已累積超過20,000名四年制本科生修讀服務學習課程，服務時數超過822,000小時。



No. of Undergraduate
Students Enrolled
in SL
修讀服務學習的
本科生人數

3,962



No. of
Service Hours
服務時數

158,480



No. of SL
Subject-offerings
開辦的服務學習
科目數目

69



Service Location
服務地點

No. of Students
Serving in
參與服務學習的
學生人數

Hong Kong
香港

2,943

Chinese Mainland
and Taiwan
中國內地及台灣

632

Overseas
海外

387

- Nurturing future-ready global citizens
培養敢於應對未來的世界公民
- Shaping socially responsible leaders of tomorrow
塑造懷抱社會責任的未來領袖

INTERNATIONAL SERVICE-LEARNING

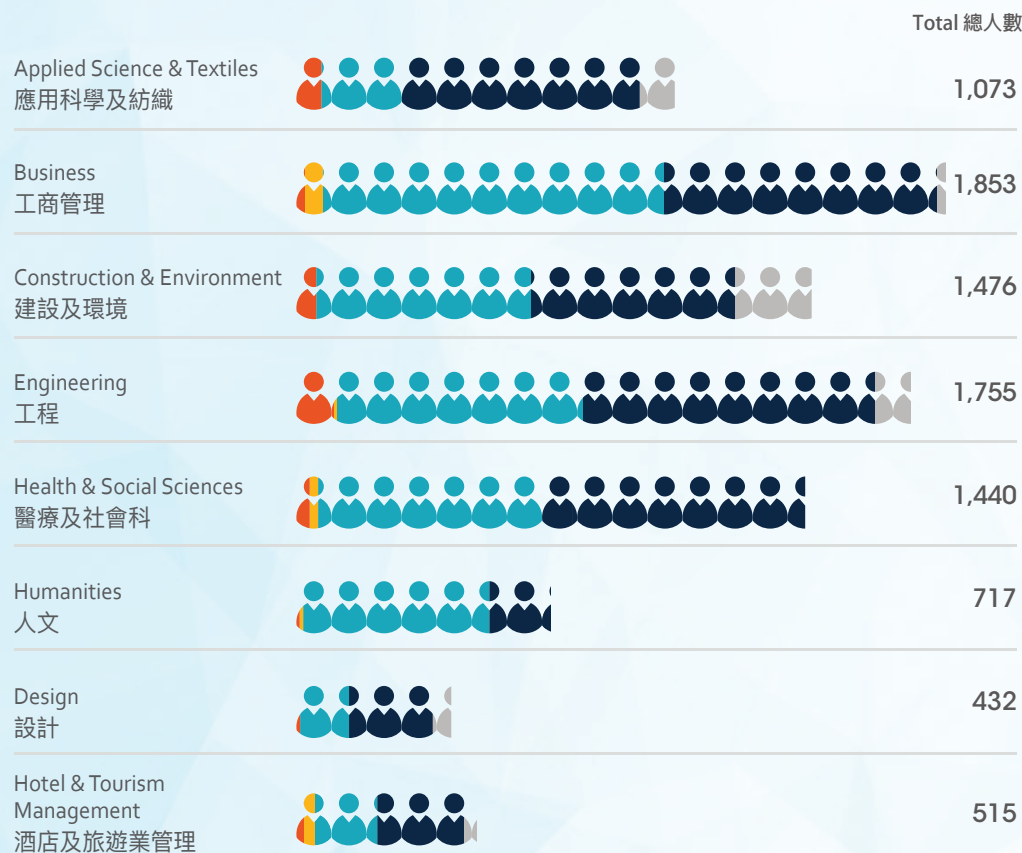
海外的服務學習



GRADUATES 畢業生

Graduate Number by Faculty and Level of Study
以學院及課程類別分類之畢業生人數

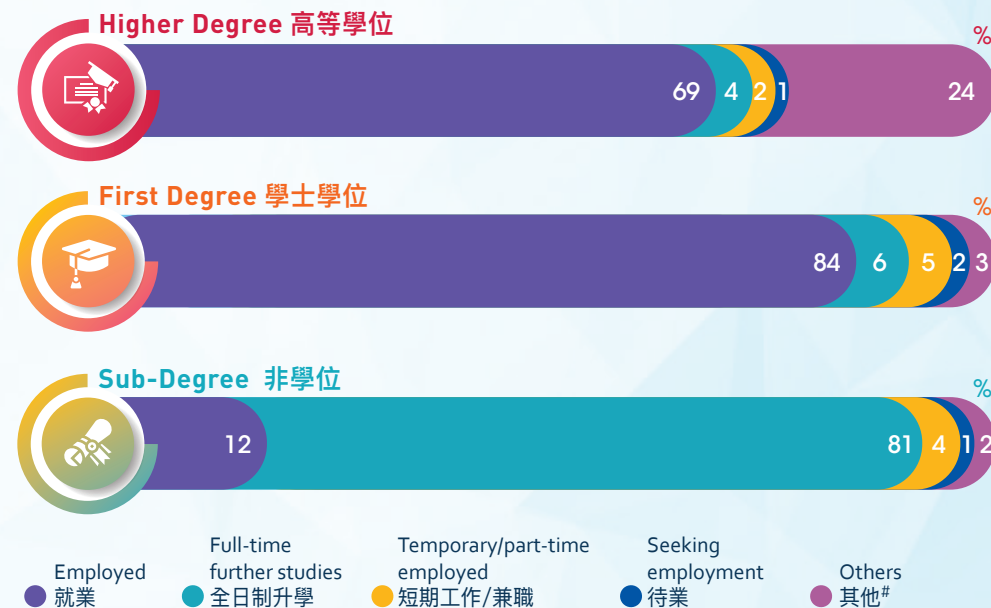
 9,261



Education 教育

- Nurturing future-ready global citizens
培養敢於應對未來的世界公民
- Shaping socially responsible leaders of tomorrow
塑造懷抱社會責任的未來領袖

As of % of full-time graduates responded to Graduate Employment Survey in 2018
以佔回覆2018年度全日制課程畢業生就業概況調查人數比率計



[#] Including graduates emigrated/returned to country of origin and not seeking employment in Hong Kong.
包括已移民/返回原居地及非在尋找工作之畢業生。



First Degree Graduates' Average Monthly Salary
學士學位畢業生每月平均薪酬

HKD
港元 \$20,166

Alumni 校友

Cumulated Number of Alumni
累積校友人數

 364,000

Number of Alumni Associations, including Overseas Associations
校友會數目，包括海外校友會

 47

RESEARCH AND INNOVATION 科研及創新

PolyU's Strategic Research Domains



Research Funding 科研撥款

HKD Million
百萬港元

\$846.0

University Grants Committee Block Grants
大學教育資助委員會整筆撥款

\$316.2

Research Grants Council General Research Funds
研究資助局優配研究金

\$90.0

Other External Competitive Research Grants
其他對外角逐撥款

\$344.3

Other Funds
其他撥款

\$95.5

Research 科研

- Addressing societal needs
應對社會所需
- Making positive impact on the world
造福世界

Research Facilities 研究設施

3所

Chinese Academy of Sciences - PolyU Joint Laboratories 中國科學院與香港理工大學聯合實驗室

- Joint Laboratory for Aerosol and Environment
氣溶膠與環境聯合實驗室
- CAS AMSS-PolyU Joint Laboratory of Applied Mathematics
應用數學聯合實驗室
- GIG-PolyU Hong Kong Joint Laboratory on Environmental Pollution Process and Control
粵港澳大灣區環境污染過程與控制聯合實驗室



2所

Hong Kong Branches of Chinese National Engineering Research Centres 國家工程技術研究中心香港分中心

- Hong Kong Branch of National Engineering Research Centre for Steel Construction
國家鋼結構工程技術研究中心香港分中心
- Hong Kong Branch of National Rail Transit Electrification and Automation Engineering Technology Research Centre
國家軌道交通電氣化與自動化工程技術研究中心香港分中心



2所

State Key Laboratories 國家重點實驗室

- State Key Laboratory of Chemical Biology and Drug Discovery (The Hong Kong Polytechnic University)
化學生物學及藥物研發國家重點實驗室 (香港理工大學)
- State Key Laboratory of Ultra-precision Machining Technology (The Hong Kong Polytechnic University)
超精密加工技術國家重點實驗室 (香港理工大學)

6所

University Research Facilities 研究中心實驗室



1所

Research Institute 研究所

Research Institute for Sustainable Urban Development
可持續城市發展研究院



29所

Research Centres 研究中心



For more information on our research facilities, please scan this QR Code.

如欲了解本校所有研究設施，請掃描此二維碼。

SUREFIRE: SMART URBAN RESILIENCE AND FIREFIGHTING

智慧城市災害防控和火災應急研究

Abstract 摘要

The Guangdong-Hong Kong-Macao Greater Bay area has an urban environment of the high-density population that is inherently more sustainable and ideally suits smart city technologies. Increasing numbers of fires in tall buildings around the world have shown that the evolution of the built environment has changed the nature of the threat from fire. Urban environments are exposed to greater risk as prescriptive fire safety strategies are no longer fit for purpose. Firefighters are left facing an unpredictable hazard, that they are neither trained nor equipped to deal with, as the London Grenfell Tower fire in 2017 tragically demonstrated. On top of the human cost, costs due to losses from fire are estimated at approximately 1 per cent of global GDP per year. Therefore, while sustainability is paramount, a society's resilience to disasters should also be a critical consideration in sustainable urban development.

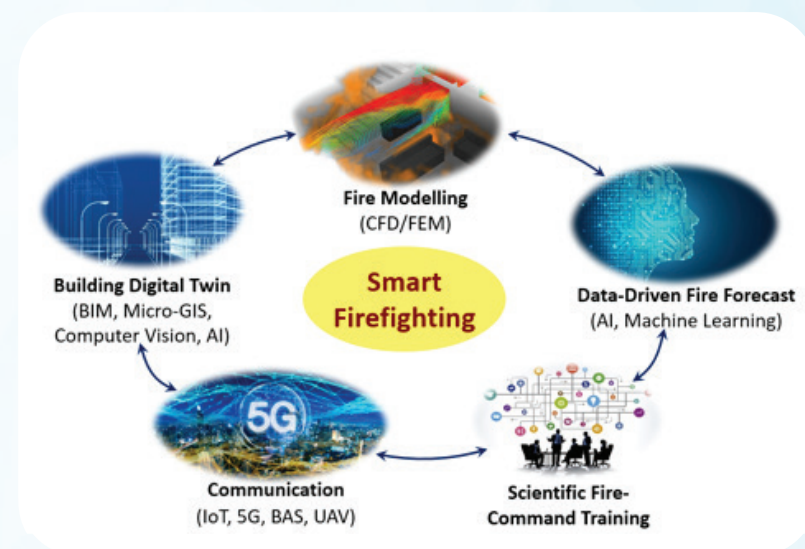
粵港澳大灣區是全球人口密度最高的城市群，非常適合採用智慧城市技術來促進其可持續發展。然而，全球高層建築物的火災頻頻發生，使這類高密度城市在居住環境的安全性、可持續發展和應對災害的彈性方面面臨全新的挑戰。2017年倫敦格倫費爾塔大火揭示了市民和消防員正在面對前所未有的重大火災和無法預測的風險。與此同時，全球每年因火災造成的經濟損失高達生產總值的1%。因此，有效的災害防控和應急管理與城市的可持續發展息息相關。

- Addressing societal needs
應對社會所需
- Making positive impact on the world
造福世界

Impact to the research field, society and economy 對研究領域、社會和經濟的影響

This project will develop the first smart firefighting system in the world that has the capability of fire evolution forecasting for buildings and urban infrastructure and provide vital information to support fire incident commanders in directing emergency crews. As a critical component of smart city, SureFire-based firefighting system may significantly reduce injury in fire accidents and save billions in costs and economic losses owing to fire in Hong Kong. Adoption of SureFire technology in a follow-up implementation project can substantially diminish the current cost of fire at 1% of global GDP. Upon deployment of the SureFire system, Hong Kong will demonstrate sustainable urban development and resilience in practice and will pioneer the guiding standards for smart megacities of the Guangdong-Hong Kong-Macao Greater Bay area and the other parts of the world.

本項目將開發全球首個可實時預測城市建築和基礎設施火災演變的智慧消防系統，為消防行動和應急人員提供重要資訊。該智慧消防系統是智慧城市的重要組成部分，將大大減少火災中的人員傷亡，並將為香港每年節省數十億美元因火災造成的經濟損失。未來該智慧消防技術也可以明顯降低目前佔全球本地生產總值1%的火災損失。隨著該智慧消防系統的部署，香港將實現城市的可持續發展和應對災害的彈性，並將引領粵港澳大灣區和全球智慧超大城市的發展和標準的制定。



SPECTACLE LENS RETARDS MYOPIA PROGRESSION IN CHILDREN

特製鏡片延緩兒童近視加深



Myopia is the major cause of ocular morbidity and becomes increasingly prevalent globally. To address this global public health issue, Prof. Chi-ho To and Prof. Carly Lam of The Centre for Myopia Research, School of Optometry, co-developed the **Defocus Incorporated Multiple Segments (DIMS) Spectacle Lens**, with Hoya Corporation, for retarding myopic progression in children.

近視是導致視覺功能下降的主因之一，此情況在全球愈趨普遍。針對此全球公共衛生問題，眼科視光學院近視研究中心的杜嗣河教授和林小燕教授率領研究小組，與豪雅光學共同研發「多區正向光學離焦」（DIMS）眼鏡片，透過控制兒童眼球過度生長，改善近視。

The DIMS lens comprises of a central optical zone for correcting refractive error and multi-segments of constant myopic defocus micro lenses surrounding the central zone extending to the mid-periphery of the lens. It provides clear vision and myopic defocus for vision correction simultaneously for the wearer at all viewing distances. In doing so, the lens makes use of the natural homeostatic mechanism known as 'emmetropization', whereby the eyeball adapts and shapes to receive focused images as it does for normal vision.

DIMS 眼鏡片由一個用來矯正屈光不正的中心光學區，以及圍繞中心區伸延至鏡片周邊的「多區持續近視離焦」微形鏡片組成。佩戴者觀看不同距離的景物時，DIMS眼鏡片可同時提供清晰的視力及近視離焦，以矯正視力。過程中鏡片利用眼睛的自然回饋機制——「正視化現象」，使眼球適應和生長成以最接近正常視力聚焦影像的大小。

In the two-year randomized double-blinded clinical trial, DIMS lens has proven to slow down myopia progression in children by 60%, and 21.5% of the subjects experienced no increase in myopia at all during the trial period.

DIMS 眼鏡片在為期兩年的隨機雙盲臨床實驗中，證實能減慢參與研究兒童的近視加深速度達60%，21.5%兒童的近視更是零增加。

- Transforming research excellence into impactful applications
轉化卓越科研為具影響力的應用方案
- Nurturing entrepreneurs to do well and do good
培育「創富創善」企業家

PolyU Innovation Makes Global Impacts 理大發明影響深遠

The team's effort was internationally recognized. The DIMS lens won the Grand Prize (Overall Championship), Grand Award and Gold Medal with the Congratulations of Jury at the 46th International Exhibition of Inventions of Geneva. Apart from Hong Kong, the novel device is highly relevant to many Asian regions, such as Singapore, Malaysia, Korea and mainland China, where the prevalence of myopia is significantly high. Since the launch of the DIMS Lens onto the market in 2018, positive feedback on the effectiveness and significant demand from these regions were received.

研究團隊的努力獲國際肯定；DIMS 眼鏡片在瑞士日內瓦舉行的第四十六屆國際發明展中，勇奪全場總冠軍、特別大獎及評判特別嘉許金獎。除了香港以外，此項發明尤對近視率偏高的亞洲地區影響深遠，如新加坡、馬來西亞、韓國及中國內地等。鏡片自2018年推出市場後，一直備受歡迎並獲佩戴者肯定其效用。



DIMS Spectacle Lens comprises of a central optical zone and multi-segments of constant myopic defocus micro lenses.

「多區正向光學離焦」眼鏡片由中心光學區及多個近視離焦微型鏡片組成。



DIMS Spectacle Lens designed by Prof. Carly Lam (left) and Prof. Chi-ho To (right) won three prizes at the 46th International Exhibition of Inventions of Geneva.

林小燕教授（左）和杜嗣河教授（右）設計的「多區正向光學離焦」眼鏡片，在瑞士日內瓦第四十六屆國際發明展中贏得三項大獎。

- Transforming research excellence into impactful applications
轉化卓越科研為具影響力的應用方案
- Nurturing entrepreneurs to do well and do good
培育「創富創善」企業家

ENTREPRENEURSHIP DEVELOPMENT

創業發展

Statistics & Achievements 統計數據與成就

Entrepreneurship Funding & Training 創業基金及教育

Number (ca.) 數目(約)



Start-ups Supported
初創企業支援

270



Entrepreneurs Nurtured
已培育之企業家人數

800



Training Hours Offered
提供之培訓時數

97,400



Awards
獎項

190



Follow-on Funding / Investment
延續基金 / 投資

HK\$370M



Actively Operating Company
活躍營運之企業*

61%

*Counting those still operating 3 years after funding support.
於取得基金後持續營運了3年或以上。

Patents 專利



Patents and Trademarks Filed
商標及專利申請

135



Patents and Trademarks Granted
商標註冊及專利發明

58

- Embracing internationalisation for education and research
推動教育與科研的國際化
- Championing Belt and Road and Greater Bay Area development initiatives
推動「一帶一路」與「大灣區」發展的项目

RANKINGS 排名

QS Top 50 Under 50
Rankings 2020
2020年度 QS 年輕
大學排名

8th

QS Asia University
Rankings 2020
2020年度 QS 亞洲
大學排名

25th

QS World University
Rankings 2020
2020年度 QS 世界
大學排名

91st



GLOBAL CONNECTIONS

環球網絡

Exchange Partners 學生交流計劃夥伴

 251



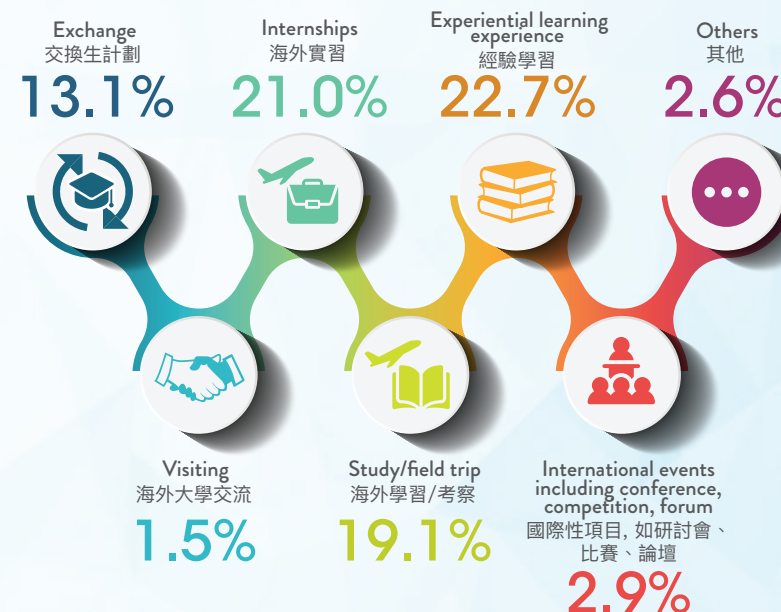
Internationalisation and Engagement with the Nation

國際化及參與國家發展

- Embracing internationalisation for education and research
推動教育與科研的國際化
- Championing Belt and Road and Greater Bay Area development initiatives
推動「一帶一路」與「大灣區」發展的項目

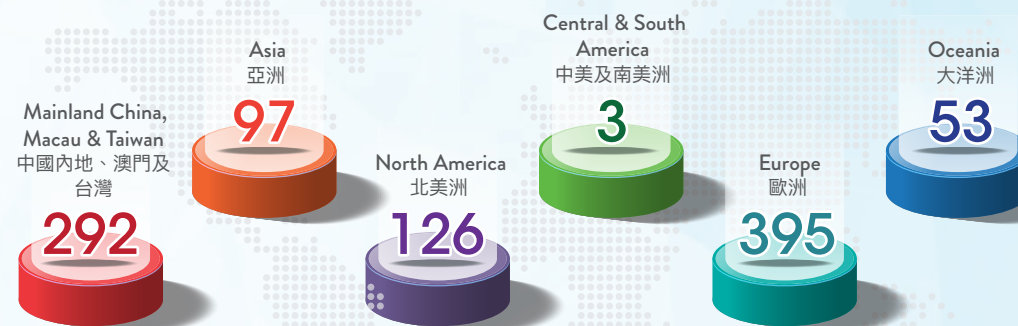
Undergraduate Students with International Learning Experience
有國際學習經驗的本科生

 50.3%



Number of Incoming Exchange Students
海外學生來港交流人數

 966



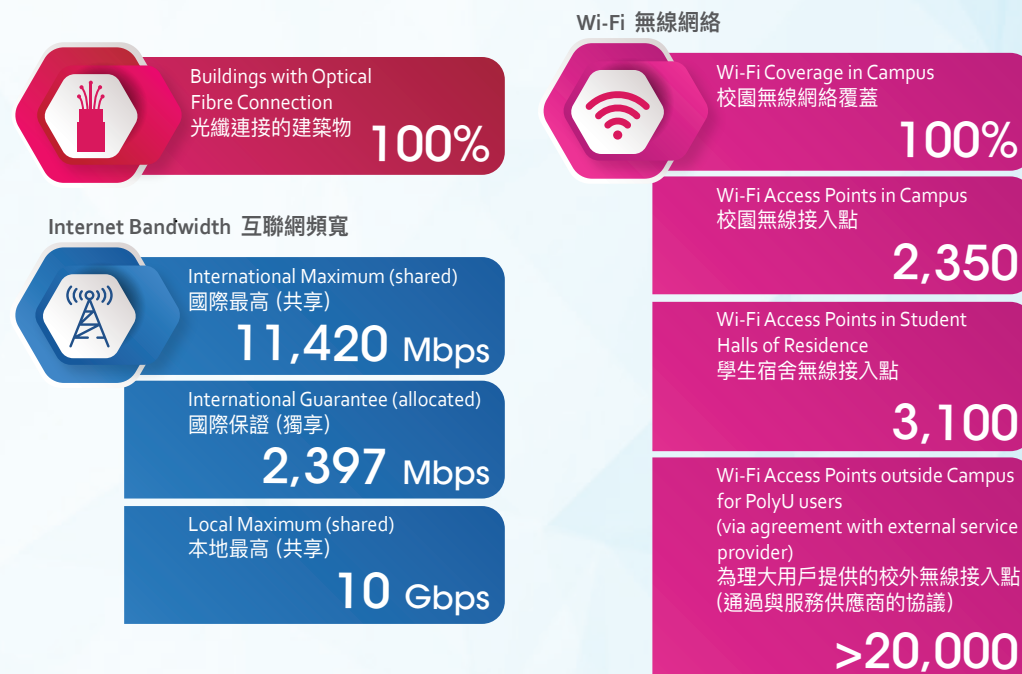
CAMPUS FACILITIES 校園設施

Library Collections and Facilities 圖書館館藏及設施



- Boasting a robust governance structure
維繫一個穩健完善的管治架構
- Enhancing infrastructure to foster development
提升人才與基建質素以促進大學發展

IT Facilities 資訊科技設施



Student Halls of Residence 學生宿舍



COLLEGE OF PROFESSIONAL AND CONTINUING EDUCATION

專業及持續教育學院



PolyU has established the College of Professional and Continuing Education (CPCE) to oversee the operation of two self-financed education units, namely Hong Kong Community College (HKCC) and School of Professional Education and Executive Development (SPEED).

理大設立了專業及持續教育學院，轄下教學單位包括香港專上學院及專業進修學院。

Total CPCE Student Enrolment 總學生人數

13,901

CPCE Student Enrolment by Programme Type
以課程類別分類之學生人數

HKCC 香港專上學院

Higher Diploma
高級文憑

679

Associate Degree
副學士

8,754

SPEED 專業進修學院

Bachelor's Degree
學士學位

2,998

Bachelor's Degree
學士學位
(Franchised programmes of
PolyU理工大學特許經營課程)

1,470

CPCE Student Enrolment by Place of Origin
以學生出生地區分類之學生人數

Hong Kong
香港

13,749

Mainland China,
Macau & Taiwan
中國內地、澳門及台灣

148

Other Overseas
Countries & Regions
其他海外國家及地區

4

CPCE Student Enrolment by Mode of
Programme
以修讀模式分類之學生人數

Full-time
全日制

12,075

Part-time
兼讀制

1,826

Note: The above figures do not include students enrolled on programmes leading to awards of overseas universities, credit bearing courses offered under Credit Accumulation Mechanism (CAM), and other non-credit bearing courses offered via SPEED.

附註：上述數字不包括就讀於專業進修學院與海外合辦之課程、學分累積制及非學分累積制課程的學生。

CPCE Full-time Staff 全職制職員

566

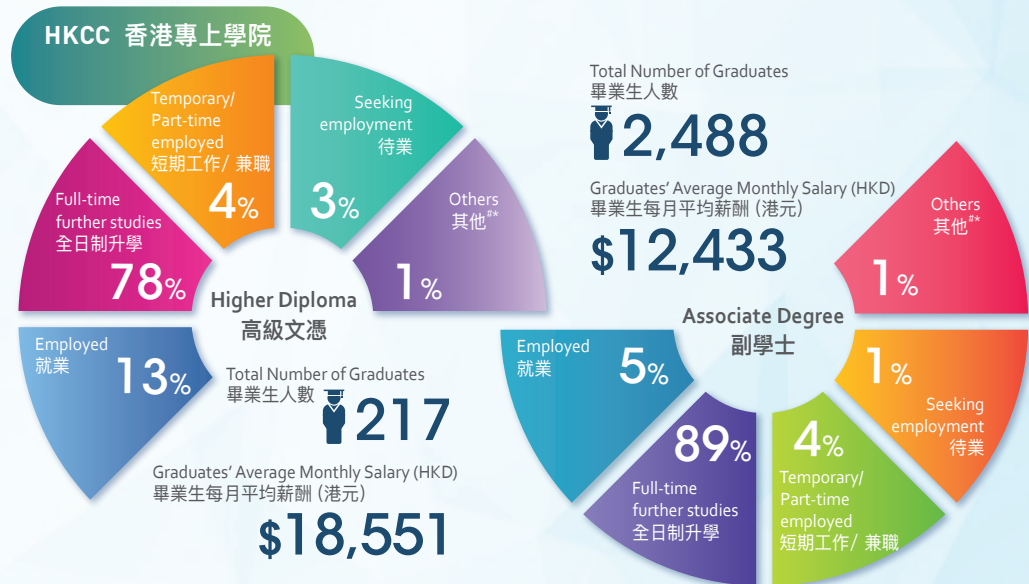
Teaching Staff
教學職員

293

Administrative/Support Staff
行政及支援職員

273

Graduates Articulation Overview 畢業生升學總覽



* Including those pursuing further studies for programmes other than undergraduate level.
包括升讀學士學位以外課程。

* Including 7 graduates pursued part-time degree studies.
包括七位畢業生升讀兼讀學士學位課程。

