

POLYU IN FIGURES 2017/18

香港理工大學
主要統計數字

CONTACT INFORMATION 聯絡資料

The Hong Kong Polytechnic University 香港理工大學
Hung Hom 紅磡
Kowloon 九龍
Hong Kong 香港

Tel 電話 : (852) 2766 5111

Website 網址 : www.polyu.edu.hk



CAMPUS MAP 校園地圖

PolyU Main Campus 理大主要校園

PolyU Hung Hom Bay Campus and Facilities
理大紅磡灣校園及設施一覽

PolyU West Kowloon Campus and Facilities
理大西九龍校園及設施一覽

Compiled by Institutional Research and Planning Office 大學策劃處編製
December 2018 二零一八年十二月



Opening Minds • Shaping the Future
啟迪思維 • 成就未來

CONTENTS 內容

INTRODUCTION	簡介	02-05
RANKINGS	排名	06
FACULTIES, SCHOOLS AND DEPARTMENTS	學院及學系	07-09
GLOBAL CONNECTIONS	環球網絡	10-12
GRADUATES	畢業生	13
RESEARCH AND INNOVATION	科研及創新	14-17
KNOWLEDGE TRANSFER	知識轉移	18
CAMPUS FACILITIES	校園設施	19
COLLEGE OF PROFESSIONAL AND CONTINUING EDUCATION	專業及持續教育學院	20-22

INTRODUCTION 簡介

Our Motto 校訓

To learn and to apply,
for the benefit of mankind.
開物成務 勵學利民

Our Vision 願景

Be a leading university that
advances and transfers knowledge,
and provides the best holistic education
for the benefit of Hong Kong,
the nation and the world.
矢志成為一所在開拓及轉移知識、
提供優質全人教育方面均領先的大學，
為香港、國家及世界作出貢獻。

Our Mission 使命

1. To pursue impactful research that benefits the world.
致力富有影響、造福世界的研究。
2. To nurture critical thinkers, effective communicators,
innovative problem solvers and socially responsible
global citizens.
培育敏於思辨、善於溝通、富於創見、精於解難，
且勇於承擔社會責任的世界公民。
3. To foster a University community in
which all members can excel in their aspirations with
a strong sense of belonging and pride.
營造讓員生志存高遠、心有歸屬、
樂於以大學為榮的環境。

Milestones 里程碑

1937

Founding of the Government Trade School in Wanchai, the first government funded, post-secondary technical school in Hong Kong.
香港官立高級工業學院正式成立，校舍位於灣仔，是全港第一所政府資助的專上程度工業學院。



1957

The Hong Kong Technical College moved to its new premises in Hung Hom.
工專遷往紅磡的新校舍。



The School was renamed the Hong Kong Technical College after World War II.
第二次世界大戰後學院改名為香港工業專門學院(工專)。

1947

1994

Legislation was enacted to change the name of the Institution to "The Hong Kong Polytechnic University". Self-accreditation status was granted by the Government.
有關理工正名大學之修訂法案正式生效，理工正名為「香港理工大學」(理大)，並獲政府頒授自我評審資格。



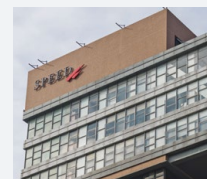
The Hong Kong Polytechnic (the Polytechnic) was formally established, taking over the campus of the Hong Kong Technical College.
香港理工學院(理大)正式成立，並接管工專的校舍。

1972

2000

Inauguration of the Institute for Enterprise (IfE) to provide professional services for business and industry on a self-financed basis.

企業發展院成立，為工商界提供自負盈虧式的專業服務。



Establishment of the School of Professional Education and Executive Development (SPEED) to foster lifelong education.
成立專業進修學院，致力促進終身學習。

1999

2011

Hotel ICON, a teaching and research hotel wholly-owned by PolyU, was officially opened.
理大全資擁有的教研酒店唯港薈正式開幕。



2017

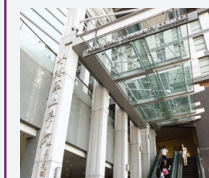
Redevelopment of Block X completed.
X座重建項目竣工。



Official opening of Jockey Club Innovation Tower.
賽馬會創新樓正式開幕。



2014



Set up of Hong Kong Community College (HKCC) to offer an expanded range of Associate Degree programmes.
成立香港專上學院，提供多個範疇的副學士學位課程。

2001

Opening Minds • Shaping The Future 啟迪思維 • 成就未來

Education 教育

Nurturing future-ready global citizens
培育面向未來的世界公民
Shaping socially responsible leaders of tomorrow
塑造貢獻社會的明日領袖



Research 科研

Addressing societal needs
應對社會所需
Making positive impact on the world
發揮正向影響以貢獻世界



Knowledge Transfer and Wider Engagement 知識轉移及廣泛參與

Transforming research excellence into impactful applications
轉化卓越科研 影響無遠弗屆
Nurturing entrepreneurs to do well and do good
培育「創富創善」企業家



Internationalisation and Engagement with the Nation 國際化及參與國家發展

Embracing internationalisation for education and research
懷抱國際化的教育和科研
Championing Belt and Road and Greater Bay Area development initiatives
開創促進「一帶一路」與「大灣區」發展的計劃

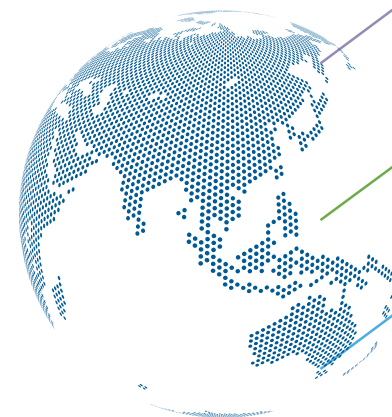


Financial Health and Institutional Sustainability 財務健康與機構可持續性

Boasting a robust governance structure
具備穩健的管治架構
Enhancing infrastructure to foster development
強化基礎設施以促進發展



RANKINGS 排名



QS Top 50 Under 50 Rankings 2019
2019年度QS年輕大學排名

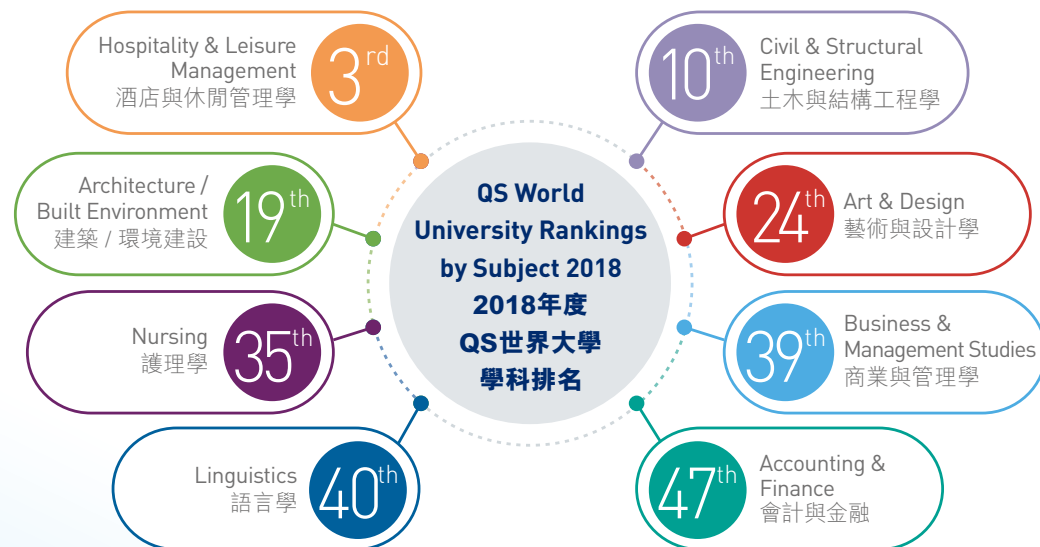
7th

QS Asian University Rankings 2019
2019年度QS亞洲大學排名

31st

QS World University Rankings 2019
2019年度QS世界大學排名

106th



FACULTIES, SCHOOLS AND DEPARTMENTS 學院及學系

Faculty of Applied Science & Textiles 應用科學及紡織學院



Department of Applied Biology and Chemical Technology
應用生物及化學科技學系
Department of Applied Mathematics
應用數學系
Department of Applied Physics
應用物理學系
Institute of Textiles and Clothing
紡織及服裝學系

Faculty of Construction & Environment 建設及環境學院

Department of Building and Real Estate
建築及房地產學系
Department of Building Services Engineering
屋宇設備工程學系
Department of Civil and Environmental Engineering
土木及環境工程學系
Department of Land Surveying and Geo-Informatics
土地測量及地理資訊學系



Faculty of Humanities 人文學院



Department of Chinese and Bilingual Studies
中文及雙語學系
Department of Chinese Culture
中國文化學系
Department of English
英文系
Confucius Institute of Hong Kong
香港孔子學院
English Language Centre
英語教學中心
General Education Centre
通識教育中心

Faculty of Business 工商管理學院

School of Accounting and Finance
會計及金融學院
Department of Logistics and Maritime Studies
物流及航運學系
Department of Management and Marketing
管理及市場學系



Faculty of Engineering 工程學院



Department of Biomedical Engineering
生物醫學工程學系
Department of Computing
電子計算學系
Department of Electrical Engineering
電機工程學系
Department of Electronic and Information Engineering
電子及資訊工程學系
Department of Industrial and Systems Engineering
工業及系統工程學系
Department of Mechanical Engineering
機械工程學系
Interdisciplinary Division of Aeronautical and Aviation Engineering
航空工程跨領域學部

Faculty of Health & Social Sciences 醫療及社會科學院



Department of Applied Social Sciences
應用社會科學系
Department of Health Technology and Informatics
醫療科技及資訊學系
Department of Rehabilitation Sciences
康復治療科學系
School of Nursing
護理學院
School of Optometry
眼科視光學院

School of Design 設計學院



School of Hotel & Tourism Management 酒店及旅遊業管理學院



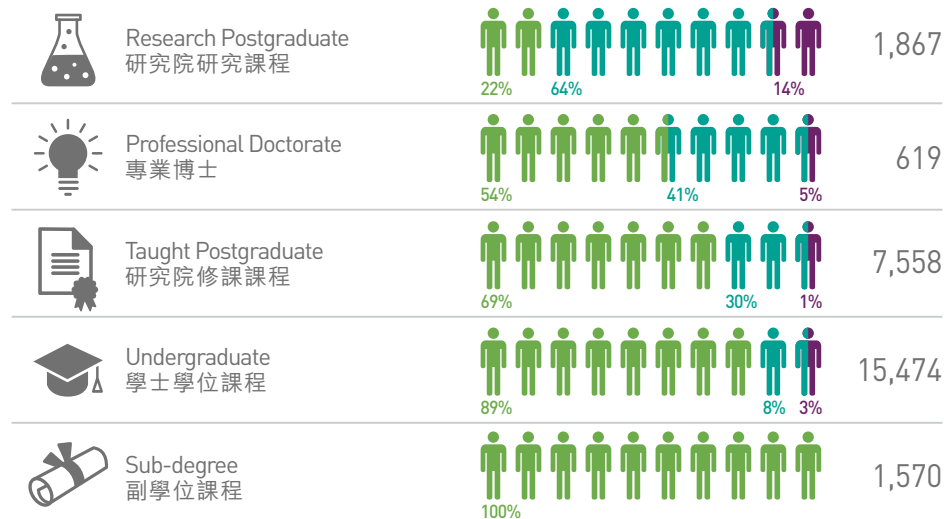
Students 學生

Total Student Enrolment 總學生人數 **27,088**

 Hong Kong 香港  Mainland China, Macau & Taiwan 中國內地、澳門及台灣  Other Overseas Countries & Regions 其他海外國家及地區

Student Enrolment by Level of Study and Place of Origin 以課程類別及學生出生地區分類之學生人數

Total 總人數



Total Student Enrolment by Place of Origin
以學生出生地區分類之學生總人數

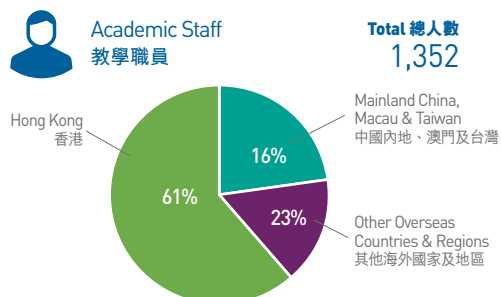
 21,278  4,984  826

Student Enrolment by Mode of Programme 以修讀模式分類之學生人數

Full-time 全日制 **20,722** | Part-time 兼讀制 **6,366**

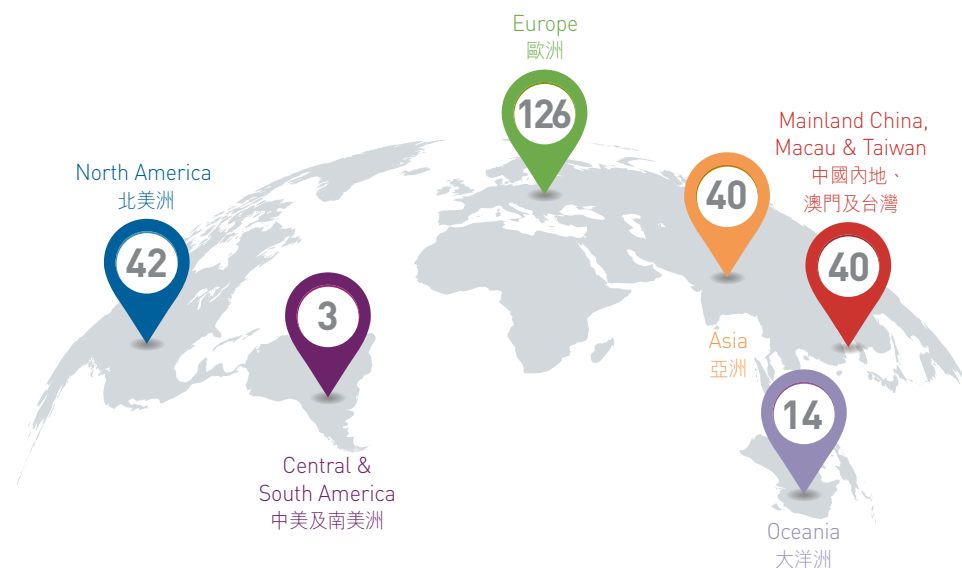
Staff 職員

Full-time Staff 全職制職員 **5,429**



GLOBAL CONNECTIONS 環球網絡

Exchange Partners 學生交流計劃夥伴 **265**



International Learning Experience 國際學習經驗

PolyU Undergraduate Students with International Learning Experience
有國際學習經驗的理大本科生

62.5% 



Number of Incoming Exchange Students (To PolyU)
海外學生來港交流人數 (到理大)

932

PolyU Service-Learning 理大服務學習

PolyU has been dedicated to cultivating responsible global citizens. Since the 2012/13 academic year, PolyU has incorporated service-learning into its new curriculum as a mandatory subject.

Within six years, service-learning (SL) has developed rapidly in PolyU, yielding remarkable and encouraging achievements. By the end of the 2017/18 academic year, over 16,600 students have attended SL courses, serving over 664,000 hours.

理大一直致力培育學生成為負責任的世界公民，自2012/13學年起，理大將服務學習納入新本科課程，成為必修科目。短短六年間，理大服務學習發展迅速，成績顯著，成果令人鼓舞。截至2017/18學年，已累積超過16,600名四年制本科生修讀服務學習課程，服務時數超過664,000小時。



No. of Undergraduate Students Enrolled in SL
修讀服務學習的本科生人數

3,733



No. of SL Subject-offerings
開辦的服務學習科目數目

66



No. of Service Hours
服務時數

149,320



Service Location
服務地點

- Hong Kong 香港
- Chinese Mainland 中國內地
- Overseas 海外

No. of Students Serving In
參與服務學習的學生人數

2,672
784
277



International Service-learning
海外的服務學習

Cambodia
柬埔寨

Kyrgyzstan
吉爾吉斯

Myanmar
緬甸

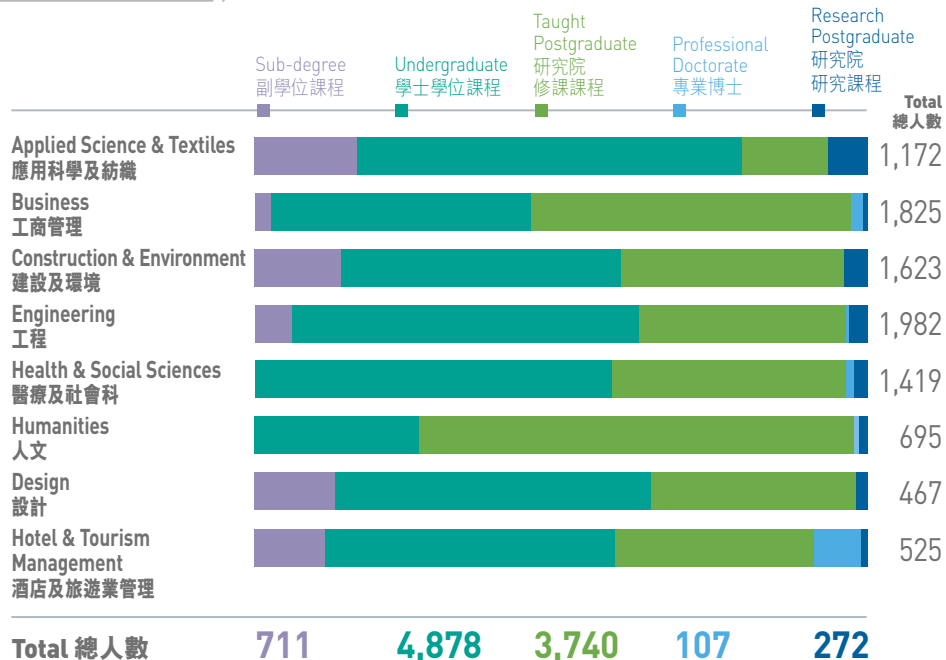
Rwanda
盧旺達

Vietnam
越南

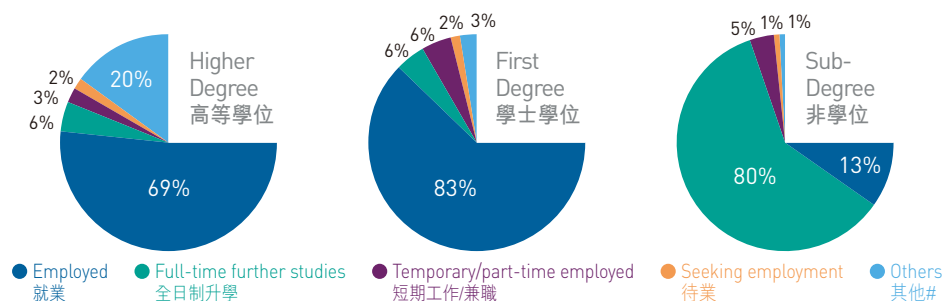


Highlights 焦點



GRADUATES
畢業生Total Number of Graduates
畢業生人數 **9,708**

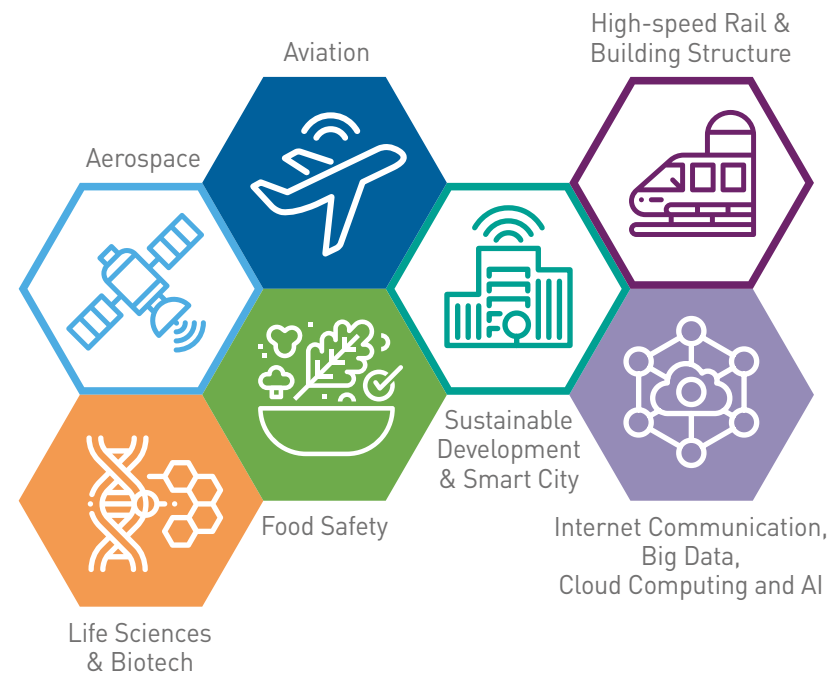
As % of full-time graduates responded to Graduate Employment Survey in 2017
以佔回覆2017年度全日制課程畢業生就業概況調查人數比率計



Including graduates emigrated/returned to country of origin and not seeking employment in Hong Kong.
包括已移民/返回原居地及非在尋找工作之畢業生。

Graduates' Average Monthly Salary
畢業生每月平均薪酬First Degree Graduates
學士學位畢業生**HKD \$19,041**
港元Alumni
校友Cumulated Number of Alumni
累計校友人數**357,000**Number of Alumni Associations,
including Overseas Associations
校友會數目，包括海外校友會**48**RESEARCH AND INNOVATION
科研及創新

PolyU's Strategic Research Domains

Research Funding
科研撥款HKD Million 百萬港元
\$875.9University Grants Committee Block Grants
大學教育資助委員會整筆撥款**\$442.0**Research Grants Council General Research Funds
研究資助局優配研究金**\$80.9**Other External Competitive Research Grants
其他對外角逐撥款**\$289.3**Other Funds
其他撥款**\$63.7**

Research Facilities 研究設施

2所

Hong Kong Branches of Chinese National Engineering Research Centres 國家工程技術研究中心香港分中心

- Hong Kong Branch of National Engineering Research Centre for Steel Construction 國家鋼結構工程技術研究中心香港分中心
- Hong Kong Branch of National Rail Transit Electrification and Automation Engineering Technology Research Centre 國家軌道交通電氣化與自動化工程技術研究中心香港分中心

2所

Hong Kong Partner State Key Laboratories 國家重點實驗室香港夥伴實驗室

- Partner State Key Laboratory of Chemical Biology and Drug Discovery 化學生物學及藥物研發國家重點實驗室
- Partner State Key Laboratory of Ultra-precision Machining Technology 超精密加工技術國家重點實驗室夥伴實驗室

1所 Research Institute 研究所

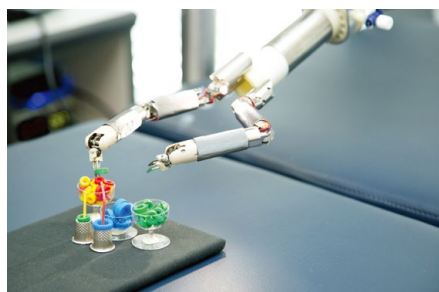
- Research Institute for Sustainable Urban Development 可持續城市發展研究院

6所 University Research Facilities 研究中心 實驗室

32所 Research Centres 研究中心



For more information on our research facilities,
please scan this QR code.
如欲了解本校所有研究設施，請掃描此二維碼。



Selected International Research Collaborations 國際合作科研例子

Aircraft Damage Inspection & Assessment 飛機損壞檢查和評估

This project commenced in November 2017 and is concerned with the identification and categorization of damage on airframes, specifically lightning induced damage. The project consists of three parts (a) Aircraft Inspection, (b) Damage assessment and (c) Corrosion classification and will bring major improvements in all three parts.

For the inspection phase, the ASRC uses a stand-off long focal length camera lens to acquire a number of images to cover the upper surfaces of the airframe. For a BOEING 747, this accounts for 800 images. Each image is processed by computer to detect damage via surface autocorrelation and filtering. With this method, the ASRC is developing a completely new approach for airframe inspection from a distance of about 30 meters, thus allowing inspection without disturbing other operations.

In the damage assessment phase the ASRC will construct a device consisting of a flash thermography system and a structured light 3D camera system. These will work together to create a three-dimensional model of the suspected damage area which will be transmitted to the Aircraft Manufacturer for analysis. Corrosion assessment will be conducted using a hyperspectral imaging (HSI) camera or a borescope, which can also be used for lightning strike detection.

The project received an Innovation and Technology Fund approximately HK\$8M and will be completed in October 2019. In summer 2018, the ASRC has successfully tested the technology for Aircraft Inspection on a BOEING 747 fuselage. The simulated lightning damage has been identified automatically by the software from 30 meters.

該項目於2017年11月開始，涉及機身損壞的識別和分類，特別是雷擊引起的損壞。該項目由三部分組成 (a)飛機檢查，(b)損壞評估和 (c)腐蝕分類，並將對這三個部分進行重大改進。

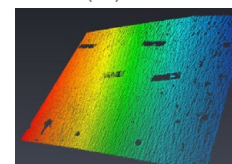
在檢查階段，航空服務研究中心利用支架長焦距相機鏡頭攝取大量覆蓋機身表面的圖像。對於波音747，佔了800張圖像。每個圖像由計算機處理，以通過表面自相關和濾波來檢測損壞。通過這種方法，航空服務研究中心正在開發一種全新的機身檢測方法，距離大約30米，從而可以在不影響其他操作的情況下進行檢查。

在損壞評估階段，航空服務研究中心將構建一個由閃光熱成像系統和結構光3D相機系統組成的設備。這些將共同創建可疑損傷區域的三維模型，該模型將被傳輸到飛機製造商進行分析。將使用高光譜成像 (HSI) 相機或管道鏡進行腐蝕評估，該相機也可用於雷擊檢測。

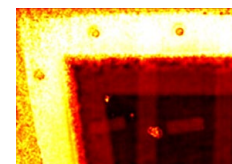
該項目獲創新及科技基金約800萬港元，將於2019年10月完成。在2018年夏季，航空服務研究中心已成功測試了波音747機身的飛機檢測技術。模擬的雷擊損壞已由軟件自動識別，距離為30米。



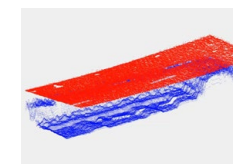
Surface image (3D)
表面圖像(3D)



Subsurface image
表面下的圖像



Combined images as point clouds
將圖像組合為點雲





DISH Global Centre for Food Safety and Quality DISH 環球食品安全及質量中心

Jointly founded by National Food Institute - Technical University of Denmark (DTU), Alma Mater Studiorum - University of Bologna (Unibo), Lund University (LU), and The Hong Kong Polytechnic University (PolyU), DISH Global Centre for Food Safety and Quality is a non-profit collaborative alliance set out to address challenges in global food safety, with the motto of "Powering Food Safety with Science and Technology." It is a unique Europe-Hong Kong establishment by four economies - Denmark, Italy, Sweden, and Hong Kong, with the vision to become a global leading collaborative centre for food safety.

由丹麥技術大學國家食品研究所(DTU)、意大利博洛尼亞大學(Unibo)、瑞典隆德大學(LU)和香港理工大學(理大)共同成立的DISH環球食品安全及質量中心為非牟利的合作平台，以科技驅動食品安全為宗旨來回應全球食品安全的挑戰。DISH這個歐洲-香港合作平台代表著丹麥、意大利、瑞典和香港四個經濟體，致力發展成為全球領先的食品安全合作中心。

EU-China-Safe Project 中國與歐盟的食品安全項目

PolyU is one of the key players in a food safety initiative spanning across Europe and China in an effort to improve food safety and tackle food fraud. The EU-China-Safe project involves 33 players in the food industry, research organisations and Governments across two of the world's largest trading areas. PolyU is the only university in Hong Kong to participate in this significant food safety initiative. PolyU contributes its cutting-edge food safety innovations and technologies to the international arena through the EU-China-Safe project, and will continue to contribute towards the advancement of global food safety in collaboration with stakeholders.

理大於中國與歐盟的食品安全項目中擔任重要的角色，致力改善食品安全及打擊食物造假。EU-China-Safe項目共有33個來自中國及歐盟的合作夥伴，當中包括食品業、科研機構和政府，而理大是參與這全球大型食品安全合作項目的唯一本地大學。理大通過EU-China-Safe項目，將研發的最尖端的食物安全創新科技帶上國際舞台，竭力推進全球食品安全，並與持份者共同應對食品安全挑戰，進一步貢獻所長。



Addressing Unmet
Food Safety Needs
through Innovation

KNOWLEDGE TRANSFER 知識轉移

Entrepreneurship Development 創業發展


Statistics & Achievements 統計數據與成就

Entrepreneurship Funding & Training 創業基金及教育 Number (ca.) 數目(約)

	Start-ups Supported 初創企業支援	240
	Entrepreneurs Nurtured 已培育之企業家人數	500
	Training Hours Offered 提供之培訓時數	78,000
	Awards 獎項	150
	Follow-on Funding / Investment 延續基金 / 投資	HK\$350M
	Actively Operating Company 活躍營運之企業*	60%

*Counting those still operating 3 years after funding support 於取得基金後持續營運了3年或以上

Patents 專利

		Number 數目
	Patents Filed 專利申請	131
	Patents Granted 專利發明	52

CAMPUS FACILITIES 校園設施

Library Collections and Facilities 圖書館館藏及設施

Total Library Holdings 全館收藏資料總數 **5,426,666**

	1,275,244 Volumes in Library 圖書總冊數		3,243,482 e-Books 電子書籍		131,780 e-Journals (titles) 電子期刊(種類)
	464 e-Databases 電子數據庫		10,451 Computer Files 電腦檔案		578,111 Audio-visual Materials 視聽資料
	187,134 Microforms 縮微複制資料		3,916 Study Spaces 座位數目		164 Research Carrels 研究室

IT Facilities 資訊科技設施

Buildings with Optical Fibre Connection 光纖連接的建築物



100%

Internet Bandwidth 互聯網頻寬

International
Maximum (shared)
國際最高 (共享)

International
Guarantee (allocated)
國際保證 (獨享)

Local
Maximum (shared)
本地最高 (共享)



9,420 Mbps

1,997 Mbps

10 Gbps

Wi-Fi 無線網絡

Wi-Fi Coverage
in Campus
校園無線網絡覆蓋

Wi-Fi Access Points
in Campus
校園無線接入點

Wi-Fi Access Points in
Student Halls of Residence
學生宿舍無線接入點



100%

2,300

3,100

Wi-Fi Access Points outside Campus for PolyU users
(via agreement with external service provider)
為理大用戶提供的校外無線接入點 (通過與服務供應商的協議)

>20,000

Student Halls of Residence 學生宿舍

Number of Students Accommodated 學生宿位數目

Hung Hom
紅磡

Homantin
何文田



3,004

1,650

COLLEGE OF PROFESSIONAL AND CONTINUING EDUCATION 專業及持續教育學院



PolyU has established the College of Professional and Continuing Education (CPCE) to oversee the operation of two self-financed education units, namely Hong Kong Community College (HKCC) and School of Professional Education and Executive Development (SPEED).

理大設立了專業及持續教育學院，轄下教學單位包括香港專上學院及專業進修學院。

Total CPCE Student Enrolment 總學生人數 14,319

CPCE Student Enrolment by Programme Type
以課程類別分類之學生人數

HKCC 香港專上學院	Higher Diploma 高級文憑	Associate Degree 副學士
	741	8,678
SPEED 專業進修學院	Bachelor's Degree 學士學位	Bachelor's Degree (Franchised programmes of PolyU) 學士學位 (理工大學特許經營課程)
	2,929	1,971

CPCE Student Enrolment by Place of Origin
以學生出生地區分類之學生人數

Hong Kong 香港	Mainland China, Macau & Taiwan 中國內地、澳門及台灣	Other Overseas Countries & Regions 其他海外國家及地區
14,206	112	1

CPCE Student Enrolment by
Mode of Programme
以修讀模式分類之學生人數

Full-time
全日制 12,499

Part-time
兼讀制 1,820

Note: The above figures do not include students enrolled on programmes leading to awards of overseas universities, credit bearing courses offered under Credit Accumulation Mechanism (CAM), and other non-credit bearing courses offered via SPEED.

附註：上述數字不包括就讀於專業進修學院與海外合辦之課程、學分累積制及非學分累積制課程的學生。

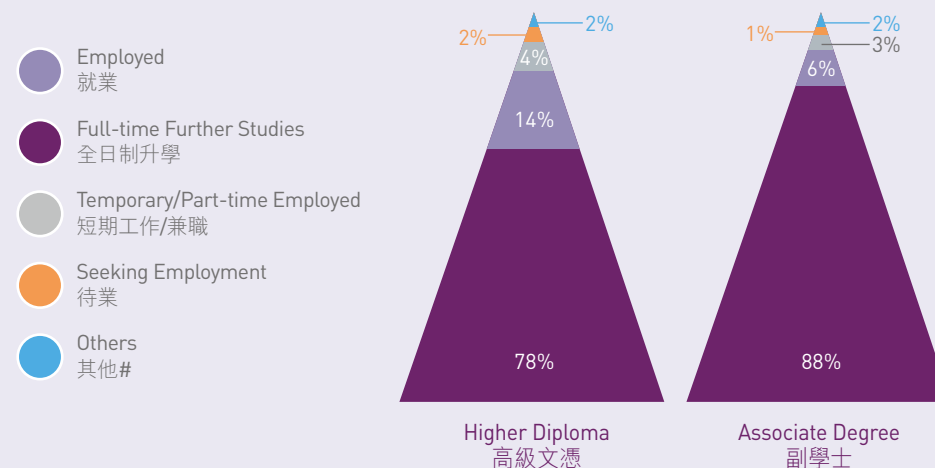
CPCE Full-time Staff 全職制職員 548

CPCE Full-time Staff by Category
以職級分類之全職制職員

Teaching Staff 教學職員	Administrative/Support Staff 行政及支援職員
284	264

Graduates Articulation Overview 畢業生升學總覽

HKCC 香港專上學院



Total Number of Graduates
畢業生人數

161

2,342

Graduates' Average Monthly Salary (HKD)
畢業生每月平均薪酬 (港幣)

\$11,568

\$11,620

Including those pursuing further studies for programmes other than undergraduate level.
包括升讀學士學位以外課程。

