



THE HONG KONG
POLYTECHNIC UNIVERSITY
香港理工大學

PolyU

IN FIGURES

2013/14

二零一三/一四年度香港理工大學

主要統計數字



General Information on Students, Staff, Research, Finance and Facilities
學生、教職員、科研、財政及設施數字一覽

CONTENTS 內容

	Page 頁數
Introduction 簡介	<u>1</u>
Students 學生	<u>2</u>
Graduate Employment 畢業生就業概況	<u>4</u>
Staff 教職員	<u>5</u>
Research and Scholarly Activities 科研和學術交流活動	<u>6</u>
Facilities 設施	<u>8</u>
Finance 財政	<u>10</u>
Faculties / Schools and Academic Departments 學院及學系	<u>11</u>
College of Professional and Continuing Education 專業及持續教育學院	<u>12</u>
PolyU Main Campus Map 理大校園地圖	<u>18</u>
Extended Campuses (Cross-section) 伸延校園(橫切面圖)	<u>20</u>

INTRODUCTION 簡介



The Hong Kong Polytechnic University 香港理工大學

The Hong Kong Polytechnic University (PolyU) has established a fine reputation as the pioneer and leader in professional education and innovative research in Hong Kong. We have nurtured more than 355,000 graduates over the past 77 years, many of whom have become movers and shakers in their industries and professions, making significant contributions to the advancement of our society.

Apart from nurturing the much needed talents and professionals for society, PolyU also excels in research and innovation. Through applying research results to meet community needs and maintaining close partnerships with the business and industry, the University has been able to turn innovative ideas into practical use, bringing benefits to mankind.

香港理工大學(理大)在提供專業教育和推動創新科研方面,是香港的先鋒和翹楚。過去七十七年來,理大培育了超過三十五萬五千名畢業生,他們在不同行業大展所長,當中不乏業界領袖,對推動社會進步作出重要貢獻。

除了致力為社會培育優秀人才和專業人士外,理大也長於研究及創新。理大善用科研成果以配合社會需要,以及積極與工商界建立緊密的夥伴關係,從而把創新意念轉化到應用範疇,造福人類。

STUDENTS 學生

In 2013/14, there were 32,254 students, equivalent to 25,898 full-time students, enrolled in academic programmes leading to PolyU awards. The breakdowns were:

在二零一三至一四年度，本校共有註冊學生三萬二千二百五十四名（相當於二萬五千八百九十八名全日制學生）就讀於理大頒授學術資格的課程。學生人數分佈如下：

By Award of Programmes 以課程程度分類

	Headcounts 實際人數	Full-time Equivalents 相等於全日制人數
Doctor of Philosophy/Master of Philosophy 哲學博士/哲學碩士	1,594 (5%)	1,407 (5%)
Professional Doctorate 專業博士	402 (1%)	157 (1%)
Taught Master's Degrees 授課式碩士	8,269 (26%)	4,588 (18%)
Bachelor's Degrees 學士學位	18,638 (58%)	16,534 (64%)
Higher Diploma 高級文憑	3,308 (10%)	3,197 (12%)
Other Sub-degree 其他非學位	43 (<0.5%)	15 (<0.5%)

By Mode of Programmes 以修課形式分類

	Headcounts 實際人數	Full-time Equivalents 相等於全日制人數
Full-time 全日制	21,936 (68%)	21,847 (84%)
Part-time 兼讀制	10,318 (32%)	4,051 (16%)

By Programmes Offered in Different Locations 以課程開辦地區分類

	Headcounts 實際人數	Full-time Equivalents 相等於全日制人數
Locally 本地開辦	31,030 (96%)	25,359 (98%)
In Mainland 國內開辦	1,211 (4%)	535 (2%)
On-line 網上開辦	13 (<0.5%)	4 (<0.5%)



By Students' Place of Origin 以學生出生地區分類

	Headcounts 實際人數	Full-time Equivalents 相等於全日制人數
Hong Kong 香港	26,286 (82%)	20,742 (80%)
Mainland, Macau & Taiwan 國內、澳門及台灣	5,548 (17%)	4,757 (18%)
International 國際	420 (1%)	399 (2%)

By Faculty / School 以學院分類

	Headcounts 實際人數	Full-time Equivalents 相等於全日制人數
Applied Science & Textiles 應用科學及紡織	4,091 (13%)	3,582 (14%)
Business 工商管理	4,979 (15%)	3,901 (15%)
Construction & Environment 建設及環境	4,637 (14%)	3,626 (14%)
Engineering 工程	6,907 (21%)	5,414 (21%)
Health & Social Sciences 醫療及社會科	6,446 (20%)	4,972 (19%)
Humanities 人文	1,886 (6%)	1,491 (6%)
Design 設計	1,353 (4%)	1,225 (5%)
Hotel & Tourism Management 酒店及旅遊業管理	1,955 (6%)	1,687 (7%)

Students' average age 平均學生年歲：

Full-time students 全日制學生	22
Part-time students 兼讀制學生	31

Gender ratio (male to female) 男女生比例（男：女）：

Full-time students 全日制學生	0.9:1
Part-time students 兼讀制學生	1.4:1

GRADUATE EMPLOYMENT 2013

二零一三年度畢業生就業概況



In 2013, a total of 5,362 students graduated from the University's full-time programmes and out of these graduates, 4,697 responded to the Graduate Employment Survey. Their destinations, as a percentage of the total respondents by level of award, were:

在二零一三年度舉行的理大畢業生就業概況調查中，大學訪問了全數五千三百六十二名全日制課程畢業生，其中四千六百九十七名回應調查。根據回應結果，他們的出路概況，以佔回覆人數比率計及以課程程度分類列表如下：

	Higher Degree 高等學位	First Degree 學士學位	Sub-Degree 非學位
Employed 就業	85%	87%	29%
Full-time further studies 升學(全日制)	5%	5%	66%
Temporary/part-time employed 短期工作/兼職	1%	4%	4%
Seeking employment 待業	2%	2%	1%
Others 其他#	7%	2%	1%

Graduates' average monthly salary 畢業生每月平均薪酬：

Higher degree graduates 高等學位畢業生	HK港元\$20,541
First degree graduates 學士學位畢業生	HK港元\$16,148
Sub-degree graduates 非學位畢業生	HK港元\$16,487##

(# Including graduates emigrated/returned to country of origin and not seeking employment in Hong Kong. 包括已移民/返回原居地及非在尋找工作之畢業生。)

A large portion of sub-degree graduates working on full-time basis were engaged in community/social services sectors with an average monthly salary at \$23,913, thus giving a comparatively higher average monthly salary than that of the degree graduates.

由於大部份非學位畢業生投身於薪津較高的社會/福利機構工作，其平均月薪達\$23,913，因此所有全職工作的非學位畢業生的平均月薪比學士學位畢業生為高。)

STAFF 教職員

As of 31 October 2013, the University had 5,603 staff, comprising 3,552 permanent staff and 2,051 temporary staff, of whom:

以二零一三年十月三十一日計，理大聘用了五千六百零三名教職員，其中長期制員工佔三千五百五十二名，臨時制員工二千零五十一名。如以教學或非教學部門及職級分類，員工數目分別是：

Employed in Academic Departments 聘用於教學部門

	Permanent 長期制	Full-time Temporary 臨時全職制	Part-time Temporary 臨時兼職制
Academic grade 教學職級	1,244 (35%)	131 (10%)	362 (46%)
Research grade 研究職級	-	876 (70%)	218 (28%)
Administrative grade 行政職級	42 (1%)	4 (<0.5%)	-
Technical grade 技術性職級	197 (6%)	25 (2%)	6 (1%)
General & ancillary grade 普通及輔助職級	547 (15%)	131 (10%)	59 (7%)
Sub-total 小計	2,030 (57%)	1,167 (93%)	645 (82%)

Employed in Non-academic Departments 聘用於非教學部門@

	Permanent 長期制	Full-time Temporary 臨時全職制	Part-time Temporary 臨時兼職制
Academic grade 教學職級	-	1 (<0.5%)	104 (13%)
Research grade 研究職級	-	12 (1%)	1 (<0.5%)
Administrative & professional grade 行政及專業職級	232 (7%)	4 (<0.5%)	5 (1%)
Technical grade 技術性職級	141 (4%)	18 (1%)	9 (1%)
General & ancillary grade 普通及輔助職級	1,149 (32%)	58 (5%)	27 (3%)
Sub-total 小計	1,522 (43%)	93 (7%)	146 (18%)
Total 總人數	3,552	1,260	791

(@ Including Offices of the President, faculty offices, administrative units and central support services. 非教學部門包括校長室，學院辦事處，行政部門及教學支援部門。)

RESEARCH AND SCHOLARLY ACTIVITIES

科研和學術交流活動



For the year ended 30 June 2014, the University received research project funding of HK\$449.8 million on cash basis and the breakdown was :

截至二零一四年六月三十日止年度，大學按現金收付制所獲得的科研項目資金達四億四千九百八十萬港元，各項主要資金分配情況如下：

	HK\$ Million 百萬港元	
University Grants Committee block grants 大學教育資助委員會整筆撥款	117.6	(26%)
Research Grants Council general research fund 研究資助局優配研究金	75.7	(17%)
Other external competitive research grants 其他對外角逐撥款	186.9	(42%)
Other non-University Grants Committee funds 其他非大學教育資助委員會撥款	69.6	(15%)

By 2013/14, 2 research institutes and 25 research centres have been established in the University under the Areas of Excellence Committee and the Research Committee respectively, and there were 2,928 research projects, worth HK\$1,338.1 million as funded by research grants and external funds, undergoing in the Faculties / Schools. The distribution of these on-going research projects by faculty / school was :

在二零一三至一四年度，理大於校內設立了兩所研究所和二十五所研究中心，它們分別由卓越學術領域委員會和研究委員會管轄。在此年度，理大共有二千九百二十八項由科研撥款及外界資金資助金額總值達十三億三千八百一十萬港元的研究計劃正在進行中。這些研究項目以學院分類是：

	Number 累積 研究項目		Cumulative Funding HK\$ Million 累積資助金額 百萬港元	
Applied Science & Textiles 應用科學及紡織	622	(21%)	331.1	(25%)
Business 工商管理	388	(13%)	76.1	(6%)
Construction & Environment 建設及環境	563	(19%)	318.1	(24%)
Engineering 工程	600	(21%)	303.1	(23%)
Health & Social Sciences 醫療及社會科	367	(13%)	225.0	(17%)
Humanities 人文	192	(7%)	42.9	(3%)
Design 設計	69	(2%)	18.6	(1%)
Hotel & Tourism Management 酒店及旅遊業管理	127	(4%)	23.2	(2%)

In 2013/14, 5,064 number of research outputs were produced by faculty members, of which :

理大的研究作品數目在年內達五千零六十四份，其中：

Refereed outputs 經審閱的研究作品	3,487	(69%)
Non-refereed outputs 未經審閱的研究作品	1,577	(31%)

During the year, the University processed 76 new patent applications from faculty members, filed 67 applications and 49 patents were granted.

過去一年，大學處理了七十六份專利權申請書，正式提交專利申請共六十七份，獲得的新專利發明共四十九項。

FACILITIES 設施

The University provides various kinds of facilities to support students' learning and development. In 2013/14, these facilities included:

本校提供多項設施幫助學生學習及全面成長。在二零一三至一四年度中，這些設施包括：



Computing Facilities 電腦設施

	Number 數目
Medium to large servers 中型及大型服務器	1,174
Desktop PCs/workstations 桌上電腦/工作站	20,928
Notebook PCs 手提電腦	7,008
Network outlets in campus 校園網絡插座	34,500
Online subject websites 網上科目	6,381

Library Collection 圖書館收藏項目

	Number 數目
Monograph titles 書籍種類	863,184
Volumes in library 圖書總冊數	1,283,862
Electronic resources 電子資源	595,345
Audio-visual materials 視聽資料	499,223
Microforms 縮微複製資料	400,438
Total library holdings 全館收藏資料總數	2,778,868
Study spaces 座位數目	3,893

Sports Facilities on Campus 校園運動設施

	Number 數目
Swimming pool (50 meter) 游泳池(五十米)	1
5-a-side soccer pitch 五人足球場	1
Tennis court 網球場	2
Squash court 壁球場	4
Badminton court 羽毛球場	9
Multi-purpose sports hall 多用途運動場館	3
Golf practice bay 高爾夫球練習場	2
Fitness room 健身室	2
Activity room 活動室	2
Table tennis 乒乓球檯	9



Sports Facilities off Campus 校外運動設施 (Joint Sports Centre 聯校運動中心)

	Number 數目
11-a-side soccer pitch 十一人足球場	1
Tennis court 網球場	4
Track & field facilities 田徑運動設施	1
Outdoor multi-purpose court 戶外多用途運動場	1
Golf practice bay 高爾夫球練習場	4



Student Halls of Residence 學生宿舍

	Number 數目
Number of students accommodated 學生宿位數目	4,654
Sports facilities 運動設施	
- Swimming pool (25 meter) 游泳池(二十五米)	1
- Snooker room 桌球室	2
- Fitness room 健身室	2
- Activity room 活動室	4
- Table tennis 乒乓球檯	10



The major University's income and expenditure for the year ended 30 June 2014 was:

截至二零一四年六月三十日止年度，大學主要的收入與支出：

	HK\$ Million 百萬港元	
Total Income 總收入	5,440.8	
Government subventions 政府撥款	2,877.7	(53%)
- UGC recurrent grants and subventions 大學教育資助委員會經常性撥款*	2,318.8	(43%)
- Earmarked grants 指定用途補助金*	115.9	(2%)
- Capital project grants 基建項目撥款	229.9	(4%)
- Matching grants 配對補助金	39.8	(1%)
- Grants from government agencies 政府機構撥款	123.9	(2%)
- Rates and government rent refund 退還差餉及政府地租	49.4	(1%)
Tuition and other fees 學費及其他收費	1,593.1	(29%)
Net investment gain 投資淨收益	307.1	(6%)
Donations and benefactions 外界捐助	208.3	(4%)
Other income 其他收入	454.6	(8%)
Total Expenditure 總開支	4,609.5	
Learning and research 學習及科研	3,158.8	(69%)
- Instruction and research 教學及科研	2,657.9	(58%)
- Library 圖書館	136.8	(3%)
- Central computing facilities 中央電腦設施	135.1	(3%)
- Other academic services 其他教學服務	229.0	(5%)
Institutional support 教學支援	1,439.6	(31%)
- Management and general 管理及一般項目	258.2	(6%)
- Premises and related expenses 校舍及有關開支**	918.0	(20%)
- Student and general educational services 學生及一般教育服務	224.0	(5%)
- Other activities 其他活動	39.4	(1%)
Finance costs 財務費用	11.1	(<0.5%)

(* Including grants for research activities. 包括研究活動撥款。)

** Including expenditure on capital project grants. 包括基建項目支出。)

學院及學系 FACULTIES / SCHOOLS AND ACADEMIC DEPARTMENTS





PolyU has established the College of Professional and Continuing Education (CPCE) to oversee the operation of two self-financed education units, namely Hong Kong Community College (HKCC) and School of Professional Education and Executive Development (SPEED).

理大設立了專業及持續教育學院，轄下教學單位包括香港專上學院及專業進修學院。

Student Numbers 學生人數

In 2013/14, a total of 10,343 students, equivalent to 9,657 full-time students ^(note), were enrolled in the academic programmes offered by the two units under CPCE - Hong Kong Community College (HKCC) and School of Professional Education and Executive Development (SPEED). The distribution of CPCE student numbers was :

在二零一三至一四年度，專業及持續教育學院共有一萬零三百四十三名註冊學生（相當於九千六百五十七名全日制學生）^{（附註）}就讀於其轄下單位-香港專上學院及專業進修學院。學生人數分佈如下：

By Type of Programmes 以課程類別分類

	Headcounts 實際人數	Full-time Equivalents 相等於全日制人數
HKCC 香港專上學院	7,685 (74%)	7,685 (80%)
Higher Diploma 高級文憑	486 (5%)	486 (5%)
Associate Degree 副學士	7,199 (70%)	7,199 (75%)
SPEED 專業進修學院	2,658 (26%)	1,972 (20%)
Bachelor's Degree 學士學位	2,658 (26%)	1,972 (20%)

By Mode of Programmes 以修讀模式分類

	Headcounts 實際人數	Full-time Equivalents 相等於全日制人數
Full-time 全日制	9,800 (95%)	9,385 (97%)
Part-time 兼讀制	543 (5%)	272 (3%)

(Note: The above figures do not include students enrolled on programmes leading to awards of overseas universities, credit bearing courses offered under Credit Accumulation Mechanism (CAM), and other non-credit bearing courses offered via SPEED.

附註：上述數字不包括就讀於專業進修學院與海外大學合辦之課程，學分累積制及非學分累積制課程的學生。)

COLLEGE OF PROFESSIONAL AND CONTINUING EDUCATION



By Students' Place of Origin 以學生出生地區分類

	Headcounts 實際人數	Full-time Equivalents 相等於全日制人數
Hong Kong 香港	10,282 (99%)	9,610 (99%)
Mainland, Macau & Taiwan 國內、澳門及台灣	58 (1%)	44 (<0.5%)
Other overseas countries and regions 其他海外國家及地區	3 (<0.5%)	3 (<0.5%)

Students' average age 平均學生年歲：

Full-time students 全日制學生	20
Part-time students 兼讀制學生	28

Gender ratio (male to female) 男女生比例（男：女）：

Full-time students 全日制學生	0.7:1
Part-time students 兼讀制學生	0.6:1

專業及持續教育學院



Staff Numbers 教職員人數

679 staff members were employed at CPCE in 2013/14 (as of 31 December 2013), and the distribution was:

專業及持續教育學院於二零一三至一四年度(以二零一三年十二月三十一日計)共聘有六百七十九名教職員，分類如下：

	Permanent 長期制	Full-time Temporary 臨時全職制	Part-time Temporary 臨時兼職制
Teaching grade 教學職級	263 (55%)	1 (11%)	158 (84%)
Administrative & professional grade 行政及專業職級	12 (2%)	-	-
Technical grade 技術性職級	3 (1%)	-	3 (2%)
General & ancillary grade 普通及輔助職級	204 (42%)	8 (89%)	27 (14%)
Total 總人數	482	9	188

COLLEGE OF PROFESSIONAL AND CONTINUING EDUCATION

Facilities 設施

Students of HKCC and SPEED pursue their studies in the two extended campuses of PolyU, namely the Hung Hom Bay Campus and the West Kowloon Campus.

香港專上學院和專業進修學院的學生可在香港理工大學的兩所伸延校園－紅磡灣和西九龍校園－上課及學習。



The Hung Hom Bay Campus hosts applied social sciences, humanities & communication, science & technology, design and other specialised programmes and is equipped with Design Studios, Metal and Wood Workshop, Healthcare Laboratory, Multi-Purpose Laboratory, Science Laboratory, etc. The West Kowloon Campus is mainly dedicated to the delivery of business programmes and is equipped with U-shaped discussion classrooms catering for the teaching and learning needs of business programmes.

紅磡灣校園專供應用社會科學、人文及傳意、科技、設計及專科課程使用，校園內設有多個特別教學室如設計工作室、金木工製作室、健康護理實習室、多用途實習室及科學實驗室等；而西九龍校園則主要為工商業課程授課用途，校園設有馬蹄型課室方便課堂時交流討論。



專業及持續教育學院



At each campus, there are more than 50 standard classrooms and 9 lecture theatres, as well as the following specially-designed learning facilities and sports facilities:

兩所校園除各自設有逾五十間課室及九座演講廳外，更各自設有以下特別教學設施及體育設施：

Learning Facilities 教學設施

- 2 - 4 "Tomorrow Classrooms" equipped with the latest audio-visual equipment
二至四間設有先進視聽設備的「明日課室」
- 3 - 5 IT laboratories 三至五間資訊科技學習室
- A spacious computer centre with a seating capacity of 270 - 300
電腦中心，可容納二百七十至三百人
- A library equipped with advanced e-resources capability
圖書館提供先進的電子資源設施
- 3 - 5 language laboratories 三至五間語言學習室

Sports and Performing Arts Facilities 體育及演藝設施

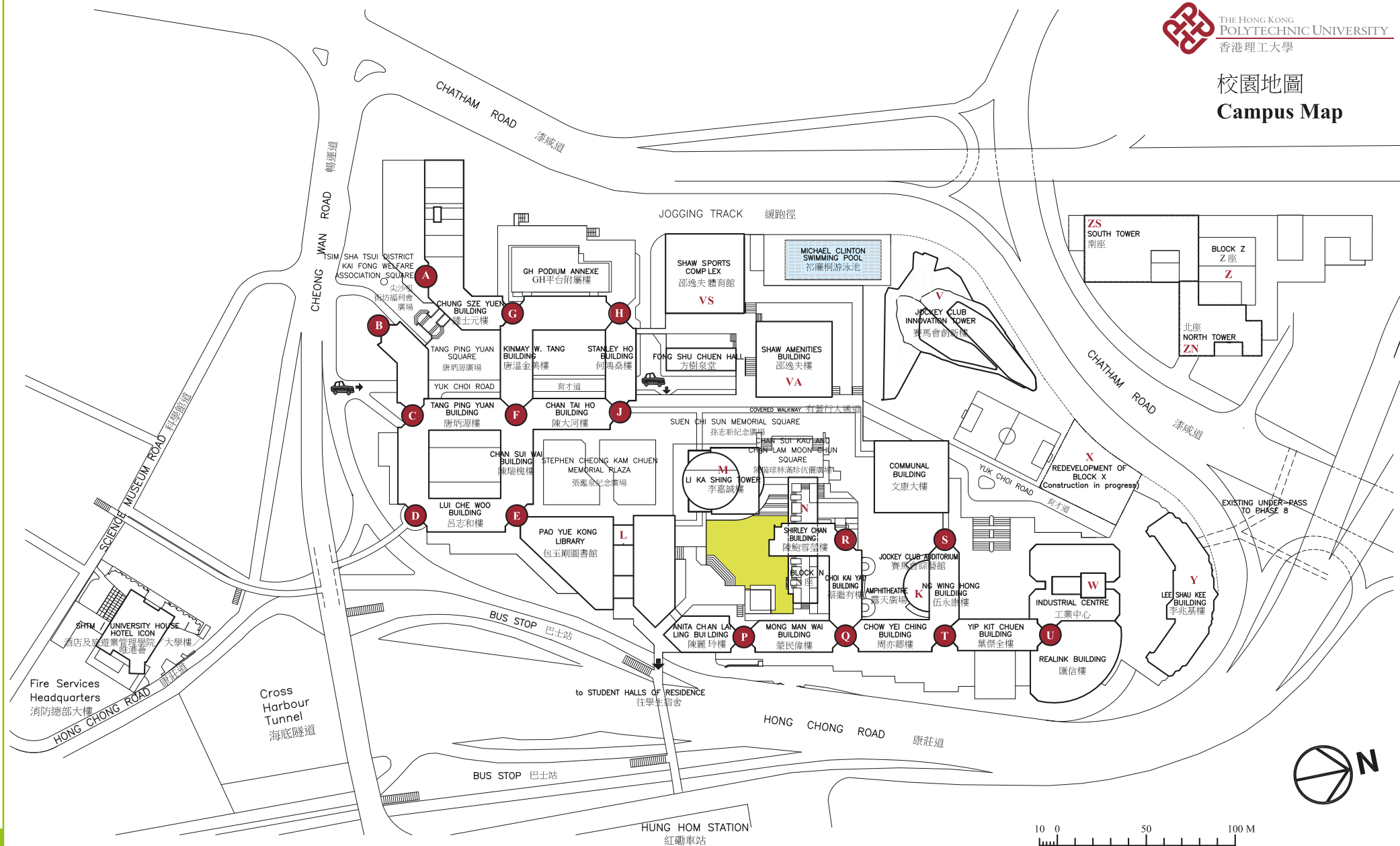
- A multi-purpose hall and gymnasium for basketball / volleyball / badminton / table-tennis 多用途會堂(可作籃球、排球、羽毛球或乒乓球場)
- A performing arts rehearsal room 演藝綵排室
- A fitness centre (available in West Kowloon Campus only)
健身中心(只設在西九龍校園)
- A music room (available in West Kowloon Campus only)
音樂室(只設在西九龍校園)

PolyU MAIN CAMPUS MAP

理大校園地圖



校園地圖 Campus Map



January 2014



10 0 50 100 M

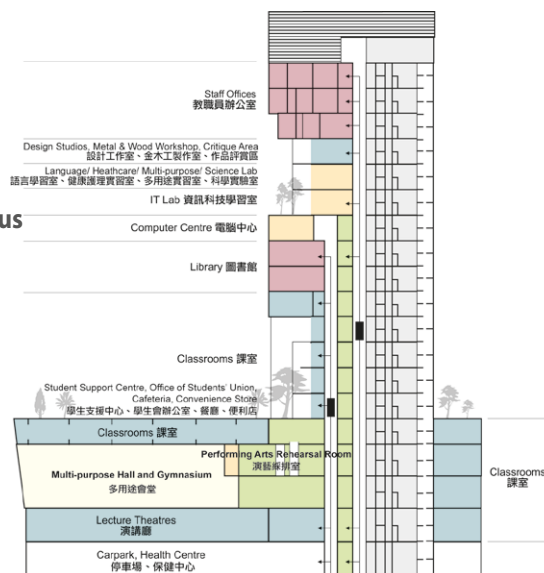
EXTENDED CAMPUSES 伸延校園

MOTTO 校訓

The Hung Hom Bay Campus

紅磡灣校園

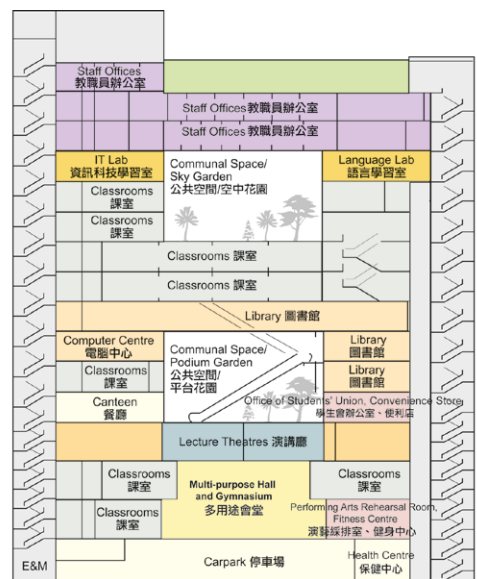
(8 Hung Lok Road, Hung Hom, Kowloon, Hong Kong
香港九龍紅磡紅樂道8號)



The West Kowloon Campus

西九龍校園

(9 Hoi Ting Road, Yau Ma Tei, Kowloon, Hong Kong
香港九龍油麻地海庭道9號)



Our Motto

To learn and to apply, for the benefit of mankind.

Our Vision

Be a leading university that excels in professional education, applied research and partnership for the betterment of Hong Kong, the nation and the world.

Our Mission

1. To nurture graduates who are critical thinkers, effective communicators, innovative problem solvers, lifelong learners and ethical leaders.
2. To advance knowledge and the frontiers of technology to meet the changing needs of society.
3. To support a University community in which all members can excel through education and scholarship.

校訓

開物成務 勵學利民

願景

成為一所在專業教育、應用研究及夥伴協作方面表現卓越的大學，為香港、國家及世界作出貢獻。

使命

1. 培育敏於思辨、善於溝通、富於創見、精於解難、樂於學習、立於仁德的領導人才。
2. 推動知識創新，拓展科技前沿，以回應不斷變化的社會需求。
3. 營造優良的大學環境，讓員生透過教育及學術追求卓越。

CONTACT INFORMATION 聯絡資料

The Hong Kong Polytechnic University
Hung Hom
Kowloon
Hong Kong

香港理工大學
紅磡
九龍
香港

Tel 電話 : (852) 2766 5111

Compiled by Office of the Deputy President and Provost
December 2014

常務及學務副校長室編製
二零一四年十二月