



Hong Kong PhD Fellowship Scheme 2023/2024

The Faculty of Engineering

- Consists of a distinguished group of internationally-renowned researchers
- Provides a collaborative and inter-disciplinary research environment of high application value
- Supported by world-class facilities and equipment

PolyU's Hong Kong PhD Fellowship Scheme (HKPFS) Package

Successful HKPFS awardees of PolyU will receive for the entire normal study period:

- Annual Stipend: HK\$325,200 (~US\$41,690)**
- Research Excellence Scholarship:** in the form of a **tuition fee waiver**
- Annual Conference Grant: HK\$13,600 (~US\$1,740)**
- Cash Award: HK\$40,000 (~US\$5,120)** for the first year, and **HK\$20,000 (~US\$2,560)** per year from the second year to the end of the normal study period
- University Accommodation:** a guaranteed place for 2 years

Nominated HKPFS candidates by PolyU to RGC will automatically be offered a PhD place with the award of:

- PolyU Presidential PhD Fellowship Scheme (PPFS); or
- PolyU Research Postgraduate Scholarship (PRPgS).

Opening Minds • Shaping the Future • 啟迪思維 • 成就未來

Department of Aeronautical and Aviation Engineering

Research Areas

- Aerodynamics
- Aerospace Propulsion and Combustion
- Aerospace Structures and Materials
- Aviation Engineering
- Flight Mechanics and Control
- Satellite Communication and Navigation



Enquiries:
Miss Samantha Sin
✉ samantha.sin@polyu.edu.hk



Department of Biomedical Engineering

Research Areas

- Medical Imaging and Biosensing
- Molecular and Cellular Engineering
- Neuromusculoskeletal Science and Engineering
- Prosthetics, Orthotics, and Rehabilitation Engineering



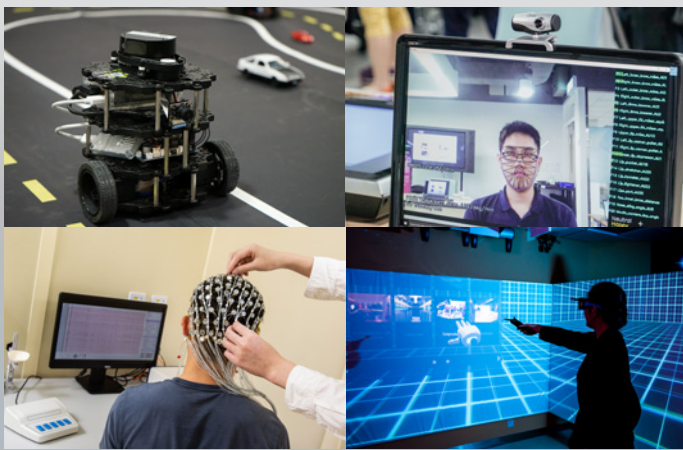
Enquiries:
Miss Dawn Li
✉ dawn.li@polyu.edu.hk



Department of Computing

Research Areas

- Artificial Intelligence and Big Data Computing
- Blockchain, Cyber Security and Privacy
- Graphics, Multimedia and Virtual Reality
- Networking and Mobile Computing
- Pattern Recognition and Natural Language Processing
- Systems Modelling and Software Engineering



Enquiries:
Ms Jolie Chick
✉ comp.phd@polyu.edu.hk



Department of Electrical Engineering

Research Areas

- Smart Grid and Renewable Energy
- Power Electronics and Electric Vehicles
- Smart Mobility and Intelligent Transportation
- Electricity Utilisation, Condition Monitoring and Asset Management
- Optical Fibres, Sensors and Communications
- Smart Materials, Devices and Applications



Enquiries:
Miss Anita Au
✉ anita.au@polyu.edu.hk



Department of Electronic and Information Engineering

Research Areas

- Future Wireless Networks, Intelligent Energy Systems and IoT
- Optical Communications and Networks
- Optics and Photonics
- Signal Processing and Artificial Intelligence
- Thin Film Optoelectronics



Enquiries:
Ms Vicky Hui
✉ vicky.hui@polyu.edu.hk



Department of Industrial and Systems Engineering

Research Areas

- Advanced Materials Processing Technologies
- Precision Engineering (State Key Laboratory of Ultra-precision Machining Technology)
- Aviation and Transportation Logistics
- Operations and Supply Chain Management
- Products Design and Miniaturization
- Smart Manufacturing and Robotics



Enquiries:
Mr Oliver Lee
✉ kin-hei-oliver.lee@polyu.edu.hk



Department of Mechanical Engineering

Research Areas

- Advanced Materials and Processing
- Aerospace Engineering
- Clean Energy and Energy Storage
- Robotics and Control
- Sound and Vibration
- Thermofluids and Combustion



Enquiries:
Ms Lily Tam
✉ lily.tam@polyu.edu.hk



Key Dates

Date	Milestones
1 September 2022 at Hong Kong Time 12:00 (GMT+8 hours)	Start of Application Period
1 December 2022 at Hong Kong Time 12:00 (GMT+8 hours)	Deadline for submitting initial applications to the Research Grants Council (RGC) by the applicants for allocation of reference numbers
1 December 2022 at Hong Kong Time 23:59 (GMT+8 hours)	Deadline for submission of full applications and payment of application fee through the eAdmission System of PolyU (http://www.polyu.edu.hk/admission)
April / May 2023	Notification of results by RGC via email

Each application received by PolyU will concurrently be processed as a normal application for PhD admission.
Remark: Information presented in this leaflet is subject to changes and does not form part of any contract between the University and any person.

Hong Kong PhD Fellowship Scheme:

- UGC's website: <https://cerg1.ugc.edu.hk/hkpfs/index.html>
- PolyU's website: <https://www.polyu.edu.hk/gs/prospective-students/hkpfs/>

PolyU Faculty of Engineering:

- www.polyu.edu.hk/feng





THE HONG KONG
POLYTECHNIC UNIVERSITY
香港理工大學

FACULTY OF
ENGINEERING
工程學院
WHERE CONCEPTS BECOME REALITY

Hong Kong PhD Fellowship Scheme 2023/2024

The Hong Kong Polytechnic University (PolyU) invites applications from the best and brightest students worldwide for the prestigious Hong Kong PhD Fellowship Scheme (HKPFS), established by the Research Grants Council (RGC) of Hong Kong in 2009, to pursue their full-time PhD studies.

The Faculty of Engineering

- Consists of a distinguished group of internationally-renowned researchers
- Provides a collaborative and inter-disciplinary research environment of high application value
- Supported by world-class facilities and equipment

PolyU's Hong Kong PhD Fellowship Scheme (HKPFS) Package

Successful HKPFS awardees of PolyU will receive for the entire normal study period:

- Annual Stipend:** HK\$325,200 (~US\$41,690)
- Research Excellence Scholarship: in the form of a **tuition fee waiver**
- Annual Conference Grant:** HK\$13,600 (~US\$1,740)
- Cash Award:** HK\$40,000 (~US\$5,120) for the first year, and HK\$20,000 (~US\$2,560) per year from the second year to the end of the normal study period
- University Accommodation:** a guaranteed place for 2 years

Nominated HKPFS candidates by PolyU to RGC will automatically be offered a PhD place with the award of:

- PolyU Presidential PhD Fellowship Scheme (PPPFS); or
- PolyU Research Postgraduate Scholarship (PRPgS).

The Hong Kong Polytechnic University (PolyU)

PolyU is dedicated to world-class excellence in impactful and interdisciplinary research, meeting societal needs for a sustainable future; and honouring intrinsic values in academic awareness and aspiration among research scholars.

- a government-funded university in the Hong Kong Special Administrative Region of the People's Republic of China;
- a long and proud history of providing internationally competitive professionally oriented education;
- a strong team of academic staff with solid experience in supervising research postgraduate students; and
- many of our Chair Professors / Professors being internationally leading experts in their research areas.



Opening Minds • Shaping the Future • 啟迪思維 • 成就未來



Hong Kong PhD Fellowship Scheme 2023/2024

Our Seven Departments are offering a wide range of research opportunities:

The PolyU Faculty of Engineering invites applications from Science and Engineering Graduates, with evidence of academic excellence, research ability and potential, cultural diversity, leadership ability and societal responsibilities, outstanding communication and interpersonal skills, for full-time PhD study in Hong Kong within the Hong Kong PhD Fellowship Scheme.

Candidates must satisfy the academic qualification and English language requirement of the University.

Department of Aeronautical and Aviation Engineering

Department of Aeronautical and Aviation Engineering carries out research aiming at enhancing the efficiency, safety and productivity of the booming aviation industry throughout the world.

Research Areas

- Aerodynamics
- Aerospace Propulsion and Combustion
- Aerospace Structures and Materials
- Aviation Engineering
- Flight Mechanics and Control
- Satellite Communication and Navigation



Enquiries:
Miss Samantha Sin
✉ samantha.sin@polyu.edu.hk



Department of Biomedical Engineering

The Department of Biomedical Engineering integrates engineering and life sciences to enable engineering innovations for biomedical applications.

Research Areas

- Medical Imaging and Biosensing
- Molecular and Cellular Engineering
- Neuromusculoskeletal Science and Engineering
- Prosthetics, Orthotics, and Rehabilitation Engineering



Enquiries:
Miss Dawn Li
✉ dawn.li@polyu.edu.hk

Department of Computing

The Department of Computing focuses on multidisciplinary research by strengthening our efforts in developing selected niche research areas that will ultimately lead to high impact in the field of technology transfer.

Research Areas

- Artificial Intelligence and Big Data Computing
- Blockchain, Cyber Security and Privacy
- Graphics, Multimedia and Virtual Reality
- Networking and Mobile Computing
- Pattern Recognition and Natural Language Processing
- Systems Modelling and Software Engineering



Enquiries:
Ms Jolie Chick
✉ comp.phd@polyu.edu.hk



Department of Electrical Engineering

The Department of Electrical Engineering is one of the premier departments of electrical engineering in Asia, which specialises in heavy current electrical engineering. We are well equipped with the latest and the most advanced facilities for cutting edge research in the field.

Research Areas

- Smart Grid and Renewable Energy
- Power Electronics and Electric Vehicles
- Smart Mobility and Intelligent Transportation
- Electricity Utilisation, Condition Monitoring and Asset Management
- Optical Fibres, Sensors and Communications
- Smart Materials, Devices and Applications



Enquiries:
Miss Anita Au
✉ anita.au@polyu.edu.hk

Department of Electronic and Information Engineering

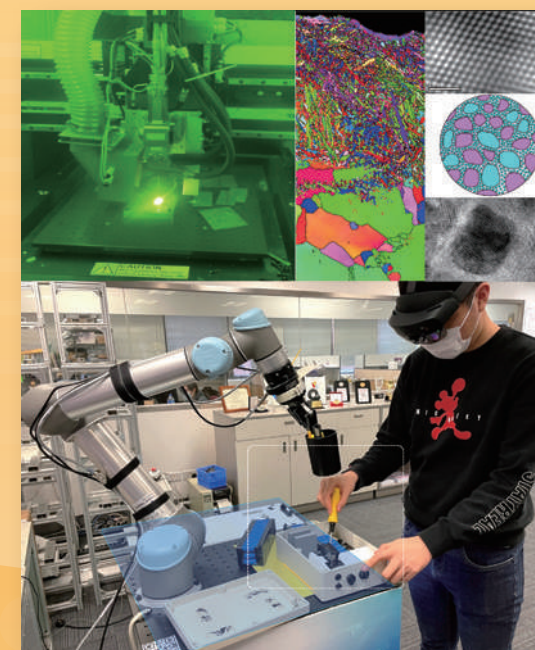
The Department of Electronic and Information Engineering is well equipped with state-of-the-art facilities for cutting edge R&D activities illustrated in various fields of electronic components and systems.

Research Areas

- Future Wireless Networks, Intelligent Energy Systems and IoT
- Optical Communications and Networks
- Optics and Photonics
- Signal Processing and Artificial Intelligence
- Thin Film Optoelectronics



Enquiries:
Ms Vicky Hui
✉ vicky.hui@polyu.edu.hk



Department of Industrial and Systems Engineering

The Department of Industrial and Systems Engineering offers a dynamic discipline that enables people to understand and solve complex technological, economic and social problems from a systems perspective.

Research Areas

- Advanced Materials Processing Technologies
- Precision Engineering (State Key Laboratory of Ultra-precision Machining Technology)
- Aviation and Transportation Logistics
- Operations and Supply Chain Management
- Products Design and Miniaturization
- Smart Manufacturing and Robotics



Enquiries:
Mr Oliver Lee
✉ kin-hei-oliver.lee@polyu.edu.hk

Department of Mechanical Engineering

The Department of Mechanical Engineering aspires to carry out high quality research of both fundamental and applied nature, and to develop cutting-edge technologies to meet the industrial and societal needs through active knowledge transfer.

Research Areas

- Advanced Materials and Processing
- Aerospace Engineering
- Clean Energy and Energy Storage
- Robotics and Control
- Sound and Vibration
- Thermofluids and Combustion



Enquiries:
Ms Lily Tam
✉ lily.tam@polyu.edu.hk

The Hong Kong Polytechnic University (PolyU) ranks high in the world in Engineering, Technology and Computer Science. We have achieved the following recognitions:

Best Global Universities Rankings 2022 by U.S. News and World Report

- 11th in the subject of "Engineering"
- 12th in the subject of "Mechanical Engineering"
- 26th in the subject of "Computer Science"
- 31st in the subject of "Electrical and Electronic Engineering"

Quacquarelli Symonds (QS) World University Rankings 2022

- 69th in the broad subject area of "Engineering and Technology"
- 74th in the subject of "Engineering - Mechanical, Aeronautical and Manufacturing"
- 76th in the subject of "Engineering - Electrical and Electronic"
- 92nd in the subject of "Computer Science and Information Systems"

Times Higher Education World University Rankings 2022

- 51st in the subject of "Engineering"
- 64th in the subject of "Computer Science"

Top Universities Rankings 2022 by Research.com - National Ranking

- 1st in the discipline of "Mechanical and Aerospace Engineering"
- 2nd in the discipline of "Engineering and Technology"
- 8th in the discipline of "Computer Science"
- 9th in the discipline of "Electronics and Electrical Engineering"

Academic Ranking of World Universities (ARWU) 2022

- 5th in the subject of "Transportation Science and Technology"
- 25th in the subject of "Mechanical Engineering"
- 44th in the subjects of "Aerospace Engineering" and "Computer Science and Engineering"
- 51st - 75th in the subjects of "Electrical and Electronic Engineering", "Materials Science and Engineering" and "Telecommunication Engineering"
- 76th - 100th in the subject of "Biomedical Engineering"

Field-Weighted Citation Impact of Artificial Intelligence (AI) research

- 8th, the highest ranking among Hong Kong universities under the study by Times Higher Education and supported by Elsevier's Scopus database

(Note: The respective subjects above cover the Faculty of Engineering as well as individual units across PolyU working in the area.)



Welcome to join us today!

Key Dates

Date	Milestones
1 September 2022 at Hong Kong Time 12:00 (GMT+8 hours)	Start of Application Period
1 December 2022 at Hong Kong Time 12:00 (GMT+8 hours)	Deadline for submitting initial applications to the Research Grants Council (RGC) by the applicants for allocation of reference numbers
1 December 2022 at Hong Kong Time 23:59 (GMT+8 hours)	Deadline for submission of full applications and payment of application fee through the eAdmission System of PolyU (http://www.polyu.edu.hk/admission)
April / May 2023	Notification of results by RGC via email



Each application received by PolyU will concurrently be processed as a normal application for PhD admission.

Hong Kong PhD Fellowship Scheme:

- UGC's website: <https://cerg1.ugc.edu.hk/hkpfs/index.html>
- PolyU's website: <https://www.polyu.edu.hk/gs/prospective-students/hkpfs/>



PolyU Faculty of Engineering: www.polyu.edu.hk/feng



Remark: Information presented in this leaflet is subject to changes and does not form part of any contract between the University and any person.

