



THE HONG KONG
POLYTECHNIC UNIVERSITY
香港理工大學

FACULTY OF
ENGINEERING
工程學院
WHERE CONCEPTS BECOME REALITY

Hong Kong PhD Fellowship Scheme 2026/2027

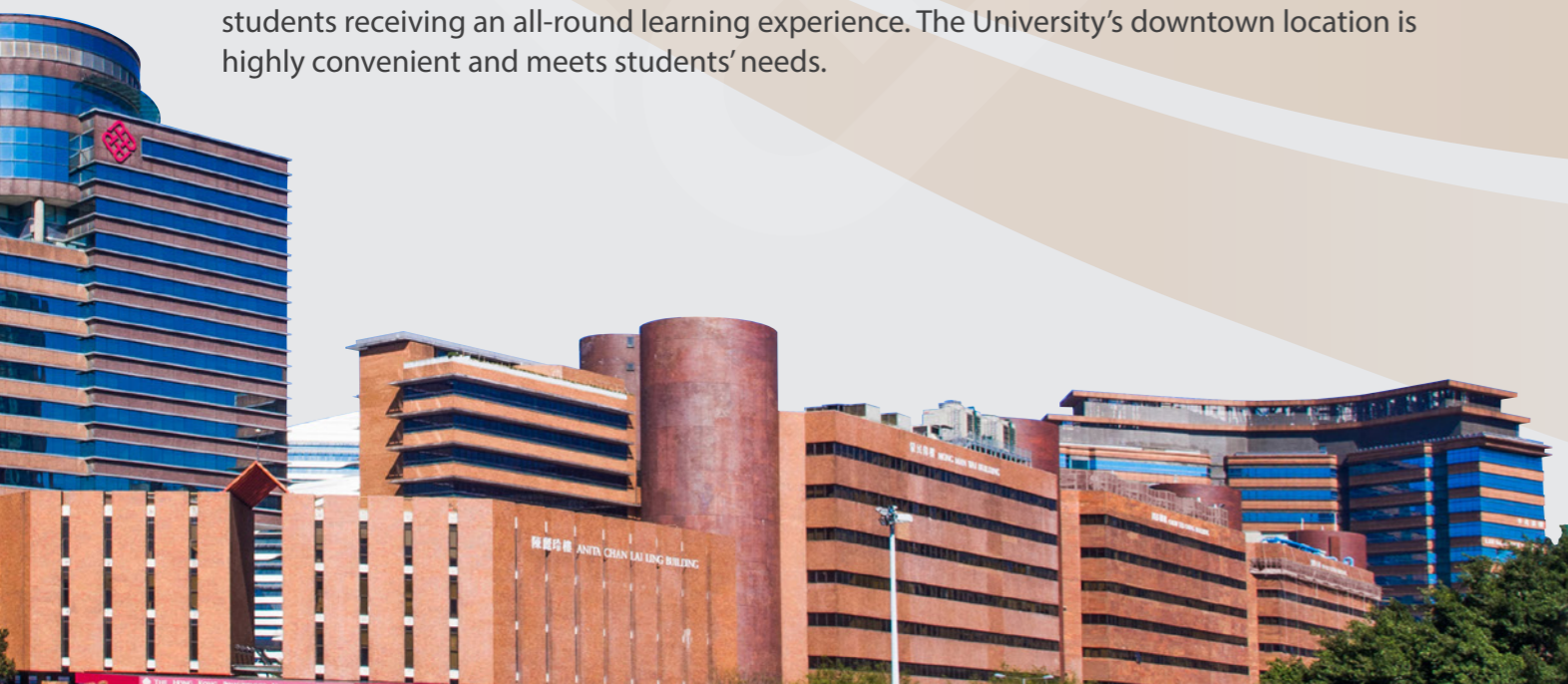
The Hong Kong Polytechnic University (PolyU) invites applications from the best and brightest students worldwide for the prestigious Hong Kong PhD Fellowship Scheme (HKPFS), established by the Research Grants Council (RGC) of Hong Kong in 2009, to pursue their full-time PhD studies.

The Hong Kong Polytechnic University (PolyU)

PolyU is dedicated to world-class excellence in impactful and interdisciplinary research, meeting societal needs for a sustainable future; and honouring intrinsic values in academic awareness and aspiration among research scholars.

- A government-funded university in the Hong Kong Special Administrative Region of the People's Republic of China;
- A long and proud history of providing internationally competitive professionally oriented education;
- A strong team of academic staff with solid experience in supervising research postgraduate students; and
- Many of our Chair Professors / Professors being internationally leading experts in their research areas.

The University has advanced research facilities and a diverse student population, with students receiving an all-round learning experience. The University's downtown location is highly convenient and meets students' needs.



The Faculty of Engineering

- Consists of a distinguished group of internationally-renowned researchers
- Provides a collaborative and inter-disciplinary research environment of high application value
- Supported by world-class facilities and equipment

PolyU's Hong Kong PhD Fellowship Scheme (HKPFS) Package

Successful HKPFS awardees of PolyU will receive for the entire normal study period:

- **Annual Stipend:** HK\$340,800 (~US\$43,692)
- Research Excellence Scholarship: in the form of a **tuition fee waiver**
- **Annual Conference Grant:** HK\$14,200 (~US\$1,820)
- **Cash Award:** HK\$40,000 (~US\$5,120) for the first year, and HK\$20,000 (~US\$2,560) per year from the second year to the end of the normal study period
- **University Accommodation:** a guaranteed place for 2 years

Nominated HKPFS candidates by PolyU to RGC will automatically be offered a PhD place with the award of:

- PolyU Presidential PhD Fellowship Scheme (PPPFs); or
- International PhD Fellowship Scheme (IPFS); or
- PolyU Research Postgraduate Scholarship (PRPgS).



The Hong Kong Polytechnic University (PolyU) ranks high in the world in Engineering and Technology. We have achieved the following recognitions:

Best Global Universities Rankings 2025 by the U.S. News and World Report

- 6th in the subject of "Engineering"
- 6th in the subject of "Mechanical Engineering"
- 28th in the subject of "Artificial Intelligence"
- 34th in the subject of "Electrical and Electronic Engineering"

Quacquarelli Symonds (QS) World University Rankings 2025

- 74th in the broad subject area of "Engineering and Technology"
- 40th in the subject of "Data Science and Artificial Intelligence"
- 49th in the subject of "Engineering–Mechanical, Aeronautical and Manufacturing"
- 65th in the subject of "Engineering–Electrical and Electronic"

Times Higher Education World University Rankings 2025

- 41st in the subject of "Engineering"

Best Universities Rankings 2025 by Research.com – World Ranking

- 7th in the discipline of "Engineering and Technology"
- 23rd in the discipline of "Mechanical and Aerospace Engineering"
- 56th in the discipline of "Electronics and Electrical Engineering"
- 57th in the discipline of "Materials Science"

Academic Ranking of World Universities (ARWU) 2024

- 2nd in the subject of "Transportation Science and Technology"
- 14th in the subject of "Mechanical Engineering"
- 31st in the subject of "Materials Science and Engineering"
- 42nd in the subject of "Telecommunication Engineering"
- 46th in the subject of "Electrical and Electronic Engineering"
- 49th in the subject of "Aerospace Engineering"
- 101st – 150th in the subject of "Biomedical Engineering"

(Note: The respective subjects above cover the Faculty of Engineering as well as individual units across PolyU working in the area.)

Welcome to join us today!

HKPFS Admission

**From 1 September 2025,
HKT 12:00 GMT +8 hours
to 1 December 2025,
HKT 12:00 GMT +8 hours**

Initial Application to RGC:

- Submit one initial application to the RGC HKPFS System to obtain an HKPFS reference number.
(<https://cerg1.ugc.edu.hk/hkpfs/InitApplication.jsp>)



**By 1 December 2025,
HKT 23:59 GMT +8 hours**

Full Application to PolyU:

- Submit full application(s)* to PolyU RPgAdmission System, select "2026/27 Semester 1 (Sept 2026 Entry)" and quote your HKPFS reference number. (<https://rpgadmission.polyu.edu.hk>)



* One full application for two research areas from the same PolyU department

* Two separate full applications for two programmes from two different PolyU departments

April to May 2026

Announcement of HKPFS result:

- Successful HKPFS candidates will be notified by RGC.

[Note: Dates are subject to changes by RGC.]

Hong Kong PhD Fellowship Scheme:

- UGC's website: <https://cerg1.ugc.edu.hk/hkpfs/index.html>



- PolyU's website: <https://www.polyu.edu.hk/gs/prospective-students/hkpfs/>



PolyU Faculty of Engineering: www.polyu.edu.hk/feng



Remark: Information presented in this leaflet is subject to changes and does not form part of any contract between the University and any person.



Hong Kong PhD Fellowship Scheme 2026/2027

Our Five departments are offering a wide range of research opportunities:

PolyU Faculty of Engineering invites applications from Science and Engineering Graduates, with evidence of academic excellence, strong research ability and potential, rich cultural diversity, exceptional leadership ability and devoted societal responsibilities, outstanding communication and interpersonal skills, for full-time PhD study in Hong Kong within the Hong Kong PhD Fellowship Scheme.

Candidates must satisfy the academic qualification and English language requirement of the University.



Department of Aeronautical and Aviation Engineering

The Department of Aeronautical and Aviation Engineering carries out research aiming at enhancing the efficiency, safety and productivity of the booming aviation industry throughout the world.

Research Areas

- Aerodynamics
- Aerospace Propulsion and Combustion
- Aerospace Structures and Materials
- Aviation Engineering
- Flight Mechanics and Control
- Satellite Communication and Navigation



Enquiries:
Ms Esther LEUNG
✉ esther.leung@polyu.edu.hk



Department of Biomedical Engineering

The Department of Biomedical Engineering integrates engineering and life sciences to enable engineering innovations for biomedical applications.

Research Areas

- Biomedical Imaging, Instrumentation, Sensing and AI
- Molecular, Cellular and Tissue Engineering
- Prosthetics, Orthotics, Smart Ageing and Rehabilitation Engineering
- Sports and Neuromusculoskeletal Engineering



Department of Electrical and Electronic Engineering

The Department of Electrical and Electronic Engineering is a leading academic department that conducts pioneering research in various fields related to electrical and electronic engineering. The Department is known for its innovative and cutting-edge research in many electrical and electronic engineering areas, such as Artificial Intelligence and Robotics; Communications and Information Security; Electric Vehicles and Smart Mobility; Microelectronics and Quantum Technology; Photonics, Smart Materials and Devices; and Power and Energy Systems. Its research activities are supported by state-of-the-art laboratories and facilities, and the Department has established collaborations with leading industries and research institutions around the world. The Department also has a strong commitment to education and is dedicated to training the next generation of engineers and researchers in the relevant fields.

Research Areas

- Artificial Intelligence and Robotics
- Communications and Information Security
- Electric Vehicles and Smart Mobility
- Microelectronics and Quantum Technology
- Photonics, Smart Materials and Devices
- Power and Energy Systems

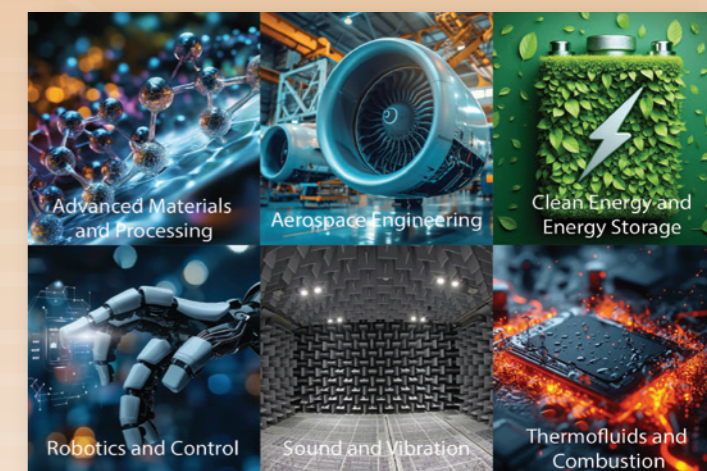
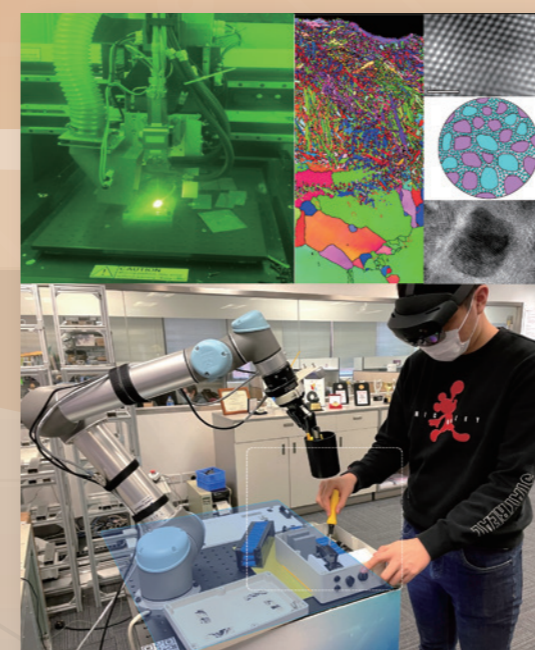


Department of Industrial and Systems Engineering

The Department of Industrial and Systems Engineering offers a dynamic discipline that enables individuals to understand and solve complex technological, economic and social problems from a system perspective.

Research Areas

- Advanced Materials Processing Technologies
- Precision Engineering (State Key Laboratory of Ultra-precision Machining Technology)
- Aviation and Transportation Logistics
- Operations and Supply Chain Management
- Products Design and Miniaturization
- Smart Manufacturing and Robotics



Department of Mechanical Engineering

The Department of Mechanical Engineering aspires to carry out high quality research of both fundamental and applied nature, and to develop cutting-edge technologies to meet the industrial and societal needs through active knowledge transfer.

Research Areas

- Advanced Materials and Processing
- Aerospace Engineering
- Clean Energy and Energy Storage
- Robotics and Control
- Sound and Vibration
- Thermofluids and Combustion



Enquiries:
Miss Dawn LI
✉ dawn.li@polyu.edu.hk



Enquiries:
Miss Vicky HUI
✉ vicky.hui@polyu.edu.hk



Enquiries:
Mr Oliver LEE
✉ kin-hei-oliver.lee@polyu.edu.hk



Enquiries:
Ms Lily TAM
✉ lily.tam@polyu.edu.hk