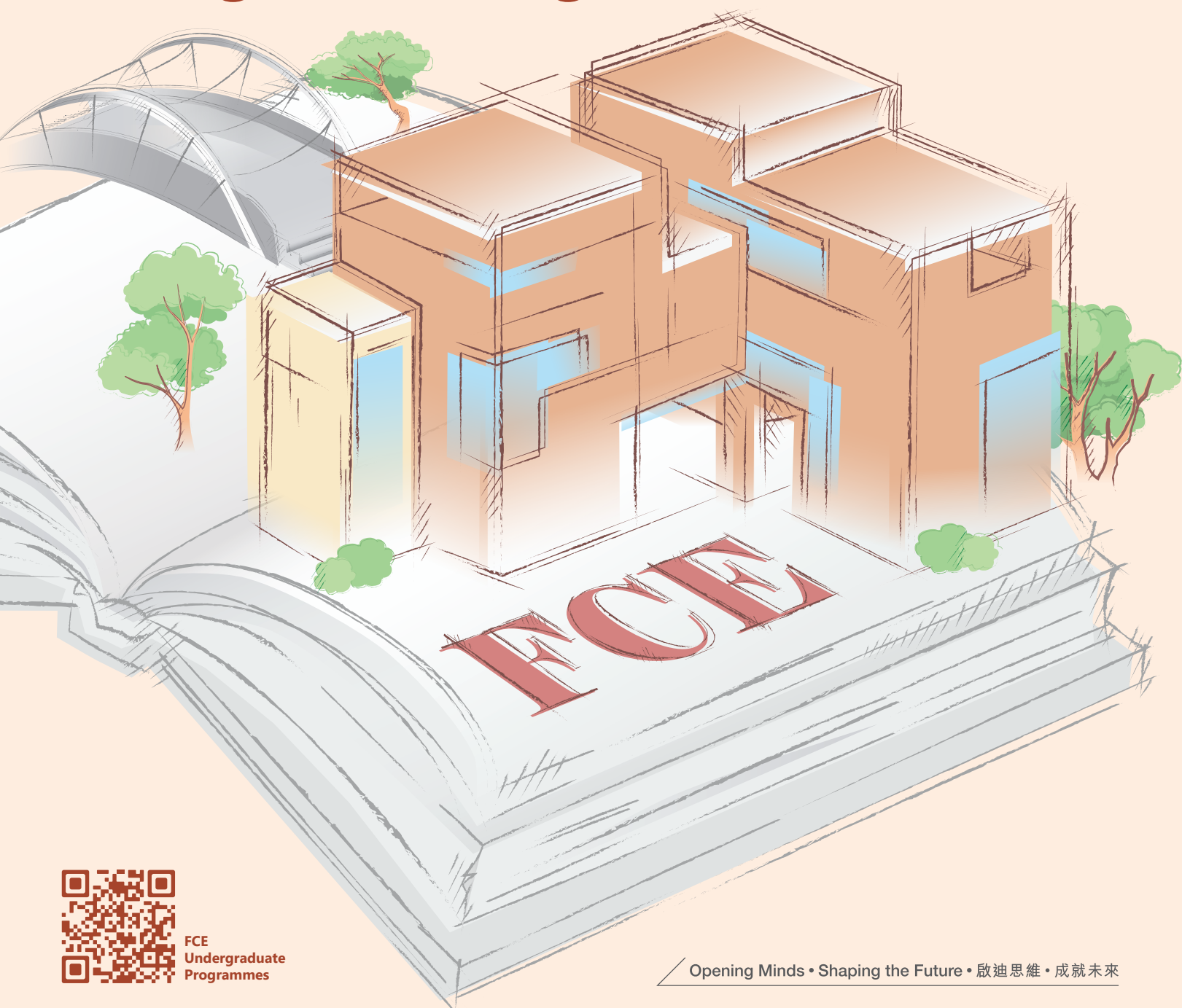


Faculty of Construction and Environment

Undergraduate Programmes



FCE
Undergraduate
Programmes

Opening Minds • Shaping the Future • 啟迪思維 • 成就未來

Faculty of Construction & Environment 建設及環境學院

The Faculty of Construction and Environment (FCE) has the largest concentration of expertise in Hong Kong in construction and environment-related disciplines. Organised into five departments[#] with distinct themes, FCE offers a wide range of academic programmes leading to both undergraduate and postgraduate degrees.

Rankings

Distinguished by a culture of excellence, our academics actively engage in the pursuit of knowledge and innovation. PolyU ranks among the world's top 100 institutions and the disciplines offered by FCE are highly regarded in global rankings of academic subjects.

WORLD RANKINGS

[^] **2nd**
Civil
Engineering

*** 17th**
Architecture &
Built Environment

*** 17th**
Civil & Structural
Engineering

*** 27th**
Environmental
Sciences

RANKINGS IN HONG KONG

^ 1st
Civil
Engineering

*** 2nd**
Architecture &
Built Environment

*** 2nd**
Civil & Structural
Engineering

*** 1st**
Environmental
Sciences

[#]The Department of Architecture has been approved to be established on 1 July 2026.

[^]US News and World Report – Best Global Universities Rankings 2025-26

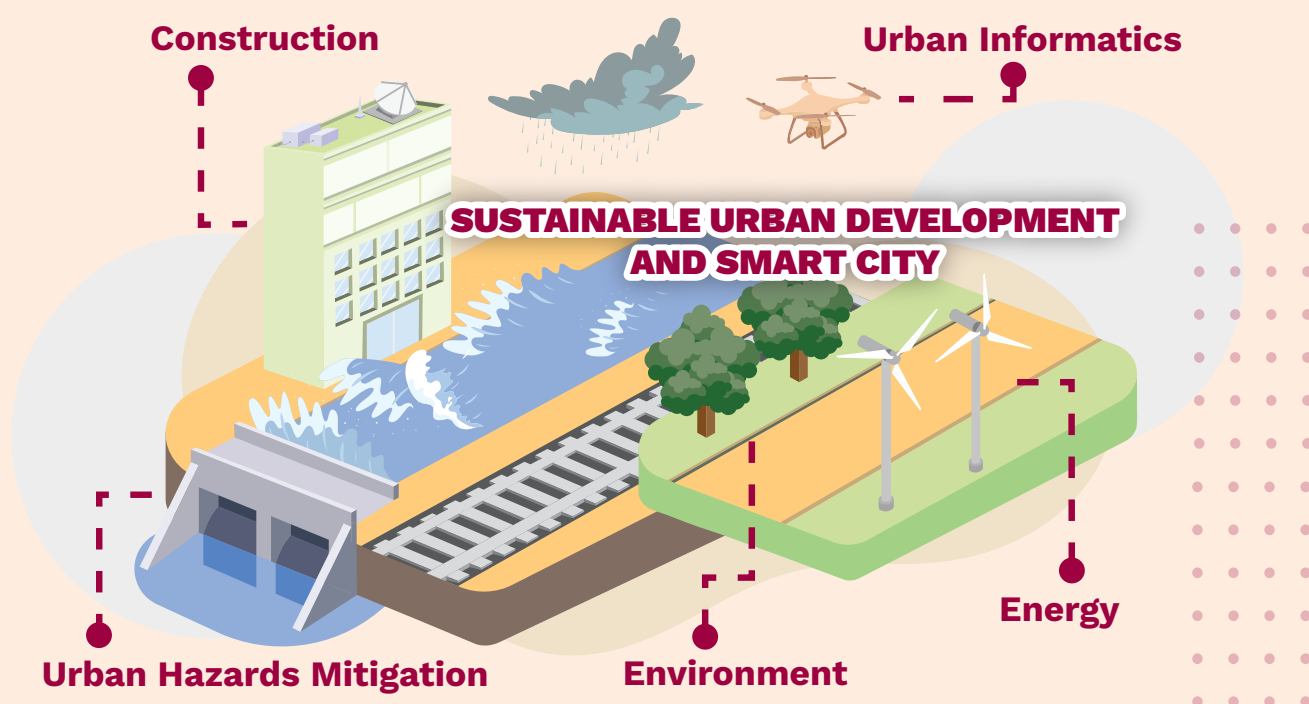
^{*}QS World University Rankings by Subject 2025

Professional Accreditations

Most of FCE's programmes are accredited/recognised by professional organisations, for example:

- Chartered Institution of Building Services Engineers, the United Kingdom (CIBSE)
- Chartered Institution of Civil Engineering Surveyors, the United Kingdom (CICES)
- The Hong Kong Institution of Engineers (HKIE)
- The Hong Kong Institute of Surveyors (HKIS)
- Institution of Occupational Safety and Health, the United Kingdom (IOSH)
- Royal Institution of Chartered Surveyors, the United Kingdom (RICS)

For details on the professional accreditation/recognition, please refer to the respective leaflets of each scheme/programme.



Career Prospects


FCE's programmes prepare students for professional careers and leadership positions in a range of disciplines. Virtually all aspects of construction from land, building, quantity and general practice surveying to environmental engineering, architectural design, building and civil engineering design, to actual construction and its management, to repair, refurbishment as well as the operation and management of built facilities are covered by the Faculty's programmes and its research activities. We work closely with industry to ensure our programmes are relevant and meet the changing needs of society. Thousands of our graduates have established themselves in various sectors of the construction industry and environmental field in Hong Kong and beyond.

FOLLOW US

 Faculty of Construction and Environment

 polyufce

 www.polyu.edu.hk/fce

 (852) 3400-8496

 faculty.ce@polyu.edu.hk



FCE Undergraduate
Programmes



FCE Taught Postgraduate
Programmes

List of Undergraduate Degree Schemes / Programmes Offered (2026/27 Admission)

Faculty / Department	Scheme / Programme Title
FCE Faculty of Construction and Environment	Bachelor's Degree Scheme in Construction and Environment (JS3004) Our Bachelor's Degree Scheme provides one entry in application for a choice of nine Majors , offering students the time and flexibility to explore various fields related to construction and environment, helping them make informed decisions about their preferred programme towards the end of their first year of studies and preparing them for professional careers in the construction industry and environmental field. Students will gain one of the following awards upon successful completion of the programme: <ul style="list-style-type: none"> • BSc (Hons) in Architectural Studies • BEng (Hons) in Building Sciences and Engineering • BSc (Hons) in Building Engineering and Management • BSc (Hons) in Surveying • BEng (Hons) in Civil Engineering • BEng (Hons) in Civil Engineering (Smart Mobility) with a Secondary Major in AIDA¹ • BEng (Hons) in Environmental Engineering and Sustainable Development • BSc (Hons) in Land Surveying and Geo-Informatics • BSc (Hons) in Urban Informatics and Smart Cities
ARCH Department of Architecture [#]	BSc (Hons) in Architectural Studies (JS3214)
BEEE Department of Building Environment and Energy Engineering	BEng (Hons) in Building Sciences and Engineering (JS3211)
BRE Department of Building and Real Estate	BSc (Hons) in Building Engineering and Management (JS3791) BSc (Hons) in Surveying (JS3789)
CEE Department of Civil and Environmental Engineering	BEng (Hons) in Civil Engineering (JS3739) BEng (Hons) in Environmental Engineering and Sustainable Development (JS3375) BSc (Hons) in Environmental and Occupational Safety and Health (31470) (2-year full-time articulation degree)
LSGI Department of Land Surveying and Geo-Informatics	BSc (Hons) Scheme in Spatial Data Science and Smart Cities (Land Surveying and Geo-Informatics / Urban Informatics and Smart Cities) (JS3130)

¹ The programme is only offered in conjunction with the Secondary Major in Artificial Intelligence and Data Analytics (AIDA).

[#] The Department of Architecture has been approved to be established on 1 July 2026.

Minimum General Entrance Requirements

Joint University Programmes Admissions System (JUPAS):

HKDSE Subjects	Core Subjects				Elective Subjects (including M1/M2)	
	Chinese Language	English Language	Mathematics	Citizenship and Social Development	1 st Elective	2 nd Elective
Level Requirement	3	3	2	Attained	3	3

International Qualifications (Non-country specific):

GCE A-level / International A-level	3 GCE A-Level / International A-Level subjects (Applicants who gain admission typically attain at least 3B in 3 AL subjects.)
International Baccalaureate (IB)	IB Diploma (Applicants who gain admission typically attain an IB score of 32 or above out of 45.)

Non-local applicants are also required to meet the English language requirements, for example:

- A score of 80 or above in the Test of English as a Foreign Language Internet-based test (TOEFL iBT), in one sitting
- An overall band score of 6.0 in the International English Language Testing System (IELTS) Academic Module, in one sitting

Non-JUPAS and Joint Entrance Examination (JEE):

Please visit www.polyu.edu.hk/study/ug/admissions for more information.



4-year Undergraduate Degree Curriculum Framework

The overall credit requirements under the 4-year undergraduate degree structure are as follows:

Minimum Credit Requirement for Graduation 120 credits

- General University Requirements (GUR) 27 credits
- Major 54 - 87 credits
- Free Electives Minimum 6 credits

General University Requirements 27 credits

	Credit
CAR Cluster-Area Requirements	9
LCR Language and Communication Requirements	9
SL Service-Learning	3
LEAD Leadership Education and Development	3
AIDA Artificial Intelligence and Data Analytics Requirement	2
IE Innovation and Entrepreneurship Requirement	1
Healthy Lifestyle	Non-Credit bearing

Major 54-87 credits

- Capstone Projects
- Work-Integrated Education (WIE)
- Common underpinning subject(s) for the Broad Discipline
- Discipline-Specific subjects for Major Study
- Professionals in Society
- Include a minimum of 2 credit Discipline-Specific Language Requirements (2 credits in English)*

Free Electives Minimum 6 credits

(Optional) Secondary Major/ Minor Study Remaining credits

	Credit
Secondary Major	36
Minor Study	18

Entry Scholarships for Undergraduate Admissions

(I) Academic Scholarships

Local Joint University Programmes Admissions System (JUPAS) Applicants

PolyU Academic Scholarships for Students with HKDSE Qualification

Tier	HKDSE Requirement [#]	Scholarship Amount ^{##}
Presidential Scholarship	Level 5** in 6 subjects or above	HK\$500,000 for the entire undergraduate study (subject to meeting the required conditions for scholarship renewal) plus exchange scholarships including a subsidy to OxBridge of up to HK\$80,000 plus an Undergraduate Research and Innovation Scheme (URIS) scholarship of up to HK\$50,000
Tier 1	Level 5** in 5 subjects	Renewable full-tuition scholarship with a renewable allowance of HK\$50,000 (subject to meeting the required conditions for scholarship renewal) plus exchange scholarships including a subsidy to OxBridge of up to HK\$80,000 plus an Undergraduate Research and Innovation Scheme (URIS) scholarship of up to HK\$50,000
Tier 2	Level 5** in 4 subjects	One-off full-tuition scholarship with an allowance of HK\$15,000 plus an Undergraduate Research and Innovation Scheme (URIS) scholarship of up to HK\$50,000
Tier 3	Level 5** in 3 subjects	One-off full-tuition scholarship plus an Undergraduate Research and Innovation Scheme (URIS) scholarship of up to HK\$50,000
Tier 4	Level 5** in 2 subjects	One-off half-tuition scholarship

FCE Entry Scholarship for Outstanding HKDSE Students[^]

Tier	HKDSE Scores ⁺ (Any best 5 subjects)	Scholarship Amount ^{##}
Tier 1	30 or above	One-off scholarship of HK\$30,000
Tier 2	28 - < 30	One-off scholarship of HK\$20,000
Tier 3	26 - < 28	One-off scholarship of HK\$15,000
Tier 4	25 - < 26	One-off scholarship of HK\$10,000

[#] Students meeting more than one of the HKDSE requirements listed will be awarded the better tier of scholarship.

^{##} A student can concurrently hold more than one scholarship administered by the University in an academic year if the total value of scholarships received by him/her does not exceed his/her annual tuition fee payable plus an allowance of HK\$50,000 unless otherwise stipulated.

[^] Awarded students who are in financial need, as proven by any approved grant provided under the Tertiary Student Finance Scheme – Publicly-funded Programmes (TSFS), may receive the "FCE Bursary for Outstanding HKDSE Students" of an additional amount of HK\$10,000 for all tier levels, upon submission of an application form together with a copy of TSFS's Notification of Result.

⁺ For the purpose of calculating the admission scores, HKDSE level attainments will be converted to level points where Level 5**=8.5, 5*=7, 5=5.5, 4=4, 3=3, 2=2, 1=1 and Unclassified = 0.

Local Non-JUPAS / International Applicants

Tier	IB Score Requirements	Scholarship Amount	GCEAL / IAL Requirements (Excluding Chinese Subject)	Scholarship Amount ^{##}
Presidential Scholarship	45	Renewable full-tuition scholarship with a renewable allowance of HK\$65,000 (subject to meeting the required conditions for scholarship renewal) plus an Undergraduate Research and Innovation Scheme (URIS) scholarship of up to HK\$50,000	5A [*]	Renewable full-tuition scholarship with a renewable allowance of HK\$50,000 (subject to meeting the required conditions for scholarship renewal) plus an Undergraduate Research and Innovation Scheme (URIS) scholarship of up to HK\$50,000
Tier 1	43 - 44	Renewable full-tuition scholarship with a renewable allowance of HK\$50,000 (subject to meeting the required conditions for scholarship renewal) plus an Undergraduate Research and Innovation Scheme (URIS) scholarship of up to HK\$50,000	4A [*]	Renewable full-tuition scholarship with a renewable allowance of HK\$15,000 (subject to meeting the required conditions for scholarship renewal) plus an Undergraduate Research and Innovation Scheme (URIS) scholarship of up to HK\$50,000
Tier 2	41 - 42	Renewable full-tuition scholarship with a renewable allowance of HK\$15,000 (subject to meeting the required conditions for scholarship renewal) plus an Undergraduate Research and Innovation Scheme (URIS) scholarship of up to HK\$50,000	3A [*]	Renewable full-tuition scholarship
Tier 3	39 - 40	Renewable full-tuition scholarship	-	-

International Applicants

The entry scholarships usually cover the normal duration of your scheme/programme and are subject to meeting the required conditions for scholarship renewal.

To further strengthen and enhance our diverse undergraduate student body, the Cultural Ambassador Scholarship is set up for selected non-local students. A scholarship of up to HK\$50,000 per year is awarded to selected students. Recipients are required to work together with the Global Engagement Office, reaching out to international prospective students and parents to promote our undergraduate programmes and schemes.

The Faculty also offers tuition waiver scholarships to eligible international applicants via FCE International Student Scholarship Scheme. The scholarships are renewable every year subject to students' academic performance at PolyU.

内地应届高考生 Joint Entrance Examination (JEE)

申请人如在应届高考成绩优异，或在个别课程的申请人中成绩优秀，并符合本校的要求，可获得理大、个别学系、政府或捐赠人士所提供的入学奖学金，金额最高为相等于攻读本科课程正常修业期内的学费，每年65,000港元的生活津贴以及高达50,000港元的「本科生科研计划」奖学金及项目资助。

(II) Non-academic Scholarships

PolyU embraces students with special talents in Sports, Arts and Culture, Leadership and Community Services, and STEM through the Special Talents Admission and Recognition Scheme (STARS). The scheme serves as an alternative admission route for students whose exceptional achievements cannot be fully reflected in their academic studies.

Scholarship Description	Scholarship Amount [@]	
	For Local Students	For Non-Local Students
The STARS Scholarships recognise talents in four specific areas: <ul style="list-style-type: none">• Sports,• Arts and Culture,• Leadership and Community Services• STEM	Tier 1: Renewable scholarship of HK\$100,000	Tier 1: Full-tuition scholarship plus living allowance per year
	Tier 2: Renewable scholarship of HK\$60,000	Tier 2: Full-tuition scholarship per year
	Tier 3: Renewable scholarship of HK\$30,000	
	Tier 4: Renewable scholarship of HK\$10,000	Tier 3: Half-tuition scholarship per year

[@]Subject to meeting the required conditions for scholarship renewal.

Non-Local Learning Activities

PolyU is dedicated to developing students with global competence and international perspectives. It encourages undergraduates to engage in exchange activities, summer programmes, conferences, competitions, and study tours. The University supports these international learning experiences by offering financial assistance to help students broaden their horizons and become global citizens.

Please visit the Global Engagement Office website (<https://www.polyu.edu.hk/geo/>) for details.

FCE Global Learning Scheme

The Faculty has established the Global Learning Scheme to encourage and support students currently enrolled in its Bachelor's level programmes to participate in non-local learning activities. On top of the University's financial assistance, eligible students can receive a one-off financial subsidy from the Faculty to cover the related expenses of participating in non-local learning activities.



Category	Subsidy for Airfare	Subsistence Allowance	Range of <u>Total</u> Subsidy
<ul style="list-style-type: none">• Non-local WIE• Outbound exchange programme• Outgoing 2+2 programme	<ul style="list-style-type: none">• Asia: HK\$1,000• Non-Asia: HK\$3,000	<ul style="list-style-type: none">• Four weeks or summer term: HK\$4,000• One semester: HK\$10,000• One academic year: HK\$20,000• Two academic years (applicable to 2+2 programme only): HK\$40,000	HK\$5,000 - HK\$43,000
<ul style="list-style-type: none">• Non-local CAR subject• Non-local SL subject• Non-local learning experience with a minimum duration of 7 days, e.g., study tour, international conference, etc.	<ul style="list-style-type: none">• Asia: HK\$1,000• Non-Asia: HK\$3,000	N/A	HK\$1,000 - HK\$3,000

Source of information: Study@PolyU and the website of the Global Engagement Office (PolyU)

PolyU reserves the right to change the terms or withdraw the scholarships. In case of any dispute/disagreement, the University's decision is final. This leaflet contains information known as of September 2025. Contents of this leaflet are subject to review and change without prior notice.



THE HONG KONG
POLYTECHNIC UNIVERSITY
香港理工大學



Faculty of Construction and Environment
建設及環境學院

FCE

Faculty of
Construction and Environment

Bachelor's Degree Scheme in Construction and Environment 建設及環境組合學士課程

CODE

JS3004

STUDY MODE

Full-time

DURATION

4 years

CREDIT REQUIRED

Please refer to the respective leaflets.

Aims and Characteristics

At PolyU, innovation and technology drive an academic environment that fosters national pride, social responsibility, and a global mindset. Our Bachelor's Degree Scheme offers students the time and flexibility to explore various fields related to construction and environment, helping them to make informed decisions about their preferred programme towards the end of their first year of studies and to prepare for professional careers in the construction industry and the environmental field. For the specific aims and characteristics of the individual programmes and schemes, please refer to the respective leaflets.

Students will gain one of the following awards upon successful completion of the programme:

Bachelor's Degree Scheme in Construction and Environment 建設及環境組合 學士課程

BSc (Hons) in Architectural Studies
建築學(榮譽)理學士

BEng (Hons) in Building Sciences and Engineering¹
建築科學及工程學(榮譽)工學士

BSc (Hons) in Building Engineering and Management²
建築工程及管理學(榮譽)理學士

BSc (Hons) in Surveying
地產及建設測量學(榮譽)理學士

BEng (Hons) in Civil Engineering
土木工程學(榮譽)工學士

BEng (Hons) in Civil Engineering (Smart Mobility) with a Secondary Major in AIDA³
土木工程學(智能運輸)(榮譽)工學士副主修人工智能及數據分析

BEng (Hons) in Environmental Engineering and Sustainable Development
環境工程及可持續發展學(榮譽)工學士

BSc (Hons) in Land Surveying and Geo-Informatics²
土地測量及地理資訊學(榮譽)理學士

BSc (Hons) in Urban Informatics and Smart Cities
城市信息學及智慧城市(榮譽)理學士

¹ The options of a Secondary Major in Artificial Intelligence and Data Analytics (AIDA) or Innovation and Entrepreneurship (IE) are available.

² The option of a Secondary Major in Artificial Intelligence and Data Analytics (AIDA) is available.

³ The programme is only offered in conjunction with the Secondary Major in Artificial Intelligence and Data Analytics (AIDA).

Professional Recognition and Career Prospects

Undergraduate schemes/programmes at the Faculty of Construction and Environment prepare students for professional careers and leadership positions in a range of disciplines.

Most of our undergraduate schemes/programmes are accredited or recognised by professional organisations, for example, the Chartered Institution of Building Services Engineers (CIBSE) of the United Kingdom, the Chartered Institution of Civil Engineering Surveyors (CICES) of the United Kingdom, The Hong Kong Institution of Engineers (HKIE), The Hong Kong Institute of Surveyors (HKIS), and the Royal Institution of Chartered Surveyors (RICS) of the United Kingdom. For details on professional recognition, please refer to the respective leaflets of each scheme/programme.

Secondary Major Details

Some of our programmes offer students the opportunity to pursue a Secondary Major (Innovation and Entrepreneurship (IE) or Artificial Intelligence and Data Analytics (AIDA)), allowing them to further broaden their academic and career horizons. For details, please refer to the respective leaflets of each scheme/programme and visit <https://www.polyu.edu.hk/study/ug> for more information.

Source of information: Study@PolyU

This leaflet contains information known as of September 2025.

Contents of this leaflet are subject to review and change without prior notice.

Enquiries

Faculty of Construction and Environment

✉ faculty.ce@polyu.edu.hk

Facebook Faculty of Construction and Environment

☎ (852) 3400-8496

Instagram polyufce

🌐 www.polyu.edu.hk/fce





THE HONG KONG
POLYTECHNIC UNIVERSITY
香港理工大學



Faculty of Construction and Environment
建設及環境學院

ARCH

Department of
Architecture*

BSc (Hons) in Architectural Studies

建築學(榮譽)理學士

CODE

JS3214

STUDY MODE

Full-time

DURATION

4 years

CREDIT REQUIRED

120 (plus 2 training credits)

Aims

The programme will aim to produce architecture graduates who are capable of adopting advanced technologies and innovations in practice to support the growth of the construction industry. The proposed programme objectives will be to provide quality education to familiarise architecture students with the latest advanced technologies such as Artificial Intelligence (AI), Building Information Modelling (BIM) and Geographic Information Systems (GIS) related to architecture, construction, building materials and building services to respond to the challenges of sustainable development in the built environment. The uniqueness of this programme lies in its integration of knowledge and analytical tools, digital skills and transferable skills with design capabilities for the needs of the architecture profession. Students will be able to cultivate critical thinking and a research spirit in architectural design and problem-solving skills, adopting advanced technologies and innovation.

Characteristics

The curriculum will include advanced technologies such as Artificial Intelligence (AI) in architecture, data analytics, 3D printing, Cave Automatic Virtual Environment (CAVE), Augmented Reality/Virtual Reality (AR/VR) and Building Information Modelling (BIM). These technologies will be embedded in relevant technical subjects of the programme and the Architecture and Spatial Design Studios.

Practical training/internship (Work-Integrated Education) will be a compulsory element of the curriculum. Students usually undertake their internships during the summer period.

The Department maintains a mentorship scheme in which students are paired with senior figures in the construction and real estate industry to gain insights into professional practice.

The Department also operates a student exchange programme to provide students with opportunities to study abroad for one academic semester at universities in the UK, US, Australia, Canada, Singapore, Taiwan and Mainland China, etc.

All admitted students will embark on a Common Year One curriculum. Towards the end of year one, students can decide whether to continue with their initial choice or switch to another choice within the Faculty. Those who wish to change to another choice need to join a competitive process through a ranking assessment, which considers a combination of entrance qualification score, year one GPA, and interview performance.

Professional Recognition

Accreditation for the programme will be sought from the following institutions/organisations:

- The Hong Kong Institute of Architects (HKIA)
- Architects Registration Board (ARB) Part I (pre-professional)

Career Prospects

Graduates will easily find employment as professional trainees in architectural firms, construction companies and government departments such as the Architectural Services Department, the Buildings Department and the Housing Department, as well as other quasi-public organisations and private companies involved in urban planning and architectural development. The programme's emphasis on advanced construction technologies and management skills will prepare graduates for leadership roles and specialised positions within the Greater Bay Area and beyond. Graduates will be welcome to continue their studies in Master's degree programmes.

#The Department of Architecture has been approved to be established on 1 July 2026.

Source of information: *Study@PolyU*

This leaflet contains information known as of September 2025.

Contents of this leaflet are subject to review and change without prior notice.

Enquiries

Department of Architecture

✉ irene.wu@polyu.edu.hk

☎ (852) 3400-8121 / 3400-8120 / 3400-3819

🌐 www.polyu.edu.hk/study/ug/international/2026/js3214





THE HONG KONG
POLYTECHNIC UNIVERSITY
香港理工大學



Faculty of Construction and Environment
建設及環境學院

BEEE

Department of
Building Environment and
Energy Engineering

BEng (Hons) in Building Sciences and Engineering

建築科學及工程學(榮譽)工學士

CODE

JS3211

STUDY MODE

Full-time

DURATION

4 years

CREDIT REQUIRED

120 (plus 11 training credits)

Aims

We equip graduates with the technical and academic skills necessary to excel in the areas of building sciences and building services engineering. This programme addresses the demand for locally trained building services engineers with expertise in consultancy, contracting, building management, and research and development.

Our graduates possess a broad range of personal skills, including effective communication, critical thinking, independent learning, and innovative problem-solving.

Characteristics

Students learn the art and science of providing safe, healthy, and energy-efficient built environments with minimal adverse ecological impacts. They are presented with intellectual challenges that prepare them to become industry leaders.

Our students have the opportunity to work in teams, lead small projects, and engage in independent study while collaborating with highly qualified professional staff. They also have access to various types of design software and laboratory facilities equipped with the latest building science and engineering applications, such as Artificial Intelligence (AI) and big data for smart buildings.

We offer local and international summer placement opportunities, and students participating in our Student Exchange Programme can study for a semester at partner universities in the United States, Europe, Australia, Russia, Southeast Asia, or Mainland China. Our students frequently receive scholarships from professional bodies and major organisations in Hong Kong.

All admitted students will embark on a Common Year One curriculum. Towards the end of year one, students can choose to continue with their initial programme or switch to another within the Faculty. Those who wish to change programmes will need to participate in a competitive process, which includes a ranking assessment based on a combination of entrance qualification scores, year one GPA, and interview performance.

Professional Recognition

The Hong Kong Institution of Engineers (HKIE) has granted full accreditation to the BEng(Hons) in Building Sciences and Engineering.

Graduates of this programme may qualify for Scheme A training with the HKIE in the following disciplines: (i) Building Services, (ii) Fire, (iii) Environmental*, and (iv) Energy. The HKIE-accredited academic programmes in the Building Services discipline are reciprocally recognised by the Chartered Institution of Building Services Engineers (CIBSE) of the United Kingdom.

* Upon completion of specific elective subjects.

Career Prospects

Graduates of this programme have good career prospects in the building construction and real estate sectors. The rapid construction of new state-of-the-art buildings in Hong Kong has provided numerous attractive local employment opportunities. The programme's wide recognition has expanded these opportunities to Mainland China and overseas.

Graduates often begin their careers as trainee engineers in government departments, consulting firms, contracting companies, property management companies, and utility companies. First-class Honours graduates may also find research as an attractive option because the field of building development in Hong Kong has embraced advanced technologies that warrant in-depth investigation.

Secondary Major Details

Students in the BEng (Hons) in Building Sciences and Engineering programme have the option to pursue one of the following Secondary Major programmes:

- Secondary Major in Artificial Intelligence and Data Analytics (AIDA) or
- Secondary Major in Innovation and Entrepreneurship (IE)

Source of information: Study@PolyU

This leaflet contains information known as of September 2025.

Contents of this leaflet are subject to review and change without prior notice.

Enquiries

Department of Building Environment and Energy Engineering

✉ beee.enquiry@polyu.edu.hk

Facebook PolyU.BEEE

☎ (852) 2766-5847

Instagram PolyU_BEEE

🌐 www.polyu.edu.hk/beee



THE HONG KONG
POLYTECHNIC UNIVERSITY
香港理工大學



Faculty of Construction and Environment
建設及環境學院

BRE

Department of
Building and Real Estate

BSc (Hons) in Building Engineering and Management

建築工程及管理學(榮譽)理學士

CODE

JS3791

STUDY MODE

Full-time

DURATION

4 years

CREDIT REQUIRED

120 (plus 2 training credits)

Aims

This programme provides an excellent opportunity for students who would like to pursue an education in building engineering and construction management. The growing building construction industry in Hong Kong and neighbouring regions requires graduates who possess highly specialised skills in technology, management, and communication. Our students face intellectual challenges that promote self-development and enhance their problem-solving skills. Our well-trained graduates are in great demand as professional building engineers and construction managers because they can easily adapt to the changing needs of the construction industry and have developed the necessary expertise to plan, coordinate, supervise, and control complex building projects.

Characteristics

Students are required to take 120 credits and 2 training credits during this 4-year programme. The subjects include Building Engineering and Technology, Management, Construction Economics, Project Works, a Capstone Project, and Languages. Site visits and guest lectures are arranged throughout the course of study. Practical training/internship (Work-Integrated Education, WIE) is a compulsory element of the curriculum. Students usually undertake an internship during the summer period.

The Department maintains a mentorship scheme in which students are matched with senior professionals in the construction and real estate industry to gain insights into professional practice.

The Department also operates a student exchange programme, providing opportunities to study abroad for one academic semester at universities in the UK, USA, Australia, Canada, Singapore, Taiwan, Mainland China, etc.

All admitted students will embark on a Common Year One curriculum. Towards the end of year one, students can decide whether to continue with their initial choice or switch to another choice within the Faculty. Those who wish to change to another choice need to join a competitive process through a ranking assessment, which considers a combination of entrance qualification score, year one GPA, and interview performance.

Professional Recognition

The programme has been granted professional accreditation by the following institutions:

- Chartered Institute of Building, the United Kingdom (CIOB);
- Hong Kong Institute of Construction Managers (HKICM); and
- The Hong Kong Institution of Engineers (HKIE).

Career Prospects

Following appropriate training in industry, our graduates become building engineers and/or construction managers. Continued growth in Hong Kong's building and infrastructure development sector has provided ample opportunities for challenging and rewarding careers. Our graduates usually take positions with construction companies or real estate development companies.

Secondary Major Details

Students in the BSc (Hons) BEM programme have the option to pursue a Secondary Major in Artificial Intelligence and Data Analytics (AIDA).

Source of information: Study@PolyU

This leaflet contains information known as of September 2025.

Contents of this leaflet are subject to review and change without prior notice.

Enquiries

Department of Building and Real Estate

✉ irene.wu@polyu.edu.hk

📘 [hkpolyubre](https://www.hkpolyubre.hk)

☎ (852) 3400-8121 / 3400-8120 / 3400-3819

📷 [hkpolyubre](https://www.hkpolyubre.hk)

🌐 www.polyu.edu.hk/bre





THE HONG KONG
POLYTECHNIC UNIVERSITY
香港理工大學



Faculty of Construction and Environment
建設及環境學院

BRE

Department of
Building and Real Estate

BSc (Hons) in Surveying

地產及建設測量學(榮譽)理學士

CODE

JS3789

STUDY MODE

Full-time

DURATION

4 years

CREDIT REQUIRED

120 (plus 2 training credits)

Aims

This challenging programme aims to develop well-rounded and flexible graduates with fundamental knowledge and practical skills in the interdisciplinary professions of land management, real estate development and construction project management. The programme underpins surveying studies with the disciplines of economics and finance, law, management and technology, and cultivates a global mindset with international studies in the real estate and construction markets in China and overseas.

Students are well prepared to enter the professions of building surveying, general practice surveying (real estate), planning and development, property and facility management and quantity surveying (construction economics), and they have the full potential to take up leading and strategic roles in the professions and businesses of land, property and construction in future.

Characteristics

This is a professional degree programme with global and practical perspectives. Students learn about economics, law, finance and investment, management and technology in the construction and real estate context. Problem identification, problem solving and decision making are the focuses of the programme.

Students have close contact with the industry through guest lectures, company visits and site visits. Students undertake group and individual practical projects throughout their studies.

Practical training / Internship (Work-Integrated Education) is a compulsory element of the curriculum. Students usually undertake internships during the summer period.

The Department maintains a mentorship scheme in which students are matched with senior figures in the construction and real estate industry to gain insights into professional practice.

The Department also operates a student exchange programme to provide students with opportunities to study abroad for one academic semester at universities in the UK, USA, Australia, Canada, Singapore, Taiwan, Mainland China, etc.

All admitted students will embark on a Common Year One curriculum. Towards the end of year one, students can decide whether to continue with their initial choice or switch to another choice within the Faculty. Those who wish to change to another choice need to join a competitive process through a ranking assessment, which considers a combination of entrance qualification score, year one GPA, and interview performance.

Professional Recognition

The programme is professionally accredited by the Hong Kong Institute of Construction Managers (HKICM), The Hong Kong Institute of Surveyors (HKIS) and the Royal Institution of Chartered Surveyors of the United Kingdom (RICS).

Career Prospects

Our graduates readily find employment as professional trainees in various international surveying consultancies, property development companies, construction companies, government departments such as the Rating and Valuation Department, the Lands Department, the Housing Department, the Architectural Services Department and the Buildings Department, and in other large quasi-public organisations, such as the MTR, the Urban Renewal Authority and the Hong Kong Housing Society.

In recent years, some graduates have been recruited into business and financial institutions in the fields of asset and facility management. The majority of the graduating class has been offered employment before or shortly after the final examination.

Source of information: Study@PolyU

This leaflet contains information known as of September 2025.

Contents of this leaflet are subject to review and change without prior notice.

Enquiries

Department of Building and Real Estate

✉ irene.wu@polyu.edu.hk

📘 [hkpolyubre](https://www.facebook.com/hkpolyubre)

☎ (852) 3400-8121 / 3400-8120 / 3400-3819

📷 [hkpolyubre](https://www.instagram.com/hkpolyubre)

🌐 www.polyu.edu.hk/bre





THE HONG KONG
POLYTECHNIC UNIVERSITY
香港理工大學



Faculty of Construction and Environment
建設及環境學院

CEE

Department of
Civil and Environmental
Engineering

BEng (Hons) in Civil Engineering 土木工程學(榮譽)工學士

CODE

JS3739

STUDY MODE

Full-time

DURATION

4 years

CREDIT REQUIRED

120 (plus 9 practical training credits)

Aims and Characteristics

This programme aims to nurture well-rounded civil engineering graduates who are conversant in environmental, geotechnical, hydraulic, structural, and transportation engineering, as well as construction management. Graduates will be able to plan, design, construct, and manage interdisciplinary civil engineering projects incorporating complex commercial, environmental, social, and legal considerations.

All admitted students will embark on a Common Year One curriculum. Towards the end of year one, students can decide whether to continue with their initial choice or switch to another choice within the Faculty. Those who wish to change to another choice need to join a competitive process through a ranking assessment, which considers a combination of entrance qualification score, year one GPA, and interview performance.

Professional Recognition

This programme has been granted full accreditation by The Hong Kong Institution of Engineers (HKIE). As such, graduates of the programme are qualified for Corporate Membership in HKIE after appropriate training and are eligible to join HKIE's Scheme A training in the following disciplines:

- Civil Discipline
- Environmental Discipline
- Geotechnical Discipline
- Structural Discipline
- Logistics & Transportation Discipline (upon completion of specific elective subjects)

Career Prospects

The majority of our graduates embark upon rewarding careers in government departments and authorities, and as engineering consultants and construction contractors soon after graduation. After a few years of work experience, many graduates further advance their careers by sitting an examination to become professional engineers. Other graduates pursue higher degrees at prestigious overseas institutions.

Secondary Major Details

A specialised programme titled BEng (Hons) in Civil Engineering (Smart Mobility) with a Secondary Major in AIDA 土木工程學(智能運輸)(榮譽)工學士副主修人工智能及數據分析 is exclusively available to students who choose the Secondary Major in Artificial Intelligence and Data Analytics (AIDA).

Full accreditation will be sought for the programme from The Hong Kong Institution of Engineers (HKIE).

Graduates with a secondary major have a competitive edge when seeking positions with transport consultancies, public transport operators, Mobility-as-a-Service companies, and other positions in the field of smart mobility development and applications.

Source of information: Study@PolyU

This leaflet contains information known as of September 2025.

Contents of this leaflet are subject to review and change without prior notice.

Enquiries

Department of Civil and Environmental Engineering

✉ chi-ho-andy.mok@polyu.edu.hk

📘 [cee.hkpolyu](https://www.facebook.com/cee.hkpolyu)

☎ (852) 2766-4482

📷 [cee.hkpolyu](https://www.instagram.com/cee.hkpolyu)

🌐 www.polyu.edu.hk/cee





THE HONG KONG
POLYTECHNIC UNIVERSITY
香港理工大學



Faculty of Construction and Environment
建設及環境學院

CEE

Department of
Civil and Environmental
Engineering

BEng (Hons) in Environmental Engineering and Sustainable Development

環境工程及可持續發展學(榮譽)工學士

CODE

JS3375

STUDY MODE

Full-time

DURATION

4 years

CREDIT REQUIRED

120 (plus 9 practical training credits)

Aims and Characteristics

This is a unique programme that integrates elements of environmental engineering, environmental science, sustainable development, and carbon neutrality technologies and management. Graduates are equipped to develop practical solutions to environmental challenges, including water and waste management, air quality management, noise control, renewable energy, corporate sustainability strategies, circular economy practices, and sustainable urban development. They are also equipped to contribute to the formulation of policies that will lead to sustainable development.

All admitted students will embark on a Common Year One curriculum. Towards the end of year one, students can decide whether to continue with their initial choice or switch to another choice within the Faculty. Those who wish to change to another choice need to join a competitive process through a ranking assessment, which considers a combination of entrance qualification score, year one GPA, and interview performance.

Professional Recognition

This programme has been fully accredited by The Hong Kong Institution of Engineers (HKIE). As such, graduates of this programme are qualified for Corporate Membership in HKIE after appropriate training and are eligible to join HKIE's Scheme A training in the following disciplines:

- Environmental Discipline
- Logistics & Transportation Discipline
(upon completion of specific elective subjects)

Students will fulfil the academic requirements of a Safety Supervisor upon the completion of three specific safety subjects.

Career Prospects

The majority of our graduates embark upon rewarding careers in government departments and authorities or as engineering consultants and construction contractors soon after graduation. After a few years of work experience, many graduates further advance their careers by sitting an examination to become professional engineers. Other graduates pursue higher degrees at prestigious overseas institutions.

Source of information: Study@PolyU

This leaflet contains information known as of September 2025.

Contents of this leaflet are subject to review and change without prior notice.

Enquiries

Department of Civil and Environmental Engineering

✉ chi-ho-andy.mok@polyu.edu.hk

📘 cee.hkpolyu

☎ (852) 2766-4482

📷 cee.hkpolyu

🌐 www.polyu.edu.hk/cee



THE HONG KONG
POLYTECHNIC UNIVERSITY
香港理工大學



Faculty of Construction and Environment
建設及環境學院

CEE

Department of
Civil and Environmental
Engineering

BSc (Hons) in Environmental and Occupational Safety and Health

環境及職業安全與健康(榮譽)理學士

CODE

31470

STUDY MODE

Full-time

DURATION

2 years

CREDIT REQUIRED

65 (plus 4 practical training credits)

Aims

This programme is designed to respond to the increasing demand for local environmental and occupational safety and health legislation on the work environments of organisations, and to the demand for graduates who have the skills necessary to work in these focused professional areas. This application-oriented programme aims to provide additional full-time training opportunities to allow Higher Diploma/Associate Degree graduates to gain a full degree qualification and to equip graduates with skills that they can further develop in careers as professionals in the areas of environmental and occupational safety and health.

Characteristics

This programme is the only undergraduate degree programme in safety and health for the construction industry offered by a local university. The programme content can be broadly divided into two areas: environmental protection, and occupational safety and health. These interrelated areas are given equal weighting so that graduates are equipped with sufficient knowledge to tackle both environmental and occupational health and safety problems, as well as to develop and implement appropriate systems or preventive measures. The programme is hosted by the Department of Civil and Environmental Engineering. PolyU has extensive experience in the teaching and research in the areas of environmental and occupational health and safety.

Professional Recognition

On completion of the programme, graduates can fulfil the academic requirements for registration as a Registered Safety Officer (RSO) with the Labour Department, HKSAR and as an Environmental Officer (EO) for government contracts. In addition, they can apply for the membership of the Institution of Occupational Safety and Health of the United Kingdom (IOSH).

Career Prospects

Graduates can have a wide spectrum of career opportunities in public utility, construction companies, consultants, non-governmental organisations (NGOs) and other private companies.

Source of information: Study@PolyU

This leaflet contains information known as of September 2025.

Contents of this leaflet are subject to review and change without prior notice.

Enquiries

Department of Civil and Environmental Engineering

✉ sofi.mok@polyu.edu.hk

📘 cee.hkpolyu

☎ (852) 2766-4789

📷 cee.hkpolyu

🌐 www.polyu.edu.hk/cee



THE HONG KONG
POLYTECHNIC UNIVERSITY
香港理工大學



Faculty of Construction and Environment
建設及環境學院

LSGI

Department of
Land Surveying and
Geo-Informatics

BSc (Hons) Scheme in Spatial Data Science and Smart Cities (Land Surveying and Geo-Informatics / Urban Informatics and Smart Cities) 空間數據科學及智慧城市(榮譽)理學士組合課程 (土地測量及地理資訊學/城市信息學及智慧城市)

CODE

JS3130

STUDY MODE

Full-time

DURATION

4 years

BSc (Hons) Scheme in Spatial Data Science and Smart Cities 空間數據科學及智慧城市(榮譽)理學士 組合課程

BSc (Hons) in Land Surveying and Geo-Informatics 土地測量及地理資訊學(榮譽)理學士

*The option of a Secondary Major in Artificial Intelligence
and Data Analytics (AIDA) is available.*

BSc (Hons) in Urban Informatics and Smart Cities 城市信息學及智慧城市(榮譽)理學士

BSc (Hons) in Land Surveying and Geo-Informatics 土地測量及地理資訊學(榮譽)理學士

Characteristics

This programme equips students with skills in land surveying/geomatics, geo-information technology and utility surveying/management, enabling graduates to work competently and confidently as geographic information systems professionals in disciplines such as transport and logistics, environmental, socio-economic, commercial and construction surveying, or as utility professionals in a discipline related to the surveying, condition diagnosis, maintenance and management of underground facilities.

All admitted students will embark on a Common Year One curriculum. Towards the end of year one, students can decide whether to continue with their initial choice or switch to another choice within the Faculty. Those who wish to change to another choice need to join a competitive process through a ranking assessment, which considers a combination of entrance qualification score, year one GPA, and interview performance.

Aims

The aims of the LSGI Scheme are based on the philosophy that our graduates should be able to cope with the rapidly changing market conditions in Hong Kong, Mainland China, and the region, and with the demands of their future professions in land surveying, geo-information technology, utility management and surveying, as well as urban informatics and smart cities. The Department maintains close links with professional bodies and invites industry experts to give guest lectures to students whenever appropriate.

CREDIT REQUIRED

120 (plus 1 credit for industrial safety training and non-credit bearing summer training)

Professional Recognition

The BSc (Hons) in Land Surveying and Geo-Informatics programme is accredited by the Chartered Institution of Civil Engineering Surveyors (CICES), The Hong Kong Institution of Engineering Surveyors (HKInstES), The Hong Kong Institute of Surveyors (HKIS), The Malaysia Land Surveyors Board (LJT), The Land Surveyors Board of Singapore (LSB) and the Royal Institution of Chartered Surveyors (RICS).

Career Prospects

Graduates of the BSc (Hons) in Land Surveying and Geo-Informatics programme can become professional land surveyors, geo-information technology specialists or utility specialists.

Secondary Major Details

The option of a Secondary Major in Artificial Intelligence and Data Analytics (AIDA) is available to students of the BSc (Hons) in Land Surveying and Geo-Informatics.

BSc (Hons) in Urban Informatics and Smart Cities 城市信息學及智慧城市(榮譽)理學士

Characteristics

This programme enables students to address the various challenges of global cities related to the rapid process of urbanisation. The main objective of this programme is to educate students on the principles and theories of urban science and to equip them with practical skills in urban analytics so that they can leverage emerging urban big data technologies and values to better understand and serve smart cities.

All admitted students will embark on a Common Year One curriculum. Towards the end of year one, students can decide whether to continue with their initial choice or switch to another choice within the Faculty. Those who wish to change to another choice need to join a competitive process through a ranking assessment, which considers a combination of entrance qualification score, year one GPA, and interview performance.

CREDIT REQUIRED

120 (plus 1 credit for industrial safety training and non-credit bearing summer training)

Professional Recognition

The BSc (Hons) in Urban Informatics and Smart Cities programme is accredited by The Hong Kong Institute of Surveyors (HKIS) and the Royal Institution of Chartered Surveyors (RICS).

Career Prospects

Graduates of the BSc (Hons) in Urban Informatics and Smart Cities programme will have various employment opportunities in the public and private sectors in a wide range of areas related to smart city management, such as construction, telecommunication, information technology, urban planning, transportation and logistics, public health, environmental management, social welfare, finance and real estate.

Source of information: Study@PolyU

This leaflet contains information known as of September 2025.
Contents of this leaflet are subject to review and change without prior notice.

Enquiries Department of Land Surveying and Geo-Informatics

✉ lsgi.ug@polyu.edu.hk

☎ (852) 2766-5968

🌐 www.polyu.edu.hk/lsgi

📘 [LSGI.PolyU](https://lsgi.polyu.edu.hk)

📷 [lsgi.polyu](https://www.instagram.com/lsgi.polyu)



Faculty of Construction and Environment



ZS1201, 12/F, South Tower, Block Z
The Hong Kong Polytechnic University
Hung Hom, Kowloon, Hong Kong



faculty.ce@polyu.edu.hk



(852) 3400-8496



www.polyu.edu.hk/fce

FOLLOW US



Faculty of Construction and Environment



[polyufce](https://www.instagram.com/polyufce)



FCE
Website