

# Faculty of Construction and Environment

Undergraduate Programmes  
2025/26



FCE  
Undergraduate  
Programmes



**BEEE** Department of  
Building Environment and Energy Engineering



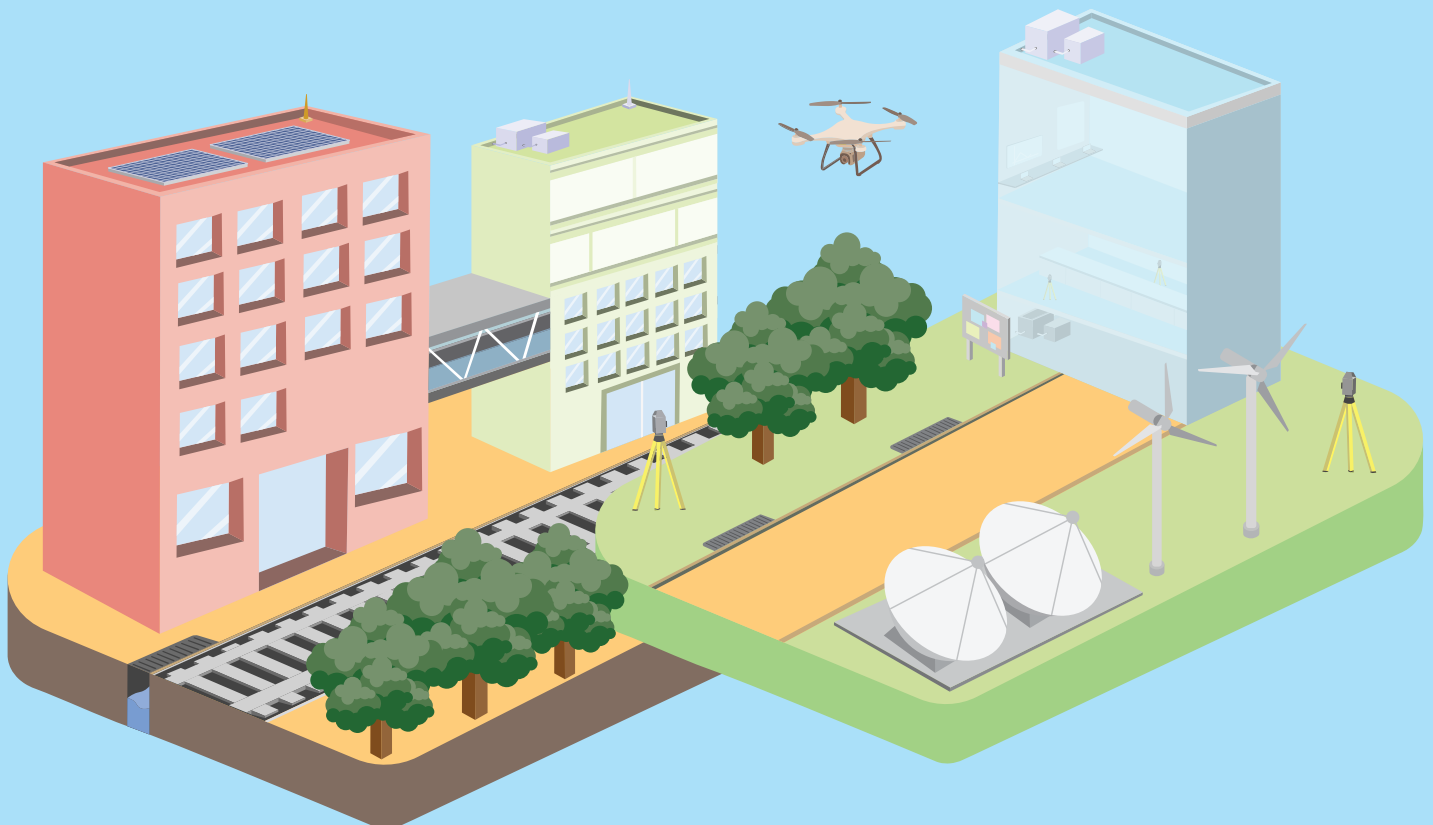
**BRE** Department of  
Building and Real Estate



**CEE** Department of  
Civil and Environmental Engineering



**LSGI** Department of  
Land Surveying and Geo-Informatics



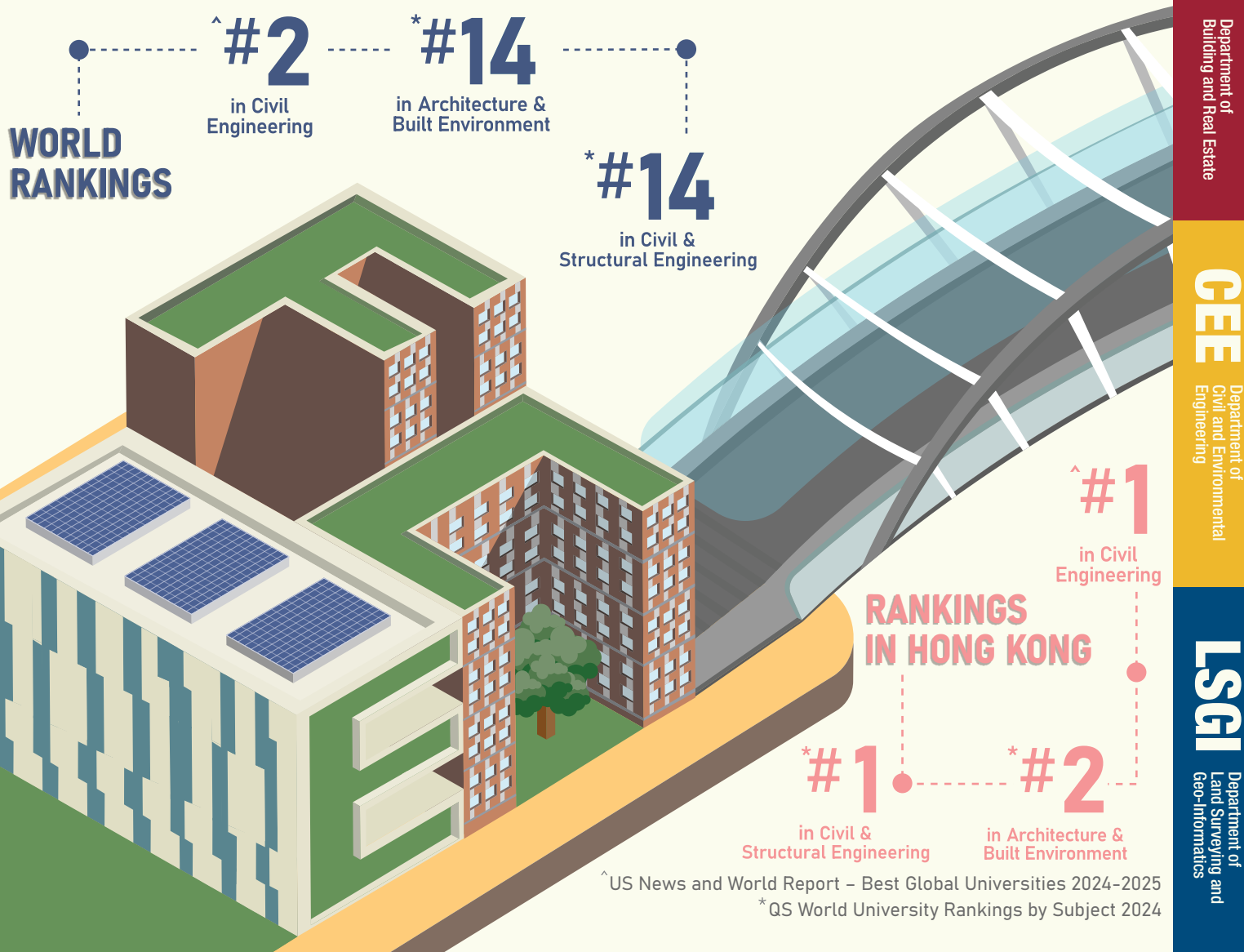
# Faculty of Construction and Environment

## 建設及環境學院

The Faculty of Construction and Environment (FCE) has the largest concentration of expertise in Hong Kong in construction and environment-related disciplines. Organised into four departments with distinct themes, FCE offers a wide range of academic programmes leading to both undergraduate and postgraduate degrees.

### Rankings

Distinguished by a culture of excellence, our academics actively engage in the pursuit of knowledge and innovation. PolyU ranks among the world's top 100 institutions and the disciplines offered by FCE are highly regarded in global rankings of academic subjects.



^ US News and World Report – Best Global Universities 2024–2025

\* QS World University Rankings by Subject 2024

## Professional Accreditations

Most of FCE's programmes are accredited/recognised by professional organisations, for example:

- Chartered Institution of Building Services Engineers, the United Kingdom (CIBSE)
- Chartered Institution of Civil Engineering Surveyors (CICES)
- The Hong Kong Institution of Engineers (HKIE)
- The Hong Kong Institute of Surveyors (HKIS)
- Institution of Occupational Safety and Health of the United Kingdom (IOSH)
- Royal Institution of Chartered Surveyors (RICS)

For details on the professional accreditation/recognition, please refer to the respective leaflets of each scheme/programme.




## Career Prospects

FCE's programmes prepare students for professional careers and leadership positions in a range of disciplines. Virtually all aspects of construction from land, building, quantity and general practice surveying to environmental engineering, building and civil engineering design, to actual construction and its management, to repair, refurbishment as well as the operation and management of built facilities are covered by the Faculty's programmes and its research activities. We work closely with industry to ensure our programmes are relevant and meet the changing needs of society. Thousands of our graduates have established themselves in various sectors of the construction industry and environmental field in Hong Kong and beyond.

### FOLLOW US

 Faculty of Construction and Environment

 polyufce

 [www.polyu.edu.hk/fce](http://www.polyu.edu.hk/fce)

 (852) 3400-8496 |  [faculty.ce@polyu.edu.hk](mailto:faculty.ce@polyu.edu.hk)



FCE Undergraduate  
Programmes



FCE Taught Postgraduate  
Programmes



## List of undergraduate degree schemes / programmes offered

Faculty / Department	Scheme / Programme title
<b>FCE</b> Faculty of Construction and Environment	<b>Bachelor's Degree Scheme in Construction and Environment (JS3004)</b> Our Bachelor's Degree Scheme <b>provides one entry in application for a choice of nine Majors</b> , offering students the time and flexibility to explore various fields related to construction and environment, helping them make informed decisions about their preferred programme towards the end of their first year of studies and prepare for professional careers in the construction industry and environmental field. Students will gain one of the following awards upon successful completion of the programme: <ul style="list-style-type: none"> <li>• BEng (Hons) in Building Sciences and Engineering</li> <li>• BSc (Hons) in Architectural Studies</li> <li>• BSc (Hons) in Building Engineering and Management</li> <li>• BSc (Hons) in Surveying</li> <li>• BEng (Hons) in Civil Engineering</li> <li>• BEng (Hons) in Civil Engineering (Smart Mobility) with a Secondary Major in AIDA<sup>1</sup></li> <li>• BEng (Hons) in Environmental Engineering and Sustainable Development</li> <li>• BSc (Hons) in Land Surveying and Geo-Informatics</li> <li>• BSc (Hons) in Urban Informatics and Smart Cities</li> </ul>
<b>BEEE</b> Department of Building Environment and Energy Engineering	BEng (Hons) in Building Sciences and Engineering (JS3211)
<b>BRE</b> Department of Building and Real Estate	BSc (Hons) in Architectural Studies (JS3214)
	BSc (Hons) in Building Engineering and Management (JS3791)
	BSc (Hons) in Surveying (JS3789)
<b>CEE</b> Department of Civil and Environmental Engineering	BEng (Hons) in Civil Engineering (JS3739)
	BEng (Hons) in Environmental Engineering and Sustainable Development (JS3375)
	BSc (Hons) in Environmental and Occupational Safety and Health (31470) (2-year full-time articulation degree)
<b>LSGI</b> Department of Land Surveying and Geo-Informatics	BSc (Hons) Scheme in Spatial Data Science and Smart Cities (Land Surveying and Geo-Informatics / Urban Informatics and Smart Cities) (JS3130)

<sup>1</sup> The programme is only offered in conjunction with the Secondary Major in Artificial Intelligence and Data Analytics (AIDA).

## Minimum general entrance requirements

Joint University Programmes Admissions System (JUPAS):

HKDSE Subjects	Core Subjects				Elective Subjects (including M1/M2)	
	Chinese Language	English Language	Mathematics	Citizenship and Social Development	1 <sup>st</sup> Elective	2 <sup>nd</sup> Elective
<b>Level Requirement</b>	3	3	2	Attained	3	3

## International qualifications (non-country specific):

### GCE A-level / International A-level

**3 GCE A-Level / International A-Level subjects**  
(Applicants who gain admission typically attain at least 3B in 3 AL subjects.)

### International Baccalaureate (IB)

**IB Diploma**  
(Applicants who gain admission typically attain an IB score of 32 or above out of 45.)

Non-local applicants are also required to meet the English language requirements, for example:

- A score of 80 or above in the Test of English as a Foreign Language Internet-based test (TOEFL iBT), in one sitting
- An overall band score of 6.0 in the International English Language Testing System (IELTS) Academic Module, in one sitting

### Non-JUPAS and Joint Entrance Examination (JEE):

Please visit [www.polyu.edu.hk/study/ug/admissions](http://www.polyu.edu.hk/study/ug/admissions) for more information.



## 4-year undergraduate degree curriculum framework

The overall credit requirements under the 4-year undergraduate degree structure are as follows:

### Minimum credit requirements for graduation

**120 credits**

- General University Requirements (GUR) **27 credits**
- Major **54 - 87 credits**
- Free Electives **Minimum 6 credits**

### General University Requirements

**27 credits**

	Credit
<b>CAR</b>	
Cluster-Area Requirements	9
<b>LCR</b>	
Language and Communication Requirements	9
<b>SL</b>	
Service-Learning	3
<b>LEAD</b>	
Leadership Education and Development	3
<b>AIDA</b>	
Artificial Intelligence and Data Analytics Requirement	2
<b>IE</b>	
Innovation and Entrepreneurship Requirement	1
Healthy Lifestyle	Non-Credit bearing

### Major

**54-87 credits**

Capstone Projects  
Work-Integrated Education (WIE)  
Common underpinning subject(s) for the Broad Discipline  
Discipline-Specific subjects for Major Study  
Professionals in Society  
*Include a minimum of 2 credit Discipline-Specific Language Requirements (2 credits in English)*

### Free Electives

**Minimum 6 credits**

### (Optional) Secondary Major/ Minor Study

**Remaining credits**

	Credit
Secondary Major	36
Minor Study	18

## Entry scholarships for undergraduate admissions

### (I) Academic Scholarships

#### Local Joint University Programmes Admissions System (JUPAS) Applicants

#### PolyU Academic Scholarships for Students with HKDSE Qualification

Tier	HKDSE Requirements <sup>#</sup>	Scholarship Amount <sup>##</sup>
Presidential Scholarship	Level 5** in 6 subjects or above	HK\$500,000 for whole undergraduate study (subject to meeting the required conditions for scholarship renewal) plus exchange scholarships including a subsidy to OxBridge of up to HK\$80,000 plus an Undergraduate Research and Innovation Scheme (URIS) scholarship of up to HK\$50,000
Tier 1	Level 5** in 5 subjects	Renewable full-tuition scholarship with a renewable allowance of HK\$50,000 (subject to meeting the required conditions for scholarship renewal) plus exchange scholarships including a subsidy to OxBridge of up to HK\$80,000 plus an Undergraduate Research and Innovation Scheme (URIS) scholarship of up to HK\$50,000
Tier 2	Level 5** in 4 subjects	One-off full-tuition scholarship with an allowance of HK\$15,000 plus an Undergraduate Research and Innovation Scheme (URIS) scholarship of up to HK\$50,000
Tier 3	Level 5** in 3 subjects	One-off full-tuition scholarship plus an Undergraduate Research and Innovation Scheme (URIS) scholarship of up to HK\$50,000
Tier 4	Level 5** in 2 subjects	One-off half-tuition scholarship

#### FCE Entry Scholarship for Outstanding HKDSE Students<sup>^</sup>

Tier	HKDSE Scores <sup>+</sup> (Any best 5 subjects)	Scholarship Amount <sup>##</sup>
Tier 1	30 or above	One-off scholarship of HK\$30,000
Tier 2	28 - < 30	One-off scholarship of HK\$20,000
Tier 3	26 - < 28	One-off scholarship of HK\$15,000
Tier 4	25 - < 26	One-off scholarship of HK\$10,000

<sup>#</sup> Students meeting more than one of the HKDSE requirements listed will be awarded the better tier of scholarship.

<sup>##</sup> A student can concurrently hold more than one scholarship administered by the University in an academic year if the total value of scholarships received by him/her does not exceed his/her annual tuition fee payable plus an allowance of HK\$50,000 unless otherwise stipulated.

<sup>^</sup> Awarded students who are in financial need, as proven by any approved grant provided under the Tertiary Student Finance Scheme – Publicly-funded Programmes (TSFS), may receive the “FCE Bursary for Outstanding HKDSE Students” of an additional amount of HK\$10,000 for all tier levels, upon submission of an application form together with a copy of TSFS’s Notification of Result.

<sup>+</sup> For the purpose of calculating the admission scores, HKDSE level attainments will be converted to level points where Level 5\*\*=8.5, 5\*=7, 5=5.5, 4=4, 3=3, 2=2, 1=1 and Unclassified = 0.

#### Local Non-JUPAS / International Applicants

Tier	IB Score Requirements	Scholarship Amount	GCEAL / IAL Requirements (Excluding Chinese Subject)	Scholarship Amount <sup>##</sup>
Presidential Scholarship	45	Renewable full-tuition scholarship with a renewable allowance of HK\$65,000 (subject to meeting the required conditions for scholarship renewal) plus an Undergraduate Research and Innovation Scheme (URIS) scholarship of up to HK\$50,000	5A*	Renewable full-tuition scholarship with a renewable allowance of HK\$50,000 (subject to meeting the required conditions for scholarship renewal) plus an Undergraduate Research and Innovation Scheme (URIS) scholarship of up to HK\$50,000
Tier 1	43 - 44	Renewable full-tuition scholarship with a renewable allowance of HK\$50,000 (subject to meeting the required conditions for scholarship renewal) plus an Undergraduate Research and Innovation Scheme (URIS) scholarship of up to HK\$50,000	4A*	Renewable full-tuition scholarship with a renewable allowance of HK\$15,000 (subject to meeting the required conditions for scholarship renewal) plus an Undergraduate Research and Innovation Scheme (URIS) scholarship of up to HK\$50,000
Tier 2	41 - 42	Renewable full-tuition scholarship with a renewable allowance of HK\$15,000 (subject to meeting the required conditions for scholarship renewal) plus an Undergraduate Research and Innovation Scheme (URIS) scholarship of up to HK\$50,000	3A*	Renewable full-tuition scholarship
Tier 3	39 - 40	Renewable full-tuition scholarship	—	—

## International Applicants

The entry scholarships usually cover the normal duration of your scheme/programme and are subject to meeting the required conditions for scholarship renewal.

To further strengthen and enhance our diverse undergraduate student body, the Cultural Ambassador Scholarship is set up for selected non-local students. The scholarship of up to HK\$40,000 per year is awarded to selected students. Recipients are required to work together with the Global Engagement Office, reaching out further to international prospective students and parents to promote our undergraduate programmes and schemes.

The Faculty also offers tuition waiver scholarships to eligible international applicants via FCE International Student Scholarship Scheme. The scholarships are renewable every year subject to students' academic performance at PolyU.

## 内地应届高考生 Joint Entrance Examination (JEE)

申请人如在应届高考成绩优异，或在个别课程的申请人中成绩优秀，并符合本校的要求，可获得理大、个别学系、政府或捐赠人士所提供的入学奖学金，金额最高为相等于攻读本科课程正常修业期内的学费，每年65,000港元的生活津贴以及高达50,000港元的「本科生科研计划」奖学金。

## (II) Non-academic Scholarships

PolyU embraces students with special talents in Sports, Arts and Culture, Leadership and Community Services, and STEM through Special Talents Admission and Recognition Scheme (STARS). The scheme serves as an alternative admission route for students whose exceptional achievements cannot be fully reflected in their academic studies.

Scholarship Description	Scholarship Amount@
The STARS Scholarships recognise talents in four specific areas: <ul style="list-style-type: none"><li>Sports</li><li>Arts and Culture</li><li>Leadership and Community Services, and</li><li>STEM</li></ul>	Renewable scholarship of HK\$100,000
	Renewable scholarship of HK\$60,000
	Renewable scholarship of HK\$30,000
	Renewable scholarship of HK\$10,000

@ Subject to meeting the required conditions for scholarship renewal.

Application is not required. The awarded students will be informed separately. Please visit [www.polyu.edu.hk/ar/ug-scholarships](http://www.polyu.edu.hk/ar/ug-scholarships) and <https://www.polyu.edu.hk/fce/scholarships-and-awards/> for up-to-date information.

## Non-Local Learning Activities

PolyU is dedicated to developing students with global competence and international perspectives. It encourages undergraduates to engage in exchange activities, summer programs, conferences, competitions, and study tours. The university supports these international learning experiences by offering financial assistance to help students broaden their horizons and become global citizens.

Please visit the Global Engagement Office website ([www.polyu.edu.hk/geo](http://www.polyu.edu.hk/geo)) for details.

### FCE Global Learning Scheme

The Faculty established the Global Learning Scheme to encourage and support students currently enrolled in its Bachelor's level programmes to participate in non-local learning activities. On top of the University's financial assistance, eligible students can receive a one-off financial subsidy from the Faculty to cover the related expenses of participating in non-local learning activities.



Category	Subsidy for airfare	Subsistence allowance	Range of <u>Total</u> Subsidy
<ul style="list-style-type: none"><li>Non-local WIE</li><li>Outbound exchange programme</li><li>Outgoing 2+2 programme</li></ul>	<ul style="list-style-type: none"><li>Asia: HK\$1,000</li><li>Non-Asia: HK\$3,000</li></ul>	<ul style="list-style-type: none"><li>Four weeks or summer term: HK\$4,000</li><li>One semester: HK\$10,000</li><li>One academic year: HK\$20,000</li><li>Two academic years (applicable to 2+2 programme only): HK\$40,000</li></ul>	HK\$5,000 - HK\$43,000
<ul style="list-style-type: none"><li>Non-local CAR subject</li><li>Non-local SL subject</li><li>Non-local learning experience with a minimum duration of 7 days, e.g., study tour, international conference, etc.</li></ul>	<ul style="list-style-type: none"><li>Asia: HK\$1,000</li><li>Non-Asia: HK\$3,000</li></ul>	N/A	HK\$1,000 - HK\$3,000

Source of information: Study@PolyU and the website of the Global Engagement Office (PolyU)

PolyU reserves the right to change the terms or withdraw the scholarships. In case of any dispute/disagreement, the University's decision is final.

This leaflet contains information known as of February 2025. Contents of this leaflet are subject to review and change without prior notice.



# Bachelor's Degree Scheme in Construction and Environment

## 建設及環境組合學士課程

### Aims and Characteristics

At PolyU, innovation and technology drive an academic environment fostering national pride, social responsibility, and a global mindset. Our Bachelor's Degree Scheme provides one entry in application for a choice of nine Majors, offering students the time and flexibility to explore various fields related to construction and environment, helping them make informed decisions about their preferred programme towards the end of their first year of studies and prepare for professional careers in the construction industry and environmental field. For the specific aims of each individual scheme/programme, please refer to the respective leaflets.

Upon successful completion of the programme, students will gain one of the following awards:

Bachelor's Degree Scheme in Construction and Environment 建設及環境組合學士課程	BEng (Hons) in Building Sciences and Engineering <sup>1</sup> 建築科學及工程學(榮譽)工學士
	BSc (Hons) in Architectural Studies 建築學(榮譽)理學士
	BSc (Hons) in Building Engineering and Management <sup>2</sup> 建築工程及管理學(榮譽)理學士
	BSc (Hons) in Surveying 地產及建設測量學(榮譽)理學士
	BEng (Hons) in Civil Engineering 土木工程學(榮譽)工學士
	BEng (Hons) in Civil Engineering (Smart Mobility) with a Secondary Major in AIDA <sup>3</sup> 土木工程學(智能運輸)(榮譽)工學士 副主修人工智能及數據分析
	BEng (Hons) in Environmental Engineering and Sustainable Development 環境工程及可持續發展學(榮譽)工學士
	BSc (Hons) in Land Surveying and Geo-Informatics <sup>2</sup> 土地測量及地理資訊學(榮譽)理學士
	BSc (Hons) in Urban Informatics and Smart Cities 城市信息學及智慧城市(榮譽)理學士

<sup>1</sup> The options of a Secondary Major in Artificial Intelligence and Data Analytics (AIDA) or Innovation and Entrepreneurship (IE) are available.

<sup>2</sup> The option of a Secondary Major in Artificial Intelligence and Data Analytics (AIDA) is available.

<sup>3</sup> The programme is only offered in conjunction with the Secondary Major in Artificial Intelligence and Data Analytics (AIDA).

CODE  
JS3004

STUDY MODE  
Full-time

DURATION  
4 years

CREDIT REQUIRED

Please refer to the respective leaflets.

## Professional Recognition and Career Prospects

Undergraduate schemes/programmes at the Faculty of Construction and Environment prepare students for professional careers and leadership positions in a range of disciplines.

Most of our undergraduate schemes/programmes are accredited/recognised by professional organisations, for example, The Hong Kong Institution of Engineers (HKIE), The Hong Kong Institute of Surveyors (HKIS), Royal Institution of Chartered Surveyors (RICS), Chartered Institution of Building Services Engineers (CIBSE) of the United Kingdom, Institution of Occupational Safety and Health (IOSH) of the United Kingdom, and Chartered Institution of Civil Engineering Surveyors (CICES), etc. For details on the professional accreditation/recognition, please refer to the respective leaflets of each scheme/programme.

## Secondary Major Details

Some of the undergraduate schemes/programmes at the Faculty of Construction and Environment offer the opportunity to pursue a secondary major, allowing our students to further broaden their academic and career horizons. Please refer to the respective leaflets of each scheme/programme and visit <https://www.polyu.edu.hk/study/ug> for more information.

### Enquiries:

Faculty of Construction and Environment


✉ [faculty.ce@polyu.edu.hk](mailto:faculty.ce@polyu.edu.hk)

☎ (852) 3400-8496

🌐 [www.polyu.edu.hk/fce](http://www.polyu.edu.hk/fce)

### FOLLOW US

 Faculty of Construction and Environment

 [polyufce](https://www.instagram.com/polyufce)



# BEng (Hons) in Building Sciences and Engineering

建築科學及工程學(榮譽)工學士

## Aims

We equip graduates with the technical and academic competence needed to excel in building sciences and engineering/building services engineering. This programme meets the demand for locally trained building/building services engineers with expertise in the fields of consultancy, contracting, building management, and research and development.

Our graduates have a broad range of personal skills, such as the ability to communicate effectively, think critically, learn independently and solve new problems innovatively.

## Characteristics

Students learn the art and science of providing safe, healthy, and energy-efficient built environments with minimal adverse ecological impacts. They also have opportunities to tackle intellectual challenges that prepare them to become managers in the industry.

Students have the opportunity to work in teams, lead small projects, work independently, and interact with highly qualified and professional staff. They also have access to a variety of design software and laboratory facilities for the latest building sciences and engineering applications, such as artificial intelligence and big data for smart buildings.

Local and overseas summer placement opportunities are offered. Students who join the Student Exchange Programme can study for a semester at universities in the United States, Europe, Australia, Russia, Southeast Asia or Mainland China. Students are regularly awarded scholarships by professional bodies and major organisations in Hong Kong.

All admitted students will embark on a Common Year One curriculum. After the first year of studies, students can decide whether to continue with their initial choice or switch to another choice within the Faculty. Those who wish to switch can choose their preferred departmental scheme/programme through a ranking assessment.

## Professional Recognition

The Hong Kong Institution of Engineers (HKIE) has granted full accreditation to the BEng (Hons) in Building Sciences and Engineering.

Graduates of this programme may then qualify for Scheme A training with the HKIE in the following disciplines: (i) Building Services, (ii) Fire, (iii) Environmental\* and (iv) Energy. Academic programmes in the Building Services discipline that are accredited by the HKIE are reciprocally recognised by the UK's Chartered Institution of Building Services Engineers (CIBSE).

\* Upon completion of specific elective subjects.

CODE  
JS3211

STUDY MODE  
Full-time

DURATION  
4 years

CREDIT REQUIRED  
122 (plus 12 training credits)

**BEEF**

Department of  
Building Environment and  
Energy Engineering



## Career Prospects

Graduates have good career prospects in the building construction and real estate sectors. The rapid construction of new and state-of-the-art buildings in Hong Kong provides numerous attractive local employment opportunities. As the programme is widely recognised, these opportunities also extend to Mainland China and overseas.

Graduates often begin their careers as trainee engineers in government departments, consulting firms, contracting companies, property management companies or utility companies. First Class Honours graduates may consider research an attractive option, especially because building development in Hong Kong embraces advanced technology worthy of in-depth investigation.

## Secondary Major Details

The option of a Secondary Major is available to students of this programme:

- Secondary Major in Artificial Intelligence and Data Analytics (AIDA); or
- Secondary Major in Innovation and Entrepreneurship (IE)

### Enquiries:

Department of Building Environment  
and Energy Engineering

✉ [beee.enquiry@polyu.edu.hk](mailto:beee.enquiry@polyu.edu.hk)

☎ (852) 2766-5847

🌐 [www.polyu.edu.hk/beee](http://www.polyu.edu.hk/beee)

FOLLOW US

 PolyU.BEEE

 PolyU\_BEEE



## BSc (Hons) in Architectural Studies

### 建築學(榮譽)理學士

#### Aims

The programme aims to train up architecture graduates who are able to adopt advanced technology and innovations in practice to support the growth of the construction industry. The proposed programme objectives are to provide quality education to familiarise architectural students with the latest advanced technology such as Artificial Intelligence (AI), Building Information Modelling (BIM), and Geographic Information Systems (GIS) relating to architecture, construction, building materials, and building services to respond to the issues of sustainable development in the built environment. The uniqueness of this programme is the integration of knowledge and analytical tools, digital skills, and transferable skills with design capabilities for the needs of the architecture profession.

#### Characteristics

The programme is to be co-hosted by the Department of Building and Real Estate and the School of Design of the University.

The programme curriculum includes advanced technologies such as Artificial Intelligence (AI) in architecture, data analytics, 3D printing, Cave Automatic Virtual Environment (CAVE), Augmented Reality/Virtual Reality (AR/VR), Building Information Modelling (BIM) etc. These technologies will be embedded in relevant technical subjects of the programme and the Architecture and Spatial Design Studios.

Practical training/Internship (Work-Integrated Education) is a compulsory element of the curriculum. Students usually undertake internships during the summer period.

The Department maintains a mentorship scheme in which students are matched with senior figures in the construction and real estate industry to gain insights into professional practice.

The Department also operates a student exchange programme to provide students with opportunities to study abroad for one academic semester at universities in the United Kingdom, the United States, Australia, Canada, Singapore, Taiwan and the Mainland, etc.

All admitted students will embark on a Common Year One curriculum. After the first year of studies, students can decide whether to continue with their initial choice or switch to another choice within the Faculty. Those who wish to switch can choose their preferred departmental scheme/programme through a ranking assessment.

**CODE**  
JS3214

**STUDY MODE**  
Full-time

**DURATION**  
4 years

**CREDIT REQUIRED**  
122 (plus 2 training credits)

## Professional Recognition

This programme will seek accreditation with the following institutions/organisations:

- The Hong Kong Institute of Architects (HKIA)
- Architects Registration Board (ARB) Part I (pre-professional)

## Career Prospects

Graduates readily find employment as professional trainees in architecture firms, construction companies, and government departments such as the Architectural Services Department, the Buildings Department, the Housing Department as well as other quasi-public organisations and private sector companies involved in urban planning and architectural development. The programme's emphasis on advanced construction technology and management skills prepares graduates for leadership roles and specialised positions within the Greater Bay Area and beyond. Graduates are welcome to further study master's degree programmes.

### Enquiries:

Department of Building and Real Estate

✉ [irene.wu@polyu.edu.hk](mailto:irene.wu@polyu.edu.hk)

☎ (852) 3400-8121

🌐 [www.polyu.edu.hk/bre](http://www.polyu.edu.hk/bre)

FOLLOW US

📘 [hkpolyubre](#)

📷 [hkpolyubre](#)



# BSc (Hons) in Building Engineering and Management

建築工程及管理學(榮譽)理學士

## Aims

This programme provides an excellent opportunity for students who would like to pursue an education in the building engineering and construction management profession. The advancing building construction industry in Hong Kong and neighbouring regions requires graduates who possess highly specialised skills in technology, management and communication. Students also face intellectual challenges that promote self-development and enhance problem-solving skills. Our well-trained graduates are in great demand as professional building engineers and construction managers because they can easily adapt to the changing needs of the construction industry and have developed the expertise that is necessary to plan, coordinate, supervise and control the complex process of building projects.

## Characteristics

Students are required to take 121 credits and 2 training credits in this four-year programme. The subjects include Building Engineering and Technology, Management, Construction Economics, Project Works, Capstone Project and Languages. Site visits and guest lectures are arranged throughout the course of study. Practical training/Internship (Work-Integrated Education) is a compulsory element of the curriculum. Students usually undertake internships during the summer period.

The Department maintains a mentorship scheme in which students are matched with senior figures in the construction and real estate industry to gain insights into professional practice.

The Department also operates a student exchange programme to provide students with opportunities to study abroad for one academic semester at universities in the United Kingdom, the United States, Australia, Canada, Singapore, Taiwan and the Mainland, etc.

All admitted students will embark on a Common Year One curriculum. After the first year of studies, students can decide whether to continue with their initial choice or switch to another choice within the Faculty. Those who wish to switch can choose their preferred departmental scheme/programme through a ranking assessment.

## Professional Recognition

The BSc (Hons) in Building Engineering and Management is accredited by The Hong Kong Institution of Engineers (HKIE) and the Chartered Institute of Building in the UK (CIOB).

**CODE**  
JS3791

**STUDY MODE**  
Full-time

**DURATION**  
4 years

**CREDIT REQUIRED**  
121 (plus 2 training credits)

## Career Prospects

Following appropriate training in the industry, graduates will become building engineers and/or construction managers. The continuing growth of Hong Kong's building and infrastructure development offers ample opportunities for challenging and rewarding careers. Our graduates usually take up positions with construction companies or real estate development companies.

## Secondary Major Details

The option of a Secondary Major is available to students of this programme:

- Secondary Major in Artificial Intelligence and Data Analytics (AIDA)

### Enquiries:

Department of Building and Real Estate

✉ [irene.wu@polyu.edu.hk](mailto:irene.wu@polyu.edu.hk)

☎ (852) 3400-8121

🌐 [www.polyu.edu.hk/bre](http://www.polyu.edu.hk/bre)

FOLLOW US

📘 [hkpolyubre](#)

📷 [hkpolyubre](#)



## BSc (Hons) in Surveying

### 地產及建設測量學(榮譽)理學士

#### Aims

This programme aims to develop all-round and flexible graduates with fundamental knowledge and practical skills in the interdisciplinary professions of land management, real estate development and construction project management. The Programme underpins surveying studies with the disciplines of economics and finance, law, management and technology and cultivates a global mindset with international studies in the real estate and construction markets in China and overseas.

#### Characteristics

This is a professional degree programme with a global and practical perspective. Students will learn about economics, law, finance and investment, management and technology in the construction and real estate context. Problem identification, problem solving and decision making form the focus of the programme. There is close contact with the industry through guest lectures, companies and site visits. Students will undertake group and individual practical projects throughout their studies.

Practical training/Internship (Work-Integrated Education) is a compulsory element of the curriculum. Students usually undertake internships during the summer period.

The Department maintains a mentorship scheme in which students are matched with senior figures in the construction and real estate industry to gain insights into professional practice.

The Department also operates a student exchange programme to provide students with opportunities to study abroad for one academic semester at universities in the United Kingdom, the United States, Australia, Canada, Singapore, Taiwan and the Mainland, etc.

All admitted students will embark on a Common Year One curriculum. After the first year of studies, students can decide whether to continue with their initial choice or switch to another choice within the Faculty. Those who wish to switch can choose their preferred departmental scheme/programme through a ranking assessment.

#### Professional Recognition

The BSc (Hons) in Surveying is accredited by The Hong Kong Institute of Surveyors (HKIS) and the Royal Institution of Chartered Surveyors in the UK (RICS).

**CODE**  
JS3789

**STUDY MODE**  
Full-time

**DURATION**  
4 years

**CREDIT REQUIRED**  
121 (plus 2 training credits)

## Career Prospects

Graduates readily find employment as professional trainees in various international surveying consultancies, property development companies, construction companies, government departments such as the Rating and Valuation Department, the Lands Department, the Housing Department, the Architectural Services Department and the Buildings Department, and other large quasi-public organisations, such as the MTR, the Urban Renewal Authority, and the Hong Kong Housing Society, etc.

In recent years, some graduates have also been recruited into business and financial institutions in the fields of asset and facility management. The majority of the graduating class has been offered employment before or shortly after the final examination.

### Enquiries:

Department of Building and Real Estate

✉ [irene.wu@polyu.edu.hk](mailto:irene.wu@polyu.edu.hk)

☎ (852) 3400-8121

🌐 [www.polyu.edu.hk/bre](http://www.polyu.edu.hk/bre)

FOLLOW US

📘 [hkpolyubre](#)

📷 [hkpolyubre](#)



## BEng (Hons) in Civil Engineering

### 土木工程學(榮譽)工學士

#### Aims and Characteristics

This programme aims to nurture well-rounded civil engineering graduates who are conversant in environmental, geotechnical, hydraulic, structural and transportation engineering, in addition to construction management. Graduates will be able to plan, design, construct, and manage interdisciplinary civil engineering projects incorporating complex commercial, environmental, social, and legal considerations.

All admitted students will embark on a Common Year One curriculum. After the first year of studies, students can decide whether to continue with their initial choice or switch to another choice within the Faculty. Those who wish to switch can choose their preferred departmental scheme/programme through a ranking assessment.

#### Professional Recognition

Full accreditation has been granted to this programme by The Hong Kong Institution of Engineers (HKIE). As such, graduates of the programme are qualified for Corporate Membership of the HKIE after appropriate training and are eligible to join Scheme A training of the HKIE in the following disciplines:

- Civil Discipline
- Environmental Discipline
- Geotechnical Discipline
- Structural Discipline
- Logistics & Transportation Discipline  
(upon completion of specific elective subjects)

#### Career Prospects

The majority of our graduates embark upon rewarding careers in government departments and authorities, engineering consultants and construction contractors soon after graduation. After a few years of relevant work experience, many graduates further advance their careers by sitting an examination to become professional engineers. Other graduates pursue higher degrees at prestigious overseas institutions.

CODE  
JS3739

STUDY MODE  
Full-time

DURATION  
4 years

CREDIT REQUIRED  
126 (plus 13 training credits)

## Secondary Major Details

A specialised programme titled BEng (Hons) in Civil Engineering (Smart Mobility) with a Secondary Major in AIDA 土木工程學(智能運輸)(榮譽)工學士副主修人工智能及數據分析 is exclusively available to students who choose the Secondary Major in Artificial Intelligence and Data Analytics (AIDA).

Full accreditation will be sought for the programme from The Hong Kong Institution of Engineers (HKIE).

Graduates with a secondary major have a competitive edge when seeking positions with transport consultancies, public transport operators, Mobility-as-a-Service companies, and other positions in the field of smart mobility development and applications.

### Enquiries:

Department of Civil and Environmental Engineering

✉ [cindy.cc.ng@polyu.edu.hk](mailto:cindy.cc.ng@polyu.edu.hk)

☎ (852) 2766-6017

🌐 [www.polyu.edu.hk/cee](http://www.polyu.edu.hk/cee)

FOLLOW US

 [cee.hkpolyu](https://www.facebook.com/cee.hkpolyu)

 [cee.hkpolyu](https://www.instagram.com/cee.hkpolyu)

# BEng (Hons) in Environmental Engineering and Sustainable Development

環境工程及可持續發展學(榮譽)工學士

## Aims and Characteristics

This is a unique programme that integrates elements of environmental engineering, environmental science, sustainable development, and carbon neutrality technologies and management. Graduates are able to devise practical solutions to environmental problems in water and waste management, circular economies, energy sustainability, and urban development, and contribute to the formulation of policies that will lead to sustainable development.

All admitted students will embark on a Common Year One curriculum. After the first year of studies, students can decide whether to continue with their initial choice or switch to another choice within the Faculty. Those who wish to switch can choose their preferred departmental scheme/programme through a ranking assessment.

## Professional Recognition

Full accreditation has been granted to this programme by The Hong Kong Institution of Engineers (HKIE). As such, graduates of this programme are qualified for Corporate Membership of the HKIE after appropriate training and are eligible to join Scheme A training of the HKIE in the following disciplines:

- Environmental Discipline
- Logistics & Transportation Discipline  
(upon completion of specific elective subjects)

Upon the completion of three specific safety subjects, students will fulfil the academic requirements of a Safety Supervisor.

## Career Prospects

The majority of our graduates embark upon rewarding careers in government departments and authorities, engineering consultants and construction contractors soon after graduation. After a few years of relevant work experience, many graduates further advance their careers by sitting an examination to become professional engineers. Other graduates pursue higher degrees at prestigious overseas institutions.

CODE  
JS3375

STUDY MODE  
Full-time

DURATION  
4 years

CREDIT REQUIRED  
125 (plus 13 training credits)

### Enquiries:

Department of Civil and  
Environmental Engineering

✉ [kit-ying-katie.yau@polyu.edu.hk](mailto:kit-ying-katie.yau@polyu.edu.hk)

☎ (852) 2766-4641

🌐 [www.polyu.edu.hk/cee](http://www.polyu.edu.hk/cee)

FOLLOW US

 [cee.hkpolyu](https://www.facebook.com/cee.hkpolyu)

 [cee.hkpolyu](https://www.instagram.com/cee.hkpolyu)



# BSc (Hons) in Environmental and Occupational Safety and Health

環境及職業安全與健康(榮譽)理學士

## Aims

This programme is designed to respond to the increasing demand for local environmental and occupational safety and health legislation on the work environments of organisations and to the demand for graduates who have the skills necessary to work in these focused professional areas. This application-oriented programme aims to provide additional full-time training opportunities to allow Higher Diploma/Associate Degree graduates to gain a full degree qualification and to equip graduates with skills that they can further develop in careers as professionals in the areas of environmental and occupational safety and health.

## Characteristics

This programme is the only undergraduate degree programme in safety and health for the construction industry offered by a local university. The programme content can be broadly divided into two areas: environmental protection and occupational safety and health. These interrelated areas are given equal weighting so that graduates are equipped with sufficient knowledge to tackle both environmental and occupational health and safety problems and to develop and implement appropriate systems or preventive measures. The programme is hosted by the Department of Civil and Environmental Engineering, with the support of the Industrial Centre and other units in the University. PolyU has extensive experience in teaching and research in the areas of environmental and occupational health and safety.

## Professional Recognition

On completion of the programme, graduates can fulfil the academic requirements for registration as a Registered Safety Officer (RSO) with the Labour Department, HKSAR and as an Environmental Officer (EO) for government contracts. In addition, they can apply for membership of The Institution of Occupational Safety and Health of the United Kingdom (IOSH).

## Career Prospects

Graduates can have a wide spectrum of career opportunities in public utility, construction companies, consultants, non-governmental organisations (NGOs) and other private agents.

CODE  
31470

STUDY MODE  
Full-time

DURATION  
2 years

CREDIT REQUIRED  
65 (plus 4 training credits)

## Enquiries:

Department of Civil and Environmental Engineering

✉ [sofi.mok@polyu.edu.hk](mailto:sofi.mok@polyu.edu.hk)

☎ (852) 2766-4789

🌐 [www.polyu.edu.hk/cee](http://www.polyu.edu.hk/cee)

FOLLOW US

 [cee.hkpolyu](https://www.facebook.com/cee.hkpolyu)

 [cee.hkpolyu](https://www.instagram.com/cee.hkpolyu)



## BSc (Hons) Scheme in Spatial Data Science and Smart Cities

### (Land Surveying and Geo-Informatics / Urban Informatics and Smart Cities)

### 空間數據科學及智慧城市(榮譽)理學士組合課程 (土地測量及地理資訊學/城市信息學及智慧城市)

BSc (Hons) Scheme in  
Spatial Data Science and Smart Cities  
空間數據科學及智慧城市(榮譽)  
理學士組合課程

BSc (Hons) in Land Surveying and Geo-Informatics  
土地測量及地理資訊學(榮譽)理學士

*The option of a Secondary Major in Artificial Intelligence and Data Analytics (AIDA) is available.*

BSc (Hons) in Urban Informatics and Smart Cities  
城市信息學及智慧城市(榮譽)理學士

## Aims

The aims of the LSGI Scheme are underpinned by the philosophy that our graduates should be capable of coping with the rapidly changing market conditions in Hong Kong, Mainland China, and the region, and with the demands of their future professions in land surveying, geo-information technology, utility management and surveying, as well as urban informatics and smart cities.

## BSc (Hons) in Land Surveying and Geo-Informatics

### 土地測量及地理資訊學(榮譽)理學士

## Characteristics

This programme equips students with land surveying/geomatics, geo-information technology, and utility surveying/management skills, enabling graduates to work competently and confidently as geographic information systems professionals in disciplines such as transport and logistics, and environmental, socio-economic, commercial and construction surveying, or as utility professionals in a discipline related to the survey, condition diagnosis, maintenance and management of underground facilities.

All admitted students will embark on a Common Year One curriculum. After the first year of studies, students can decide whether to continue with their initial choice or switch to another choice within the Faculty. Those who wish to switch can choose their preferred departmental scheme/programme through a ranking assessment.

## Professional Recognition

The programme is accredited by The Hong Kong Institute of Surveyors (HKIS), The Royal Institution of Chartered Surveyors (RICS), The Land Surveyors Board Malaysia (LSB), The Chartered Institution of Civil Engineering Surveyors (CICES) and The Hong Kong Institution of Engineering Surveyors (HKIES).

## Career Prospects

Graduates of the BSc (Hons) in Land Surveying and Geo-Informatics programme can become professional land surveyors, geo-information technology specialists, or utility specialists.

## Secondary Major Details

The option of a Secondary Major is available to students of this programme:

- Secondary Major in Artificial Intelligence and Data Analytics (AIDA)

CODE  
JS3130

STUDY MODE  
Full-time

DURATION  
4 years

## CREDIT REQUIRED

### BSc (Hons) in Land Surveying and Geo-Informatics

124 (plus 1 training credit and a non-credit bearing summer training)

# **BSc (Hons) in Urban Informatics and Smart Cities** **城市信息學及智慧城市(榮譽)理學士**

## **Characteristics**

This programme equips students to address various challenges in global cities related to the rapid urbanisation process. The main purpose of the programme is to educate students on the principles and theories in urban science and to equip them with practical skills in urban analytics so that they can leverage emerging technologies and values in urban big data to better understand and serve smart cities.

All admitted students will embark on a Common Year One curriculum. After the first year of studies, students can decide whether to continue with their initial choice or switch to another choice within the Faculty. Those who wish to switch can choose their preferred departmental scheme/programme through a ranking assessment.

## **Professional Recognition**

The programme is accredited by The Hong Kong Institute of Surveyors (HKIS).

## **Career Prospects**

Graduates of the BSc (Hons) in Urban Informatics and Smart Cities programme will have various employment opportunities in both the public sectors and private companies from a broad range of areas about smart city management, including construction, telecommunication, information technology, urban planning, transportation and logistics, public health, environmental management, social welfare, finance, and real estate.

## **CREDIT REQUIRED**

### **BSc (Hons) in Urban Informatics and Smart Cities**

**119 (plus 1 training credit and a non-credit bearing summer training)**



## **Enquiries:**

Department of Land Surveying and  
Geo-Informatics

✉ [lsgi.ug@polyu.edu.hk](mailto:lsgi.ug@polyu.edu.hk)

☎ (852) 2766-5968


🌐 [www.polyu.edu.hk/lsgi](http://www.polyu.edu.hk/lsgi)

**FOLLOW US**


 **LSGI.PolyU**

 **lsgi.polyu**

## Faculty of Construction and Environment

 ZS1201, 12/F, South Tower, Block Z  
The Hong Kong Polytechnic University  
Hung Hom, Kowloon, Hong Kong

 [faculty.ce@polyu.edu.hk](mailto:faculty.ce@polyu.edu.hk)

 (852) 3400-8496

 [www.polyu.edu.hk/fce](http://www.polyu.edu.hk/fce)

### FOLLOW US

 Faculty of Construction and Environment

 [polyufce](https://www.instagram.com/polyufce)



FCE  
Website