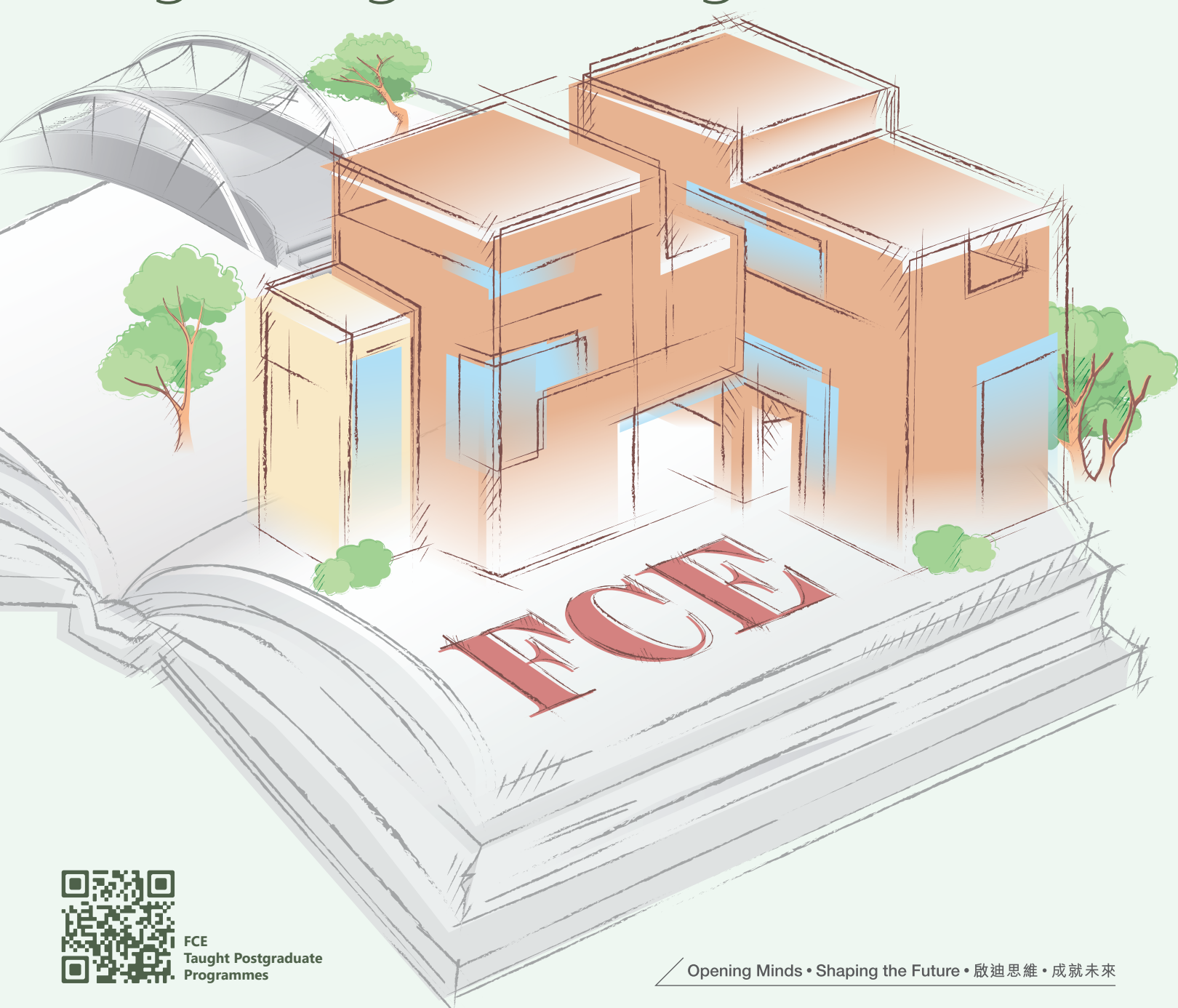


Faculty of Construction and Environment

Taught Postgraduate Programmes



FCE
Taught Postgraduate
Programmes

Opening Minds • Shaping the Future • 啟迪思維 • 成就未來

Faculty of Construction & Environment 建設及環境學院

The Faculty of Construction and Environment (FCE) has the largest concentration of expertise in Hong Kong in construction and environment-related disciplines. Organised into five departments[#] with distinct themes, FCE offers a wide range of academic programmes leading to both undergraduate and postgraduate degrees.

Rankings

Distinguished by a culture of excellence, our academics actively engage in the pursuit of knowledge and innovation. PolyU ranks among the world's top 100 institutions and the disciplines offered by FCE are highly regarded in global rankings of academic subjects.

WORLD RANKINGS

[^] **2nd**
Civil
Engineering

* **17th**
Architecture &
Built Environment

* **17th**
Civil & Structural
Engineering

* **27th**
Environmental
Sciences

RANKINGS IN HONG KONG

[^] **1st**
Civil
Engineering

* **2nd**
Architecture &
Built Environment

* **2nd**
Civil & Structural
Engineering

* **1st**
Environmental
Sciences

[#]The Department of Architecture has been approved to be established on 1 July 2026.

[^]US News and World Report – Best Global Universities Rankings 2025-26

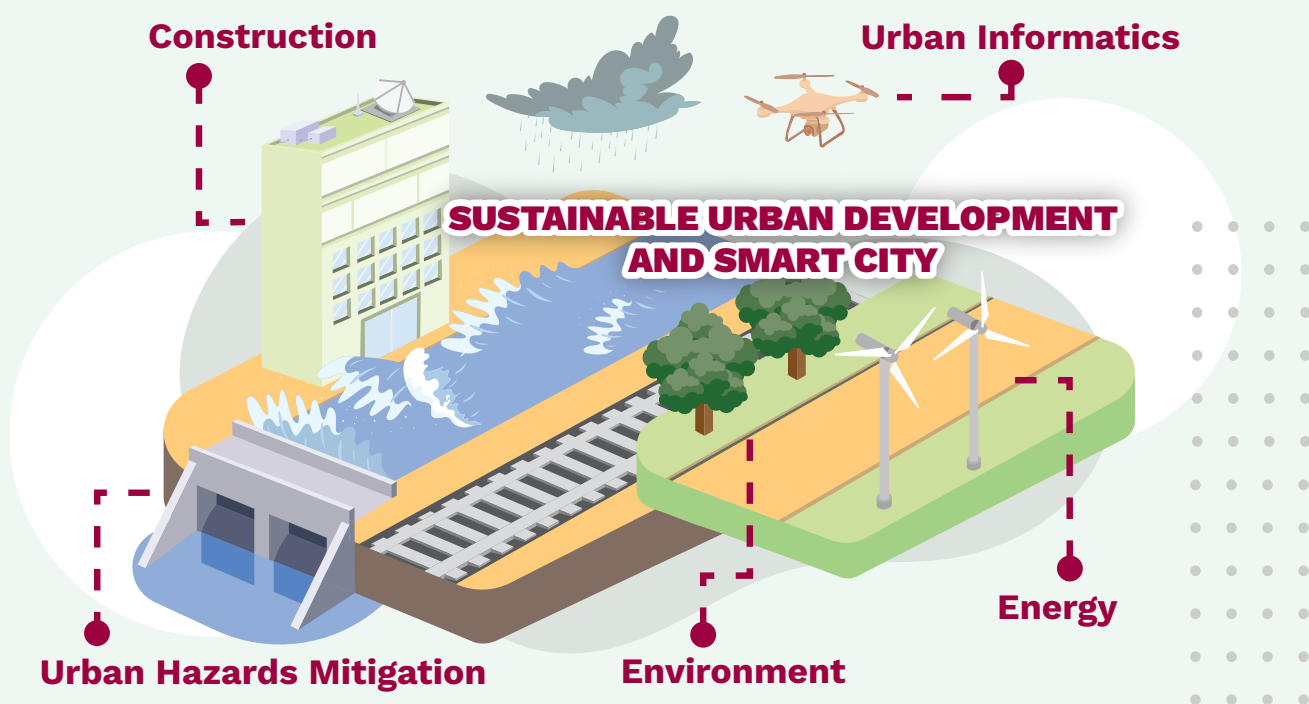
*QS World University Rankings by Subject 2025

Professional Accreditations

Most of FCE's programmes are accredited/recognised by professional organisations, for example:

- Chartered Institution of Building Services Engineers, the United Kingdom (CIBSE)
- Chartered Institution of Civil Engineering Surveyors, the United Kingdom (CICES)
- The Hong Kong Institution of Engineers (HKIE)
- The Hong Kong Institute of Surveyors (HKIS)
- Institution of Occupational Safety and Health, the United Kingdom (IOSH)
- Royal Institution of Chartered Surveyors, the United Kingdom (RICS)

For details on the professional accreditation/recognition, please refer to the respective leaflets of each scheme/programme.



Career Prospects


FCE's programmes prepare students for professional careers and leadership positions in a range of disciplines. Virtually all aspects of construction from land, building, quantity and general practice surveying to environmental engineering, architectural design, building and civil engineering design, to actual construction and its management, to repair, refurbishment as well as the operation and management of built facilities are covered by the Faculty's programmes and its research activities. We work closely with industry to ensure our programmes are relevant and meet the changing needs of society. Thousands of our graduates have established themselves in various sectors of the construction industry and environmental field in Hong Kong and beyond.

FOLLOW US

 Faculty of Construction and Environment

 polyufce

 www.polyu.edu.hk/fce

 (852) 3400-8496

 faculty.ce@polyu.edu.hk



FCE Undergraduate
Programmes



FCE Taught Postgraduate
Programmes

List of Taught Postgraduate Programmes Offered (2026/27 Admission)

Department	Programme Title	Programme Code
BEEE Department of Building Environment and Energy Engineering	Master of Engineering in Building Services Engineering	33082
	Master of Science in Building Services Engineering	33084
	Master of Science in Carbon Neutral Cities and Urban Sustainability	33088
	Master of Science in Facility Management	33085
	Master of Science in Fire and Safety Engineering	33086
	Master of Science in High Performance Buildings	33087
BRE Department of Building and Real Estate	Doctor of International Real Estate and Construction	32109
	Master of Science in Construction and Real Estate	32111
	Master of Science in Intelligent Construction	32114
	Master of Science in Project Management	32113
CEE Department of Civil and Environmental Engineering	Master of Science in Civil Engineering	31077
	Master of Science in Environmental Management and Engineering	31078
LSGI Department of Land Surveying and Geo-Informatics	Master of Science in Geomatics	34084
	Master of Science in Urban Informatics and Smart Cities	34083



Admission Requirements

General Entrance Requirements

For admission to a Doctoral degree programme, you must possess a Master's degree. As for a Master's degree or Postgraduate Diploma, the basic requirement is a Bachelor's degree from an institution that is recognised by PolyU. In addition, you must meet the entrance requirements that are specified by individual programmes. PolyU may accept equivalent qualifications. The decision will be made on an individual basis.

English Language Requirement

If you are not a native speaker of English, and your Bachelor's degree or equivalent qualification is awarded by institutions where the medium of instruction is not English, you are expected to provide one of the following proficiency test results (taken in a single sitting within 2 years) to fulfil the minimum English language requirement for admission purposes:

- A score of 80 or above in the Test of English as a Foreign Language (TOEFL) Internet-based test
OR
- An Overall Band score of 6.0 or above in the International English Language Testing System (IELTS) Academic module

Remarks: TOEFL iBT Home Edition, the IELTS Online, IELTS indicator test, and IELTS one skill retake results will not be considered for meeting the English language Requirements for taught programmes.

Application

Applications are received online via eAdmission system. Please note that our University does not authorise any person, organisation, or agency for student recruitment purposes. Interested individuals should submit your application to us via eAdmission directly.

The application fee for admission to taught postgraduate programmes for 2026/27 is HK\$500. The fee is non-refundable and non-transferrable. You must settle the application fee upon submission of your online application, otherwise, your application will not be further processed.

Departments will consider applications on a rolling basis until places are filled. Some programmes will receive applications in two rounds (i.e., early round and main round admissions). To secure a study place, applicants should apply as early as possible.

Credits Required for Graduation

Doctor of International Real Estate and Construction	52
Master of Engineering/Science	31

- The University and specified programme/subject requirements must be fulfilled.
- Master of Science students can apply to graduate with an exit award of Postgraduate Diploma (21 credits).
- The credit requirements are subject to review and change.
- The above required credits for each programme include 1-credit bearing Academic Integrity and Ethics subject for which credit fee will not be charged.

Scholarships

Entry scholarships may be provided by individual programme-offering departments. The Hong Kong Future Talents Scholarship Scheme for Advanced Studies (FTSS) offered by the University Grants Committee are available for the Master of Science in Building Services Engineering and the Master of Science in Geomatics programmes. Local students who accept admission offers to the approved programmes will be invited by their departments to apply for the FTSS.

PolyU reserves the right to change the terms or withdraw the above scholarships. Please visit www.polyu.edu.hk/study/pg/taught-postgraduate/financial-assistance-and-scholarships-tpg for up-to-date information.

Financial Assistance
and Scholarships





THE HONG KONG
POLYTECHNIC UNIVERSITY
香港理工大學



Faculty of Construction and Environment
建設及環境學院

BEEE

Department of
Building Environment and
Energy Engineering

Master of Engineering in Building Services Engineering 屋宇設備工程學工學碩士

CODE
33082

STUDY MODE
Mixed Mode

CREDIT REQUIRED
31

DURATION
1 year (Full-time)
2 years (Part-time)

Aims

The MEng in Building Services Engineering is an integrated Master's degree programme that covers a study of engineering and related knowledge which is both deeper and broader than the BEng (Hons) in Building Sciences and Engineering (formerly known as the BEng (Hons) in Building Services Engineering). The broadened and deepened knowledge and skills enable graduates to handle and manage engineering projects that are large in scale (both in the size of project and the investment involved) and complex and varied in nature, which require more effective collaboration amongst professionals from various disciplines, and may have significant social, economic and environmental impacts.

Characteristics

The programme provides a means for a limited number of the most able graduates from the BEng (Hons) in Building Sciences and Engineering (formerly known as the BEng (Hons) in Building Services Engineering) programme or other equivalently qualified students to develop towards leadership roles in the building services engineering profession by completing a Dissertation, studying additional enhanced and extended technical, management and environmental subjects, and receiving extra training in language skills.



Professional Recognition

Accreditation by the Chartered Institution of Building Services Engineers (CIBSE) as suitable further learning to meet the academic requirement for CEng registration for the 2026/27 intake cohort and onwards is subject to approval.

Entrance Requirements

Graduating students from BEng programmes in building services engineering, building environmental and equipment engineering, mechanical engineering, electrical engineering, thermal engineering, as well as energy and power engineering. Applicants with equivalent qualifications may also apply for admission and will be considered on individual merit.

If you are not a native speaker of English, and your Bachelor's degree or equivalent qualification is awarded by institutions where the medium of instruction is not English, you are expected to fulfil the University's minimum English language requirement for admission purposes.

Individual cases will be considered on their own merit by the department. Applicants may be required to attend interviews or tests to further demonstrate their language proficiency.

Fees

Tuition Fee	Initial Registration Credits
HK\$9,200 per credit for local and non-local students	12 (Full-time)
(No tuition fee required for 1-credit Academic Integrity and Ethics (AIE) subject)	6 (Part-time)

New students are required to pay an initial tuition fee (i.e., number of initial registration credits x tuition fee per credit) when they take up their offer. The initial tuition fee will be converted to form part of the tuition fee. Tuition fee for the first semester shall be settled in full by the payment deadline as specified in the debit note.

Initial tuition fees paid are neither refundable nor transferable, except in the case of programme cancellation. The University also reserves the right to revise its tuition fees from time to time.

Source of information: Study@PolyU

This leaflet contains information known as of September 2025.

Contents of this leaflet are subject to review and change without prior notice.

Department of Building Environment and Energy Engineering

Enquiries

✉ beee.enquiry@polyu.edu.hk

☎ (852) 2766-5847

🌐 www.polyu.edu.hk/beee

FOLLOW US

f PolyU.BEEE

📷 PolyU.BEEE

▶ BEEEpolyu



THE HONG KONG
POLYTECHNIC UNIVERSITY
香港理工大學



Faculty of Construction and Environment
建設及環境學院

BEEE

Department of
Building Environment and
Energy Engineering

Master of Science in Building Services Engineering 屋宇設備工程學理學碩士

CODE
33084

STUDY MODE
Mixed Mode

CREDIT REQUIRED
31

DURATION
1 year (Full-time)
2.5 years (Part-time)

Aims

- To position PolyU as the primary provider of high-level building services engineering education, training, research and consultancy services in both private and public sectors in Hong Kong and the Pearl River Delta;
- To continue to meet the market demand for professional education and training in the field of building services engineering on the basis of continuous research and development and to maintain strong links with industry and professional institutions in Hong Kong and around the world;
- To enhance the specialist skills of graduates and professionals in the building services engineering sector, and to meet the need for locally-trained professionals and innovative building services engineers in consultancy, contracting, building management, research and development; and
- To facilitate students' development for leadership roles in the building services engineering profession.

Characteristics

The multidisciplinary nature of this programme not only offers students advanced knowledge in their specialist areas, but also expands their perspective of the broader field of building services engineering. Students can take a combination of subjects to suit their careers and specialism developments, and they can also choose an appropriate dissertation project.



Professional Recognition

Accreditation by the Chartered Institution of Building Services Engineers (CIBSE) as suitable further learning to meet the academic requirement for CEng registration for the 2026/27 intake cohort and onwards is subject to approval.

Entrance Requirements

- A Bachelor's degree with Honours in building services engineering, mechanical or electrical engineering, or the equivalent; OR
- A professional qualification, e.g., full membership of The Hong Kong Institution of Engineers (HKIE) or the Chartered Institution of Building Services Engineers (CIBSE), plus work experience in any branch of building services engineering, such as design and consulting, contracting, building operation and maintenance, property development and management or research.

Evidence of an employer's support or sponsorship is advantageous, and relevant work experience in a building services engineering-related role is preferred.

If you are not a native speaker of English, and your Bachelor's degree or equivalent qualification is awarded by institutions where the medium of instruction is not English, you are expected to fulfil the University's minimum English language requirement for admission purposes.

Fees

Tuition Fee	Initial Registration Credits
HK\$9,200 per credit for local and non-local students	12 (Full-time)
(No tuition fee required for 1-credit Academic Integrity and Ethics (AIE) subject)	6 (Part-time)

New students are required to pay an initial tuition fee (i.e., number of initial registration credits x tuition fee per credit) when they take up their offer. The initial tuition fee will be converted to form part of the tuition fee. Tuition fee for the first semester shall be settled in full by the payment deadline as specified in the debit note.

Initial tuition fees paid are neither refundable nor transferable, except in the case of programme cancellation. The University also reserves the right to revise its tuition fees from time to time.

Source of information: Study@PolyU

This leaflet contains information known as of September 2025.

Contents of this leaflet are subject to review and change without prior notice.

Department of Building Environment and Energy Engineering

Enquiries

✉ beee.enquiry@polyu.edu.hk

☎ (852) 2766-5847

🌐 www.polyu.edu.hk/beee

FOLLOW US

📘 PolyU.BEEE

📷 PolyU_BEEE

▶ BEEEpolyu

Master of Science in Carbon Neutral Cities and Urban Sustainability 碳中和城市及可持續性理學碩士

CODE
33088

STUDY MODE
Mixed Mode

CREDIT REQUIRED
31

DURATION
1 year (Full-time)
2.5 years (Part-time)

Aims

The programme is designed to cut across traditional boundaries among architecture, construction and management, investment, surveying, engineering and environmental sciences to take a broad view of the subject. The programme focuses on the technical, engineering, policy and economic related topics on carbon neutrality, especially on urban mobility, buildings and sustainability, so that the students will have multidisciplinary knowledge and skills to design and assess urban sustainability and carbon-neutral/zero-energy buildings, communities and cities.

Characteristics

This programme provides up-to-date knowledge in sustainable urban development based on contemporary research findings. It is suitable for local, Mainland China and international planners, surveyors, environmental practitioners, consultancy professionals, engineers, government officers, business managers and graduates from relevant courses.



Entrance Requirements

A Bachelor's degree with Honours relevant to construction, real estate, urban planning, architecture, environmental science or equivalent qualifications (including recognised professional qualifications).

If you are not a native speaker of English, and your Bachelor's degree or equivalent qualification is awarded by institutions where the medium of instruction is not English, you are expected to fulfil the University's minimum English language requirement for admission purposes.

Fees

Tuition Fee	Initial Registration Credits
HK\$10,600 per credit for local and non-local students	12 (Full-time)
(No tuition fee required for 1-credit Academic Integrity and Ethics (AIE) subject)	6 (Part-time)

New students are required to pay an initial tuition fee (i.e., number of initial registration credits x tuition fee per credit) when they take up their offer. The initial tuition fee will be converted to form part of the tuition fee. Tuition fee for the first semester shall be settled in full by the payment deadline as specified in the debit note.

Initial tuition fees paid are neither refundable nor transferable, except in the case of programme cancellation. The University also reserves the right to revise its tuition fees from time to time.

Source of information: Study@PolyU

This leaflet contains information known as of September 2025.

Contents of this leaflet are subject to review and change without prior notice.

Department of Building Environment and Energy Engineering

Enquiries

✉ beee.enquiry@polyu.edu.hk

☎ (852) 2766-5847

🌐 www.polyu.edu.hk/beee

FOLLOW US

📘 PolyU.BEEE

📷 PolyU_BEEE

▶ BEEEpolyu

Master of Science in Facility Management 設施管理學碩士

Clothing Insulation		Metabolic Rate		
Clo = 0.36	Clo = 0.57	MET= 1	MET=1.1	MET= 1.4
Clo = 0.61	Clo = 0.67	MET= 1.5	MET= 1.7	MET= 4

CODE
33085

STUDY MODE
Mixed Mode

CREDIT REQUIRED
31

DURATION
1 year (Full-time)
2.5 years (Part-time)

Aims

Facility management has developed rapidly over the past few decades, initially in North America and the UK and more recently in Europe, Australia and Asia. The development of facility management education and training has been driven primarily by demand at the postgraduate level, and it has drawn from a broad base of existing professional disciplines ranging from those involved with engineering-based building services to those related to property management and space planning. Facility management as a discipline is grounded in the field of management, requiring a clear understanding of the nature and demands of an organisation's core business requirements.

The role of the facility manager is increasingly recognised as critical in supporting the realisation of business plans through the careful alignment of an organisation's physical assets with the appropriate sourcing of facility support services. To be effective, a facility manager must have broad knowledge of all of the elements that affect the efficient performance of buildings, appropriate policies, management processes and the people who work in them.

Characteristics

This programme is structured to achieve a balance between theory and practice, with the following emphases:

- To provide facility management professionals with opportunities to critically review and update their knowledge and skills in the management of people, property and technology;
- To integrate facility management practice with the efficient and effective management of business resources;
- To apply innovative methods and procedures in the practice of facility management; and
- To bring into focus and develop appropriate action plans for facility managers and operators to deal with workplace issues in a dynamic business environment.

Professional Recognition

Accreditation by the Royal Institution of Chartered Surveyors (RICS) through the Facilities Management pathway for the 2026/27 intake cohort and onwards is subject to approval.

Accreditation by the Chartered Institution of Building Services Engineers (CIBSE) as suitable further learning to meet the academic requirement for CEng registration for the 2026/27 intake cohort and onwards is subject to approval.

Accreditation by The Hong Kong Institute of Facility Management (HKIFM) for the 2026/27 intake cohort and onwards is subject to approval.

Entrance Requirements

- A Bachelor's degree with Honours in architecture, interior design, construction, building surveying, estate management, property/facility management, building services engineering, business or the equivalent;

OR

- A professional qualification, plus relevant professional experience that is related to the building industry or property/facility management, e.g., full membership of the CIBSE, CIH, CIOB, HKIA, HKIE, HKIFM, HKIS or RICS.

Candidates who have substantial experience in facility management-related areas, but who lack formal academic qualifications, may be admitted to the programme subject to an interview and/or a review of their experience. In considering such candidates, PolyU will decide whether their experience can be deemed equivalent to an Honours degree awarded by a recognised university.

If you are not a native speaker of English, and your Bachelor's degree or equivalent qualification is awarded by institutions where the medium of instruction is not English, you are expected to fulfil the University's minimum English language requirement for admission purposes.

Fees

Tuition Fee	Initial Registration Credits
HK\$7,400 per credit for local and non-local students	12 (Full-time)
(No tuition fee required for 1-credit Academic Integrity and Ethics (AIE) subject)	6 (Part-time)

New students are required to pay an initial tuition fee (i.e., number of initial registration credits x tuition fee per credit) when they take up their offer. The initial tuition fee will be converted to form part of the tuition fee. Tuition fee for the first semester shall be settled in full by the payment deadline as specified in the debit note.

Initial tuition fees paid are neither refundable nor transferable, except in the case of programme cancellation. The University also reserves the right to revise its tuition fees from time to time.

Source of information: Study@PolyU

This leaflet contains information known as of September 2025.

Contents of this leaflet are subject to review and change without prior notice.

Department of Building Environment and Energy Engineering

Enquiries

✉ beee.enquiry@polyu.edu.hk

☎ (852) 2766-5847

🌐 www.polyu.edu.hk/beee

FOLLOW US

📘 PolyU.BEEE

📷 PolyU_BEEE

▶ BEEEpolyu

Master of Science in Fire and Safety Engineering 消防及安全工程學理學碩士

CODE
33086

STUDY MODE
Mixed Mode

CREDIT REQUIRED
31

DURATION
1 year (Full-time)
2.5 years (Part-time)

Aims

The programme aims to enhance the professional knowledge and skills of students in fire and safety engineering, and improve their learning attitudes, study skills, and intellectual and imaginative powers. The programme focuses on fundamental analysis and development of fire and safety science, and engineering concepts. It also offers high-quality teaching in the new topic of engineering performance-based fire codes. In safety engineering, the focus is on improving the safety of buildings, and accident prevention, hazard assessment, risk analysis, safety management and auditing, and safety in construction sites are also covered. Overall, the programme caters not only to graduates and professionals in building services engineering and fire and safety engineering, but also to those in the broader industries of construction, architecture, surveying and applied sciences.

Characteristics

Students gain in-depth knowledge of fire and safety engineering, as they take subjects that are related to general building services engineering practices and come to appreciate how fire and safety designs are integrated into buildings. The programme also helps students to develop research techniques and critical-thinking skills.



Professional Recognition

Accreditation by the Chartered Institution of Building Services Engineers (CIBSE) as suitable further learning to meet the academic requirement for CEng registration for the 2026/27 intake cohort and onwards is subject to approval.

Entrance Requirements

A Bachelor's degree with Honours in fire engineering, safety engineering, building services engineering, building sciences and engineering, construction, architecture, building surveying, building technology, applied science, engineering, physics or chemistry; or the equivalent (including recognised professional qualifications).

Fees

Tuition Fee	Initial Registration Credits
HK\$7,400 per credit for local and non-local students	12 (Full-time)
(No tuition fee required for 1-credit Academic Integrity and Ethics (AIE) subject)	6 (Part-time)

New students are required to pay an initial tuition fee (i.e., number of initial registration credits x tuition fee per credit) when they take up their offer. The initial tuition fee will be converted to form part of the tuition fee. Tuition fee for the first semester shall be settled in full by the payment deadline as specified in the debit note.

Initial tuition fees paid are neither refundable nor transferable, except in the case of programme cancellation. The University also reserves the right to revise its tuition fees from time to time.

Source of information: *Study@PolyU*

This leaflet contains information known as of September 2025.

Contents of this leaflet are subject to review and change without prior notice.

Department of Building Environment and Energy Engineering

Enquiries

✉ beee.enquiry@polyu.edu.hk

☎ (852) 2766-5847

🌐 www.polyu.edu.hk/beee

FOLLOW US

📘 PolyU.BEEE

📷 PolyU_BEEE

▶ BEEEpolyu

Master of Science in High Performance Buildings 高效能建築理學碩士

CODE
33087

STUDY MODE
Mixed Mode

CREDIT REQUIRED
31

DURATION
1 year (Full-time)
2.5 years (Part-time)

Aims

The mission of the High Performance Buildings (HPB) programme is to engage in education and research for the advancement of high performance buildings. In particular, the HPB programme provides an opportunity for students to broaden and deepen their knowledge on assessment of High Performance Buildings, which impose minimal impacts on global carbon footprints (global impacts), and facilitate optimised performance of building systems (building impacts), as well as the best indoor environments for the health and well-being of occupants.

To fulfil this mission, the High Performance Buildings programme adopts an interdisciplinary approach by linking sustainable development and high-rise building construction together with socio-economic development, focusing on climate changes, carbon footprint assessment, building services system management and optimisation, and indoor environmental quality evaluation. It is designed to cut across traditional boundaries of management, engineering and environmental sciences to take a broad view of sustainability issues. Integrating knowledge of High Performance Buildings and urban construction, this programme provides the most up-to-date knowledge based upon contemporary research findings.

Characteristics

The multidisciplinary nature of the programme not only offers students advanced knowledge in their specialist areas, but also expands their perspective of the broader field of building services engineering. Students can take a combination of subjects to suit their careers, and can also choose an appropriate dissertation project.



Professional Recognition

Accreditation by the Chartered Institution of Building Services Engineers (CIBSE) as suitable further learning to meet the academic requirement for CEng registration for the 2026/27 intake cohort and onwards is subject to approval.

Entrance Requirements

A Bachelor's Degree with Honours relevant to architecture, construction and real estate industry, or the equivalent (including recognised professional qualifications).

If you are not a native speaker of English, and your Bachelor's degree or equivalent qualification is awarded by institutions where the medium of instruction is not English, you are expected to fulfil the University's minimum English language requirement for admission purposes.

Individual cases will be considered on their own merit by the department. Applicants may be required to attend interviews or tests to further demonstrate their language proficiency.

Fees

Tuition Fee	Initial Registration Credits
HK\$7,400 per credit for local and non-local students	12 (Full-time)
(No tuition fee required for 1-credit Academic Integrity and Ethics (AIE) subject)	6 (Part-time)

New students are required to pay an initial tuition fee (i.e., number of initial registration credits x tuition fee per credit) when they take up their offer. The initial tuition fee will be converted to form part of the tuition fee. Tuition fee for the first semester shall be settled in full by the payment deadline as specified in the debit note.

Initial tuition fees paid are neither refundable nor transferable, except in the case of programme cancellation. The University also reserves the right to revise its tuition fees from time to time.

Source of information: Study@PolyU

This leaflet contains information known as of September 2025.

Contents of this leaflet are subject to review and change without prior notice.

Department of Building Environment and Energy Engineering

Enquiries

✉ beee.enquiry@polyu.edu.hk

☎ (852) 2766-5847

🌐 www.polyu.edu.hk/beee

FOLLOW US

📘 PolyU.BEEE

📷 PolyU_BEEE

▶ BEEEpolyu



THE HONG KONG
POLYTECHNIC UNIVERSITY
香港理工大學



Faculty of Construction and Environment
建設及環境學院

BRE

Department of
Building and Real Estate

Doctor of International Real Estate and Construction 國際房地產及建築博士

CODE
32109

STUDY MODE
Part-time

CREDIT REQUIRED
52

DURATION
3 years

Aims

The Doctor of International Real Estate and Construction programme is designed for senior executives with more than 8 years of experience in the construction and real estate industry, who thus possess the core knowledge and basic competence needed to fulfil their duties. Many of them have already attained a significant knowledge base. We help these professionals to build new ideas, develop positive values and attitudes, and upscale their capabilities for self-fulfilment and career advancement. It aims to provide a genuinely innovative professional development experience to enrich executives' theoretical and technical knowledge, develop their management and leadership skills, and equip them with the right mindset to fulfil senior or top management roles in the modern construction and real estate finance market.

The programme aims relating to personal and professional achievement are as follows:

1. To enrich participants' theoretical and technical knowledge for top-level advancement in the construction and real estate industry;
2. To develop participants' management and leadership skills; and
3. To equip participants with applicable alternative perspectives to address competition in the modern construction and real estate market.

Characteristics

Students are provided with the most advanced knowledge of the operation of the construction and real estate markets, including strategic construction project management, the application of information and digital technologies in the construction and real estate industry, urban economic processes, urban and regional planning, price determination for land and real estate, environmental issues and other relevant professional issues. Due to the complex influence of public policy development and the global economic environment, this programme will support the students with comprehensive thinking and analysis methods.



Entrance Requirements

- A Master's degree, preferably in a construction or real estate related area or relevant discipline, plus substantial industry experience (preferably at least 8 years) at middle to senior management level.
- Exceptionally, special admission to non-Master's degree holders may be offered to experienced senior industry executives, preferably possessing at least 12 years of industry experience in management positions. Such candidates will only be considered under special circumstances and on a case-by-case basis.

The entrance requirements for English language are those set by the University. If you are not a native speaker of English, and your Bachelor's degree or equivalent qualification is awarded by institutions where the medium of instruction is not English, you are expected to fulfil the University's minimum English language requirement for admission purposes.

Fees

Tuition Fee	Initial Registration Credits
HK\$10,200 per credit for local and non-local students (No tuition fee required for 1-credit Academic Integrity and Ethics (AIE) subject)	6

New students are required to pay an initial tuition fee (i.e., number of initial registration credits x tuition fee per credit) when they take up their offer. The initial tuition fee will be converted to form part of the tuition fee. Tuition fee for the first semester shall be settled in full by the payment deadline as specified in the debit note.

Initial tuition fees paid are neither refundable nor transferable, except in the case of programme cancellation. The University also reserves the right to revise its tuition fees from time to time.

Source of information: Study@PolyU

This leaflet contains information known as of September 2025.

Contents of this leaflet are subject to review and change without prior notice.

Department of Building and Real Estate

Enquiries

✉ connie.yap@polyu.edu.hk

☎ (852) 3400-3819

🌐 www.polyu.edu.hk/bre

FOLLOW US

Facebook Instagram LinkedIn YouTube HKPolyUBRE

香港理工大学建筑及房地产学系

理大建筑及房地产学系



THE HONG KONG
POLYTECHNIC UNIVERSITY
香港理工大學



Faculty of Construction and Environment
建設及環境學院

BRE

Department of
Building and Real Estate

Master of Science in Construction and Real Estate 建築及房地產學理學碩士

CODE

32111

STUDY MODE

Mixed Mode

CREDIT REQUIRED

31

DURATION

1 year (Full-time)
2.5 years (Part-time)

Aims

The programme aims to broaden and deepen students' knowledge in the construction and real estate sectors.

We provide:

- Up-to-date knowledge in the construction and real estate sectors based on contemporary research findings;
- Specific specialist skills that are required in the construction and real estate sectors, and beyond the first undergraduate degree level; and
- The opportunity for students to study construction and real estate practices in Mainland China.

Characteristics

This programme suits graduates and professionals who are qualified in architecture, building, building services engineering, building surveying, civil engineering, construction management, quantity surveying, project management, property management, real estate or town planning at various levels of responsibility. It offers students the flexibility to choose subjects from the disciplines of construction, planning and development or commercial property.



Professional Recognition

The MSc programme is accredited by the Royal Institution of Chartered Surveyors (RICS) as meeting their academic requirements. MSc graduates may apply for full membership of the RICS based on their appropriate period of relevant work experience in the construction and/or real estate sectors.

Entrance Requirements

- A Bachelor's degree with Honours;
OR
- A Bachelor's degree in a construction or real estate related discipline;
OR
- Corporate membership of a relevant professional institution.

If you are not a native speaker of English, and your Bachelor's degree or equivalent qualification is awarded by institutions where the medium of instruction is not English, you are expected to fulfil the University's minimum English language requirement for admission purposes.

Fees

Tuition Fee	Initial Registration Credits
HK\$9,000 per credit for local and non-local students	12 (Full-time)
(No tuition fee required for 1-credit Academic Integrity and Ethics (AIE) subject)	6 (Part-time)

New students are required to pay an initial tuition fee (i.e., number of initial registration credits x tuition fee per credit) when they take up their offer. The initial tuition fee will be converted to form part of the tuition fee. Tuition fee for the first semester shall be settled in full by the payment deadline as specified in the debit note.

Initial tuition fees paid are neither refundable nor transferable, except in the case of programme cancellation. The University also reserves the right to revise its tuition fees from time to time.

Source of information: Study@PolyU

This leaflet contains information known as of September 2025.

Contents of this leaflet are subject to review and change without prior notice.

Department of Building and Real Estate

Enquiries

✉ ka-man.mak@polyu.edu.hk

☎ (852) 3400-8121

🌐 www.polyu.edu.hk/bre

FOLLOW US

Facebook Instagram LinkedIn YouTube HKPolyUBRE

香港理工大学建筑及房地产学系

理大建筑及房地产学系



THE HONG KONG
POLYTECHNIC UNIVERSITY
香港理工大學



Faculty of Construction and Environment
建設及環境學院

BRE

Department of
Building and Real Estate

Master of Science in Intelligent Construction 智能建造理學碩士

CODE
32114

STUDY MODE
Mixed Mode

CREDIT REQUIRED
31

DURATION
1 year (Full-time)
2 years (Part-time)

Aims

The programme aims to equip professionals in construction and related areas with strong digital construction-related skills supported by intelligent construction technology (ICT) tools, enabling them to perform their professional services in construction projects more intelligently than before. The core objectives of the programme are as follows.

- To equip students with state-of-the-art ICT and digital construction technical skills required for construction projects, such as skills in building information modelling, robotics, three-dimensional (3D) printing, visualisation and interactive technologies, and machine learning.
- To integrate the necessary knowledge and a range of analytical tools, digital skills and transferable skills for the needs of construction professionals.
- To develop professionals' skills in construction engineering management through pioneering digital approaches covering both theoretical and applied aspects.
- To cultivate critical thinking and a research ethos in decision-making and problem-solving, in the context of managing construction projects using digital approaches.

Characteristics

The MSc in Intelligent Construction programme is designed to meet the requirements of the “Construction 2.0 – Time to Change”, an initiative developed and promoted by the Hong Kong SAR Government, and to meet the global demand for digitalisation in the construction industry. The programme focuses on using pioneering intelligent construction technology (ICT) approaches to equip students with theoretical and applied knowledge on state-of-the-art ICTs and with skills in construction engineering management.

The programme's philosophy is to prepare graduates with a strong background to cope with emerging challenges in the construction industry, and to demonstrate how ICT tools can be exploited to tackle real-world complex problems in construction. The programme is designed to enhance the digital knowledge and capability of construction professionals and promote wide adoption of ICT in the construction industry. This is consistent with the aim of the Hong Kong SAR Government's initiative of Construction 2.0 and of intelligent digitalisation of public works projects to benefit the construction industry at large in Hong Kong.

Entrance Requirements

- A Bachelor's degree in the disciplines of architecture, building, building services engineering, building sciences and engineering, building surveying, civil engineering, construction management, quantity surveying, project management, information technology or other related disciplines from recognised institutions.
- Corporate membership in relevant professional institutions may be considered for exceptional admissions of non-Bachelor's degree holders who possess related work experience in the construction industry.

If you are not a native speaker of English, and your Bachelor's degree or equivalent qualification is awarded by institutions where the medium of instruction is not English, you are expected to fulfil the University's minimum English language requirement for admission purposes.

Fees

Tuition Fee	Initial Registration Credits
HK\$8,900 per credit for local and non-local students	12 (Full-time)
(No tuition fee required for 1-credit Academic Integrity and Ethics (AIE) subject)	6 (Part-time)

New students are required to pay an initial tuition fee (i.e., number of initial registration credits x tuition fee per credit) when they take up their offer. The initial tuition fee will be converted to form part of the tuition fee. Tuition fee for the first semester shall be settled in full by the payment deadline as specified in the debit note.

Initial tuition fees paid are neither refundable nor transferable, except in the case of programme cancellation. The University also reserves the right to revise its tuition fees from time to time.

Source of information: Study@PolyU

This leaflet contains information known as of September 2025.

Contents of this leaflet are subject to review and change without prior notice.

Department of Building and Real Estate

Enquiries

✉ sally.sm.chan@polyu.edu.hk

☎ (852) 2766-5807

🌐 www.polyu.edu.hk/bre

FOLLOW US

Facebook Instagram LinkedIn YouTube HKPolyUBRE

香港理工大学建筑及房地产学系

理大建筑及房地产学系



THE HONG KONG
POLYTECHNIC UNIVERSITY
香港理工大學



Faculty of Construction and Environment
建設及環境學院

BRE

Department of
Building and Real Estate

Master of Science in Project Management 項目管理理學碩士

CODE
32113

STUDY MODE
Mixed Mode

CREDIT REQUIRED
31

DURATION
1 year (Full-time)
2.5 years (Part-time)

Aims

This programme aims to benefit professionals who already have a Bachelor's degree in construction or related disciplines and who work in or around Hong Kong. Primarily, the programme offers opportunities for practising architects, construction managers, engineers, surveyors, technologists and related professionals to broaden and deepen their knowledge of project management.

Many businesses need professionals who are skilled in project management and are also capable of innovating solutions to complex problems. Thus, this programme helps students to develop an innovative approach to problem solving in general and to project management in particular. This produces highly skilled management professionals to operate in Hong Kong and the surrounding region. Moreover, the dissertation allows MSc students to deeply examine a topic of their own choice.

Characteristics

The programme has a student-centred learning philosophy, i.e., it teaches students how to learn, thereby making good use of the pool of knowledge and experience within each subject. As the staff of the programme are leading researchers in their fields or professionals who share their knowledge of the industry, they use their own experience to encourage students to learn systematically. This introduces students to the theories and good practices of managing projects from both technological and business perspectives.

Professional Recognition

The MSc programme has been accredited by the Chartered Institute of Building (CIOB), the Hong Kong Institute of Project Management (HKIPM) and the Royal Institution of Chartered Surveyors (RICS), as it fulfils these organisations' academic requirements for professional assessment that can lead to corporate membership. These accreditations are subject to regular reviews by the respective professional institutions.

Entrance Requirements

A Bachelor's degree in a relevant discipline or the equivalent (including recognised professional qualifications).

If you are not a native speaker of English, and your Bachelor's degree or equivalent qualification is awarded by institutions where the medium of instruction is not English, you are expected to fulfil the University's minimum English language requirement for admission purposes.

Fees

Tuition Fee	Initial Registration Credits
HK\$9,000 per credit for local and non-local students	12 (Full-time)
(No tuition fee required for 1-credit Academic Integrity and Ethics (AIE) subject)	6 (Part-time)

New students are required to pay an initial tuition fee (i.e., number of initial registration credits x tuition fee per credit) when they take up their offer. The initial tuition fee will be converted to form part of the tuition fee. Tuition fee for the first semester shall be settled in full by the payment deadline as specified in the debit note.

Initial tuition fees paid are neither refundable nor transferable, except in the case of programme cancellation. The University also reserves the right to revise its tuition fees from time to time.

Source of information: Study@PolyU

This leaflet contains information known as of September 2025.

Contents of this leaflet are subject to review and change without prior notice.

Department of Building and Real Estate

Enquiries

✉ queenie.wong@polyu.edu.hk

☎ (852) 3400-8122

🌐 www.polyu.edu.hk/bre

FOLLOW US

Facebook Instagram LinkedIn YouTube HKPolyUBRE

香港理工大学建筑及房地产学系

理大建筑及房地产学系



THE HONG KONG
POLYTECHNIC UNIVERSITY
香港理工大學



Faculty of Construction and Environment
建設及環境學院

CEE

Department of
Civil and Environmental
Engineering

Master of Science in Civil Engineering 土木工程學理學碩士

CODE

31077

STUDY MODE

Mixed Mode

CREDIT REQUIRED

31

DURATION

1 year (Full-time)
2.5 years (Part-time)

Aims

Through the programme, students will pursue in-depth studies of topics that are related to their civil engineering field or broaden their knowledge of civil engineering by studying topics that are beyond their present field.

We are keen to develop students' capabilities of designing engineered systems or processes to meet desired needs in civil engineering projects within realistic constraints.

Our programme is designed to cultivate students' strategic thinking skills in dealing with complex problems and situations pertinent to their professional practice, and to enhance their learning capabilities for continual professional development through inquiry and reflection on professional practice.

Characteristics

In this programme, practising civil engineers can pursue in-depth studies and acquire specialised skills in general civil engineering, structural engineering and transportation engineering. Graduates should be able to demonstrate a high degree of competence in modern construction technology after completion of the programme.



Entrance Requirements

- A Bachelor's degree with Honours in civil engineering or an equivalent qualification.
- Applicants must also meet the English language requirement of the University.

Fees

Tuition Fee	Initial Registration Credits
HK\$8,000 per credit for local and non-local students	12 (Full-time)
(No tuition fee required for 1-credit Academic Integrity and Ethics (AIE) subject)	6 (Part-time)

New students are required to pay an initial tuition fee (i.e., number of initial registration credits x tuition fee per credit) when they take up their offer. The initial tuition fee will be converted to form part of the tuition fee. Tuition fee for the first semester shall be settled in full by the payment deadline as specified in the debit note.

Initial tuition fees paid are neither refundable nor transferable, except in the case of programme cancellation. The University also reserves the right to revise its tuition fees from time to time.

Source of information: Study@PolyU

This leaflet contains information known as of September 2025.

Contents of this leaflet are subject to review and change without prior notice.

Department of Civil and Environmental Engineering

Enquiries

✉ sofi.mok@polyu.edu.hk

☎ (852) 2766-4789

🌐 www.polyu.edu.hk/cee

FOLLOW US

Facebook: [cee.hkpolyu](https://www.facebook.com/cee.hkpolyu)

Instagram: [cee.hkpolyu](https://www.instagram.com/cee.hkpolyu)

WhatsApp: 理大土木及環境工程學 CEE

Twitter: PolyUCEE 土木及环境工程学系



THE HONG KONG
POLYTECHNIC UNIVERSITY
香港理工大學



Faculty of Construction and Environment
建設及環境學院

CEE

Department of
Civil and Environmental
Engineering

Master of Science in Environmental Management and Engineering 環境管理及工程學理學碩士

CODE
31078

STUDY MODE
Mixed Mode

CREDIT REQUIRED
31

DURATION
1 year (Full-time)
2.5 years (Part-time)

Aims

The programme provides EITHER (1) studies of a conversion nature for graduates without formal environmental qualifications who are working or who would like to work in the environmental protection field OR (2) studies of an in-depth nature for graduates who already possess a Bachelor's qualification in environmental science or engineering.

The programme provides students with engineering and management knowledge to tackle environmental engineering problems in the fields of construction and industrial and infrastructure development, and to confront challenges related to sustainable development and the achievement of carbon neutrality.

Characteristics

This programme, which offers both in-depth and conversion studies, is suitable for both graduates and professionals with previous qualifications who wish to gain advanced knowledge of environmental engineering and management or to diversify their expertise into the environmental fields. It allows students the flexibility to choose environmental engineering, environmental management, or carbon neutrality subjects to build up their knowledge in line with their specific needs.



Entrance Requirements

- A Bachelor's degree with Honours in environmental engineering, civil engineering, chemical engineering, building services engineering, mechanical engineering, applied sciences, or an equivalent qualification.
- Applicants must also meet the English language requirement of the University.

Fees

Tuition Fee	Initial Registration Credits
HK\$7,200 per credit for local and non-local students	12 (Full-time)
(No tuition fee required for 1-credit Academic Integrity and Ethics (AIE) subject)	6 (Part-time)

New students are required to pay an initial tuition fee (i.e., number of initial registration credits x tuition fee per credit) when they take up their offer. The initial tuition fee will be converted to form part of the tuition fee. Tuition fee for the first semester shall be settled in full by the payment deadline as specified in the debit note.

Initial tuition fees paid are neither refundable nor transferable, except in the case of programme cancellation. The University also reserves the right to revise its tuition fees from time to time.

Source of information: Study@PolyU

This leaflet contains information known as of September 2025.

Contents of this leaflet are subject to review and change without prior notice.

Department of Civil and Environmental Engineering

Enquiries

✉ tiffany.szeto@polyu.edu.hk

☎ (852) 3400-3969

🌐 www.polyu.edu.hk/cee

FOLLOW US

Facebook Instagram [cee.hkpolyu](https://www.instagram.com/cee.hkpolyu)

理大土木及環境工程學 CEE

PolyUCEE 土木及环境工程学系

Master of Science in Geomatics 測繪及地理資訊學理學碩士

CODE
34084

STUDY MODE
Mixed Mode

CREDIT REQUIRED
31

DURATION
1 year (Full-time)
2.5 years (Part-time)

Aims

This programme is designed for professionals in geographic information systems (GIS), surveying or related fields, and equips them with the theoretical understanding and practical skills required to specialise in GIS or land and engineering surveying.

Characteristics

This is a multidisciplinary programme for experienced professionals that advances of their knowledge of their chosen specialist areas and expands their perspectives on geomatics.

Professional Recognition

The MSc programme has been accredited by the following professional bodies:

- Chartered Institution of Civil Engineering Surveyors (CICES)
- The Hong Kong Institution of Engineering Surveyors (HKInstES)
- The Hong Kong Institute of Surveyors (HKIS)
- The Land Surveyors Board of Singapore (LSB)[#]
- Royal Institution of Chartered Surveyors (RICS)

[#]Recognition is contingent upon holding a relevant Bachelor's Degree accepted by LSB.



Entrance Requirements

- A Bachelor's degree with Honours in engineering, science or technology;
OR
- A Bachelor's degree with Honours in other relevant disciplines (such as a Bachelor of Arts (Honours) in Geography)[#];
OR
- A professional qualification plus relevant work experience related to surveying or GIS[#].

[#]Holders of these qualifications may be invited to attend interviews to assess their suitability for the programme.

Fees

Tuition Fee	Initial Registration Credits
HK\$7,200 per credit for local and non-local students	12 (Full-time)
(No tuition fee required for 1-credit Academic Integrity and Ethics (AIE) subject)	6 (Part-time)

New students are required to pay an initial tuition fee (i.e., number of initial registration credits x tuition fee per credit) when they take up their offer. The initial tuition fee will be converted to form part of the tuition fee. Tuition fee for the first semester shall be settled in full by the payment deadline as specified in the debit note.

Initial tuition fees paid are neither refundable nor transferable, except in the case of programme cancellation. The University also reserves the right to revise its tuition fees from time to time.

Source of information: Study@PolyU

This leaflet contains information known as of September 2025.

Contents of this leaflet are subject to review and change without prior notice.

Department of Land Surveying and Geo-Informatics

Enquiries

✉ lsgi.msc@polyu.edu.hk

☎ (852) 2766-5968

🌐 www.polyu.edu.hk/lsgi

FOLLOW US

📘 LSGI.PolyU

📷 lsgi.polyu

📞 2103611393

📱 PolyU-LSGI

Master of Science in Urban Informatics and Smart Cities 城市信息學及智慧城市理學碩士

CODE
34083

STUDY MODE
Mixed Mode

CREDIT REQUIRED
31

DURATION
1 year (Full-time)
2.5 years (Part-time)

Aims

To equip students to cope with challenges and other issues in cities by harnessing the power of informatics, big data and relevant techniques.

Characteristics

The programme focuses on three key areas, namely “Theory and Domain Knowledge”, “Technologies underpin Urban Informatics and Smart Cities” and “The Practice of Urban Informatics and Smart Cities Solutions”.

Professional Recognition

The MSc programme has been accredited by the following professional bodies:

- The Hong Kong Institute of Surveyors (HKIS)
- Royal Institution of Chartered Surveyors (RICS)



Entrance Requirements

A recognised Bachelor's degree in engineering, science, technology, or the equivalent.

If you are not a native speaker of English, and your Bachelor's degree or equivalent qualification is awarded by institutions where the medium of instruction is not English, you are expected to fulfil the University's minimum English language requirement for admission purposes.

Fees

Tuition Fee	Initial Registration Credits
HK\$8,800 per credit for local and non-local students	12 (Full-time)
(No tuition fee required for 1-credit Academic Integrity and Ethics (AIE) subject)	6 (Part-time)

New students are required to pay an initial tuition fee (i.e., number of initial registration credits x tuition fee per credit) when they take up their offer. The initial tuition fee will be converted to form part of the tuition fee. Tuition fee for the first semester shall be settled in full by the payment deadline as specified in the debit note.

Initial tuition fees paid are neither refundable nor transferable, except in the case of programme cancellation. The University also reserves the right to revise its tuition fees from time to time.

Source of information: Study@PolyU

This leaflet contains information known as of September 2025.

Contents of this leaflet are subject to review and change without prior notice.

Department of Land Surveying and Geo-Informatics

Enquiries

✉ lsgi.msc@polyu.edu.hk

☎ (852) 2766-5968

🌐 www.polyu.edu.hk/lsgi

FOLLOW US

Facebook LSGI.PolyU

Instagram lsgi.polyu

Phone 2103611393

YouTube PolyU-LSGI

Faculty of Construction and Environment



ZS1201, 12/F, South Tower, Block Z
The Hong Kong Polytechnic University
Hung Hom, Kowloon, Hong Kong



faculty.ce@polyu.edu.hk



(852) 3400-8496



www.polyu.edu.hk/fce

FOLLOW US



Faculty of Construction and Environment



[polyufce](https://www.instagram.com/polyufce)



FCE
Website