

变革世界的 学者型领袖

SCHOLAR-LEADERS
FOR THE REAL WORLD

Ⓟ • DBA

工商管理博士课程

Doctor of Business Administration

2024-2025

教学语言: 中文为主辅以英文

Medium of Instruction: Chinese supplemented with English



目录

02	香港理工大学
02	理大商学院
03	院长寄语
04	课程总监寄语
05	课程特色
06	国际协作
07	学员概况 (数据来自以英语授课的工商管理博士课程)
08	课程详情
11	入学须知
12	查询

香港理工大学

- 自 1937 年起提供应用型教育
- 与超过 280 家机构有合作关系
- 开设 160 余门课程
- 参与 2,750 多个研究项目

国际排名

#02

2023 年 QS 可持续发展大学排名
(香港)

#05

2024 年泰晤士高等教育世界大学排名
(香港)

#06

2021 年 QS 最佳 50 所创校未满 50 年大学排名

#14

2023 年泰晤士高等教育亚洲大学排名

理大商学院

- 全面的学术课程组合
- 170 多位世界级学者，包括会计、金融、物流、管理、信息管理、市场营销和运输等方面的专家
- 推进单一及多学科研究的研究与专家中心
- 国际化背景及多元文化环境
- 拥有 54,000 名校友

国际认证



国际排名

#01

科睿唯安科学网
2019-2021: 航运研究

#01

2023 年软科世界一流学科排名 (GRAS): 管理学

#04

2023 年世界最佳商业与管理大学

#45

2024 年世界大学商学与经济学学科排名

#52

美国达拉斯市德克萨斯大学世界百强商学院排名 2018-2022

#56

2023 年世界大学商业与管理学科排名



院长 寄语

欢迎加入香港理工大学工商管理学院。

工商管理学院（理大商学院）是一所世界一流的商学院，我们提供高质量的学术课程，并引领商业及相关学科的前沿研究。我们很荣幸获得 AACSB International（国际商学院促进协会）以及 EQUIS（欧洲管理发展基金会质量改进体系）认证。

理大商学院致力寻求 *IDEAS (Innovation-driven Education and Scholarship)*（创见—以创新及卓见推动教育发展^{与学术研究}），并以此理念连结持份者，以可持续发展的方式重点为香港和大湾区带来社会影响。我们通过教育课程以及与业界和专业人士的伙伴关系及紧密联系，实现知识与技术的转移。

理大商学院提供全面的本科及深造课程，其中众多课程获得专业机构的认可，涵盖会计、ESG、金融、物流、管理、市场营销、航运和运输等关键领域。除工商管理学士（BBA）、工商管理硕士（MBA）、工商管理博士（DBA）、管理学博士（DMgt）、金融科技博士（DFinTech）和专业硕士学位课程外，还有硕士（Mphil）和博士（PhD）研究生课程。

为了保持我们学术课程和专业咨询的前沿性，全体教员透过学院的案例中心，以及品牌与市场营销、数字化转型、金融科技、领导力与创新、海事研究、航运与物流、可持续发展及创业金融等中心，在各自学科内和跨学科领域间开展具有开创性和影响力的研究。我们的科研能力在全球排名第 52 位（2018-2022 年 UTD 世界百强商学院排名）。

我们拥有来自全球的 170 多名世界级学者、4,900 名学生和 54,000 名校友，欢迎您加入我们。

鄭大昭

香港理工大学工商管理学院院长
冯尧敬—永亨银行工商管理教授
管理学讲座教授
郑大昭教授、工程师



课程总监 寄语



我非常荣幸介绍理大全新的工商管理博士（DBA）课程，本课程会以中文为主辅以英语授课，更好地配合现时学生的需要。许多跨国公司、私营企业和国有企业都在大湾区设有业务，我们希望全新的 DBA 中文项目将成为他们进一步学习的自然选择。理大的以英语授课的工商管理博士课程及与人民大学合作的管理学博士项目历史悠久而且有很高的声誉，两个项目已分别培养了 300 多名和 200 多名毕业生，其中包括一些知名的商界和政界领袖。

理大 DBA 课程旨在培养“学者型领导”，不仅提高管理人员或商业领袖的技术能力，而且将在跨学科分析框架之下系统地整合其丰富的实践经验。我们希望这个课程能激发学生创新思维，去解决社会上各种实际问题。

理大 DBA 课程的另一个特点是强调国际视野的广度和深度。我们与洛桑国际管理发展学院（IMD）及英国伦敦政治经济学院（LSE）等世界知名商学院建立了合作伙伴关系，让我们的 DBA 学生有机会学习其著名的领导力课程及高管教育课程。

理大在香港有近 30 年开办 DBA 课程的经验，我们欢迎您成为我们优秀学员中的一员。

工商管理博士课程总监
会计与金融学院实践教授（金融）
蒋励教授

The background is a deep purple with a large, stylized eye shape in the center. The eye is composed of concentric, radiating lines in shades of orange, yellow, and red. Scattered throughout the background are binary digits (0s and 1s) in various colors (white, blue, red, green).

课程特色

- 专业博士学位
- 系统化经验与知识，建立利于实践的理论框架。
- 理大 DBA 拥有 27 年历史，为香港首个工商管理博士课程，拥有强大香港及中国内地 DBA 毕业生网络。
- 灵活的混合选修模式，2 年全日制或 3 年兼读制修读。
- 了解数字技术的影响，加深对数字化转型的认识，以提高领导力和绩效。



国际协作

为提升理大 DBA 课程的国际化程度和学术活力，理大与 IMD 商学院及英国伦敦政治经济学院 (LSE) 建立了合作关系。



IMD 被《金融时报》连续十年（2012 年至 2022 年）评为世界前三名的高级管理教育机构。



在 2021 年 QS 世界大学学科排名中，伦敦政治经济学院连续第九年在社会科学和管理学科中排名欧洲第一，世界第二。

学员概况 (数据来自以英语授课的工商管理博士课程)

平均工作经验 15 年

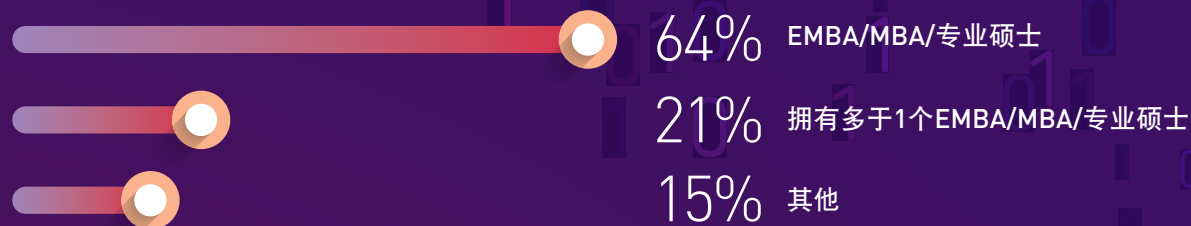
性别 70%
男性

30%
女性

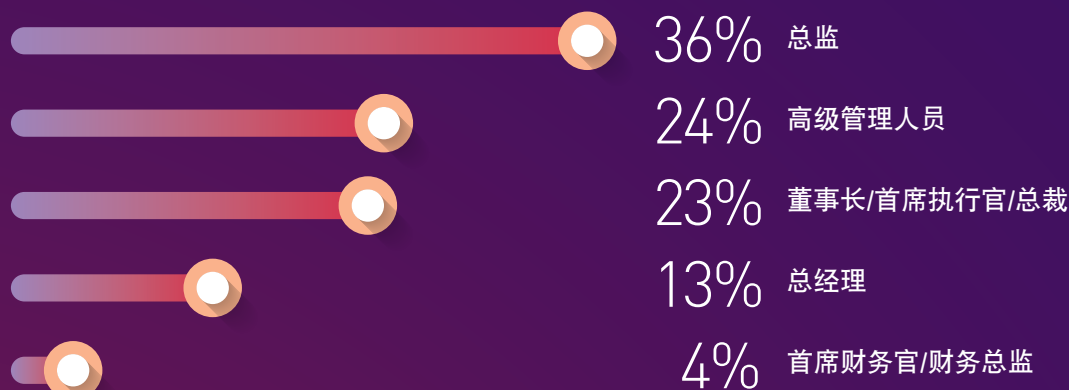
国籍 59%
本地

41%
非本地

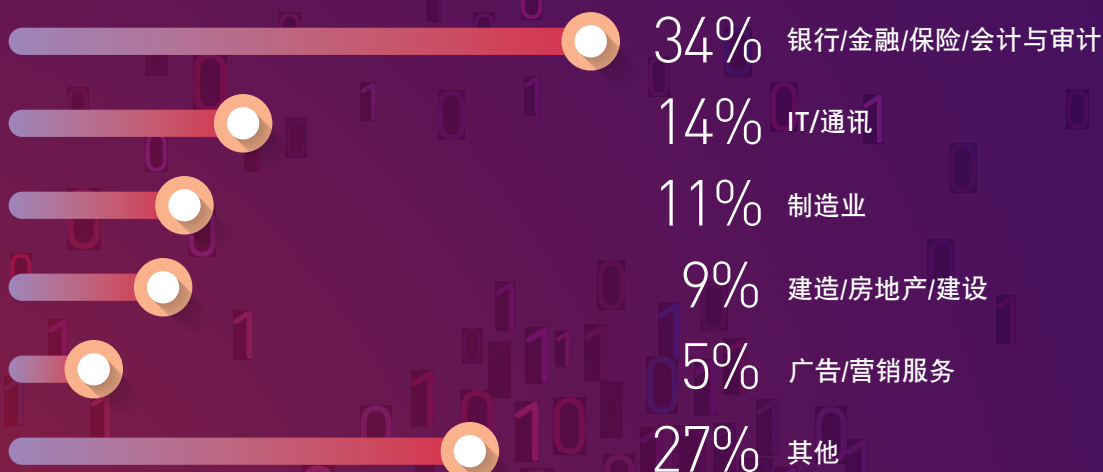
学历



工作岗位



行业





课程详情

目标

课程旨在培养高管人员成为「学者型领袖」，将研究成果以在真实世界中解难。课程设置融合学术内容和实际管理，对于学员的个人事业至关重要。

完成课程后，学生将能够提升其在广泛学习成果中界定的知识、技能和智力，该等学习成果以下列具体学习目标为基础：

i. 一般商业知识

学习目标：扩展，更新和加强学员有关工商业行政管理知识及理解数字转型对商业所带来的变革

ii. 专业知识

学习目标：深入了解各专业领域的知识包括初步认识数字科技所带来的影响

iii. 应用研究

学习目标：培养学员作原创性应用研究的能力和商业道德的意识

学制及正常修业年期

课程为混合制（全日或兼读）。学生可选择全日制（每学期修读 9 个学分或以上）或兼读制（每学期修读少于 9 个学分）形式修读课程。

学生需要修满总共 51 个学分的课程要求，其中包括：

- 8 门授课式科目（共 24 个学分）；
- 2 个 DBA 工作坊（Residential 1 为 1 个学分，Residential 2 为 2 个学分）；以及
- 1 篇 DBA 论文（Thesis I 即论文开题报告）为 8 个学分，Thesis II 为 16 个学分）。

全日制一般为 2 年，而兼读制一般为 3 年。学生如欲延长正常修业年期，可向商学院递交申请，以供考虑及审批。

在成功修毕 8 门授课式科目、2 个 DBA 工作坊及通过论文开题报告（即 Thesis I）（合共 35 学分）后可选择申请以「管理研究理学硕士学位」毕业。

教学语言

中文为主并辅以英文

课程内容

学生需修满 51 个学分，包括

- 24 个学分的课程作业：1 门必修科目、2 门核心科目和 5 门选修科目（每门 3 个学分）
- 3 个学分的 DBA 工作坊：Residential 1（1 个学分）和 Residential 2（2 个学分）
- 24 个学分的 DBA 论文：Thesis I（8 个学分）和 Thesis II（16 个学分）

所有授课式科目（每门 3 个学分）均为进阶科目，学生需对各科目具有相关背景知识。全日制学生一般需要在 12 个月内完成论文，而兼读制学生一般则需要 18 个月。2 个 DBA 工作坊分别在学期开始时和 DBA 论文开题报告时提供。

课程内容包括数据分析工具、数字技术和商业世界、技术和人工智能对领导力的影响等技术性内容，以及与人工智能和创业研究相关的定性及实验设计。

课程作业（24 个学分）

必修科目 为学生在研究技能方面奠定坚实基础：

- Business Research Analysis and Design

核心科目 为学生提供定性和定量研究方式和方法以及统计应用的深入评估。学生须完成以下两门科目：

- Econometrics Methods
- Qualitative Research and Experimental Design
- Statistical Analysis for Management Research

选修科目 允许学生追求特定的兴趣领域，课程着重学术阅读，为撰写 DBA 论文做好准备。学生须完成以下五门科目：

- Advanced Business Strategy
- Advanced Financial Management
- Advanced Topics in Economics for Managers
- Contemporary Issues in Financial Reporting and Corporate Disclosures
- Current Issues in Organizational Behaviour
- Frontier of Leadership Research
- Incentives and Monitoring in Accounting
- Independent Studies in Business
- Independent Studies in Business – International Collaborations Experience



在瑞士洛桑国际管理发展学院 (IMD)

IMD 商学院（洛桑国际管理发展学院）领导力课程（Orchestrating Winning Performance, OWP）为期 5 天，提供最新管理思维的课程。学生可为复杂的商业挑战找到实用的创新解决方案，并与来自各大洲的高级管理人员交流，开拓国际视野。

LSE Executive Education（伦敦政治经济学院高管教育）提供由 LSE 的教师授课，并结合工商界从业者实践经验的密集式强化课程。请访问理大 DBA 网站（www.polyu.edu.hk/fb/dba_cn）了解最新情况。

- Services Marketing Management
- Strategic Management of Information & Organization in Digital Economy
- Strategic Marketing
- Strategic Quality Management
- Strategic Supply Chain and Logistics Management

备注：

1. 在通常情况下，每门科目将在 2 年或 3 年提供一次。然而，每年开办的科目取决于师资力量，报读人数以及课程资源等因素影响，并非所有科目均会在 2 年或 3 年期间提供。而学生能否成功注册某科目亦视乎该科目学额。
2. 课程结构及科目详情时有复审及更改。

工作坊（3 个学分）

学生必须完成 2 个 DBA 工作坊。



DBA Residential 1 是一个项目介绍工作坊，在学期开始时进行。

2023 年曼谷 DBA（以英语授课）工作坊一：学生及教授合照

DBA Residential 2 是通常在学生完成所有授课式科目后举行的研究工作坊。主要目的是让学生进行其论文的开题报告，并为撰写论文作好准备。



2023 年香港 DBA（以英语授课）工作坊二：学生及教授合照

DBA 论文（24 个学分）

DBA 论文由两部分组成：DBA Thesis I 及 DBA Thesis II。学生需要完成 1 门必修科目、2 门核心科目及至少 3 门选修科目，才可开始撰写论文。学生须整合及运用所学知识，以批判性思维，严谨地探讨与商业或管理领域上感兴趣的课题。学生将迎接挑战，为管理实践做出重大贡献及/或提供创新见解。

入学须知

入学要求

- 持有硕士学位（宜与商业相关），及
- 具有 8 年或以上高层管理经验。
- 持有本科学位及取得认可专业资格的高层管理人员可获个别考虑。

母语并非英语，而学士/硕士学位或同等学历由非英语院校颁发的申请人，必须符合合理大最低英语语言要求，或通过由课程安排的英语考试。

申请者在递交申请时，须同时提交以下文件：

- 个人陈述
- 工作证明（至少 8 年）
- 学历证明（如毕业证书、学习成绩单等），若材料并非英文撰写，则需随附官方认证的英文翻译版本

如有必要，申请人可能会被要求提供其他文件。

申请资料不完整的将无法得到及时处理，且会降低被录取的机会。请确保填妥申请表上所有相关栏位，并附上所有必要文件。

通过审核的申请者将会被邀请参加面试。

学费及付款时间表

2024/25 学年的课程费用: 1,504,500 港元 (51 个学分)

8 门授课式科目的费用

708,000 港元 (24 个学分)

DBA 论文 (Thesis I 及 Thesis 2) 的费用

708,000 港元 (24 个学分)

2 个 DBA 工作坊的费用

88,500 港元 (DBA Residential 1 为 1 个学分,
DBA Residential 2 为 2 个学分)

期初付款

1 门授课式科目费用 (88,500 港元) 及 DBA Residential 1 的费用 (29,500 港元) 须于收到录取通知书后缴付。

期中付款

其他授课式科目的费用将按学分计算 (每个学分 29,500 港元)。应付金额须根据该学期所修读科目的学分总数而定。

8 个学分 DBA Thesis I 的费用 (236,000 港元) 及 DBA Residential 2 的费用 (59,000 港元) 须于注册 DBA Thesis I 后缴付。

期末付款

16 个学分 DBA Thesis II 的费用 (472,000 港元) 须于注册 DBA Thesis II 后缴付。

查询

关于学术问题

冯越博士

课程副总监

📞 (852) 2766 7127

✉ katherine.feng@polyu.edu.hk

关于其他资讯

📞 (852) 3400 3234 / (852) 3400 2584

📠 (852) 2365 7415

✉ fbdbace@polyu.edu.hk

🌐 www.polyu.edu.hk/fb/dba_cn

在线申请:

www.polyu.edu.hk/admission





CONTENTS

- 14 Why PolyU
- 14 Why PolyU Business School
- 15 Dean's Message
- 16 Programme Director's Message
- 17 Why PolyU DBA
- 18 International Collaborations
- 19 Class Profile
(Data from DBA programme taught in English)
- 20 Programme Details
- 23 Admission
- 24 Enquiries

WHY POLYU

- Providing application-oriented education since 1937
- Collaborating with over 280 institutions
- Offering over 160 taught programmes
- Working on over 2,750 research projects

International Rankings

#02

QS World University Rankings: Sustainability 2023 (Hong Kong)

#05

Times Higher Education (THE) World University Rankings 2024 (Hong Kong)

#06

QS Top 50 under 50 (for universities under 50 years old) 2021 (Global)

#14

Times Higher Education (THE) Asia University Rankings 2023 (Global)

WHY POLYU BUSINESS SCHOOL

- A comprehensive portfolio of academic programmes
- Over 170 world-class scholars including specialists in accounting, finance, logistics, management, marketing, and transport
- Research and specialist centres facilitate single and multidisciplinary studies
- International context and culturally diverse environment
- Network of 54,000 alumni

Accreditations



International Rankings

#01

Clarivate Web of Science 2019-2021: Shipping Research

#01

ShanghaiRanking Global Ranking of Academic Subjects (GRAS) 2023: Management

#04

Research.com Best Business & Management Universities 2023

#45

Times Higher Education (THE) World University Rankings 2024: Business & Economics

#52

UTD (University of Texas at Dallas) Top 100 Worldwide Business School Rankings based on Research Contributions 2018-2022

#56

QS World University Rankings 2023: Business & Management Studies



DEAN'S MESSAGE

Welcome to the Faculty of Business of PolyU.

Faculty of Business, popularly known as PolyU Business School (PBS), is a world-class business school that offers high-quality academic programmes and leads cutting-edge research in business and related disciplines. We are proud to have achieved accreditations from AACSB International (The Association to Advance Collegiate Schools of Business) and EQUIS (EFMD Quality Improvement System).

Dedicated to the pursuit of *Innovation-driven Education and Scholarship (IDEAS)*, PBS engages stakeholders to deliver societal impact in a sustainable way, with a focus on Hong Kong and the Greater Bay Area. Through our educational programmes, partnerships, and close links with industry and the professional community, we strive to transfer knowledge and technology to the wider community.

Our comprehensive portfolio of undergraduate and postgraduate programmes, many of which are recognised by professional bodies, cover key areas such as accounting, ESG, finance, logistics, management, marketing, shipping, and transport. In addition to the BBA, MBA, DBA/DMgt, DFinTech, and specialised master's degrees, our research programmes also lead to the MPhil and PhD awards.

To maintain currency of our academic programmes and specialist consultancy, our faculty members undertake pioneering and impactful research, both within and across their disciplines, facilitated by our Case Consortium and centres for branding and marketing, digital transformation, financial technology, leadership and innovation, maritime studies, shipping and logistics, and sustainability and entrepreneurial finance. Our research has been ranked 52nd in the world (*The UTD Top 100 Worldwide Business School Rankings based on Research Contributions 2018-2022*).

We welcome you to join our community of over 170 world-class scholars from around the world, 4,900 students, and 54,000 alumni.

Ir Prof. T.C. Edwin Cheng

IASCYS Academician, FHKEng, ScD, PhD

Dean, Faculty of Business

Fung Yiu King – Wing Hang Bank Professor in Business Administration

Chair Professor of Management



PROGRAMME DIRECTOR'S MESSAGE



I am pleased to introduce you to the Doctor of Business Administration (DBA) programme offered by The Hong Kong Polytechnic University (PolyU) - the first local university to initiate this professional cum academic programme at the highest level of business education.

Today's global pandemic, geo-political tension, digital transformation, and increasingly sophisticated business environment impose immense challenges to strategic decision making. With the goal to produce "scholar-leaders", our DBA programme enhances senior executives or business leaders with their technical competency and connects their rich business experience under a unified, cross-disciplinary analytical framework. This is attained with our world-class education in a dynamic learning environment, where innovative ideas and unforeseeable concepts would be generated with clarity in this profound programme.

PolyU DBA programme distinguishes itself as taking an interdisciplinary and rigorous approach. It draws on diverse faculties from various disciplines within the University. We bring to the classroom our best professors who publish prolifically in high quality international journals.

An important aspect of the PolyU DBA is that we emphasize the richness and depth of international perspective in the programme. Partnerships have been made with such world renowned business schools as the IMD (International Institute for Management Development) and LSE (The London School of Economics and Political Science) so that our DBA students have the opportunity to go there to study in their famous leadership programme or Executive Education Courses.

We have the longest DBA programme history of nurturing top executives in multi-national corporations, private enterprises and state-owned enterprises in Asia and we welcome you to be one of our incredible cohorts of this non-fungible academic experience.

Prof. Li Jiang
DBA Programme Director
Professor of Practice (Finance)
School of Accounting and Finance



WHY **POLYU DBA**

- Earn a professional doctorate
- Transform your knowledge and experience into a practice-based academic framework
- Trust our experience: the PolyU DBA has been running for 27 years. The first professional doctorate in business administration launched in Hong Kong, it has the largest DBA alumni community in Hong Kong, and on the Chinese mainland.
- Choose your preferred study mode: two-year full-time or three-year part-time
- Gain an understanding of the impacts of digital technology and develop an appreciation of digital transformation to strengthen leadership and performance



INTERNATIONAL COLLABORATIONS

To enhance the international dimension and academic vigour of PolyU DBA, collaborations have been established with IMD business school in Switzerland and The London School of Economics and Political Science (LSE) in London, U.K.



IMD is ranked among top 3 for executive education in the world for ten years in a row (2012-2022) by the Financial Times.



Executive
Education Courses

LSE has been ranked top in Europe, and second in the world, in social science and management subjects for the ninth consecutive year in the QS World University Rankings by Subject 2021.

CLASS PROFILE (Data from DBA programme taught in English)

Average work experience **15 years**

Gender **70%**
Male

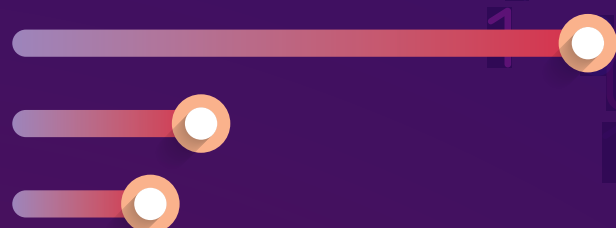
30%
Female

Nationality

59%
Local

41%
Non-local

Education background

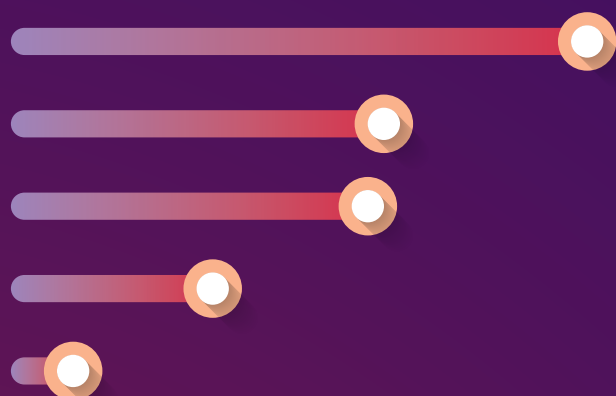


64% *EMBA/MBA/Specialised Master*

21% *More than 1 EMBA/MBA/Specialised Masters*

15% *Others*

Job post



36% *Director*

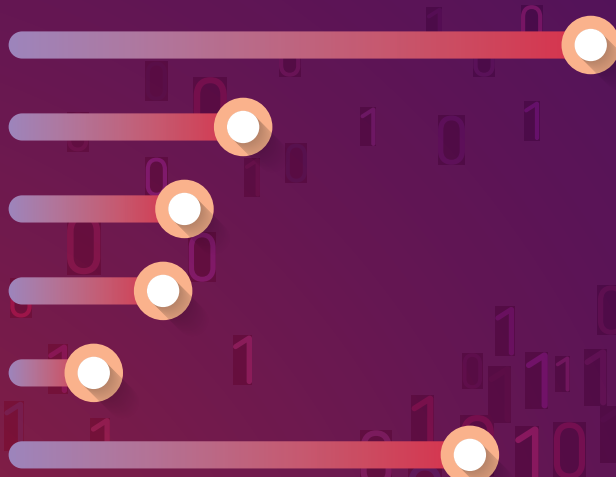
24% *Senior Management*

23% *Chairman/CEO/President*

13% *General Manager*

4% *CFO/Financial Controller*

Industry



34% *Banking/Finance/Insurance/Accounting & Audit*

14% *IT/Telecom*

11% *Manufacturing*

9% *Building/Property/Construction*

5% *Advertising/Marketing Services*

27% *Others*



PROGRAMME DETAILS

Objectives

This programme aims to educate senior executives to be the “scholar-leaders”, who are able to apply research findings in solving the real-world management problems. It has been designed to integrate academic study and management practice in a way which will form a significant part of an individual’s business career.

On completion of the programme, students will be able to advance their knowledge, skills and intellectual abilities as defined in the broad learning outcomes which are underpinned by specific learning objectives below:

i. General Business Knowledge

Learning Objective: Broaden, update, and deepen students’ knowledge of business administration in general with an appreciation of digital transformation in the business world

ii. Specialist Knowledge

Learning Objective: Acquire an in-depth knowledge of a specialist area including some basic understanding of the impacts from digital technology

iii. Applied Research

Learning Objective: Sharpen students’ ability to conduct original applied research and ethical awareness in business administration

Mode and Duration

PolyU DBA is a mixed-mode programme. Students may pursue their DBA studies with either a full-time study load (taking 9 credits or more in a semester) or a part-time study load (less than 9 credits in a semester).

Students are required to complete 51 credits including 8 taught subjects (a total of 24 credits), 2 DBA Residentials (1 credit for Residential 1 and 2 credits for Residential 2) and a DBA Thesis (8 credits for Thesis I (thesis proposal presentation) and 16 credits for Thesis II).

The normal duration for DBA full-time study option is 2 years and 3 years for DBA part-time study option. Students who wish to extend their studies beyond normal duration should submit an application to the Faculty of Business for consideration.

There is a possible exit award of Master of Science in Management Research Studies for students who have completed the 8 taught subjects, 2 DBA Residentials, and passed DBA Thesis I (a total of 35 credits).

Medium of Instruction

Chinese supplemented with English

Content

Students are required to complete 51 credits including:

- 24 credits of Coursework: 1 compulsory, 2 core and 5 elective subjects (3 credits each)
- 3 credits of Residentials: Residential 1 (1 credit) and Residential 2 (2 credits)
- 24 credits of Thesis: Thesis I (8 credits) and Thesis II (16 credits)

All taught subjects (3 credits each) are at an advanced level and students are assumed to have prior knowledge of each subject area. The normal duration for the DBA Thesis is 12 months for DBA full-time study option and 18 months for DBA part-time study option. The 2 DBA Residentials are offered when the programme commences and the DBA Thesis phase starts respectively.

The curriculum includes technological contents such as data analytics tools, digital technology and the business world, the impact of technology and AI on leadership, and qualitative and experimental designs in relation to AI and entrepreneurship research.

Coursework (24 credits)

Compulsory Subject provides students with a solid foundation in research skills.

- Business Research Analysis and Design

Core Subjects provide students with an in-depth evaluation of qualitative and quantitative research approaches and methods as well as statistical applications. Students are required to complete any two of the following:

- Econometrics Methods
- Qualitative Research and Experimental Design
- Statistical Analysis for Management Research

Elective Subjects allow students to pursue particular areas of interest. There is generally more emphasis on academic readings to prepare students for the DBA Thesis. Students are required to complete any five of the following:

- Advanced Business Strategy
- Advanced Financial Management
- Advanced Topics in Economics for Managers
- Contemporary Issues in Financial Reporting and Corporate Disclosures
- Current Issues in Organizational Behaviour
- Frontier of Leadership Research
- Incentives and Monitoring in Accounting
- Independent Studies in Business
- Independent Studies in Business – International Collaborations Experience



At IMD in Switzerland

Orchestrating Winning Performance (OWP) at IMD is a 5-day programme on latest management thinking. Students find practical innovative solutions to complex business challenges and 'globalize' their contact files with senior executives from every continent.

LSE Executive Education offers intensive courses taught by the LSE faculty and augmented by practitioners from industry and business. Please visit PolyU DBA website (www.polyu.edu.hk/fb/dba_cn/) for latest information.

- Services Marketing Management
- Strategic Management of Information & Organization in Digital Economy
- Strategic Marketing
- Strategic Quality Management
- Strategic Supply Chain and Logistics Management

Remarks:

1. Normally, each subject will be offered once during the 2-year or 3-year study. However, subject to factors such as staff availability, student enrolment, programme resources and so on, not all subjects will be offered during the 2-year or 3-year study. And, registration is subject to the availability of quota.
2. Programme structure and subject details (e.g. subject description form, offering pattern, class timetable etc.) are subject to review and change from time to time.

Residentials (3 credits)

There are 2 Residentials which are compulsory to all students:



DBA Residential 1 is a mandatory orientation workshop scheduled for the beginning of the programme in August / September.

*DBA (English) Residential 1, 2023 in Bangkok:
Students and Professors*

DBA Residential 2 is a research workshop held normally after students have completed all the required subjects. The main purpose of this workshop is to give students an opportunity to present their thesis proposals and to prepare them for writing the theses.

*DBA (English) Residential 2, 2023 in Hong Kong:
Students and Professors*



DBA Thesis (24 credits)

The DBA Thesis comprises two parts: **DBA Thesis I** and **DBA Thesis II**. Students must pass the compulsory subject, 2 core subjects and at least 3 elective subjects before beginning their theses. They integrate and apply what they have learned to critically and rigorously examine topics of interest in the field of business or management. They are challenged to make an important contribution and/or provide innovative insights into the practice of management.

ADMISSION

Entrance Requirements

- A Master's degree, preferably in a business-related area; and
- Substantial managerial experience (at least 8 years) at a senior level.
- Candidates in senior management positions possessing a recognized first degree and membership of a recognized professional body may also be considered on a case-by-case basis.

If the applicants are not a native speaker of English, and do not possess a Bachelor's or Master's degree or equivalent qualification which is awarded by institutions where the medium of instruction is English, they are expected to fulfil the University's minimum English language requirement. Please refer to the "Admission Requirements" section for Taught Postgraduate Programmes at Study@PolyU for details.

Candidates are required to submit the following documents at the time of application:

- A personal statement
- Proof of employment (at least 8 years)
- Your academic qualifications (such as graduation certificates, transcripts of studies, etc.) that are not in English should be accompanied by an official certified English-translation

Provision of additional documents may be required if deemed necessary.

An incomplete application cannot be processed promptly and will reduce your chance of admission. Please complete all relevant fields on the application form and enclose all necessary documents.

Shortlisted candidates will be invited for interviews.



Fees and Payment Schedule

Fee for the entire programme for 2024/25 intake: HK\$1,504,500 (51 credits)

Fee for 8 taught subjects	HK\$708,000 (24 credits)
Fee for DBA Thesis I and II	HK\$708,000 (24 credits)
Fee for 2 DBA Residentials	HK\$88,500 (1 credit for DBA Residential 1 and 2 credits for DBA Residential 2)

Initial Payment

Fees for 1 taught subject (HK\$88,500) and DBA Residential 1 (HK\$29,500) are payable upon acceptance of offer.

Interim Payments

Fees for the remaining taught subjects are payable on a credit basis (HK\$29,500 per credit). Amount payable depends on the number of subjects taken in that semester.

Fees for the 8-credit DBA Thesis I (HK\$236,000) and DBA Residential 2 (HK\$59,000) are payable upon the registration for DBA Thesis I.

Final Payment

Fee for the 16-credit DBA Thesis II (HK\$472,000) is payable upon registration for DBA Thesis II.

Enquiries

For academic matters

Dr Katherine Feng
Deputy Programme Director
📞 (852) 2766 7127
✉️ katherine.feng@polyu.edu.hk

For other information

📞 (852) 3400 3234 / (852) 3400 2584
📞 (852) 2365 7415
✉️ fbdbace@polyu.edu.hk
🌐 www.polyu.edu.hk/fb/dba_cn

Online application:
www.polyu.edu.hk/admission



本出版物的最后更新日期为 2024 年 2 月。
The content of this publication is updated until February 2024.