



THE HONG KONG
POLYTECHNIC UNIVERSITY
香港理工大學



PolyU 理大商學院
Business School
Innovation-driven Education and Scholarship

Department of
LOGISTICS
& MARITIME
STUDIES
物流及航運學系

BBA (Hons) Scheme in Aviation, Maritime and Supply Chain Management

航空、航運及供應鏈管理

(榮譽) 工商管理學士學位組合課程

3 Majors under the Scheme Programme



PolyU 理大商學院
Business School
Innovation-driven Education and Scholarship

Department of
LOGISTICS
& MARITIME
STUDIES
物流及航運學系



Students admitted will complete a common Year One curriculum.



After completing Year One, they will choose one of the following awards with specialization for graduation



BBA (Hons) in Supply Chain Management and Analytics

供應鏈管理及分析(榮譽)工商管理學士



BBA (Hons) in International Shipping and Transport Logistics

國際航運及物流管理(榮譽)工商管理學士



BBA (Hons) in Aviation Management and Finance

航空管理及金融 (榮譽) 工商管理學士學位

Selection of Major



Students will be asked to rank their choices of Major programme (from the most preferred one to the least) during semester 2 of their Year One study.

Selection Criteria:

- **Students' preference**
- **Overall GPA of Year One study**

Maximum Number of Students to be Admitted into a Major :
Capped at 40% of the total number of students in that year

Programme Information



PolyU 理大商學院
Business School
Innovation-driven Education and Scholarship

Department of
LOGISTICS
& MARITIME
STUDIES
物流及航運學系

JUPAS code	JS3070
Programme code	44493
Mode of Study	4-year full-time
Intake quota	60
No. of Credits towards Graduation	120 academic credits + 3 Work-Integrated Education (WIE) training credits

BBA Core Subjects



PolyU 理大商學院
Business School
Innovation-driven Education and Scholarship

Department of
LOGISTICS
& MARITIME
STUDIES
物流及航運學系

- Business Finance
- Corporate Social Responsibility
- Financial Accounting
- Global Economic Environment
- Business Analytics
- Business Law
- Introduction to Economics
- Introduction to Marketing
- Management Accounting 1
- Introduction to Psychology
- Introduction to Statistics for Business
- Business Information Systems
- Management & Organisation
- Principles of Operations Management
- Strategic Management
- Tango! Managing Self & Leading Others
- Chinese Language Communication for Business
- Workplace English for Business Students I
- Workplace English for Business Students II

Admission Requirements



University's Minimum Entrance Requirements



PolyU 理大商學院
Business School
Innovation-driven Education and Scholarship

Department of
LOGISTICS
& MARITIME
STUDIES
物流及航運學系

For local students with HKDSE results

FT UGC-funded 4-year Ug degree programmes

HKDSE SUBJECTS	CORE SUBJECTS				ELECTIVE SUBJECTS	
	Chinese Language	English Language*	Mathematics*	Liberal Studies	1 st Elective	2 nd Elective or M1/M2
Level	3	3	2	2	3	3

- There is no compulsory subject requirement.
- ***English Language** and **Mathematics** are given the highest weighting in the calculation of admission score.

Admission Score Calculation



PolyU 理大商學院
Business School
Innovation-driven Education and Scholarship

Department of
LOGISTICS
& MARITIME
STUDIES
物流及航運學系

- Any Best 5 subjects
 - The “**Best**” **5 HKDSE subject** (after subject weightings have been applied) will be taken into account.
- Average HKDSE Scores of Admittees
 - **2021/22: 19.7** (Any Best 5 Subjects)

Interview Arrangement



PolyU 理大商學院
Business School
Innovation-driven Education and Scholarship

Department of
LOGISTICS
& MARITIME
STUDIES
物流及航運學系

- Selected **Band A** candidates may be invited for an interview in **July or August** (after re-prioritization of JUPAS choice)



Study Options



PolyU 理大商學院
Business School
Innovation-driven Education and Scholarship

Department of
LOGISTICS
& MARITIME
STUDIES
物流及航運學系



Major only



Major / Minor *(Any minor programme offered by PolyU)*



Major plus

Secondary Major in Artificial Intelligence and Data Analytics (AIDA)



Major/ Minor plus

Secondary Major in Artificial Intelligence and Data Analytics (AIDA)

Study Options



PolyU 理大商學院
Business School
Innovation-driven Education and Scholarship

Department of
LOGISTICS
& MARITIME
STUDIES
物流及航運學系

	MAJOR	MAJOR plus SECONDARY MAJOR in AIDA	MAJOR / MINOR	MAJOR / MINOR plus SECONDARY MAJOR in AIDA
Duration	4 years			
Minimum Credit Requirements	At least 120 credits + 3 training credits	At least 132 credits + 3 training credits	At least 123 credits + 3 training credits	At least 144 credits + 3 training credits
Curriculum Structure	1. General University Requirements (30 credits) 2. Work-Integrated Education (3 training credits)			
	3. Discipline-Specific Requirements (90 credits) ^(a)	3. Discipline-Specific Requirements (At least 87 credits) ^(a) 4. Secondary Major Requirements (36 credits) ^(c)	3. Discipline-Specific Requirements (90 credits) ^(a) 4. Minor Requirements (18 credits) ^(b)	3. Discipline-Specific Requirements (At least 87 credits) ^(a) 4. Minor Requirements (18 credits) ^(b) 5. Secondary Major Requirements (36 credits) ^(c)
When to apply?	Year 1	Year 1	Major: Year 1 Minor: At the beginning of Year 2	Major, Secondary Major: Year 1 Minor: At the beginning of Year 2
Criteria	Quotas of individual Majors, GPA, individual subject results	Cumulative GPA of 2.70 or above, other selection criteria may apply	Cumulative GPA of 2.50 or above, other selection criteria may apply	Secondary Major: Cumulative GPA of 2.70 or above, other selection criteria may apply Minor: Cumulative GPA of 2.50 or above, other selection criteria may apply

^(a) 9 credits of General University Requirements (GUR) subjects can be fulfilled by Discipline-Specific Requirements (DSR) subjects

^(b) Subject to approval by the Minor-offering Department, students may count up to 6 credits of their Major/GUR subjects towards their chosen Minor.

^(c) Students may count up to 12 credits of their Major/GUR subjects towards the Secondary Major.



THE HONG KONG
POLYTECHNIC UNIVERSITY
香港理工大學



PolyU理大商學院
Business School
Innovation-driven Education and Scholarship

Department of
LOGISTICS
& MARITIME
STUDIES
物流及航運學系

BBA (Hons) in Aviation Management and Finance

航空管理及金融(榮譽)工商管理學士學位

**formerly known as BBA (Hons) in Aviation Management and Logistics*

航空管理及物流(榮譽)工商管理學士學位



BBA-AMF Specialist Subjects



PolyU 理大商學院
Business School
Innovation-driven Education and Scholarship

Department of
LOGISTICS
& MARITIME
STUDIES
物流及航運學系

- Introduction to Aviation Management
- Aviation Finance
- Airport Management
- Airline Strategy and Management
- Air Transport Logistics
- Aviation Safety and Security Management
- **AMF Capstone Project**

BBA-AMF Specialist Electives



PolyU 理大商學院
Business School
Innovation-driven Education and Scholarship

Department of
LOGISTICS
& MARITIME
STUDIES
物流及航運學系

Logistics and Maritime Studies (LMS)



- Air Flight Operations Management
- Airline Operations and Revenue Management
- Study Tour in AMF
- Quality Management
- Information Systems for Logistics Management
- Introduction to Space Commerce (*subject to approval*)
- Creativity, Innovation and Entrepreneurship (*subject to approval*)

Industrial and Systems Engineering (ISE)



- Aircraft Service Engineering and Logistics
- Data Management in Aviation Industries
- Green Legislation and Supply Chain Logistics
- Mobile Technologies for Logistics Systems

School of Hotel and Tourism Management (SHTM)



- In-flight Service Management
- Environmental Management for the Travel and Hospitality Industry

Programme Recognition *(subject to assessment)*



PolyU 理大商學院
Business School
Innovation-driven Education and Scholarship

Department of
LOGISTICS
& MARITIME
STUDIES
物流及航運學系

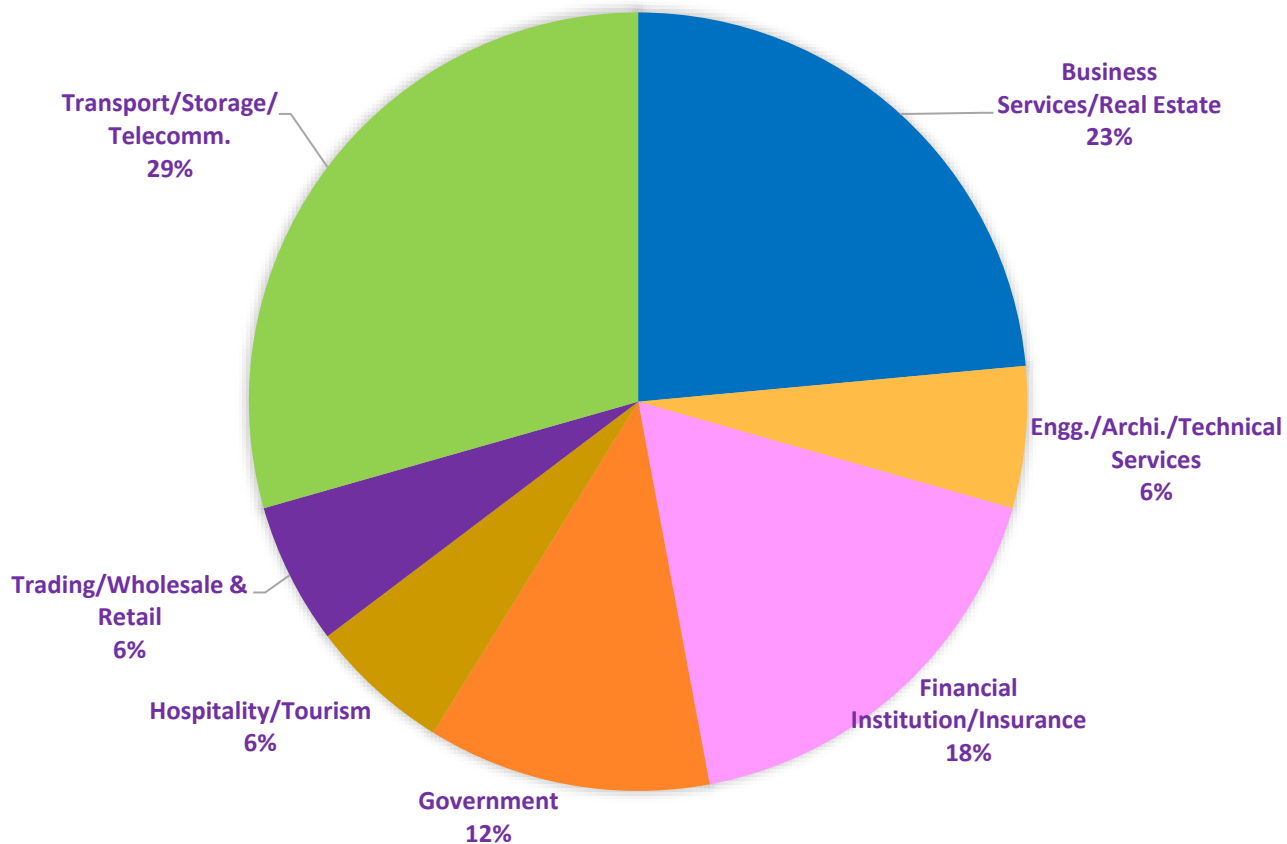
- Graduates are expected to be granted full exemption from the Professional Qualifying Examination (PQE) of **The Chartered Institute of Logistics and Transport in Hong Kong (CILTHK)**.

BBA-AML 2020 Graduates' Employment Sectors



PolyU 理大商學院
Business School
Innovation-driven Education and Scholarship

Department of
LOGISTICS
& MARITIME
STUDIES
物流及航運學系



BBA (Hons) in International Shipping and Transport Logistics

國際航運及物流管理(榮譽) 工商管理學士學位



BBA-ISTL Specialist Subjects



PolyU 理大商學院
Business School
Innovation-driven Education and Scholarship

Department of
LOGISTICS
& MARITIME
STUDIES
物流及航運學系



**Introduction to
Shipping & Transport
Logistics Operations**



Shipping Logistics



Carriage of Goods Law



**Insurance in Shipping
and Transport
Logistics**



**Liner Shipping
Management**



**Shipbroking and
Chartering
Management**



**ISTL Capstone
Project**

BBA-ISTL Specialist Electives



PolyU 理大商學院
Business School
Innovation-driven Education and Scholarship

Department of
LOGISTICS
& MARITIME
STUDIES
物流及航運學系

Logistics and Supply Chain Management

- Logistics and Distribution Management
- Intermodalism
- Supply Chain Management
- Information Systems for Logistics Management
- Economics of International Transport Logistics
- Quality Management
- Research Methods
- Introduction to Enterprise Resource Planning System
- E-Commerce and Logistics
- Creativity, Innovation and Entrepreneurship *(subject to approval)*

Seafaring, Ship Masters, Harbour Pilots

- General Ship Management
- Navigation and Communication Systems
- Cargo Operations and Management
- Marine Navigation and Meteorology
- Stability, Stress and Loadlines
- International Trade and Shipping
- Advanced Navigation and Ship Handling
- International Study Tour in Shipping & Logistics

High-end Maritime Services

- Maritime Law
- Management of Maritime Organizations
- Port Planning and Management
- Shipping Finance

Aviation

- Air Transport Logistics
- Airport Management
- Introduction to Space Commerce *(subject to approval)*

Programme Recognition



PolyU 理大商學院
Business School
Innovation-driven Education and Scholarship

Department of
LOGISTICS
& MARITIME
STUDIES
物流及航運學系

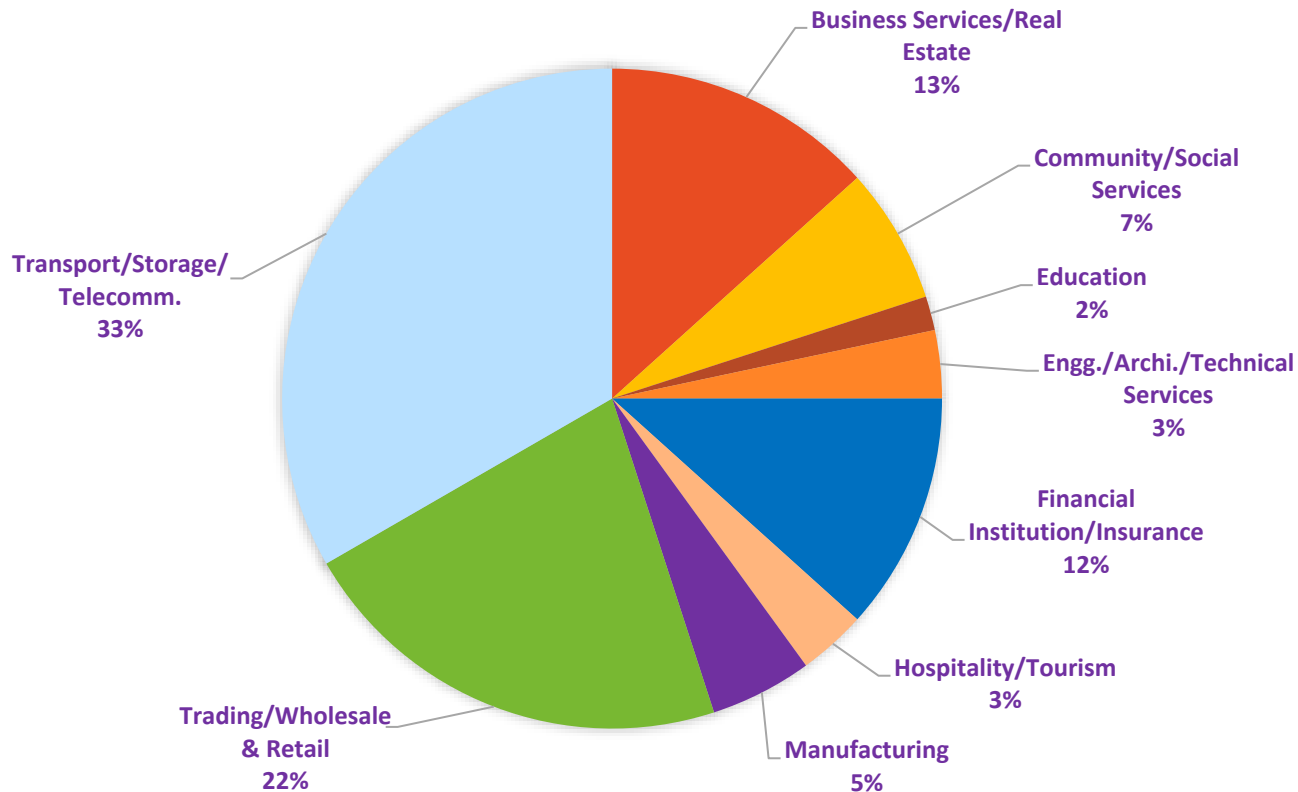
- Graduates are granted full exemption from the Professional Qualifying Examination (PQE) (Logistics Stream) of **The Chartered Institute of Logistics and Transport in Hong Kong (CILTHK)**.
- Graduates are also granted partial exemption from the qualifying examinations of the following professional bodies:
 - **The Institute of Chartered Shipbrokers (ICS)**
 - **Marine Department, The Government of the HKSAR** – remission of sea services for the purpose of attempting the Class 3 Certificate of Competency (Deck Officer) examination.
- Graduates are also qualified to register as Associate Member of **The Institute of Purchasing & Supply of Hong Kong (IPSHK)**.

BBA-ISTL 2020 Graduates' Employment Sectors*



PolyU 理大商學院
Business School
Innovation-driven Education and Scholarship

Department of
LOGISTICS
& MARITIME
STUDIES
物流及航運學系





THE HONG KONG
POLYTECHNIC UNIVERSITY
香港理工大學



PolyU 理大商學院
Business School
Innovation-driven Education and Scholarship

Department of
LOGISTICS
& MARITIME
STUDIES
物流及航運學系

BBA (Hons) in Supply Chain Management and Analytics

供應鏈管理及分析 (榮譽) 工商管理學士學位

(formerly known as BBA (Hons) in Global Supply Chain Management)

全球供應鏈管理(榮譽)工商管理學士學位



BBA-SCMA Specialist Subjects

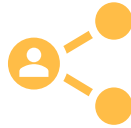


PolyU 理大商學院
Business School
Innovation-driven Education and Scholarship

Department of
LOGISTICS
& MARITIME
STUDIES
物流及航運學系



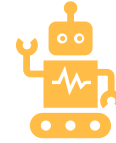
**Digital
Procurement
Management**



**Logistics Technologies
and Distribution
Management**



**Management
Science**



**Managing
Innovation and
Technology**



**Supply Chain
Analytics**



**Strategies and Technologies
in Warehousing
Management**



**SCMA Capstone
Project**

SCMA Specialist Electives



PolyU 理大商學院
Business School
Innovation-driven Education and Scholarship

Department of
LOGISTICS
& MARITIME
STUDIES
物流及航運學系



Technologies and Analytics

Research Methods
Intermediate Business Statistics
Quality Management
Introduction to Enterprise Resource Planning System
Introduction to Coding for Business with Python
Information Systems for Logistics Management
Practice of Management Decision Analysis
Simulation for Operations & Information Management
E-commerce and Logistics
Creativity, Innovation and Entrepreneurship
(*subject to approval*)



Supply Chain Management

Quality Management
Study Tour and Visits in SCMA
Project Management
Operations Strategy
International Operations Management
Service Operations Management
Supplier Development and Contract Management



International Shipping and Aviation Logistics

Introduction to Shipping & Transport
Logistics Operations
Intermodalism
Air Transport Logistics
Shipping Logistics
Carriage of Goods Law
Airport Management
Airline Strategy and Management
Introduction to Space Commerce (*subject to approval*)

Programme Recognition *(subject to assessment)*



PolyU 理大商學院
Business School
Innovation-driven Education and Scholarship

Department of
LOGISTICS
& MARITIME
STUDIES
物流及航運學系

- Graduates are granted full exemption from the Professional Qualifying Examination (PQE) (Logistics Stream) of **The Chartered Institute of Logistics and Transport in Hong Kong (CILTHK)**.
- Graduates with passes in required subjects may satisfy the partial educational requirements for membership of **The International Institute of Management (IIM)**.
- Graduates are also granted partial exemption from the qualifying examinations of **The Chartered Institute of Procurement and Supply (CIPS)**.
- Graduates are also qualified to register as Associate Member of **The Institute of Purchasing & Supply of Hong Kong (IPSHK)**.

Very good employment prospects among industries in:

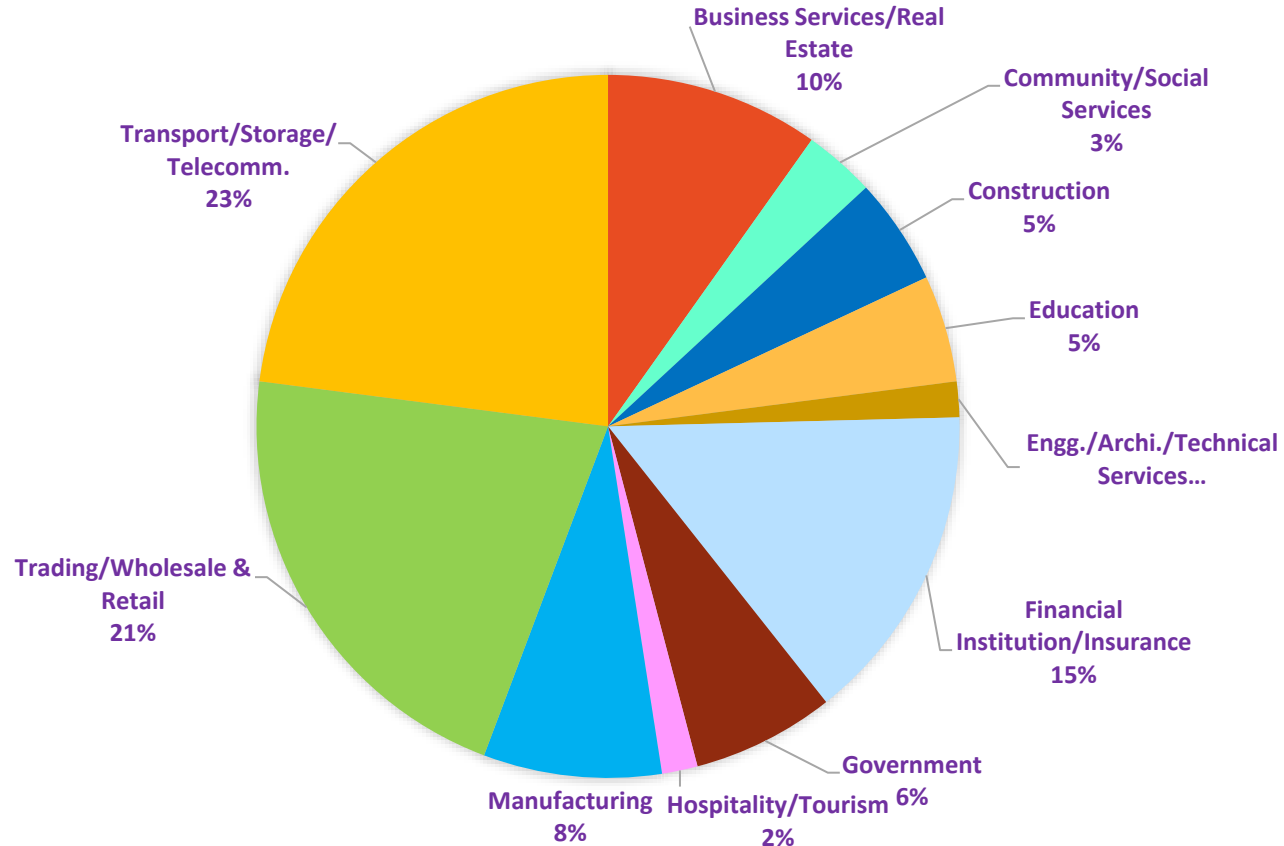
- Shipping & transport
- Warehousing
- Manufacturing
- Purchasing & supply
- Trading companies
- Merchandising & retailing

BBA-GSCM 2020 Graduates' Employment Sectors*



PolyU 理大商學院
Business School
Innovation-driven Education and Scholarship

Department of
LOGISTICS
& MARITIME
STUDIES
物流及航運學系





THE HONG KONG
POLYTECHNIC UNIVERSITY
香港理工大學



PolyU 理大商學院
Business School
Innovation-driven Education and Scholarship

Department of
LOGISTICS
& MARITIME
STUDIES
物流及航運學系

Outside the Classrooms

Opening Minds • Shaping the Future
啟迪思維 • 成就未來

Study + Tour !!!



PolyU 理大商學院
Business School
Innovation-driven Education and Scholarship

Department of
LOGISTICS
& MARITIME
STUDIES
物流及航運學系

Copenhagen, Denmark





Amsterdam + Rotterdam, The Netherlands



Oslo, Norway

Industrial Visits and Speakers



PolyU 理大商學院
Business School
Innovation-driven Education and Scholarship

Department of
LOGISTICS
& MARITIME
STUDIES
物流及航運學系

- Airport Authority (AA)
- Damco Hong Kong Limited
- Modern Terminals Limited
- Hong Kong Association of Freight Forwarding and Logistics Ltd. (HAFFA)
- Hong Kong Article Numbering Association (HKANA)
- The Chartered Institute of Logistics and Transport in Hong Kong (CILTHK)



Student Exchange Programme



PolyU 理大商學院
Business School
Innovation-driven Education and Scholarship

Department of
LOGISTICS
& MARITIME
STUDIES
物流及航運學系

Students can apply for outbound exchange programme for one semester

- Australian Maritime College, **Australia**
- Audencia Nantes School of Management, **France**
- Arizona State University, **USA**
- Ewha Womans University, **Korea**
- Copenhagen Business School, **Denmark**
- Kingston University, **UK**
- Rikkyo University, **Japan**
- University of Huddersfield, **UK**
- University of Calgary, **Canada**
- University of Mannheim, **Germany**
- And many other top institutions in PRC, Asia, Europe and America





- LMS Facebook: <https://fb.me/PolyU.LMS>

- LMS Instagram: <https://www.instagram.com/PolyU.LMS>



Contact us



PolyU 理大商學院
Business School
Innovation-driven Education and Scholarship

Department of
LOGISTICS
& MARITIME
STUDIES
物流及航運學系

Department of
LOGISTICS
& **M**ARITIME
STUDIES
物流及航運學系

- 🏠 <http://www.lms.polyu.edu.hk>
- ✉ lms.enquiry@polyu.edu.hk
- ☎ 2766-4607