

FINANCE

財務概況

SOLID PROGRESS

The University had a good start financially in 2012/13, the first year of the University Grants Committee ("UGC") funding triennium 2012-15. The year not only marked a new era for local tertiary education, with the new four-year undergraduate curriculum being smoothly implemented in the University, but also the launch of the University's Strategic Plan 2012/13-2017/18 and a set of re-aligned investment strategies. The re-start of the Matching Grant Scheme, already into its 6th phase, by the government contributed to the increase of income in 2012/13.

The year ended with a healthy surplus and stronger balance sheet as at 30 June 2013. The University and the Consolidated Entity recorded a surplus of \$514.4 million (2012: \$154.4 million) and \$729.7 million (2012: \$280.5 million) respectively in 2012/13. Net assets of both the University and the Consolidated Entity had a positive growth of 15% and 18% to \$4,029.9 million (2012: \$3,515.5 million) and \$4,762.7 million (2012: \$4,029.4 million) respectively.

OPERATING RESULTS AND FINANCIAL POSITION

In 2013, the total income of the University rose by \$750.1 million to \$4,997.1 million (2012: \$4,246.0 million), an increase of 18% over the previous year. The key contributors to this growth in revenue were the \$448.2 million increase in Government Subventions and the \$117.5 million rise in Tuition and Other Fees, which were due to the implementation of the four-year academic structure and the double cohort of first year students, resulting in a record high UGC undergraduate student body of 13,000. An increase in Net Investment Gain by around \$100.0 million to \$132.0 million (2012: \$32.1 million) was the positive outcome after the implementation of the new investment strategies. With the launch of the Sixth

穩健發展

本校於2012/13財政年度財政穩健，奠定了大學教育資助委員會（「教資會」）2012-15三年撥款期首年的良好開端。隨著新四年制本科課程順利推行，本年度不僅是香港高等教育邁進新里程的重要時候，也是大學策略性發展計劃2012/13-2017/18和新投資策略執行的開端。政府重新啟動配對補助金計劃並已踏入第6期，促進了2012/13財政年度收入增長。

本校於年終時不單錄得充裕盈餘，也有穩健的財務狀況。本校與綜合體分別錄得盈餘5.144億港元(2012: 1.544億港元)及7.297億港元(2012: 2.805億港元)。本校與綜合體的淨資產增長率分別約為15%及18%，分別增長至40.299億港元(2012: 35.155億港元)及47.627億港元(2012: 40.294億港元)。

營運結果及財務狀況

2013年本校總收入增長了7.501億港元至49.971億港元(2012: 42.46億港元)，較去年同期上升18%。增幅主要來自政府額外撥款4.482億港元及學費和其他收費增長共1.175億港元，由於四年本科學制的開展與同年招收兩批新生的關係，今年教資會本科生創新紀錄，總人數多達13,000餘人。大學投資淨收益增長了近1億港元至1.32億港元(2012: 3,210萬港元)，是實施新投資策略的正面成果。受惠於第6期配對補助金計劃的推行，外界捐助增至2.201億港元(2012: 1.355億港元)。然而為了實施新本科學制，本校總開支較去年同期

Matching Grant Scheme, Donations and Benefactions in the year reached \$220.1 million (2012: \$135.5 million). The expenditure of the University increased by an overall rate of 10% to \$4,478.2 million (2012: \$4,088.2 million), mostly due to the implementation of the new academic structure. Following the completion of the Phase 8 Development Project (Block Z), a number of consequential works were carried out to suitably furnish the available space for our staff and students. Taking into consideration the associated renovation costs, as well as the cost incurred in the purchase of office/classroom furniture and equipment items, moving and facilities management, the Premises and Related Expenses amounted to \$906.6 million (2012: \$720.3 million), an increase of 26%.

The total operating income of subsidiaries was \$1,324.1 million (2012: \$1,181.9 million) and total operating expenditure was \$1,108.0 million (2012: \$1,108.8 million), achieving a surplus from operation of \$216.1 million (2012: \$73.1 million). The 12% increase in total operating income was mainly due to the increase in post-secondary education places offered by Hong Kong Community College ("HKCC") in response to market demand in this unique double cohort year and the continued business growth of Hotel ICON. The corresponding higher level of expenditure in these two subsidiaries was partly offset by the expenditure eliminated after the selling off of a number of subsidiaries in the previous year. Total expenditure of the subsidiaries, net of their donation of surpluses to the University, increased 5% in the year.

* The University and Consolidated Income and Expenditure Analyses are provided in Figures 1-4.
本校及綜合體之收入及開支分析詳情載於圖一至四。

上升10%，增至44.782億港元(2012: 40.882億港元)。隨著第8期校園發展計劃(教學樓Z座)的竣工，校園內展開了一系列相關工程以確保員工及學生有足夠及適合的使用空間。其中包括相應的裝修費用、購買辦公室/課室傢俬及設備費用、搬運費用與設施管理費，導致校舍及有關開支較去年同期上升26%，增長至9.066億港元(2012: 7.203億港元)。

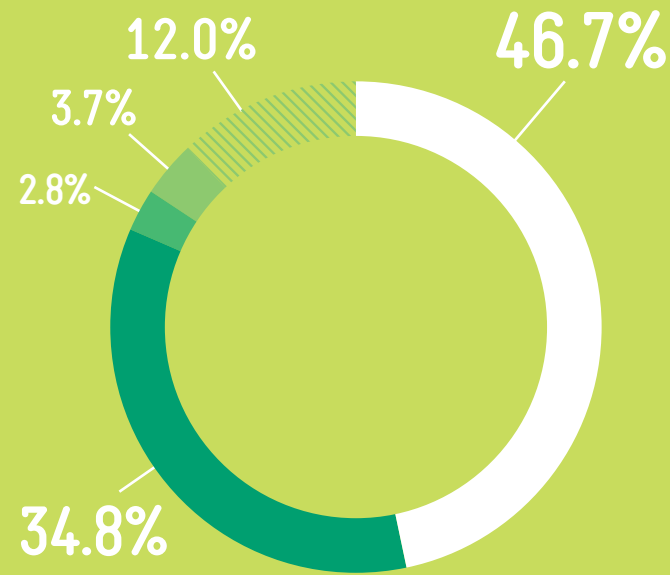
年內附屬公司的總營運收入為13.241億港元(2012: 11.819億港元)，總營運開支為11.08億港元(2012: 11.088億港元)，因而錄得營運盈餘2.161億港元(2012: 7,310萬港元)。本年度總營運收入較去年同期上升12%，主要由於雙班年帶動的市場需求造就了對香港專上學院專上教育學位的增長，以及「唯港薈」持續增長的業績。而支援香港專上學院與酒店營運而相應增加各項開支，跟去年度出售了部分附屬公司而減退的營運開支互相抵銷。除去附屬公司對本校的捐款，附屬公司於2013年度的開支實較去年同期上升5%。

INCOME ANALYSIS

收入分析

INCOME 收入	CONSOLIDATED 綜合				UNIVERSITY 大學			
	2013		2012		2013		2012	
	HK\$'m	%	HK\$'m	%	HK\$'m	%	HK\$'m	%
Government Subventions 政府撥款	2,794	46.7	2,343	46.7	2,787	55.8	2,339	55.1
Tuition and Other Fees 學費及其他收費	2,082	34.8	1,916	38.2	1,480	29.6	1,362	32.1
Net Investment Gain 投資淨收益	168	2.8	37	0.7	132	2.6	32	0.8
Donations and Benefactions 外界捐助	224	3.7	89	1.8	220	4.4	136	3.2
Other Income 其他收入	720	12.0	637	12.6	378	7.6	377	8.8
TOTAL 總數	5,988	100	5,022	100	4,997	100	4,246	100

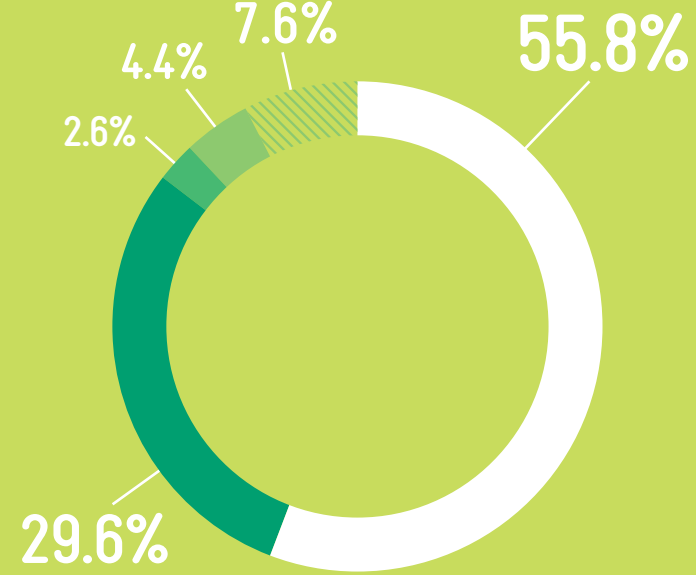
FIGURE 1 圖一
2012/13 CONSOLIDATED INCOME ANALYSIS
2012/13 年度綜合收入分析



KEY 圖例

Government Subventions 政府撥款
Tuition and Other Fees 學費及其他收費
Net Investment Gain 投資淨收益
Donations and Benefactions 外界捐助
Other Income 其他收入

FIGURE 2 圖二
2012/13 UNIVERSITY INCOME ANALYSIS
2012/13 年度大學收入分析

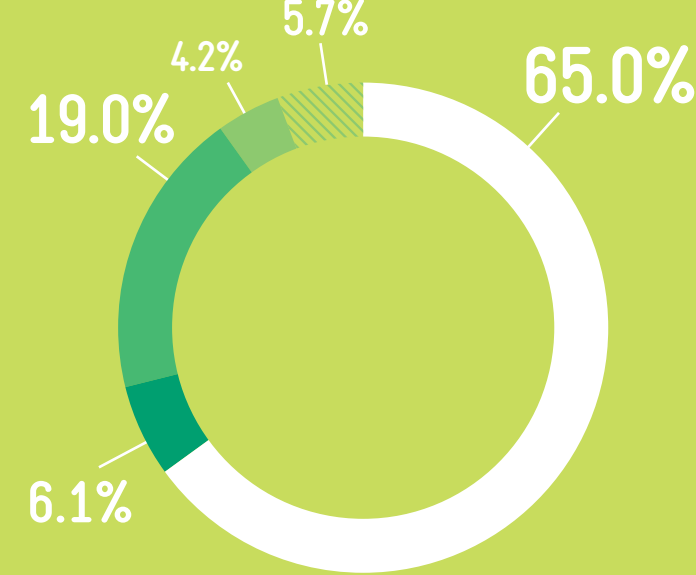


EXPENDITURE ANALYSIS

開支分析

EXPENDITURE 開支	CONSOLIDATED 綜合		UNIVERSITY 大學		CONSOLIDATED 綜合		UNIVERSITY 大學	
	2013		2012		2013		2012	
	HK\$'m	%	HK\$'m	%	HK\$'m	%	HK\$'m	%
Learning and Research 學習及科研								
Instruction and Research 教學及科研	2,839		2,693		2,605		2,483	
Library 圖書館	150		147		135		135	
Central Computing Facilities 中央電腦設施	155		131		137		118	
Other Academic Services 其他教學服務	262		241		222		201	
	3,406	65.0	3,212	67.4	3,099	69.4	2,937	72.1
Management and General 管理及一般項目	320	6.1	293	6.2	248	5.6	221	5.4
Premises and Related Expenses 校舍及有關開支	995	19.0	778	16.3	906	20.3	720	17.7
Student and General Educational Services 學生及一般教育服務	223	4.2	201	4.2	206	4.6	188	4.6
Other Activities 其他活動	299	5.7	281	5.9	5	0.1	10	0.2
TOTAL EXPENDITURE EXCLUDING FINANCE COSTS AND INCOME TAX 財務費用及所得稅以外開支	5,243	100	4,765	100	4,464	100	4,076	100

FIGURE 3 圖三
2012/13 CONSOLIDATED EXPENDITURE ANALYSIS
2012/13 年度綜合開支分析



KEY 圖例

Learning and Research 學習及科研
Management and General 管理及一般項目
Premises and Related Expenses 校舍及有關開支
Student and General Educational Services 學生及一般教育服務
Other Activities 其他活動

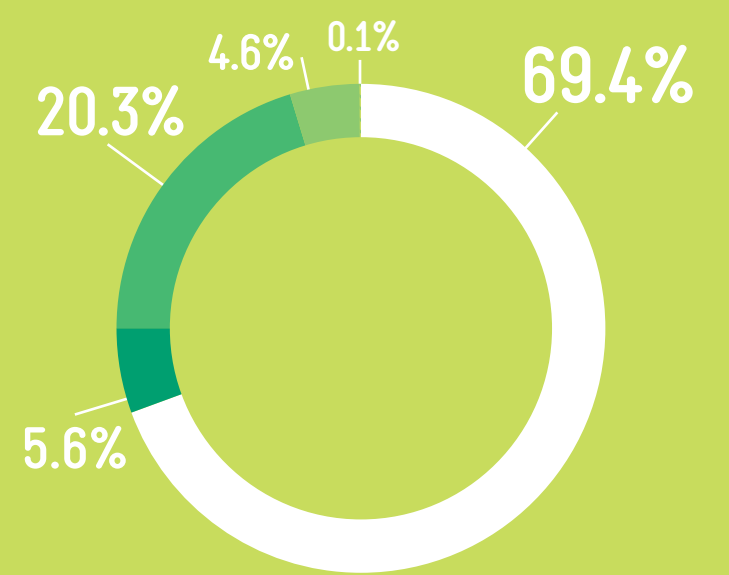
RESEARCH

In 2013, the total number of on-going research projects was 2,679 (2012: 2,457), out of which 645 (2012: 592) were new projects. The total number of candidates registered for research degrees was 1,495 (2012: 1,504).

In addition to the UGC's recurrent grants supporting general research activities, the University also secured funding from different sources to support other specific research projects. Total grants of \$91.4 million (2012: \$107.0 million) were received from UGC and its Research Grants Council. Another \$188.1 million (2012: \$185.4 million) of research funds came from contract research, sponsorships or donations. Total expenditure on research projects and studentship for the year, irrespective of funding sources, was \$423.0 million (2012: \$436.9 million).

The University has a robust research ethos, with researchers undertaking projects at internationally recognized levels. We have strong focus on application-oriented research and a good track record of developing innovations for industries. During the year, the University teamed up with The Boeing Company of USA to establish Hong Kong's first Aviation Services Research Centre, for which Government funding and sponsorship from other industrial partners will be solicited to support its activities.

FIGURE 4 圖四
2012/13 UNIVERSITY EXPENDITURE ANALYSIS
2012/13 年度大學開支分析



科技研究

於2013年進行中的科研項目共計2,679項(2012: 2,457), 其中有645項(2012: 592)為新項目。而註冊研究生的總人數為1,495名(2012: 1,504)。

除教資會用於資助一般科研活動的經常性撥款外, 本校也循其他途徑募集資金用於支持特定的科研項目。本校從教資會及其研究資助局收到的撥款為9,140萬港元(2012: 1.07億港元)。另外由其他來源如合約研究、贊助與捐贈所得之研究基金共計1.881億港元(2012: 1.854億港元)。從所有資金來源計算, 本年度用於研究項目與研究生助學金支出共計4.23億港元(2012: 4.369億港元)。

本校的研究風氣濃厚, 研究項目亦已達國際水平。由於本校著重應用為本的科研發展, 加上為工業界創新發明的驕人佳績, 本校於年度內和美國波音公司合作共建香港首間航空服務研究中心, 並將尋求政府及其他業界夥伴資助其運作。

INVESTMENTS

A new set of investment strategies was developed by the Investment Committee, based on the Statement of Investment Policies and Guidelines approved by Council. In essence, the strategy aligns investments with the cash flow requirements and long term development of the University, with the objective of matching assets and liabilities. Approximately 40% of the investible funds are invested by external investment managers selected by the Investment Committee.

As at 30 June 2013, the allocation of the University's investments was as follows: 78.8% (2012: 99.6%) in fixed income securities and 21.1% (2012: 0.3%) in equities. The University recorded a net investment gain of \$132.0 million (2012: \$32.1 million) for the year.

CAPITAL PROGRAMMES

For the year, a total of \$740.3 million (2012: \$1,156.6 million) was incurred in capital development programmes and various alterations, additions and improvement ("AA&I") projects. The Phase 8 Development Project (Block Z), which accounted for \$246.3 million (2012: \$507.0 million), was completed and the occupation permit for the entire building was issued in May 2013. Phased move-in of academic and administrative departments had started since March 2013 and the complex would be fully operational in the new academic year 2013/14.

Construction of the Jockey Club Innovation Tower, with the capital expenditure of \$389.7 million (2012: \$206.4 million) being incurred during the year, was also basically completed and the occupation permit was issued in August 2013. Interior fitting would continue, with gradual move-in of the School of Design during the latter part of 2013. The building with its iconic design will bring an impressive look to the landscape of our campus.

The University continuously reviews its space requirements and utilization with a view to providing a functional and sustainable campus for learning, teaching and research. The Library Extension and Revitalization project has the support of UGC, pending submission for Government funding. Planning for a number of new projects, including the Redevelopment of Block X and the Campus Extension at Ho Man Tin, is now underway.

* The University Capital Development Programmes Analysis is provided in Figure 5.
大學基建項目分析詳情載於圖五。

投資

按校董會已審批的投資策略及指引為基礎，投資委員會制定了一套新的投資策略，旨在配合本校的現金流需求及長遠發展作出資產及負債配對的投資計劃。投資委員會挑選的獨立基金經理的投資資本佔本校可投資資金的40%。

截至2013年6月30日止，本校投資的分配如下：78.8%(2012: 99.6%) 投放於固定收入證券、21.1%(2012: 0.3%) 投放於股票。本校於本年度錄得的投資淨收益為1.32億港元(2012: 3,210萬港元)。

基建項目

年內用於基建項目及校舍改善工程之總開支為7.403億港元(2012: 11.566億港元)。本年度用於第8期校園發展計劃(教學樓Z座)的開支為2.463億港元(2012: 5.07億港元)。該項目已按原定計劃竣工，而入伙紙亦已於2013年5月獲批。各有關學術及行政部門已於2013年3月開始陸續遷入新大樓，預期新校舍將於2013/14新學年可全面投入運作。

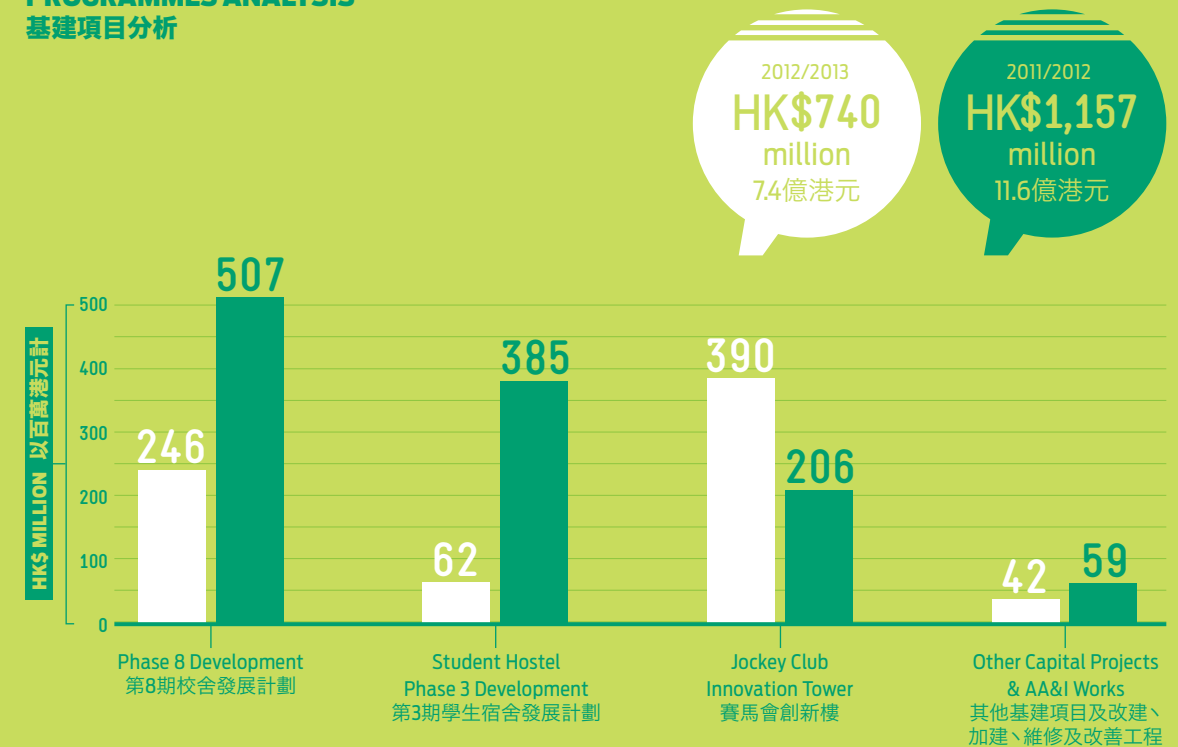
本年度用於賽馬會創新樓的開支為3.897億港元(2012: 2.064億港元)。該項目基本上已竣工並已於2013年8月獲批入伙紙。在其室內裝修工程繼續進行的同時，設計學院也將於2013年下半年逐步遷入。賽馬會創新樓的獨特設計，將會為理大校園帶來新面貌。

本校不斷檢討空間需求及其使用情況，以提供可持續發展及使用的校園供教學與研究之用。圖書館擴建及改進項目已獲得教資會的支持，正等待向政府申請資助。若干新項目包括教學樓X座的重建及在何文田擴建校舍的籌劃工作亦已展開。

CAPITAL DEVELOPMENT PROGRAMMES ANALYSIS 基建項目分析

	2013		2012	
	HK\$m	%	HK\$m	%
Phase 8 Development 第8期校舍發展計劃	246	33.2	507	43.8
Student Hostel Phase 3 Development 第3期學生宿舍發展計劃	62	8.4	385	33.3
Jockey Club Innovation Tower 賽馬會創新樓	390	52.7	206	17.8
Other Capital Projects & AA&I Works 其他基建項目及改建、加建、維修及改善工程	42	5.7	59	5.1
	740	100	1,157	100

FIGURE 5 圖五
CAPITAL DEVELOPMENT PROGRAMMES ANALYSIS
基建項目分析



DONATIONS

Donations raised this year were \$220.1 million (2012: \$135.5 million). During the year, the University successfully matched and received a grant of \$102.2 million under the Government Sixth Matching Grant Scheme. The Hong Kong Jockey Club Charities Trust donated \$84.7 million during the year of which \$77.5 million was for the construction of the Jockey Club Innovation Tower; the latter sum was part of the total budget of \$218.3 million approved by the Trust for the Jockey Club Innovation Tower capital project. With the help of donors, contributions of the PolyU Development Foundation Fund and the funding from the Matching Grant Scheme, the University established an Endowed Professorship Scheme in 2013 to recognize the elite scholars and to support the continuous advancement of the designated academic and research areas.

The University is truly grateful to all donors for their generosity and support, which affirms the public's recognition of the University's academic and research achievements, activities and administration capabilities.

* The University Donation Analysis is provided in Figure 6. 大學捐助分析詳情載於圖六。

DONATION ANALYSIS 外界捐助分析

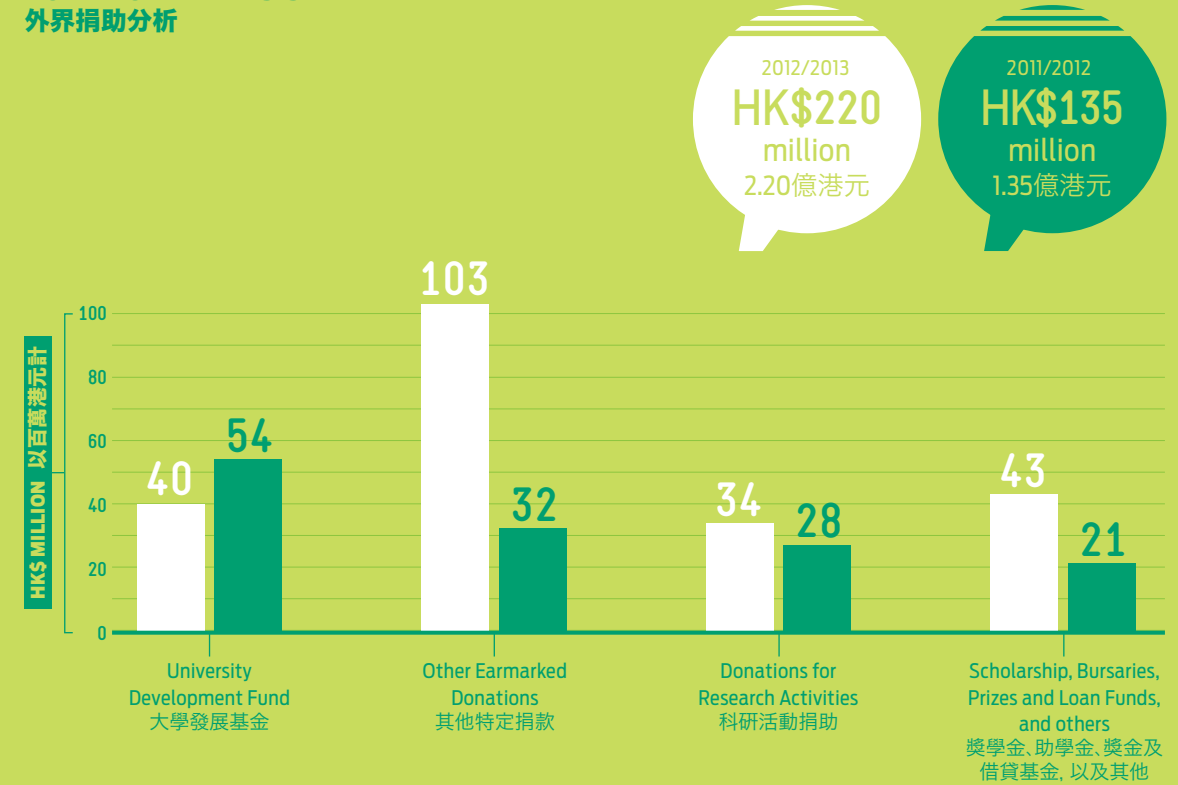
	2013		2012	
	HK\$'m	%	HK\$'m	%
University Development Fund 大學發展基金	40	18.2	54	40.0
Other Earmarked Donations 其他特定捐款	103	46.8	32	23.7
Donations for Research Activities 科研活動捐助	34	15.5	28	20.7
Scholarship, Bursaries, Prizes and Loan Funds, and others 獎學金、助學金、獎金及借貸基金, 以及其他	43	19.5	21	15.6
	220	100	135	100

捐款

本校本年度籌募捐款共計 2.201 億港元 (2012 : 1.355 億港元)。本校於第 6 期配對補助金計劃中成功配對並收到 1.022 億港元。另外, 香港賽馬會慈善信託基金於本年度捐贈了 8,470 萬港元予本校, 其中包括為興建賽馬會創新樓的 7,750 萬港元, 後者屬於信託基金已批核的賽馬會創新樓建築總預算金額 2.183 億港元之部分。憑著捐款人的支持、理大發展基金的收益與配對補助金的撥款, 本校於 2013 年創立了「勵學教授冠名計劃」, 以表彰頂尖學者並為其在特定學術研究領域的持續提升提供支持。

本校衷心感謝所有捐款人的慷慨捐贈及支持。捐贈者對本校的鼎力支持亦證明了本校的學術成就、科研活動及行政管理能力已被普羅大眾廣泛認同。

FIGURE 6 圖六
DONATION ANALYSIS
外界捐助分析



FINANCIAL OUTLOOK

To cater for the University's Strategic Plan and the consolidation of the new four-year undergraduate structure, a higher level of resources demand is expected in the future.

With the aim of recruiting and retaining talent, the Review of the Salary and Reward System currently underway will help enhance the University's pool of high-quality staff. Long-term Campus Planning will guide the University to provide better environment and facilities to achieve its mission. Our strong financial position will be a good foundation for these various initiatives.

We cannot foresee accurately what the future will be, particularly the condition of the financial markets. The finance team, however, will strive to follow the best risk and financial management practices to ensure that the University's Strategic Plan is well executed, allowing us to achieve our mission in nurturing talents for the betterment of Hong Kong and our nation.

財政展望

為配合大學的策略性發展計劃及進入新四年本科學制的鞏固期, 本校預期未來的資源需求會持續增加。

為達到招聘及保留人才的目的, 本校現正進行薪酬及獎勵制度檢討以改進大學的人力資源管理。長遠校園發展計劃可為大學提供最佳的空間及設備以助實現其使命。本校穩健的財務狀況為以上各項目提供了良好基礎。

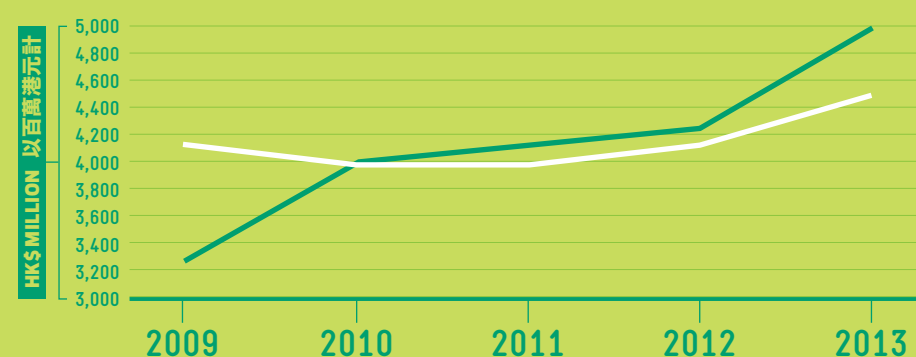
雖然我們不能預測未來, 尤其是金融市場的變化。但我們的財務團隊致力遵行良好的風險及財務管理, 確保大學的策略性發展計劃能夠有效地執行, 以達成成為香港及國家作育英才的使命。

INCOME AND EXPENDITURE ANALYSIS FOR 2009-2013 (AT UNIVERSITY LEVEL)

二零零九至二零一三年度收支賬項分析 (大學層面)

	2009		2010		2011		2012		2013	
	HK\$m	%	HK\$m	%	HK\$m	%	HK\$m	%	HK\$m	%
INCOME 收入										
Government Subventions 政府撥款	2,123	65.3	2,147	53.8	2,256	54.7	2,339	55.1	2,787	55.8
Tuition and Other Fees 學費及其他收費	1,137	35.0	1,198	30.0	1,264	30.6	1,362	32.0	1,480	29.6
Net Investment Gain/(Loss) 投資淨收益/(虧損)	(472)	(14.5)	136	3.4	138	3.3	32	0.8	132	2.6
Donations and Benefactions 外界捐助	135	4.2	193	4.9	131	3.2	136	3.2	220	4.4
Other Income 其他收入	323	10	315	7.9	339	8.2	377	8.9	378	7.6
TOTAL INCOME 總收入	3,246	100	3,989	100	4,128	100	4,246	100	4,997	100
EXPENDITURE 開支										
Learning and Research 學習及科研										
Instruction and Research 教學及科研	2,574	62.6	2,492	62.9	2,476	62.2	2,483	60.7	2,605	58.2
Library 圖書館	137	3.3	128	3.2	133	3.3	135	3.3	135	3.0
Central Computing Facilities 中央電腦設施	115	2.8	109	2.8	112	2.8	118	2.9	137	3.1
Other Academic Services 其他教學服務	196	4.8	187	4.7	196	4.9	201	4.9	222	4.9
Institutional Support 教學支援										
Management and General 管理及一般項目	217	5.3	206	5.2	213	5.4	221	5.4	248	5.5
Premises and Related Expenses 校舍及有關開支	666	16.2	638	16.1	638	16.0	720	17.7	906	20.3
Student and General Educational Services 學生及一般教育服務	197	4.8	181	4.6	189	4.7	188	4.6	206	4.6
Other Activities 其他活動	10	0.2	15	0.4	18	0.5	10	0.2	5	0.1
Finance Costs 財務費用	-	-	5	0.1	8	0.2	12	0.3	14	0.3
TOTAL EXPENDITURE 總開支	4,112	100	3,961	100	3,983	100	4,088	100	4,478	100

FIGURE 7 圖七
UNIVERSITY INCOME AND EXPENDITURE ANALYSIS FOR 2009-2013
二零零九至二零一三年度大學收支賬項分析



KEY 圖例

- Total Income 總收入
- Total Expenditure 總開支

* Note: Deficit recorded in 2008/09 was mainly due to the planned deployment of the reserves accumulated in the past years, to support various strategic initiatives for strengthening the University's teaching and research development as well as preparation for the new 4-year undergraduate programme.
註: 2008/09年度錄得之虧損主要是因為本校調配過往數年累積之儲備應付多項策略性的計劃, 以加強本校教學及科研的發展, 同時亦為迎接新大學四年制作好準備。

INCOME AND EXPENDITURE STATEMENT (FOR THE YEAR ENDED 30 JUNE 2013)

收支賬項 (截至二零一三年六月三十日止年度)

	CONSOLIDATED 綜合		UNIVERSITY 大學	
	2013	2012	2013	2012
In thousands of Hong Kong dollars 以千港元計				
INCOME 收入				
Government Subventions 政府撥款	2,794,474	2,343,327	2,787,565	2,339,447
Tuition and Other Fees 學費及其他收費	2,082,425	1,915,737	1,479,833	1,362,339
Net Investment Gain 投資淨收益	167,572	36,792	132,015	32,101
Donations and Benefactions 外界捐助	223,549	88,685	220,078	135,495
Other Income 其他收入	720,025	637,319	377,580	376,598
	5,988,045	5,021,860	4,997,071	4,245,980
EXPENDITURE 開支				
Learning and Research 學習及科研				
Instruction and Research 教學及科研	2,838,683	2,692,741	2,604,721	2,482,933
Library 圖書館	149,664	147,324	135,136	135,046
Central Computing Facilities 中央電腦設施	155,226	130,458	137,177	117,914
Other Academic Services 其他教學服務	262,025	241,272	221,641	200,822
Institutional Support 教學支援				
Management and General 管理及一般項目	320,391	292,997	247,741	221,335
Premises and Related Expenses 校舍及有關開支	995,163	778,266	906,554	720,273
Student and General Educational Services 學生及一般教育服務	222,415	201,209	205,948	187,892
Other Activities 其他活動	299,074	281,134	5,538	9,482
	5,242,641	4,765,401	4,464,456	4,075,697
Finance Costs 財務費用	13,775	12,550	13,775	12,550
	5,256,416	4,777,951	4,478,231	4,088,247
SURPLUS FROM OPERATIONS 營運盈餘	731,629	243,909	518,840	157,733
Gain/(Loss) on Disposal of Subsidiary/Associates /Jointly Controlled Entities 出售附屬公司/聯營公司/共同控制實體之收益/(虧損)	-	35,748	325	-
Share of Loss of Associates 應佔聯營公司虧損	(102)	(138)	-	-
Share of Profit/(Loss) of Jointly Controlled Entities 應佔共同控制實體溢利/(虧損)	2,974	5,131	-	-
SURPLUS BEFORE TAXATION 除稅前盈餘	734,501	284,650	519,165	157,733
Income Tax 所得稅	(4,774)	(4,192)	(4,774)	(3,289)
SURPLUS FOR THE YEAR 本年度盈餘	729,727	280,458	514,391	154,444

* The above Income and Expenditure Statement is extracted from the audited financial statements for this year ended 30 June 2013.
以上收支賬項摘錄自二零一三年六月三十日止年度經核數師審核之財務報表。

STATEMENT OF FINANCIAL POSITION (AS AT 30 JUNE 2013)

財務狀況表 (截至二零一三年六月三十日止年度)

(Expressed in thousands of Hong Kong dollars 以千港元計)

	CONSOLIDATED 綜合		UNIVERSITY 大學	
	2013	2012	2013	2012
NON-CURRENT ASSETS 非流動資產				
Fixed Assets 固定資產	5,544,767	5,226,650	5,325,284	4,985,736
Investments in Subsidiaries 附屬公司之投資	-	-	175,999	170,947
Interests in Associates 聯營公司權益	2,548	2,650	-	-
Interests in Jointly Controlled Entities 共同控制實體權益	37,737	33,697	-	-
Non-current Financial Assets 非流動金融資產	328,248	488,594	328,248	488,594
Employee Benefits Assets 員工福利資產	5,737	6,849	5,737	6,849
	5,919,037	5,758,440	5,835,268	5,652,126
CURRENT ASSETS 流動資產				
Current Financial Assets 流動金融資產	2,461,734	54,573	2,461,734	54,573
Loans to Subsidiaries 附屬公司貸款	-	-	134,810	187,080
Staff Loans 教職員貸款	42,150	48,120	42,150	48,120
Inventories 存貨	3,814	2,791	-	-
Accounts and Other Receivable 應收賬項	469,161	400,210	446,836	385,350
Cash and Deposits with Banks 現金及銀行存款	2,955,281	4,209,886	2,790,351	4,058,180
	5,932,140	4,715,580	5,875,881	4,733,303
CURRENT LIABILITIES 流動負債				
Bank Loan for On-lending to Staff 轉貸予教職員之銀行貸款	42,150	48,120	42,150	48,120
Loans and Borrowings 貸款	66,311	53,711	66,311	53,711
Accounts and Other Payables 應付賬款	837,740	788,251	1,547,672	1,332,073
Provision for Employee Benefits 員工福利撥備	352,410	293,144	291,208	241,910
Deferred Income 遞延收入	374,433	218,490	365,036	210,954
Receipts in Advance 預收款項	187,507	285,420	142,956	227,609
Tax Payable 應付稅項	5,795	1,626	5,795	1,626
	1,866,346	1,688,762	2,461,128	2,116,003
NET CURRENT ASSETS 淨流動資產	4,065,794	3,026,818	3,414,753	2,617,300
TOTAL ASSETS LESS CURRENT LIABILITIES 總資產扣減流動負債	9,984,831	8,785,258	9,250,021	8,269,426
NON-CURRENT LIABILITIES 非流動負債				
Loans and Borrowings 貸款	1,289,813	1,356,124	1,289,813	1,356,124
Provision for Employee Benefits 員工福利撥備	383,052	338,214	381,106	336,370
Deferred Income 遞延收入	78,864	90,067	78,850	90,038
	1,751,729	1,784,405	1,749,769	1,782,532
DEFERRED CAPITAL FUNDS 遞延資本基金	3,470,397	2,971,430	3,470,397	2,971,430
NET ASSETS 淨資產	4,762,705	4,029,423	4,029,855	3,515,464
REPRESENTING 相當於				
General Funds 一般基金	3,852,755	3,220,786	3,119,905	2,706,827
Restricted Funds 特定基金	909,950	808,637	909,950	808,637
TOTAL 總額	4,762,705	4,029,423	4,029,855	3,515,464

Ms Marjorie Yang Mun-tak 楊敏德女士, GBS, JP
Chairman of Council 校董會主席

Professor Timothy Tong Wai-cheung 唐偉章教授, JP
President 校長

Dr Patrick Poon Sun-cheong 潘燊昌博士
Treasurer 司庫

Mr Louis Heung Sai-kit 香世傑先生
Director of Finance 財務總監

* The above Statement of Financial Position is extracted from the audited financial statements for the year ended 30 June 2013.
以上財務狀況表摘錄自二零一三年六月三十日止年度經核數師審核之財務報表。