

Structural Engineering Research Laboratory

*Room Y001, Block Y,
Department of Civil and Environmental Engineering,
The Hong Kong Polytechnic University*



THE HONG KONG
POLYTECHNIC UNIVERSITY
香港理工大學



DEPARTMENT OF
CIVIL AND ENVIRONMENTAL ENGINEERING
土木及環境工程學系

Opening Minds • Shaping the Future
啟迪思維 • 成就未來

Introduction

- Structural Engineering Research Laboratory is installed with state of the art equipment to enhance teaching and research in the field of structure.
- The testing for different materials (e.g. reinforced concrete columns, steel column, concrete filled steel columns, FRP strengthened sections, etc.) for monotonic and cyclic tests can be performed in the laboratory.



Main Equipment



10000kN Servo Control Multi-purpose Testing System (MPTS)

The MPTS can provide 10000 kN (vertical) and 1500 kN (horizontal) loading with full displacement control for monotonic and cyclic loading tests.



25000kN compression testing

Acquired by The Chinese National Engineering Research Center for Steel Construction (CNERC). The machine is specifically designed for mechanical tests on typical structural members made of high strength steel and composite materials under a maximum compressive load at 25,000kN.



100 ton loading frame

The laboratory has 3 sets of loading frames with 100 tons loading capacity and mounting loading actuators to carry out the different types loading tests.

Academic Staff



Prof. Teng, J.G. (滕錦光)

President

Chair Professor of Structural Engineering,
Ko Jan Ming Professor in Sustainable
Structures and Materials

Email: jg.teng@polyu.edu.hk



Prof. Dai, J.G. (戴建國)

Professor and Associate Head (Academic Development)

Email: cejgdai@polyu.edu.hk

Homepage: <http://www.cejgdai.com>



Prof. Chan, S.L. (陳紹禮)

Chair Professor of Computational Structural
Engineering

Email: siu-lai.chan@polyu.edu.hk

Homepage: <http://www.polyu.edu.hk/cee/~slchan>



Prof. Ni, Y.Q. (倪一清)

Chair Professor of Smart Structures and Rail Transit

Email: yiqing.ni@polyu.edu.hk

Homepage: <https://www.polyu.edu.hk/cee/~yqni>

Academic Staff



Prof. Chung, K.F. (鍾國輝)

Professor

Email: kwok-fai.chung@polyu.edu.hk

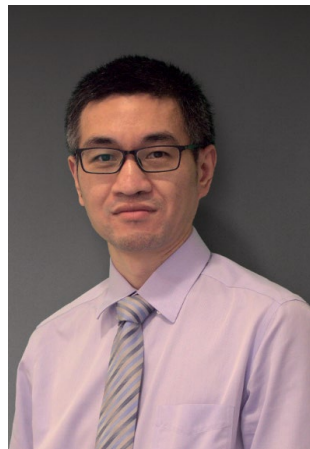
Homepage: <http://www.polyu.edu.hk/cee/~cekchung>



Prof. Yu, T. (余濤)

Professor

Email: tao-cee.yu@polyu.edu.hk



Prof. Zhu, S.Y. (朱松曄)

Professor

Email: ceszhu@polyu.edu.hk

Homepage: <http://www.polyu.edu.hk/cee/~ceszhu/>



Dr Lam, S.S., Eddie (林少書)

Associate Professor

Email: cesslam@polyu.edu.hk

Academic Staff



Dr Chan, T. M. (陳德明)

Associate Professor

Email: tak-ming.chan@polyu.edu.hk

Homepage: <http://www.polyu.edu.hk/cee/~tmchan/>



Dr Dong, Y. (董优)

Assistant Professor

Email: you.dong@polyu.edu.hk

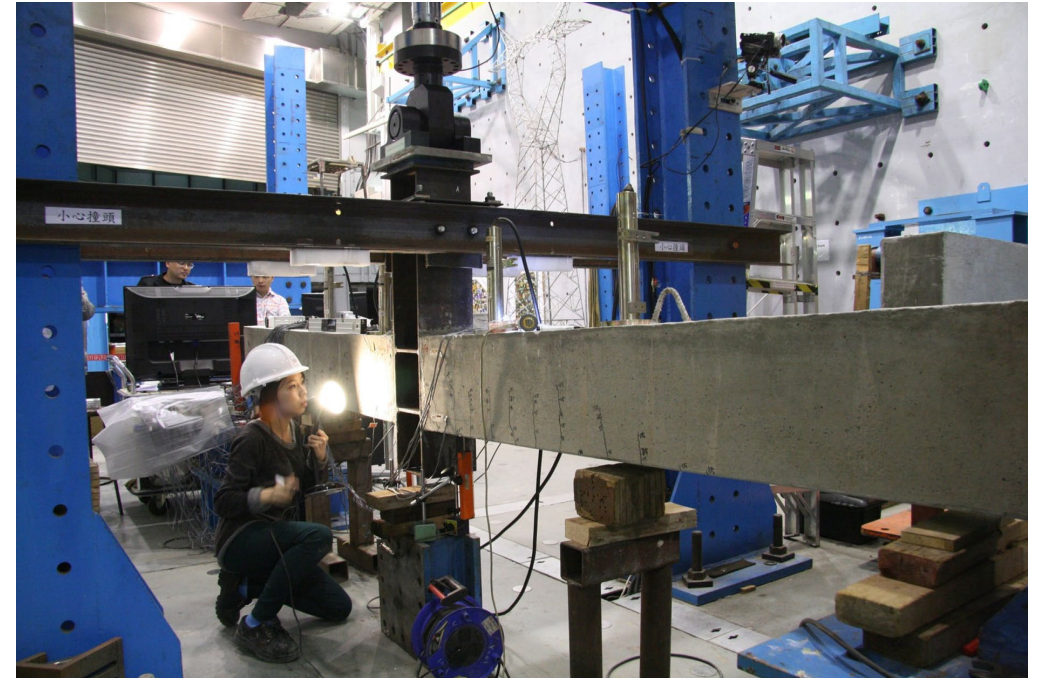
Homepage: <http://youdongpolyu.weebly.com>

Research Spotlight

FRP Research



Concrete Beam Steel Column Joint Test

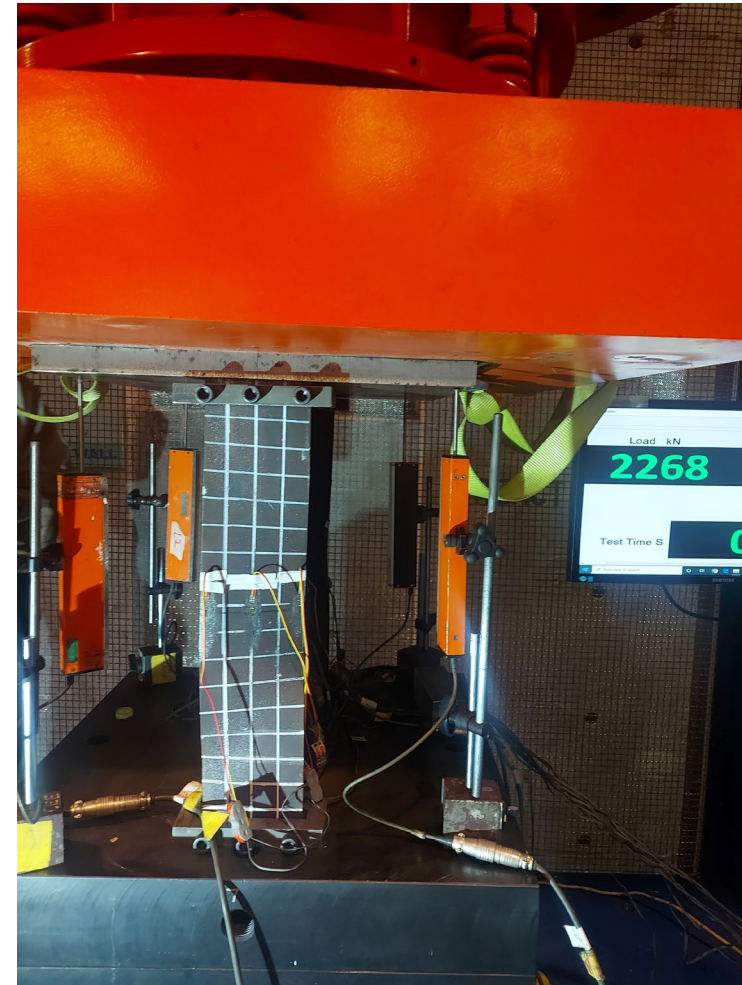


Research Spotlight

Steel frame joint test



"I" Section Coloumn test



Research Spotlight

High Strength Steel Long Columns



GFRP rebar concrete beam test



Lab-in-charge and Technical Staff

Lab-in-Charge



Dr Chan, T. M. (陳德明)

Associate Professor

Email: tak-ming.chan@polyu.edu.hk

Homepage: <http://www.polyu.edu.hk/cee/~tmchan/>

Address

Room Y001, The Hong Kong Polytechnic University

Opening Hours

Monday 8:45am – 12:30pm, 1:30pm – 5:45pm

Tuesday to Friday 8:45am – 12:30pm, 1:30pm – 5:30pm
(excluding Saturday, Sunday & public holidays)

Technical Staff



Mr Lai, Y.M., Harry

Email: ymharry.lai@polyu.edu.hk

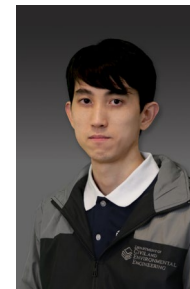
Tel: (852) 3400 8321



Mr Cheung, K.L., Henry

Email: kclxcheun@polyu.edu.hk

Tel: (852) 2766 6083



Mr. Yip K.F., Francis

Email: kfungyip@polyu.edu.hk

Tel: (852) 3400 8321