

VOSviewer (SOFTWARE) INTERACTIVE VIEW A BRIEF INSTRUCTION (2 PARTS) (5/31/2021)

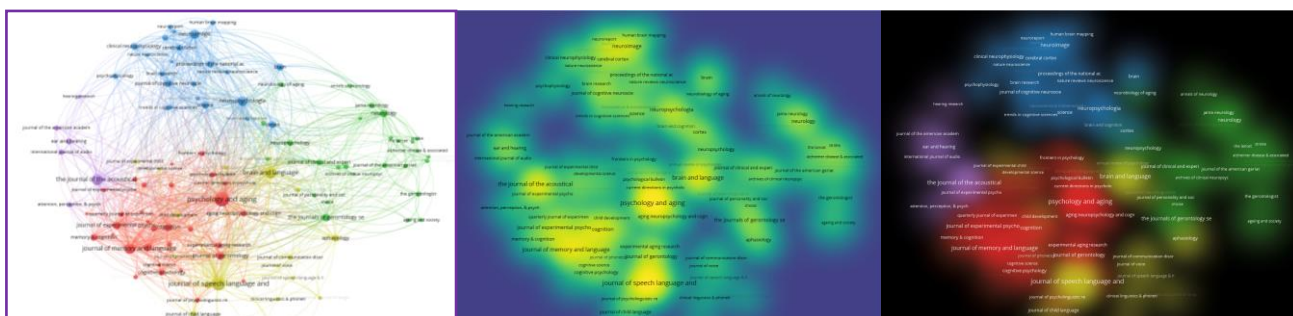
Part 1: Introduction

The two .txt data files are **bibliometric data files** of statistically analyzed citation source which can be visualized in the following images.

Data

[\[map\]](#) [\[network\]](#)

Still Images of Visualization (network, item-density, cluster-density)



They tell us how citation sources are related according to the condition below

- 1) A citation source is cited by more than 100 times;
- 2) A citation source has published papers on the topic of “aging and linguistics” from 1969-2021, with each paper cited by other 2 papers; and
- 3) A citation source has the original **bibliographical data** generated from the open citation database, [Dimensions](#) and **bibliometric data** generated from [VOSviewer 1.6.16 for Microsoft Windows systems](#).

Part 2: Instruction by 6 Steps

Now let’s have **an interactive view** of the above still visualized images on a computer (not mobiles) by [VOSviewer](#), a software tool for constructing and visualizing bibliometric networks.

Step 1: Copy the data in the following link on a notepad



https://www.polyu.edu.hk/cbs/rcfcn/images/cdl_visual_display/map50.txt

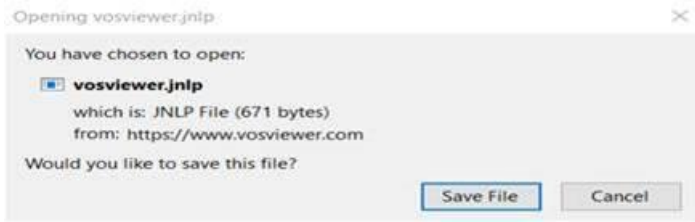
Step 2: Save the 1st notepad file “map50copy.txt” on your hard drive

Step 3: Repeat the step 1 & 2 for the following link, and save the 2nd notepad file “network50copy.txt”

https://www.polyu.edu.hk/cbs/rcfcn/images/cdl_visual_display/network50.txt

Step 4: [Launch VOSviewer](#) by following online instruction (To run VOSviewer, Java version 8 or higher needs to be installed on your system. If Java is not installed on your system, you can obtain it [here](#)). If one wishes to have the software downloaded on one’s Window/Mac computer, see [Download VOSviewer](#) and its instruction. VOSviewer is open program to the general publics)

1) Save file



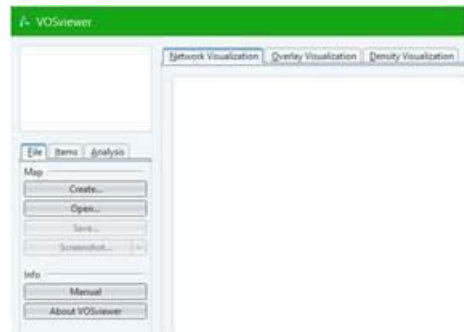
4) Ok/Run



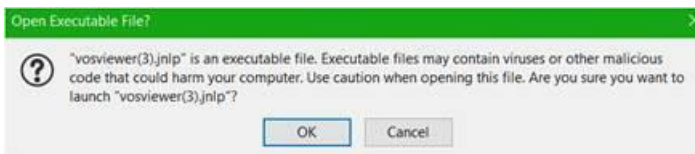
2) Locate VOSviewer download



5) VOSviewer opened

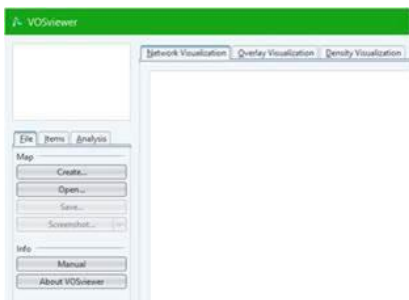


3) Open file



Step 5: Click open and then upload the 2 saved .txt files

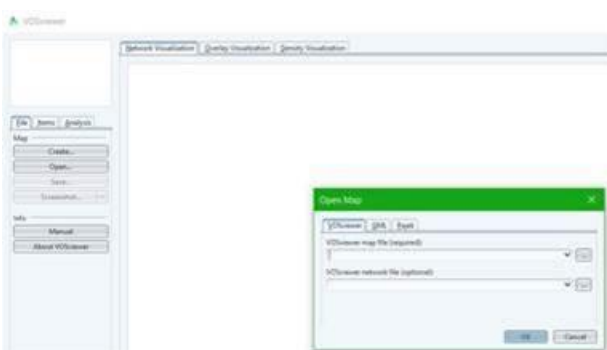
1. Open



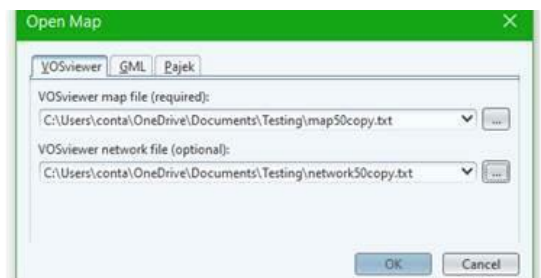
3. Locate map and network files saved on our hard drive from CDL web [\[map\]](#)[\[network\]](#)

Name	Status	Date modified	Type	Size
map50copy		5/27/2021 8:29 PM	Text Document	7 KB
network50copy		5/27/2021 8:31 PM	Text Document	87 KB

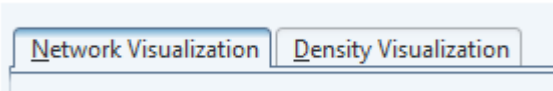
2. Upload map file and network file



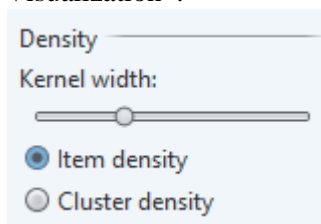
4. Click ok



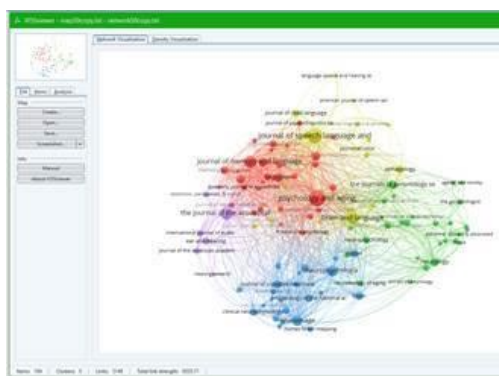
Step 6: Click ok to see the interactive maps



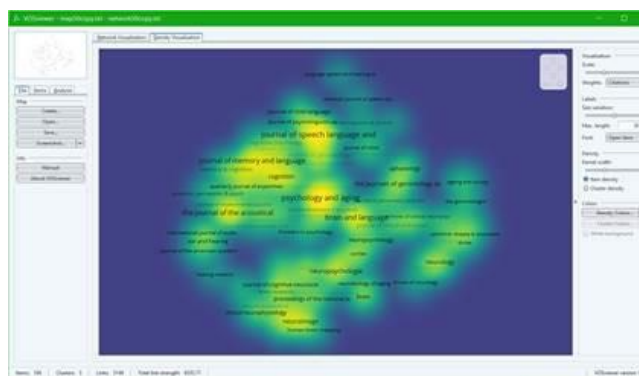
- 1) Click one of tabs at left up corner of the screen
- 2) For two choices of density visualization, click one of the choice on the right side screen of Density Visualization :



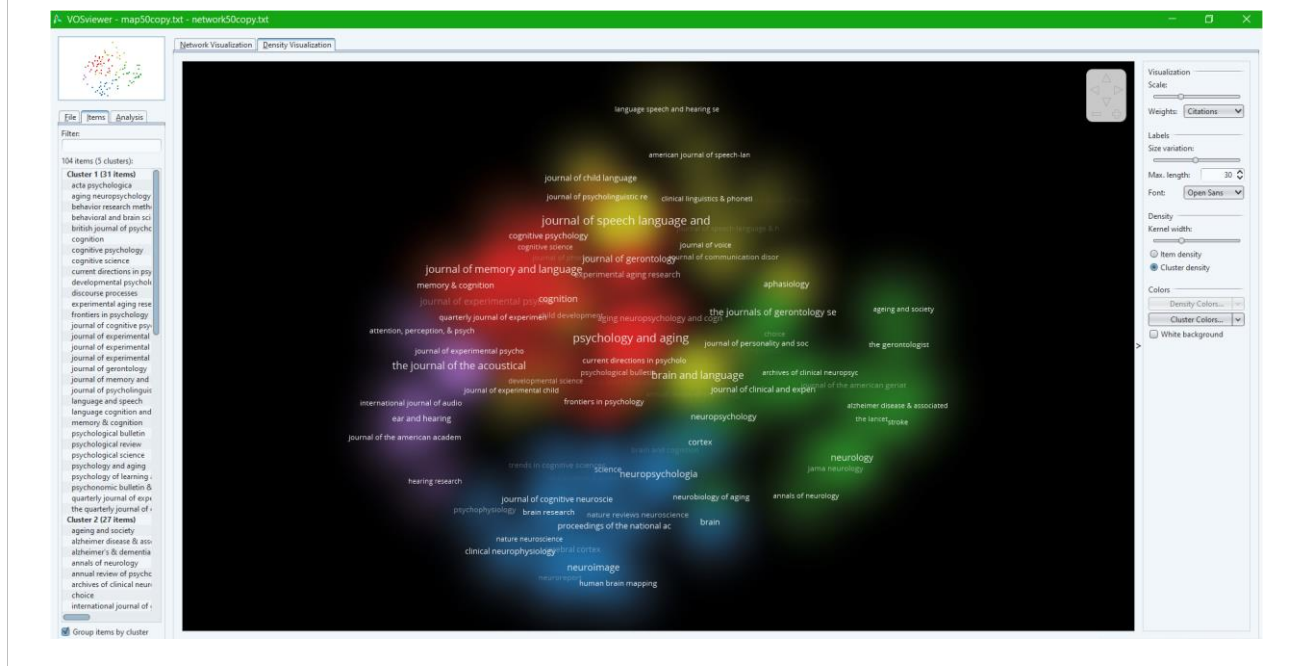
For **Network Visualization**, you can see the following interactive image



For **Item Density Visualization**, you can see the following interactive image



For **Cluster Density Visualization**, you can see the following interactive image



(NOTE: For more details of screen presentation functionality of VOSviewer, please view this [video](https://www.vosviewer.com/getting-started) from <https://www.vosviewer.com/getting-started> and also this [video](https://youtu.be/3aSKhFeXIU4) from <https://youtu.be/3aSKhFeXIU4>).