



THE HONG KONG
POLYTECHNIC UNIVERSITY
香港理工大學

Opening Minds • Shaping the Future • 啟迪思維 • 成就未來

	DEPARTMENT OF	
	BUILDING & REAL ESTATE	
	建築及房地產學系	

INTERNATIONAL • COLLABORATIVE • CONSTRUCTION



BRE Connected

Jun 2018

Department of
Building and Real Estate

建築及房地產學系



2766 5815



<http://bre.polyu.edu.hk/>



HKPolyUBRE



香港理工大学建筑及房地产学系

Happenings

Connecting IRE Graduates

Networking matters! On 9th March 2018, the reunion dinner of the MSc in International Real Estate (Zhejiang) Programme (IRE) successfully connected graduates with one another and with us on campus. On this special occasion, in addition to a warm welcome, Prof. Albert Chan, Head of BRE, together with the IRE teachers including Prof. Geoffrey Shen, Prof. Eddie Hui, Dr. Stanley Yeung and Ms Hebe How got excited to catch up with this group of professionals whose respective expertise extends from real estate, urban planning, engineering, surveying to technology in Hong Kong and the Mainland. This special occasion was a feast of reminiscence of their old schools and of networking with old friends and teachers. Grinning from ear to ear in this reunion, all hope a close bond will further blossom in the future.

Aiming to enhance mainland students' networks and knowledge of international real estate, the IRE Programme is a taught postgraduate programme which consists of traditional teaching and international study visits to overseas universities.



More:



Gammon Visit

Prof. Albert Chan and Dr. Patrick Fong welcomed four guests from Gammon Construction Ltd. over lunch on 15th March 2018. The guests included Mr. Nigel White, Executive Director; Mr. Neville Poon, Senior Commercial Manager; Ms Amelia Cheng, Commercial Manager and Ms Dorothy Ma, Managing Quantity Surveyor.

During lunch, they discussed innovation and development in the construction industry and Gammon, in particular, as Mr. Thomas Ho, JP, Chief Executive of Gammon Construction Ltd. has spearheaded innovation in his company. He is also Chairman of the Construction Innovation and Technology Application Centre under the Construction Industry Council (CIC). Mr. Ho received the Outstanding PolyU Alumni Award in 2009 and the Outstanding BRE Alumni Award in 2012.

After lunch, Dr. Fong gave an overview of the department to the four guests and his research work in knowledge management, as practitioners in the construction industry are faced with huge amounts of data and information every day. How to remove the 'noise' from this data and gain insights was the focus of this open exchange.

Our gratitude goes to Gammon Construction Ltd. for their record in recruiting our students for internships and part-time positions. In addition, many of our graduates are recruited by Gammon each year, a dream company for many. It is no coincidence that Gammon is revealed as one of the Hong Kong Special Administrative Region's top 75 companies according to Randstad Employer Brand Research 2018.



Happenings

BRE Publicized on the PolyU Counsellors Days

To publicize the wide host of PolyU programmes, secondary school counsellors from Canada, China, Singapore, Japan, South Korea, Taiwan, Thailand, Malaysia, South Africa, India, Indonesia and Philippines, etc. were invited to the PolyU Counsellors Days from 21st to 23rd March 2018. For BRE, Dr. Patrick Fong, Associate Head (Partnership), showcased the strengths of our internationally-recognized programmes and ever-improving facilities at the fair. In addition, a tour to our Smart City Laboratory was an indispensable part of the whole function for the counsellors. With the concerted effort of several Departments and Faculties, the event was a great success. We heartily thank all of you visiting counsellors.



Guest Lectures on the Surveying Profession

Mr. Marcus Wong, who is a quantity surveying manager in Able Engineering Company Ltd. and serves as a panel member of the Hong Kong Institute of Surveyors (HKIS), was invited to host our guest lectures on 'Professionalism of Quantity Surveyors in Hong Kong' held on both the PolyU and SPEED campuses, on 9th and 12th April 2018, respectively. The lectures enriched our undergraduate students' understanding of current practice in building measurement, cost estimation and tender documentation as well as the responsibilities involved and of the future for those becoming excellent quantity surveyors. In addition, Marcus shared his own experiences in gaining HKIS chartership status.

Dr. Francis Siu, Leader of the Subject, 'Measurement, Documentation and Estimating', undertook the important role of facilitating the fruitful discussion which occurred between Marcus and our students. Through the Lecture and the discussion, our BRE students are now better prepared in terms of knowledge, attitude, and ethics awareness, for careers as professional surveyors in the near future.



Happenings

A Fabulous Chat with Exchange Students

We not only encourage our students to study abroad but also welcome inbound exchange students from overseas and mainland universities through our exchange programme. On 19th March 2018, a warm gathering with light refreshments was organized for a group of our local students and inbound students from Loughborough University, Curtin University, Tongji University and Tamkang University. Following a hearty welcome, Prof. Albert Chan, Head of BRE, shared some fruitful and interesting student exchange stories. In addition, Dr. Patrick Fong, Associate Head (Partnership) gave an introduction to the range of our leading programmes and vibrant activities. The local students grabbed this opportunity to learn more about the universities of the inbound students, where they themselves will later study through our exchange programme. Surely, the inbound students gained a better understanding of this big family.



Prof. Chan, Dr. Fong, Dr. Sun Yi, Assistant Professor, Dr. Michael Sing, Research Assistant Professor, Ms Janice Lau, Executive Officer (Student Affairs & Services) and the students had a valuable and enjoyable chat during that afternoon. This was an important step towards opening up a wide network of friends and an eye-opening multi-cultural experience.



Happenings

Sharing by Outbound Exchange Students

YUEN Wai Pong

Year 3 Student
BSc (Hons) in Surveying Programme
Semester 2 in Tsinghua University
Summer School at University of Cambridge

"I am overcoming a very unique challenge for a person of my age – living independently in an unfamiliar environment for a period. Being an exchange student in Tsinghua is much like becoming a child once again. Also, my stay in the world of Mandarin is a golden opportunity for me to become familiar with Mandarin in the manner of a native speaker. This rare learning opportunity gives me a better understanding of people from different walks of life in mainland China and their culture." Wai Pong says. After Tsinghua, Wai Pong will attend the Summer School at University of Cambridge.



FUJII Miki

Year 4 Student
BSc (Hons) in Surveying Programme
In Waseda University

"I spend one semester during my final year at Waseda University; it indeed broadens my horizon and working opportunities. Among the various Departments, I have chosen School of International Liberal Studies (SILS). SILS offers a range of subjects from urban planning to the Japanese real estate economics, which shows a flexibility of subjects for Real Estate students. While around one-third of the students are non-local, I have made new friends from various nationalities and indeed learnt their culture and etiquette. Moreover, I am exposed with a variety of Real Estate related internship programmes." To sum up, Miki is truly grateful to have had an exchange opportunity in Waseda University. She highly appreciates the BRE Department for its great help, especially Dr. Fong and Dr. Sing who offered much advice and encouragement.



More:



Happenings

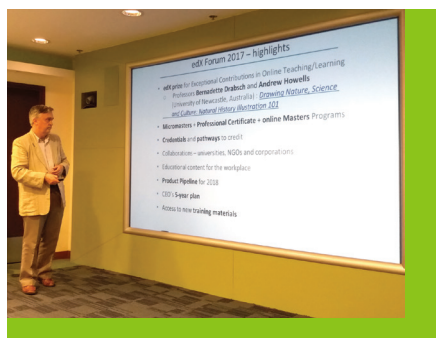
10th Anniversary of BRE Distinguished Lecture Series

Since the launch in 2009, the BRE Distinguished Lecture Series has just reached its first decade. We believe some of you have already attended one or more of these signature events. They provide good choices for your continuing professional development, CPD. On 11th April and 17th May 2018, our remarkable professors, Prof. Patrick Lam and Prof. Tarek Zayed took us on interesting journeys about the subjects 'Smart Cities: A Cost-Benefit Study Framework in the Digital Age' and 'Smart Bridge Superstructure', respectively. A mix of research studies, theoretical concepts and practical cases in both subjects inspired participants in the Lectures where the speakers met with a round of applause. We have a lot to look forward to in the decades ahead. Don't miss out on any opportunities for continuing your professional development with us!



More:

Enriching Students' Learning Experiences



With our dedication to excellence, we are committed to providing students with the best learning experience possible to enable them to serve the community and beyond in future. In pursuit of this mission, we realize that there is much more work to do on our road map. In mid April, we explored further, the Massive Open Online Courses (MOOCs) on a particular area as a single subject worldwide, and the Small Private Online Courses (SPOCs) on a certain area as part of a subject at university level, from the Educational Development Centre of PolyU as well as the Cluster-Area Requirements Subjects from the Office of General University Requirements of PolyU. The ultimate goal is to encourage students' active learning and thinking 'outside the box' by enhancing classroom teaching and wider subjects with 'more fun'.



Happenings

Facebook Live Chat for International Students

Are you thinking of studying an internationally-recognised programme for a professional career in the construction and real estate field?

Especially for international students, Dr. Daniel Chan, Associate Head (Teaching) chatted live on Facebook to introduce The Hong Kong Polytechnic University and the Faculty of Construction and Environment (FCE) as well as to highlight the wide spectrum of competitive full-time undergraduate programmes offered by BRE and our sister departments within FCE, on 17th April 2018. After a comprehensive presentation, Dr Chan and Mr. Kong Wai Kei, Admissions Officer were on hand to answer questions from the audience on the topics, summer internships, admissions, subjects, campus facilities and career prospects in Hong Kong and overseas, etc. Applications for the 2019/20 academic year will open in October 2018.



Explore a series of leading programme options from the live chat :

Guest Lecture by BIM Professional



With the efforts of Dr. Daniel Chan and Dr. Francis Siu, it was our honour to have the speaker, Mr. Mike Chan, Senior BIM Manager of Chun Wo Construction Holdings Co. Ltd. as our guest lecturer on 'Development and Application of Building Information Modelling (BIM) in Construction Projects in Hong Kong' on campus, on 18th April 2018. This lecture explored why this intelligent 3D model-based process, BIM was becoming increasingly popular in the construction and real estate industry

and how it provided insights for various professionals to better plan, develop, construct and operate buildings and infrastructure by giving concrete examples. Inspired by the speaker, a group of full-time undergraduate students and research students gained a wider perspective and deeper understanding of BIM. They found this subject very useful to future personal career development and current PhD research projects, respectively.



Happenings

Can Students Have a Say? Sharing on a New Learning Pedagogy

On 18th April, Dr. Patrick Fong together with colleagues from several other PolyU departments, shared in an Education Development Centre's workshop entitled 'Co-creating the Syllabus with Students and Graduates in Rapidly Advancing Business and Technology Areas'. This was a 'mid-way' sharing as



part of a Larger-Scale Collaborative Project funded under a PolyU Teaching Development Grant 2016-19, spearheaded by Prof. Eric Tsui of the Department of Industrial and Systems Engineering. The workshop attracted participants not only from within the PolyU community but audiences from private organizations, sister institutions and government departments.

Academic members of the project team have been piloting this new learning pedagogy during their teaching in the past year. Dr. Fong, in fact, piloted this concept in his teaching of BRE440, Cost and Value Management, in the first semester of this academic year. About 60 students, including 8 inbound exchange students, had a taste of this new methodology with fun-filled outcomes. The focus question set by Dr. Fong was 'How will the built environment evolve in the next ten years?' Students worked in teams to develop scenarios with Post-it Notes and scenario development templates, use mobile devices for seeking information while also seated in circles, to perhaps better envision multiple futures with uncertainties, and taking into account numerous contributing factors such as big data, the sharing economy, the Internet of Things, robotics and automation, demographic changes, generational differences, land and housing issues, etc.

Feedback from students were generally very positive about this learning pedagogy and some already foresaw its uses in their future jobs.

"At first, we mistakenly believed that these ideas were unachievable within the given timeframe (the next 10 years). After some research, however we found that some of them were actually already being realized. Apart from encouraging us to think creatively, this exercise undoubtedly exposed us to the newest developments in the construction industry."

With such enthusiastic responses, Dr. Fong cannot wait to again roll out the approach in the same subject in the next academic year, in September. He is sure that with the participation of students and the flair they display, students will enjoy another fun learning time.

Hot off the press: This open curriculum project has just won the Gold award in the Future Learning category for PolyU in this year's LearnX Impact Awards in Australia. The award ceremony will be hosted in October this year in Melbourne together with its Summit. Stay tuned!



Happenings

PolyU JUPAS Consultation Day – Admissions Strategies

Held on the afternoon of 19th May 2018, PolyU JUPAS Consultation Day gave JUPAS students an ideal platform to better understand the BRE undergraduate programmes through the consultation session and the info seminar before their re-consideration of chosen programmes. On the spot, under the leadership of Prof. Albert Chan, Head of BRE, Dr. Daniel Chan, Associate Head (Teaching); Mr. Kong Wai Kei, Admission Officer; Dr. Ivy Wong, Dr. Francis Siu and Dr. Wadu Mesthrige Jayantha from the programme team; Ms Christine Yeung, Assistant Marketing Manager and students teamed up to give JUPAS students and their parents advice on programme selection, admissions strategies and interview skills. Despite a record temperature reaching 33°C in May, a multitude of visitors joined this Consultation Day.



Check out more about our programmes at our website.



BRE Scholar as a Guest Speaker in HKICM and HKIPM Joint CPD Seminar on 'Steel Frame Construction in Hong Kong: Threats and Opportunities'



Prof. Albert Chan, Head of BRE, was invited to give a seminar on 'Steel Frame Construction in Hong Kong: Threats and Opportunities' on 31st May 2018. This seminar was jointly organized by the Hong Kong Institute of Construction Managers (HKICM), the Hong Kong Institute of Project Management (HKIPM) and our Department with the support of the Australian Institute of Building (Hong Kong Chapter) (AIB).

Prof. Chan gave the insights into the current work practice of structural steelwork in Hong Kong, followed by four construction case applications including a Chinese opera centre, a public swimming pool, a 24-story hotel and a private commercial building for illustrating the major drivers and obstacles to adoption of structural steelwork. Results of opinion surveys were presented to ascertain the predominant driving factors and barriers that affect the future development of the steel construction industry in Hong Kong. On this basis, the marketing strategies and opportunities for promoting an active development of steel construction were formulated. This informative and thought-provoking seminar ended with Prof. Chan's insightful answers to the audience's interesting questions.



Happenings

Study Tours

London, the UK (15-20 May 2018)

(attended a distinguished lecture in the University of Cambridge and visited RICS Headquarters, King's Cross Redevelopment Project, University of Oxford and Kingston Business School, etc.)



Osaka, Japan (16-19 May 2018)

(visited Osaka City Abeno Life Safety Learning Center, Tsunami and Storm Surge Disaster Prevention Station, Maishima Incineration Plant and attended a presentation on Japan Real Estate Institute, etc.)



Happenings

Study Tours

Tokyo, Japan (21-27 May 2018)

(visited Tokyo Institute of Technology, Nishimatsu Construction – Aikawa Technical Research Institute, Kajima Corporation – Nishi Chofu Complex and Daikyo Incorporated, etc.)



Osaka, Japan (21-25 May 2018)

(visited Kindai University and Ritsumeikan University, etc.)



Happenings

BRE Reception

As one of our annual big functions, the BRE Reception is of special significance to our Department, providing an excellent platform for our colleagues, mentors, donors, WIE organisations and graduates to foster a close bond among all parties.

Cheers! 22nd June 2018 marked the success of this year's BRE Reception. We have been developing a very large and close-knit network with alumni and industry professionals for over eight decades. Amid cheers, we sent our sincere gratitude to mentors, donors and WIE organizations for their professional guidance, generosity and training in support of our thriving growth. Meanwhile, we congratulated our graduates on the successful completion of their study in BRE. We are keen to learn about their success and to share our future with them and theirs with us. This celebration signified a thrilling finale of this academic year with our graduates and guests.



Jobs Fitting Alongside Students' Study



STUDENTS ! Are you looking for a job that fits alongside your study? A number of well-known employers in the construction and real estate industry have held a series of recruitment and career talks for our students throughout this academic year, comprising the Hong Kong Jockey Club, Currie & Brown, Chun Wo Construction Holdings Co. Ltd., Knight Frank, Hip Hing Construction, Midland Holdings Ltd. and the Hong Kong Institute of Housing, etc. These talks are a great way for students to gain insights into interview techniques, application procedures, job natures, career paths, company cultures and industrial development. What's more, inspired by the talks, student confidence and determination to develop the construction and real estate professions were reinforced.



Awards & Achievements

Prof. Heng Li's Project Funded by ITF and Industrial Partners



Under the supervision of Prof. Heng Li, Chair Professor of Construction Informatics and Professor of BRE, his research team's new project entitled 'Enabling Technologies based on Computer Vision and Machine Learning for Better Quality Management on Construction Sites' will be supported by huge funds from the Innovation and Technology Fund (ITF) and industrial partners.

This project aims to develop a computer vision (CV) based on technologies with machine learning (ML) for transforming the current manual quality management practice to an automated process. The enabling technologies will analyze site activities and real-time capture by surveillance cameras, and then utilize machine intelligence to determine if there are any quality deviations and defects in site activities. In addition, this project represents a novel development and adoption of CV and ML to liberate human inspectors from tedious site inspections and manual documentation. The technologies can eliminate the problem of quality deviations in construction projects. The technologies will be non-intrusive and require little cost (surveillance cameras are commonly installed in sites) for the implementation. The estimated cost of upgrading an average security surveillance camera to serve quality monitoring is around HK\$300. Therefore, there will be a great potential for widespread adoption.

Funding Scheme for Thematic Research on Built Heritage Conservation

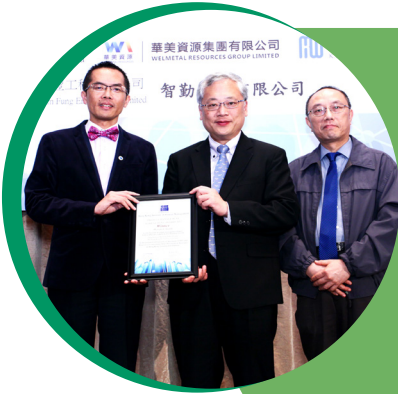
A project entitled 'Integrated Approaches for Point-Line-Plane of Heritage Conservation in Hong Kong: International Experience' has been awarded \$1,951,550 from the funding scheme for thematic research on built heritage conservation. The research team is led by Prof. Edwin Chan of our Department (BRE). Members of the research team include BRE colleagues Dr. Esther Yung and Dr. Michael Sing, Dr. Hok-bun Ku of the Department of Applied Social Sciences, Dr. Honggen Xiao of the School of Hotel and Tourism Management, Prof. Wei Hwa Chiang of the National Taiwan University of Science and Technology, and Prof. Puay Peng Ho of the National University of Singapore.

Like many cities, Hong Kong has long wrestled with conflicting arguments concerning heritage conservation and urban development. Promoting heritage conservation is believed crucial, not just for tourism purposes but also to further cultural identity, urban sustainability and economic development. This 2-year project will develop a framework via a new multi-criteria evaluation model, providing a scientific approach to demonstrate how conservation strategies can be extended from the 'Point' and 'Line' approaches to an integrated 'Point-Line-Plane' approach. The overriding purpose of this study is to provide guiding principles to enable conservation practitioners to effectively implement the integrated 'Point-Line-Plane' approach in Hong Kong for built heritage protection and fully promoting district-wide conservation.



Awards & Achievements

BRE Academic Staff Winning HKIPM Project Management Achievement Awards (2017) in the Research Category



Under the Project Management Achievement Awards (2017) scheme organized by the Hong Kong Institute of Project Management (HKIPM), a research team led by Dr. Daniel Chan, Associate Head (Teaching and Learning) of BRE, was selected for the 'Winner Award' in the category of Research, for their empirical study entitled 'Investigating the Guaranteed Maximum Price (GMP) and Target Cost Contracting (TCC) Procurement Strategies in Hong Kong'. The Awards provide an opportunity for organizations and project managers in different disciplines to showcase their successful projects amongst their counterparts. Practical research project outcomes in Hong Kong of academics' research projects and pertinent aspects of project management are key criteria used when judging the Awards.

On behalf of the research team, which included Prof. Albert Chan and Prof. Patrick Lam, Dr. Chan received the award certificate from a member of the Judging Panel at the HKIPM Annual Dinner on 19th April 2018.

BRE PhD Graduate Reaping a Good Harvest

Congratulations to Dr. Robert Osei-Kyei, our PhD graduate on landing the job of Lecturer in Project Management at the School of Computing, Engineering and Mathematics at the University of Western Sydney, in Australia!

Joining our Department through the Hong Kong PhD Fellowship Scheme (HKPFS) in 2014, under the supervision of Ir Prof. Albert Chan, Robert started his PhD project on the theme 'A Best Practice Framework for Public Private Partnership Implementation for Infrastructure Development in Ghana'. Needless to say, Robert faced a volley of challenges along the way, but, ticking all the right boxes, he successfully completed his PhD project and received the Outstanding PhD Thesis Award (Postgraduate Students) of the Hong Kong Institute of Surveyors in 2017. Robert is certainly an inspiring role model to all our PhD students.

Robert's efforts included work on his favourite research topics including Public Private Partnership, Project Success and Procurement. His future research direction will include, in particular, the subjects, Smart Construction, Sustainability and Virtual Reality Construction Technologies. He took up the new position in Australia on 21st May 2018. We wish Robert every success in the profession!



Awards & Achievements

Starting Master of Philosophy in Real Estate Finance in University of Cambridge after this summer.

Maria Lau Nga Yi
Graduate
BSc (Hons) in Surveying Programme

Maria is heartily thankful to have spent her past 4 years in BRE for a bachelor degree in Surveying. She cannot say enough thank you for all the unfailing guidance and generous supports that the professors, teachers, mentors and supporting staff have given her throughout these years. BRE has shaped her into a future surveyor of integrity and professionalism. The trainings here are genuinely practical yet academic enough for her further studies in any fields related to real estate.

She says, "I am also blessed by a vast variety of industry connections of PolyU and BRE. From which I had the chance to explore both the Hong Kong and London real estate markets during my internships. Once again a big thank-you to every single one of you who have made my undergraduate journey a perfect one. As the saying goes, "Bloom where you are planted". I truly look forward to that one day at which I may give back to BRE and PolyU."



Receiving offers from University College London, Imperial College London and University of Cambridge.

Wang Qiancheng
Graduate
BSc (Hons) in Building Engineering and Management Programme

Qiancheng shared, "I believe, it is fate that has made me be your student and I never forget your guidance and support. It was easy to give up, but I got your motivational advice. It was easy to lose my way, but I got your inspirational words. It was easy to feel overwhelmed, but I got your patience while dealing with me."

Qiancheng is very grateful to Prof. Geoffrey Shen, Prof. Ni Meng and all the staff for equipping him with the knowledge which allows him to see the broader world.



Awards & Achievements

BRE PhD Graduate appointed as Distinguished Professor of 'Qianjiang Scholar' of Zhejiang Province



Dr. Yi Peng, our PhD graduate of 2013, was appointed as a Distinguished Professor of 'Qianjiang Scholar' of Zhejiang Province in May 2018. This programme aims to attract high-level academic leaders across the world and accelerate the development of higher education in Zhejiang Province. In 2018, there are 57 researchers appointed by this programme in Zhejiang Province of China. Dr. Yi has been working in Zhejiang University of Finance and Economics since the end of 2014. His research interests include disaster management and sustainable urbanization. Dr. Yi gave a big thank-you to his supervisor, Prof. Geoffrey Shen of BRE for his guidance and support, in particular, the recommendation for this remarkable achievement.

BRE PhD Student Winning the Li Po Chun Charitable Trust Fund Scholarship

What a surprise to Schuman!

Ms Schuman Lam, our PhD student received a congratulations email from the Centre STARS of PolyU for winning the 'Li Po Chun Charitable Trust Fund Scholarship 2017/18' during the one-year exchange joint research program at the Politecnico di Torino in Italy. Schuman says, "I was extremely happy since my effort on pursuing this Scholarship did not go in vain. In addition, with the support of the Faculty of Construction and Environment, Prof Edwin Chan, my supervisor, Prof. Albert Chan, Head of BRE, Prof. Ni Meng, Chairman of the Departmental Research Committee and other Committee Members, I was able to create a memorable moment in my life." This Scholarship recognizes the outstanding performance of full-time local currently registered government-funded postgraduate research students.

Schuman gave a big thank-you to all of them and her deepest appreciation to the Donor. In addition, she encouraged our students to take initiatives in active pursuit of their life interests.



Awards & Achievements

BRE PhD Student Receiving OSH Student Research Scholarship



Under the supervision of Prof. Heng Li, our research student, Maxwell Fordjour Antwi-Afari received 'Occupational Safety & Health (OSH) Student Research Scholarship' for the 2017 Academic Year for the project entitled 'Evaluation of Risk Factors for Work-Related Musculoskeletal Disorders (WMSDs) and Fall Injuries in Construction Workers using Wearable Insole Pressure Sensors' by the Hong Kong Occupational Safety & Health Council on 1st March 2018. His winning project aimed to evaluate biomechanical risk factors for WMSDs and non-fatal fall injuries among construction workers using wearable insole pressure sensors. Collectively, the proposed approach used in this research project can serve as an automated risk assessment tool that allows practitioners to take proactive actions to eliminate the fundamental causes of WMSDs and non-fatal falls injuries among construction workers. His current research project is supervised by Prof. Heng Li (Chief Supervisor) and Dr. JoonOh Seo (Co-supervisor) of BRE and Dr. Arnold Y. L. Wong (Co-supervisor) at the Department of Rehabilitation Sciences, PolyU.

2018/19 HK PhD Fellowship Winners

We are glad to name the following winners of the HK PhD Fellowship for 2018/19:

Awardee	Nationality	Chosen Programme	Chief Supervisor
Alex Torku	Ghanaian	Construction and Real Estate Management	Prof. Albert Chan
Ibrahim Yahaya Wuni	Ghanaian	Construction and Real Estate Management / Construction and Real Estate Economics	Prof. Geoffrey Shen



Awards & Achievements

2017/2018 Scholarship Awardees

Department of Building and Real Estate Scholarship for Hall Residents

Programme	Name
BSc (HONS) IN BUILDING ENGINEERING & MGT	WANG Qiancheng
BSc (HONS) IN SURVEYING	CHEUNG Ka Yee WONG Ka Wai WONG Sze Ting

Dr. Ng Tat-lun Memorial Scholarship

Programme	Name
BSc (HONS) IN SURVEYING	CHUI Yuen Sum

Dr. Y.K. Ching Memorial Scholarship

Programme	Name
BSc (HONS) IN BUILDING ENGINEERING & MGT	GUO Hansen
BSc (HONS) IN PROPERTY MANAGEMENT	HONG Xinyue
BSc (HONS) IN SURVEYING	LIU Jiaxin
HD IN BUILDING TECHNOLOGY AND MANAGEMENT (SURVEYING)	TSE Yan Chun

Entry Scholarship for the Postgraduate Scheme in Construction and Environment

Programme	Name
MSc IN CONSTRUCTION & REAL ESTATE	TSANG Yip Kwong
MSc IN CONSTRUCTION LAW & DISPUTE RESOLUTION	CHAN Wing Shan TANG Shung Huen
MSc IN PROJECT MANAGEMENT	POON Shing WONG Kam Yuen Tony

FCE Outbound Exchange Scholarship

Programme	Name
BSc (HONS) IN BUILDING ENGINEERING & MGT	LIM Yunji WONG Hiu Yuk YE Yang YEUNG Hoi Ching Catherine YU Pui Sze
BSc (HONS) IN PROPERTY MANAGEMENT	CHAN Kenneth Chi Chin LAI Sze Wing LAM Ying Hung MA Hok Leung SO Ka Wing
BSc (HONS) IN SURVEYING	CHAN Chun Ho CHAN Kam Wing CHEUNG Siu Kei CHONG Man Yui CHOW Tak Yi CHOW Yuk Wah Wallace IP Yiu Shing LAU Matthew Kin Hay LEE Wing Hei LEUNG Ka Ki LIEW Yi Tak MA Ka Chun NG Ka Lam NGAN Yee Lam WONG Chun Pong WONG Yan Yi YUEN Wai Pong

Fung Scholarship

Programme	Name
BSc (HONS) IN SURVEYING	LEUNG Ka Ki

HKSAR Government Scholarship

Programme	Name
BSc (HONS) IN BUILDING ENGINEERING & MGT	LEE Hoi Ki WONG Sze Yu Dolphin
BSc (HONS) IN PROPERTY MANAGEMENT	LEUNG Chun Yin
BSc (HONS) IN SURVEYING	CHAN Wing Sum CHENG Ka Tsun CHUI Yuen Sum HO Cheuk Wun KO Yee Man KU Tin Tsan LEUNG Ka Kit SZETO Wai Pong TSANG King Fai WONG Ching Virginia
HD IN BUILDING TECHNOLOGY AND MANAGEMENT (SURVEYING)	TANG Tin Hang YUNG Tsun Kiu

HKSAR Government Scholarship Fund - Endeavour Merit Award

Programme	Name
BSc (HONS) IN SURVEYING	WONG Sze Ting

HSBC Hong Kong Scholarship

Programme	Name
BSc (HONS) IN SURVEYING	KO Yee Man

Mr Mike Wong, JP, Real Estate Marketing Scholarship

Programme	Name
BSc (HONS) IN PROPERTY MANAGEMENT	LEUNG Chun Yin
BSc (HONS) IN SURVEYING	LAU Nga Yi

Ng Wing Hong Entry Scholarship

Programme	Name
BSc (HONS) IN BUILDING ENGINEERING & MGT	CHEN Ho Ying WONG Wing Sze
BSc (HONS) IN PROPERTY MANAGEMENT	CHAN Yuk Sin YAU Hiu Lam
BSc (HONS) IN SURVEYING	LUNG Hei WONG Tsz Yuet

Outstanding Student Award 2017, Department of Building and Real Estate

Programme	Name
BSc (HONS) IN SURVEYING	CHENG Ka Tsun

PolyU - University Fellows Association Scholarship for Outstanding PolyU Student Athletes

Programme	Name
BSc (HONS) IN BUILDING ENGINEERING & MGT	KWOK Yin Chun
BSc (HONS) IN PROPERTY MANAGEMENT	KWAN Tsz Lok



Awards & Achievements

PolyU Community Service Fund Service - Learning Scholarship

Programme	Name
BSc (HONS) IN PROPERTY MANAGEMENT	FOK Pui Lam
BSc (HONS) IN SURVEYING	CHAU Ho Lam FUNG Sin Yee

Prof. Francis S.K. Lau Scholarship

Programme	Name
BSc (HONS) IN SURVEYING	CHENG Ka Tsun LEUNG Ka Ki NG Chun Fung NG Ka Kit PENG Yingying

Prof. Francis S.K. Lau Scholarship (2013)

Programme	Name
BSc (HONS) IN SURVEYING	CHAN King Lam CHAN Wing Sum LAM Ching Ning NG Wing Lam SZETO Wai Pong TSOI Suet Nam

Prof. Francis S.K. Lau Service-Learning Scholarship

Programme	Name
BSc (HONS) IN SURVEYING	IP Nga Yee

RICS (Hong Kong) Scholarship

Programme	Name
BSc (HONS) IN PROPERTY MANAGEMENT	LAI Sze Wing
BSc (HONS) IN SURVEYING	CHAN Wing Sum TSOI Ting Westing

The City Lions Club of Hong Kong Scholarship

Programme	Name
HD IN BUILDING TECHNOLOGY AND MANAGEMENT (SURVEYING)	CHAN Kin Chi

The Hong Kong Polytechnic University Entry Scholarship (Academic)

Programme	Name
BSc (HONS) IN SURVEYING	LAM Ching Ning LEUNG Choi Yan WAN Hoi Yik

The Hong Kong Polytechnic University Entry Scholarship (Academic) and Faculty of Construction and Environment Undergraduate Scholarship

Programme	Name
BSc (HONS) IN BUILDING ENGINEERING & MGT	TURSYNGALI Sungkar ZHUNISSOVA Aiym

The Hong Kong Polytechnic University Entry Scholarship (Non-Academic)

Programme	Name
BSc (HONS) IN PROPERTY MANAGEMENT	LAU Mei Wa WONG Wing Tung
BSc (HONS) IN SURVEYING	CHAN Tsz Ho KAN Tsz Yiu KWOK Ka Fai LAI Tsun Sing LEE Tsz Ting LI Long Yin SHUEN Chun Kit WONG Kwan Ting WONG Oi Wun
HD IN BUILDING TECHNOLOGY AND MANAGEMENT (SURVEYING)	CHU Pak Chung LEE Hong Kit

The Hong Kong Polytechnic University-APEC Entry Scholarship

Programme	Name
BSc (HONS) IN PROPERTY MANAGEMENT	DITHISWATVATE Chariya

The Society of Builders, Hong Kong Scholarship

Programme	Name
BSc (HONS) IN BUILDING ENGINEERING & MGT	WONG Sze Yu Dolphin

Yee Sui Cheong Memorial Scholarship

Programme	Name
HD IN BUILDING TECHNOLOGY AND MANAGEMENT (SURVEYING)	CHAN Kin Chi

Zhong Hua Construction Foundation Scholarship (2013)

Programme	Name
BSc (HONS) IN SURVEYING	HO Cheuk Wun HO Lok Yiu IP Ling TSE Yuen Keung TSOI Ting Westing WONG Wai Shan

The Hong Kong Institute of Surveyors (HKIS) Quantity Surveying Division (QSD) Scholarship 2017/2018

Company	Programme	Name
Arcadis Hong Kong Limited Scholarship	HD IN BUILDING TECHNOLOGY AND MANAGEMENT (SURVEYING)	WONG Kwun Wang
Hesed Consultants Limited Scholarship	BSc (HONS) IN SURVEYING	PANG Tsz Fung
MJ Consultants Limited Scholarship	HD IN BUILDING TECHNOLOGY AND MANAGEMENT (SURVEYING)	WU Chun Ho
Northcraft Hong Kong Limited Scholarship	HD IN BUILDING TECHNOLOGY AND MANAGEMENT (SURVEYING)	LAU Kelly Bik Yu
Rider Levett Bucknall Limited Scholarship	BSc (HONS) IN SURVEYING	CHAN Wing Sum
WT Partnership (HK) Limited Scholarship	BSc (HONS) IN SURVEYING	TSOI Ting Westing



People

Change in BRE Management



Dr. Patrick Fong, Associate Professor, will step down from the role of Associate Head (Partnership) on 1st July 2018. Over the past four years, to meet the strategic objectives, Dr. Fong led the Partnership Team to realize many wonderful ideas and take new initiatives in marketing, student development and forming bonds with our stakeholders. A heartfelt **THANKS** goes to Dr. Fong for making this marvellous journey possible. We wish Dr. Fong every success in wearing his new hat, 'Award Co-ordinator of the BSc (Hons) Programme in Surveying'.

A warm welcome is heartily extended to **Prof. Eddie Hui**, MH for joining the Partnership Team as Associate Head (Partnership)! Prof. Hui will take a pivotal role in our aspiration to advance the Department's frontiers. We are confident that Prof. Hui's wealth of wisdom and expertise can inspire the Partnership Team to navigate towards new levels of achievement in the areas of knowledge transfer and global partnership with our stakeholders. The 'passion' displayed by the Team, motivating its practical endeavours, is the key to scaling new heights.

Outstanding BRE Alumni Talks on 'Happy Retirement'

Many thanks for Ir Peter Mok Kwok Woo's sharing on 'Happy Retirement 退休與養生'. After retirement, Peter, one of the awardees of the 'Outstanding BRE Alumni Award' for 2012, unfolded a new adventure of joy and wonders. On 2nd March 2018, giving a new definition to 'Retirement', Peter's inspiring talk with his strong sense of humor fascinated the participants. Besides, the participants who were mainly students and alumni of the Institute of Active Ageing of PolyU, received free copies of Peter's book '退而不憂 - 快樂的老年' as a souvenir, after the talk. We hope all enjoyed a fruitful afternoon with us.

We value every alumnus and look forward to his/her involvement in different ways in future. Special thanks are also due to the Institute of Active Ageing of PolyU!



More about Peter



People

Outstanding BRE Student

Anson CHENG Ka Tsun

Year 4 Student

BSc (Hons) in Surveying Programme

Anson Cheng says, "It is my great honour to be an Outstanding Student of the Department of Building and Real Estate. I would like to take express my sincere gratitude to my department and PolyU for providing me with numerous opportunities and support in my university life."

One of Anson's memorable experiences was the academic exchange to Sweden during his last summer semester. During the 6-week exchange trip, he had the precious opportunity to work with 25 foreign university students and took part in meaningful discussions on the cultures and societies in Sweden. This has provided Anson with great insights to broaden his mind-set and nurture his development as global citizen able to communicate freely and efficiently and be ready to work under any international context.

Anson adds, "I plan to work for an international quantity surveying consultancy firm after graduation from BSc (Hons) in Surveying Programme of PolyU."



People

Graduating Class Ambassadors

To appoint enthusiastic full-time final-year degree and sub-degree students as Ambassadors of the PolyU Graduate Class Ambassador Scheme, Prof. Timothy Tong, the PolyU President was invited to officiate at the Swearing-In Ceremony on campus on 23rd March 2018. It was with great excitement that our students Maria Lau Nga Yi and Jimmy Tsang King Fai from the Surveying Programme; Marco Leung Chun Yin and Natalie Tsang Nok Hei from the Property Management Programme; as well as Esther Chung Ka Sin and Dolphin Wong Sze Yu from the Building Engineering and Management Programme were awarded this honour at the Ceremony. We are confident that this group of outstanding and energetic young men and women will wave their magic wands to encourage their fellow students to stay connected with PolyU and BRE after graduation.



Sharing :

Maria shared, "Jimmy and I are genuinely honored to be appointed as Graduating Class Ambassadors for the Class of 2018. We were also proud to be the joint Master of Ceremonies at the swearing-in ceremony. On behalf of the class, we would like to extend our heartiest gratitude to all the teachers and supporting staff who have provided their unfailing guidance and generous support throughout our undergraduate journey. BRE has prepared and empowered us to become surveyors of integrity and professionalism over the years. In the days ahead, we aim at gathering together our fellow graduating class members so as to stay connected with the University and of course the BRE Department."

Sharing :

"It is certainly my pleasure to be elected as the Graduating Class Ambassador for the class of 2018. It offers us opportunities to make new friends and renew old acquaintances. The Scheme provides a link to connect students and alumni so that we can learn from their experiences. I am honoured to be one of the representatives of BRE. In future, cooperating with other Ambassadors, we shall work together to act as a bridge of communication between PolyU and the graduating classes." says Natalie.



People

Sharing by a visiting PhD student

Sara Cravero is currently a visiting PhD student in BRE, a graduate of the Master Programme in 'Architecture Construction and City' at the Politecnico of Torino (Polito) in Italy. Arriving in Hong Kong in early February, Sara is working on a Joint Project Research involving top Universities, a specific research programme established between BRE in PolyU and the Interuniversity Department of Regional and Urban Studies and Planning (DIST) at Polito. She is collaborating specifically with her supervisors, Prof. Edwin Chan of BRE and Prof. P. Lombardi, Deputy Rector of Polito. Sara's research focus is on 'Enhancing User Perspectives in the Development and Management of Smart Cities & Communities'. The main purpose of her research is to experiment with new evaluation tools, in particular, the 'Serious Game' (SG), in order to investigate and understand the needs of city users as input to the planning of smart city initiatives. In Hong Kong she has the opportunity to attend courses and participate in those lecture events and seminars organized by PolyU, which are directly applicable to her research.



People

Sharing by Mentors & Mentees

Mr. Tsui Siu Lung James (Mentor) & his mentee, Miss Lai Mei Kwan Amy

James said, "From the view of an experienced professional, I totally understand that students feel so confused and helpless when learning, so BRE Mentorship Programme can make them better know more about surveying which helps their studies and take better control of their future career development. As a mentor, I always share my experiences, concrete advice and communicate with my mentees to learn from each other and grow together. Equipping my mentees with confidence to advance on the road ahead and improving their interpersonal relationship, communication skills, leadership and time management for their studies enhanced my sense of self-worth. I encourage more students to join this programme that trains them to become talents in future."



Amy shared, "What can be imagined, can be achieved! Sr Tsui Siu Lung, James is not just my mentor, but also my friend and my model in life. Every time we meet, I learnt about new technologies and can be more familiar with the surveying industry. Surprisingly, I knew James before the matching by Department. He was one of the coach in a well-known youth organization. He is always willing to teach the younger. I highly appreciate this mentorship programme giving me such a precious opportunity. And I would like to express my great thank-you to my mentor, James Tsui!"

Dr. Leung Hai Ming Raymond (Mentor) & his mentee, Miss Chen Ho Ying

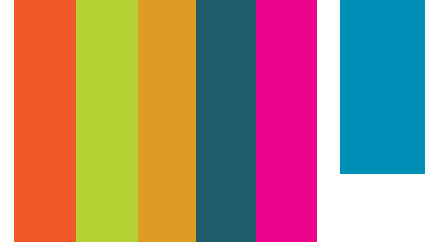


Raymond emphasized, "Mentorship Programme is the best exchange platform between mentors and students. It provides close contact and can answer questions that had troubled the mentees. Mentors can provide directions for the mentees to make decisions on their future. In my early days, Mentorship Programme was not available and many solutions need to be explored through hard life experience. Mentorship Programme can provide a short cut for the mentees to find these solutions. Hard work and continuous learning can help one to achieve new heights. It is important for the mentees to have the initiative to stay in touch with their mentors. Mentor is here to help. He or She can be your life-long advisor."

Ho Ying said, "I have joined the Mentorship Programme to gain more information about the subject I studying and let me have a clear direction of what I will do in the future. The mentor shares his working experience in the construction company. I can also improve my interpersonal skills with the others and have a better network with the organization."



—Special Column—

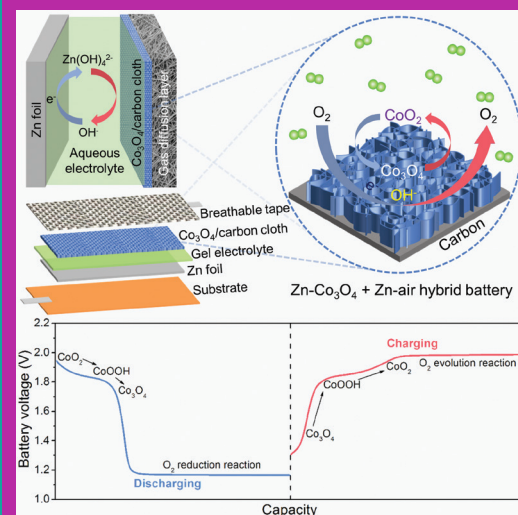


Flexible and rechargeable Zn-air batteries for future wearable and flexible electronics

Prof. Meng Ni is leading a team working on flexible and rechargeable Zn-air batteries for wearable and flexible electronics.

Wearable and flexible electronic devices are advancing rapidly and have many applications, such as rollup displays and wearable sensors. In particular, wearable sensors can be incorporated into textile and fashion design to develop smart clothing for activity tracking, health monitoring, and military use [1,2]. To power the wearable or flexible electronic devices, flexible rechargeable batteries with high power and energy densities are in high demand [3]. Compared with the currently popular Li-based batteries, Zn-air batteries are safe, cheap and more environment-friendly. However, the development of rechargeable Zn-air batteries is still at an early stage, due to a number of technical hurdles, such as low discharge voltage (usually $< 1.4\text{V}$), low energy efficiency (i.e. $< 60\%$), and poor durability.

Recently, **Dr. Peng Tan**, a post-doc in Prof. Meng Ni's team, developed hybrid Zn-air batteries by integrating a Zn-air battery with a Zn- Co_3O_4 battery, in collaboration with Curtin University and Georgia Institute of Technology. The newly developed hybrid battery demonstrated higher efficiency ($>70\%$), higher discharge voltage ($>1.7\text{V}$) and a high capacity of 800 Ah/kg (Zn) . In addition, the hybrid battery demonstrated stability over 200 charge-discharge cycles. Based on gel electrolyte, flexible batteries were fabricated. The flexible batteries demonstrated good and stable performance even when the battery was bent and twisted. Please scan the QR code to watch the short video on the flexible batteries. This research work has been accepted for publication in an academic journal – *Small* [4].



References

- [1] John A Rogers, Takao Someya, Yonggang Huang, [Materials and mechanics for stretchable electronics](#), *Science* 327 (2010) 1603-1607.
- [2] Hiroyuki Nishide, Kenichi Oyaizu, [Towards flexible batteries](#), *Science* 319 (2008) 737-738.
- [3] **Peng Tan**, Bin Chen, Haoran Xu, Houcheng Zhang, Weizi Cai, **Meng Ni**, Meilin Liu, Zongping Shao, [Flexible Zn- and Li-air batteries: recent advances, challenges, and future perspectives](#), *Energy and Environmental Science* 10 (2017) 2056-2080.
- [4] **Peng Tan**, Bin Chen, Haoran Xu, Weizi Cai, Wei He, Meilin Liu, Zongping Shao, **Meng Ni**, [Co₃O₄ nanosheets as active material for hybrid Zn batteries with high working voltage, capacity, and cycling stability](#), accepted for publication in *Small*.



Upcoming

PolyU Summer Programme 11th July 2018

In support of the 'PolyU Summer Programme', on 11th July, 2018, BRE will be organizing a host of activities for students of secondary schools to gain a brief picture of the construction and real estate industry in Hong Kong, together with information on our Department and well-known undergraduate programmes.



PolyU Info Day 6th October 2018

Save the Date! For secondary school students to gain a clear understanding of undergraduate programmes and a feel for life at PolyU, this year's PolyU Education Info Day is scheduled for 6th October (Saturday). More details will be ready on our website soon.



CIB World Building Congress 2019 17th – 21st June 2019

CIB
World Building Congress
2019 'Constructing
Smart Cities'



The 'CIB World Building Congress 2019' (CIB WBC 2019) will be held in Hong Kong from 17th to 21st June 2019. The Congress is jointly hosted by the International Council for Research and Innovation in Building and Construction (CIB) and the

More:



Hong Kong Polytechnic University's Department of Building and Real Estate (BRE).

Led by the theme 'Constructing Smart Cities', the CIB WBC 2019 will provide a platform to explore smart city development and its role in society. Building and construction industry specialists, researchers, and policymakers will convene in Hong Kong for the 5-day World Building Congress. Local, regional and internationally renowned industry specialists will deliver keynote talks, case studies and dynamic presentations to reveal the latest smart building, construction and infrastructure trends, practices and developments.



Giving

We continue more than ever to pursue excellence through our innovative education, application-oriented research and strong global connections.

Your generosity will certainly have a positive and profound impact on the development of our Department and the growth of our students. With your giving, we will build on our strengths to transcend boundaries, in the hope of being an ideal place for advancing knowledge and inspiring our students, tomorrow's leaders, to succeed in building a sustainable city.

Purpose of Donation:		
<input type="checkbox"/> BRE Development	<input type="checkbox"/> Research	<input type="checkbox"/> Bursary
<input type="checkbox"/> Student Development	<input type="checkbox"/> Scholarship	<input type="checkbox"/> Others (please specify: _____)
Amount of Donation: HK\$		
Type of Donor:		
<input type="checkbox"/> Individual		<input type="checkbox"/> Organization
Name of Donor: *Ir/Prof./Sr/Dr/Mr/Mrs/Ms/Miss (English) (Chinese)		Name of Contact Person: *Ir/Prof./Sr/Dr/Mr/Mrs/Ms/Miss (English) (Chinese)
Contact No.:	Fax:	Email Address:
Correspondence Address:		
(For alumni only)		
Year of Graduation:		Programme:

You can make your donation by printing and sending the above form to The Department of Building and Real Estate, ZS725, South Tower, 7/F, Block Z, The Hong Kong Polytechnic University (by post), bspromo@polyu.edu.hk (by email) or (852) 2764 5131 (by fax). The information you provide will be used in connection with this appeal only. To find out more, please contact us at 2766 5815.

To unlock more opportunities for the future, we look forward to receiving your donation.



Contact Us

Correspondence address:

Department of Building and Real Estate
ZS725, South Tower, 7/F, Block Z
The Hong Kong Polytechnic University

Telephone: (852) 2766 5815 / 3400 3867

Fax: (852) 2764 5131

Email: bspromo@polyu.edu.hk

Website: <http://www.bre.polyu.edu.hk>

Head of Department

Ir Prof. Albert P.C. CHAN
albert.chan@polyu.edu.hk

Associate Heads of Department

Dr. Daniel W.M. CHAN
(Teaching)
daniel.w.m.chan@polyu.edu.hk

Dr. Patrick S.W. FONG
(Partnership)
patrick.fong.bre@polyu.edu.hk

Prof. Eddie C.M. HUI, MH
(Partnership)
eddie.hui@polyu.edu.hk
(with effect from : 1st July 2018)

Prof. Meng NI
(Research)
meng.ni@polyu.edu.hk

