



THE HONG KONG
POLYTECHNIC UNIVERSITY
香港理工大學

POLYU

JUPAS Admission

2022 ENTRY

*Introducing new arrangements on
UG admissions and curriculum*



What's new in our curriculum?

Departmental Scheme-based Admission

What is it?

When you apply to PolyU, you will first select a scheme from a department. Upon enrolling to the University, you only need to undertake the common courses of the department in your 1st academic year. You will then select your Major in the 2nd academic year (unless specified otherwise by the scheme concerned).

Why is it good for me?

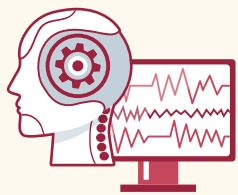
Under the departmental scheme-based admission, you are able to explore where your interests and aspirations lie in your 1st year of study before selecting the Major of study*. This provides you with more flexible study options to consider and hence, develop your diverse capabilities to meet future societal needs.

* Screening criteria are set by 9 schemes (out of total 31 schemes) for Year 1 students to select major/specialism.



2 New Elements

of our UG programmes



Artificial Intelligence
and Data Analytics
(AIDA)



Innovation and
Entrepreneurship
(IE)

Why are AIDA and IE important to me?

Given the emergence of Industry 4.0 as a key trend that is shaping the future, you not only need to gain solid academic knowledge, but also master the skills on innovation and technology and possess an entrepreneurial spirit in order to be highly competitive in the contemporary society.

Who should study AIDA and IE?

All students

Study as mandatory components of General University Requirements
(total 3 credits)

Interested students



Study AIDA or IE as a
Minor (total 18 credits)



Study as a Secondary Major (total 36 credits)
i.e. "Your major (1st major) + AIDA" or
"Your major (1st major) + IE"



AIDA subjects

- ✓ Artificial Intelligence
- ✓ Programming
- ✓ Machine Learning

IE subjects

- ✓ Company Attachment supported by the Knowledge Transfer and Entrepreneurship Office (KTEO)
- ✓ Greater Bay Area Summer Immersion or Field Study for Innovation Ecosystems

Some examples

To know more...



Brief introduction of
data analytics in the
business world



Stories about
innovation and
entrepreneurship of
our UG graduates



What's more... Grasp every chance to join PolyU!

Flexible Admission Arrangement

If you have one HKDSE subject result falling one level below the general entrance requirements (i.e. 3-3-2-2-3-3), PolyU will give special consideration provided that you:

1. attain a total score of **26 points[#]** or above in the **best five** subjects;
2. have selected our schemes/programmes as **Band A choices** (i.e. first 3 priorities); and
3. pass an **admission interview**.

[#] HKDSE level attainments will be converted to score points where level 5**=8.5, 5*=7, 5=5.5, 4=4, 3=3, 2=2, 1=1 and Unclassified=0

Special Talents Admission Scheme

PolyU embraces students with special talents in sports, arts and culture, community service and leadership, and STEM.

The special talents admission scheme serves as an alternative admission route for students whose exceptional achievements cannot be fully reflected in HKDSE results.

While all applicants to our undergraduate programmes will be automatically considered for this scheme according to the non-academic achievements submitted in the applications, if you are interested in this scheme, you are encouraged to prioritise your PolyU programmes choices. PolyU selection panels will assess these applications and will make result announcement from June onwards.



31 UGC-funded UG Schemes/Programmes Offered by PolyU



Applied Sciences

- JS3010 Biotechnology, Food Safety & Chemical Technology
- JS3020 Data Science
- JS3030 Physics with a Secondary Major in AIDA/IE



Business

- JS3060 Accounting & Finance
- JS3070 Aviation, Maritime & Supply Chain Management
- JS3080 Management & Marketing



Social Sciences

- JS3250 Applied Social Sciences



Construction & Environment

- JS3100 Building & Real Estate
- JS3110 Building Sciences & Engineering
- JS3120 Civil Engineering & Sustainable Development
- JS3130 Land Surveying & Geo-Informatics



Computing

- JS3868 Computing & AI



JS3492 Fashion & Textiles



JS3310 Hotel & Tourism Management



JS3569 Design



Engineering

- JS3140 Aviation Engineering
- JS3150 Biomedical Engineering
- JS3170 Electrical Engineering
- JS3180 Information & AI Engineering
- JS3571 Logistics & Enterprise Engineering
- JS3741 Mechanical Engineering
- JS3557 Product & Industrial Engineering



Health Sciences

- JS3478 Medical Lab Science
- JS3337 Mental Health Nursing
- JS3648 Nursing
- JS3624 Occupational Therapy
- JS3290 Optometry
- JS3636 Physiotherapy
- JS3612 Radiography



Language, Culture & Communication

- JS3240 English & Applied Linguistics
- JS3230 Linguistics & Translation

**Scheme/Programme
Specific Requirements:**



Admissions Figures in 2019-2021



Important Dates

Jun – Aug

Interview period

(Before HKDSE result announcement: 7 – 24 Jun
After HKDSE result announcement: 29 Jul – 2 Aug)

21–23 Jul

Modification of
programme choices

10–11 Aug

Acceptance of
main round offer

1 Jun

Deadline for
updating
programme
choices

20 Jul

Announcement of
HKDSE results

10 Aug

Release of main
round offer results



World Rankings

Why PolyU?



66th

QS World University
Rankings (2022)

25th

QS Asia University
Rankings (2022)

6th

QS Top 50
Under 50 (2021)



91st

Times Higher Education
World University
Rankings (2022)

23rd

Times Higher Education
Asia University
Rankings (2021)

5th

Times Higher Education
Young University
Rankings (2022)



Student Stories



Campus Life

Contact Us Email: ar.ug@polyu.edu.hk | Enquiry Hotline: 2333 0600