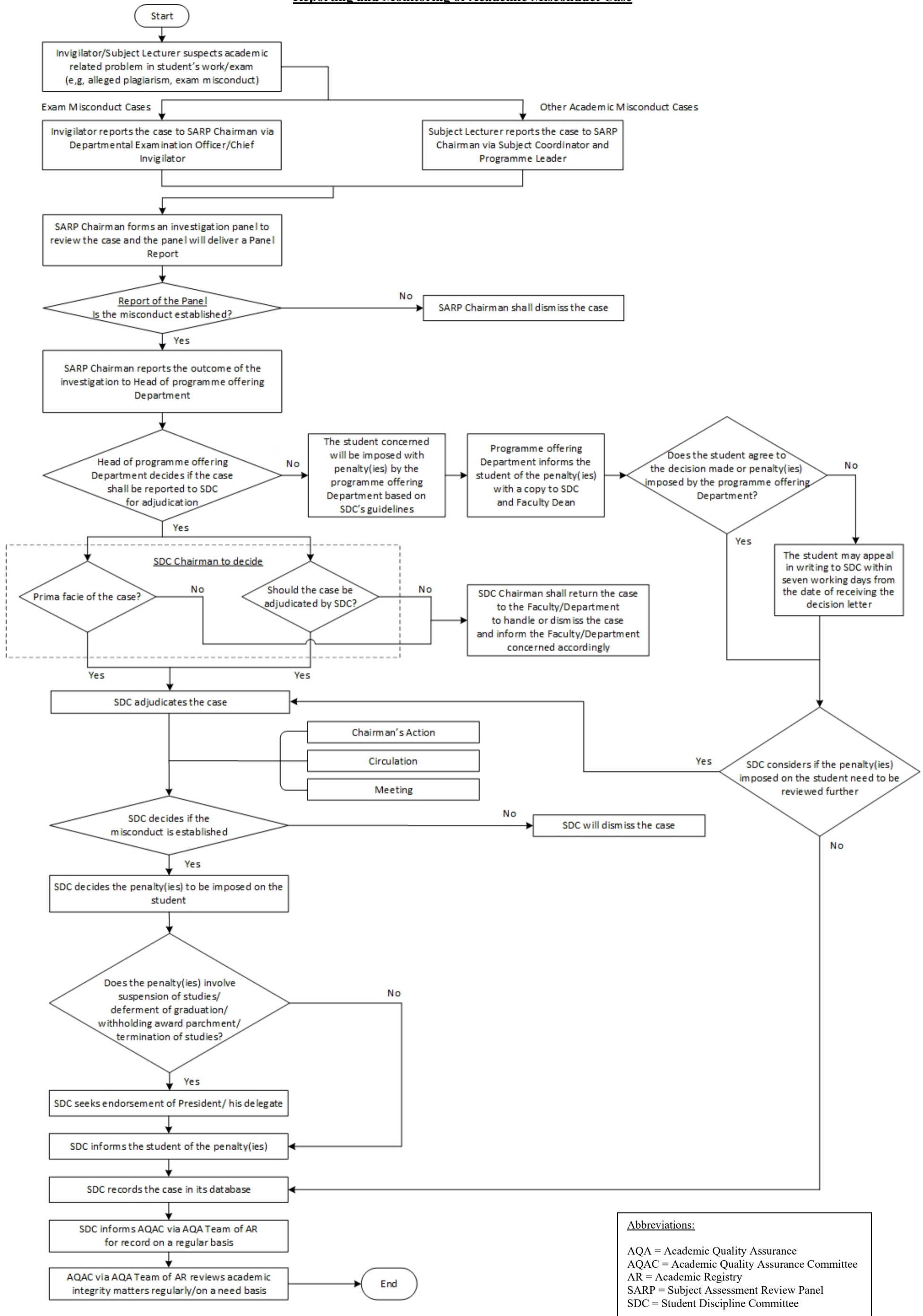


Reporting and Monitoring of Academic Misconduct Case



Abbreviations:
 AQA = Academic Quality Assurance
 AQAC = Academic Quality Assurance Committee
 AR = Academic Registry
 SARP = Subject Assessment Review Panel
 SDC = Student Discipline Committee

- Note 1: Academic misconduct cases involving research postgraduate students should be referred to SDC for consideration via the Graduate School Board (GSB), as deemed necessary.
- Note 2: Please refer to the website of the College of Professional and Continuing Education (CPCE) for the procedures for handling student academic misconduct cases by CPCE.