

Briefing Session for Fieldwork Arrangement

Sem 1-2 Concurrent placement 2024-25

10 & 11 October 2023

Dr Rita CHEUNG

Fieldwork coordinator





Sem 1-2

Concurrent Placement 2024-25

- Period: 16 September 2024 to 22 March 2025 (27 weeks) (Tentative)
- Wednesday & Thursday
- 4 sessions/ week
- Total 400 hours

Professional Placement

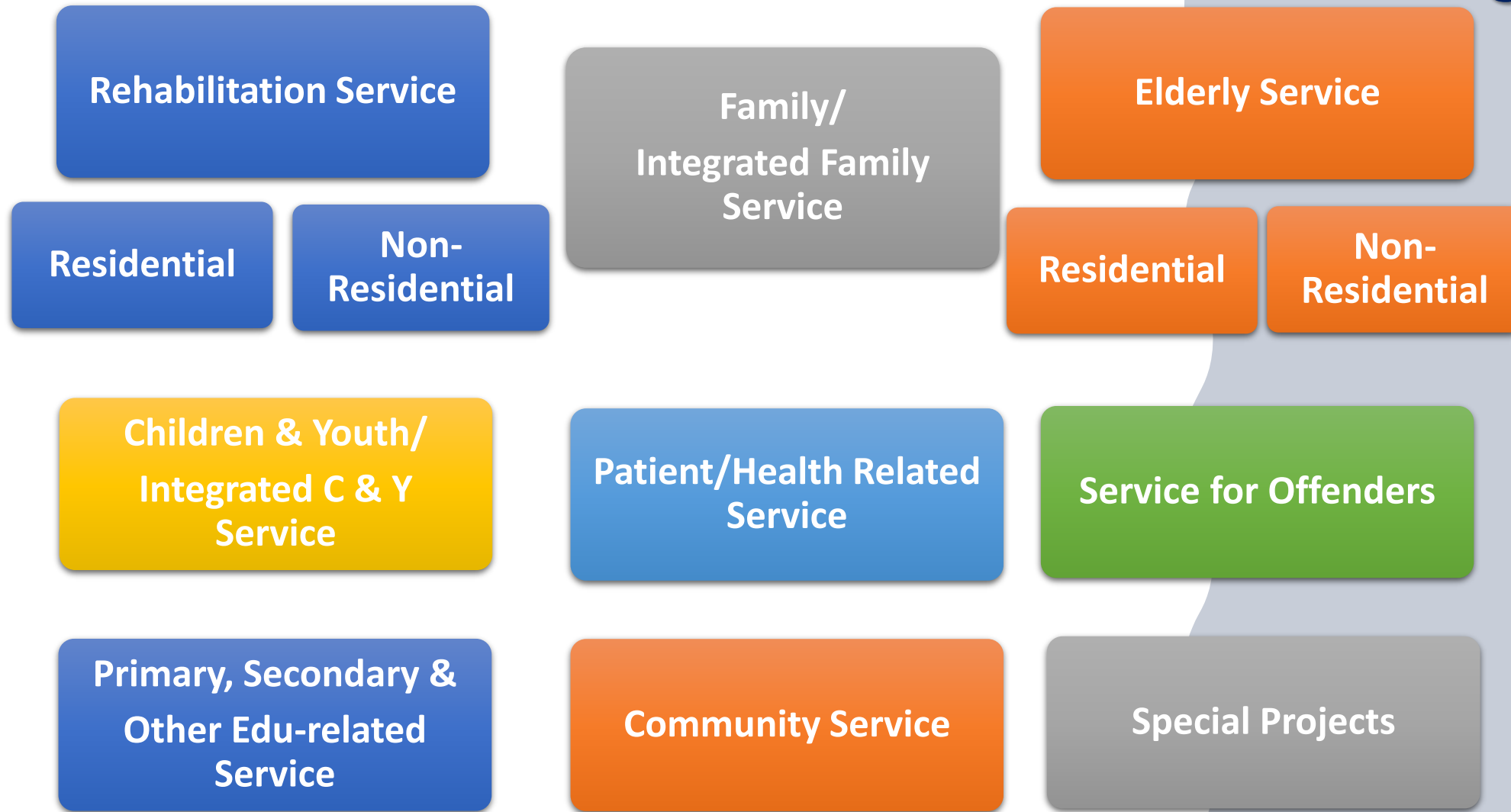


Factors should be considered in choosing a service nature

Factors should be considered in choosing a service nature

- **Personal Interests**
 - In terms of service nature/ working approach.....
- **Future career goals**
 - Relevant placement experience will benefit you when entering the specific field
- **Fill up the learning gap in Foundation placement**
 - e.g., working approaches, like casework/ community development...
- **Learning opportunities vs Reality**
 - The choice of assignments are subject to the final decision of service units
- **Accessibility & convenience**
 - Limited choice of location for some service settings, e.g., medical settings
- **Personal well-being**
 - Balancing meeting challenges and managing workload (coursework + placement)

Introduction of Services



Rehabilitation Services - Targets

Ex-mentally ill persons

Intellectual impaired persons

Visually impaired persons

Physical impaired persons

Hearing impaired persons



Rehabilitation services – Non-residential

Pre-school rehabilitation centre / special schools /
integrated schools/ Parents Resource Centre

Sheltered Workshop/ Integrated vocational
rehabilitation services centre

Day activity centre/ Supported employment

Integrated Community Centre for Mental Wellness
(ICCMW)



Rehabilitation services – Residential

- Hostel
- Supported hostel
- Half-way house
- Care and attention home/ Long stay care home



Elderly Services – Non-residential

- District Elderly Community Centre (DECC)
 - Neighbourhood Elderly Centre (NEC)
 - Day Care Centre for the Elderly (DE)/ Dementia
 - Enhanced Home and Community Care Services (EHCCS)/ Integrated Home Care Service Team (IHCST)
- 

Elderly Services - Residential

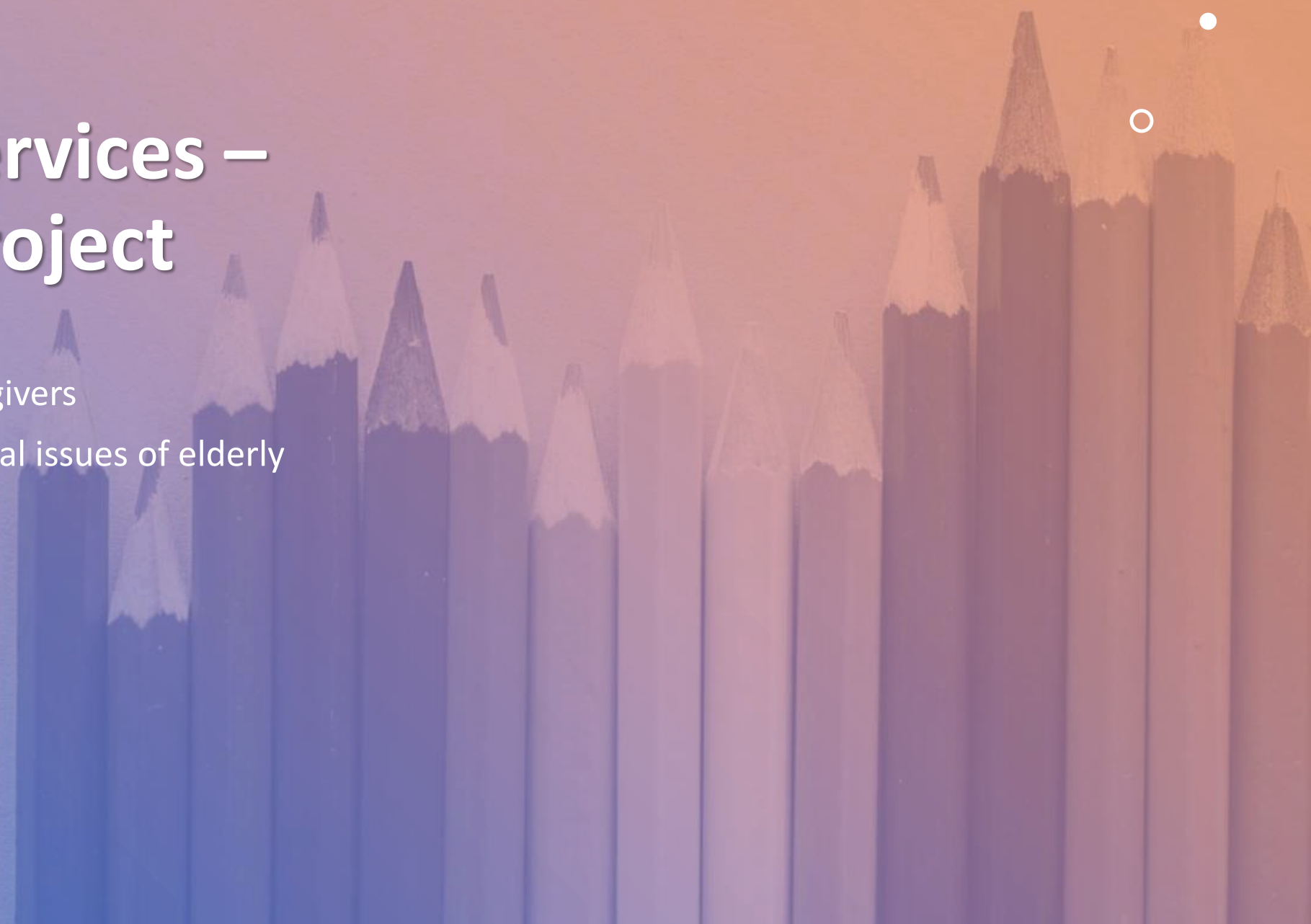


- Conversion Homes for the Elderly
- Care and Attention Homes for the Elderly



Elderly Services – Special project

- CD project for caregivers
- CD Project for special issues of elderly



Children & Youth/ Integrated C & Y Services

Children & Youth /
Integrated Children
& Youth Service
Centre

Outreaching Social
Work Services

Children Homes

Hotline Services for
Youth at Risk

Family/ Integrated Family Services

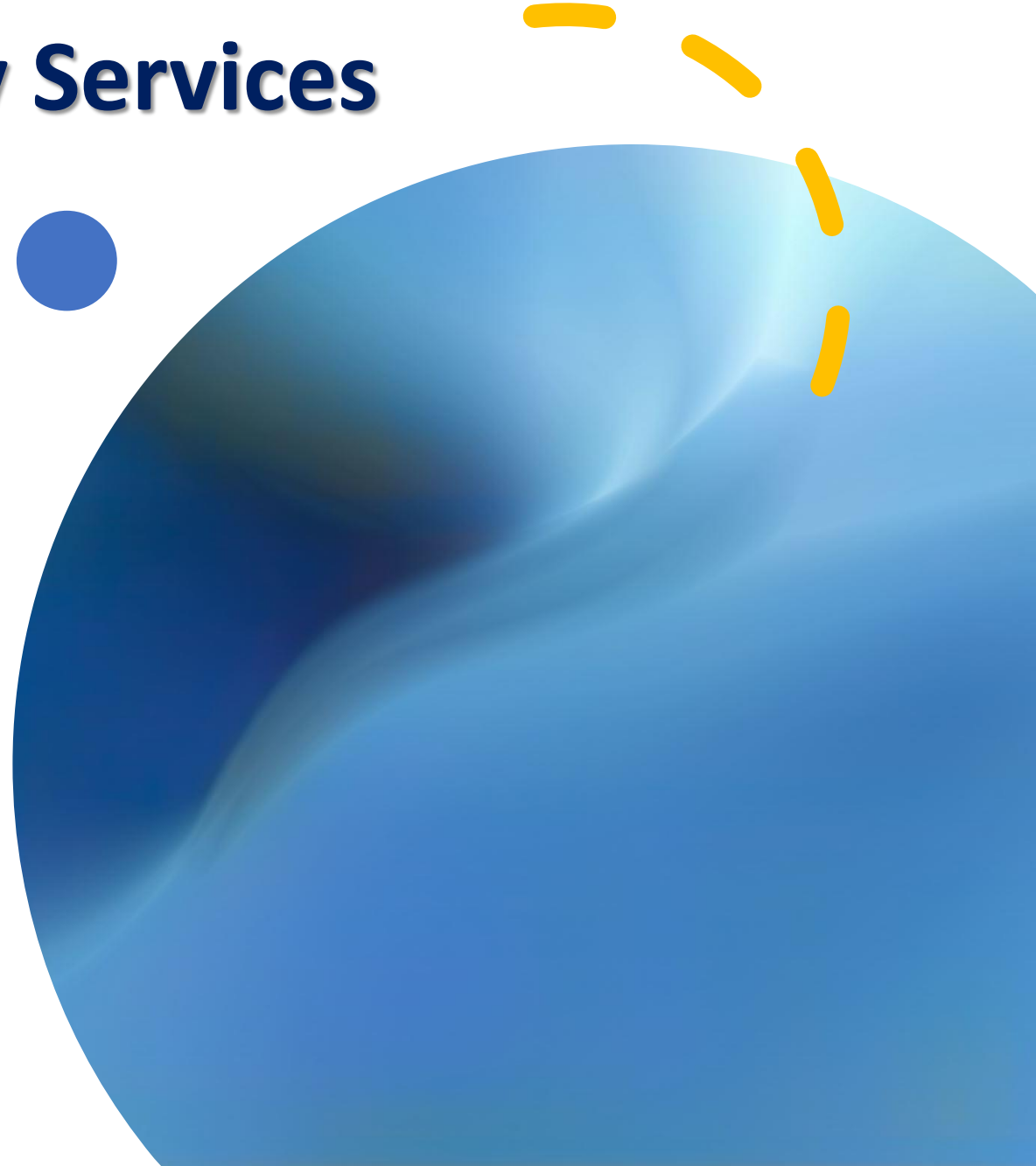
Integrated
Family Services
Centre

Family Crisis and
Support
Centre**

Home for the
Street Sleepers/
Single Persons

Family Resource
Centre/ Family
Life Education

Family Support
Networking
Team



Patient/ Health Related Services

- Medical Social Work Service Unit (MSSU)
- Patients Resource Centre (PRC)
- Integrated Discharge Support Programme (IDSP)
- Patients Self-help group



Service for Offenders

Community Support Service Scheme (CSSS)

Boys' / Girls' Homes

Services for ex-offenders

Homes for drug-addicts

Primary/ Secondary & Other Edu-related Services



Primary School



Secondary School

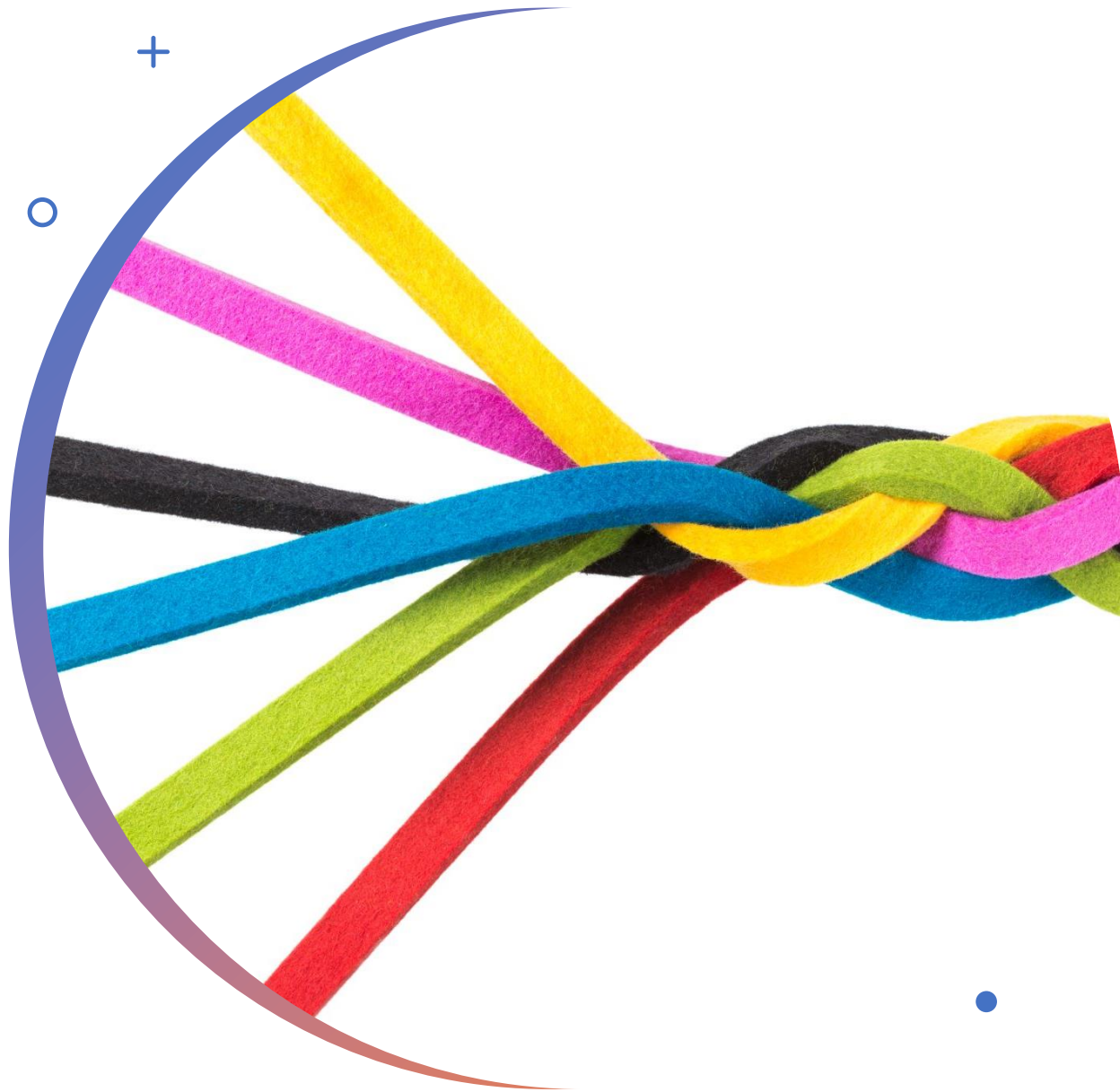


Vocational Training



Special Learning Needs Service

- Special School
- On-site Pre-school Rehabilitation Services (OPRS)



Community Services

- Community Service Centre
- Social Networking Project
- Community Development Project
- Community Organizing/ Advocacy

Special Projects

Counseling Services for Psychotropic Substance Abusers#

On-line Addiction

Online Counselling

Gambling Services

Career Counseling & Employment Services

Suicide Prevention Services

Bereavement Services#


Submit personal particulars

- **Clinical Placement System (CLIPS)**



Clinical Placement System

version: 3.2.1 (build 266-1705)

 Login with NetID

Copyright © 2021 The Hong Kong Polytechnic University

**Submit
personal
particulars**

Clinical Placement System (CLIPS)

Tutorial for Student
Fieldwork Allocation Settings
(BASW FW II / BASW FW III)

Submit
personal
particulars



Resources

Templates for Written Assignments

Reference List for Services

Booking for APSS Functional Zoom Account

Guideline for OneDrive Sharing (for student)

The User Guides / Manuals for CLIPS

The User Guides / Manuals for CLIPS

Fieldwork Placement System (CLIPS) - User Manuals

- Timesheet

CLIPS (Video)

- Fieldwork Allocation Setting - BASW FWI **FWII & III**

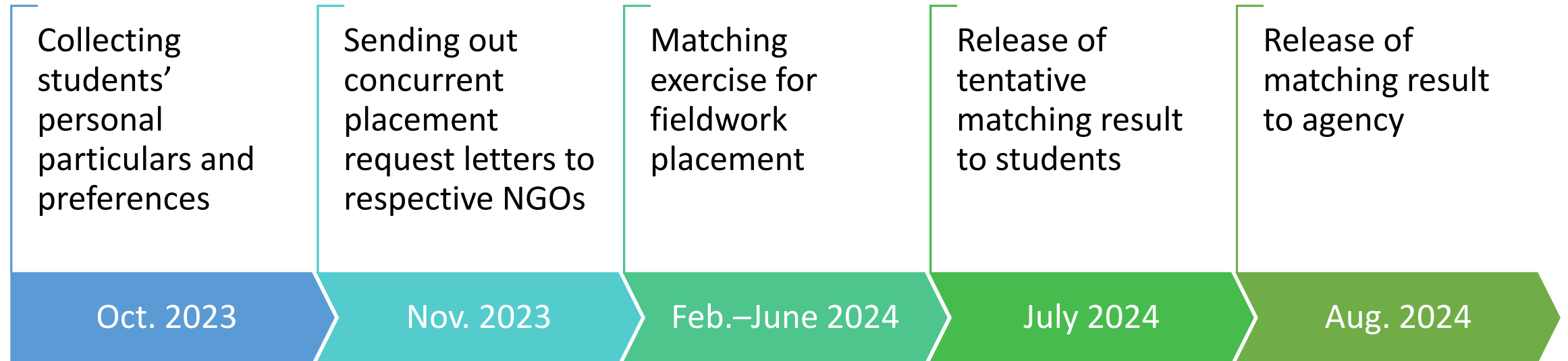
- Fieldwork Allocation Setting - MSW FWI / FWII

- Leave (PDF / Video)

Submit personal particulars

- Students will **not be able to amend** the information once submitted.
- Deadline for submission: **21/10/2023**
- Students should inform the responsible fieldwork coordinator via **EMAIL** for any further changes in preference **AS SOON AS POSSIBLE**.
- **No changes** in the allocation of fieldwork agency will be made if student has changed his/her personal particulars **without informing the fieldwork coordinator or after the announcement of fieldwork placement arrangement.**


Fieldwork Matching Process




- 
- (1) Hong Kong Island**
(Central, Western, Eastern, Southern, Wanchai)
 - (2) Kowloon East**
(Kwun Tong & Tseung Kwan O, Wong Tai Sin, Kowloon City)
 - (3) Kowloon West**
(Yau Tsim Mong, Shamshuipo)
 - (4) New Territories East & North**
(Shatin, Tai Po, NT North)
 - (5) New Territories West**
(Kwai Tsing, Tsuen Wan, Yuen Long, Tuen Mun, Islands)

Location Preference

*** Usually the traveling hour from work/home to fieldwork unit is around one hour.**



Factors for consideration in fieldwork arrangement



-
- **For professional practicum, both preferences and location will be taken into consideration.**
 - Fieldwork placement arrangement will also be based on the availability of fieldwork units, the requirements of agency, the availability of students' placement time, the wide coverage of different service natures, and the development of service trend etc.



Criteria for Matching Exercise

- Previous placement experience
- Special requirements stated by agencies
e.g., maturity, year of study, program of study, gender and religion, RSW etc.
- Recommendation from teachers
- Students' location preference and availability for FW placement



Submission of student particular

Deadline:
on or before 21 Oct 2023

*Matching results will be released around mid of July 2024



About Us



Director's Welcome Message

Events



**Matching Results
Announcement**
Coming Soon



<http://www.polyu.edu.hk/apss/spis/>

Fieldwork Resources
website

Download admin briefing ppt, time sheet, proposal, recording,
reports guidelines here

Contact

FW Coordinator (BASW FWII)



Dr Rita Cheung

Office: EF713

Tel. : 2766-7727

Email : rita.cheung@polyu.edu.hk