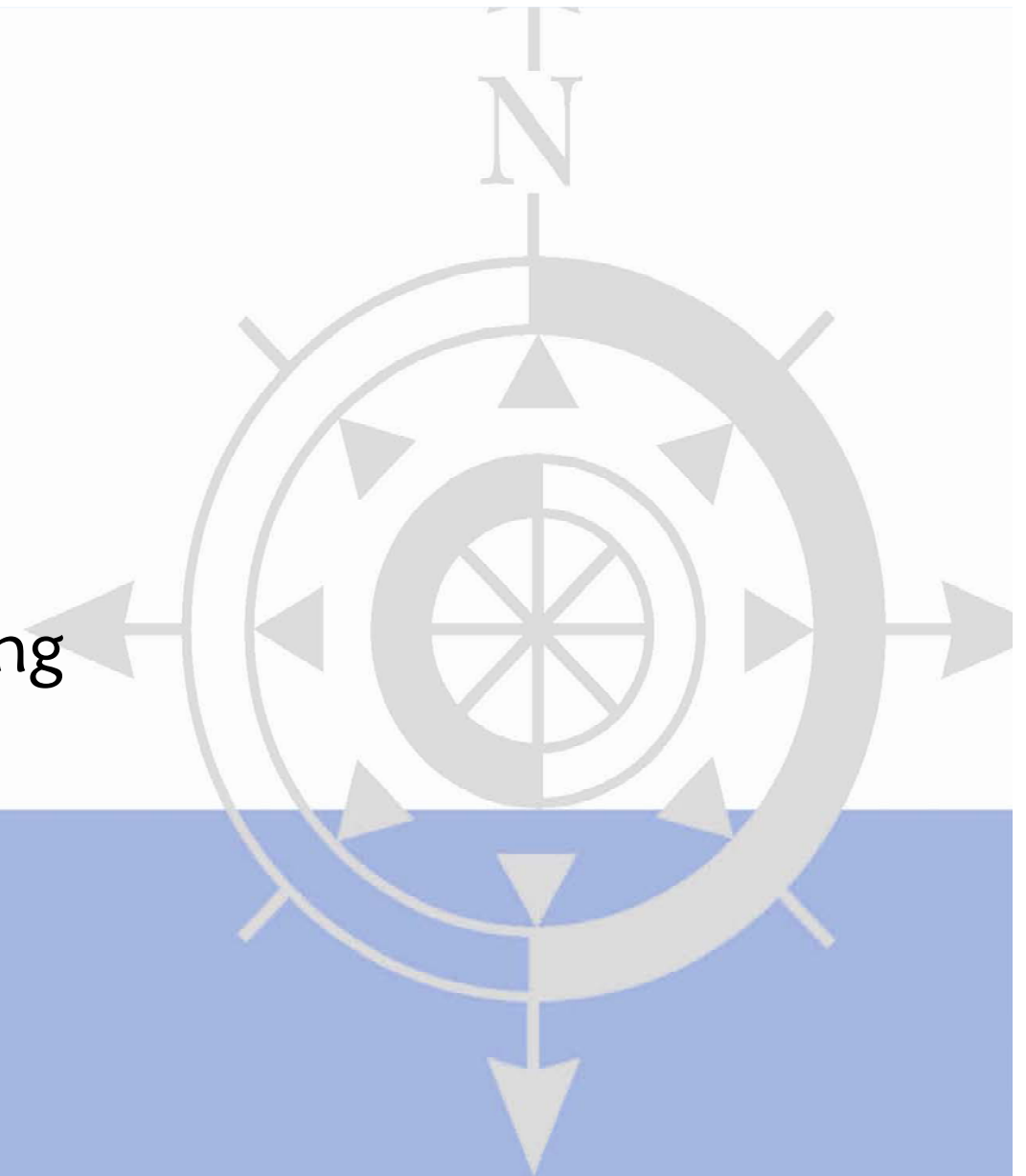


Adventure Education

Adventure-Based Training
Organised by SAO



Objectives of Adventure Education

~ *Improvement of Self-concept*

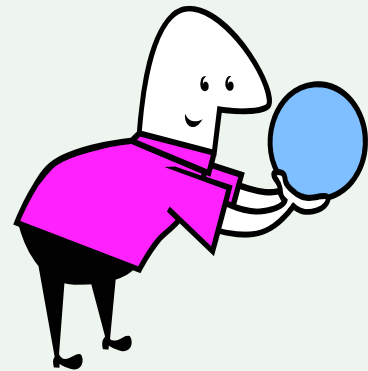
- Trust Building
- Goal Setting
- Challenge / Stress
- Peak Experience
- Humour / Fun
- Problem Solving
- Social Responsibilities

Schoel, Jim, Prouty, Dick & Radcliffe, Paul. (1989)

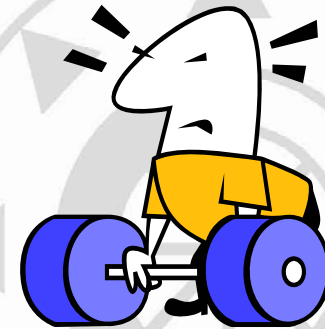
李德誠、麥淑華 (2005)

Experiential Learning Cycle

~ Learning by Doing



Application



Experience



Processing



Reflection

Key elements of Adventure Programme



- A sense of adventure and unpredictability.
- A positive and supportive environment for personal growth.
- A sense of enjoyment and fun.
- Allow intellectual, social, physical, and emotional learning and development.
- Promote personal and group reflection.

Adventure Programme at PolyU

- “Adventure-based Training for Physical and Psychological Wellness” training camps

Coming camps open for application:

Camp	Date	Venue	Training Firm
D	7 - 8 Feb 2009	Fok Ying Tung Hall of Residence, Hong Kong Institute of Vocational Education (Tsing Yi)	Adventure Plus Consultant Limited
E	14 - 15 Feb 2009	Breakthrough Youth Village, Shatin	Training Master International Limited
F	21 - 22 Feb 2009	Breakthrough Youth Village, Shatin	TACT Consulting Limited
G	28 Feb - 1 Mar 2009	Fok Ying Tung Hall of Residence, Hong Kong Institute of Vocational Education (Tsing Yi)	Adventure Plus Consultant Limited

Application

Step 1:

- Apply through web: www.polyu.edu.hk/sams
- You will then receive a notification email confirming your reservation is successful if places are available

Step 2:

- Go to Room ST314 within 2 working days with the following:
 1. PolyU student card
 2. enrolment fees HK\$260 (in cash)
 3. a passport-sized photo
 4. completed undertaking form and health declaration form

Visit www.polyu.edu.hk/sao/lts/abt for details

Application starts on 5 January 2009

Enquiries:

Email: salts@inet.polyu.edu.hk

Tel: 2766 7775 / 2766 6800

