

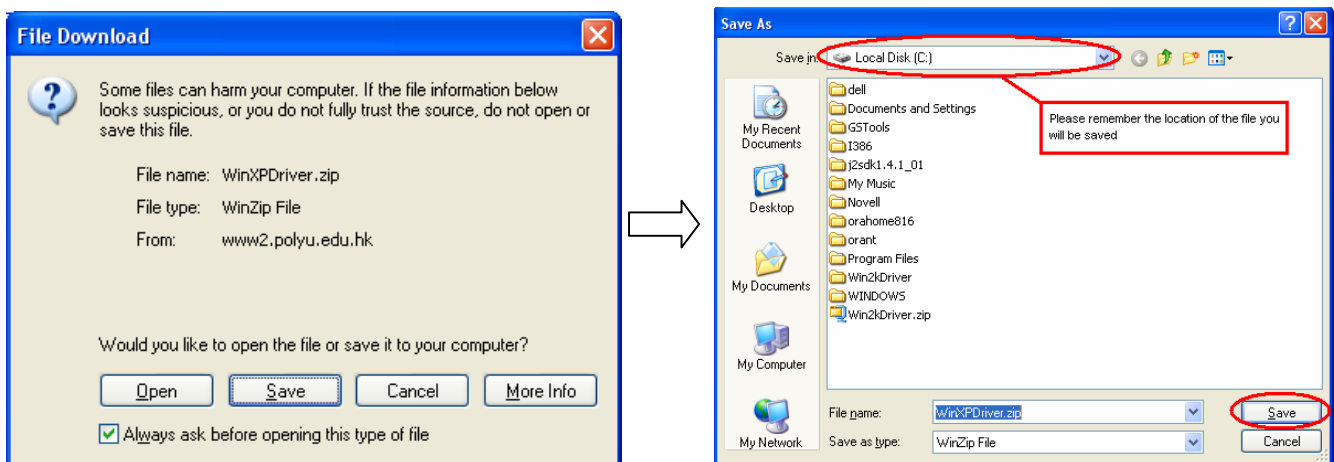
## **OCE Network Copier Driver Installation Procedure for Windows XP**

<b>Part I:</b>	<b>Download OCE network copier driver for Windows XP-----</b>	<b>P.2</b>
<b>Part II:</b>	<b>Add the LPR service on Windows XP-----</b>	<b>P.3 – P.4</b>
<b>Part III:</b>	<b>Prepare and set-up the printer driver -----</b>	<b>P.5 – P.9</b>

## Part I: Download the OCE printer driver for Windows XP

Note: You must get the driver that is suitable for your Operating System (i.e. WinXPDriver.zip)

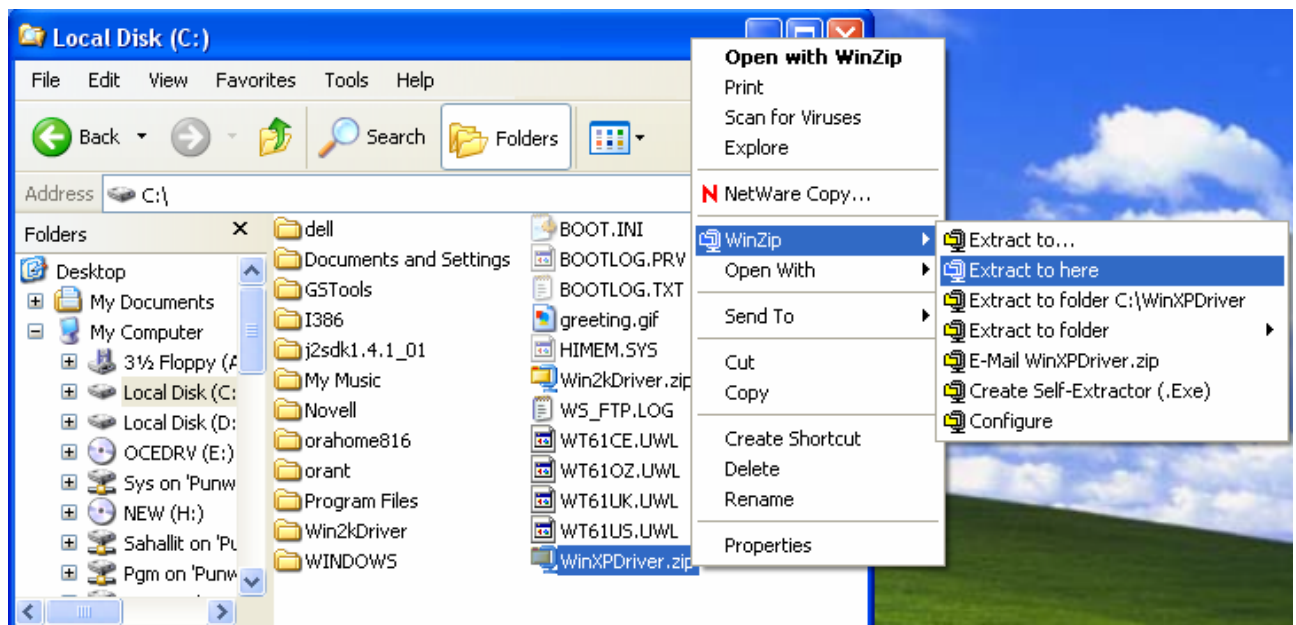
1.1 Please visit [http://www.polyu.edu.hk/hall/others/occe\\_guide.html](http://www.polyu.edu.hk/hall/others/occe_guide.html) and click the **WinXPDriver.zip** to save driver (WinXPDriver.zip) to your local disk (e.g. C :).



1.2.1 After download the **WinXPDriver.zip** file to C directory, you can use your unzip tool (e.g. WinZip tool) to extract it.

1.2.2 By using WinZip tool, right click the **WinXPDriver.zip** and choose “**Extract to here**”.

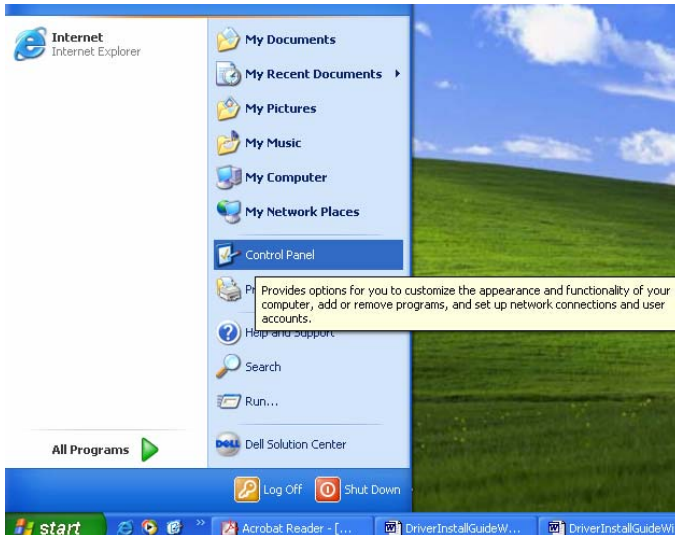
1.2.3 A new folder **WinXPDriver** had created on C directory (or to your current directory).



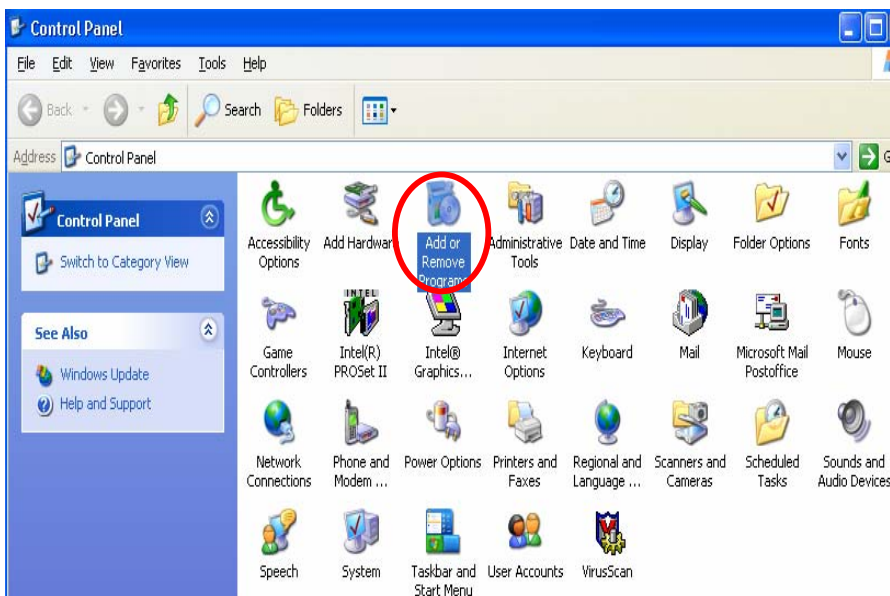
## Part II: Add the LPR service on Windows XP

Before you add the LPR service, you need the Windows XP Installation CD.

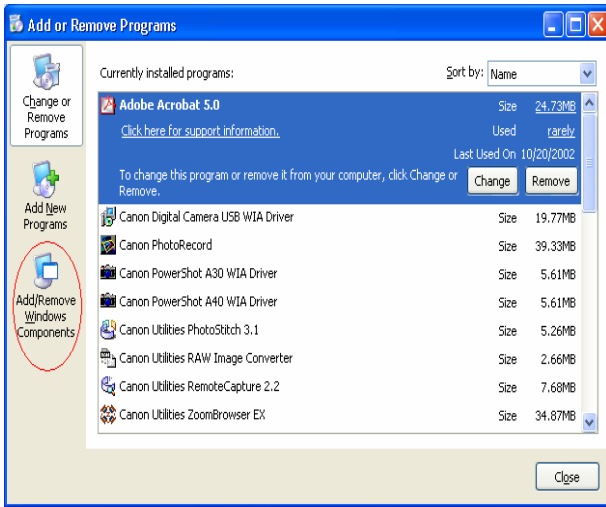
2.1 On desktop, choose “Start” → “Control Panel”



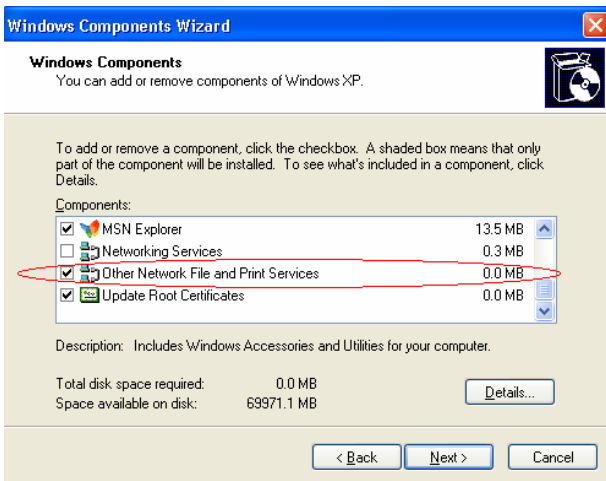
2.2 On the “Control Panel”, double click “Add/Remove Programs” icon.



2.3 On the “Add/Remove Programs” Interface, select the “Add/Remove Windows Components”.

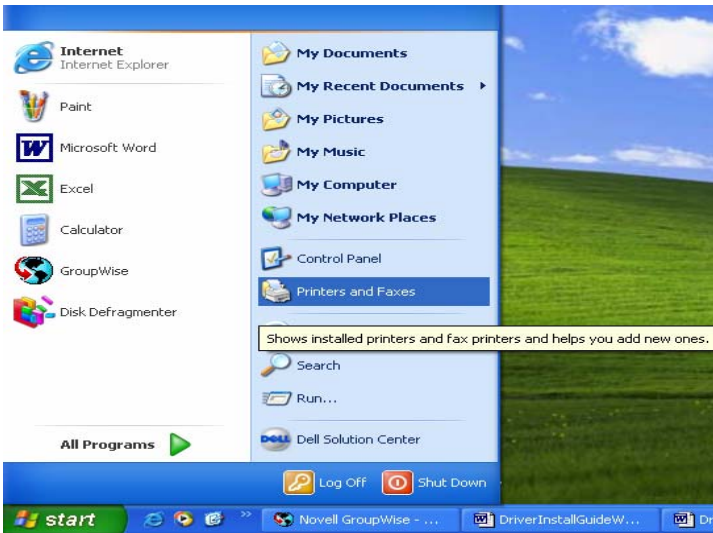


2.4 On the “Windows Components Wizard” Interface. Click the “Other Network File and Print Services” click box and press “Next” button to enable the LPR service.

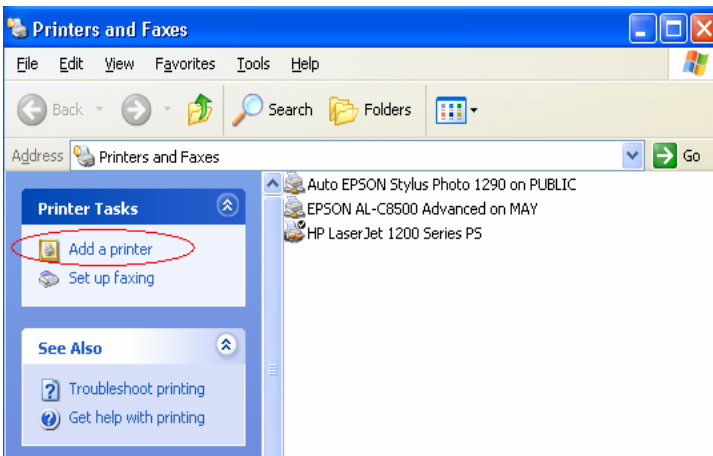


## Part III: Prepare to set-up the printer driver

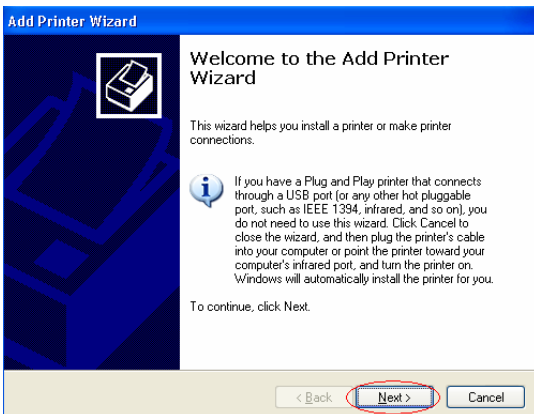
3.1 On desktop, choose “Start” → “Printers and Faxes”



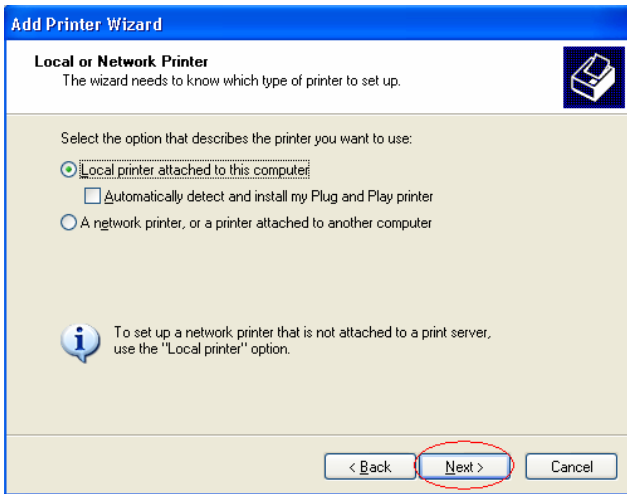
3.2 Click the “Add a printer” to start the Add Printer Wizard.



3.3 Click “Next” button to continue.

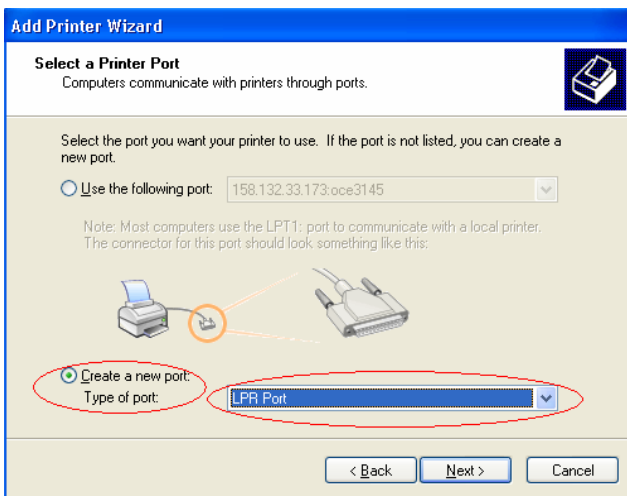


3.4 Select “Local printer attached to this computer” and unclick the “Automatically detect and install my Plug and Play printer”. Press “Next” button to continue.

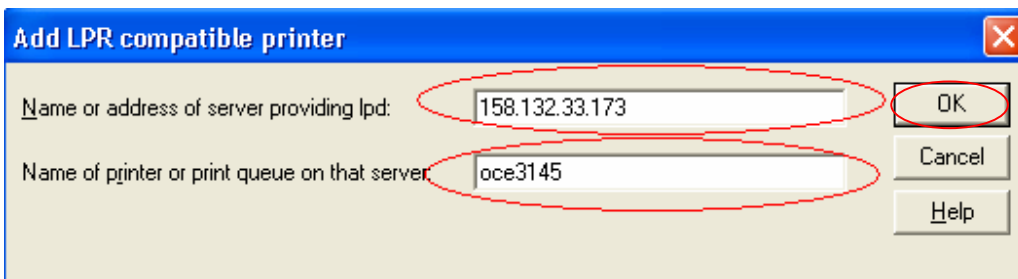


3.5.1 Choose “Create a new port”.

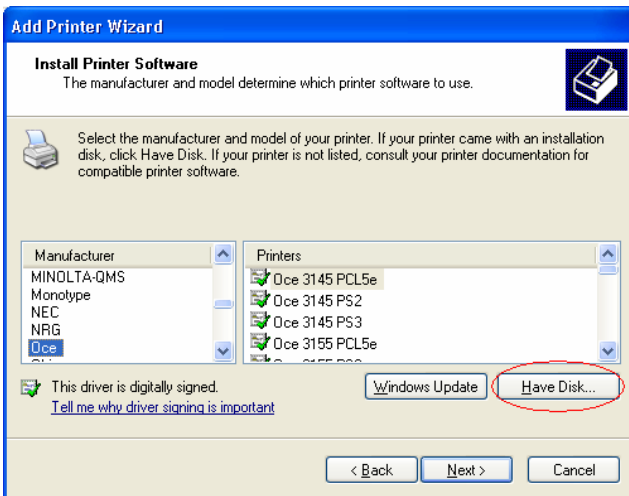
3.5.2 Select “LPR Port” on the pull down menu and press “Next” button to continue



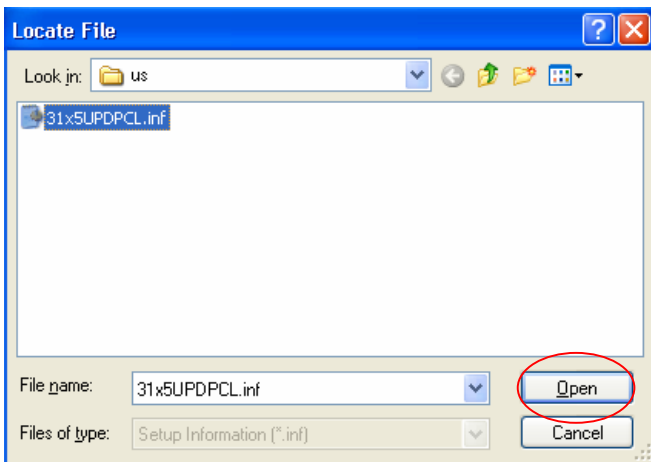
3.6 Input the (“158.132.33.173” for Computer Room) or (“158.132.33.179” for Study Room) on (Name or address of server providing lpd:) and “oce3145” on (Name of Printer or print queue on that server:). Then press “OK” button to continue.



3.7 Then click “**Have Disk...**” button on the **Add Printer Wizard** Interface.

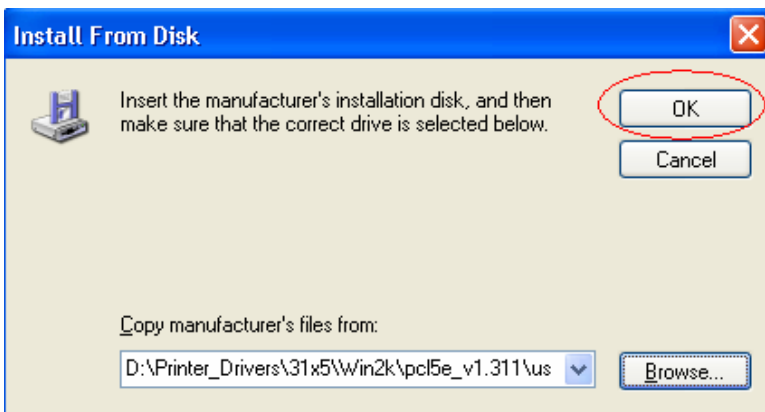


3.8 Locate the printer driver zip file that you have unzipped (i.e. c:\WinXPDriver), select the **31x5UPDPCL.inf** file and press “**Open**” button to continue.

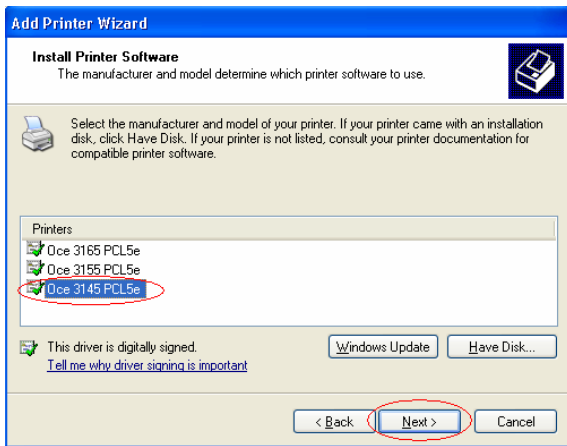


**Note:**  
You should know the location of the file (e.g. C:\Win2kDriver) you have unzipped. If you forgot it, please refer to Part I.

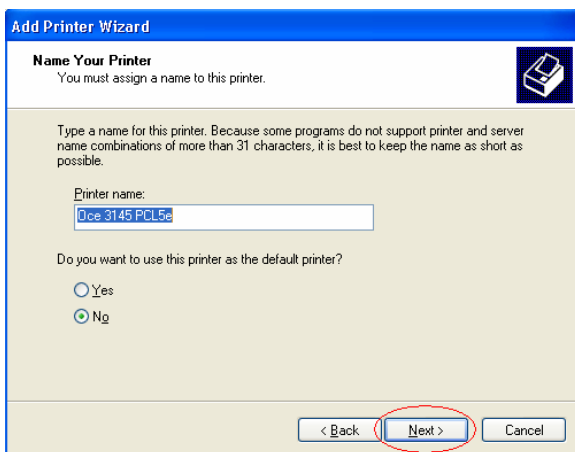
3.9 Press “**OK**” button to continue.



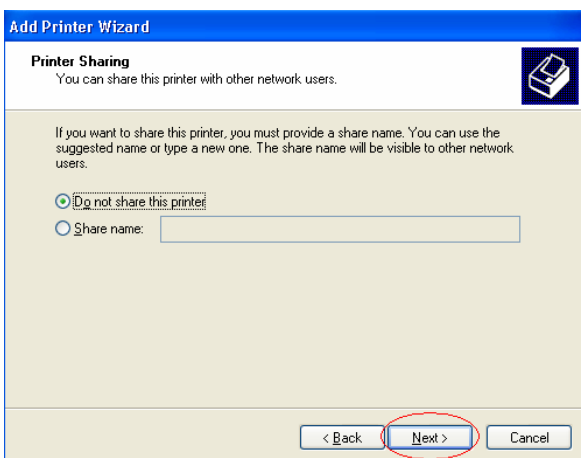
3.10 Select the “Oce 3145 PCL5e” for **Printers** table and press “Next” button to continue



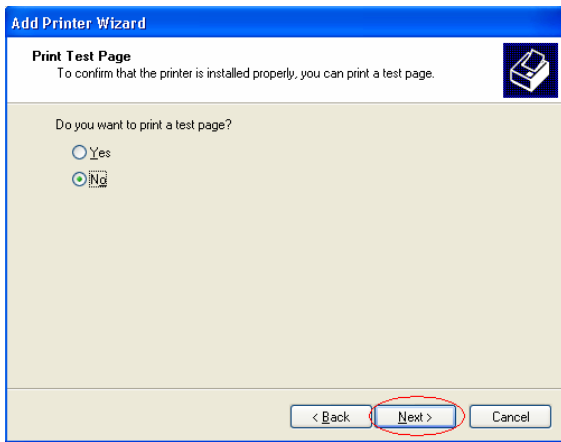
3.11 (Optional) You can change the Printer name and set this printer for your default printer or not. After you finish setting, press “Next” button to continue.



3.12 Choose “Do not share this printer” option and press “Next” button to continue.



3.13 **Don't** print any test page. Choose **"No"** option and press **"Next"** button to continue.



3.14 Press **"Finish"** button to complete the **Add Printer Wizard** and finish installation.

