

**OCE Network Copier Driver Installation Procedure for Windows Vista**

**Part I: Download OCE network copier driver for Windows Vista----- P.2**

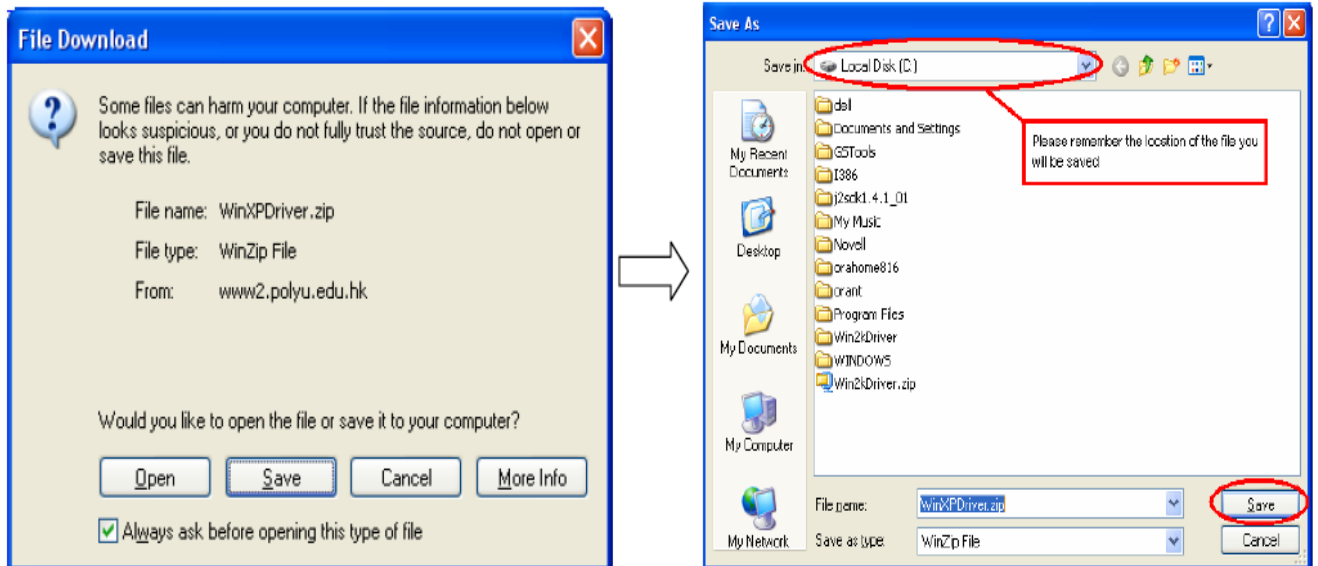
**Part II: Add the LPR service on Windows Vista----- P.3 – P.4**

**Part III: Prepare and set-up the printer driver ----- P.5 – P.8**

## **Part I: Download the OCE printer driver for Windows Vista**

Note: You must get the driver that is suitable for your Operating System (i.e. WinXPDriver.zip)

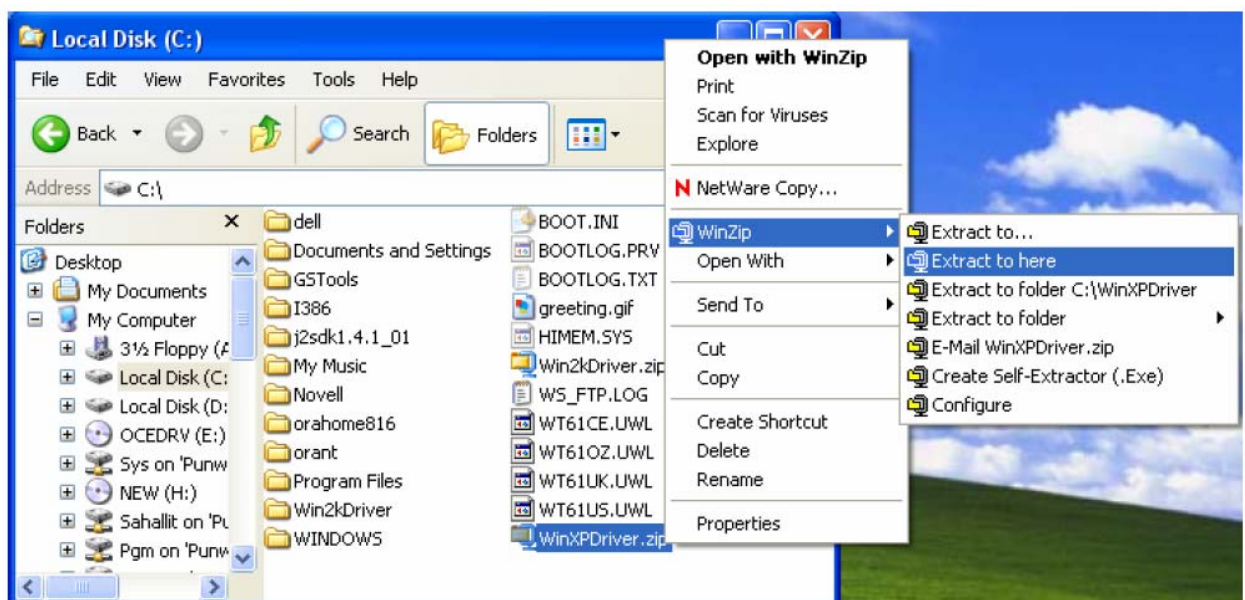
1.1 Please visit [http://www.polyu.edu.hk/hall/others/oc\\_e\\_guide.html](http://www.polyu.edu.hk/hall/others/oc_e_guide.html), and save WinXPDriver.zip to your local disk (e.g. C :\).



1.2.1 After download the **WinXPDriver.zip** file to C directory, you can use your unzip tool (e.g. WinZip tool) to extract it.

1.2.2 By using WinZip tool, right click the **WinXPDriver.zip** and choose “**Extract to here**”.

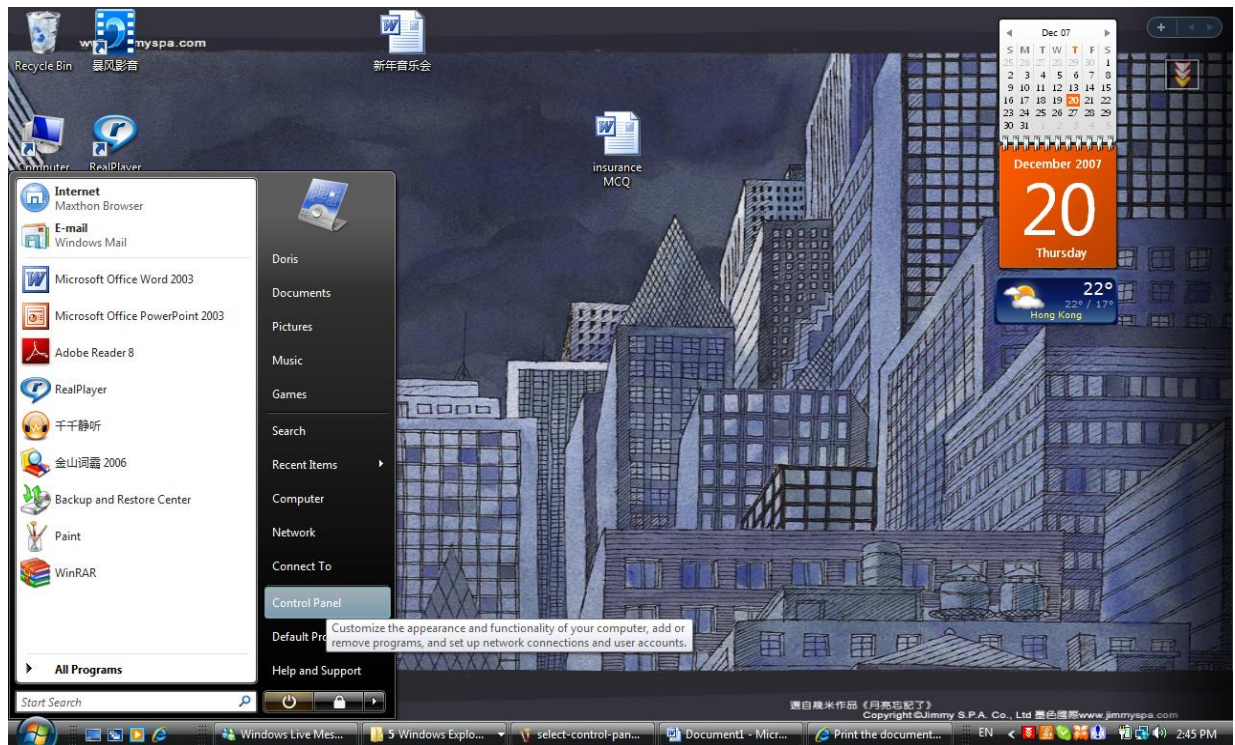
1.2.3 A new folder **WinXPDriver** had created on C directory (or to your current directory).



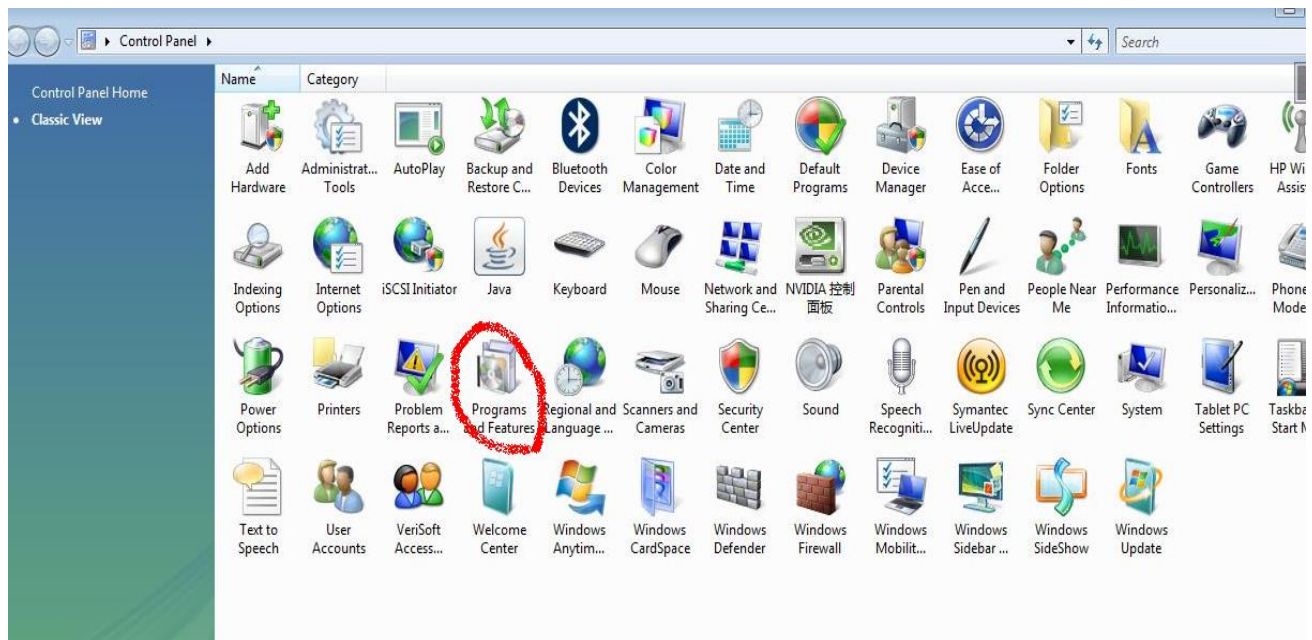
## Part II: Add the LPR service on Windows Vista

Before you add the LPR service, you need the Windows Vista.

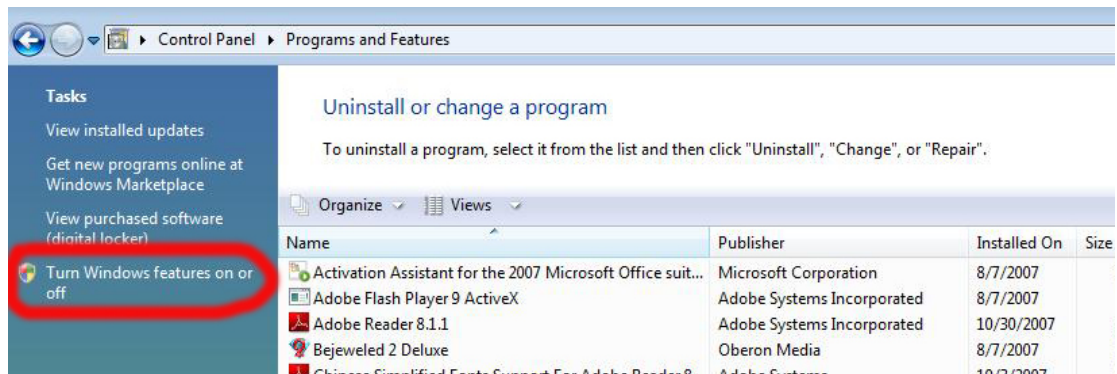
### 2.1 On desktop, choose “Start” >> “Control Panel”



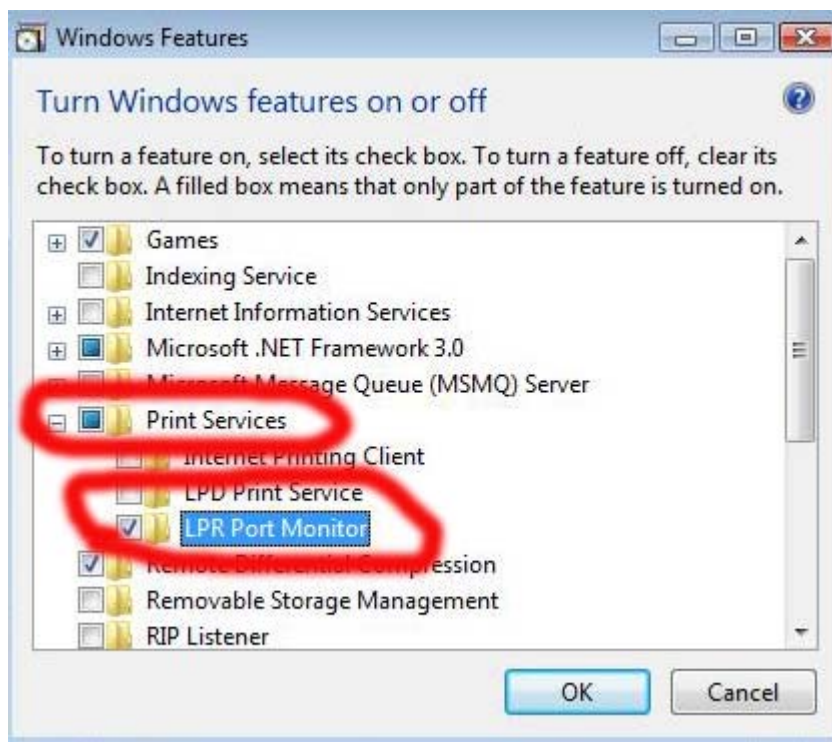
### 2.2 On the “Control Panel”, double click “Program and Features” icon.



2.3 On the “Program and Features” Interface, select the “Turn Windows features on or off”.

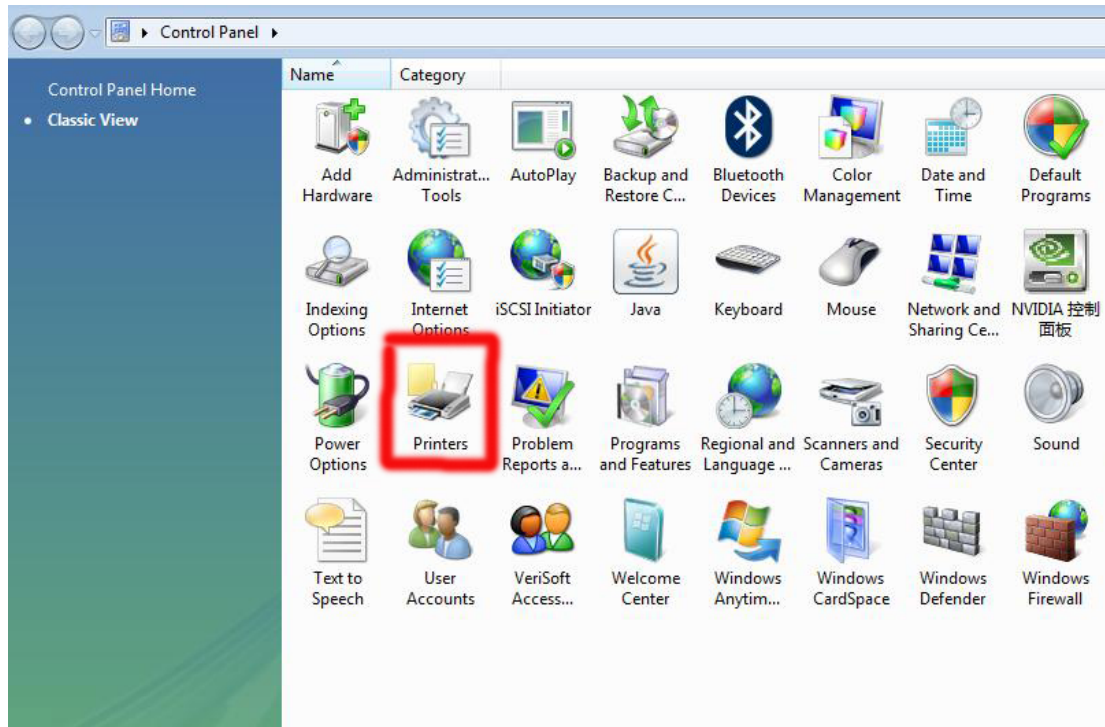


2.4 On the “Turn Windows features on or off” Interface. Click the “Print Services”. Then select “LPR Port Monitor” and press “Next” button to enable the LPR service.

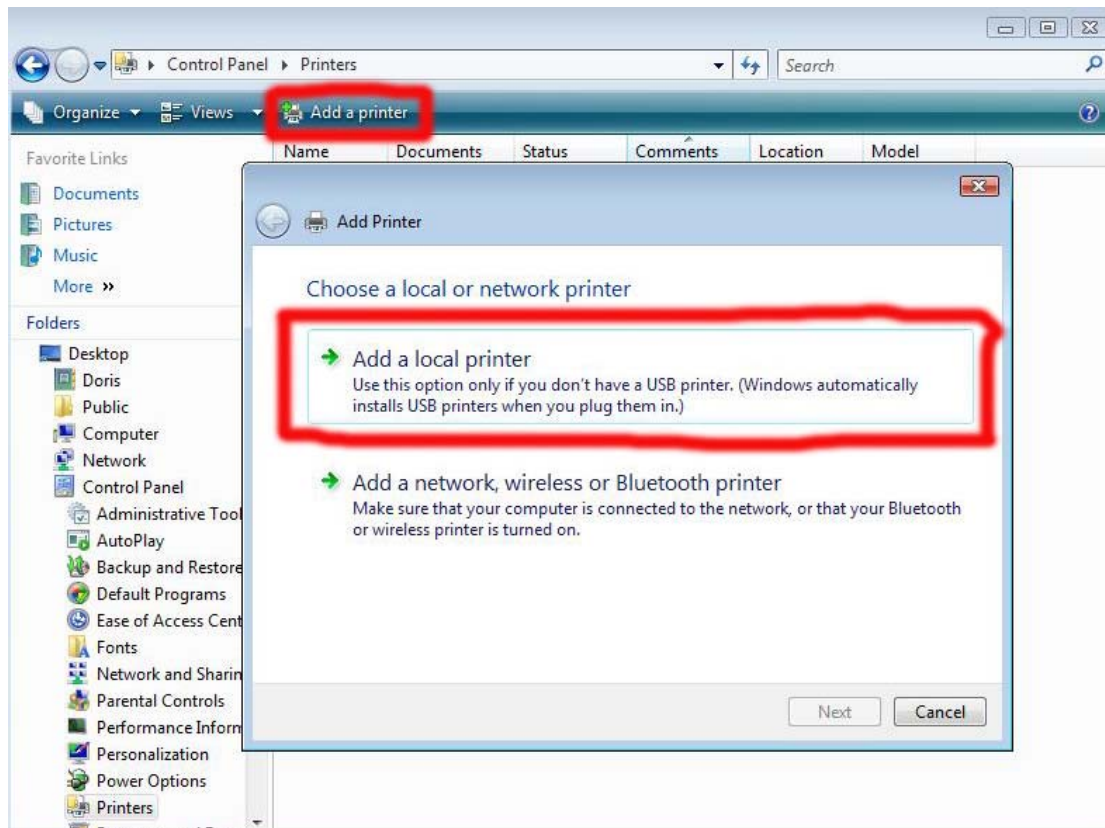


### Part III: Prepare to set-up the printer driver

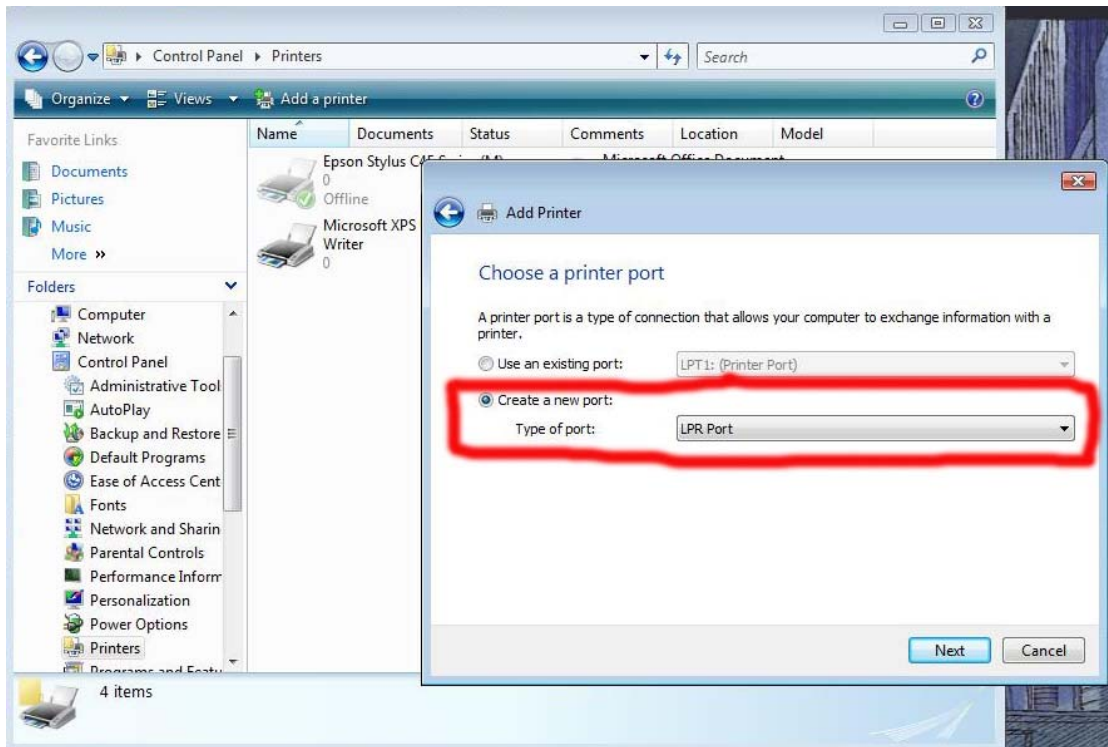
3.1 On desktop, choose “Start”>> “Control Panel”>>Printers



3.2 Click the “Add a printer” and select add a local printer. Then press next

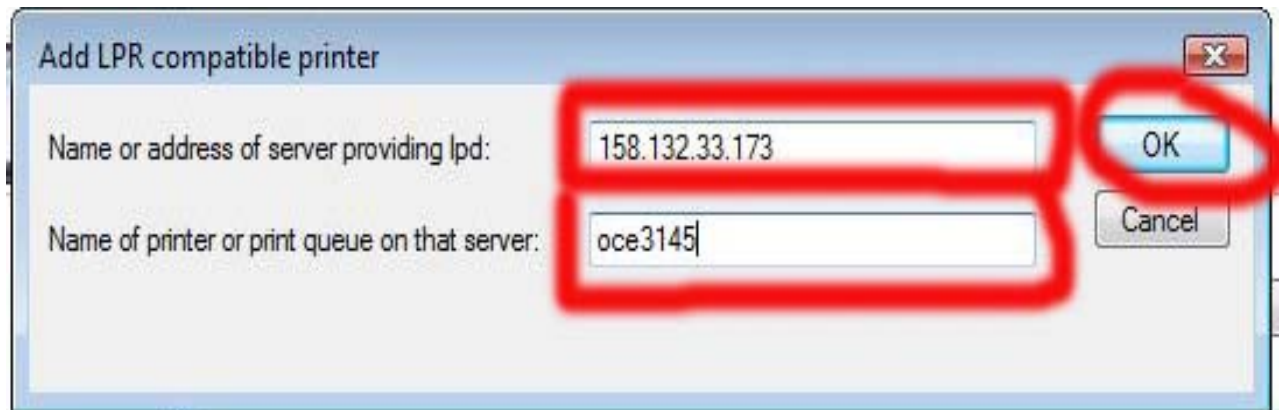


3.3 Select “Create a new port:” and select “LPR Port”.



3.4 Input the (“158.132.33.173” for Computer Room) or (“158.132.33.179” for Study Room) on (Name or address of server providing lpd:) and “oce3145” on (Name of Printer or print queue on that server:).

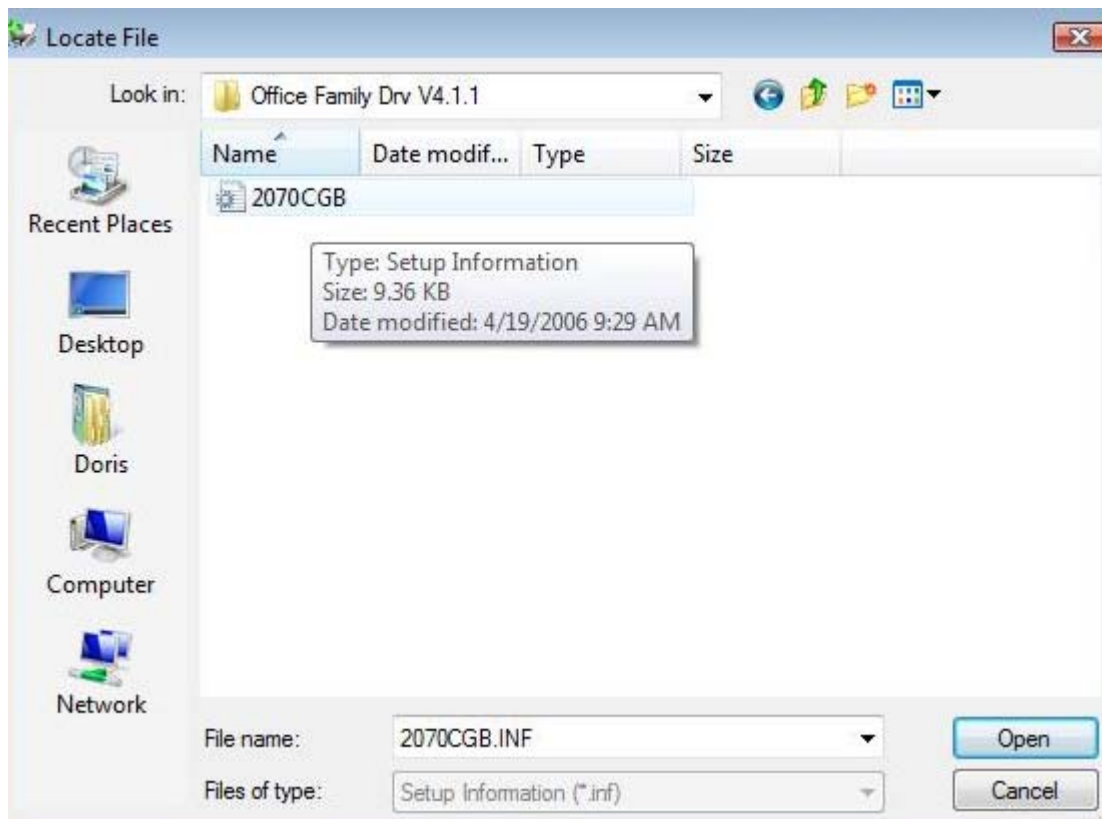
Then press “OK” button to continue.



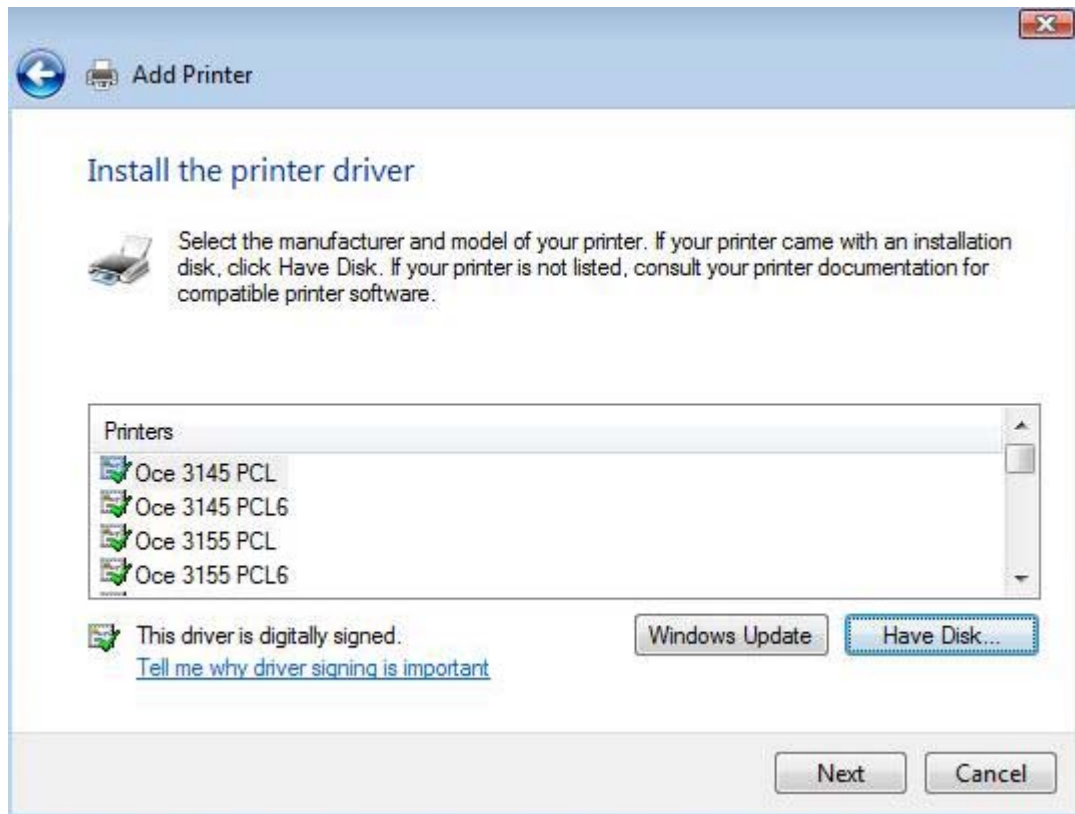
3.5 Then click **“Have Disk...”** button on the **Add Printer Wizard** Interface.



3.6 Locate the printer driver zip file that you have unzipped (i.e. c:\WinXPDriver), select the **2027CGB** file and press **“Open”** button to continue.



3.6 Select the “Oce 3145 PCL” for **Printers** table and press “**Next**” button to continue



3.7 Press “**Finish**” button to complete the **Add Printer Wizard** and finish installation.

