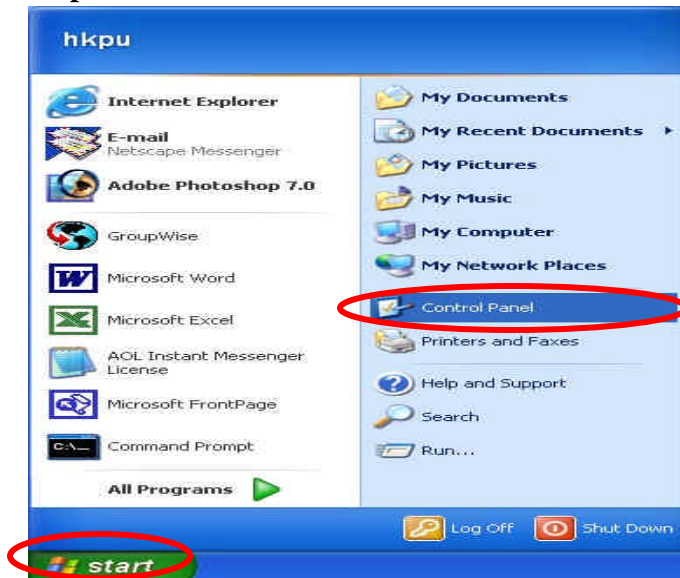


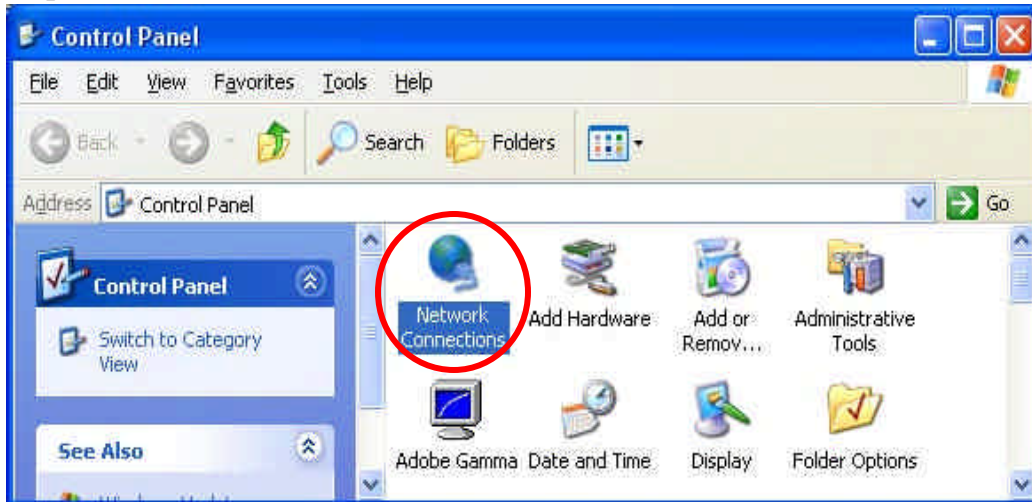
How to configure the IP Address for your computer in student room

Step1: Click 'Start' to extend start menu

Step2: Choose 'Control Panel' from start menu



Step3: Double Click the 'Network Connections' icon

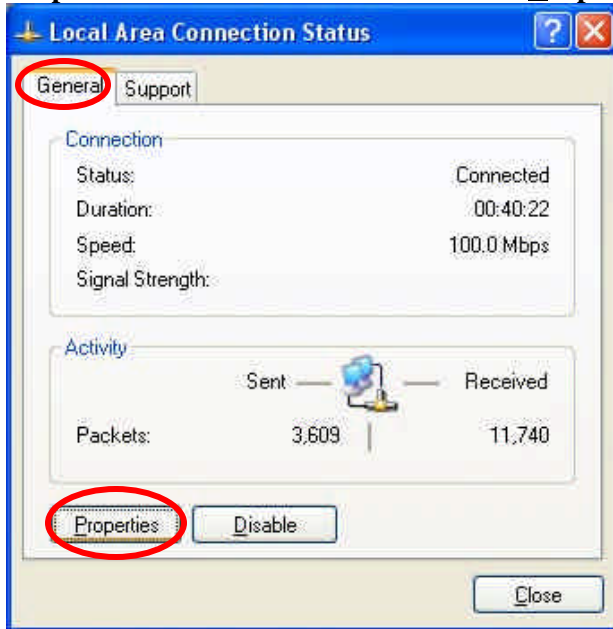


Step4: Double click the 'Local Area Connection' icon

LAN or High-Speed Internet

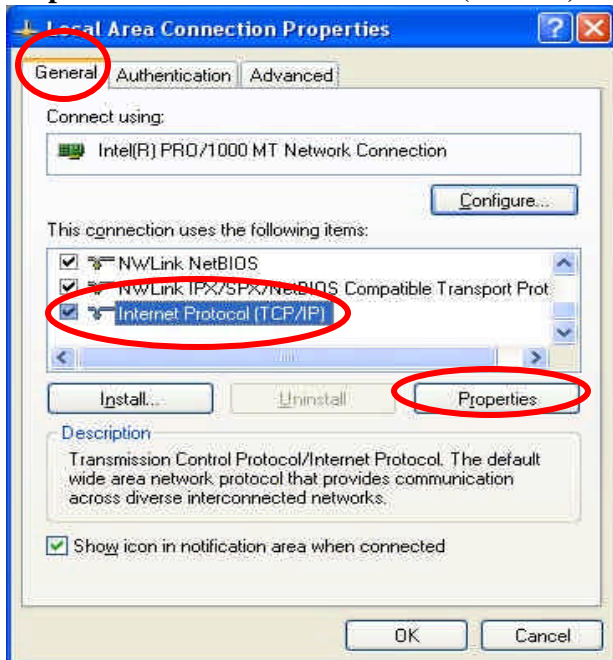


Step5: Select 'General' tab and Click the 'Properties' button



Step6: Select 'General' tab

Step7: Select the 'Internet Protocol (TCP/IP)' and Click the 'Properties' button

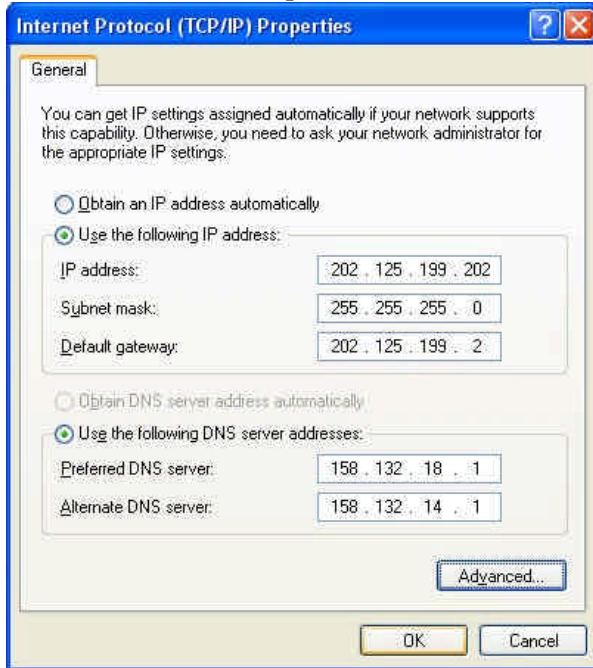


Step8: Choose ‘Use the following IP address:’ option box

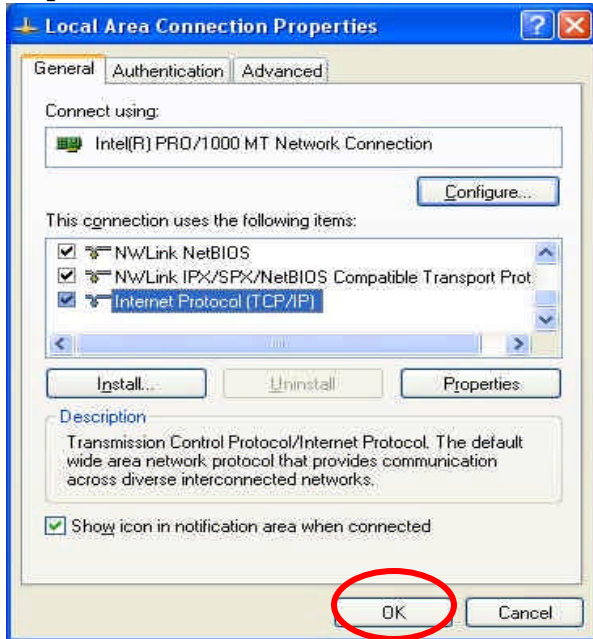
Step9: Follow the label which sticks on LAN socket to fill in the **IP address**, **subnet mask** and **Default gateway** column

Step10: Choose ‘Use the following DNS server addresses:’ option box

Step11: For ‘Preferred DNS server:’ please enter ‘158.132.18.1’. For ‘Alternate DNS server:’ please enter ‘158.132.14.1’. Then click ‘OK’ button



Step12: Click ‘OK’ button to close the ‘Local Area Connection Properties’



End