

The building's fluidity of form is generated through an intrinsic composition of its landscape, floor plates and louvers, that dissolves the classic typology of the tower and the podium into an iconic seamless piece.

Towering building for innovation and design

The Hong Kong Polytechnic University has appointed Ms Zaha Hadid, one of the most influential figures in the world of modern architecture, to design a new building dedicated to innovation and design, tentatively named "Innovation Tower".



Unveiling the design of the architectural work at the press conference, (from left) Mr Tzang, Ms Hadid and Mr Lo.

The UK-based architect recently flew to Hong Kong to preview her design of the building, which will be her first permanent architectural work in the city, at a press conference held in December. Hosting at the conference were Mr Victor Lo Chung-wing, Chairman of the University Council, and Mr Alexander Tzang, Deputy President.

Mr Lo said, "PolyU's new 'Innovation Tower' will serve as a driving force in the development of Hong Kong as a design hub in Asia."

The University sees design as a discipline that has important implications

for Hong Kong and the region, and further development in the field which is closely linked to technology and business, will be beneficial to the prosperity of society. To this end, PolyU President Prof. Poon Chung-kwong remarked that the new Tower will serve not only as a design centre for the University, but also a focal point to facilitate inter-disciplinary research and inter-departmental collaborations for design-related activities connected to industries, which are important to the city's continued development.

A new iconic building by world-class architect



Located at the northeastern side of the university campus, the 12,000-square-metre sculptural complex will be made up of two adjacent buildings linked by walkways and escalators.

Ms Hadid described the layered, angled design of the tower as bringing together concepts of “strata, landscape, layering”. The ideas of multiple perspectives, fluidity and the blurring of boundaries between spaces—which are common themes in the architect’s work—are well reflected in the design.

More than just a 12-storey building of classrooms, the tower, which is estimated to cost more than \$400 million, will house lecture theatres, studios, workshops, communal areas, a public gallery and a design museum.

The structure is expected to break ground by 2009, and to be completed by end 2011. The futuristic design is believed to make it not only a new landmark in Tsim Sha Tsui and Hung Hom areas, but also an architectural icon in Hong Kong.

A boost to design education and multidisciplinary collaborations

Being the sole provider of design education at tertiary level in Hong Kong, PolyU has been an important hub of design education and research over the years, and its School of Design (SD) is poised to play a key role in nurturing new generations of designers and driving the design industry in the region.

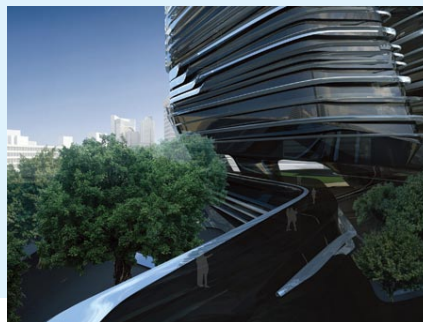
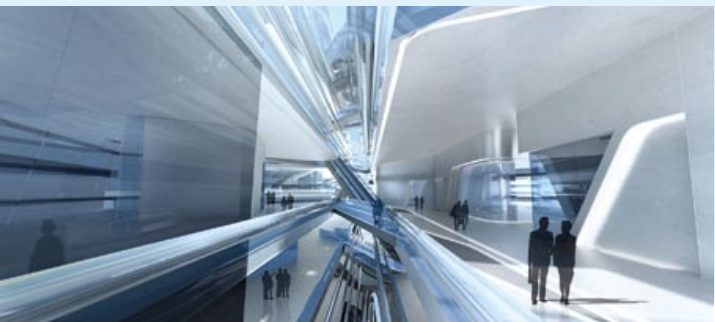
To prepare for the implementation of the four-year university curriculum in 2012, the Innovation Tower is thus one of the most important projects to cater for the expanding roles of the School, which is ranked as one of the world’s top 60 design schools in a *BusinessWeek* poll.

The new Tower will support the development of the School’s specialisms, including environmental design, industrial and product design, visual communication, advertising and digital design. It will further facilitate multidisciplinary design teaching and R&D activities as well as collaborations with industry.



Ms Hadid meets with Prof. Justice (third from right) during her visit to PolyU’s School of Design.

According to Prof. Lorraine Justice, Director of SD, who was named the world’s top 40 influential designers by the *ID* magazine in the US, the Innovation Tower will provide a place for inspirations and interactions. It will be a distinct experience for staff and students to exchange their ideas and thoughts in these spaces. ❖



“Innovation Tower”

About the architect Ms Zaha Hadid

- First female to receive the Pritzker Architecture Prize, which is known as the equivalent of the Nobel Prize in architectural circles.
- Named *Forbes* magazine's third most powerful woman in Britain, after the Queen and chief executive of the London Stock Exchange.
- Best known for her seminal built works around the world: Rosenthal Centre for Contemporary Art in Cincinnati, BMW Central Building in Leipzig, Phaeno Science Centre in Wolfsburg
- On-going projects include National Museum of 21st Century Arts in Rome; Aquatics Centre for 2012 Summer Olympics in London; Guangzhou Opera House; Dubai Business Bay-Signature Towers; and Chanel Travelling Exhibition Pavilion, which will visit Hong Kong in 2008.
- Her association with Hong Kong went back to 1982, when she won a competition to design a residential and sports facility on the Peak. The project was not built, but the award was one of the first public acknowledgements of her work.



Innovation Tower

Location: Northeastern tip of PolyU campus,
Hung Hom, Hong Kong SAR

Gross Floor Area: 21,600m²

Net Floor Area: 12,000m²

No. of storeys: 12

Capacity: 1,800 students and staff members

Construction cost estimate: HK\$400 million



理大委任世界級建築師設計「創新樓」

香港理工大學宣佈委任國際知名的殿堂級建築師 Zaha Hadid 女士為該校設計新教學大樓。大樓將用於支持有關設計教學及創新研究，暫名為「創新樓」。

Hadid 女士日前專程由倫敦建築師樓總部來港出席新聞發佈會，分享設計該教學大樓——她首個在香港的固定建築項目——的獨特意念。她的設計以打破傳統、賦予建築物變化多端的面貌及流動感見稱。

新聞發佈會由理大校董會主席羅仲榮議員及常務副校長曾慶忠先生主持。羅主席表示，「創新樓」將成為進一步推動香港發展為亞洲設計樞紐的重要動力。

Zaha Hadid 是當代建築界最有影響力的人物之一，也是首位榮獲被譽為建築界諾貝爾獎的 Pritzker



Architecture Prize 的女建築師，更被《福布斯》雜誌選為英國最具影響力女性第三名，排名僅次於英女皇及倫敦證券交易所行政總裁。由她設計的著名建築遍佈各大城市，正進行的建築項目包括羅馬的國家二十一世紀美術館、倫敦奧運游泳項目場館、廣州劇院及今年二月來港的香奈兒流動藝術展覽館等。

理大是香港專上設計教育的先驅，設有全港大學中唯一的設計學院，並獲美國《商業週刊》評為全球六十所最優秀的設計學院之一。隨著本港於二零一二年起實行大學四年制，學院將進一步擔當推動香港設計教育與發展的重要角色。

「創新樓」將配合理大發展多項設計專業，包括環境設計、工業與產品設計、視覺傳意、廣告與數碼設計等。理大校長潘宗光教授表示，新大樓可提供更多空間，發展與設計有關的跨學科教育與研究項目，更促進大學與業界的合作，鼓勵創意產業，為香港的經濟發展作出更多貢獻。

大樓由兩座以通道及電梯互通的建築物組成。其中一座樓高十二層，落成後可提供一萬二千平方米樓面面積，除了演講廳及課室等設施外，大樓內還包括設計廊及博物館，以展示各地及師生的設計作品。年前獲紐約《ID》雜誌選為全球最佳四十位設計師之一的理大設計學院院長 Lorraine Justice 教授認為，「創新樓」將成為激發創意及促進討論和交流的地方，為置身其中的師生帶來獨特的體驗。

「創新樓」座落理大校園東北角，將於二零零九年動工，並於二零一一年竣工。創新的設計相信將成為理大的地標，甚至成為尖沙嘴及紅磡區以至香港的地標。 ◆