

THE HONG KONG POLYTECHNIC UNIVERSITY
DEPARTMENT OF APPLIED SOCIAL SCIENCES

Alternative Learning Activities during Period of Work from Home (WFH)

Fieldwork is a mandatory programme component designed to align with the intended learning outcomes of the social work programme and to fulfill requirements of the Hong Kong Social Workers Registration Board. The COVID-19 pandemic has affected fieldwork arrangements. Working hand-in-hand with supervisors to support student learning, the Fieldwork Coordinating Team will flexibly embrace reasonable and innovative measures that can achieve the educational purposes of fieldwork and address the needs and problems of a society in transition.

When students follow any form of placement agency work from home (WFH) policy, we need to ensure students have suitable workload and sufficient learning opportunities. Students are encouraged to discuss with their respective fieldwork supervisors the value of these during WFH or supervision sessions.

1. Tasks/activities related to direct service provision

- Direct service delivery (e.g. online case interview, online group session)
- Reading tasks necessary for direct service planning, implementation and evaluation (e.g. literature review, statistics report reading)
- Written work necessary for direct service planning, implementation and evaluation (e.g. proposal writing, session plan design, evaluation report, revision of previous drafts)
- Preparation of materials for direct service implementation (e.g. materials development, worksheet design)

2. Electronic teaching and learning materials

- Communication videos for social work fieldwork

This set of casework skills videos focusing on two cases (i.e. adolescent depression and elderly chronically ill) have been included in Blackboard content. If students encounter difficulty in acquiring some of these important helping skills, they may revisit them and consult their supervisors.

[Where to find: APSS4693, 4694 Blackboard content \(For BASW students\); APSS5790 Blackboard content \(For MSW students\)](#)

- Written support for fieldwork

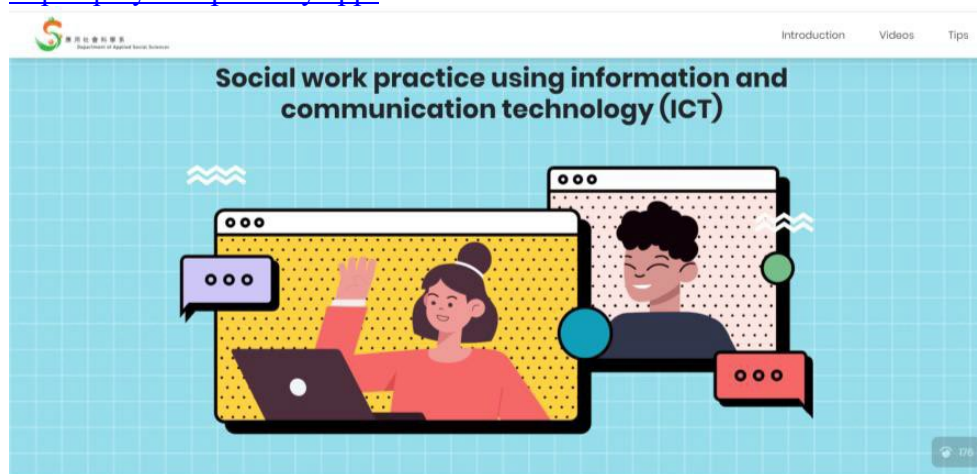
Three sets of self-learning packages, namely case intake summary, case summary recording and group summary recording have been developed with the collaboration of English Language Centre (ELC). These packages are for reference only, students are encouraged to discuss with their supervisors the use and adaptation. Students can find them in the Blackboard content.

Where to find: APSS4693, 4694 Blackboard content (For BASW students) APSS5783, 5784 Blackboard content (For MSW students)

- Social work practice using ICT

This platform is designed to provide students with references regarding technology-supported social work group skills. The webpage comprises: 1) role-play videos of technology-supported social work group activities led by social work students; 2) practical tips from fieldwork supervisors regarding the preparation, design and delivery of groupwork via technology; and 3) useful resources related to technology-supported social work practice.

<https://polyu-assp.netlify.app/>



3. Readings for review and supervision (For reference only)

Journal articles related to social work and COVID-19 in Hong Kong

Chan, C. & Tang, M. & Lee, M. (2021). Delivering social services during the COVID-19 pandemic: The case of older people centers in Hong Kong. *Journal of Social Service Research*. 48(1). doi:10.1080/01488376.2021.1956670.

Kwan, Chikin & Ling, Henry & Cheung, Johnson Chun-Sing & Chui, Ernest. (2020). Safeguarding health equality for the disadvantaged during the COVID-19 pandemic: Lessons learned for the social work profession. *Qualitative Social Work*. 20. doi:10.1177/1473325020973337.

Lau, Ava & Chan, Yu Cheung & Fung, Kwok Kin & Hung, Suet Lin & Feng, Juxiong. (2021). Hong Kong under COVID-19: Roles of community development service. *International Social Work*, 64 (1). doi:10.1177/002087282096773.

Lau, Bobo & Chan, Cecilia & Ng, Siu-Man. (2020). Resilience of Hong Kong people in the COVID-19 pandemic: lessons learned from a survey at the peak of the pandemic in Spring 2020. *Asia Pacific Journal of Social Work and Development*, 31 (1-10). doi:10.1080/02185385.2020.1778516.

Ling, Henry & Shum, Michelle & Kwan, Chikin & Mingdie, Xu. (2021).

Social workers' adaptation in times of pandemic crisis: A Hong Kong case. *International Social Work*. doi:10.1177/00208728211064581.

Wong, Paul & Lam, Yanyin & Lau, Janet & Fok, Hungkit. (2021). The resilience of social service providers and families of children with autism or development delays during the COVID-19 pandemic: A community case study in Hong Kong. *Frontiers in Psychiatry*, 11. doi:10.3389/fpsy.2020.561657.

- Other relevant articles

Banks, S, Cai, T, de Jonge, E., et al. (2020a). *Ethical challenges for social workers during Covid-19: A global perspective*. Report, International Federation of Social Workers, Rheinfelden, 29 June. Available at: <https://www.ifsw.org/wp-content/uploads/2020/07/2020-06-30-Ethical-Challenges-Covid19-FINAL.pdf>

Banks, Sarah & Cai, Tian & de Jonge, Ed & Shears, Jane & Shum, Michelle & Sobočan, Ana M. & Strom, Kim & Truell, Rory & Pemán, María & Weinberg, Merlinda. (2020). Practising ethically during COVID-19: Social work challenges and responses. *International Social Work*, 63. doi:10.1177/0020872820949614.

Mishna, F, Milne, E, Bogo, M, et al. (2021). Responding to COVID-19: New trends in social workers' use of information and communication technology. *Clinical Social Work Journal*, 49, 484–494.