



THE HONG KONG
POLYTECHNIC UNIVERSITY
香港理工大學



DEPARTMENT OF
APPLIED PHYSICS

PHD STUDIES IN APPLIED PHYSICS

under support of

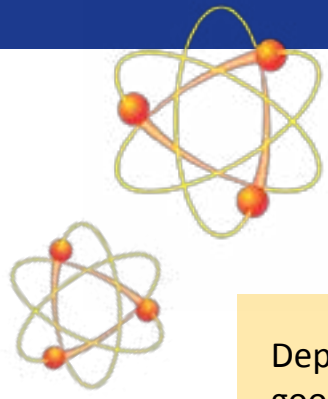
HONG KONG

PhD Fellowship Scheme 2017/18

Department of Applied Physics invites applications for the “Hong Kong PhD Fellowship Scheme” which is under support of The Research Grants Council (RGC) of HKSAR. Students from worldwide will be recruited to pursue their PhD studies in The Hong Kong Polytechnic University. The Scheme will support students selected through open competition.

The Fellowship will offer a monthly stipend of **HK\$20,000** (i.e. approximately **US\$2,600**) and Conference and Research-related travel allowance of **HK\$10,000** (i.e. approximately **US\$1,300**) per year for a maximum of three years awarded by the RGC, PolyU will provide each awardee with a 4-year tuition fee scholarship and guarantee hall accommodation in the first year of study.

Deadline: 1 December 2016



About Department of Applied Physics

Department of Applied Physics (AP) was founded in 1987. We inherit the good traditions of having strong links with local industries and catering application-oriented curricula. Furthermore, we actively engage in research and consultancies leading to recognitions from both academic and industrial societies.

Research in AP can be categorized into the following four areas:

- (1) Nanomaterials
- (2) Photonics, Plasmonics and Optoelectronics - Materials and Devices
- (3) Smart Materials and Devices
- (4) Theoretical and Computational Physics

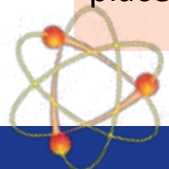
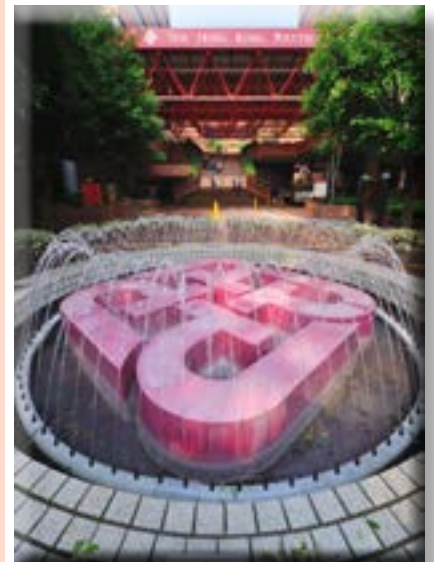


Owing to our long term commitment to striving for academic excellence, AP has achieved very outstanding results, including publications in internationally renowned journals, awards by local and international institutes, patents, as well as grants from various governmental and industrial bodies.

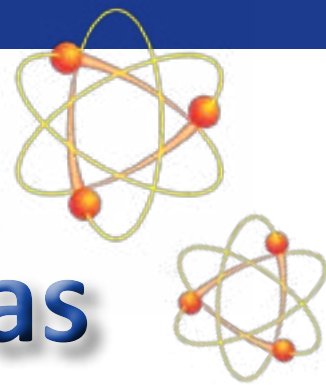
About PolyU

PolyU is a government-funded university in the Hong Kong Special Administrative Region of the People's Republic of China. We have the largest number of students among the eight government-funded institutions in Hong Kong, and have a long and proud history of providing internationally competitive professionally oriented education. We conduct world-class research in a large number of areas and our research emphasizes high application value.

With a strategic emphasis on research and innovation, the University firmly believes that research is an integral part of academic life. It informs teaching and advances the frontiers of knowledge and technology, thus enhancing the competitiveness of business and industry and facilitating Hong Kong's move towards being a knowledge-based economy. At PolyU, we are delighted that our ideas have made the world we live in a better place.



Research Areas



**PHOTONICS, PLASMONICS
and OPTOELECTRONICS -
MATERIALS and DEVICES**
光子, 表面等離激元光子學與光電-
材料與器件

Enquiry

Prof. S.F. Yu (tel: 2766 5647;
email: apsfyu@polyu.edu.hk)

Website:

http://www.polyu.edu.hk/ap/research_Photonic_Materials_and_Devices.html

NANOMATERIALS
納米材料

Enquiry

Prof. S.P. Lau (Tel: 2766- 5679;
email: apsplau@polyu.edu.hk)

Website:

http://www.polyu.edu.hk/ap/research_Nanomaterials.html

**SMART MATERIALS
and DEVICES**
智能材料與器件

Enquiry

Prof J.Y. Dai (tel: 2766 5682;
email: jiyandai@polyu.edu.hk)

Website:

http://www.polyu.edu.hk/ap/research_Smart_Materials_and_Devices.html

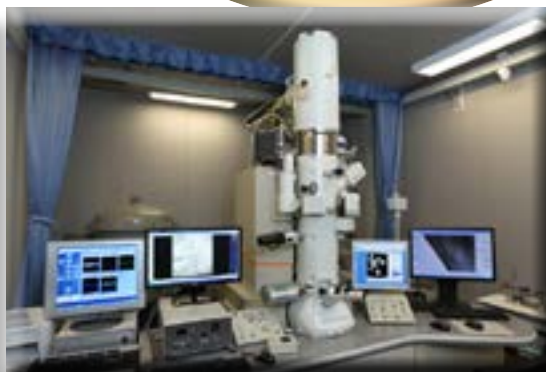
**THEORETICAL and
COMPUTATIONAL PHYSICS**
理論與計算物理

Enquiry

Dr C.H. Lam (tel: 2766 5681;
email: apachlam@polyu.edu.hk)

Website:

http://www.polyu.edu.hk/ap/research_Theoretical_and_Computational_Physics.html



Eligibility

Candidates who are seeking admission as new full time PhD students in Applied Physics/ Material Science, irrespective of their country of origin, prior work experience, and ethnic background, should be eligible to apply.

Applicants should demonstrate outstanding qualities of academic performance in Science/ Engineering , research ability / potential, communication and interpersonal skills, and leadership abilities and societal responsibility.

Application Period

Please take note of the following key dates:

1 Sep 2016 | Call for applications

1 Dec 2016 | Deadline for submitting initial applications to the Research Grants Council (RGC) by the applicants for allocation of reference numbers
[Online Application - <https://cerg1.ugc.edu.hk/hkpfs/InitApplication.jsp>]

1 Dec 2016 | Deadline for submission of full applications to PolyU
[Online Application - <https://www40.polyu.edu.hk/rowas/jsp/home.jsf>]

Mar/ Apr 2017 | Notification of results

Each application received by PolyU will be processed as a normal application for PhD admission.

For details, please visit

2017/18 PhD Fellowship Scheme @ PolyU

<http://www.polyu.edu.hk/ro/hkphd-fellowship/en/index.html>

Welcome to Join Us !

Enquiry

Department of Applied Physics

Tel: (852) 2766 5674

Fax: (852) 2333 7629

Email: apdept@polyu.edu.hk

Web: <http://www.polyu.edu.hk/ap/>

Research Office

Tel: (852) 3400 3635

Fax: (852) 2355 7651

Email: roro@polyu.edu.hk

Web: <http://www.polyu.edu.hk/ro/>